

# WHAT DO WE DO???????

**Duane Poiroux**

Chief, Coastal Project Office

Operations Division

Mobile District

9 November 2017

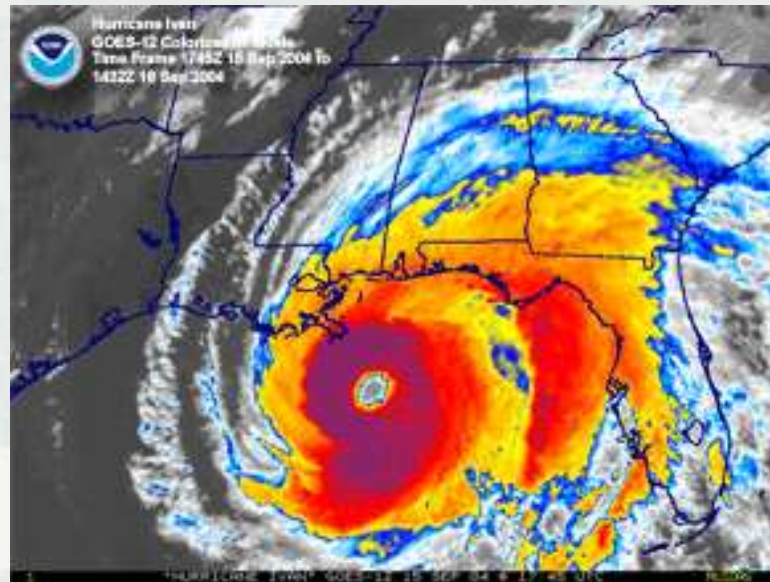


®

US Army Corps of Engineers  
**BUILDING STRONG**®

# HURRICANE PLANNING, PREPAREDNESS, RESPONSE, AND RECOVERY

- Partnerships- Industry, Waterway Users, Federal, State, and Local Partners
- Communications
- Cooperation
- Known expectations
- Agreed upon priorities
- Exercises/drills
- Lessons Learned



# COMMUNICATION AND COOPERATION

- **Follow Gulf Coast Inland Waterways Joint Hurricane Response Protocol.**
- **Communications begin whenever a storm enters the Gulf or 72 hours prior to landfall.**
- **Corps hosts daily conference calls with stakeholders and updates are provided from the Weather Service (NOAA) and the Coast Guard.**
- **Determine available resources for surveying: Corps, Federal Partners, Contractors, and Users.**
- **Conduct pre-storm meetings to determine safe harbor for dredges and survey vessels.**



# ACTIONS DURING THE STORM

- **Begin estimating impact on Federal channels based on the category projected path of the storm.**
- **Plan survey strategy for first teleconference with Partners.**
- **Determine projects that will not be impacted by the storm and recommend to CG they be open to business as usual.**
- **Set priorities and expectations for recovery efforts.**



# ACTIONS AFTER LANDFALL

- **The first morning after the storm at 0800 have first teleconference with Coastal Partners to discuss condition of our AOR and priority of re-openings.**
- **Continue teleconferences twice a day at 0930 and 1400 until recommendation to one per day.**
- **Within 12 hours determine the projects that have not been effected by the storm and recommend to CG they be open to business as usual.**
- **Use a spread sheet to provide survey status and opening recommendation to the Coastal Partners.**



# RECOVERY STATUS SPREADSHEET

USCG SECTOR MOBILE & COE x/xx/201x 0930CST											
NAVIGATION PROJECT STATUS - Hurricane XXXX											
CWIS	Navigation Project	State	Authorized Dimensions	Present Depth	Channel Miles	Survey Date	Est.Start Date	Est. Date Restored	USACE Recommend	ATON/COTP Status	Remarks/Dredging/Jetties
007130	GRWW	AL	---								
	Mile 40 to 125 (MS/LA to M)	MS	12 X 150		80.0				open	open	
	Mile 125 to 155	AL	12 X 125/150		95.0				open	open	
	Mile 155 to 250	AL/FL	12 X 125		95.0				open	open	
	Mile 250 to St Marks	FL	12 X 125		220.0				open	open	
007150	GULFPORT HARBOR	MS	---								
	Anchorage Basin	MS	32/36X1100		1.0				open	open	
	Sound Channel	MS	36 X 220		11.0				open	open	
	Bar Channel	MS	28 X 300		10.0				open	open	
009280	LA GRANGE BAYOU	FL	12 X 100		7.0				open	open	
011670	MOBILE HARBOR	AL	---								
	Chickasaw Creek	AL	26 X 250		3.0				open	open	
	Arlington Channel	AL	27 X 150		2.0				open	open	
	Carricks Bend	AL	27 X 150		1.5				open	open	
	Theodore Channel	AL	40 X 400		7.5				open	open	
	Theodore Barge Canal	AL	12 X 100		1.5				open	open	
	Mobile River	AL	40 X 500-1000		5.0				open	open	
	Mobile Bay	AL	45 X 400		29.0				open	open	
	Mobile Bar	AL	47 X 600		8.0				open	open	
008308	PANACEA HARBOR	FL	8 X 100		4.0				open	open	
013640	PANAMA CITY HARBOR	FL	---								
	Bay Channel	FL	36 X 300		10.0				open	open	
	Gulf Channel	FL	38 X 450		1.5				open	open	
	Grand Lagoon	FL	8 X 100		1.0				open	open	
	Watson Bayou	FL	10 X 100		1.0				open	open	



# CORPS DREDGING OPERATIONS

- **As soon as channels are opened, existing dredge assignments will be re-ordered based on storm impacted areas and channel priority.**
- **Funding post storm can be problematic. Fiscal year ends at the end of September and regular funding is scarce.**
- **Most of the channel restoration is with supplemental funding, however this year????**



# LESSONS LEARNED

- **Lessons learned conference held between Federal partners after recovery mission completed.**
- **Host Industry Day in May to communicate lessons learned to stakeholders and receive their feedback. Begin planning for the upcoming storm season.**
- **Joint Hurricane Protocol updated every June. Available at <http://www.gicaonline.com>.**

