

Mobile Bay Disposal Plan

October 2012

WEDA 2012
Miami, Florida



®

US Army Corps of Engineers
BUILDING STRONG®



Pre - 1990

- Cutterhead dredging
- Adjacent to channel disposal
- Few restrictions on disposal
- Dredge cost \$.50/cy
- Environmental Opposition
- Authorization for new channel changed disposal methods

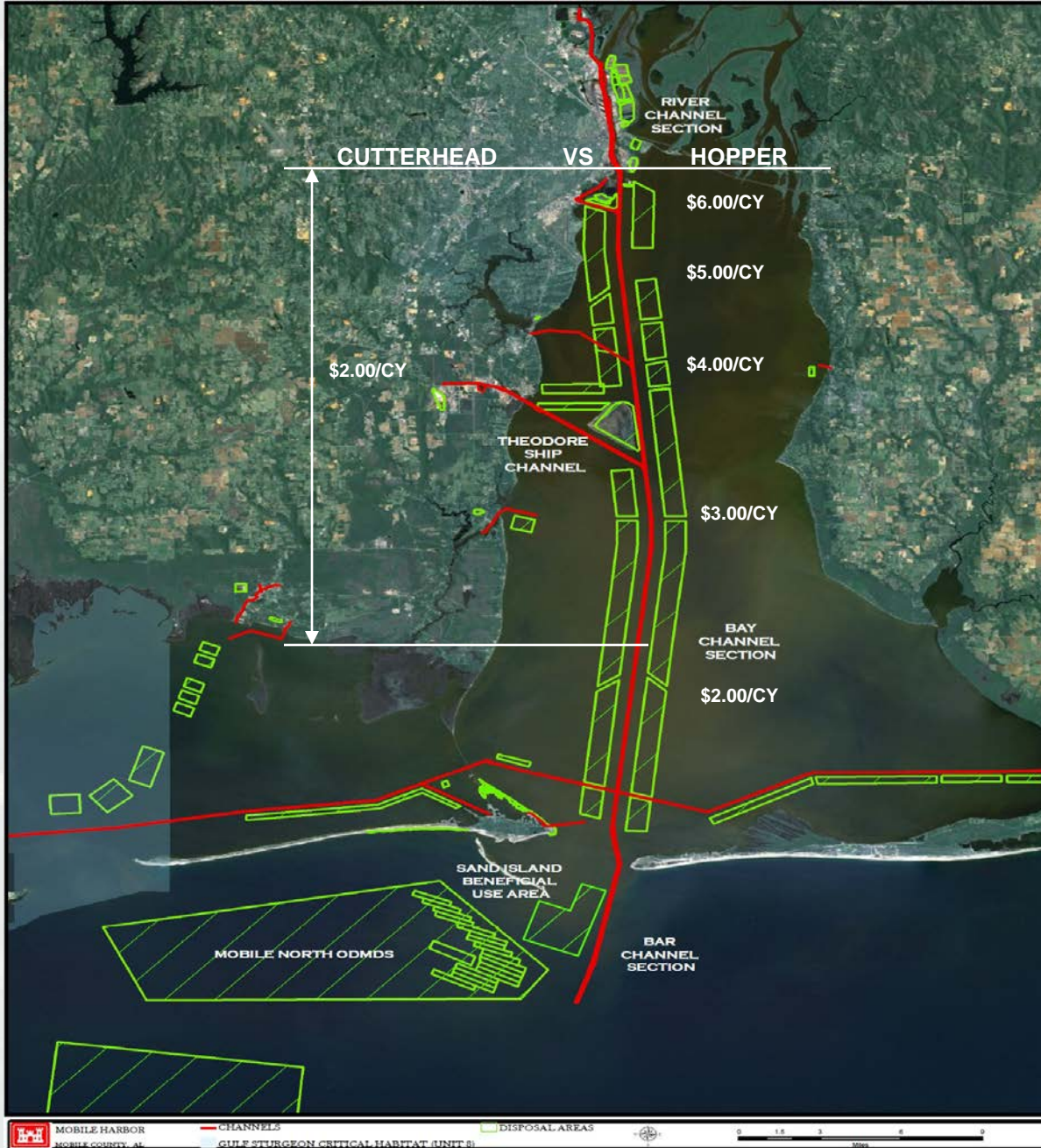


Mobile Bay Channel Disposal

- WRDA 1986
 - ▶ Authorization for widening and deepening
 - ▶ “except that, for reasons of environmental quality, dredged material from such project shall be disposed of in open water in the Gulf of Mexico.”

- WRDA 1996
 - ▶ May consider alternatives to disposal of dredged material in the Gulf of Mexico, including environmental acceptable alternatives for beneficial uses of dredged material and environmental restoration





MOBILE HARBOR
MOBILE COUNTY, AL

CHANNELS

CHIEF SURGEON CRITICAL HABITAT (UNIT 8)

DISPOSAL AREAS



BUILDING STRONG®

In-Bay Disposal Considerations

- Removing 4 Mcy annually from the Bay sediment budget was NOT the smart thing to do.
- Open water disposal has been recently conducted
 - ▶ 1998 – Hurricane Georges
 - ▶ 2004/5 – Hurricanes Ivan and Katrina
- Mobile Bay is a well studied system with numerous investigations regarding the affects of thin layer disposal showing minimal impacts
- Sediment budget shows that Gulf disposal is removing virtually all the sediment that enters the system
- System should be a pro-grading delta – but is neutral



Short Term Plan

- Fill Brookley Hole
- Emergency Dredging of Bay with thin layer disposal
- Modeling of sediment movement from disposal areas
- Commitment to move forward with development of a beneficial use site



Long Term Plan

- Develop large sponsor owned site
- Permanent pipeline dredging with thin layer disposal
- Possible hopper dredge of lower bay
- Pursue other beneficial use opportunities



BU sites as refined and prioritized from the April 12 Meeting



Status

- Near completion of short term phase including Brookley hole and thin layer channel restoration
- Modeling thin layer sediment movement
- Bug group evaluated location options for bene use site



Bug - Path forward

- Finalize bene use site location and feasibility level design
- Permit site (State is permit applicant)
- Finalize design and construct with Restore Act funds
- Revise Mobile Harbor Water Quality Certificate to include use of the new site and thin layer open water disposal

