

# A NEW TOOL TO ASSESS DREDGING IMPACTS TO EELGRASS IN SAN FRANCISCO BAY



Julia Kelly, PhD  
Environmental Scientist

WEDA  
Pacific Chapter  
October 27, 2022

# A NEW TOOL TO ASSESS DREDGING IMPACTS TO EELGRASS IN SAN FRANCISCO BAY



Viktoria Kuehn  
Coastal Planner

WEDA  
Pacific Chapter  
October 27, 2022

# OUTLINE

Programmatic EFH Consultation for Dredging.

Tool Description.

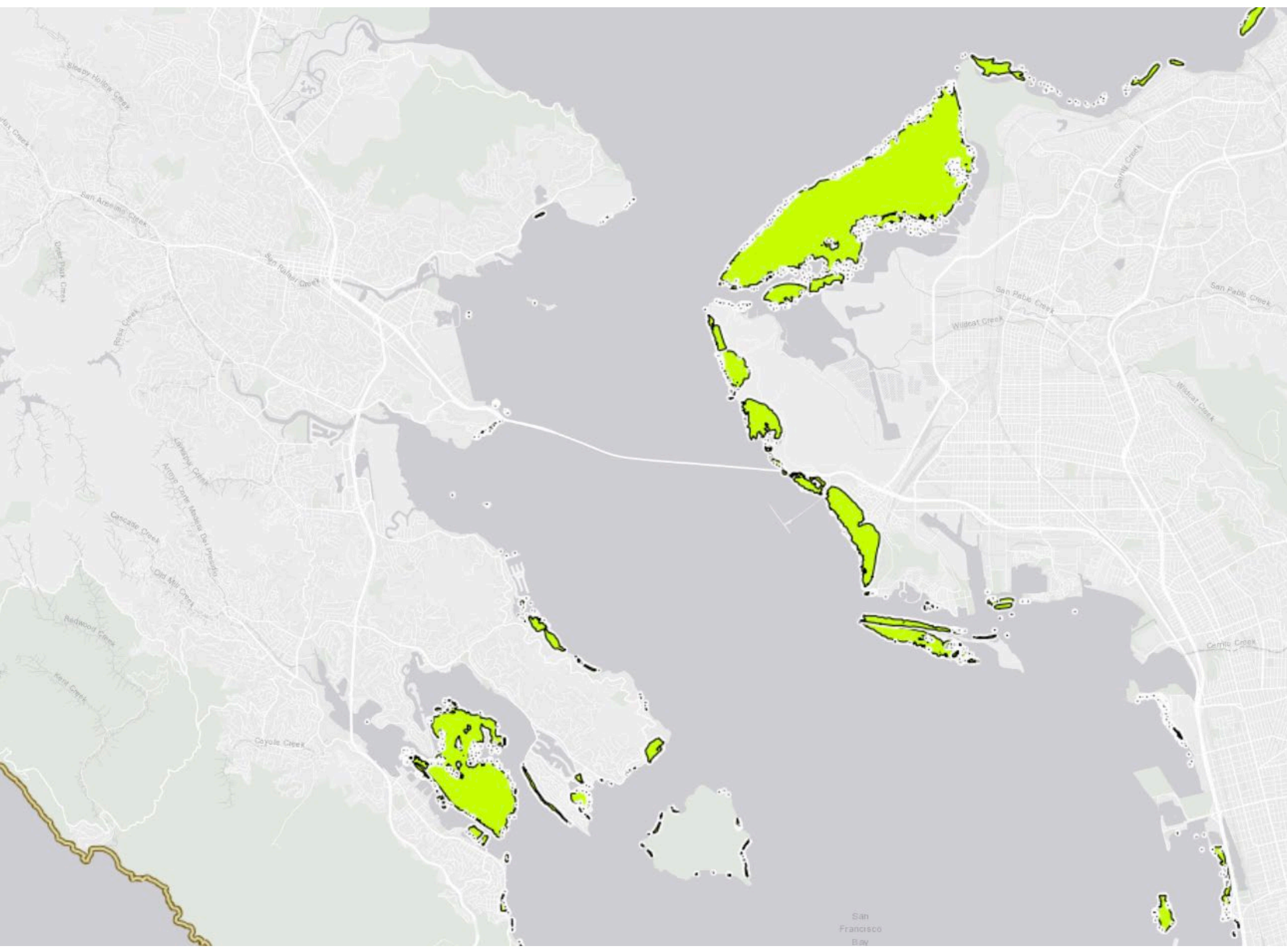
Demo!

# Programmatic Essential Fish Habitat Consultation

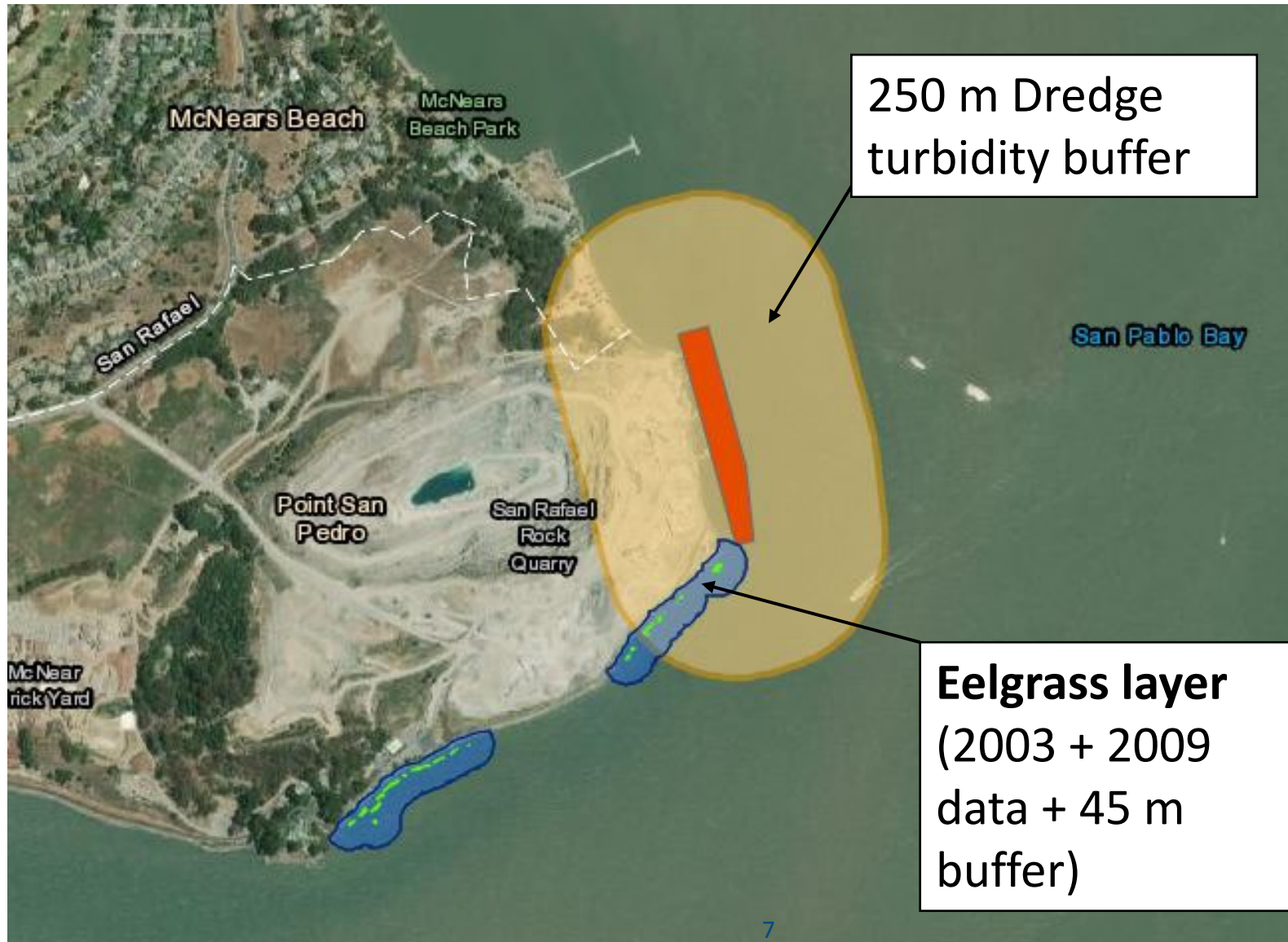


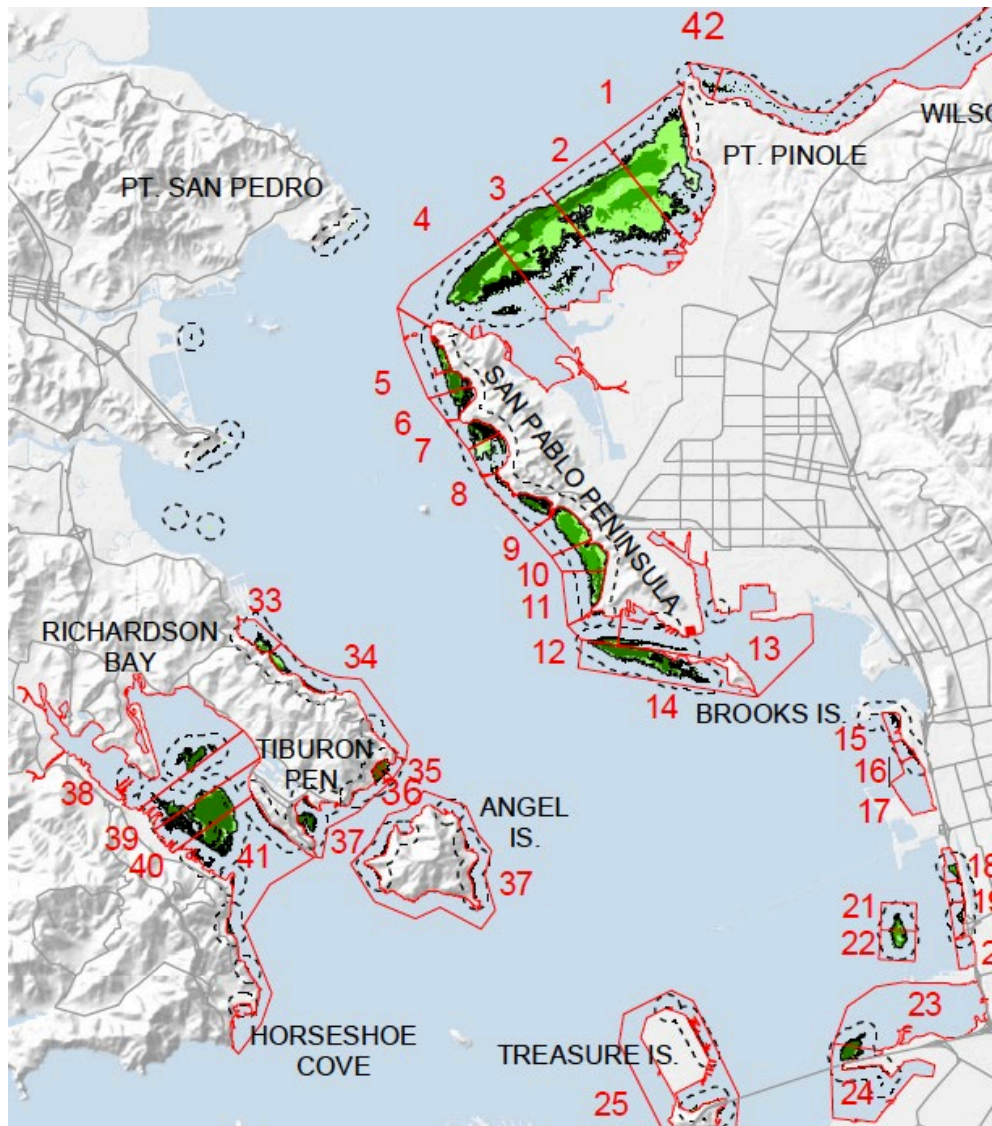


# Consultation for Dredging Eelgrass Layer



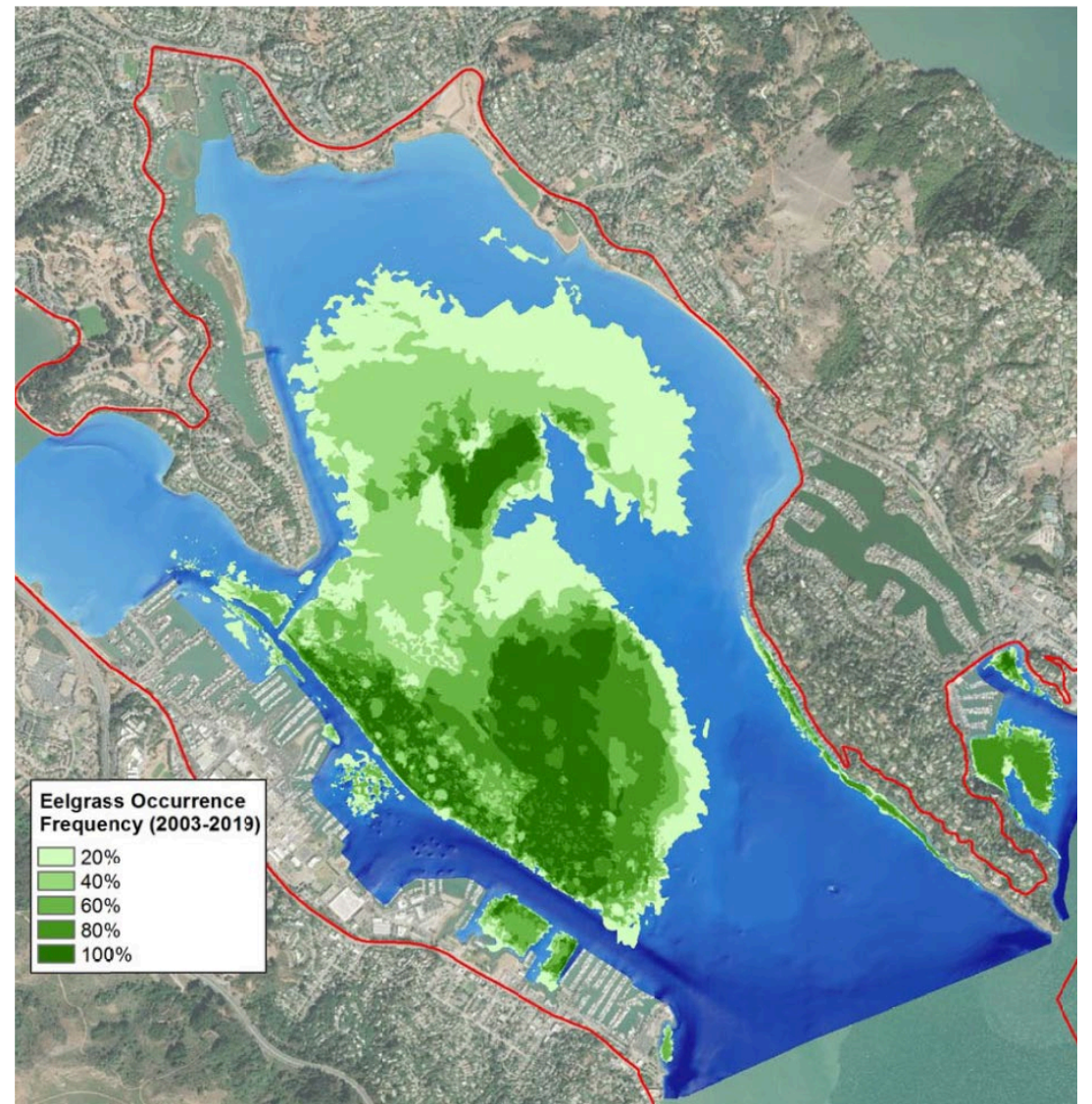
# Consultation for Dredging Layers





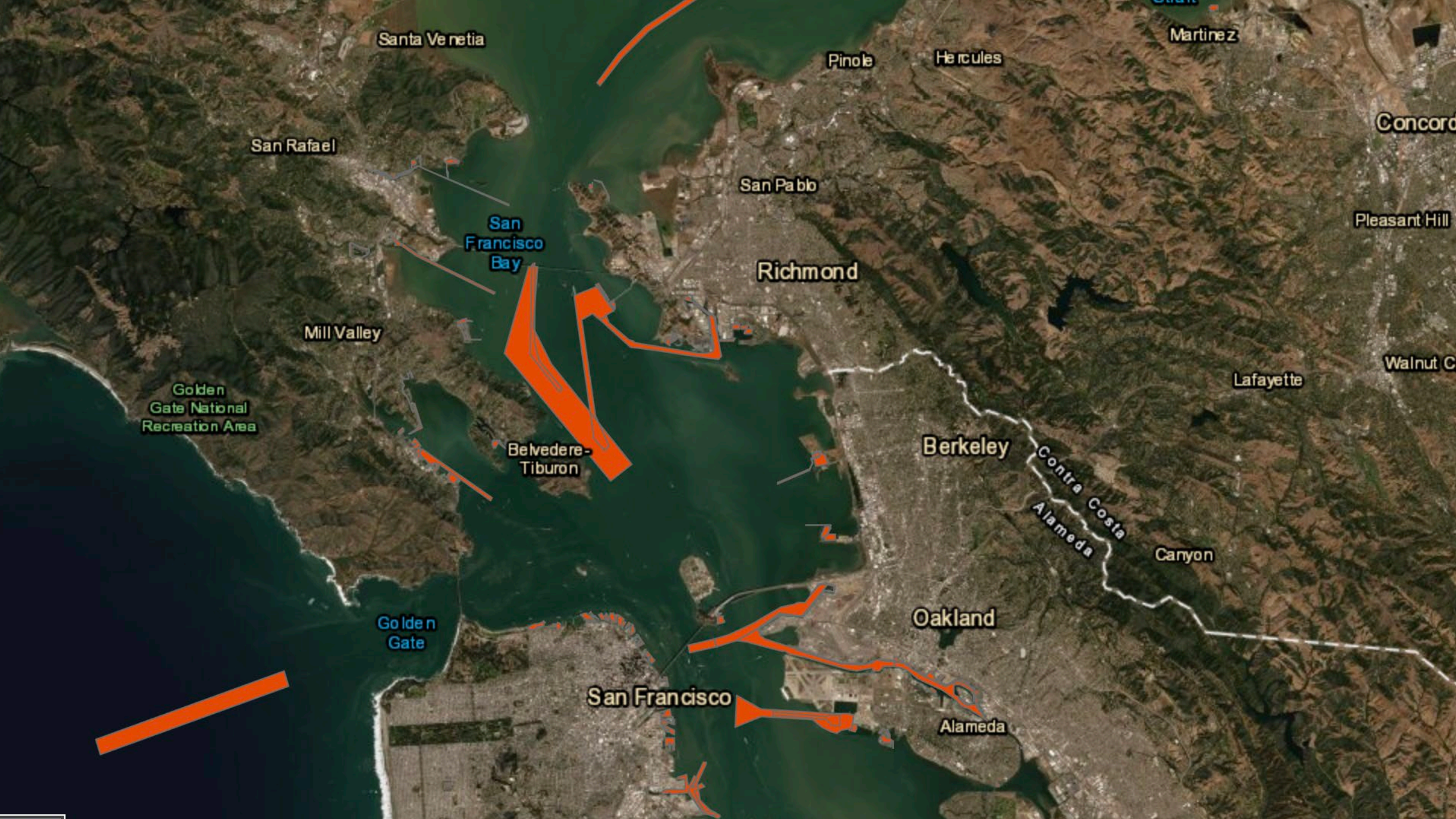
2014 Baywide Survey  
by Merkel & Assoc., Inc.

October 29, 2022



2019 Richardson Bay Survey  
by Merkel & Assoc. Inc.





Santa Venetia

Pinole

Hercules

Martinez

San Rafael

San Pablo

Concord

San Francisco Bay

Richmond

Pleasant Hill

Mill Valley

Golden Gate National Recreation Area

Belvedere-Tiburon

Berkeley

Lafayette

Walnut C

Golden Gate

Contra Costa  
Alameda

Canyon

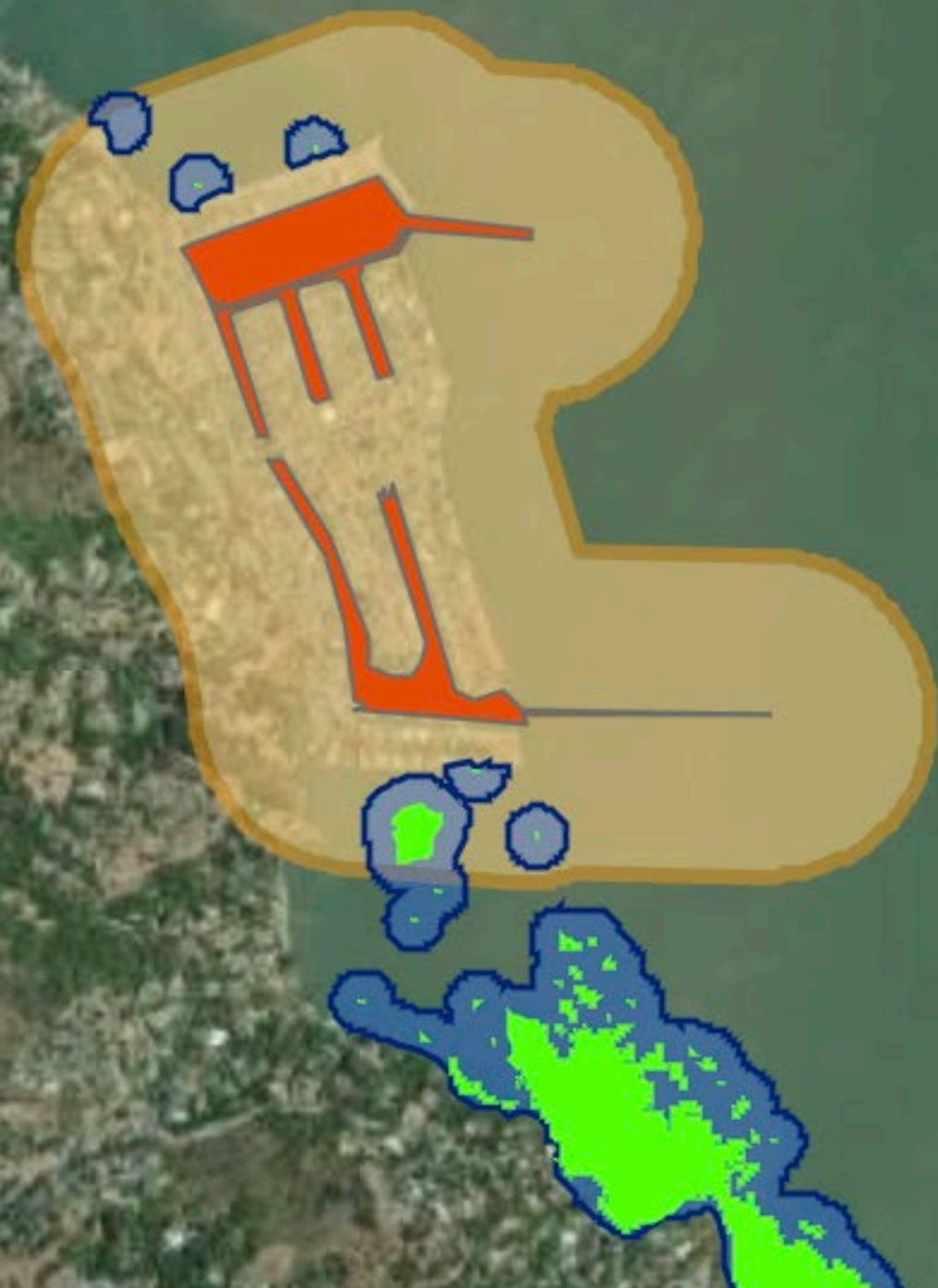
Oakland

San Francisco

Alameda

Ring Mountain

Atkinson Open  
Space Purchase





LindMarine

Game Time

Visit the updated information about [BCDC's COVID-affected operations](#).

CA.GOV Home Share: f t in

Contact Us Public Records Act Settings

bcdc SAN FRANCISCO BAY CONSERVATION & DEVELOPMENT COMMISSION

About Us

Planning

Permits

Enforcement

Public Meetings

Information Resources

Search



Library

Maps and Data

Greenhouse Gas

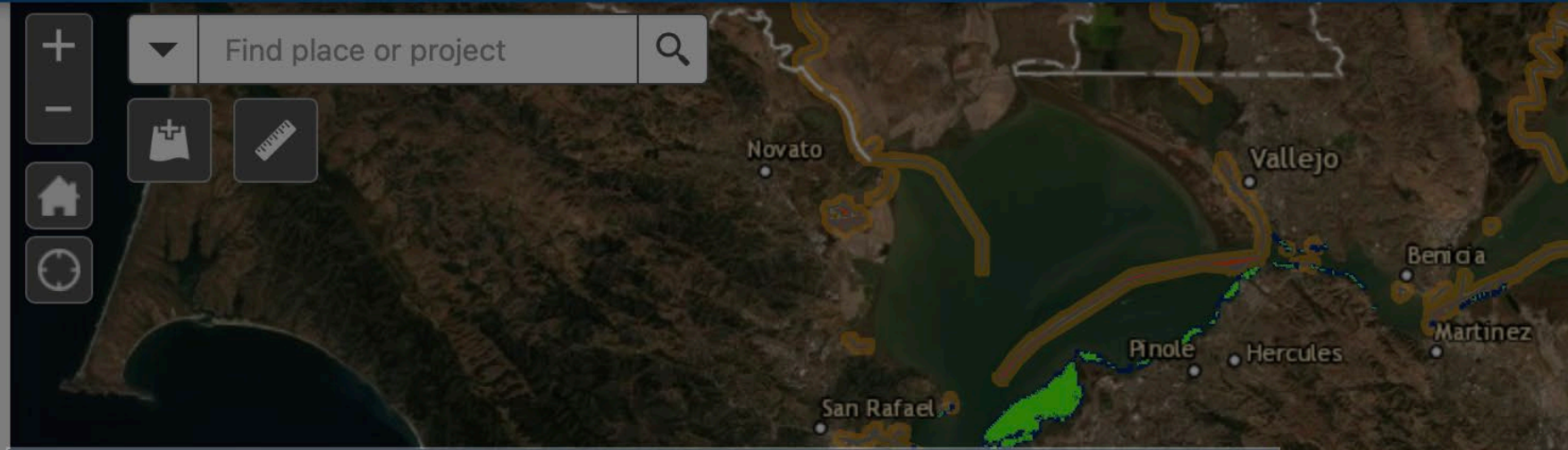
1 2 3 4 5 6 7

# San Francisco Bay Conservation and Development Commission

# San Francisco Bay Eelgrass Impact Assessment Tool

**Layers** 🔍 ☰

- Cumulative extent of eelgrass (surveyed 2003, 2009, 2014, and 2019) ...
- Eelgrass growth buffer (45 meters) - accounts for patchiness, temporal variation, and potential expansion ...
- Dredge footprints (2022) ...
- Dredge footprints buffer (250 meters) - eelgrass indirect impact zone ...



This map was created by BCDC to support the [LTMS Program](#). These data are intended for use as a general reference only and use of this information:

- does not replace the need for field surveys,
- does not represent legal boundaries, and
- does not have any regulatory authority.

Data are made available "as is" with no liability for use. Learn more in the "Item"

I agree to the above terms and conditions

OK

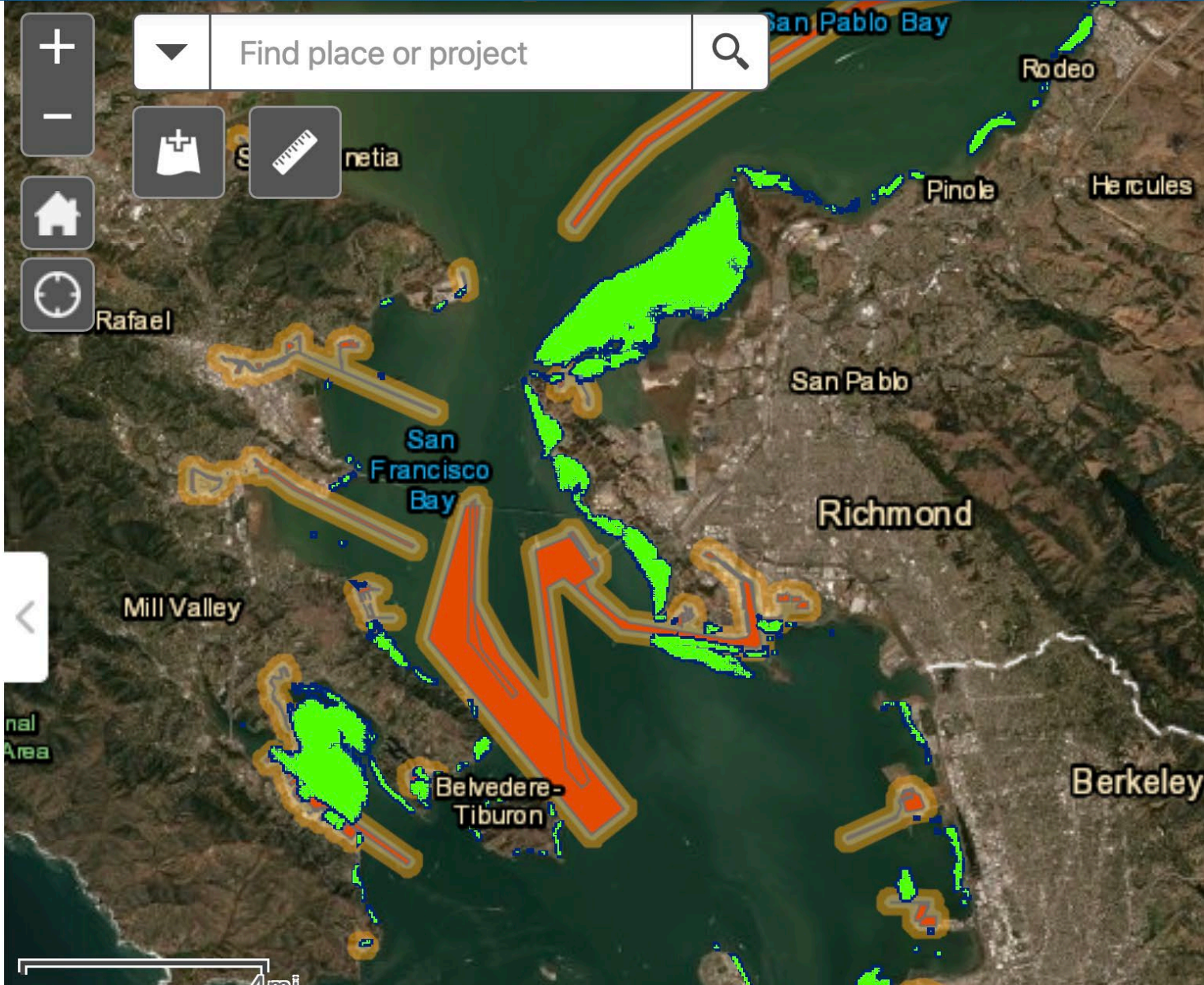


# San Francisco Bay Eelgrass Impact Assessment Tool



## Layers

- Cumulative extent of eelgrass (surveyed 2003, 2009, 2014, and 2019) ...
- Eelgrass growth buffer (45 meters) - accounts for patchiness, temporal variation, and potential expansion ...
- Dredge footprints (2022) ...
- Dredge footprints buffer (250 meters) - eelgrass indirect impact zone ...





Find place or project



Santa Venetia

San Pablo Bay  
Wildlife Area

San Rafael

Mare Island

Vallejo



**DREDGE FOOTPRINTS** - Extent shows the entire area permitted for dredging. Depths represent the maximum permitted depth in feet (MLW).

Project Name	Pinole Shoal Channel
Feature Name	Pinole Shoal
Fed or NonFed	Federal Dredge Project
Project Depth	-35.00
Overdepth	2.00
Permit	C2019.004.01
Updated by	USACE

[Zoom to](#)



El Sobrante





n  
isco  
odel

Schoonmaker  
Point Marina

Sea Trek  
- Kayaking  
Center

Schoonmaker  
Beach

Dunphy Park

Sausalito  
Marine  
Harbor

Pelican  
Harbor-  
Sausalito



# Thank You!



Heather Perry  
Jaime Lopez



GIS Team, Reg Staff  
Todd Hallenbeck  
Brenda Goeden



Claire Villegas  
Sayli Limaye

## Agency Partners



**NOAA**  
**FISHERIES**

