

MISSISSIPPI VALLEY DIVISION

Richie McComas
(601)-634-5615
Navigation & Dredging
Program Manager

Mississippi Valley
Division

March 24, 2022

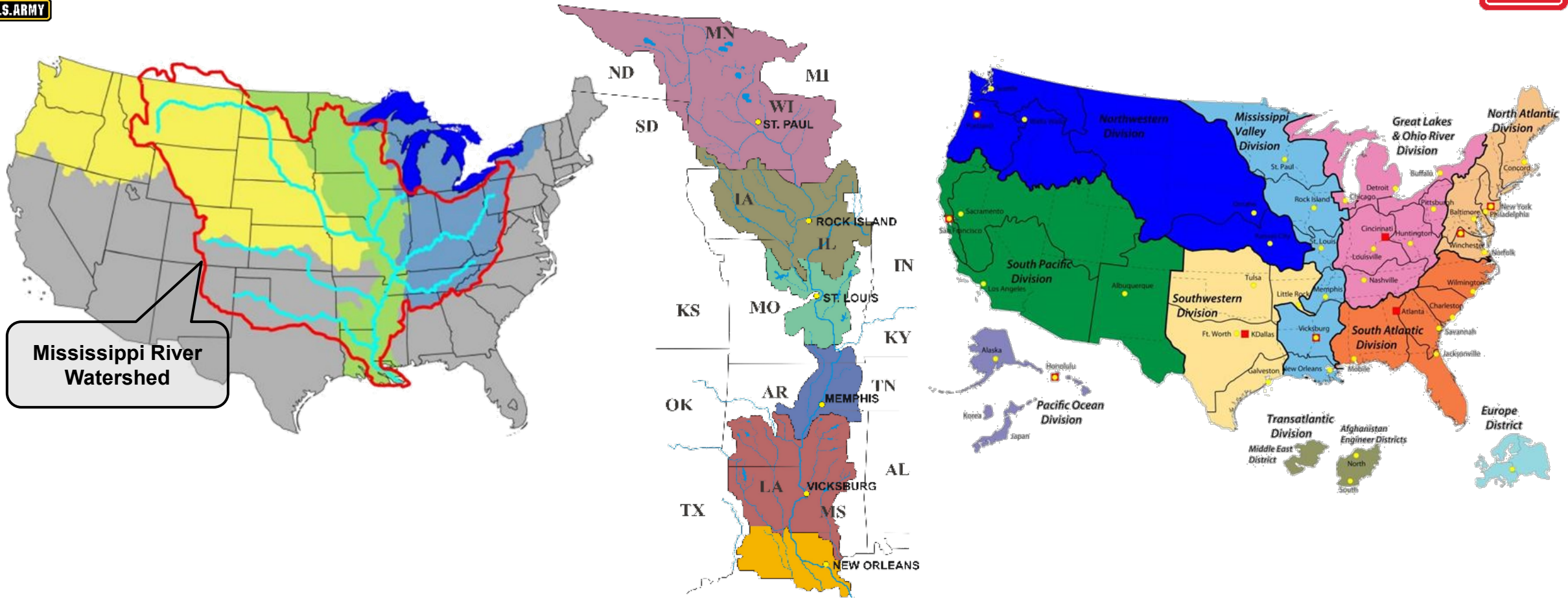


US Army Corps
of Engineers®





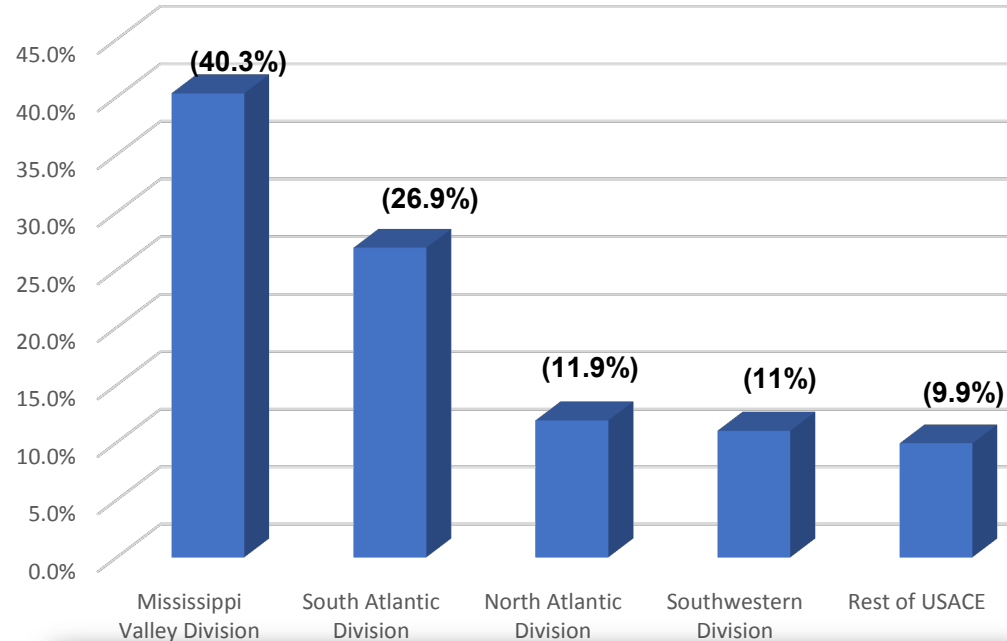
MISSISSIPPI VALLEY DIVISION



- Mississippi Valley Division - One of nine division commands.
- Oversee 6 Corps districts, encompass all/parts of 12 states.
- 1.25 million square-mile drainage basin.
- 5,000+ employees

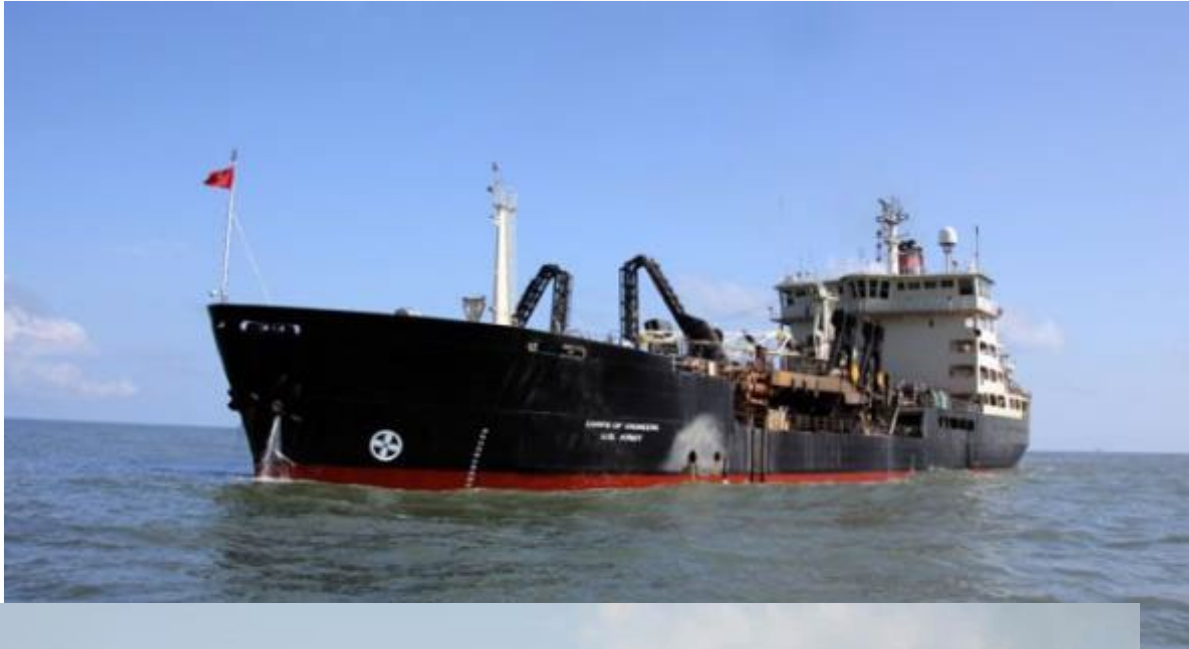
USACE DREDGING OPERATIONS

FY20 National Dredging Volume (264.5 MCY)





MISSISSIPPI VALLEY DIVISION DREDGES





FISCAL YEAR 2021 DREDGING



➤ Mississippi Valley Division Total

- \$411,858,500 
- 118,256,700 cubic yards 

➤ St. Paul District

- \$21,007,000 
- 1,462,900 cubic yards 

➤ Rock Island District

- \$17,779,700 
- 1,422,100 cubic yards 

➤ St. Louis District

- \$27,044,600 
- 6,380,000 cubic yards 



➤ Memphis District

- \$9,599,900 
- 2,766,100 cubic yards 

➤ Vicksburg District

- \$13,600,600 
- 2,707,400 cubic yards 

➤ New Orleans District

- \$322,826,700 
- 103,518,200 cubic yards 



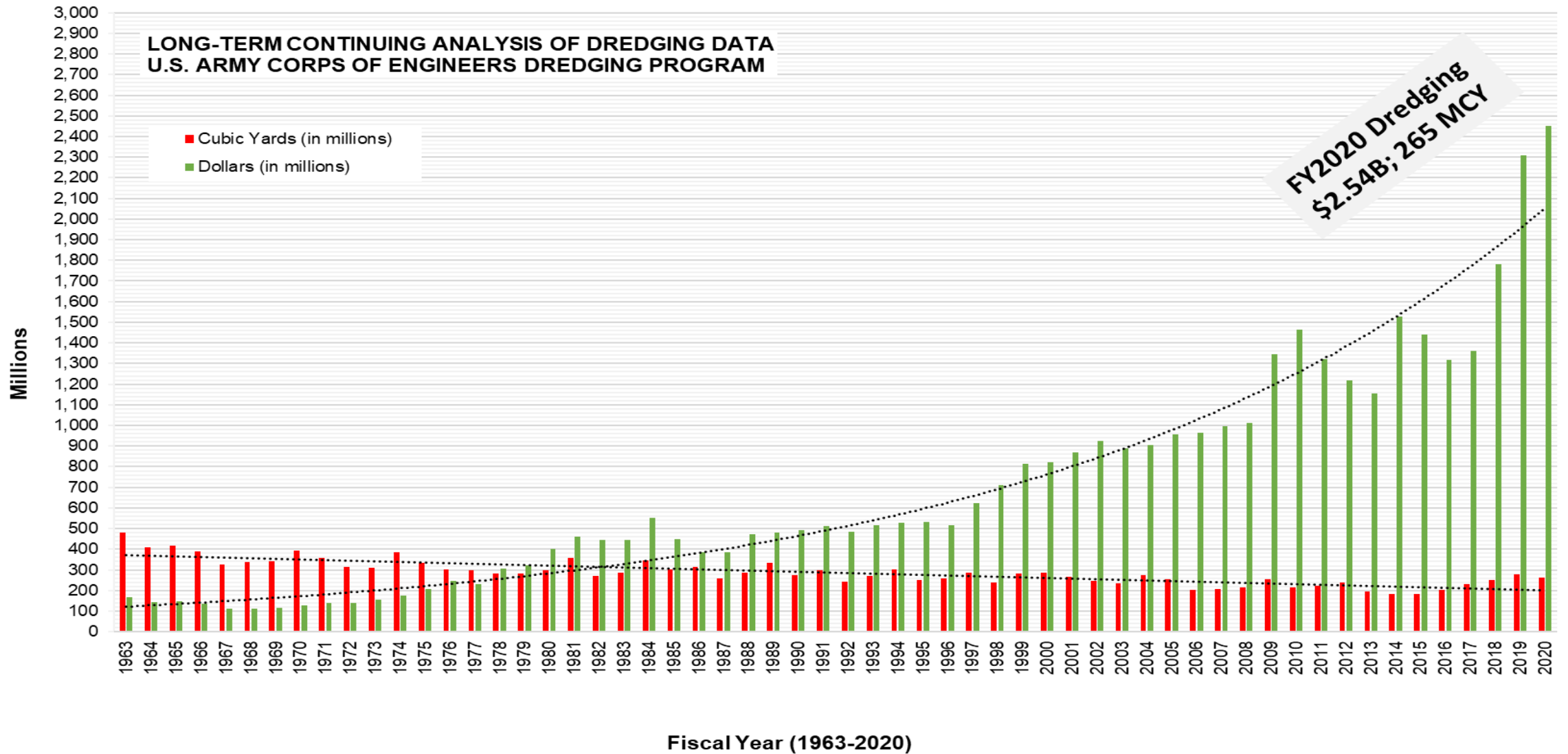
FISCAL YEAR 2022 BUDGET FOR DREDGING

President's Budget

- \$278,397,000 O&M 
- \$15,578,000 MR&T 

Infrastructure Investment and Jobs Act (IIFA)

- ~\$60M OM
- \$9.39M MRT





SOLUTIONS



- Working Together
 - Government and Industry
- Communication
 - Contracting Officer
 - District Dredging Coordinator
- New Processes
 - Regional Dredge Demo Program – Allows Flexibility in Arrival Time
 - Regional Language in District Contracts – Allows Dredge to Move Where Needed
 - Early Award Contract – Ensures Dredge Availability for SWP
 - Beneficial Use Programs
 - Island Creation
 - Marsh/Wetland Creation
 - New Land for Construction
 - Construction Material

QUESTIONS??

1938



1985



2009 Pilot project =
4700 acres of wetland
creation/improvement
-within the Federal Standard

2015

