

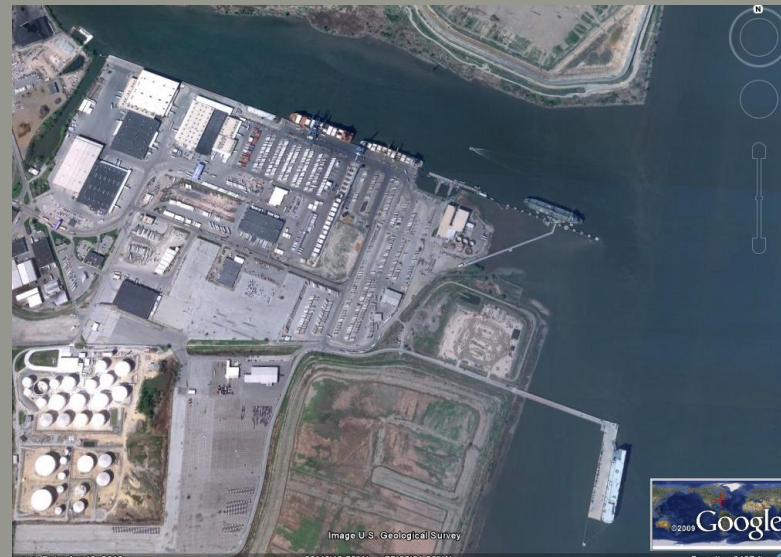
Eastern Chapter of WEDA Fall Conference

USACE North Atlantic Division Philadelphia District (NAP)

Ken Goldberg

Chief, Technical Support Branch
Operations Division

October 2018
Savannah, GA



US Army Corps
of Engineers®



NAVIGATION DREDGING PROJECTS FY18

Philadelphia District Office

Wilmington Harbor, DE; O&M

C+D Canal / Upper
Chesapeake Bay, MD; O&M

Chesapeake City Basin,
MD; O&M

New Jersey Intracoastal
Waterway; O&M

Philadelphia to the Sea
Maintenance, Delaware
River;
O&M



US Army Corps
of Engineers



U.S. ARMY

PROJECTED NAVIGATION DREDGING FY19

Philadelphia District Office

Delaware River, Philadelphia
to the Sea Maintenance
Dredging; O&M

Delaware River Main Channel
(Reach B); CG

Wilmington Harbor, DE; O&M

Upper Chesapeake Bay/
C&D Canal, MD; O&M

Philadelphia to Trenton,
Delaware River; O&M

Schuylkill River; O&M

Mispillon River, DE;
O&M

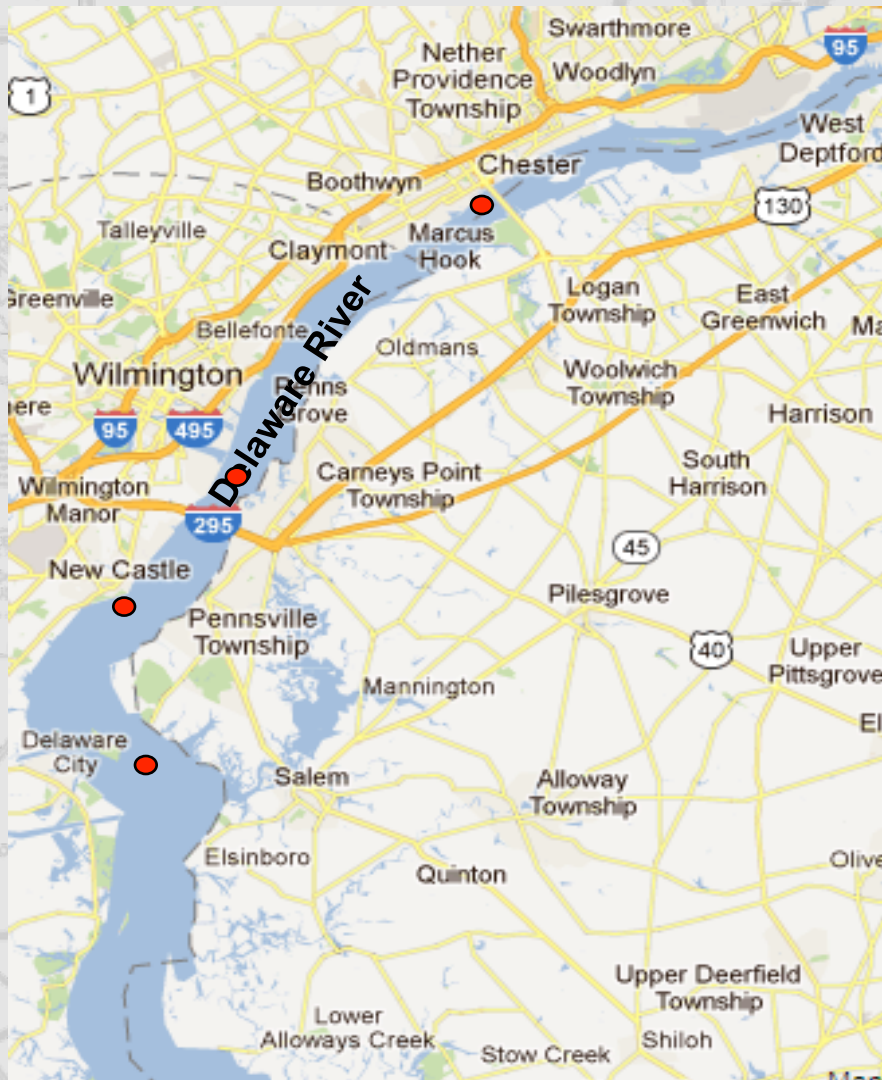


US Army Corps
of Engineers



U.S. ARMY

DELAWARE RIVER, PHILADELPHIA TO THE SEA (MAINTENANCE DREDGING)



Location: Delaware River

**Ranges: Marcus Hook, New Castle,
Deepwater, Cherry Island**

Dredge Type: Hydraulic

Placement: Killcohook / Pedricktown

Quantity: 3,000,000 cy

Depth: 45' + 1' allowable overdepth

Bus. Type: Unrestricted

Advertise: July 2019

Award: August 2019

Commence Dredging: Sept 2019

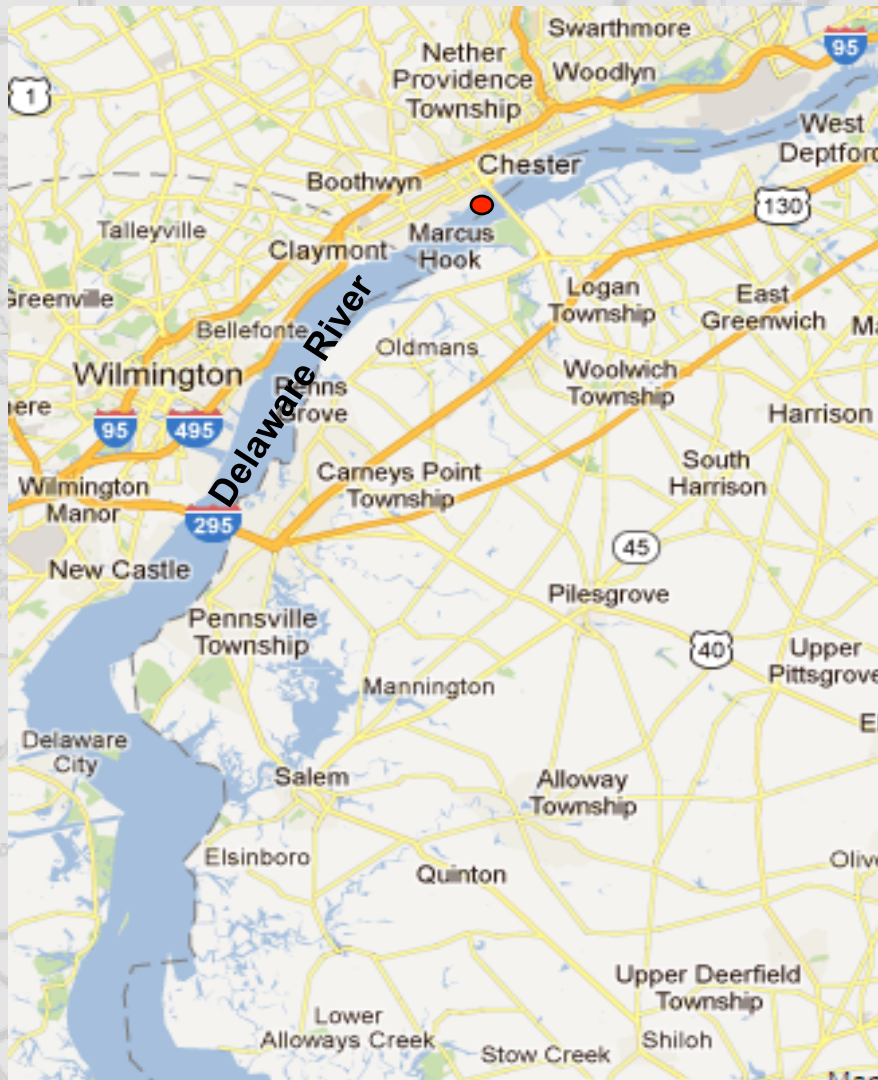
Dredge Complete: 31 December 2019



US Army Corps
of Engineers®



DELAWARE RIVER MAIN CHANNEL (REACH B)



Location: Delaware River

Ranges: Marcus Hook

Dredge Type: Bucket

Placement: Open Water

Quantity: 200,000 cy

Depth: 45' + 1' allowable overdepth

Bus. Type: Unrestricted

Advertise: July 2019

Award: August 2019

Commence Dredging: September 2019

Dredge Complete: November 2019



US Army Corps
of Engineers



U.S. ARMY

WILMINGTON HARBOR, DE



Location: Wilmington Harbor, DE

Dredge Type: Hydraulic

Placement: Wilmington North

Quantity: 500,000 cy

Depth: 38' + 1' allowable overdepth

Bus. Type: Unrestricted

Advertise: May 2019

Award: June 2019

Commence Dredging: July 2019

Dredging Complete: August 2019

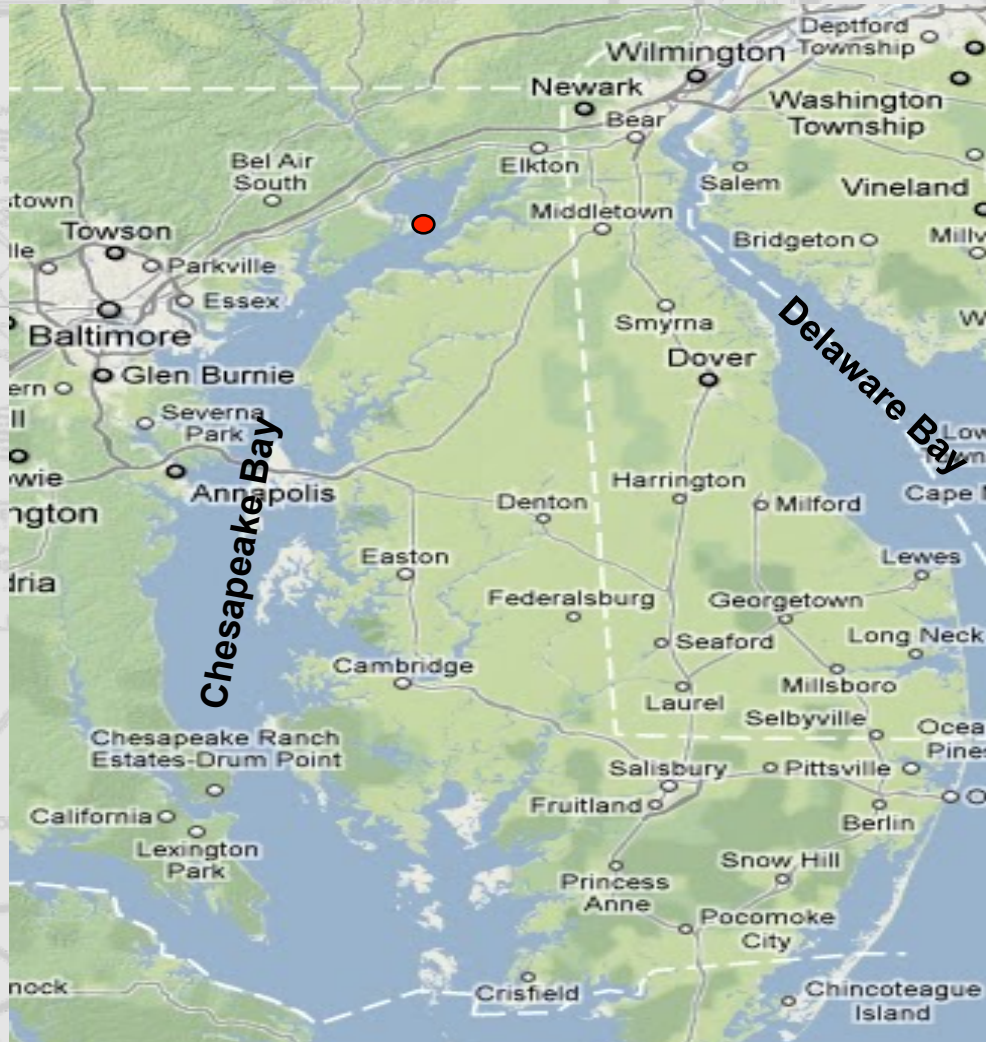


US Army Corps
of Engineers



U.S. ARMY

UPPER CHESAPEAKE BAY / C&D CANAL, MD



Location: Upper Chesapeake Bay

Dredge: Hydraulic / Bucket

Placement: Pearce Creek

Quantity: 500,000 cy.

Depth: 37'+ 1' allowable overdepth

Bus. Type: Unrestricted

Advertise: July 2019

Award: August 2019

Commence Dredging: October 2019

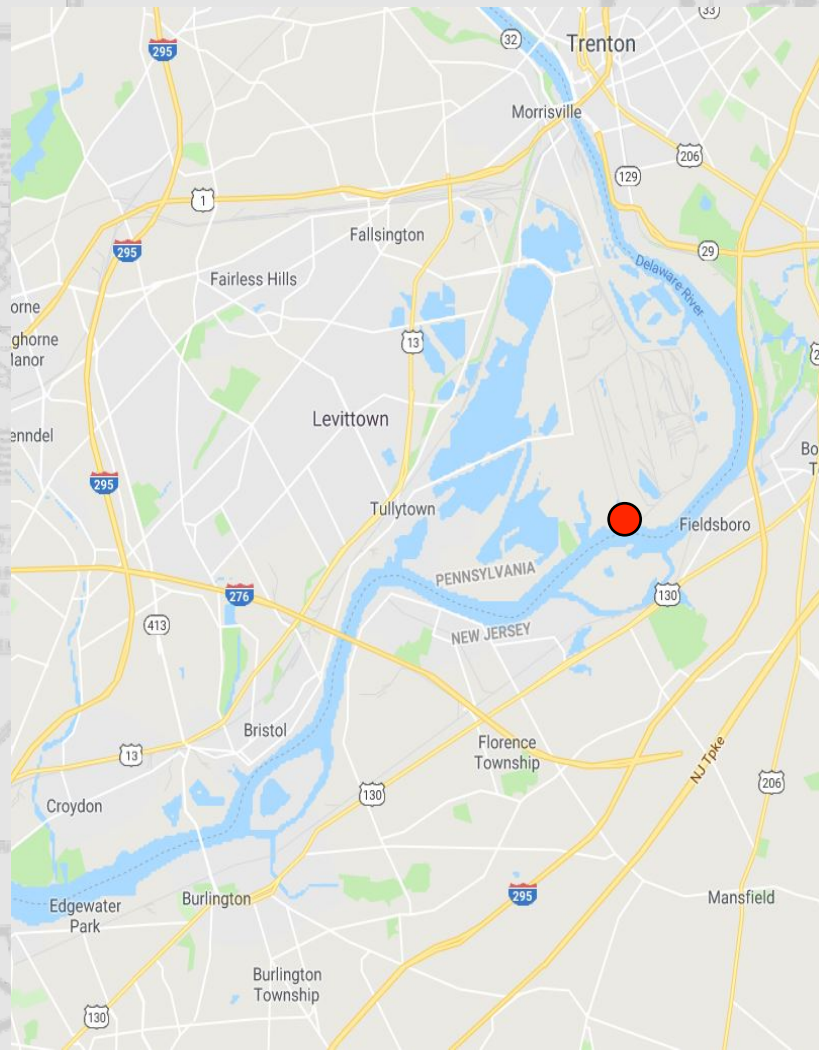
Complete: December 2019



US Army Corps
of Engineers™



DELAWARE RIVER, PHILADELPHIA TO TRENTON (FAIRLESS TURNING BASIN)



Location: Delaware River

Ranges: Fairless Turning Basin

Dredge Type: Hydraulic

Placement: Money Island

Quantity: 200,000 cy

Depth: 40' + 1' allowable overdepth

Bus. Type: Unrestricted

Advertise: May 2019

Award: July 2019

Commence Dredging: August 2019

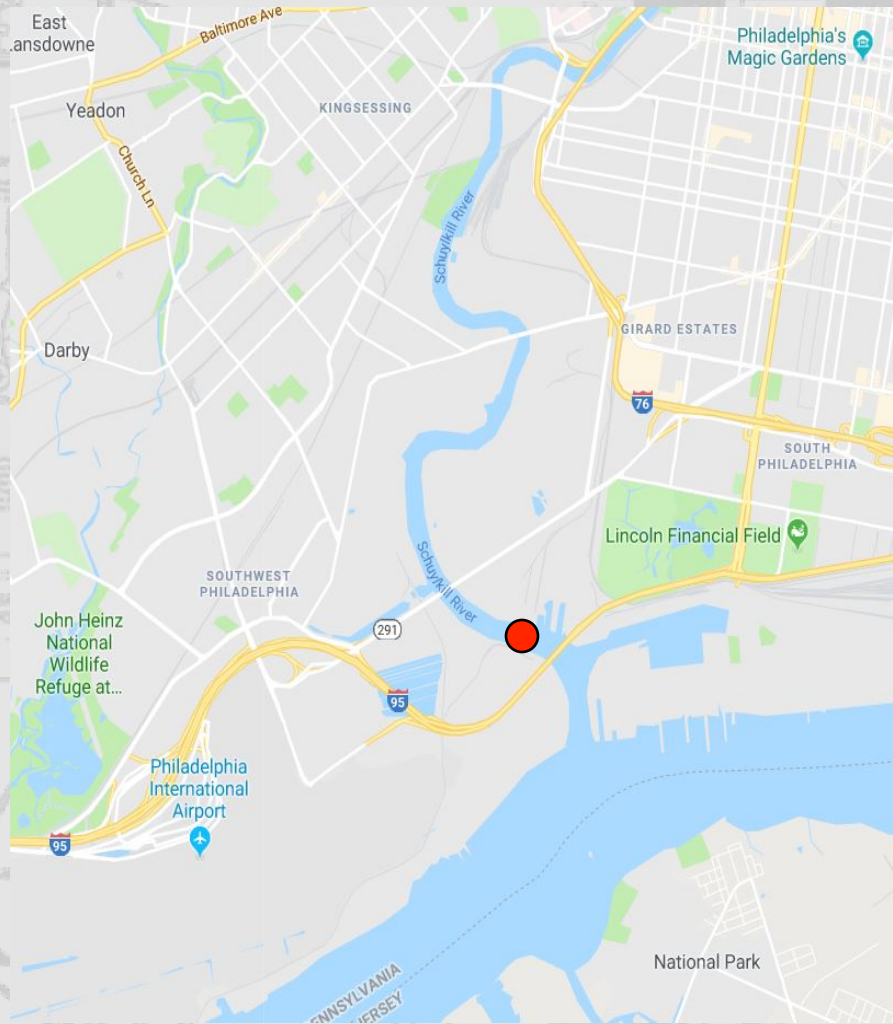
Dredge Complete: September 2019



US Army Corps
of Engineers



SCHUYLKILL RIVER, PA (LOWER REACH)



Location: Schuylkill River

Ranges: Lower Reach

Dredge Type: Hydraulic

Placement: Fort Mifflin

Quantity: 650,000 cy

Depth: 33' + 1' allowable overdepth

Bus. Type: Unrestricted

Advertise: Feb 2019

Award: April 2019

Commence Dredging: May 2019

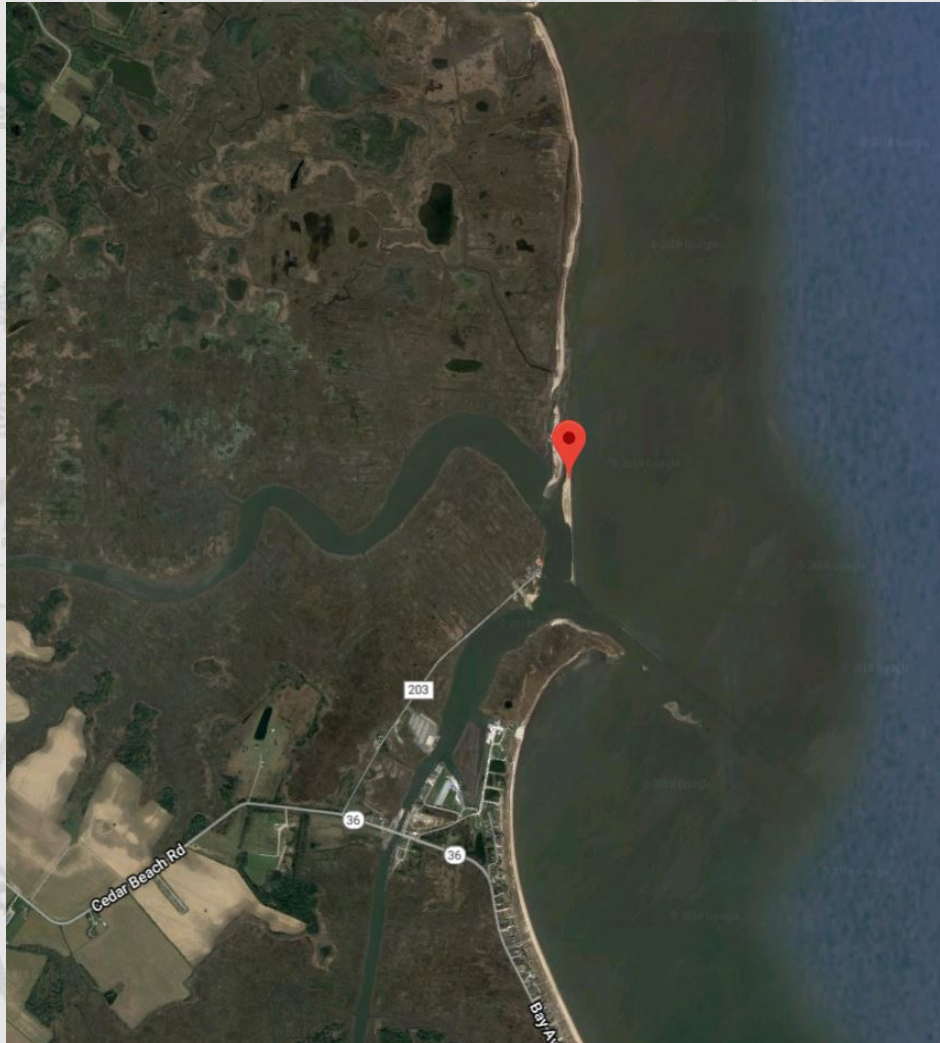
Dredge Complete: June 2019



US Army Corps
of Engineers



MISPILLON ENTRANCE CHANNEL & INNER REACH, DE



Location: Mispillon River, DE

Dredge Type: Hydraulic

Placement: Conch Bar Island

Quantity: 25,000 cy

Depth: 9' + 1' allowable overdepth

Bus. Type: Unrestricted

Advertise: May 2019

Award: July 2019

Commence Dredging: August 2019

Dredging Complete: September 2019



US Army Corps
of Engineers



U.S. ARMY