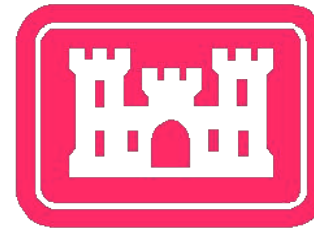




US Army Corps of Engineers
New England District



New England District FY 2018 Dredging Program



**US Army Corps
of Engineers®**
New England District

170 Navigation Projects

68 Deep Draft Projects

13 Deep Draft Projects 31 feet or Greater

158 Breakwaters or Jetties

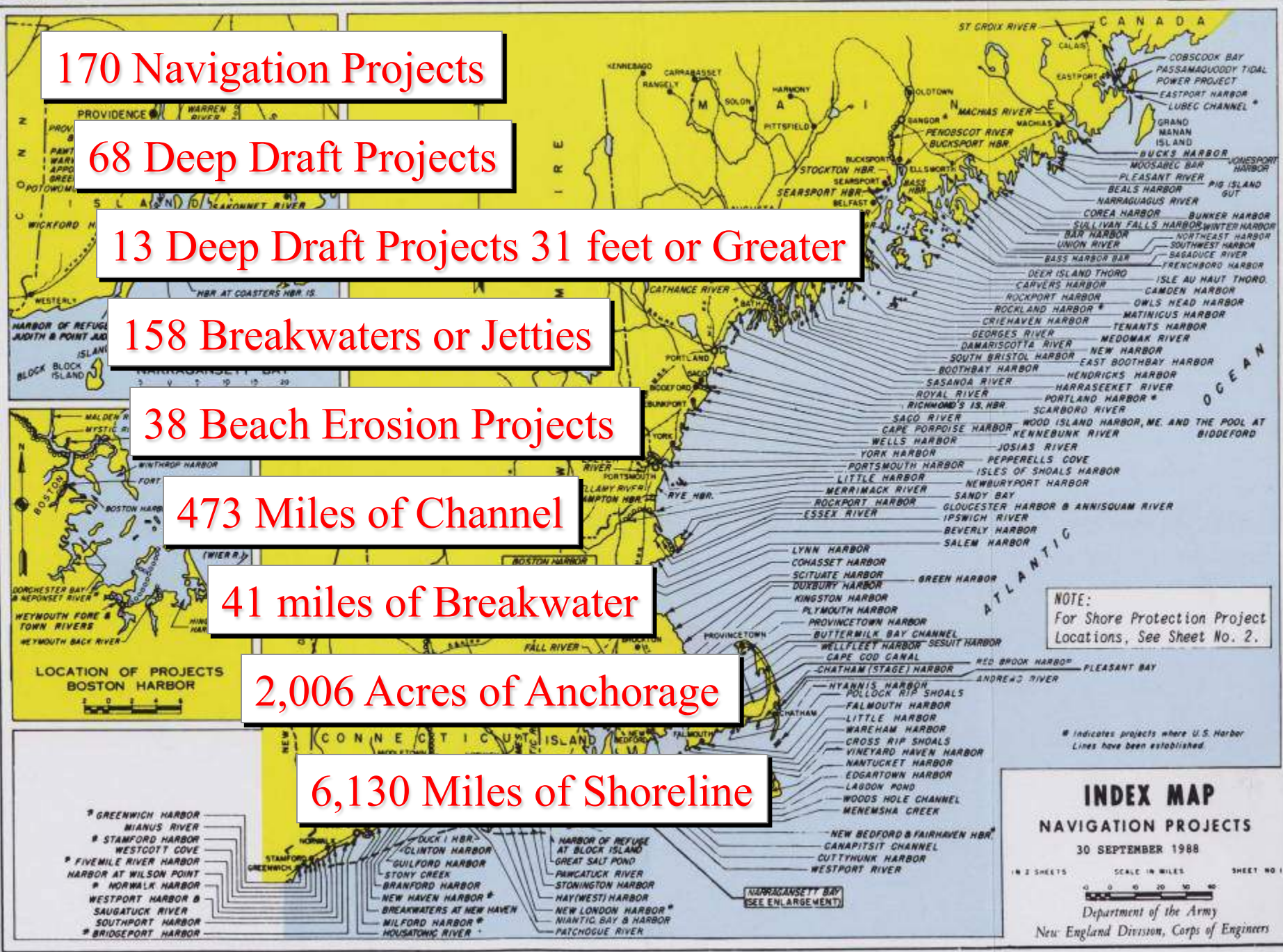
38 Beach Erosion Projects

473 Miles of Channel

41 miles of Breakwater

2,006 Acres of Anchorage

6,130 Miles of Shoreline



NOTE:
For Shore Protection Project
Locations; See Sheet No. 2.

INDEX MAP
NAVIGATION PROJECTS
 30 SEPTEMBER 1988
 1 IN 2 SHEETS SCALE IN MILES SHEET NO. 1
 Department of the Army
 New England Division, Corps of Engineers

LOCATION OF PROJECTS
 BOSTON HARBOR

- * GREENWICH HARBOR
- * MIANUS RIVER
- * STAMFORD HARBOR
- * WESTCOTT COVE
- * FIVEMILE RIVER HARBOR
- * HARBOR AT WILSON POINT
- * NORWALK HARBOR
- * WESTPORT HARBOR
- * SAUGATUCK RIVER
- * SOUTHPORT HARBOR
- * BRIDGEPORT HARBOR

- * DUCK I HBR.
- * GILFORD HARBOR
- * GUILFORD HARBOR
- * STONY CREEK
- * BRANFORD HARBOR
- * NEW HAVEN HARBOR
- * BREAKWATERS AT NEW HAVEN
- * MILFORD HARBOR
- * HOUSATONIC RIVER

- * HARBOR OF REFUGE AT BLOCK ISLAND
- * GREAT SALT POND
- * FAUCATUCK RIVER
- * STONINGTON HARBOR
- * HAY (WEST) HARBOR
- * NEW LONDON HARBOR
- * NANTIC BAY & HARBOR
- * PATCHOQUE RIVER

- * NEW BEDFORD & FAIRHAVEN HBR.
- * CANAPITSIT CHANNEL
- * CUTTYHUNK HARBOR
- * WESTPORT RIVER
- * LYNN HARBOR
- * COHASSET HARBOR
- * SCITUATE HARBOR
- * DUXBURY HARBOR
- * KINGSTON HARBOR
- * PLYMOUTH HARBOR
- * PROVINCETOWN HARBOR
- * BUTTERMILK BAY CHANNEL
- * WELLFLEET HARBOR
- * SESUIT HARBOR
- * CAPE GOD CANAL
- * CHATHAM (STAGE) HARBOR
- * RED BROOK HARBOR
- * ANDREWS RIVER
- * PLEASANT BAY
- * HYANNIS HARBOR
- * POLLOCK RIP SHOALS
- * FALMOUTH HARBOR
- * LITTLE HARBOR
- * WAREHAM HARBOR
- * CROSS RIP SHOALS
- * VINEYARD HAVEN HARBOR
- * NANTUCKET HARBOR
- * EDGARTOWN HARBOR
- * LABDON POND
- * WOODS HOLE CHANNEL
- * MENEMSHA CREEK



US Army Corps of Engineers New England District



Schedule For FY-18 O&M Dredging Work for New England District North Atlantic Division

NAE O&M and New Work Dredging Program

				FY 18												Updated October 2016	
				SEP	OCT	NOV	DEC	JAN	FEB	MAR	APR	MAY	JUN	JUL	AUG	SEP	OCT
Project	Contractor & Dredge	AWD	Start														
1	Boston Harbor, MA (Maintenance) Bucket	Great Lakes Dredge and Dock	10/18/2016	[Existing Contract]													
1,805,000 CY																	
2	Menemsha Creek, MA Pipeline	H&L Dredging	10/1/2017	[Existing Contract]													
60,000 CY																	
4	Housatonic River, CT Bucket/Hopper	Cashman Dredging		[Existing Contract]													
340,000 CY																	
5	North Cove, CT Bucket	Don Jon Marine	9/20/2017	[Hopper]													
290,000 CY																	
6	York Harbor, ME Bucket	TBD	9/19/2017	[Hopper]													
250,000 CY																	
7	Saco River, ME Pipeline	TBD		[Hopper]													
100,000																	
8	Boston Harbor Improvement Dredging Bucket	TBD	TBD	[Hopper]													
12,000,000																	
9	Saco River, ME Government			[Hopper]													
50,000 CY																	
10	Patchogue River, CT Government			[Hopper]													
10,000 CY																	
11	Wells, ME Government			[Hopper]													
15,000 CY																	



US Army Corps of Engineers

DATE

SCALE

MARK

DESCRIPTION

DATE

SCALE

MARK

DESCRIPTION

DATE

SCALE

MARK

DESCRIPTION

DATE

SCALE

MARK

DESCRIPTION

DATE

SCALE

MARK

DESCRIPTION

DATE

SCALE

MARK

DESCRIPTION

DATE

SCALE

MARK

DESCRIPTION

DATE

SCALE

MARK

DESCRIPTION

DATE

SCALE

MARK

DESCRIPTION

DATE

BOSTON HARBOR MAINTENANCE DREDGING

- MAINTENANCE DREDGING FOR 40-FOOT MAIN SHIP CHANNEL, 40-FOOT INNER CONFLUENCE AND 35-FOOT CHANNEL
- MAIN SHIP CHANNEL CAD CELL



Boston Harbor

Project Depth: 40' MLLW Main Ship Channel, 35' MLLW Outside M.S.C

Last Dredged: 2012

Quantity: 1,000,000 cy CAD Cell Construction

800,000 cy Maintenance Dredging

Material Type: Sand & Gravel

Equipment Type: Mechanical

Disposal Sites: Open Water/CAD Cell

Haul Distance: 20 Miles (Open Water)

Project Award: Great Lakes Dredge and Dock Company - \$12,840,030

FY17/18 Dredging



Menemsha Creek

Project Depth: 10' Channels & 6' Anchorage

Last Dredged: 2016

Quantity: 40,000 cy

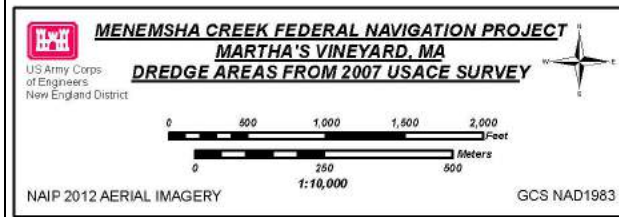
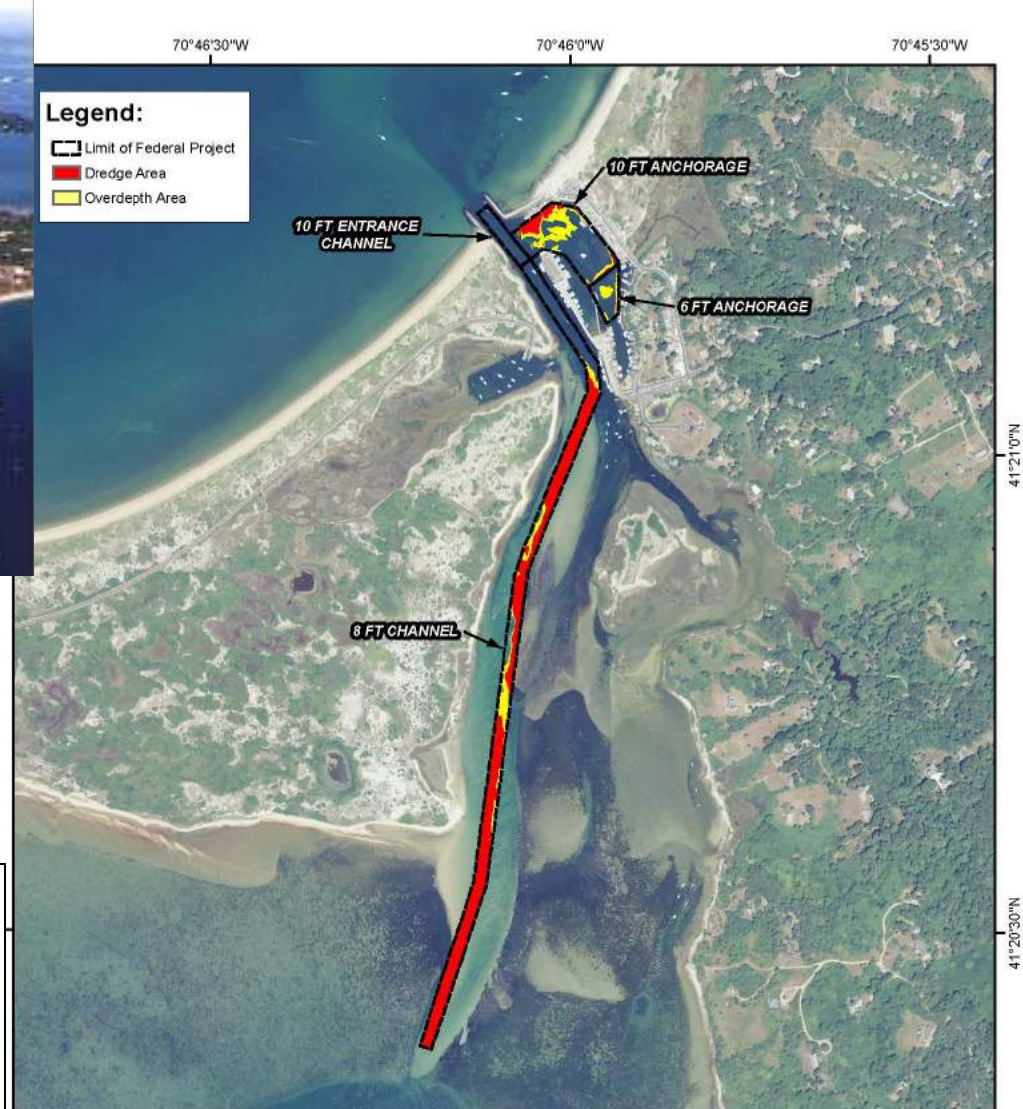
Material Type: Sand

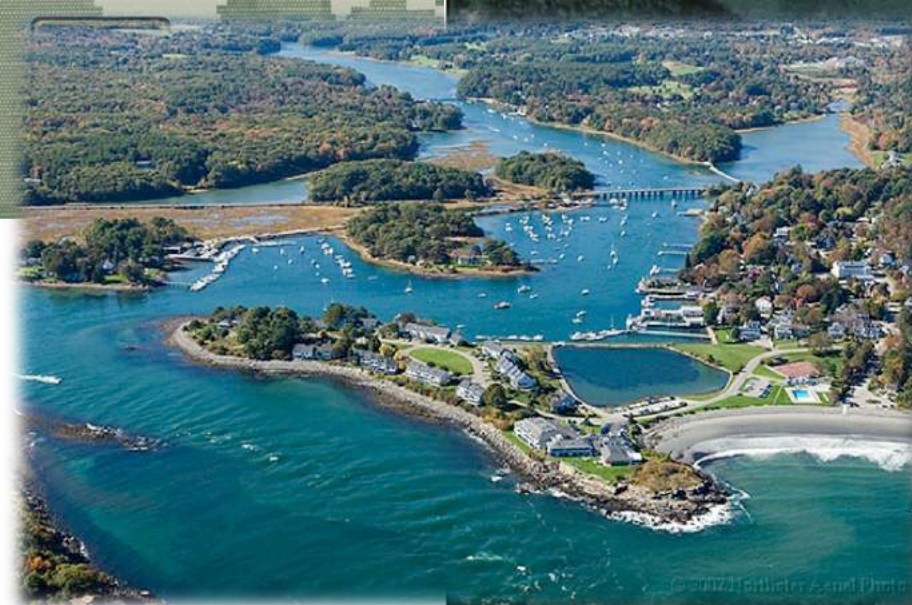
Equipment Type: Hydraulic

Disposal Site: Adjacent Beach

Bonding Co. Takeover w/H&L Dredging

Restart 11/1/2016





York Harbor

Project Depth: 8' MLLW

Last Dredged: 1996

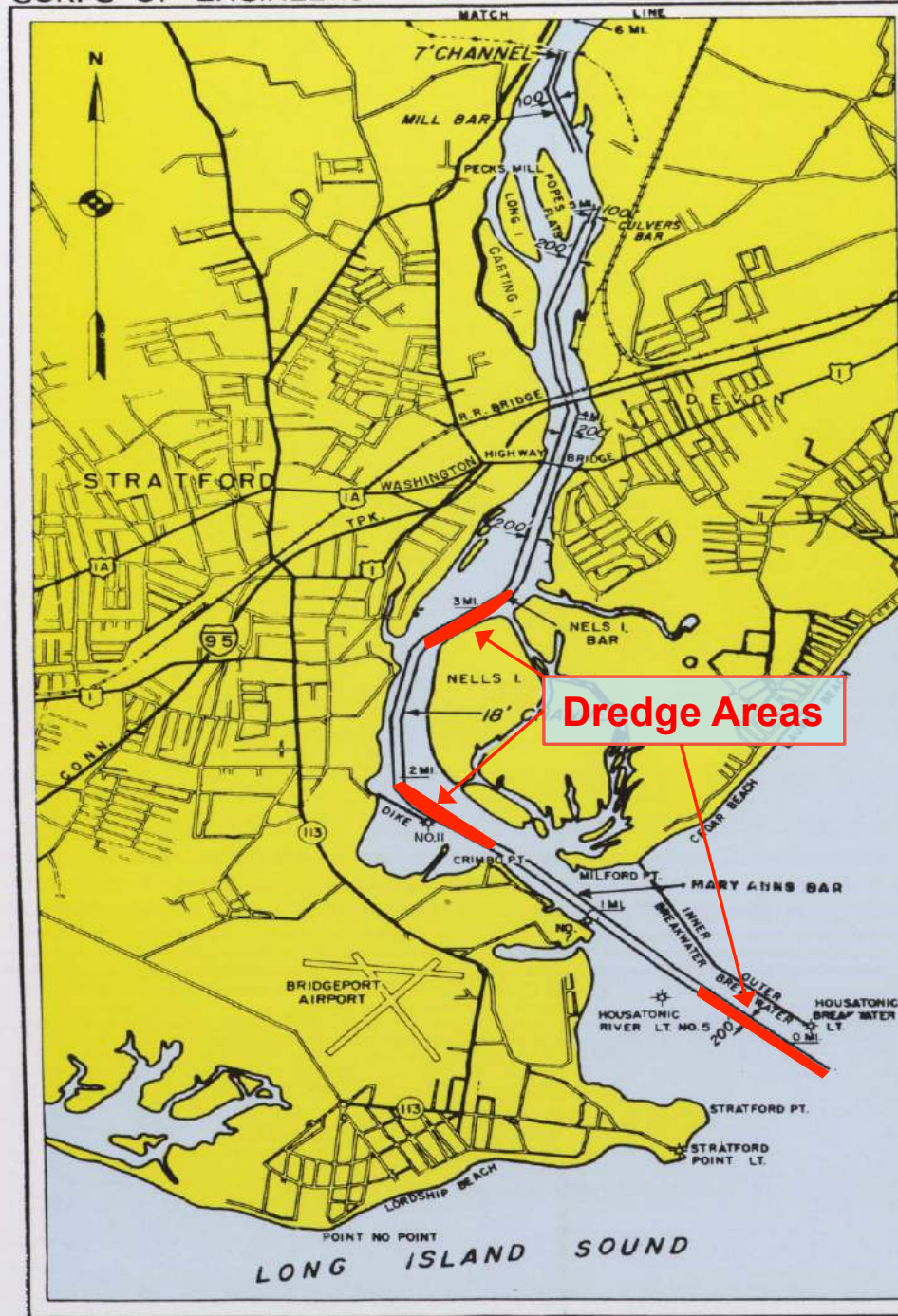
Quantity: 50,000 cy

Material Type: Silt/Sand/Clay

Equipment Type: Mechanical

Disposal Site: Cape Arundel DS





Housatonic River

Project Depth: 18' Channel

Last Dredged: 2013

Quantity: 340,000 cy

Material Type: Sand

Equipment Type: Bucket/Hopper

Disposal Site: Beach

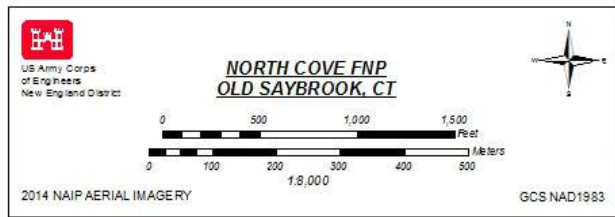
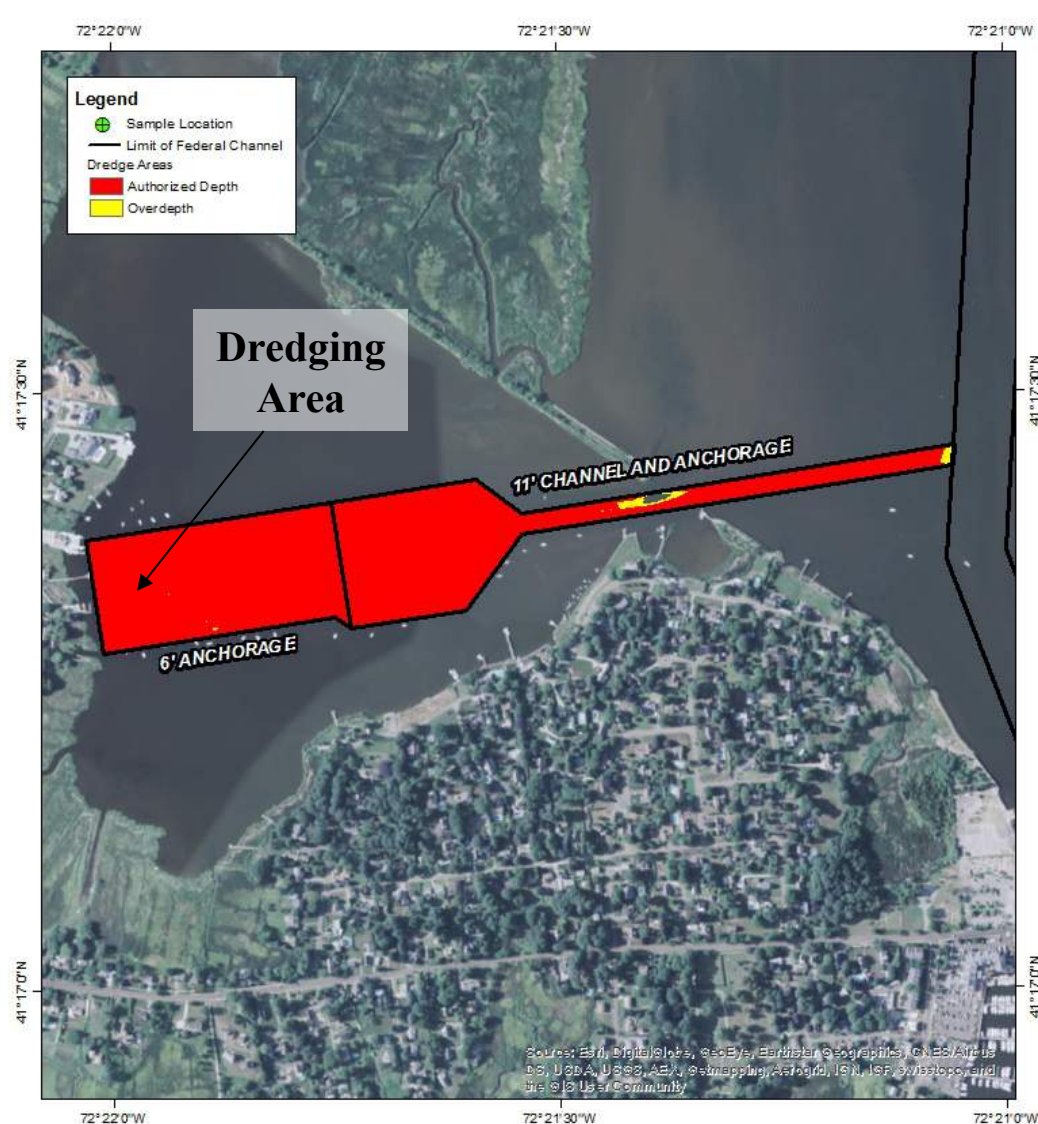
Cashman Dredging

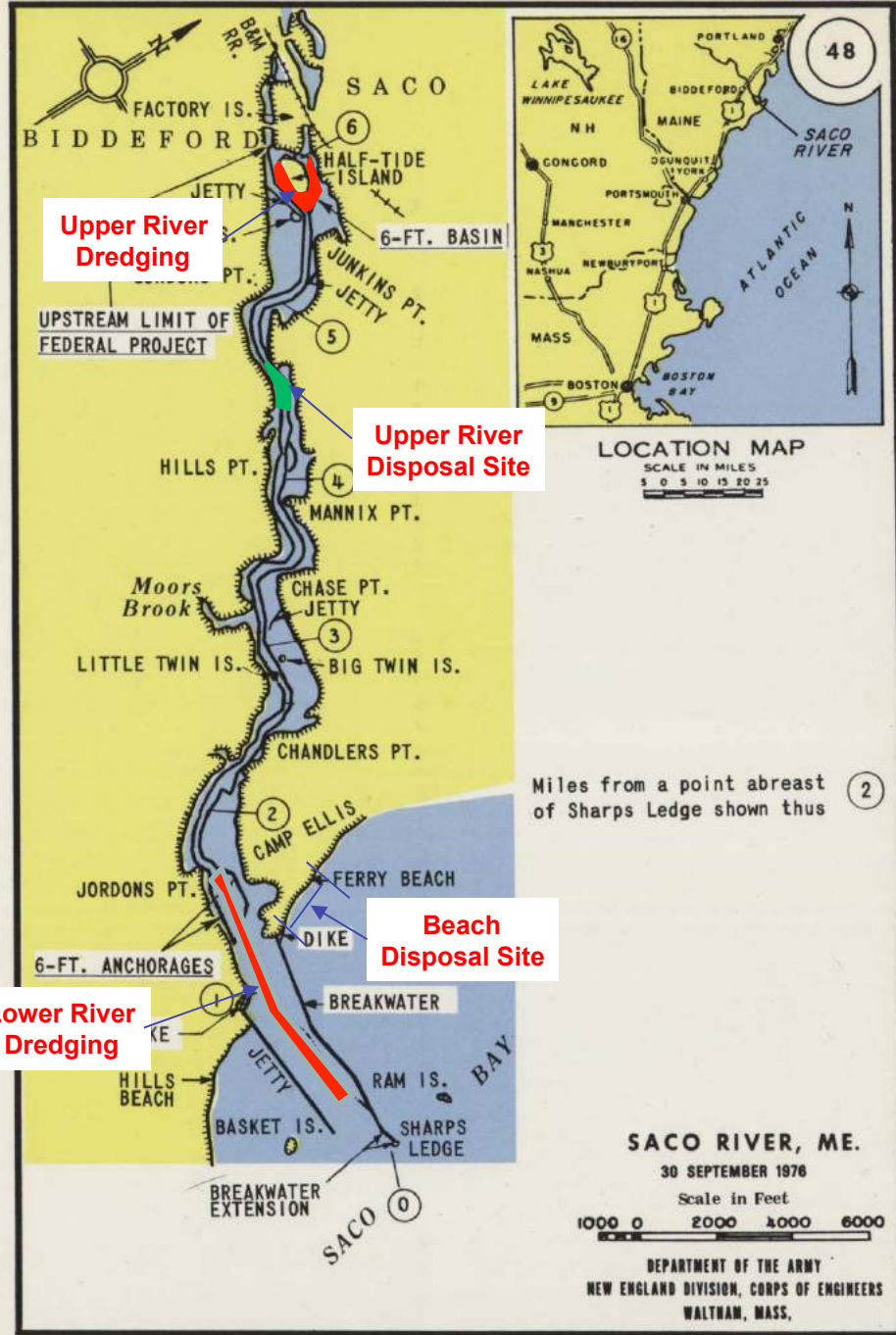
Bid - \$9,319,000



North Cove

Project Depth: 6' & 11' MLLW
Last Dredged: 2009
Quantity: 290,000 cy
Material Type: Silt/Clay
Equipment Type: Mechanical
Disposal Site: Upland/CAD Cell





Saco River

Project Depth: 6' MLLW

Last Dredged: 1994

Quantity: 140,000 cy

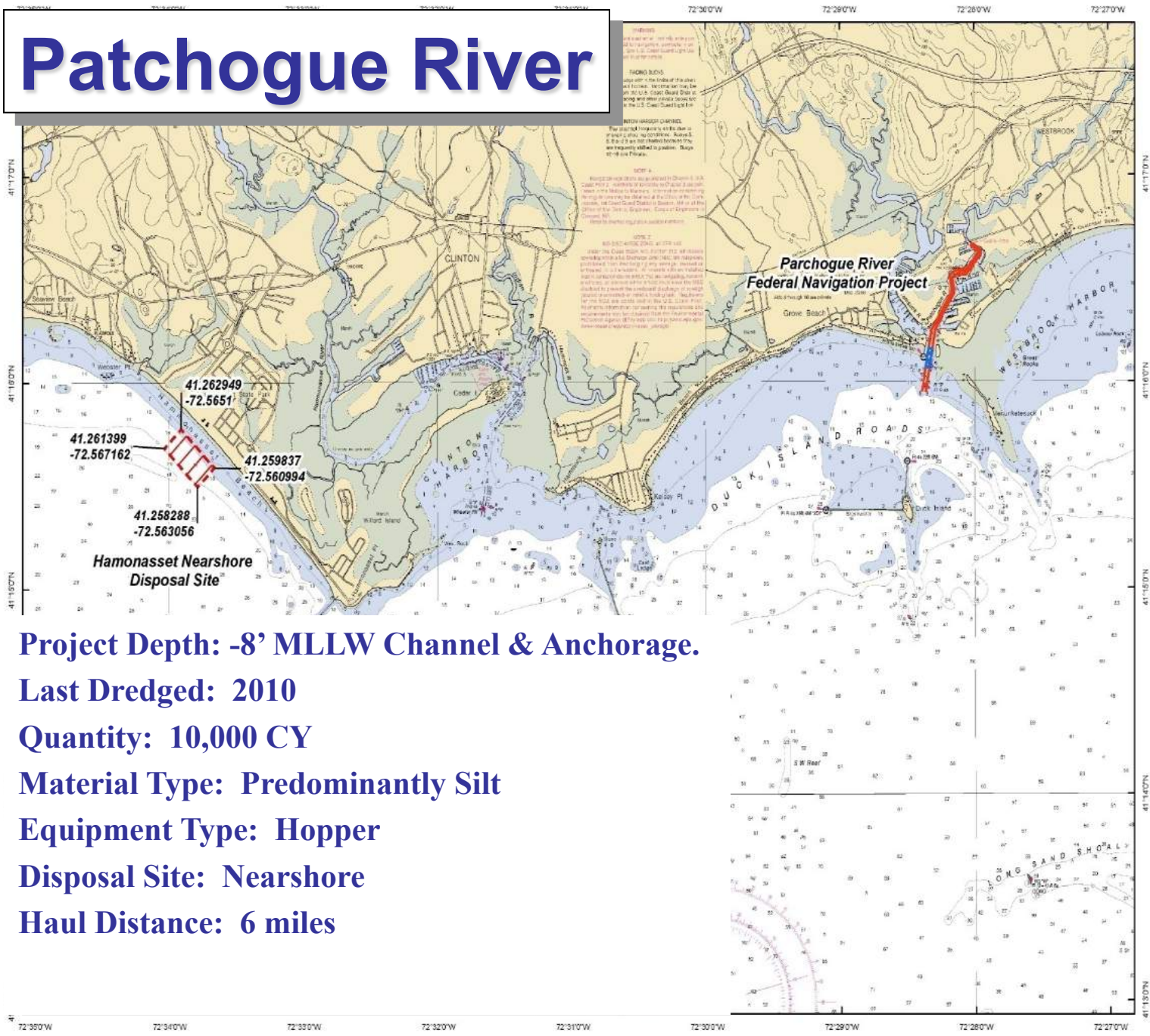
Material Type: Sand/Silt

**Equipment Type: Hydraulic dredge/
hopper**

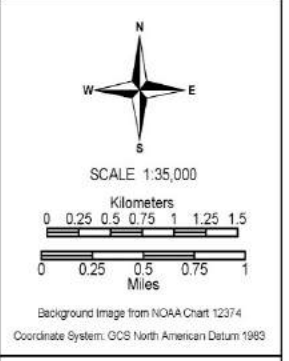
Disposal Sites: Beach/In-River

Anticipated FY 18 funding

Patchogue River



ATTACHMENT NO. 2
PATCHOGUE RIVER AND
NEARSHORE DISPOSAL SITE
WESTBROOK AND MADISON, CT



Legend:

-  Federal Navigation Project
-  Dredge Area
-  Nearshore Disposal Site

Project Depth: -8' MLLW Channel & Anchorage.

Last Dredged: 2010

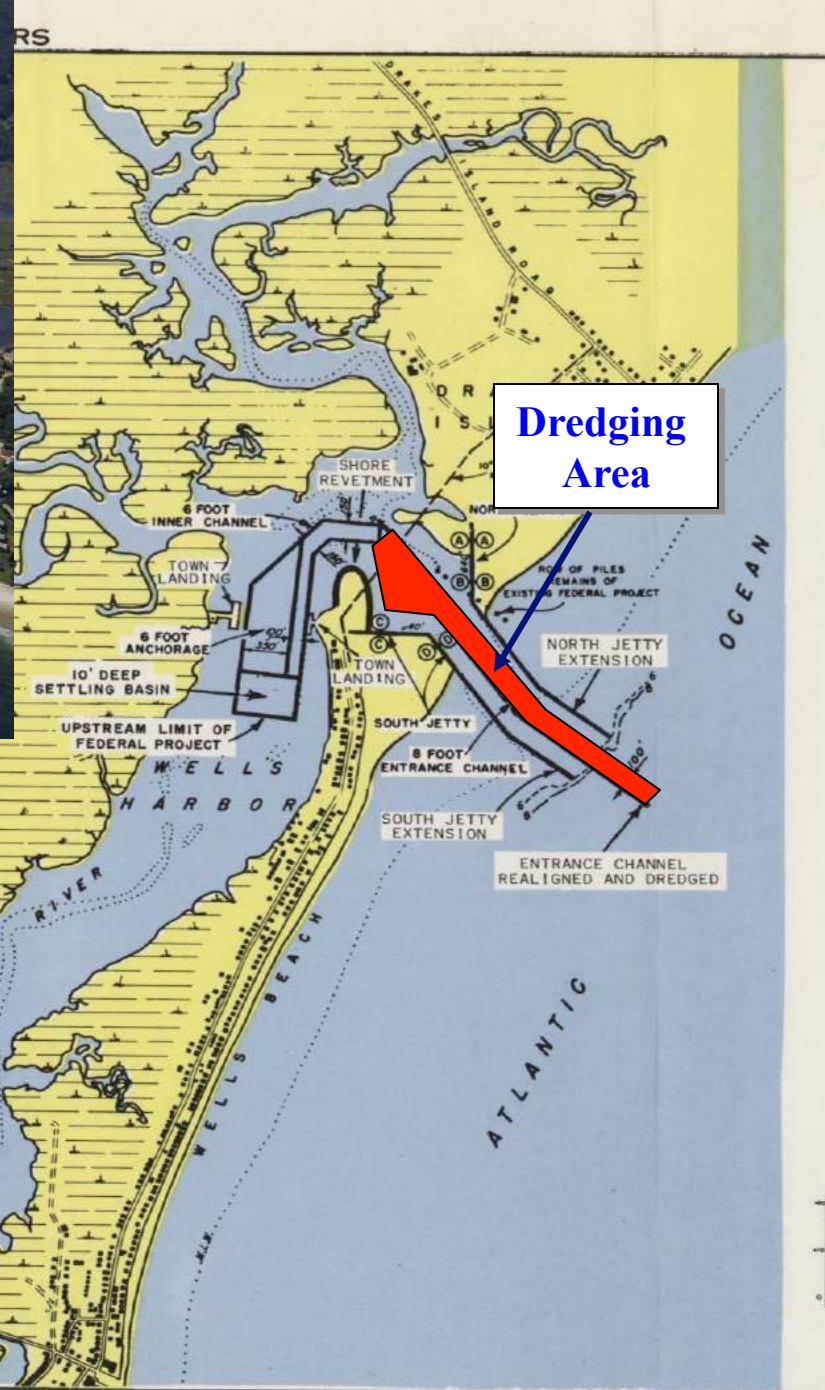
Quantity: 10,000 CY

Material Type: Predominantly Silt

Equipment Type: Hopper

Disposal Site: Nearshore

Haul Distance: 6 miles



Wells Harbor

Project Depth: 8' & 6' Channels &
8' Settling Basin

Last Dredged: Jun 2014

Quantity: 30,000 cy

Material Type: Sand

Equipment Type: Hydraulic

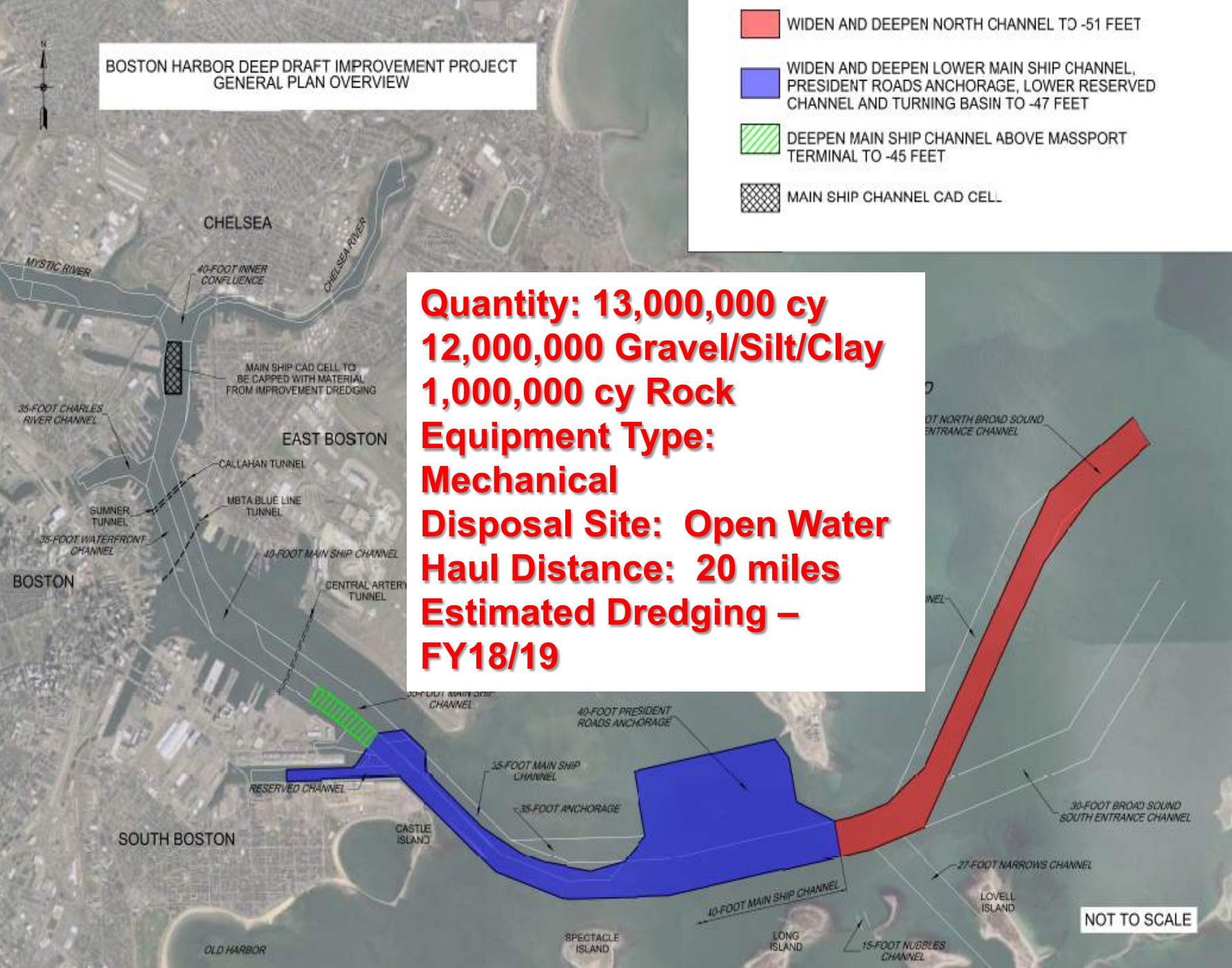
Disposal Site: Nearshore off Wells Beach

Haul Distance: 1 mile

BOSTON HARBOR DEEP DRAFT IMPROVEMENT PROJECT GENERAL PLAN OVERVIEW

- WIDEN AND DEEPEN NORTH CHANNEL TO -51 FEET
- WIDEN AND DEEPEN LOWER MAIN SHIP CHANNEL, PRESIDENT ROADS ANCHORAGE, LOWER RESERVED CHANNEL AND TURNING BASIN TO -47 FEET
- DEEPEN MAIN SHIP CHANNEL ABOVE MASSPORT TERMINAL TO -45 FEET
- MAIN SHIP CHANNEL CAD CELL

Quantity: 13,000,000 cy
12,000,000 Gravel/Silt/Clay
1,000,000 cy Rock
Equipment Type: Mechanical
Disposal Site: Open Water
Haul Distance: 20 miles
Estimated Dredging – FY18/19



DESIGNED BY:	ISSUE DATE:
DRAWN BY:	SCALE:
CHECKED BY:	CONTRACT NO.:
REVISION BY:	DRAWING CODE:
DATE:	DATE:
SCALE:	SCALE:
APPROVED:	APPROVED:

BOSTON HARBOR DEEP DRAFT IMPROVEMENT PROJECT
GENERAL PLAN OVERVIEW

NOT TO SCALE



US Army Corps of Engineers New England District

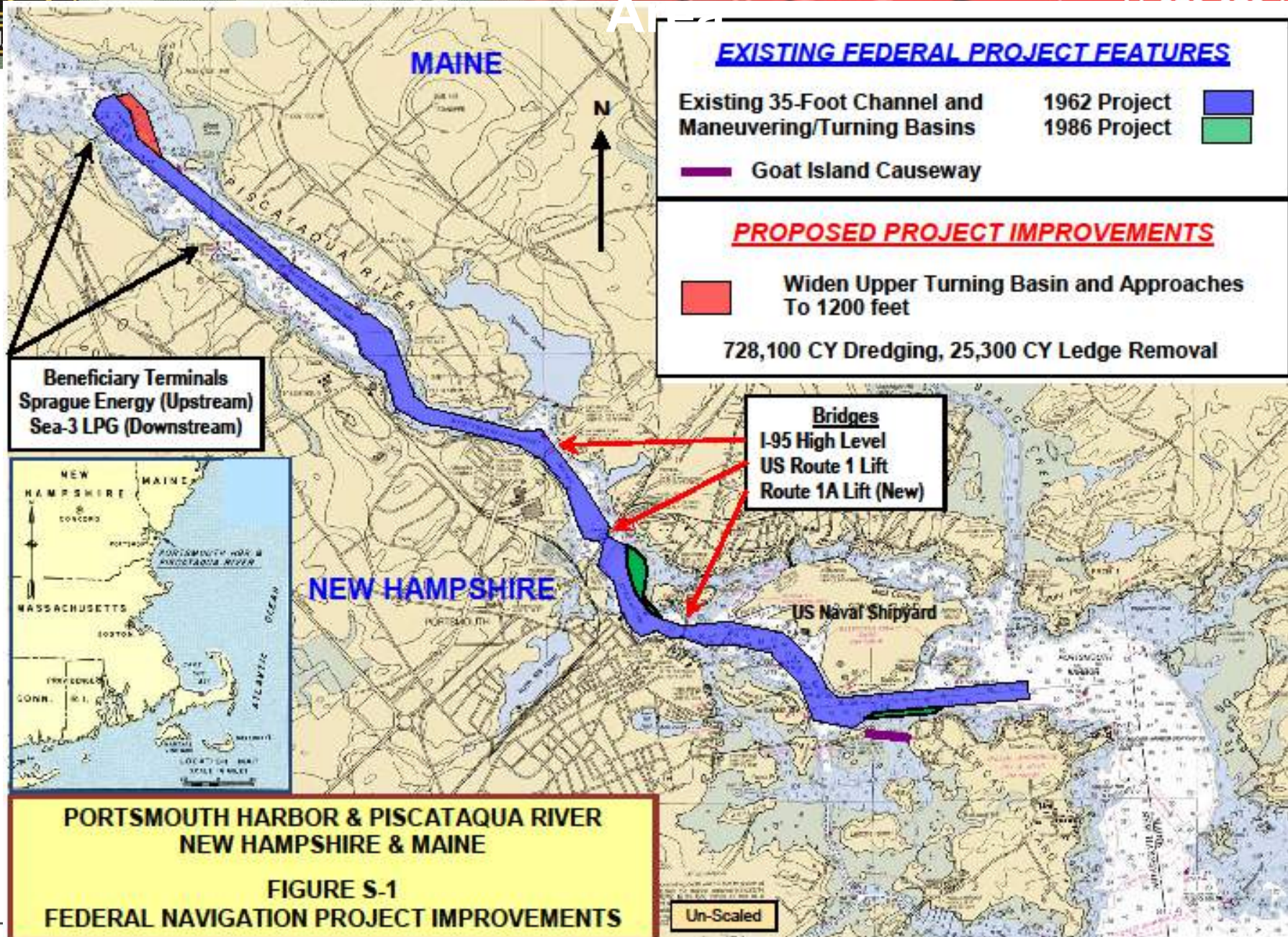


Future Work



Existing Federal Project and Project

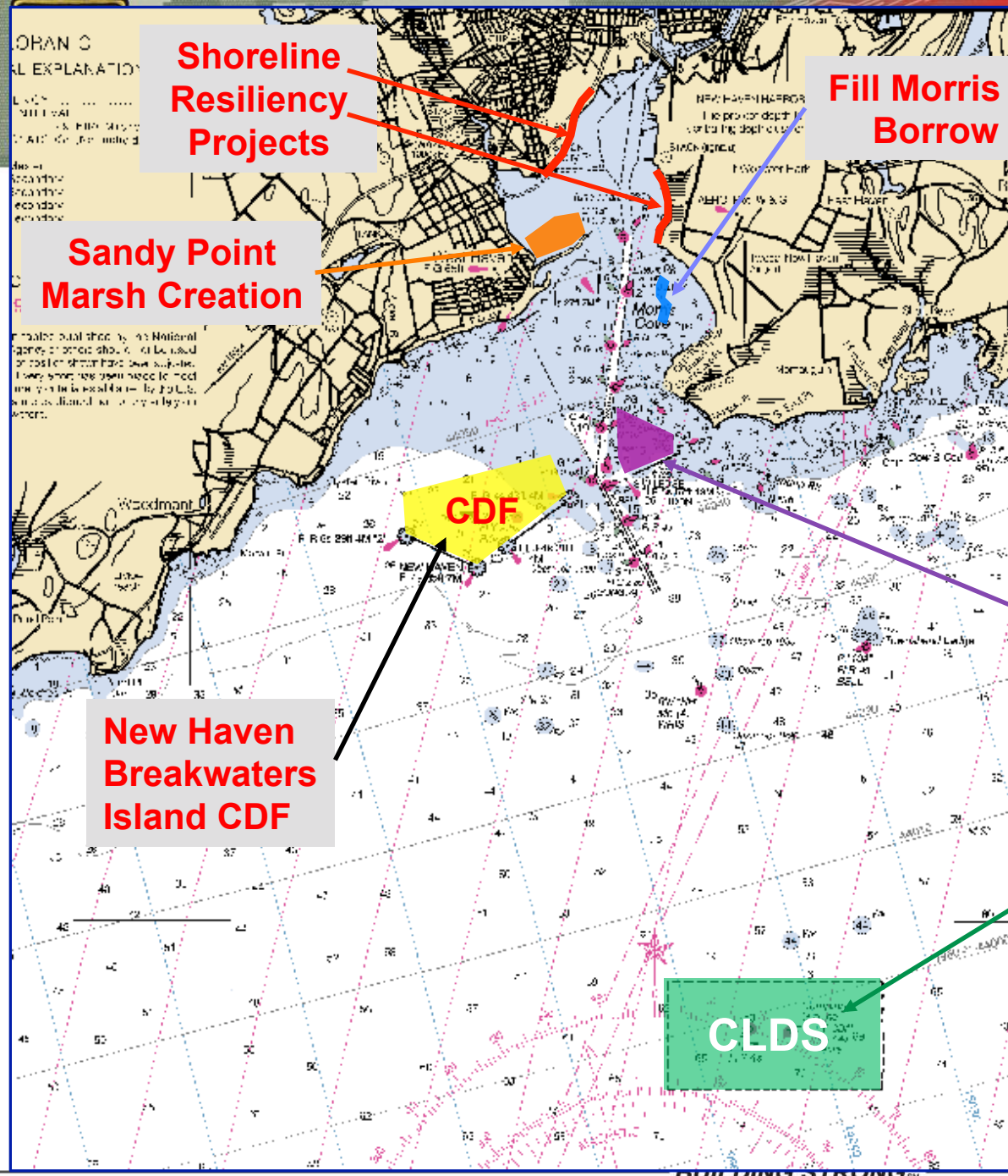
US Army Corps of Engineers



New Haven Harbor, CT Improvement Study



- Deepen the -35-Foot Channel and Turning Basin to -40 Feet for 6.5 Miles
- Widen the 400-Foot Wide Inner Channel to 500 Feet
- Widen the 500-Foot Wide Entrance Channel to 650 feet
- Widen the Channel Bend at the Breakwaters
- Widen the Turning Basin and Shift Upstream
- 40-Foot Alternative would Require Dredging 4,500,000 CY and 55,000 CY of Rock Removal
- Maintenance Dredging of up to 800,000 CY of Shoal Silt may be Concurrent



Shoreline Resiliency Projects

Fill Morris Cove Borrow Pit

Sandy Point Marsh Creation

CDF

East Breakwater Oyster Beds

New Haven Breakwaters Island CDF

Central LIS Disposal Site Historic Mound Restoration

CLDS

New Haven Harbor Improvement Project Potential Placement and Beneficial Use Alternatives

AMERICA'S MOST DOMINANT SPORTS CITY

ESPN

WELCOME TO BOSTON, LOOZAH!

FOUR TEAMS.
SEVEN TITLES.
TEN YEARS.
DO THE MATH.



INSIDE THE BOSTON ISSUE, IS TOM BRADY TOO PRETTY?
THE CELTICS' SURVIVAL PLAN. THEO EPSTEIN'S NOTEBOOKS.
BOSTON SUCKS BY ARTE LANGE. NEW YORK SUCKS BY DENIS LARRY
THIS WHOLE ISSUE IS A BAD IDEA BY BILL SIMMONS.
PLUS: OUR 2001-02 NHL PREVIEW

ESPN.COM

s of Engineers
England District

