

REGIONAL DREDGING ANNUAL MEETING

North Atlantic District (NAD)

Philadelphia District (NAP)

Timothy J. Rooney
Project Manager
Operations Division
Philadelphia District

26 October, 2016
Ft. Lauderdale, FL



Navigation Dredging Projects FY17

Philadelphia District Office

Philadelphia to the Sea
Maintenance, Delaware River;
O&M

Wilmington Harbor, DE; O&M

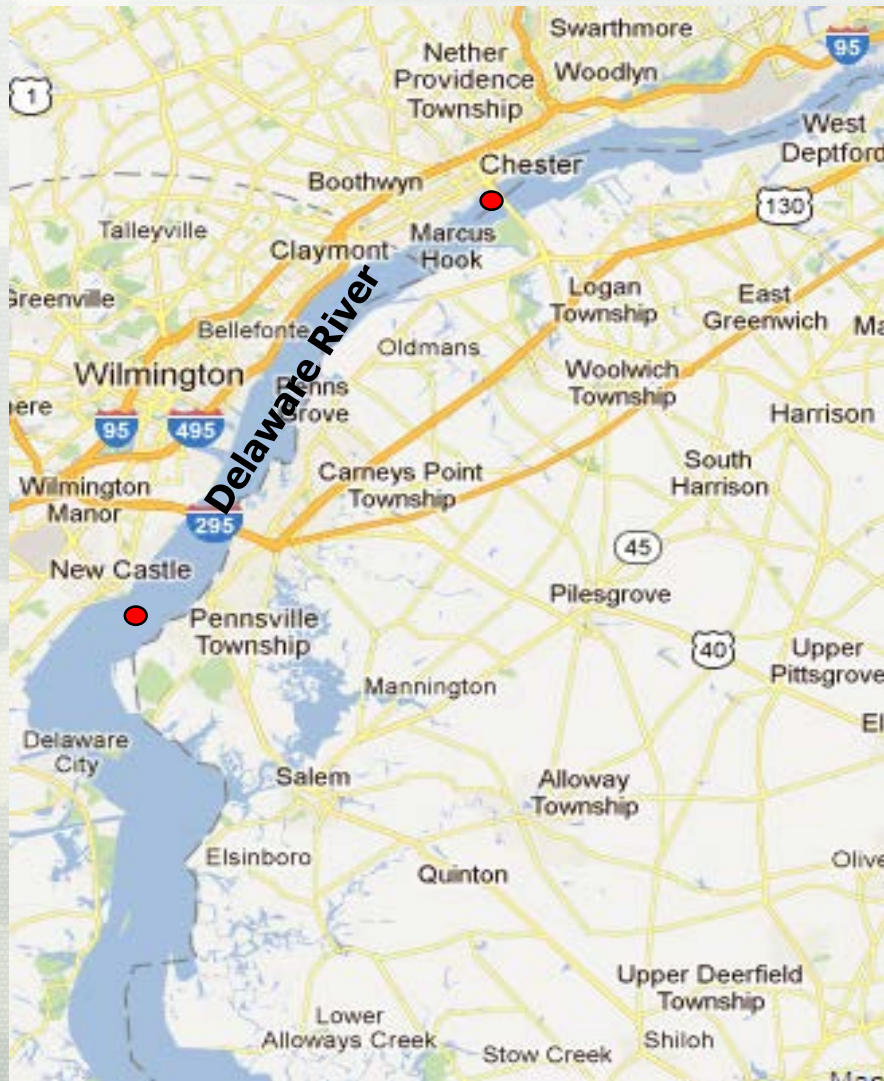
C+D Canal / Chesapeake
Bay, MD; O&M

New Jersey Intracoastal
Waterway; O&M

Philadelphia to Trenton,
Delaware River; O&M



Philadelphia to the Sea (Maintenance)

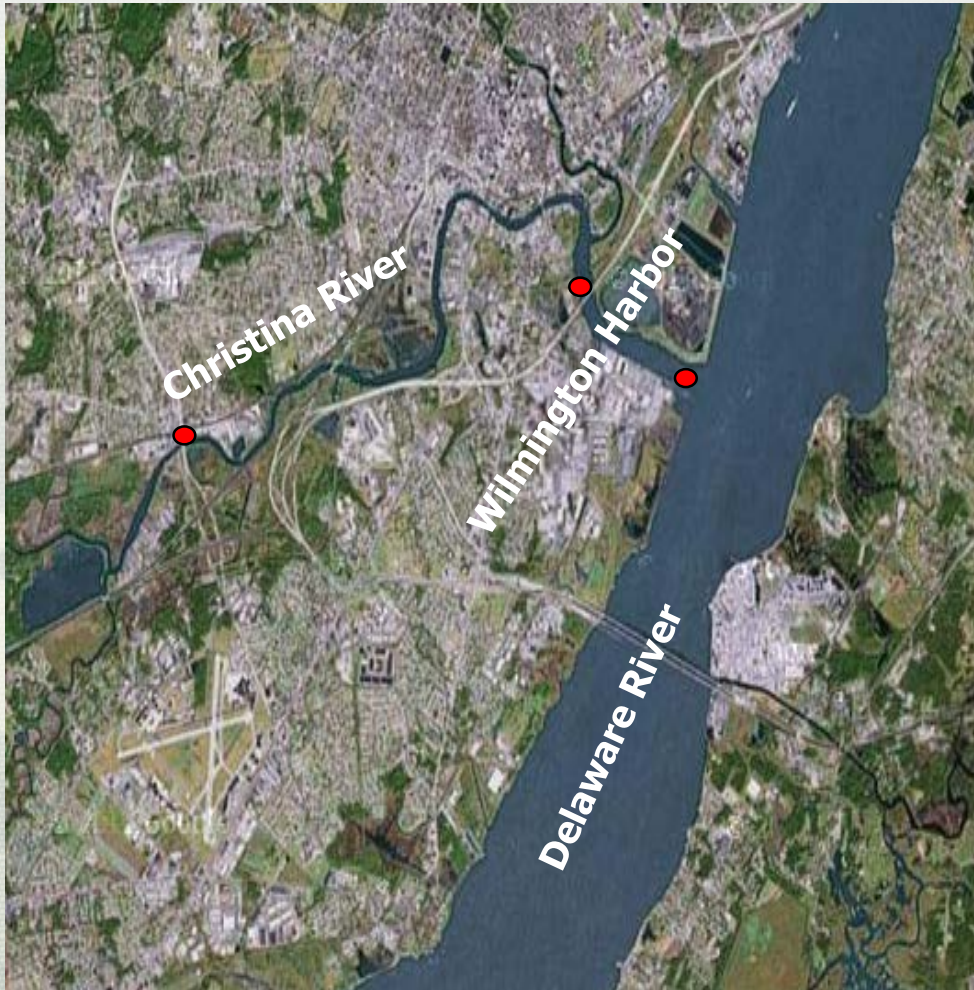


Location: Delaware River
Dredge Type: Hydraulic
Placement: Killcohook / Pedricktown
Quantity: 3,000,000 cy.
Depth: 42-44' + 1' allowable overdepth
Bus. Type: Unrestricted
Advertise: 29 Sept 2016
Open Bids: 02 Nov 2016
Award: 30 Nov 2016
Issue NTP: 05 Dec 2016
Commence Dredging: December 2016
Dredge Complete: March 2017

Contract 16-B-0012 is for maintenance dredging of the Delaware River to 42' to 44' (advanced maintenance). The disposal areas available are Killcohook and Pedricktown.



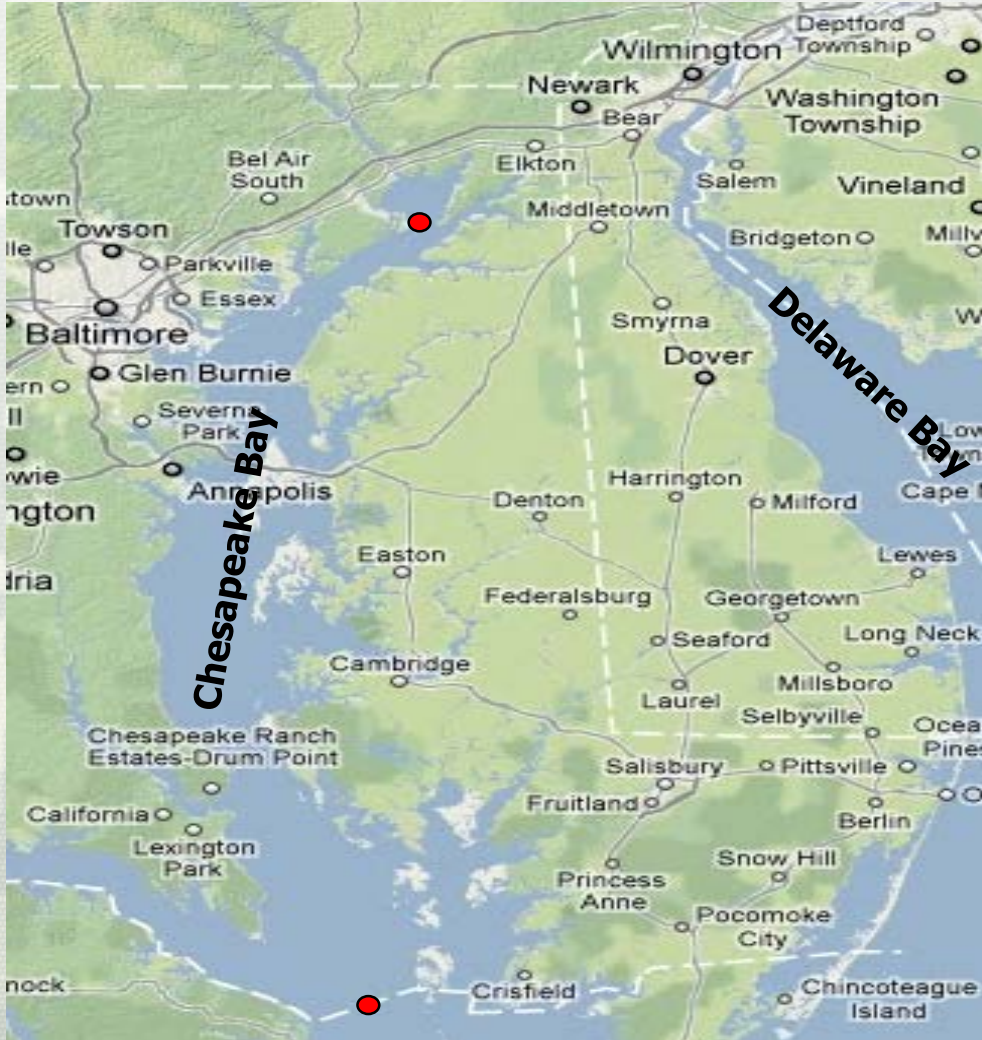
Wilmington Harbor, DE



Location: Wilmington Harbor, DE
Dredge Type: Hydraulic
Placement: Wilmington North
Quantity: 500,000 cy.
Depth: 38' + 1' allowable overdepth
Bus. Type: Unrestricted
Issue RFP: 15 April 2017
Receive RFP: 16 May 2017
Award: 17 June 2017
NTP: 1 July 2017
Commence Dredging: 1 July 2017
Dredging Complete: 1 August 2017



C+D Canal / Chesapeake Bay, MD



Location: C+D Canal Chesapeake Bay

Dredge: Hydraulic / Bucket

Placement: TBD

Quantity: 600,000 cy.

Depth: 37'+ 1' allowable overdepth

Bus. Type: Unrestricted

Advertise: 25 July 2017

Bid Opening: 29 August 2017

Award: 15 September 2017

NTP: 03 October 2017

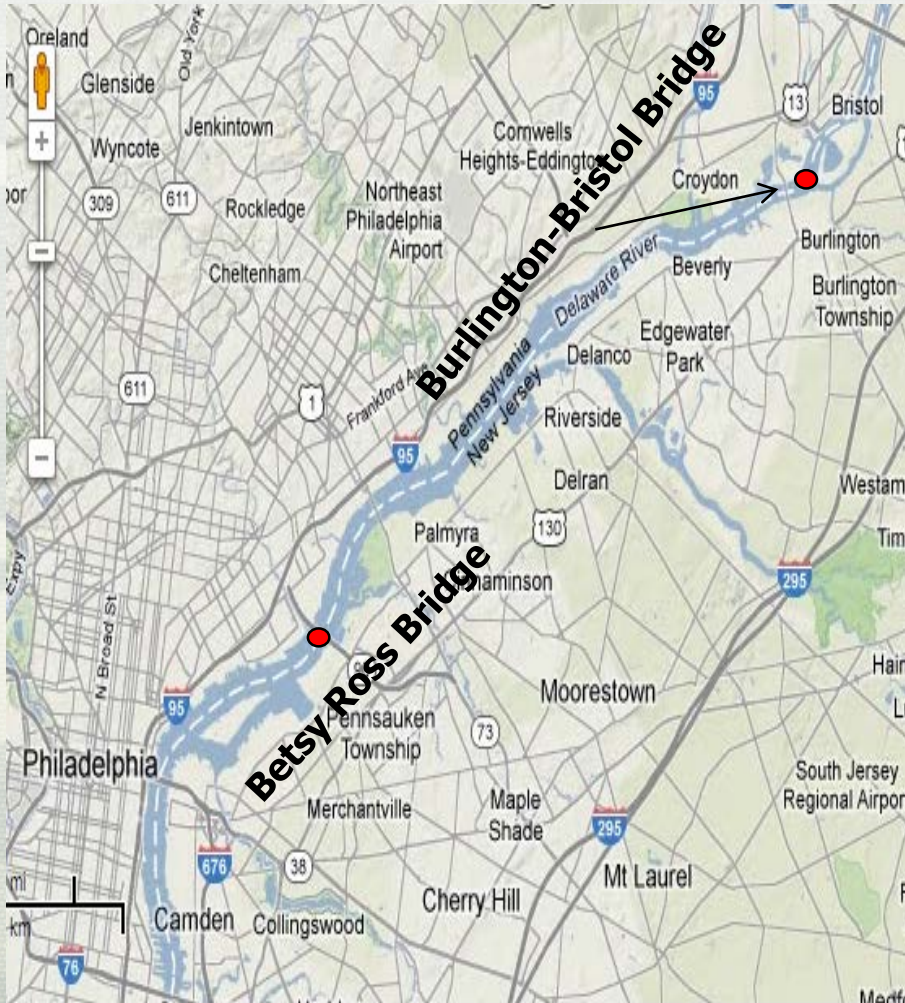
Commence Dredging: October 2017

Complete: January 2018

Contract consists of dredging the Delaware River to Chesapeake Bay to 38'. The estimated quantity available is 600,000 cy with the disposal area TBD.



Philadelphia to Trenton, Delaware River



Location: Delaware River

Dredge Type: TBD

Placement: CDF

Quantity: 850,000

Depth: 41' + 1' allowable overdepth

Bus. Type: Cutterhead Dredge Pipeline

Issue RFP: 15 May 2017

Receive RFP: 15 June 2017

Award: 15 July 2017

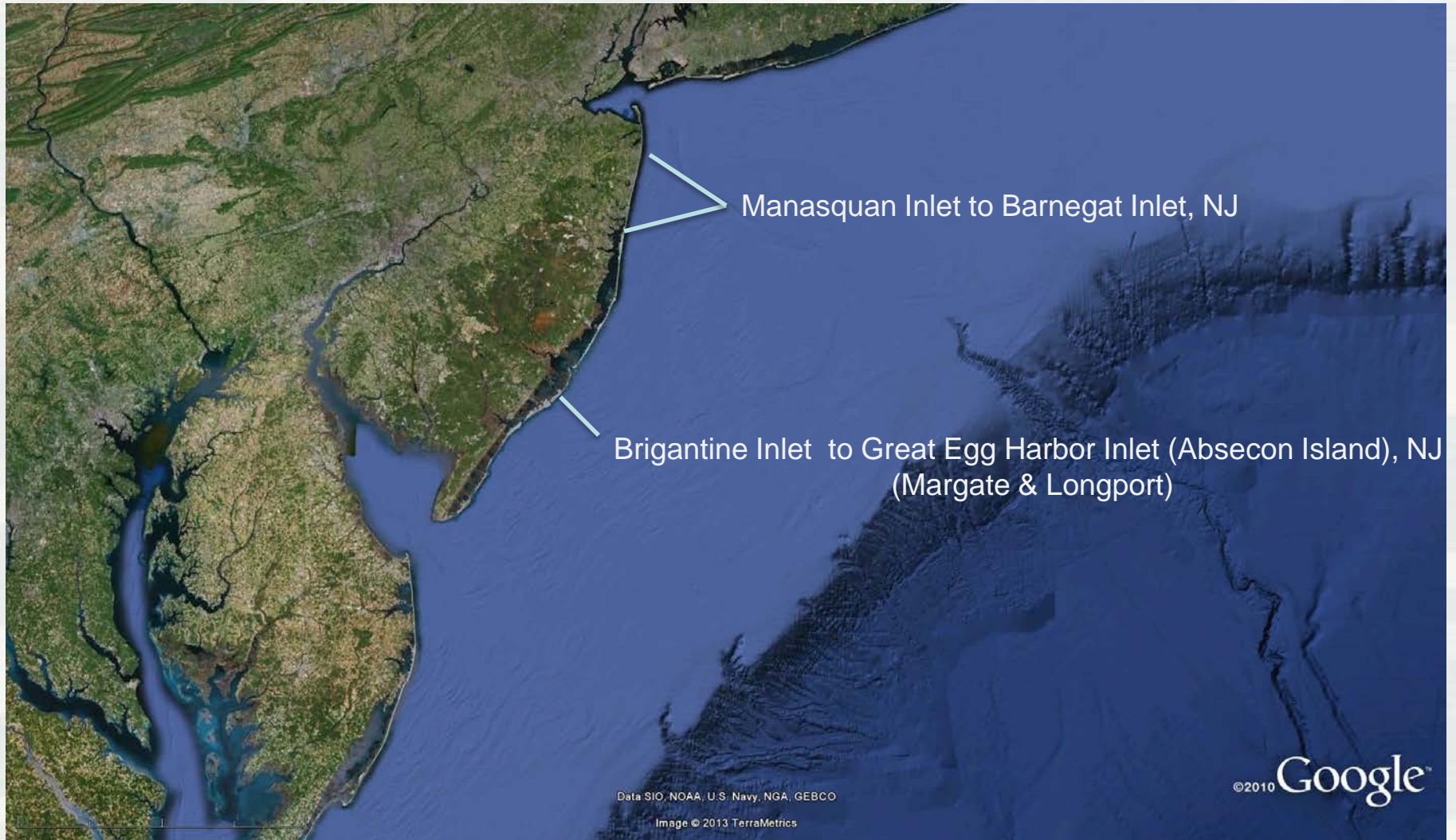
Issue NTP: 15 August 2017

Commence Dredging: August 2017

Dredge Complete: November 2017



Sandy ABU Projects in Philadelphia District



Manasquan Inlet to Barnegat Inlet, NJ



Hurricane Sandy
Authorized But Unconstructed (ABU)

Scope of Work	Coastal Storm Damage Reduction
Quantity:	10,800,000
Material Type:	Sand
Placement Areas:	All municipalities between Manasquan Inlet and Island Beach State Park: 14 miles
Borrow Area:	Various Offshore Areas
Type of Equipment:	Hopper and/or Hydraulic Cutterhead
Environmental Windows:	None
Sch. Advertisement Date:	26 Sept 2016
Sch. Bid Opening Date:	15 Nov 2016
Sch. Start Date: (NTP)	December 2016
Issues:	Contract will be base plus options due to real estate acquisition

Delaware River Main Channel Deepening, NJ, DE & PA



Construction General
 Deep Draft Navigation – Initial Construction (Upper Reach B)

Scope of Work	Deep Draft Navigation
Quantity:	3,700,000 CY
Material Type:	Sand/Silt
Placement Areas:	Oldmans
Borrow Area:	N/A
Type of Equipment:	Cutterhead Pipeline
Environmental Windows:	1 Dec to 15 Mar
Sch. Advertisement Date:	Feb 2017
Sch. Bid Opening Date:	March 2017
Sch. Start Date: (NTP)	July 2017
Issues:	



Any Questions?

