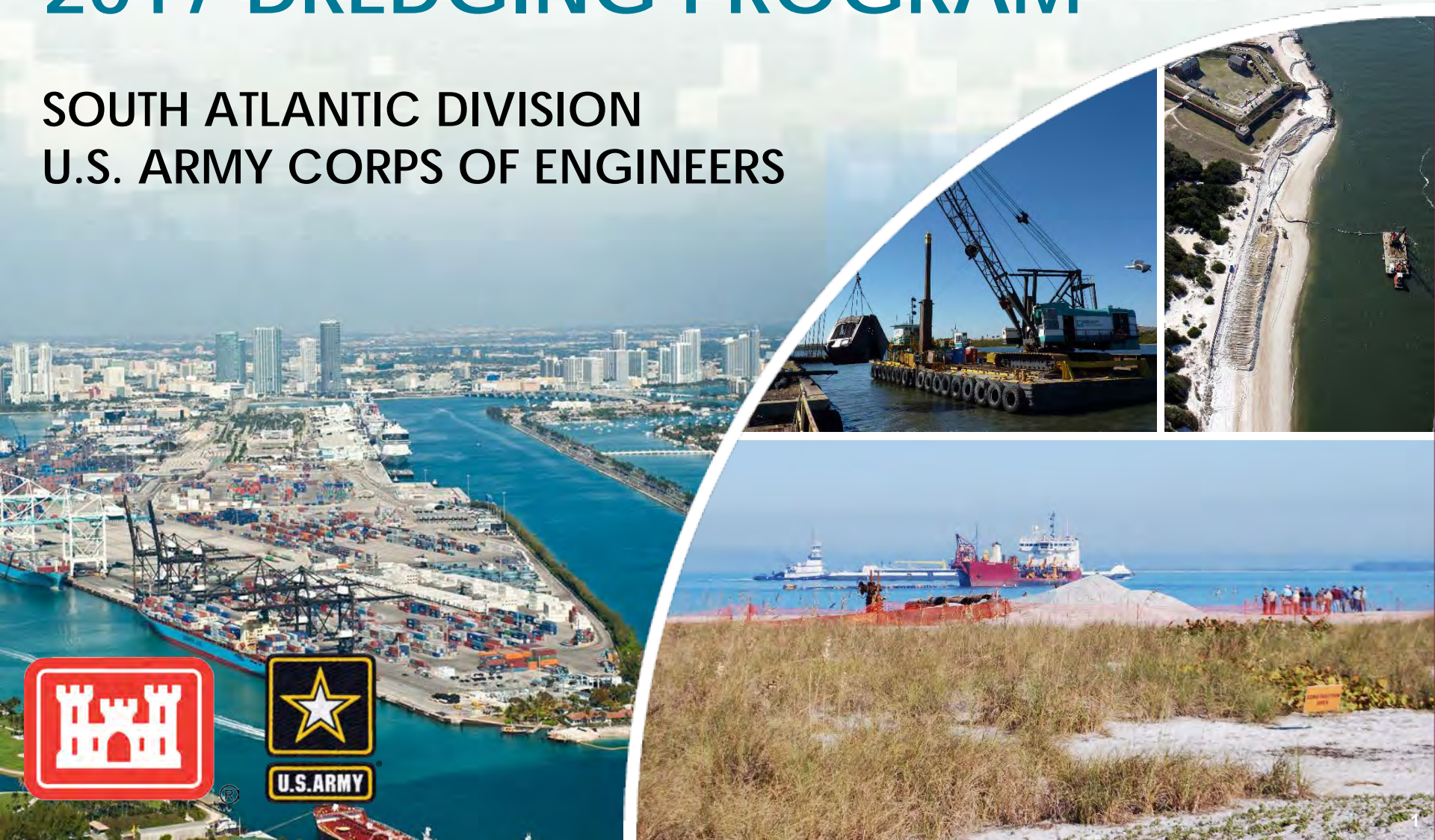


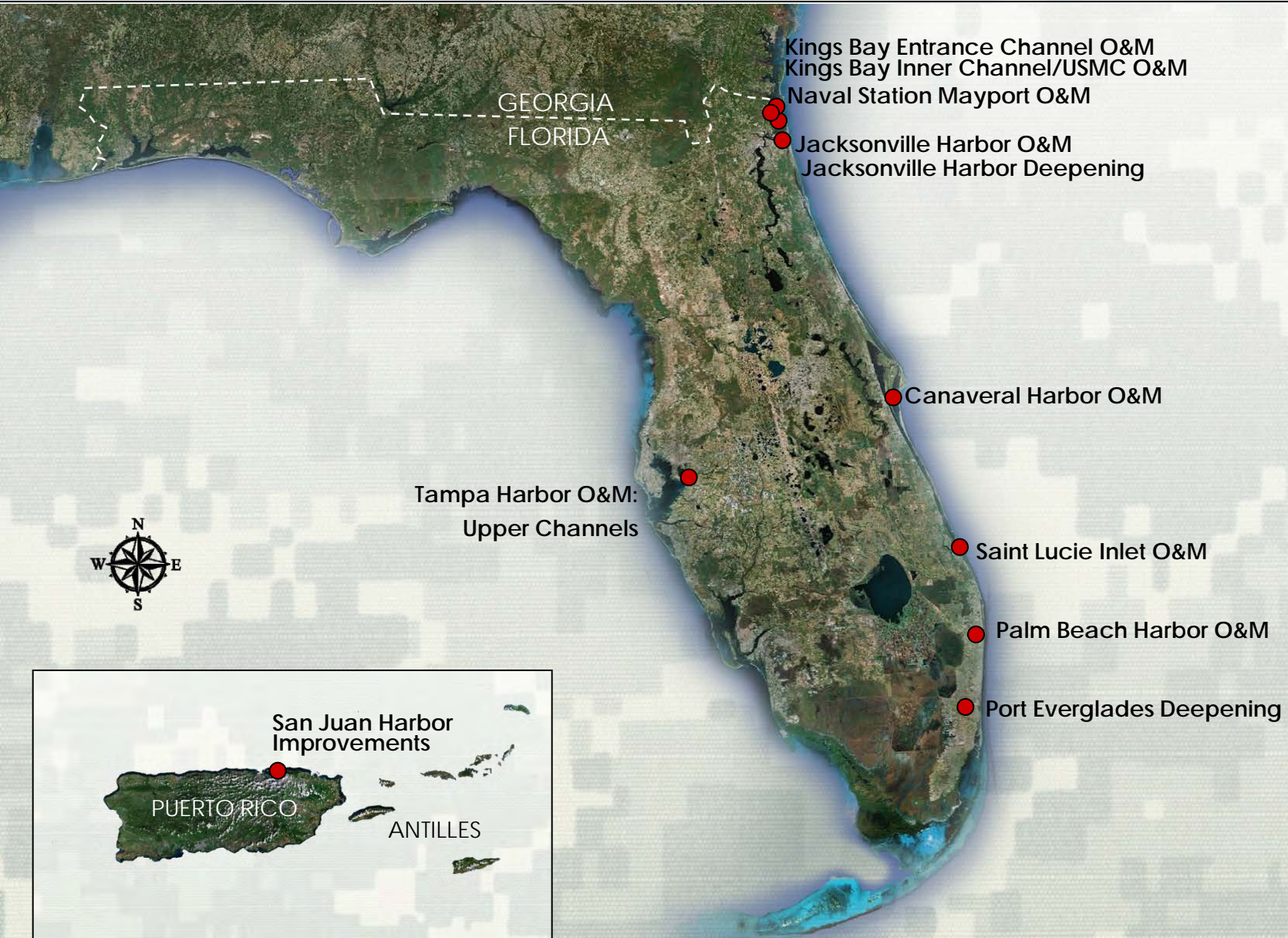
JACKSONVILLE DISTRICT

2017 DREDGING PROGRAM

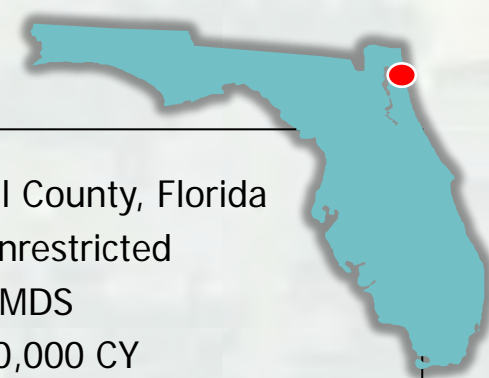
SOUTH ATLANTIC DIVISION
U.S. ARMY CORPS OF ENGINEERS



FY 17 SAJ DREDGING PROGRAM



NAVAL STATION MAYPORT O&M



LOCATION: Duval County, Florida

DREDGE TYPE: Unrestricted

PLACEMENT: ODMDS

QUANTITY: 1,400,000 CY

DEPTH: 42 - 50 feet

BUSINESS TYPE: MATOC Group 4 (Misc.)

ADVERTISE: September 2016

BID OPENING: October 2016

AWARD: November 2016

ISSUE NTP: November 2016

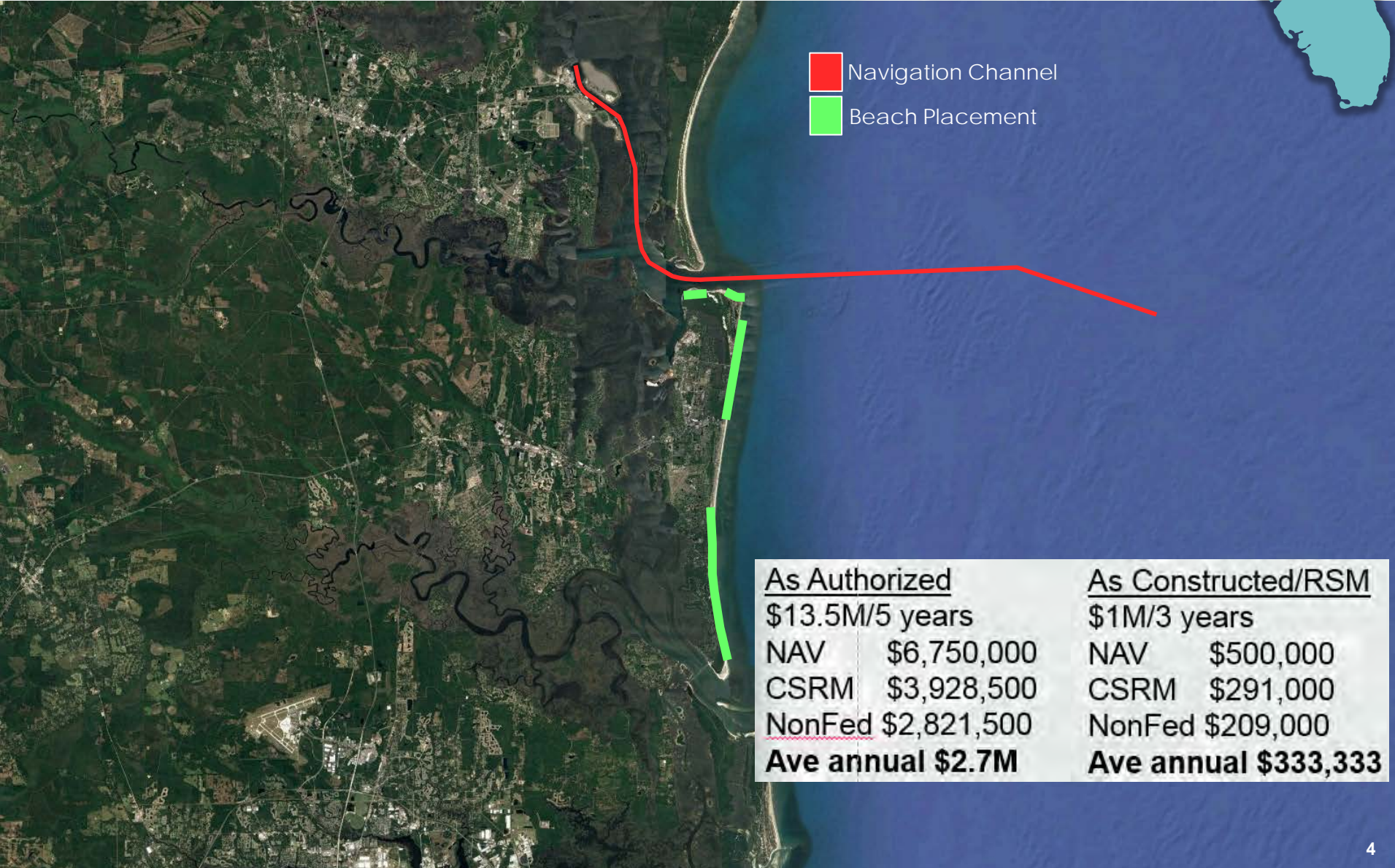
COMMENCE DREDGING: December 2016

DREDGE COMPLETE: July 2017



RSM PLAN FOR NORTH FLORIDA

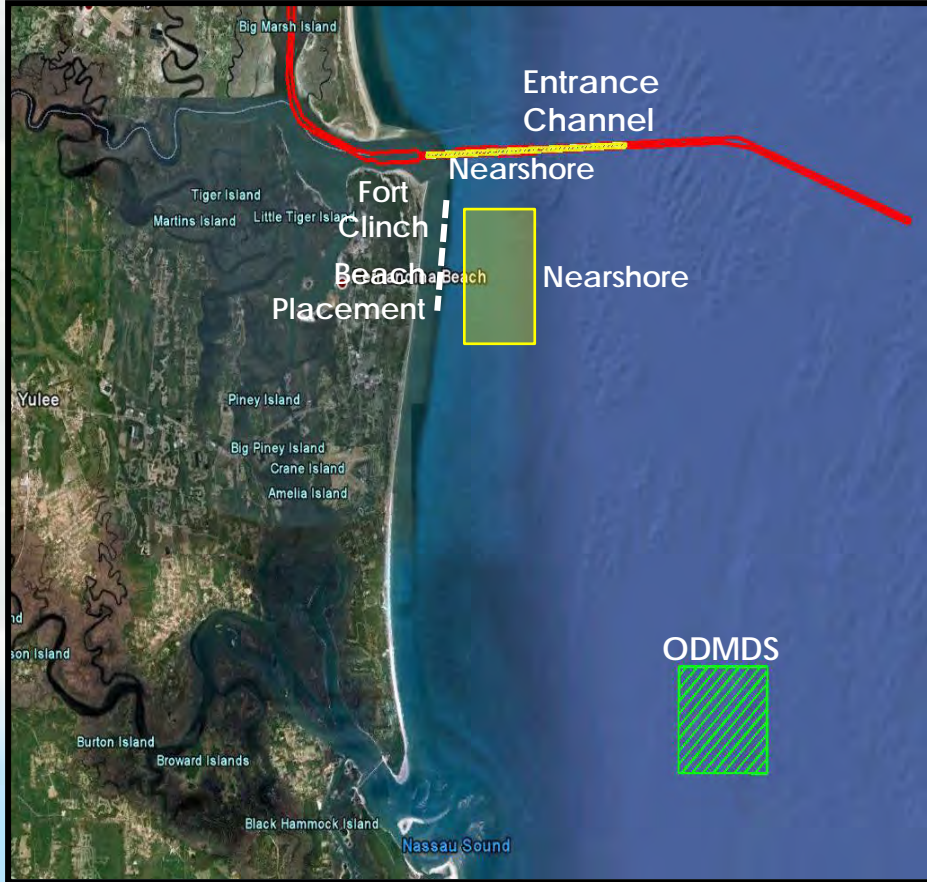
KINGS BAY, NASSAU, USMC BLOUNT ISLAND



■ Navigation Channel
■ Beach Placement

<u>As Authorized</u>		<u>As Constructed/RSM</u>	
\$13.5M/5 years		\$1M/3 years	
NAV	\$6,750,000	NAV	\$500,000
CSRM	\$3,928,500	CSRM	\$291,000
NonFed	\$2,821,500	NonFed	\$209,000
Ave annual \$2.7M		Ave annual \$333,333	

KINGS BAY ENTRANCE CHANNEL O&M



LOCATION: Nassau County, Florida

DREDGE TYPE: Hopper

PLACEMENT: Mixed w/Nassau SPP Placement

QUANTITY: 1,530,000 CY

DEPTH: 46 feet

BUSINESS TYPE: IFB

ADVERTISE: October 2016

BID OPENING: November 2016

AWARD: December 2016

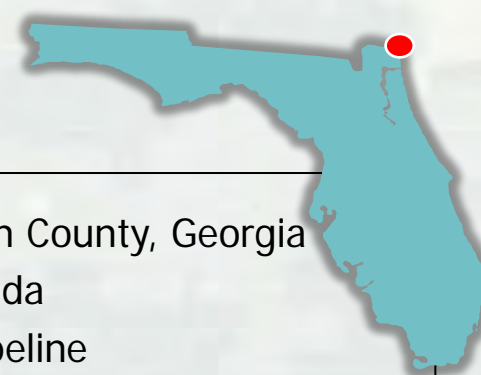
ISSUE NTP: December 2016

COMMENCE DREDGING: January 2016

DREDGE COMPLETE: March 2016



KINGS BAY INNER CHANNEL USMC TERMINAL O&M



LOCATION: Camden County, Georgia
& Duval County, Florida

DREDGE TYPE: Pipeline

PLACEMENT: Upland

QUANTITY: 1,100,000 CY

DEPTH: 44 – 46 feet / 38 feet

BUSINESS TYPE: IFB (Small Bus.)

ADVERTISE: December 2016

BID OPENING: January 2017

AWARD: February 2017

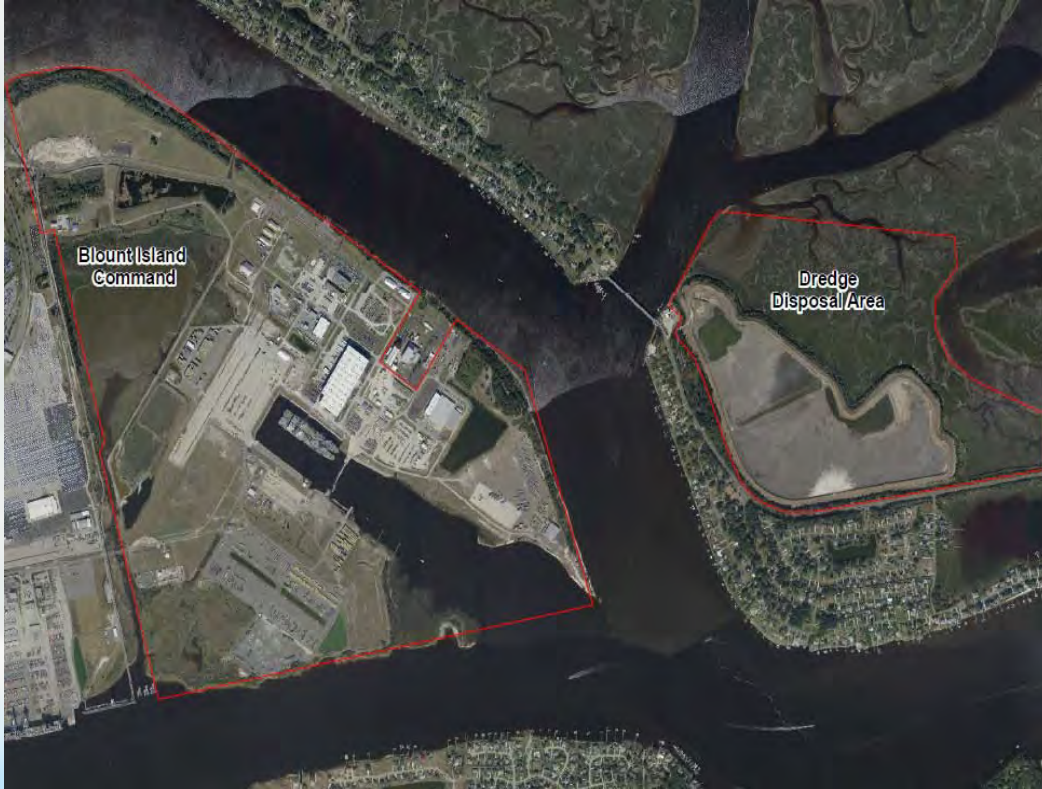
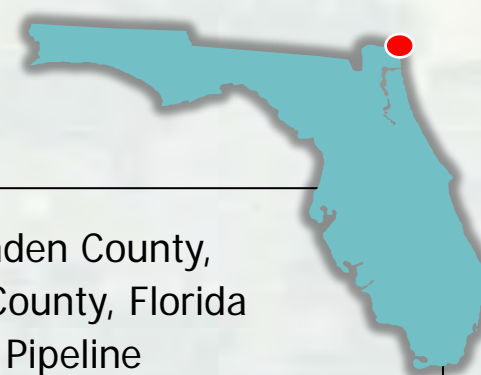
ISSUE NTP: March 2017

COMMENCE DREDGING: March 2017

DREDGE COMPLETE: October 2017



USMC BLOUNT ISLAND



LOCATION: Camden County, Georgia & Duval County, Florida

DREDGE TYPE: Pipeline

PLACEMENT: Upland

QUANTITY: 120,000 CY

DEPTH: 44 – 46 feet / 38 feet

BUSINESS TYPE: IFB (Small Bus.)

ADVERTISE: December 2016

BID OPENING: January 2017

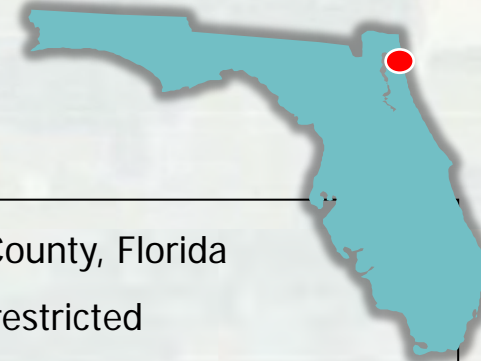
AWARD: February 2017

ISSUE NTP: March 2017

COMMENCE DREDGING: March 2017

DREDGE COMPLETE: October 2017





JACKSONVILLE HARBOR O&M



LOCATION: Duval County, Florida
DREDGE TYPE: Unrestricted
PLACEMENT: Upland
QUANTITY: 300,000 CY
DEPTH: 40 feet
BUSINESS TYPE: MATOC Group 4 (Misc.)
ADVERTISE: December 2016
BID OPENING: January 2017
AWARD: February 2017
ISSUE NTP: March 2017
COMMENCE DREDGING: March 2017
DREDGE COMPLETE: June 2017



ST. LUCIE INLET O&M

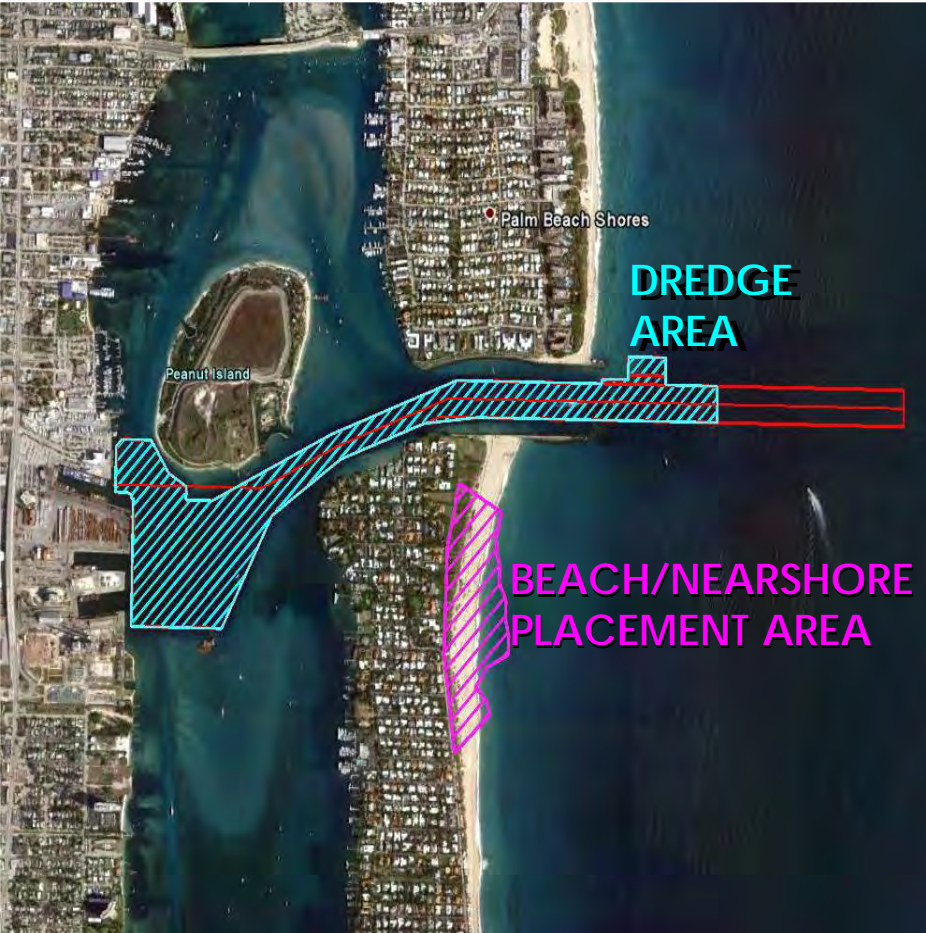
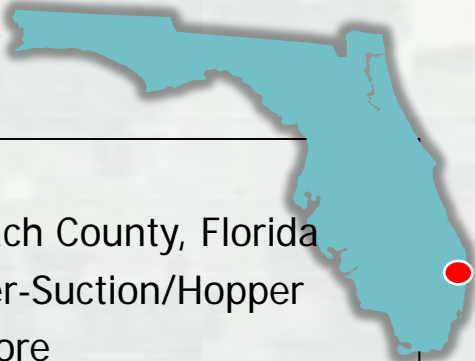


LOCATION: Martin County, Florida
DREDGE TYPE: Unrestricted
PLACEMENT: Nearshore
QUANTITY: 400,000 CY
DEPTH: 16 feet (13 feet in impoundment basin)

BUSINESS TYPE: IFB
ADVERTISE: June 2017
BID OPENING: July 2017
AWARD: August 2017
COMMENCE DREDGING: September 2017
DREDGE COMPLETE: April 2018



PALM BEACH HARBOR O&M



LOCATION: Palm Beach County, Florida
DREDGE TYPE: Cutter-Suction/Hopper
PLACEMENT: Nearshore
QUANTITY: 250,000 CY
DEPTH: 37 - 39 feet +2 feet allowable overdepth; settling basins

BUSINESS TYPE: MATOC Group 4 (Misc.)
ADVERTISE: June 2017
BID OPENING: July 2017
AWARD: August 2017
ISSUE NTP: September 2017
COMMENCE DREDGING: October 2017
DREDGE COMPLETE: March 2018



TAMPA HARBOR UPPER CHANNELS O&M



LOCATION: Hillsborough County, Florida

DREDGE TYPE: Unrestricted

PLACEMENT: Upland

QUANTITY: 400,000 CY

DEPTH: 34 - 43 feet

BUSINESS TYPE: IFB

ADVERTISE: June 2017

BID OPENING: July 2017

AWARD: August 2017

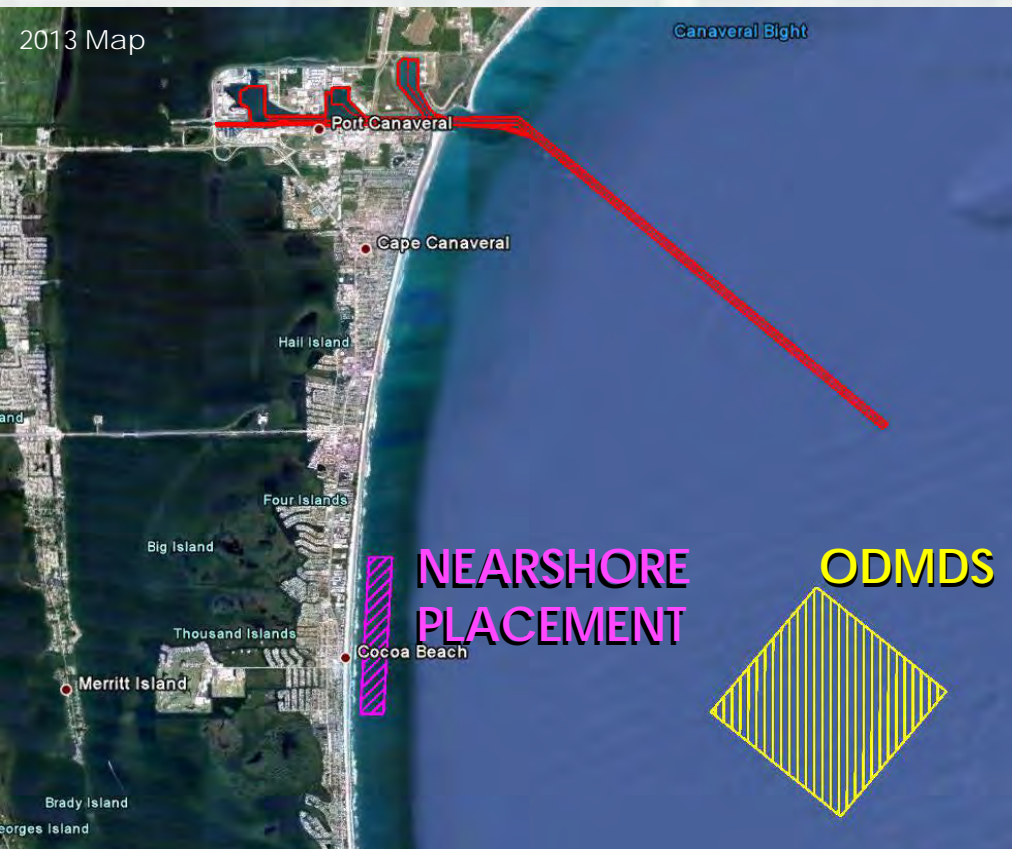
ISSUE NTP: September 2017

COMMENCE DREDGING: October 2017

DREDGE COMPLETE: March 2018



CANAVERAL HARBOR O&M



LOCATION: Brevard County, Florida

DREDGE TYPE: Mechanical

PLACEMENT: ODMDS

QUANTITY: 500,000 CY

DEPTH: 39 - 44 feet

BUSINESS TYPE: MATOC Group 4 (Misc.)

ADVERTISE: July 2017

BID OPENING: Aug 2017

AWARD: Sept 2017

ISSUE NTP: Oct 2017

COMMENCE DREDGING: Nov 2017

DREDGE COMPLETE: March 2018



NAVIGATION IMPACTS

HURRICANE MATTHEW



- Fernandina Harbor
- Jacksonville Harbor
- Multiple Portions of the IWW Jacksonville to Miami
- St. Augustine Inlet
- Ponce Inlet
- Canaveral Harbor
- Ft. Pierce Harbor
- St. Lucie Inlet
- OWW – Cross Roads
- Palm Beach Harbor
- Bakers Haulover Inlet



SHORELINE IMPACTS

HURRICANES



Project Information Reports To Date*

Gulf Coast (Hermine)

- Pinellas County, Sand Key

East Coast (Matthew)

- Nassau County
- Duval County
- St John's County
- Brevard County North Reach
- Brevard County South Reach
- Fort Pierce
- Dade County, Sunny Isles
- Dade County, Main Segment

*Additional PIR requests anticipated

Extensive damage at pending Federal projects: Flagler County (pictured) pending WRDA authorization and St. Johns County, Vilano and South Ponte Vedra in feasibility phase