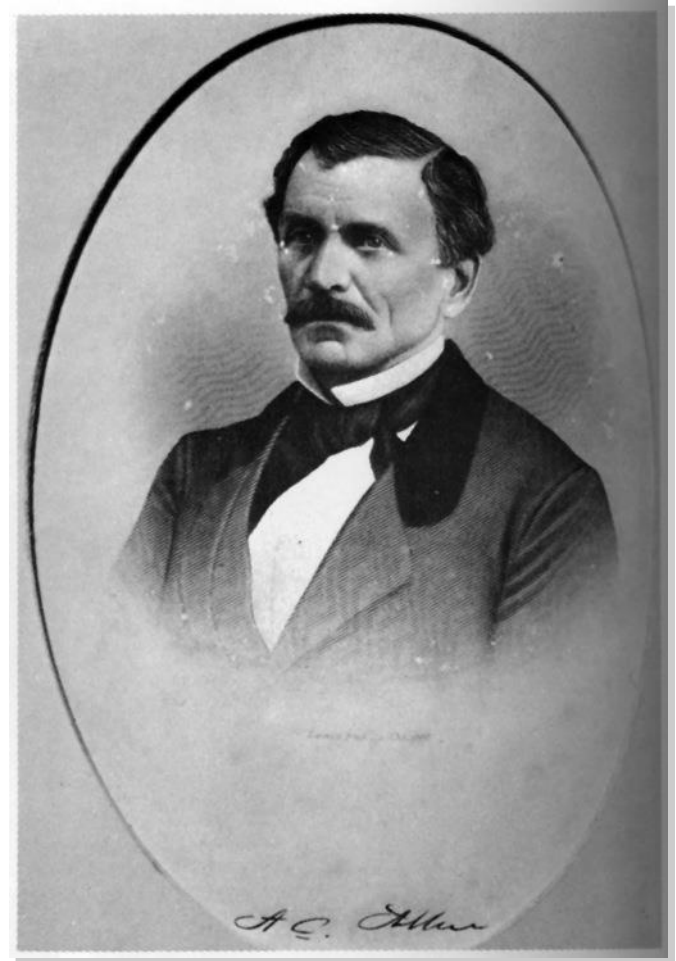




# Western Dredging Association

*Charlie Jenkins*  
*Senior Director*

# The Allen Brothers

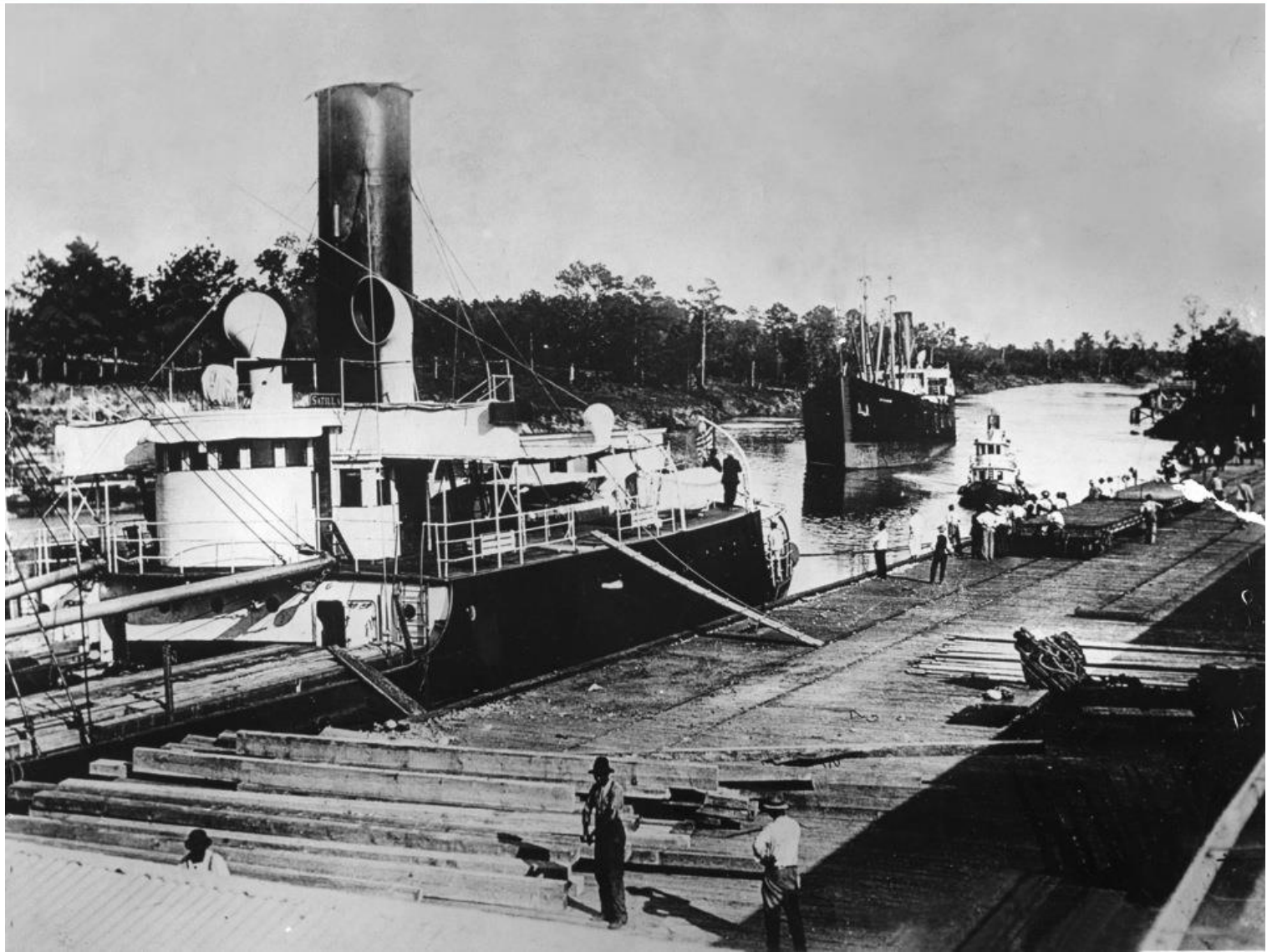


PORT of HOUSTON AUTHORITY

# Buffalo Bayou



PORT *of* HOUSTON AUTHORITY

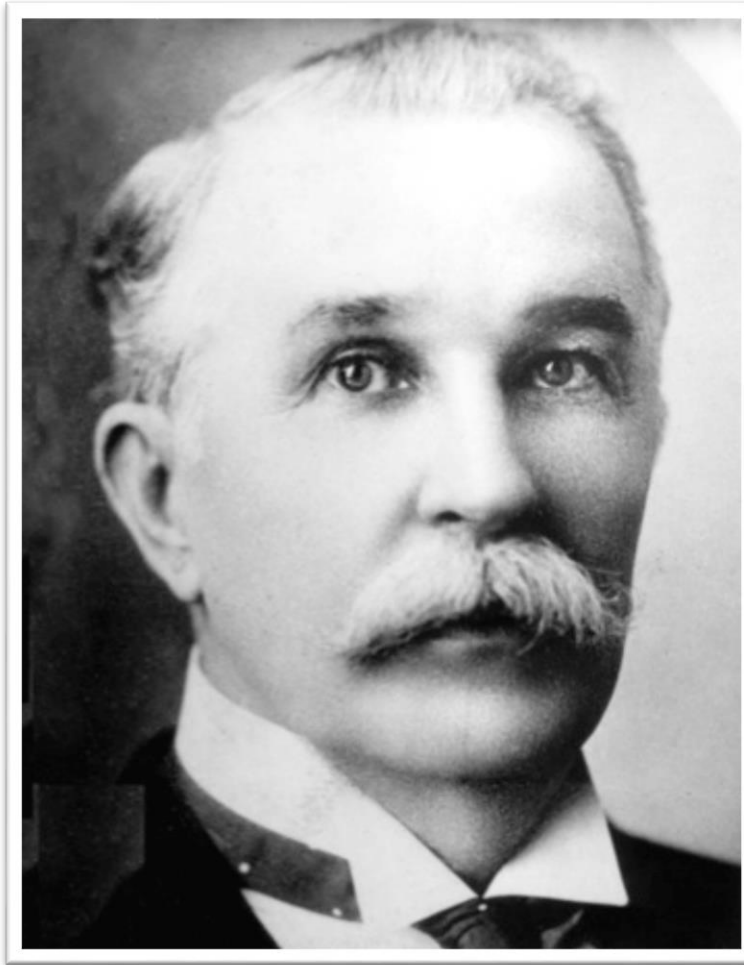


PORT *of* HOUSTON AUTHORITY



PORT of HOUSTON AUTHORITY

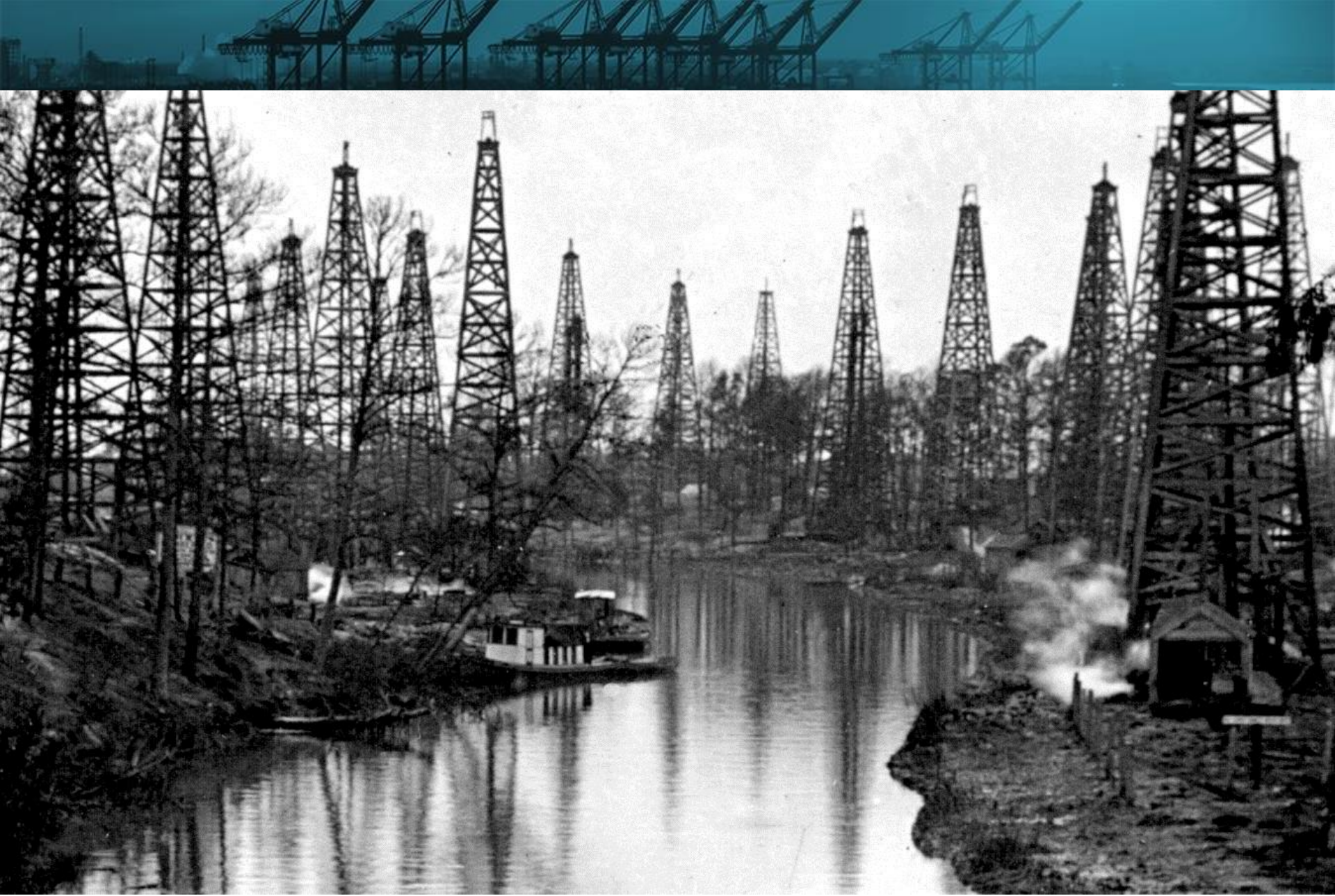
# Tom Ball



PORT *of* HOUSTON AUTHORITY



PORT *of* HOUSTON AUTHORITY



PORT *of* HOUSTON AUTHORITY





PORT *of* HOUSTON AUTHORITY



80-A<sup>47</sup>. Opening of the Panama Canal, S.S. Ancon passing Cucaracha slide. Looking north. Aug. 15, 1914

# Port of Houston



PORT *of* HOUSTON AUTHORITY

# Port of Houston National Rankings

- # 1 U.S. port by foreign waterborne tonnage – 163M tons
- # 1 U.S. port in petroleum, steel and project cargo
- # 6 ranked U.S. container port by total TEUs



## TEXAS ECONOMIC IMPACTS

- **\$178.5 billion**  
in economic impact
- **\$4.5 billion**  
in state and local taxes

## JOB IMPACT

- **1,026,820**  
Total Related Jobs





PORT *of* HOUSTON AUTHORITY

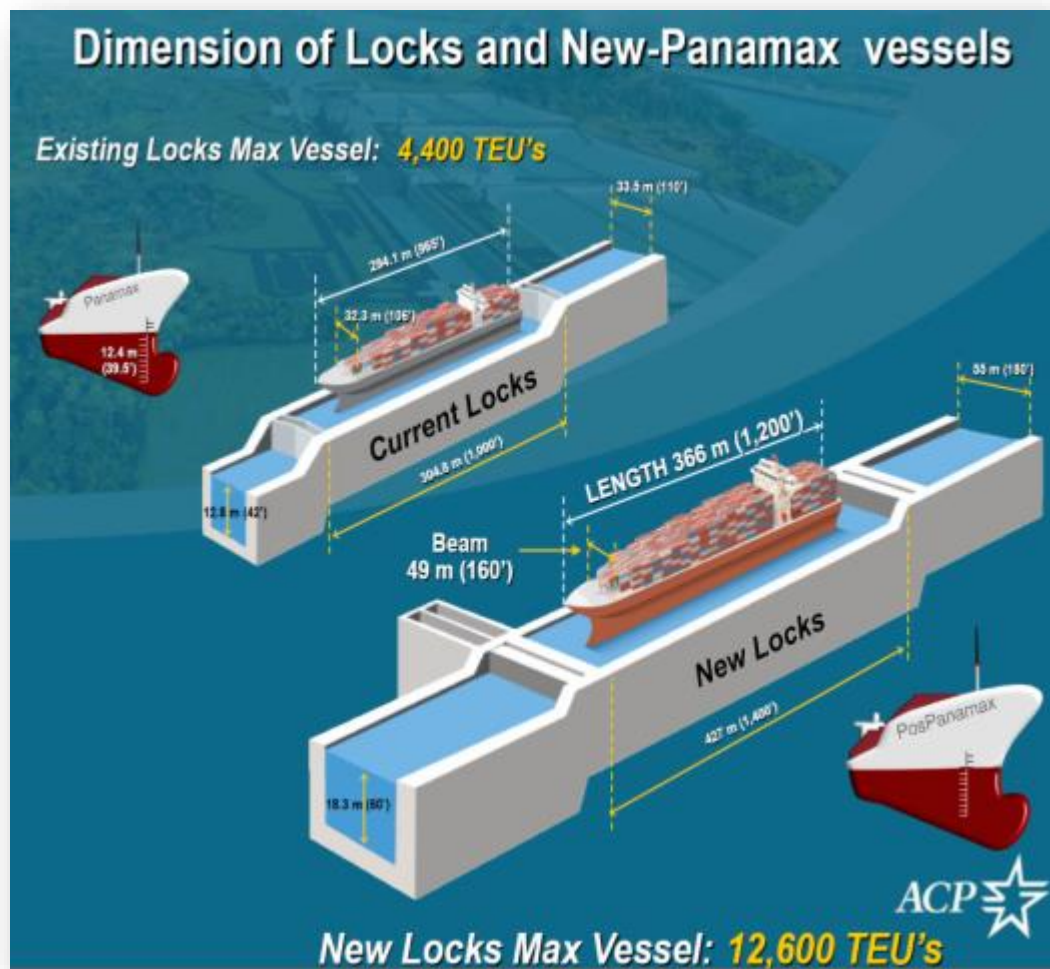




PORT *of* HOUSTON AUTHORITY



# Panama Canal Expansion



# Channel Improvement Projects



PORT *of* HOUSTON AUTHORITY

# Barbours Cut Terminal (BCT) Redevelopment



## Barbours Cut Terminal Capital Investment 2015 – 2019

- 8 SPP Wharf Cranes – \$102 Million
- 3 Wharves Rehab – \$107 Million
- Electrical Transmission/Dist. – \$21 Million
- 8 RTGs – \$15 Million
- Yard Reconstruction = \$120 Million

**10-year Capital Investment – \$700 Million**

# Bayport Terminal (BPT) Expansion

## Bayport Terminal Expansion Capital Investment 2015 – 2019

- 6 SPP Wharf Cranes – \$73 Million
- Wharves 2 & 6 – \$138 Million
- CY 6, 7, and Empty Yard – \$107 Million
- 15 RTGs – \$29 Million

**Next 10-year Completion – \$1 Billion**



# General Cargo Facility Investments

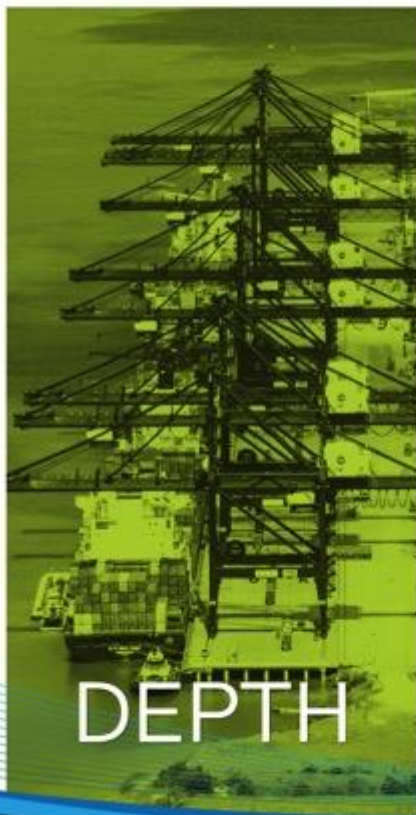




PORT *of* HOUSTON AUTHORITY

# Port of **Houston** Authority

WE'RE READY FOR BIGGER THINGS TO COME



PORT *of* HOUSTON AUTHORITY