

MODELLING OF SEABED SCOUR IN SUPPORT OF A MARINE PIPELINE INSTALLATION

N. J. MacDonald and M. H. Davies

Coldwater Consulting Ltd., Ottawa, ON

C. Guyatt and J. Pyrah

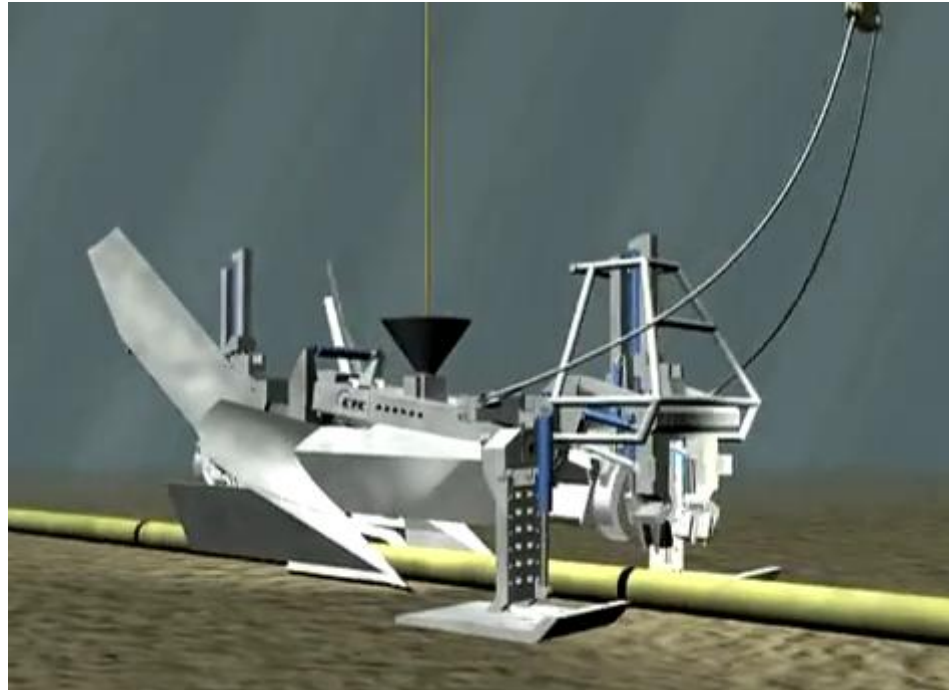
DeepOcean 1 UK Ltd., Darlington, UK

Marine Pipeline Installation



- ❑ Marine pipelines can be installed using a towed pipeline plough that simultaneously cuts a trench and lowers the pipeline
- ❑ Backfill of the trench, if required, can be performed with an additional pass along the pipeline with a backfill plough

AMP500 Pipeline Plough



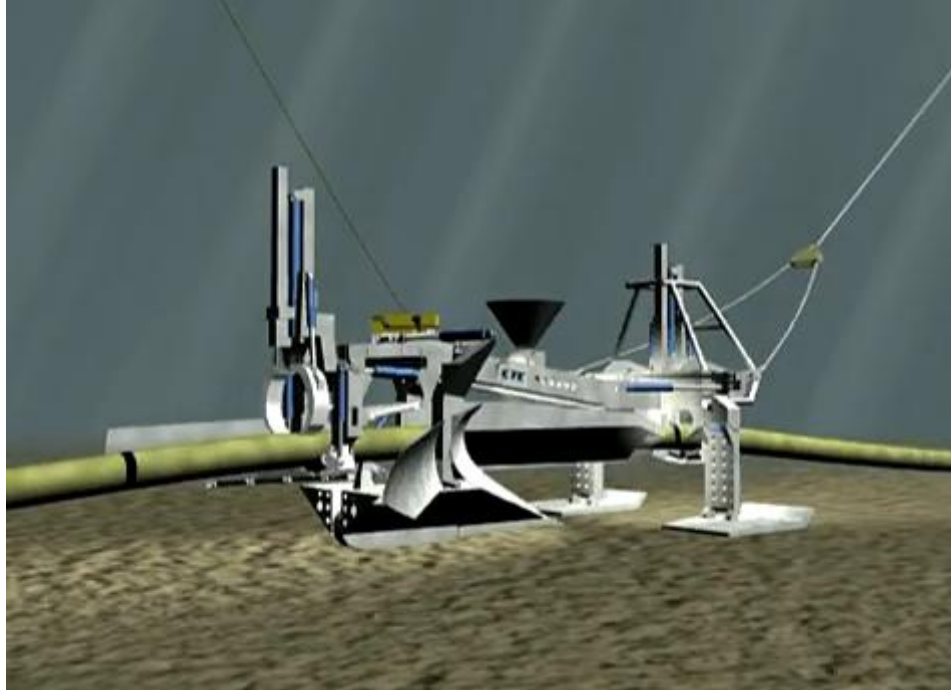
- Plough is lowered over pipeline

AMP500 Pipeline Plough



- Mechanical arms at front and back of plough lift pipeline off seabed

AMP500 Pipeline Plough



- ❑ Plough blades are lowered into place
- ❑ Pipeline is lowered into cradle

AMP500 Pipeline Plough



- Plough is pulled by support vessel, cutting trench and side-casting spoil

AMP500 Pipeline Plough



- Pipeline slides through cradle as plough is pulled forward
- Plough rides on skids at front, blade at rear

AMP500 Pipeline Plough



- Pipeline falls into cut trench behind plough
- Trench may be backfilled by a second pass using a backfill plough

AMP500 Pipeline Plough



- ❑ Ploughs tend to be very large
- ❑ AMP500 is approximately 10 m × 12 m × 22 m and 200 t

Support Vessel *Maersk Advancer*

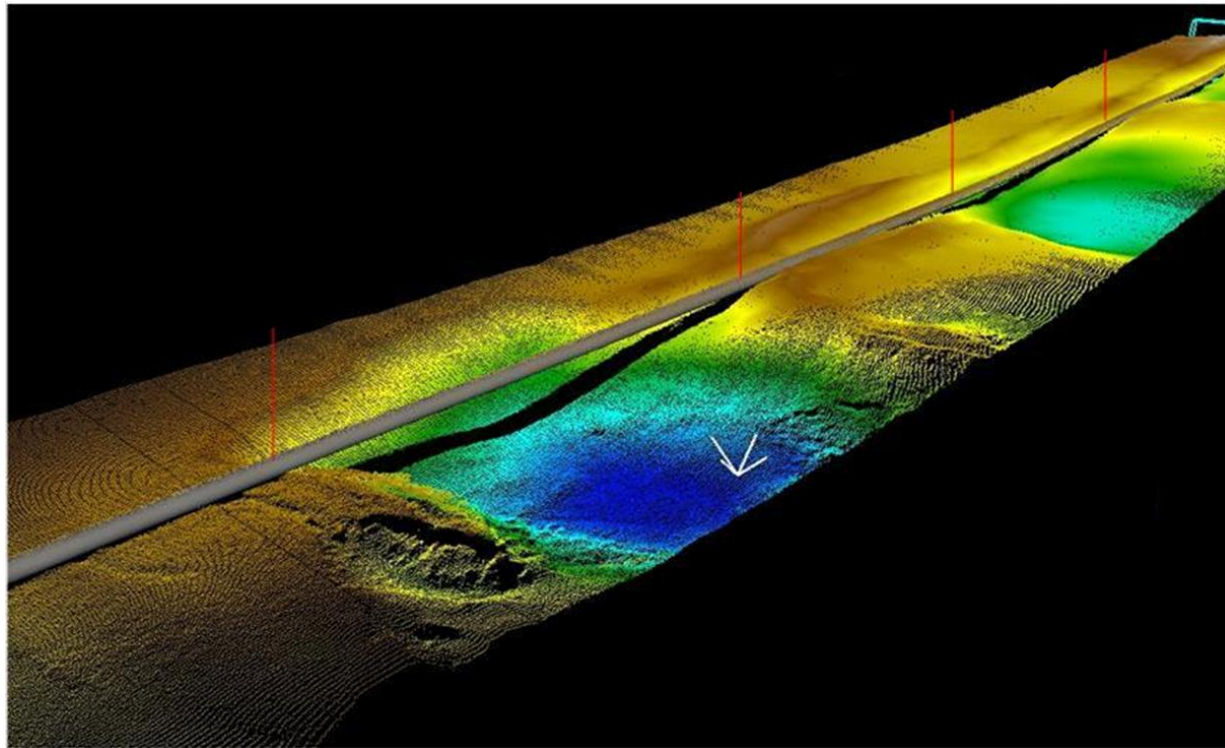


- Consequently, support vessels are also very large

Problems

- Under certain conditions, the forces required to tow the plough can be very high
- Flow from the vessel props can scour the seabed, leaving the newly-laid pipeline exposed or worse still, spanning an scour hole
 - ▣ Softer sediments
 - ▣ Shallow water

Propwash-Induced Scour



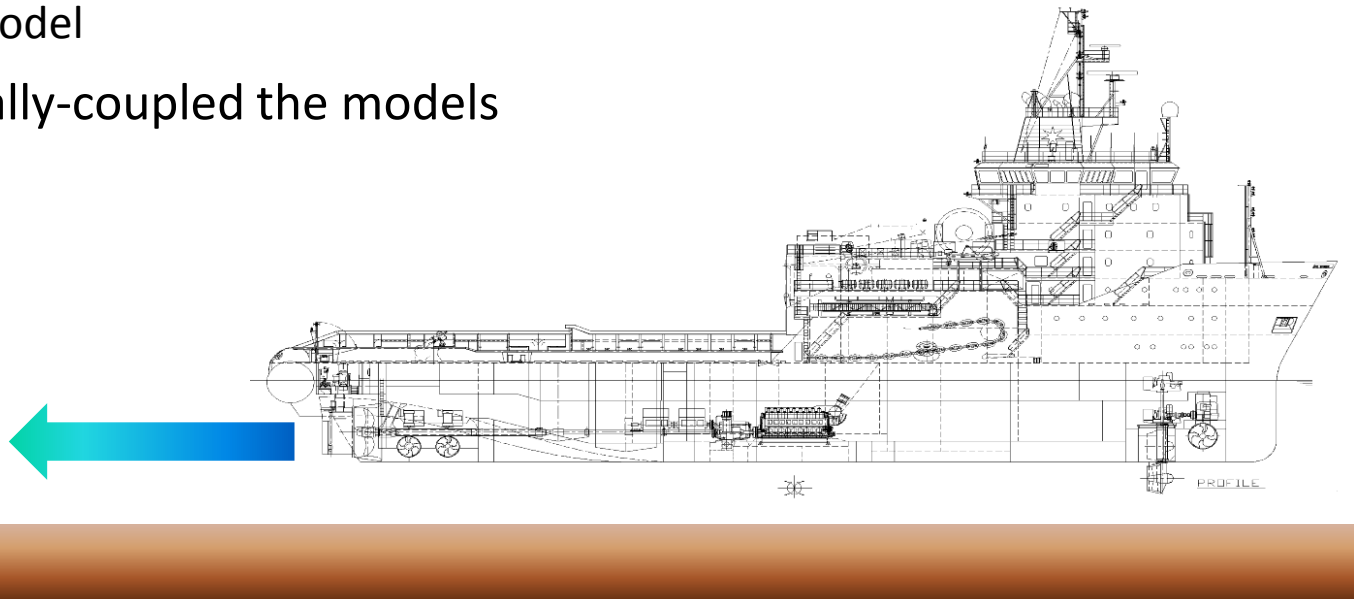
- Propwash-induced scour holes undermining pipeline are evident in this colourized sonar image

Project Aims

- Develop predictive relationships for near-bed velocities and scour growth as a function of:
 - ▣ Vessel characteristics (e.g., speed, thrust, trim, ...)
 - ▣ Local conditions (e.g., depth, soil type, ...)
- These relationships would be used to:
 - ▣ Plan the operations so as to minimize the issue
 - ▣ Enable the personnel on board the tow vessel to modify the operation as required, based on the actual performance observed

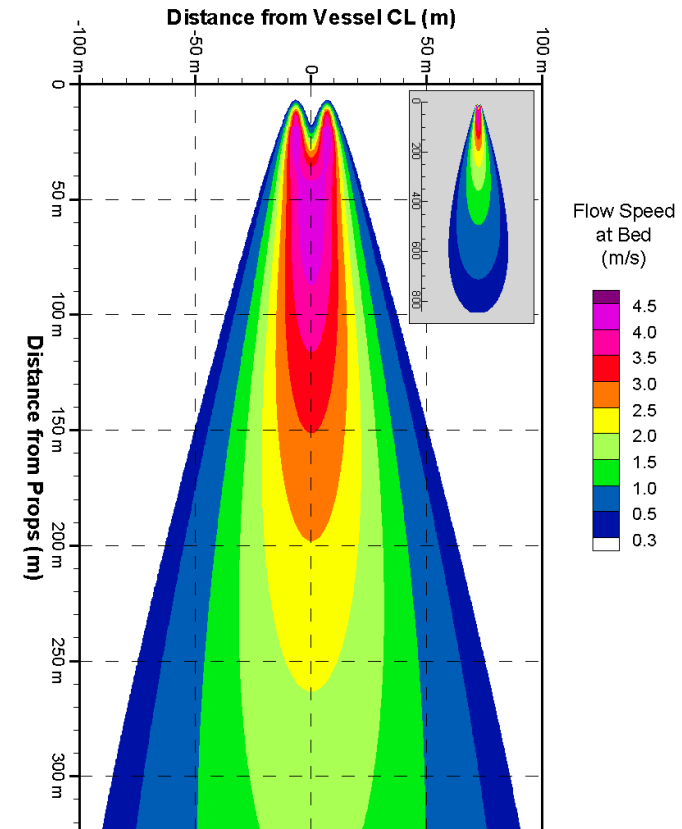
Computer Modelling

- Flows
 - ▣ 3D Propwash model
- Morphology
 - ▣ PTM model
- Dynamically-coupled the models



Flow Model

- Propwash model
 - ▣ 3D velocity fields based on jet flow assumption
 - ▣ flow spreads and decays with distance from the vessel due to turbulent diffusion
 - ▣ function of water depth, propeller diameter, spacing, trim and thrust
 - ▣ dynamically-coupled to PTM



Sediment Model

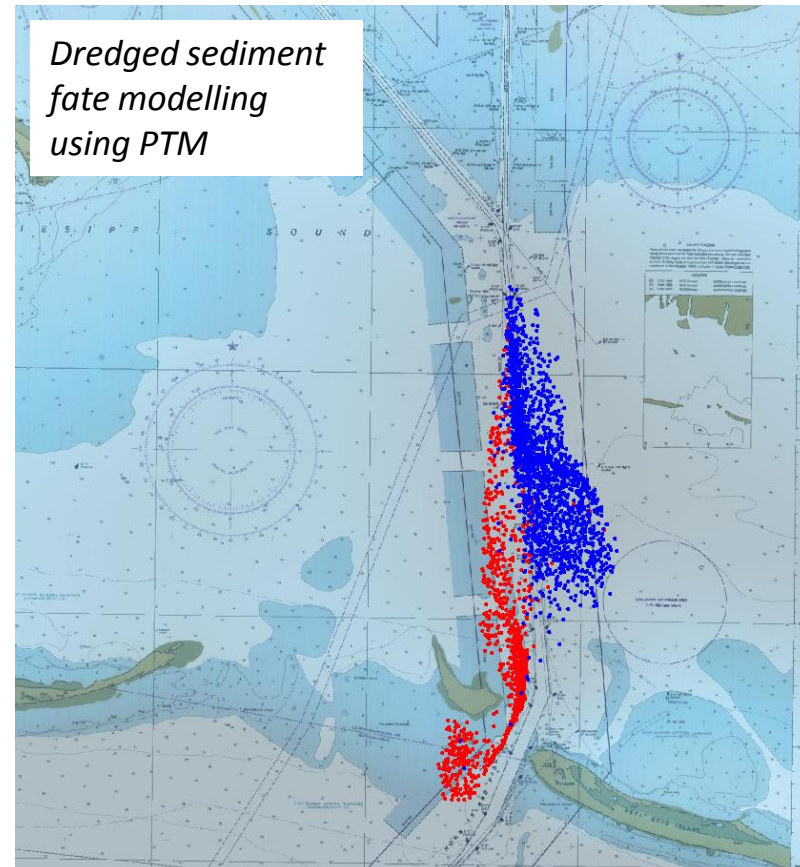
- Particle Transport Model (PTM)
- Developed by Coldwater
- Funded by two US Army Corps of Engineers Engineering Research and Development Center (ERDC) research programs:
 - ▣ Coastal Inlets Research Program (CIRP)
 - ▣ Dredging Operations and Environmental Research (DOER) Program
- Commercially-available as part of the Surface-water Modeling System (SMS) from Aquaveo

PTM

- PTM uses hydrodynamics from other models
- Multiple input
 - ▣ FE, FD, quadtree, ...
 - ▣ Waves, flows, ...
- PTM was developed for application to dredging and coastal projects
 - ▣ dredged material dispersion and fate, sediment pathway and fate, and constituent transport

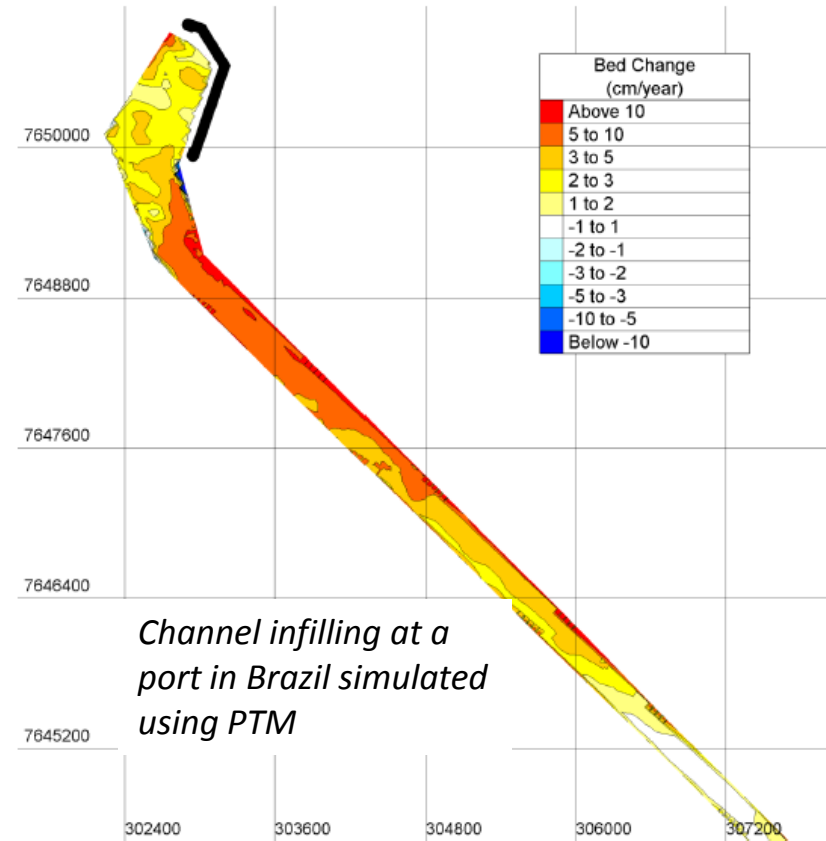
PTM

- Lagrangian (particle-based) scheme to compute the pathways and fate of sediments
- Typical application method for PTM



PTM

- Eulerian (mesh-based) calculations of bed conditions (e.g. shears, sediment transport, morphology, etc.) are always performed in the background of each run
- Present work illustrates use of these other capabilities
 - ▣ Non-cohesive and cohesive sediment transport and morphological evolution

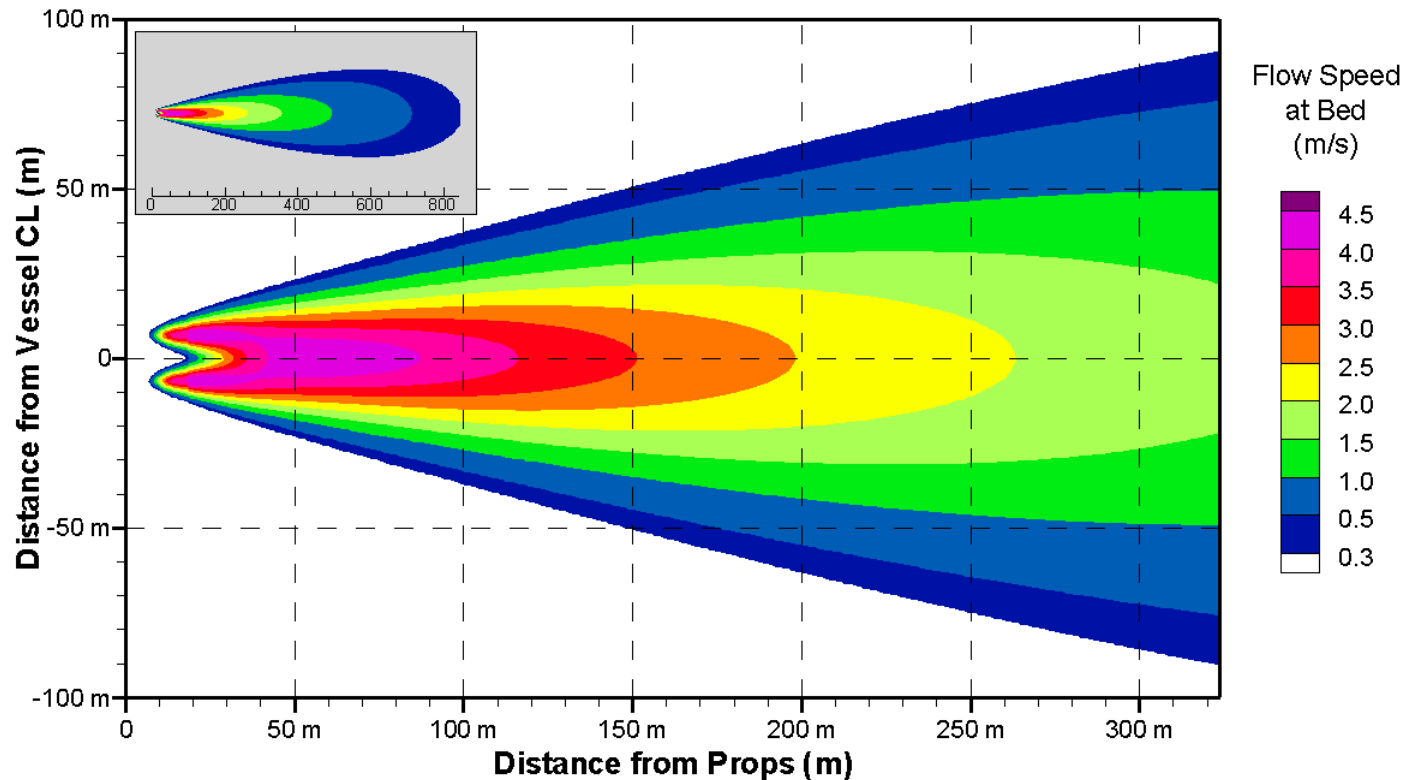


Test Conditions for Present Case

- Bed materials
 - ▣ fine, medium and coarse sand
 - ▣ soft, medium and hard clay
- Water depth
 - ▣ 12 → 24 m
- Vessel speed
 - ▣ 0 → 400 m/hr
- Bollard pull
 - ▣ 100 → 200 Te

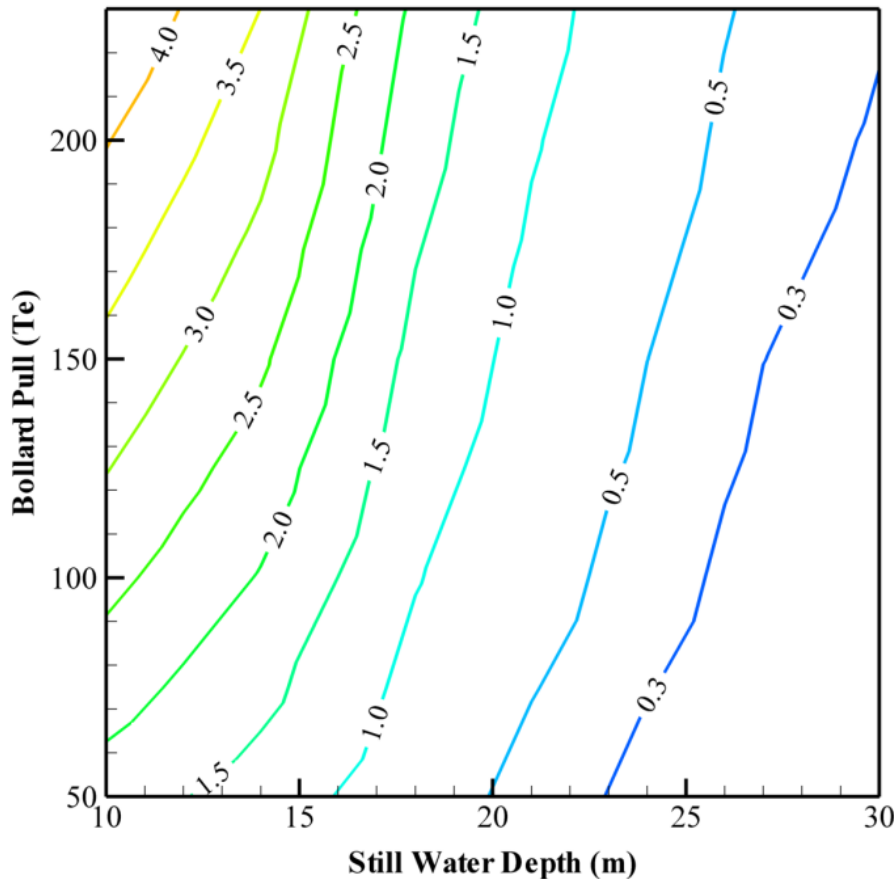
| Bed | Case | Rate (m/s) | Depth (m) | Bollard Pull (Te) |
|-----------|------|------------|-----------|-------------------|
| Fine Sand | A1 | 0 | 12 | 100 |
| | A3 | 0 | 12 | 200 |
| | A5 | 0 | 14 | 100 |
| | A7 | 0 | 14 | 200 |
| | A9 | 0 | 24 | 200 |
| | B1 | 200 | 12 | 100 |
| | B3 | 200 | 12 | 200 |
| Med. Sand | B4 | 200 | 24 | 200 |
| | A2 | 0 | 12 | 100 |
| | A4 | 0 | 12 | 200 |
| | A6 | 0 | 14 | 100 |
| | A7 | 0 | 14 | 200 |
| Soft Clay | A10 | 0 | 24 | 200 |
| | B2 | 200 | 12 | 100 |
| | C3 | 0 | 12 | 100 |
| Med. Clay | C6 | 0 | 24 | 100 |
| | D3 | 400 | 12 | 100 |
| | C1 | 0 | 12 | 100 |
| Hard Clay | C4 | 0 | 24 | 100 |
| | D1 | 400 | 12 | 100 |
| | C2 | 0 | 12 | 100 |
| | C5 | 0 | 24 | 100 |
| | D2 | 400 | 12 | 100 |

Maximum Flow Velocities



- Typical flow pattern at the bed
- Note that the vessel has two props

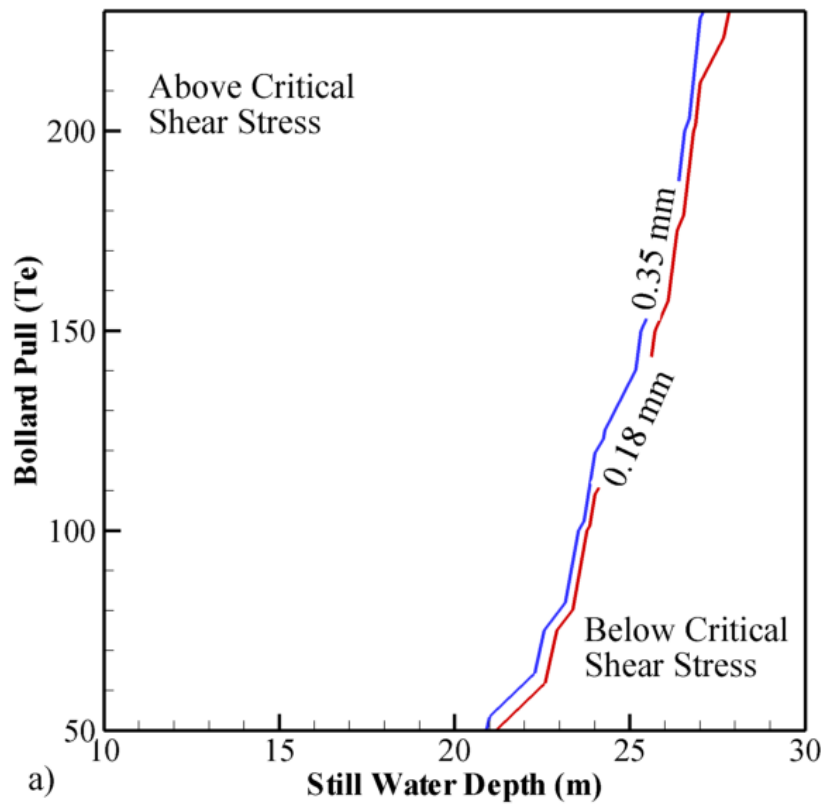
Maximum Flow Velocities



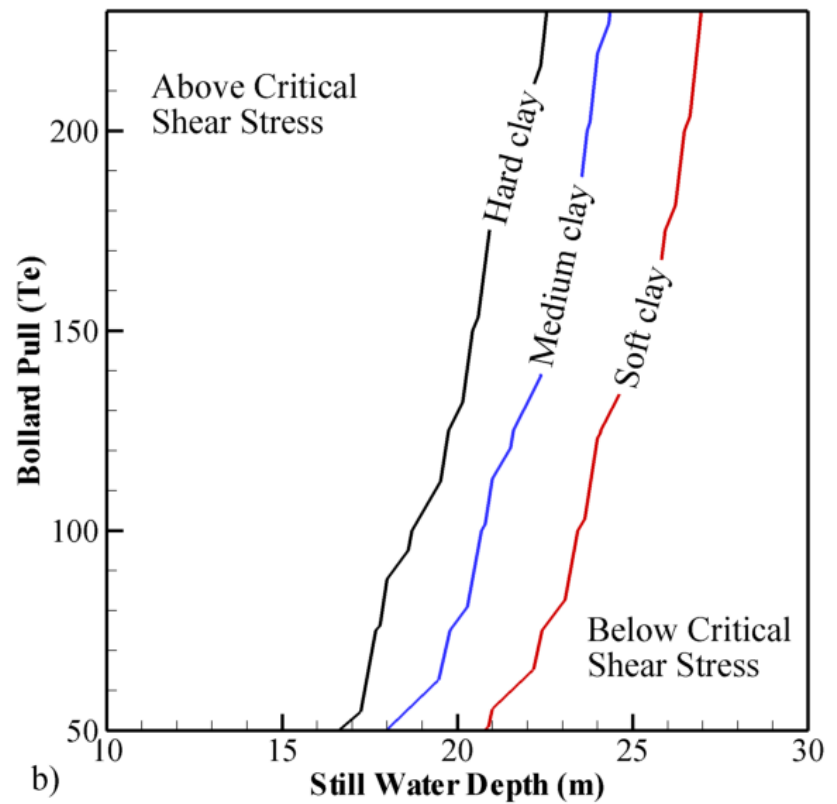
- Peak velocities from all the simulations were used to generate plots of maximum flow velocity at the bed as a function of bollard pull and water depth
- Results are unique to this case as they take into account specific characteristics of the setup
 - Prop size, blade pitch, ...
 - Vessel trim under load
 - ...
- Chart designed for use by on-board engineers

Critical Conditions

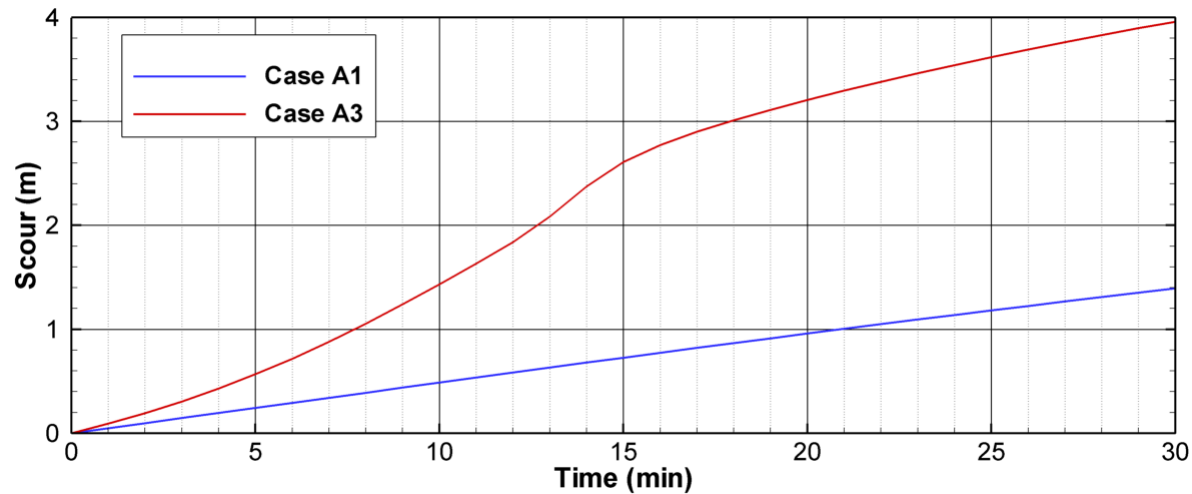
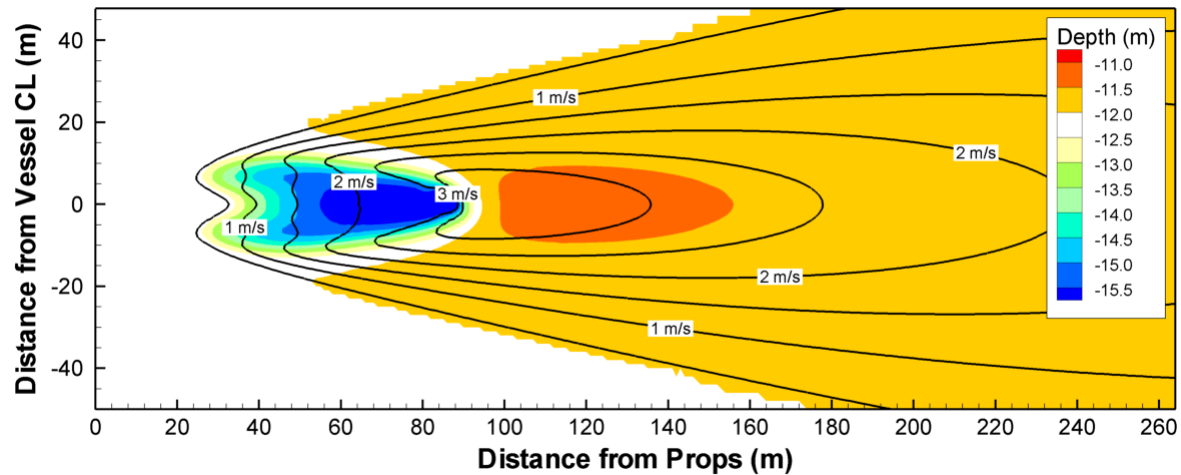
Non-cohesive



Cohesive

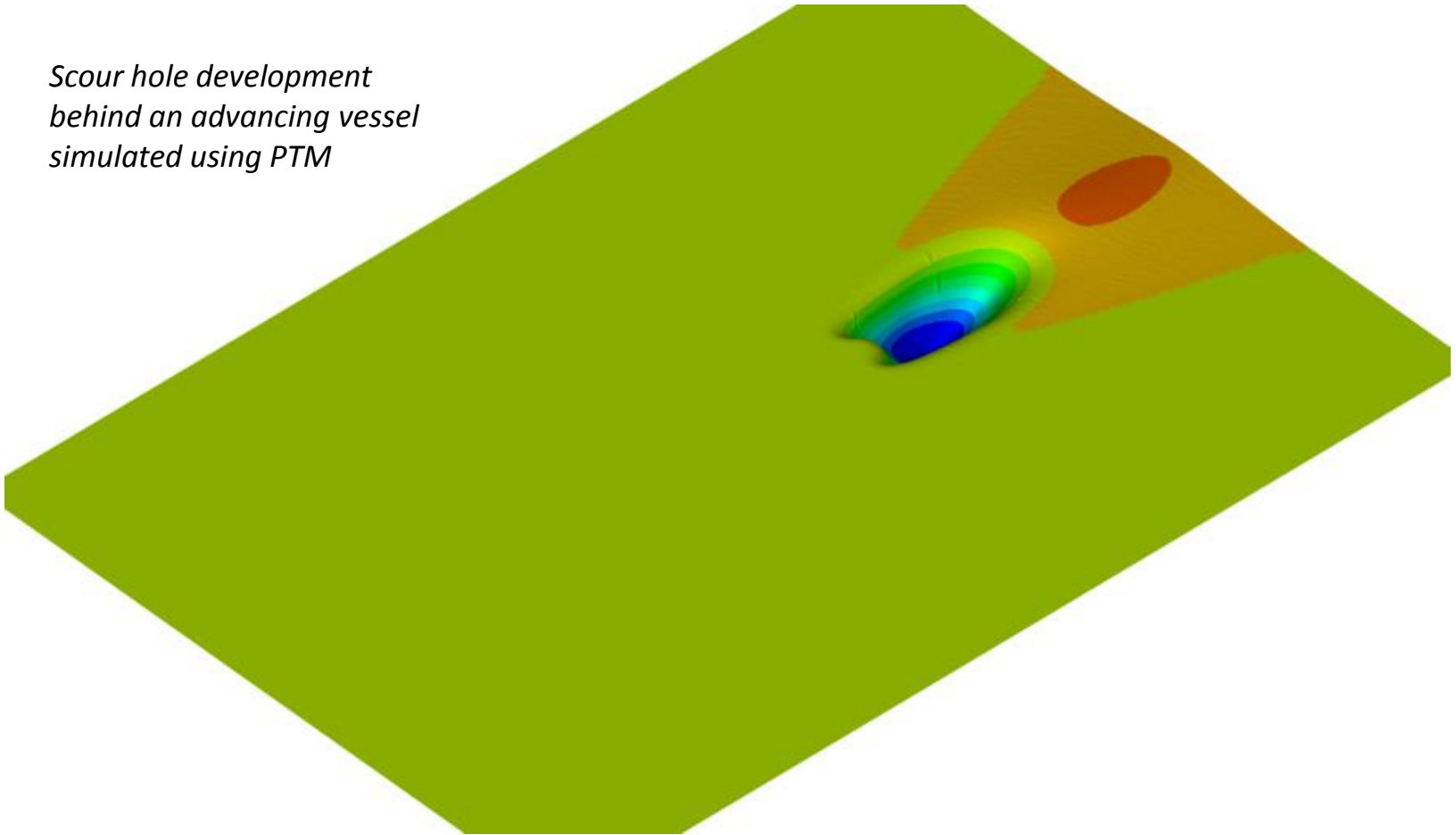


Stationary Vessel



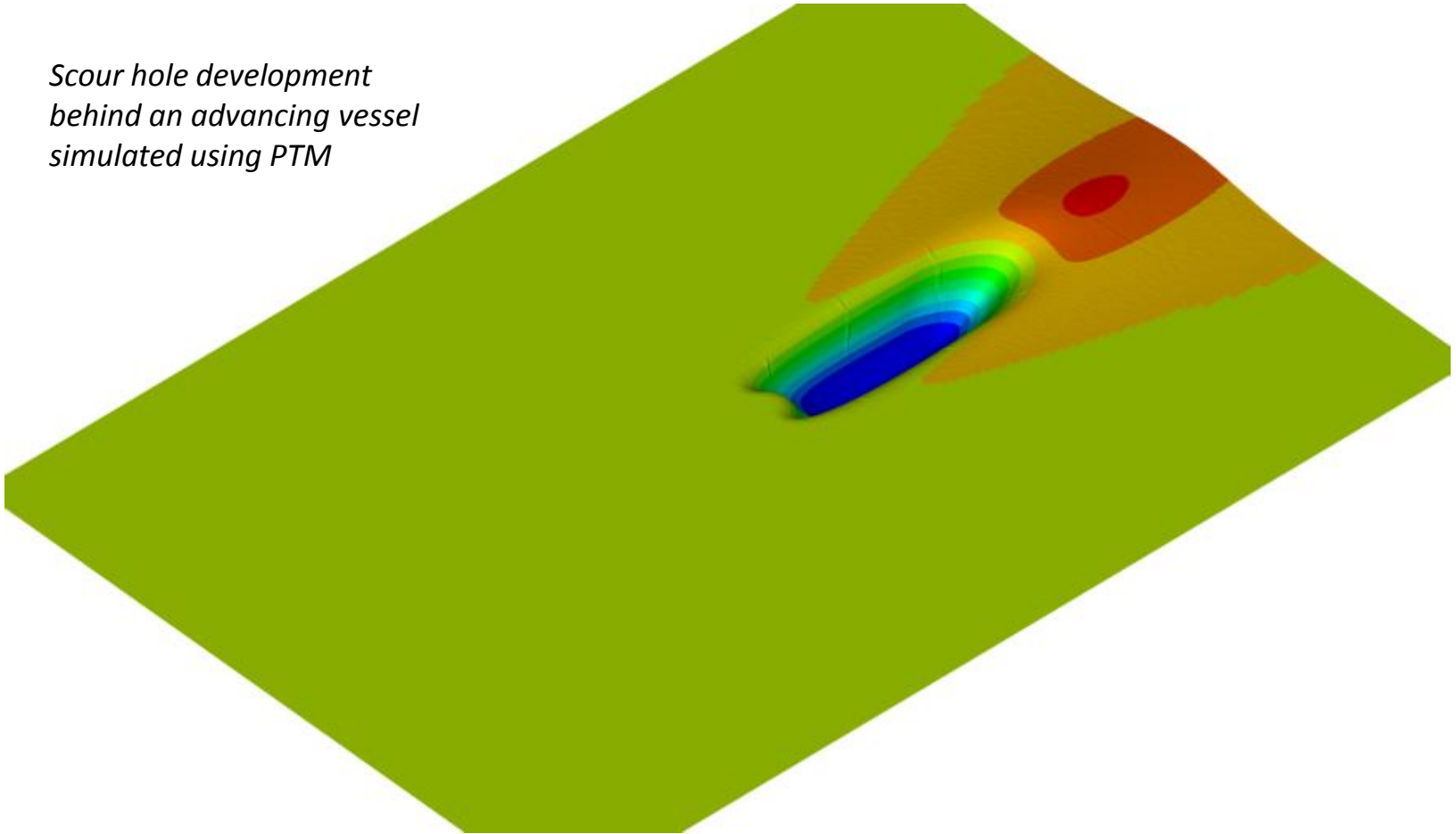
Steady Advancing Vessel

*Scour hole development
behind an advancing vessel
simulated using PTM*



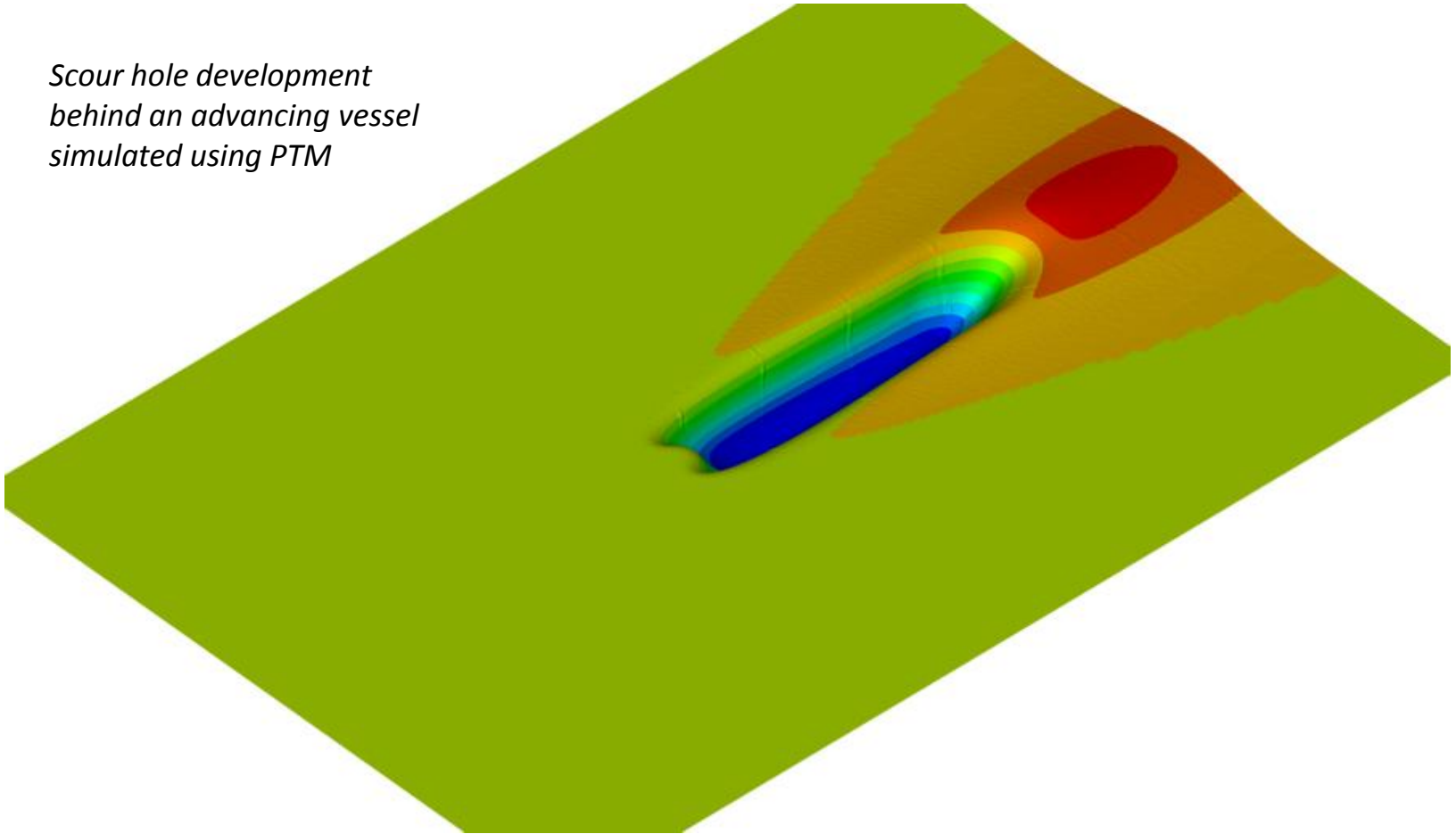
Steady Advancing Vessel

*Scour hole development
behind an advancing vessel
simulated using PTM*



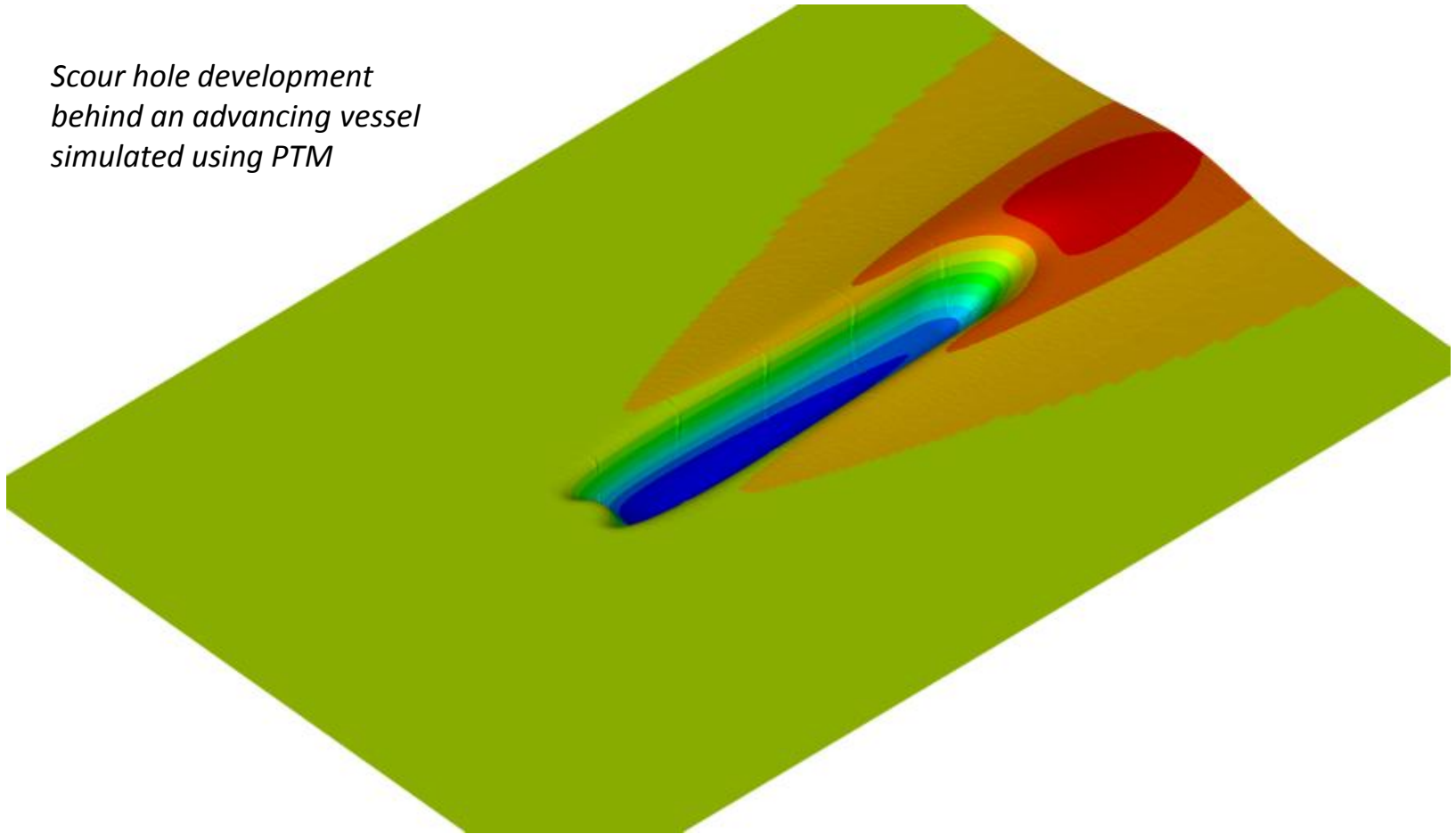
Steady Advancing Vessel

*Scour hole development
behind an advancing vessel
simulated using PTM*



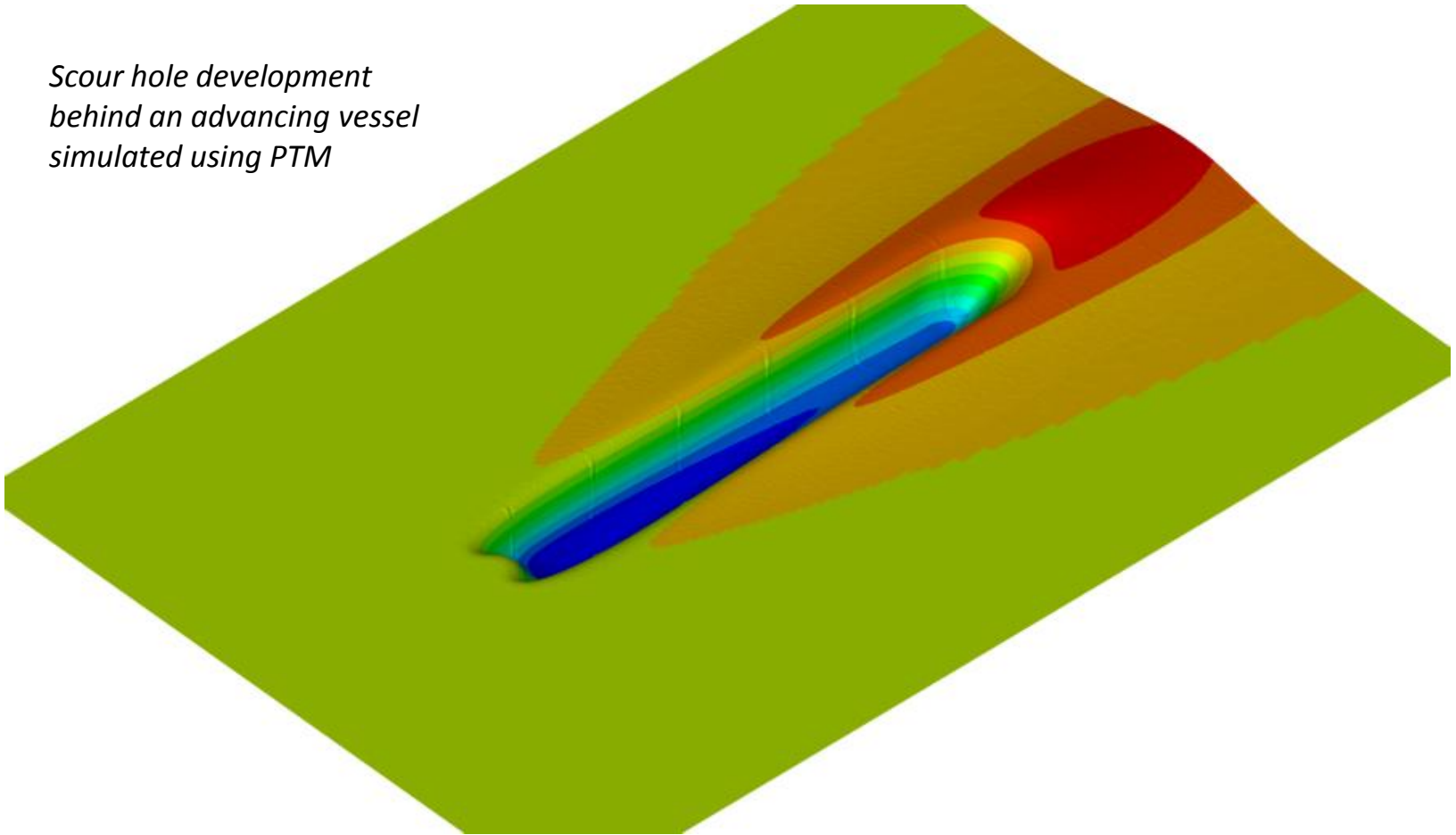
Steady Advancing Vessel

*Scour hole development
behind an advancing vessel
simulated using PTM*



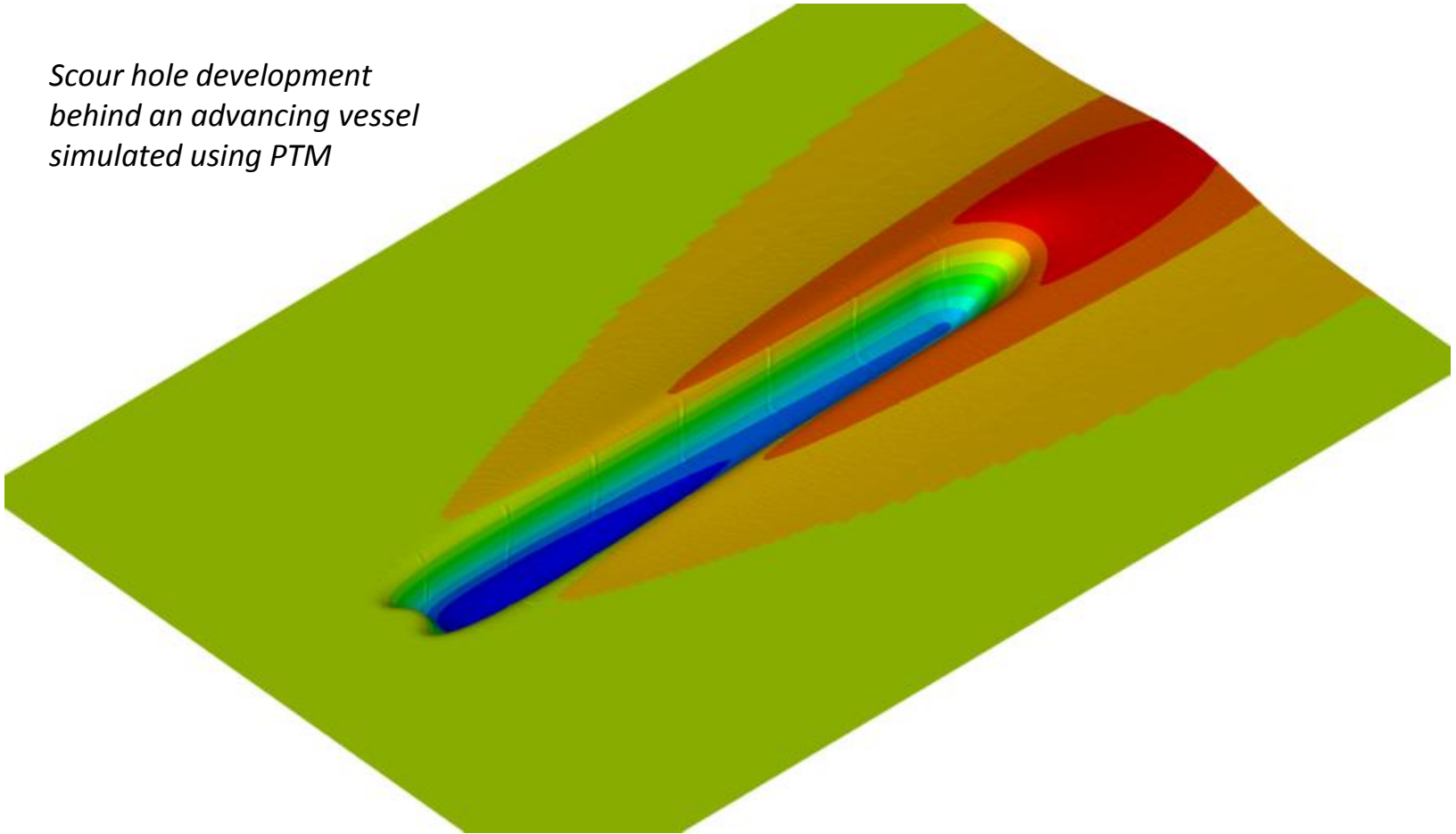
Steady Advancing Vessel

*Scour hole development
behind an advancing vessel
simulated using PTM*



Steady Advancing Vessel

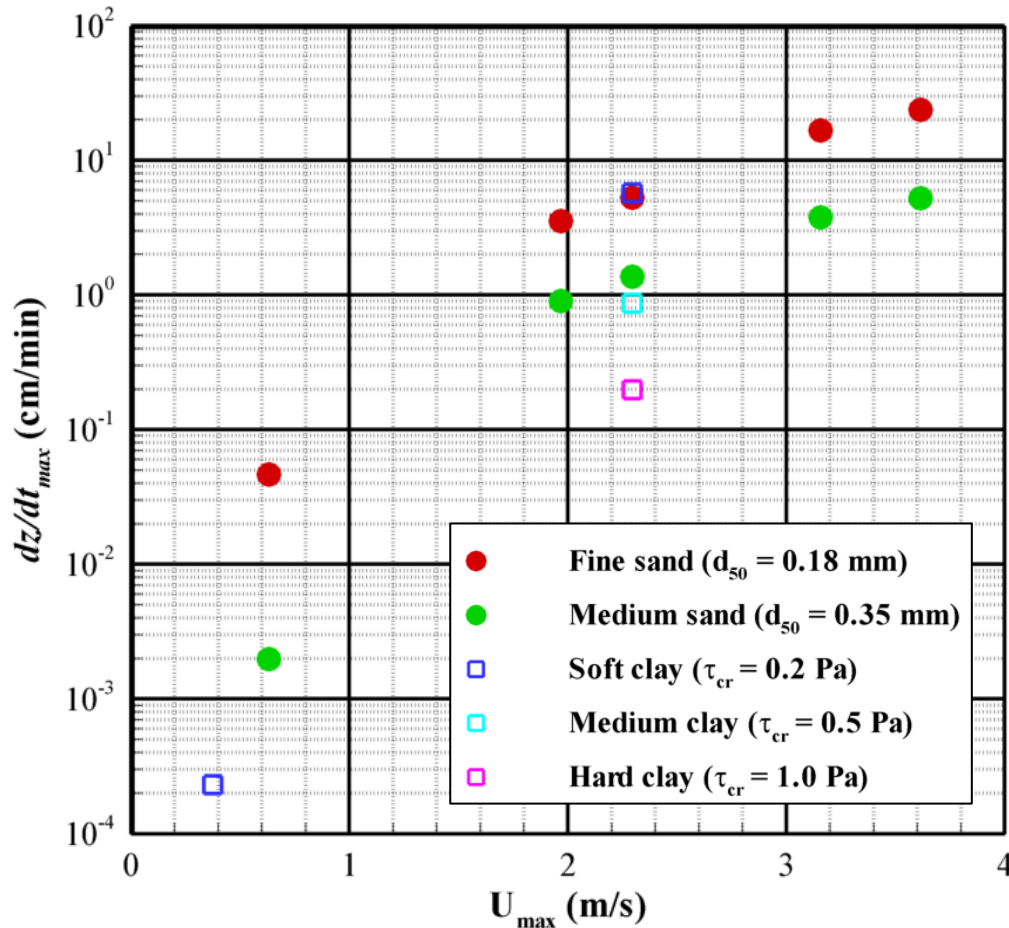
*Scour hole development
behind an advancing vessel
simulated using PTM*



Observations

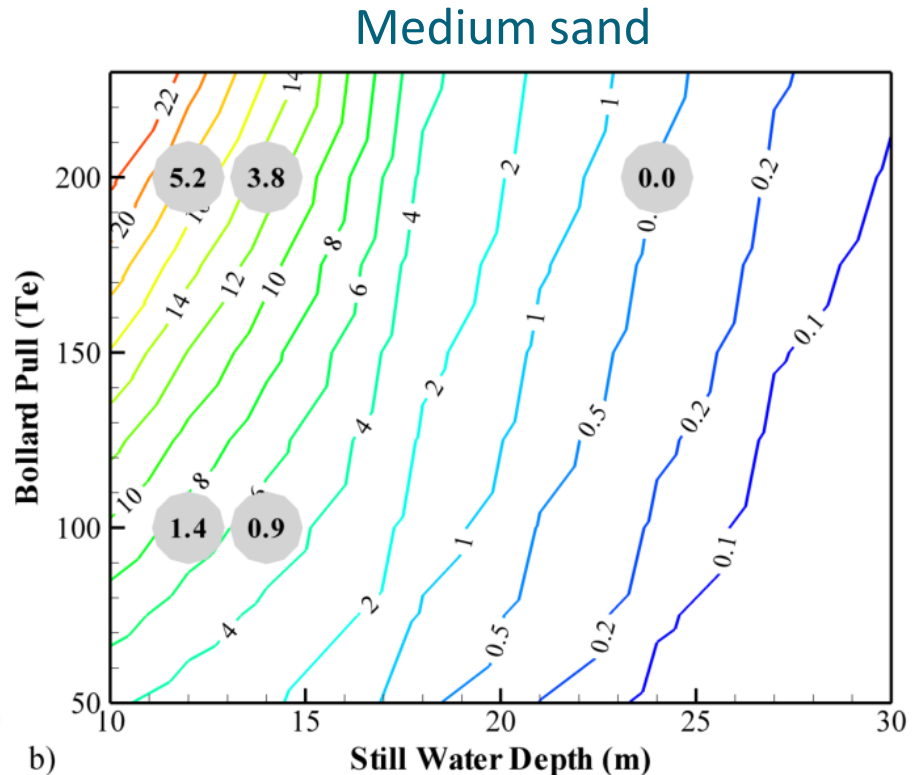
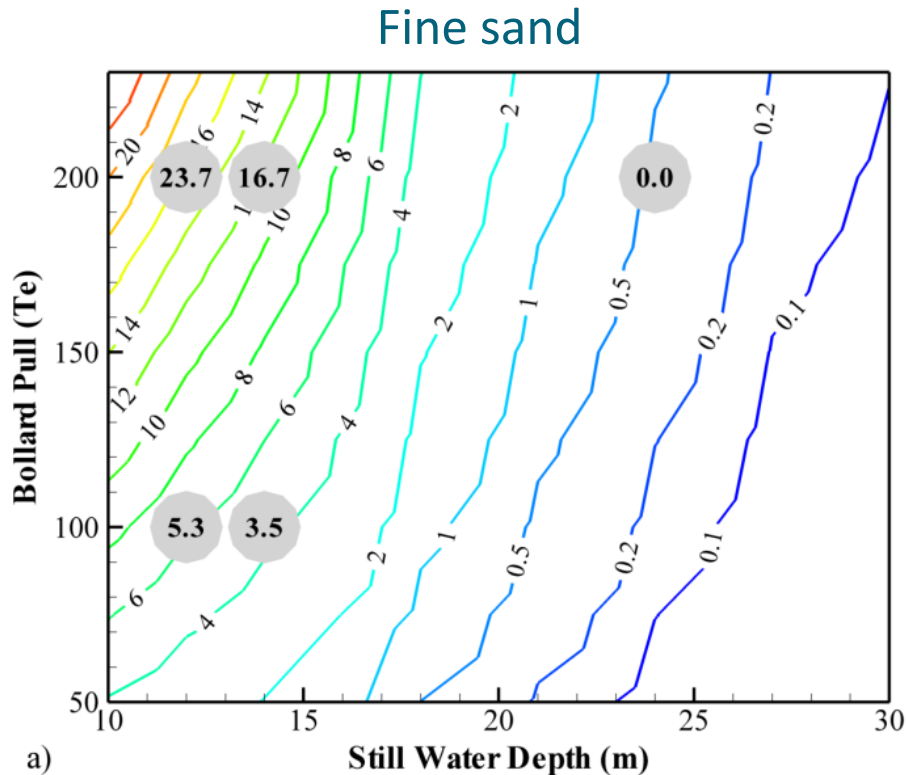
- As the vessel proceeds along a plough line, a scour hole can develop roughly 50 to 200 m behind the vessel
- Generally, the scouring action of the propwash is backfilled through deposition processes as the ship makes headway
 - ▣ Depth of sediment disturbance is significantly greater than the final scour trench depth
- Due to sediment spreading (diffusion), this infilling does not fully equal the scour hole excavation resulting in a net trenching that is shallower than the initial scour hole excavation

Maximum Scour Rate



- Scour rate chart prepared for engineers on board
- To be used in conjunction with maximum bed velocity chart presented earlier

Maximum Scour Rate and Shear



Summary of Scour Rates

| Bed | Case | Rate (m/s) | Depth (m) | Bollard Pull (Te) | 10 min. Scour (cm) | 20 min. Scour (cm) | 30 min. Scour (cm) | Avg. dz/dt (cm/min) | Max. dz/dt (cm/min) | Max. Scour (cm) |
|-----------|------|------------|-----------|-------------------|--------------------|--------------------|--------------------|---------------------|---------------------|-----------------|
| Fine Sand | A1 | 0 | 12 | 100 | 50.6 | 96.8 | 139.3 | 4.6 | 5.3 | |
| | A3 | 0 | 12 | 200 | 201.6 | 323.3 | 452.5 | 15.1 | 23.7 | |
| | A5 | 0 | 14 | 100 | 33.1 | 62.1 | 87.6 | 2.9 | 3.5 | |
| | A7 | 0 | 14 | 200 | 125.1 | 203.9 | 260.7 | 8.7 | 16.7 | |
| | A9 | 0 | 24 | 200 | 0.5 | 0.9 | 1.4 | 0.05 | 0.05 | |
| | B1 | 200 | 12 | 100 | | | | | | 46.3 |
| | B3 | 200 | 12 | 200 | | | | | | 159.6 |
| | B4 | 200 | 24 | 200 | | | | | | 0.5 |
| Med. Sand | A2 | 0 | 12 | 100 | 13.6 | 26.8 | 39.7 | 1.3 | 1.4 | |
| | A4 | 0 | 12 | 200 | 48.1 | 93.6 | 136.8 | 4.6 | 5.2 | |
| | A6 | 0 | 14 | 100 | 8.8 | 17.3 | 25.4 | 0.8 | 0.9 | |
| | A7 | 0 | 14 | 200 | 35.5 | 66.9 | 95.0 | 3.2 | 3.8 | |
| | A10 | 0 | 24 | 200 | 0.0 | 0.0 | 0.1 | 0.003 | 0.003 | |
| | B2 | 200 | 12 | 100 | | | | | | 11.5 |
| Soft Clay | C3 | 0 | 12 | 100 | 52.4 | 96.9 | 135.7 | 4.5 | 5.7 | |
| | C6 | 0 | 24 | 100 | 0.0 | 0.0 | 0.0 | 0.0 | 0.0 | |
| | D3 | 400 | 12 | 100 | | | | | | 76.2 |
| Med. Clay | C1 | 0 | 12 | 100 | 8.6 | 16.9 | 25.0 | 0.8 | 0.9 | |
| | C4 | 0 | 24 | 100 | 0.0 | 0.0 | 0.0 | 0.0 | 0.0 | |
| | D1 | 400 | 12 | 100 | | | | | | 12.2 |
| Hard Clay | C2 | 0 | 12 | 100 | 2.0 | 3.9 | 5.9 | 0.2 | 0.2 | |
| | C5 | 0 | 24 | 100 | 0.0 | 0.0 | 0.0 | 0.0 | 0.0 | |
| | D2 | 400 | 12 | 100 | | | | | | 2.7 |

Conclusions

- The scour can be backfilled by deposition as the ship makes headway; however, the depth of sediment disturbance is significantly greater than the final scour trench depth
- Irregular tow operations (e.g., occasional high thrust in shallow water) can create conditions wherein large scour holes are generated
- In situations where scour is predicted to be problematic, two tow vessels, one to each side of the trench could be used with each vessel operating at one-half the bollard pull required by the single vessel
- The width of the predicted scour holes is generally consistent with observed scour holes reported to Coldwater by DeepOcean
 - Of the order of 20 m x 20 m across and 3 to 5 m deep

For More Information

Please contact:

N. J. MacDonald
Coldwater Consulting Ltd.
5510 Canotek Rd., Suite 203
Ottawa, ON
K1J 9J4
Canada

+1 613 747 2544

info@coldwater-consulting.com

www.coldwater-consulting.com