

U.S. Army Corps of Engineers Wilmington District

2012 East Coast - WEDA
October 9-11, 2012

Ongoing & Upcoming Contracts



®

US Army Corps of Engineers
BUILDING STRONG®



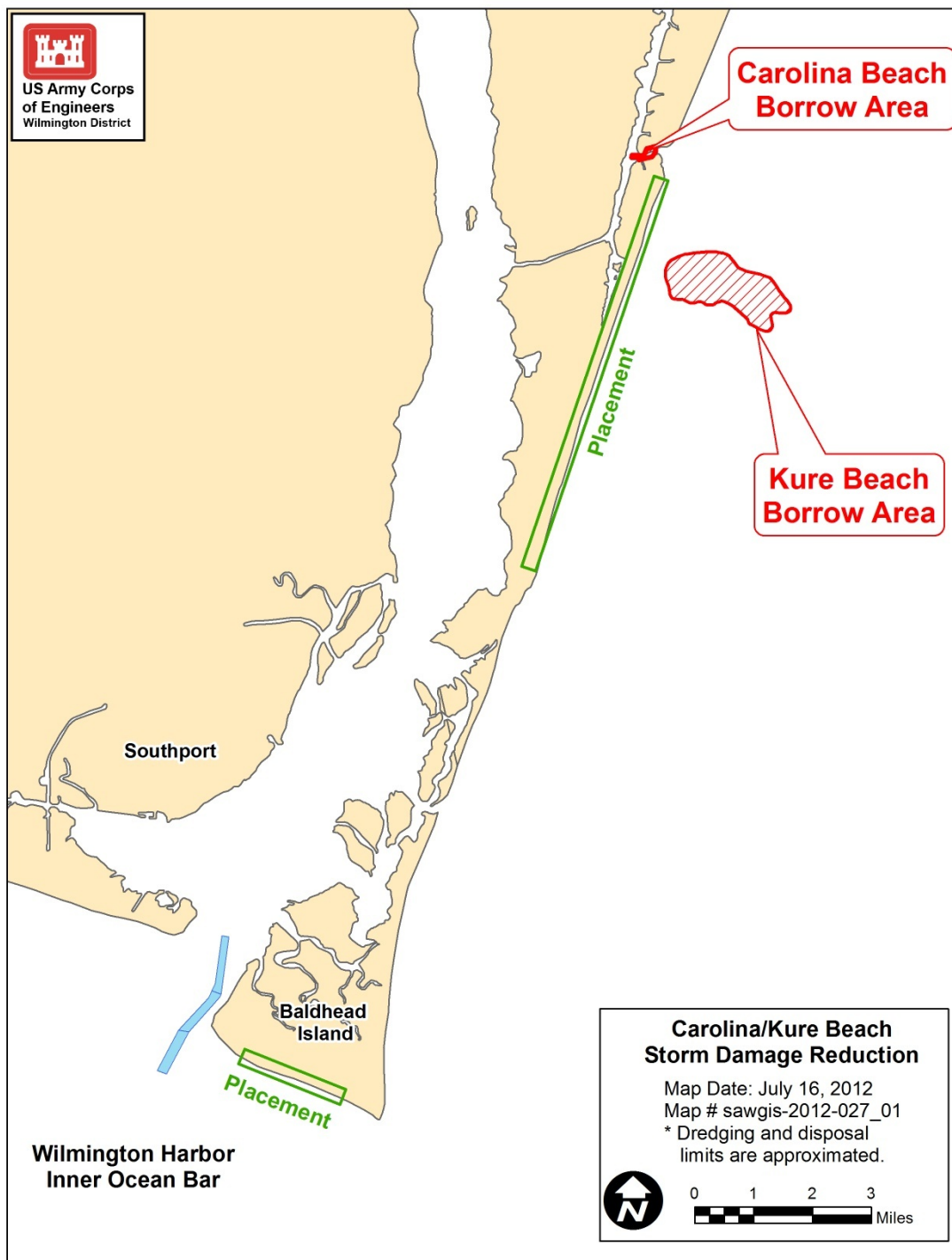
Wilmington District – Ongoing Contracts

	Project	Quantity	Dredge Type	Award Date	Dredging Start Date	Dredging End Date	Contractor
1	Wilmington Harbor - Eagle Island Improvements (FY12)	N/A	N/A	15-Sep-11	30-Oct-11	31-Mar-13	Corey Enterprises, Inc.
2	Masonboro Inlet - Jetty Repairs	N/A	N/A	31-Jul-12	10-Oct-12	15-Oct-13	Precon Marine Inc.
3	Rollinson Channel & Silver Lake Harbor - Maintenance Dredging	330,000	Pipeline	21-Aug-12	4-Sep-12	31-Mar-13	Cottrell Contracting Corp.
4	Manteo (Shallowbag) Bay - Interior Channels	590,000	Pipeline	24-Aug-12	9-Oct-12	31-Mar-13	Southern Dredging Co., Inc.
5	Atlantic Intracoastal Waterway - Inlet Crossings	350,000	Pipeline	11-Sep-12	16-Nov-12	31-Mar-13	Southwind Construction Corp.
6	Wilmington Harbor - Eagle Island Improvements (FY13)	N/A	N/A	13-Sep-12	TBD	30-Oct-13	ES&J Enterprises, Inc.
7	Wilmington Harbor - Outer Ocean Bar	850,000	Hopper	17-Sep-12	1-Dec-12	31-Mar-13	Great Lakes Dredge & Dock Co., LLC
8	Morehead City Harbor - Outer Ocean Bar	200,000	Hopper	17-Sep-12	1-Dec-12	31-Mar-13	Great Lakes Dredge & Dock Co., LLC
9	Wilmington Harbor - Anchorage Basin	710,000	Pipeline	28-Sep-12	1-Nov-12	31-Jan-13	Southern Dredging Co., Inc.
10	Wilmington Harbor - Anchorage Basin Deepening (CG)	800,000	Pipeline	28-Sep-12	TBD	31-Jan-14	Great Lakes Dredge & Dock Co., LLC





US Army Corps
of Engineers
Wilmington District



Carolina Beach & Kure Beach Storm Damage Reduction & Wilmington Harbor Inner Ocean Bar Maintenance Dredging



BUILDING STRONG®



US Army Corps
of Engineers
Wilmington District

**Carolina Beach
Borrow Area**

Carolina Beach Inlet

Atlantic Ocean

**Kure Beach
Borrow Area**

Carolina Beach

**Carolina Beach
Placement Area**

Kure Beach

**Kure Beach
Placement Areas**

Carolina & Kure Beach Projects

Map Date: July 18, 2012
Map # sawgis-2012-027_02a
* Dredging and placement
limits are approximated.



0 1 2 3
Miles

Project:

**Carolina Beach / Kure
Beach, NC**

Scope of Work:

Coastal Storm Damage
Reduction

Material Type:

Sand

Placement Areas

Carolina Beach:

Est. Placement Quantities

Kure Beach:

680,000 cubic yards

430,000 cubic yards

Distance to Place Area:

Varies

Type of Equipment

Carolina Beach:

Pipeline

Kure Beach:

Hopper Dredge/Pipeline

Env. Windows:

(Sea Turtle Nesting)

November 16 – April 30

Completion Date:

April 2013

Issue Date:

9/25/12

Sch. Bid Opening Date:

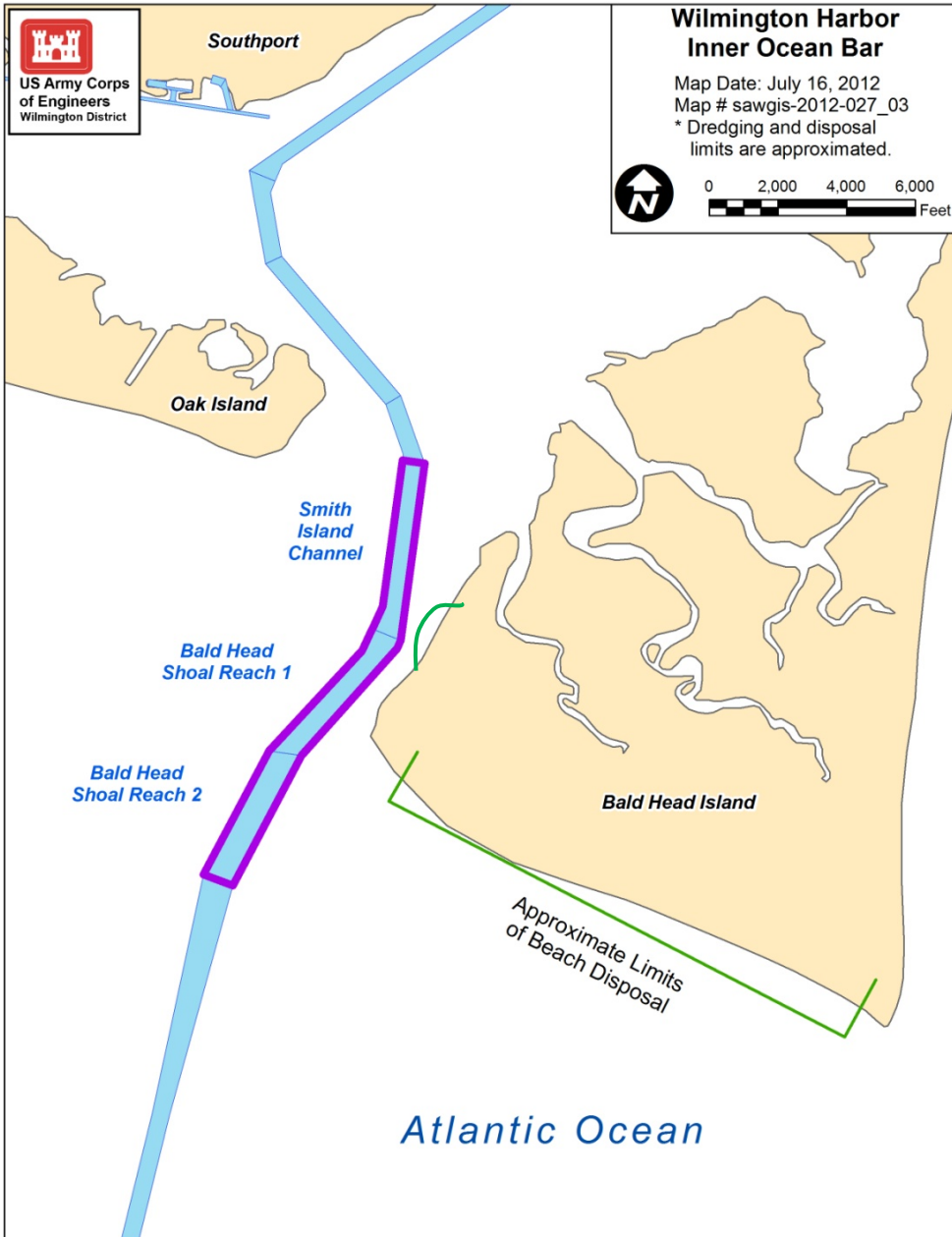
10/24/2012

Sch. Start Date:

11/16/2012



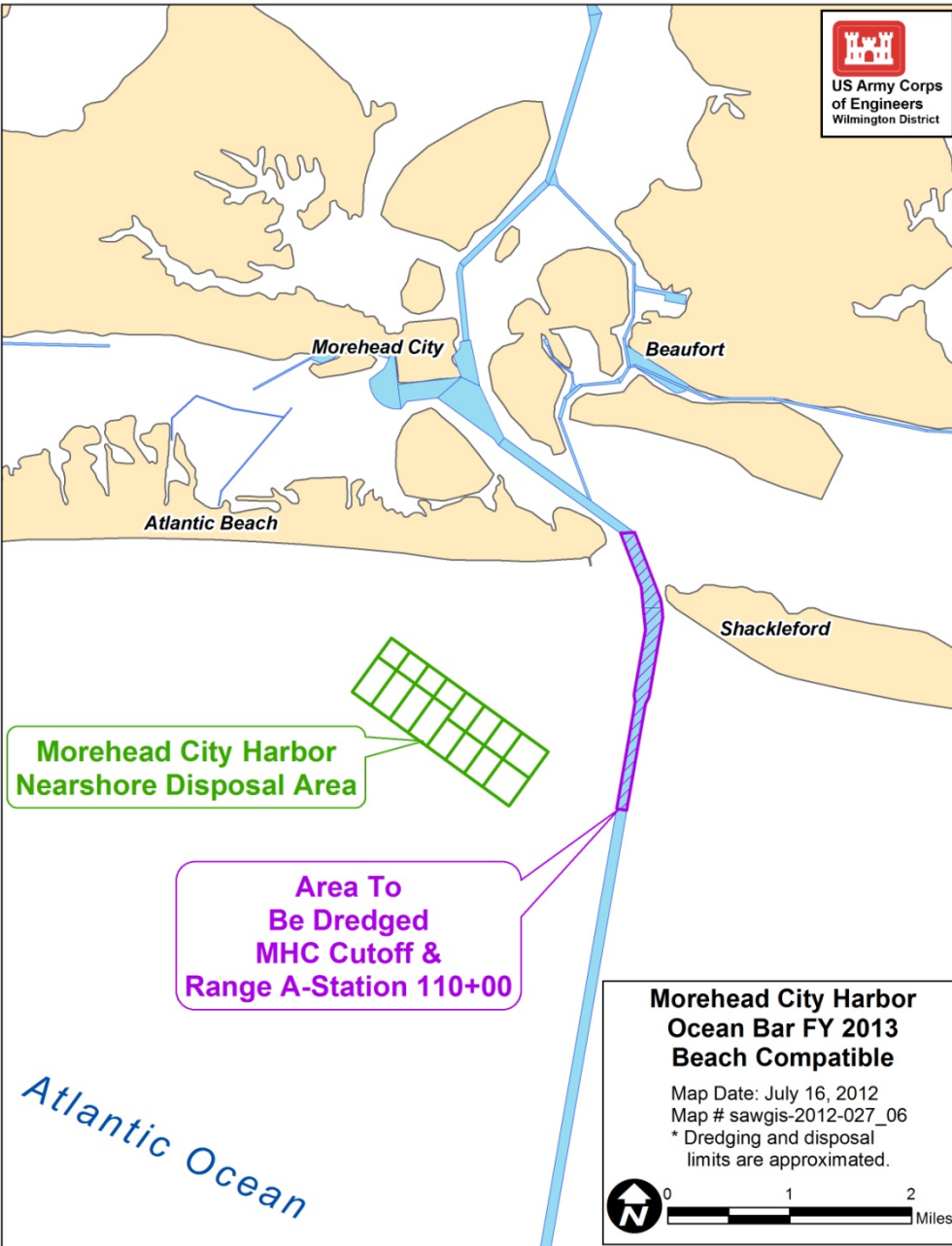
BUILDING STRONG®



Project:	Wilmington Harbor Inner Ocean Bar
Scope of Work:	Maintenance
Depth:	44 ft (required); + 2 ft
Dredging Width:	300 - 700 ft
Dredging Length:	~ 2.5 miles
Material Type:	Sand
Placement Areas:	
South Beach:	1,800,000 cubic yards
West Beach:	50,000 cubic yards
Distance to Place Area:	Varies
Type of Equipment:	Ocean-Certified Pipeline
Env. Windows: (Sea Turtle Nesting)	November 16 – April 30
Completion Date:	April 2013
Issue Date:	9/25/2012
Bid Opening Date:	10/24/2012
Sch. Start Date:	11/16/2012

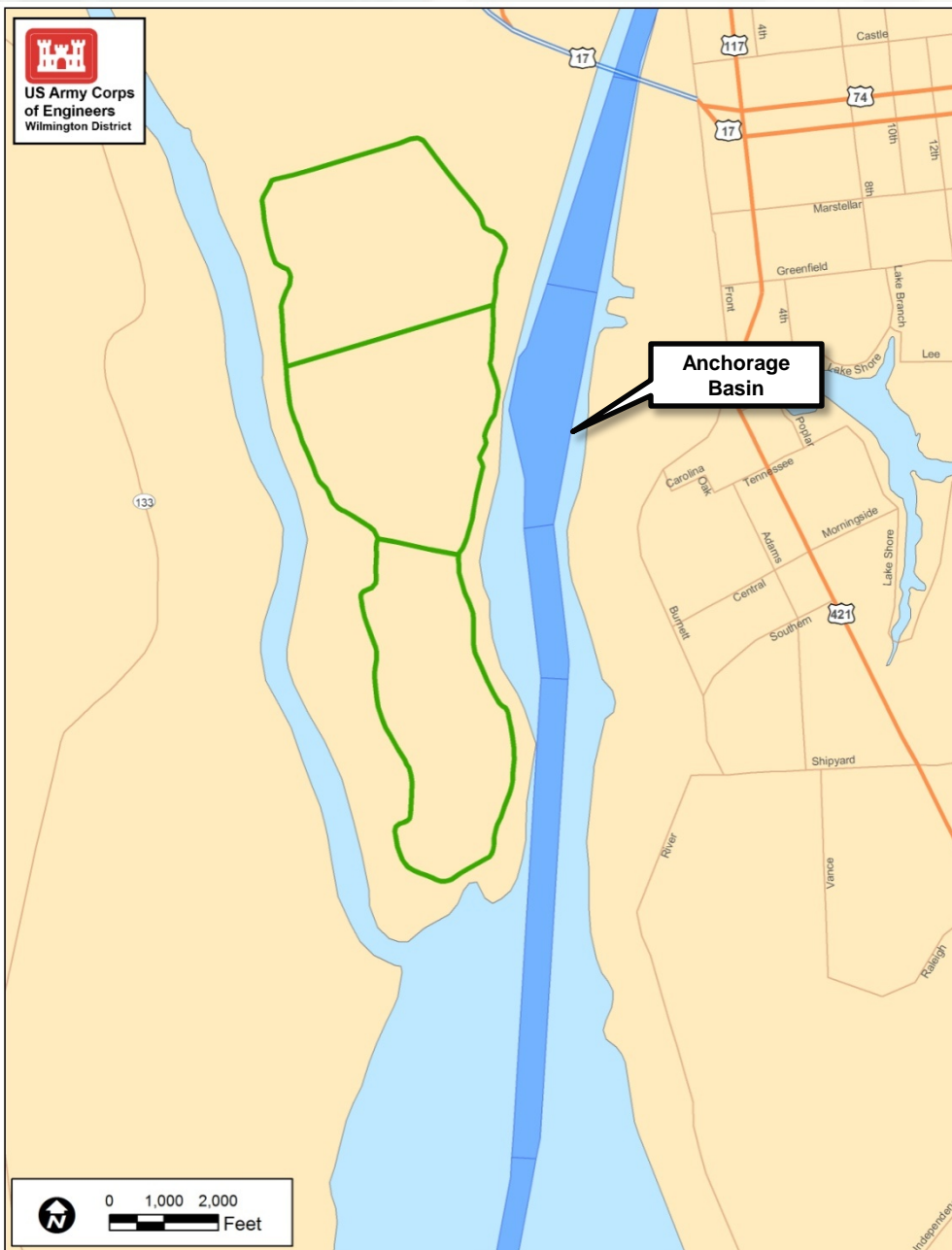


BUILDING STRONG®



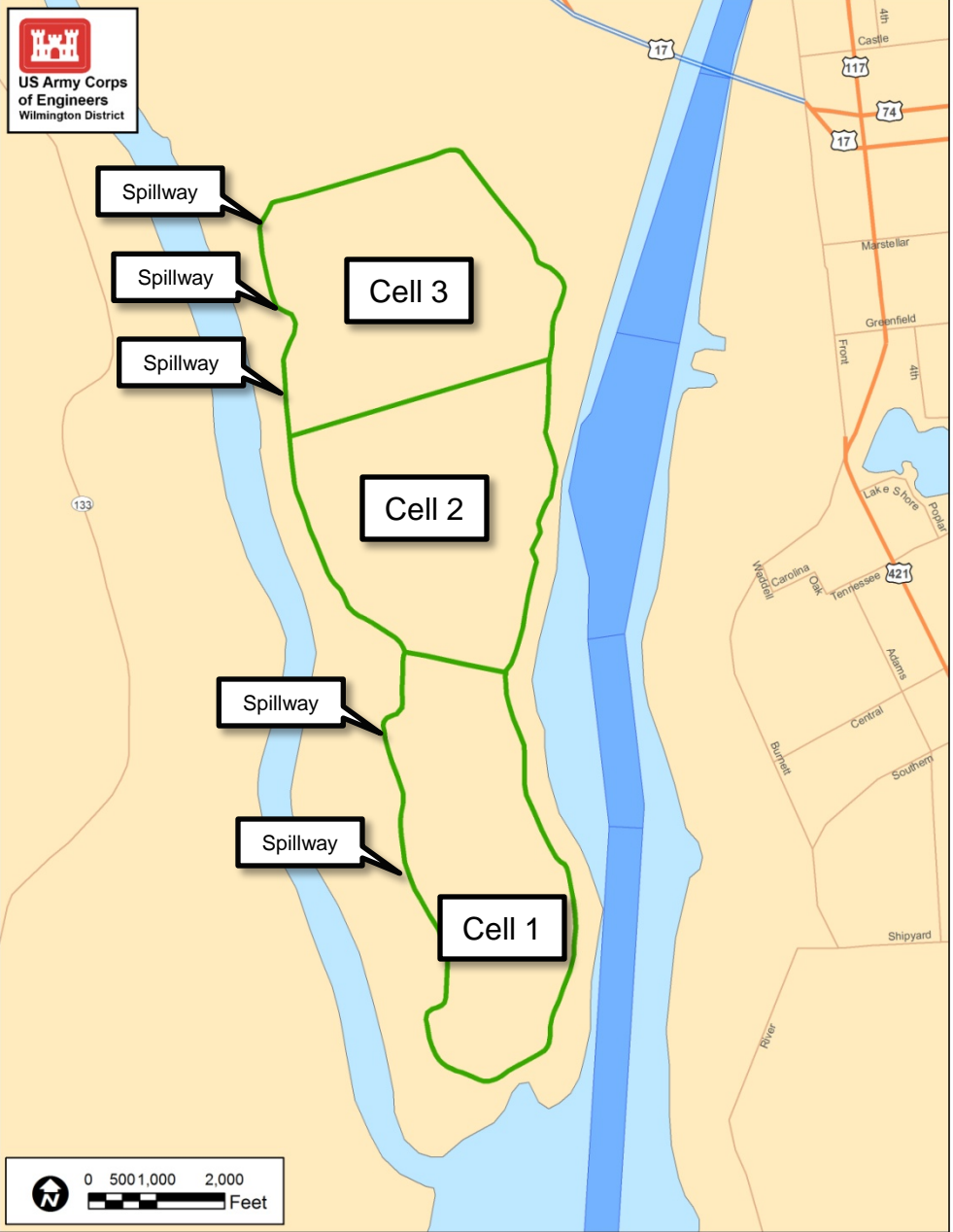
Project:	Morehead City Harbor Ocean Bar - Nearshore Disposal
Dredging Depth:	45 ft (required); + 2 ft
Dredging Width:	400 - 650 ft
Dredging Length:	~ 3.5 miles
Dredging Quantity:	~ 1,500,000 cubic yards
Material Type:	Sand
Placement Area:	Nearshore
Distance to Place Area:	2 – 5 miles
Type of Equipment:	Hopper/Pipeline-Scow
Env. Window:	January 1 – March 31
Reason for Window:	Sea Turtles
Sch. Issue Date:	10/25/2012
Sch. Bid Opening Date:	11/27/2012
Sch. Start Date:	1/1/2013





Project:	Wilmington Harbor, NC – Anchorage Basin & vicinity
Dredging Depth:	42 ft (required); + 2 ft
Dredging Width:	400 - 1200 ft
Dredging Length:	Varies
Dredging Quantity:	~1,500,000 cubic yards
Material Type:	Silt
Placement Areas:	Eagle Island; Bird Islands
Distance to Place Area:	Varies
Type of Equipment:	Pipeline
Env. Window:	
Anchorage Basin:	August 1 – January 31
Bird Islands:	September 1 – March 31
Reason for Window:	Fisheries & Bird Nesting
Est. Start Date:	September 1, 2013
Est. Completion Date:	January 31, 2014
Contract Completion:	January 31, 2014





Project:	Wilmington Harbor, NC – Eagle Island Improvements
Services:	- Cell #1 Raise -Cells #1 & #3 Spillway Replacements
Est. Start Date:	October 30, 2013
Est. Completion Date:	Unknown
Contract Completion:	Unknown





Project:	Atlantic Intracoastal Waterway – Core Creek
Dredging Depth:	12 ft (required); + 2 ft
Dredging Width:	90 ft
Dredging Length:	Varies
Dredging Quantity:	~ 200,000 cubic yards
Material Type:	Silt
Placement Area:	Upland
Distance to Place Area:	Varies
Type of Equipment:	Pipeline
Env. Window:	November 1 – April 30
Est. Start Date:	November 1, 2013
Est. Completion Date:	April 30, 2014



BUILDING STRONG®

Wilmington District Points of Contact

Roger Bullock

(910) 251-4822

roger.d.bullock@usace.army.mil

Bob Keistler

(910) 251-4709

robert.w.keistler@usace.army.mil



BUILDING STRONG®