

NEW ORLEANS DISTRICT DREDGING SCHEDULE FY 2013

Michelle Spraul

Operations Manager

New Orleans District

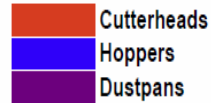


®

US Army Corps of Engineers
BUILDING STRONG®



FY13 Scheduled Cutterhead, Dustpan, and Hopper Dredging Work for the New Orleans District

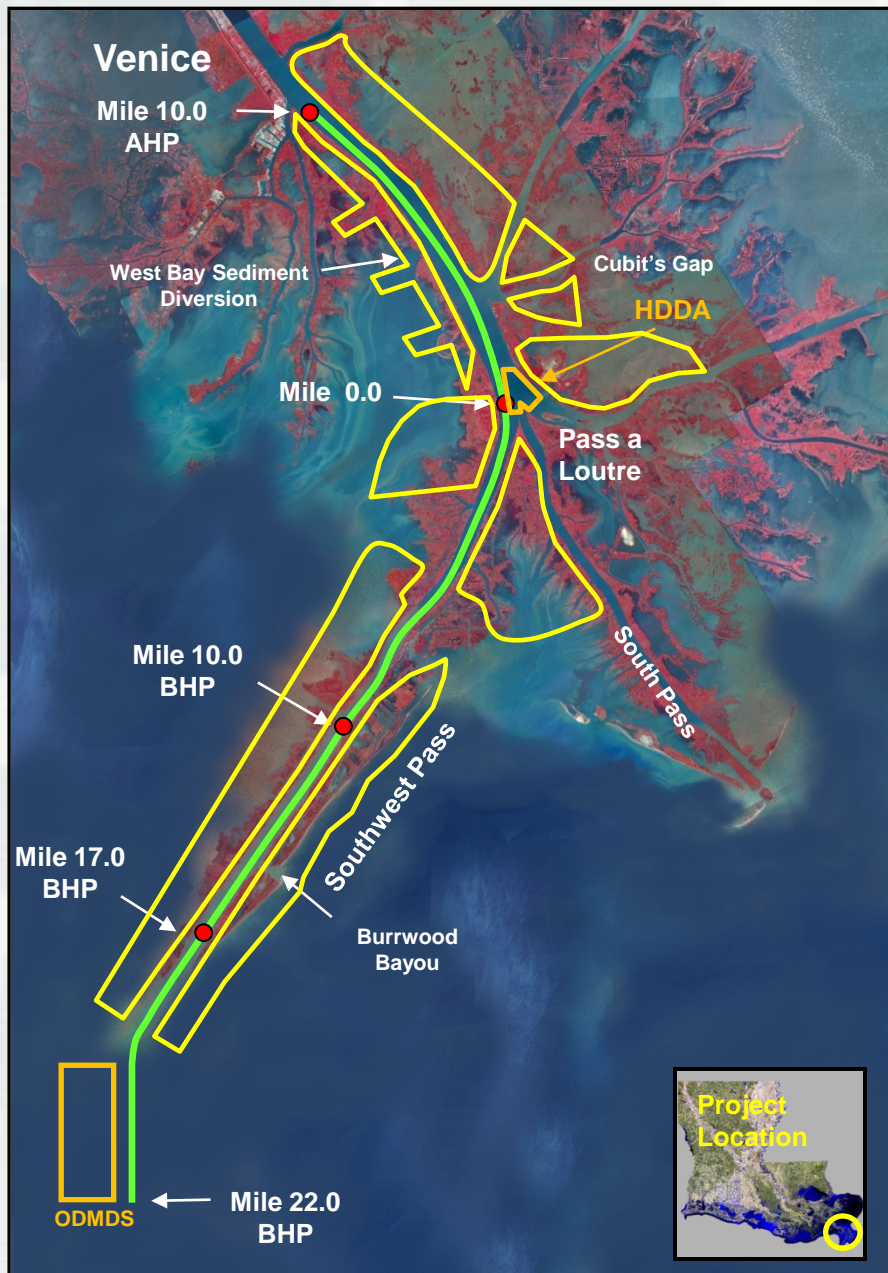


FY 2013

Project	Manager	OCT	NOV	DEC	JAN	FEB	MAR	APR	MAY	JUN	JUL	AUG	SEP
Mississippi River Southwest Pass #1-2013	Spraul												
Mississippi River Southwest Pass #2-2013	Spraul												
Mississippi River Southwest Pass #3-2013	Spraul												
Atchafalaya River, Crew Boat Cut Dredging & Rock Placement	Lowe												
Mississippi River Southwest Pass #4-2013	Spraul												
Calcasieu River Mi. 17 to 34	Falk												
Mississippi River New Orleans Harbor #1-2013	Spraul												
Old River Complex Outflow Channels	Beauvais												
Mississippi River New Orleans Harbor & Houma Nav. #3-2013	Landry/Schneider												
Atchafalaya River Bay, Bar, Horseshoe & Miscellaneous Projects	Lowe												
Atchafalaya Basin, GIWW & Miscellaneous Projects	Lowe/Landry/Beauvais												



BUILDING STRONG®



MISSISSIPPI RIVER

Southwest Pass

Type of Equipment:

Hopper / Cutterhead

Schedule: Based on River Stage

Depth: 45 ft

Width: 600 ft – 750 ft

Quantity: 17M cy (Annual Avg)

Placement Area: Open Water
-HDDA at Head of Passes
-ODMDS

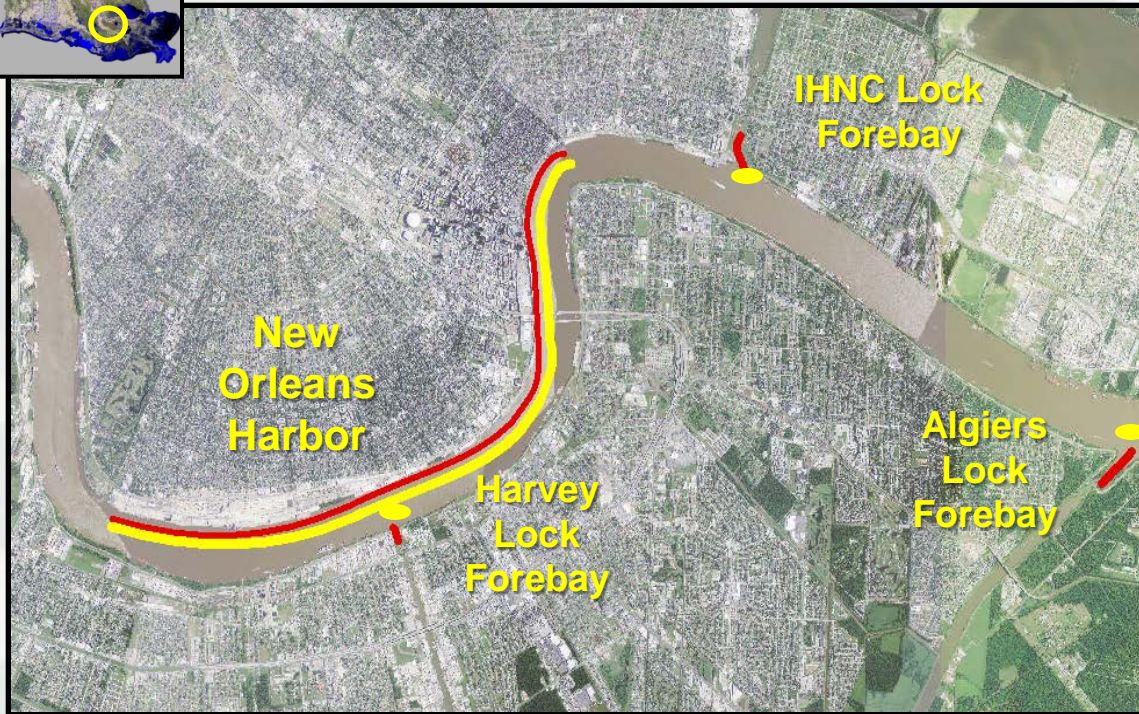
Last Dredged: 2012



MISSISSIPPI RIVER

New Orleans Harbor

Algiers, Harvey & IHNC Lock Forebays



Type of Equipment: Cutterhead

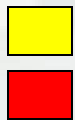
Schedule: Based on River Stage

Depth: Varies by location
15 ft to 35 ft

Quantity: (Annual Avg)
Harbor - 775K cy
Locks - 200K cy

Placement Area: Open Water

Last Dredged: 2012



Open Water Placement

Dredging Region



ATCHAFALAYA RIVER

Crewboat Cut

Channel Stabilization: 1.8 miles of rock along the east bank of Crew Boat Cut Channel.

Crewboat Cut: 20 ft x 400 ft

Type of Equipment: Cutterhead

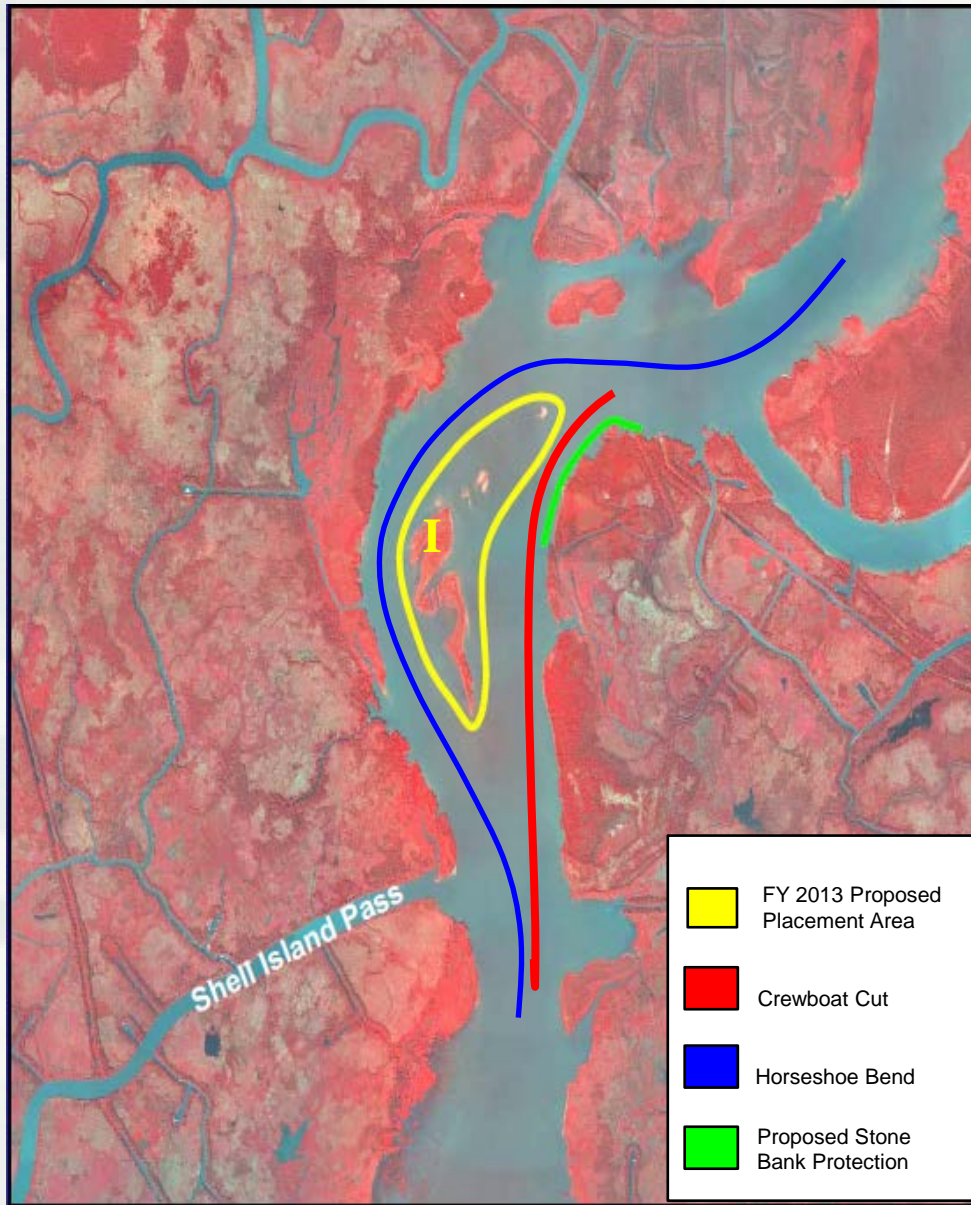
Scheduled: Apr - Jul 2013

Quantity: TBD

Placement Area: Wetland Development & Open Water Island Creation Sites Not finalized

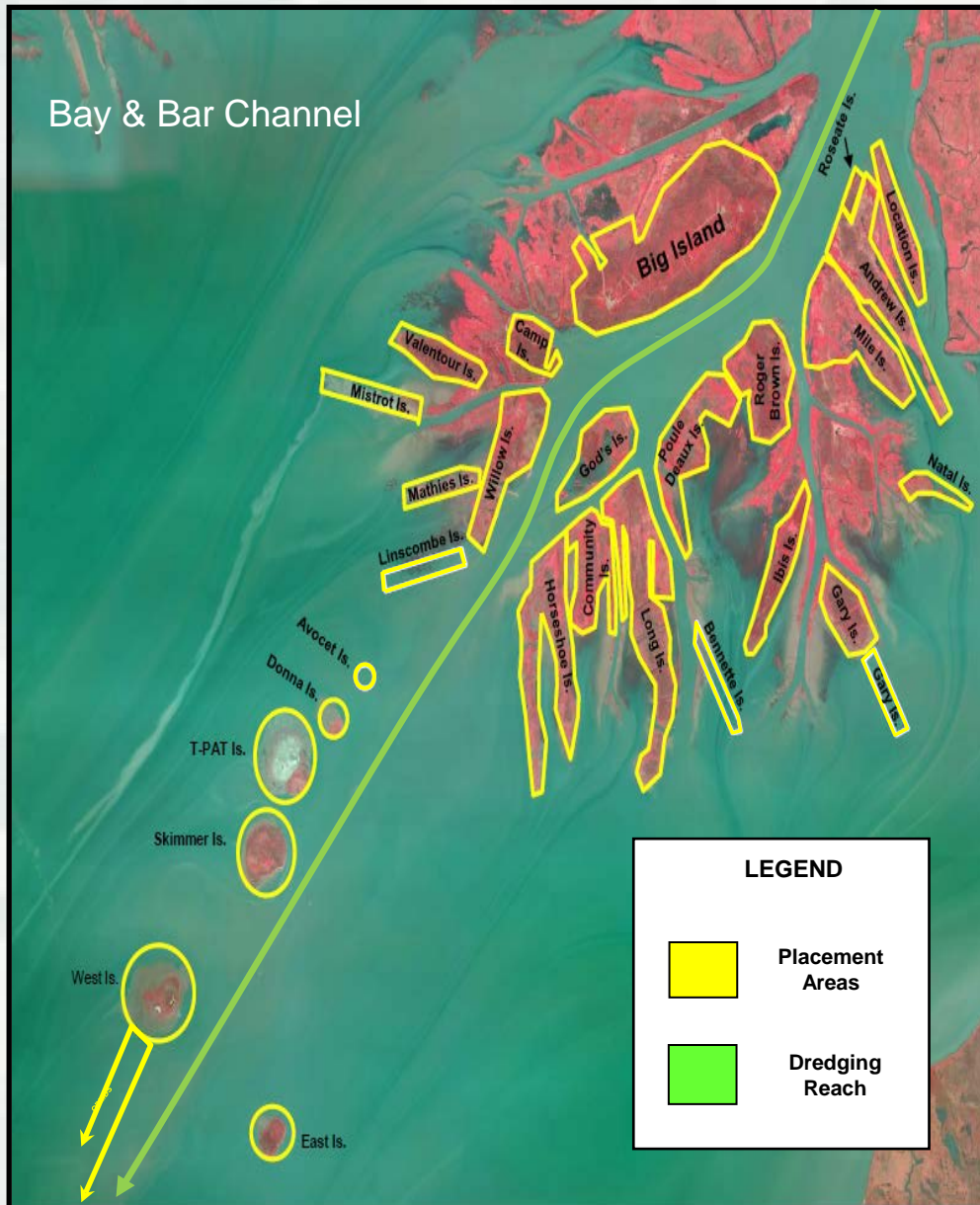
Distance to Placement: 2,500-7,000 ft

Last Dredged: Never



ATCHAFALAYA RIVER

Bay, Bar & Horseshoe



Type of Equipment: Cutterhead

Scheduled: Aug - Sep 2013

Quantity: 5M cy

Bay: 20 ft x 400 ft

Placement Area: Open Water Island
Creation

Distance to Placement: 3,500-19,000 ft

Bar: 20 ft x 400 ft

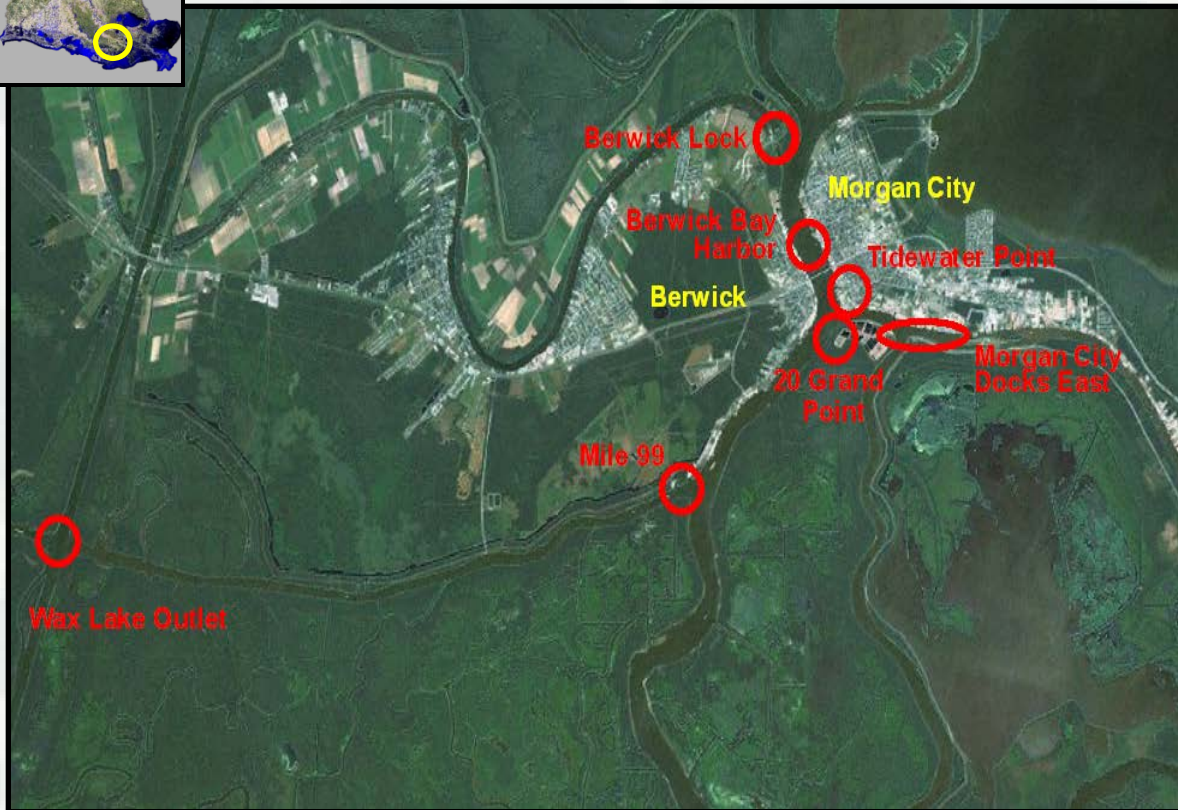
Placement Area: Ocean D/A, Bird Island

Distance to Placement: 5,000 ft

Last Dredged: 2012



ATCHAFALAYA BASIN GIWW & MISC PROJECTS



Type of Equipment: Cutterhead

Schedule: Aug - Sept 2013

Depth: 12 ft to 16 ft

Width: Various

Quantity: 1M cy (Annual Avg)

Placement Areas:

Open Water

Sand Pits (Berwick Harbor)

Last Dredged: 2012

Dredging Locations: Berwick Bay Harbor, Berwick Lock, Tidewater Point, 20 Grand Point, Morgan City Docks East, Mile 99, Wax Lake Outlet
(continued on next slide)

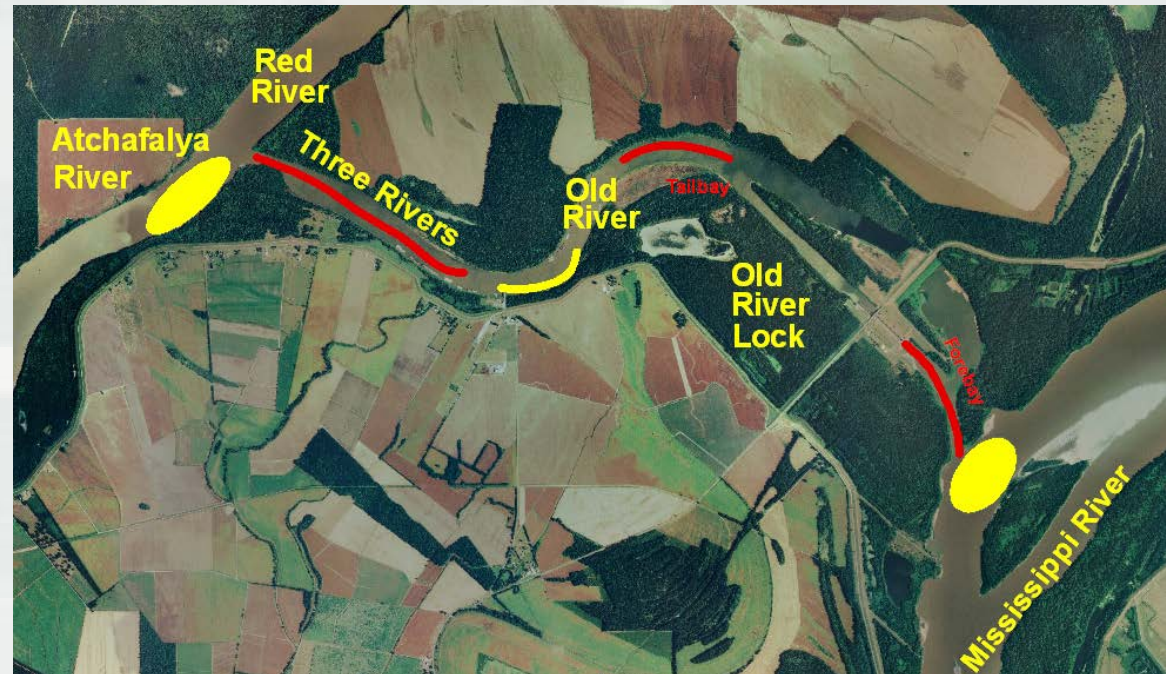
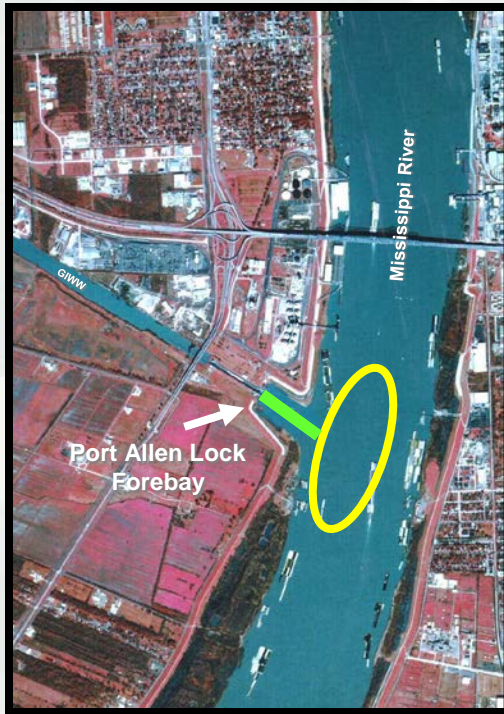


Operations Managers: Atchafalaya, Mike Lowe 504-862-1682
GIWW, Vic Landry 504-862-2407
Old River, Russell Beauvais 225-492-2169

BUILDING STRONG®

ATCHAFALAYA BASIN GIWW & MISC PROJECTS (continued)

Dredging Locations: Port Allen Lock Forebay, Baton Rouge Harbor (Devil's Swamp), Old River Lock Forebay & Tailbay and Three Rivers



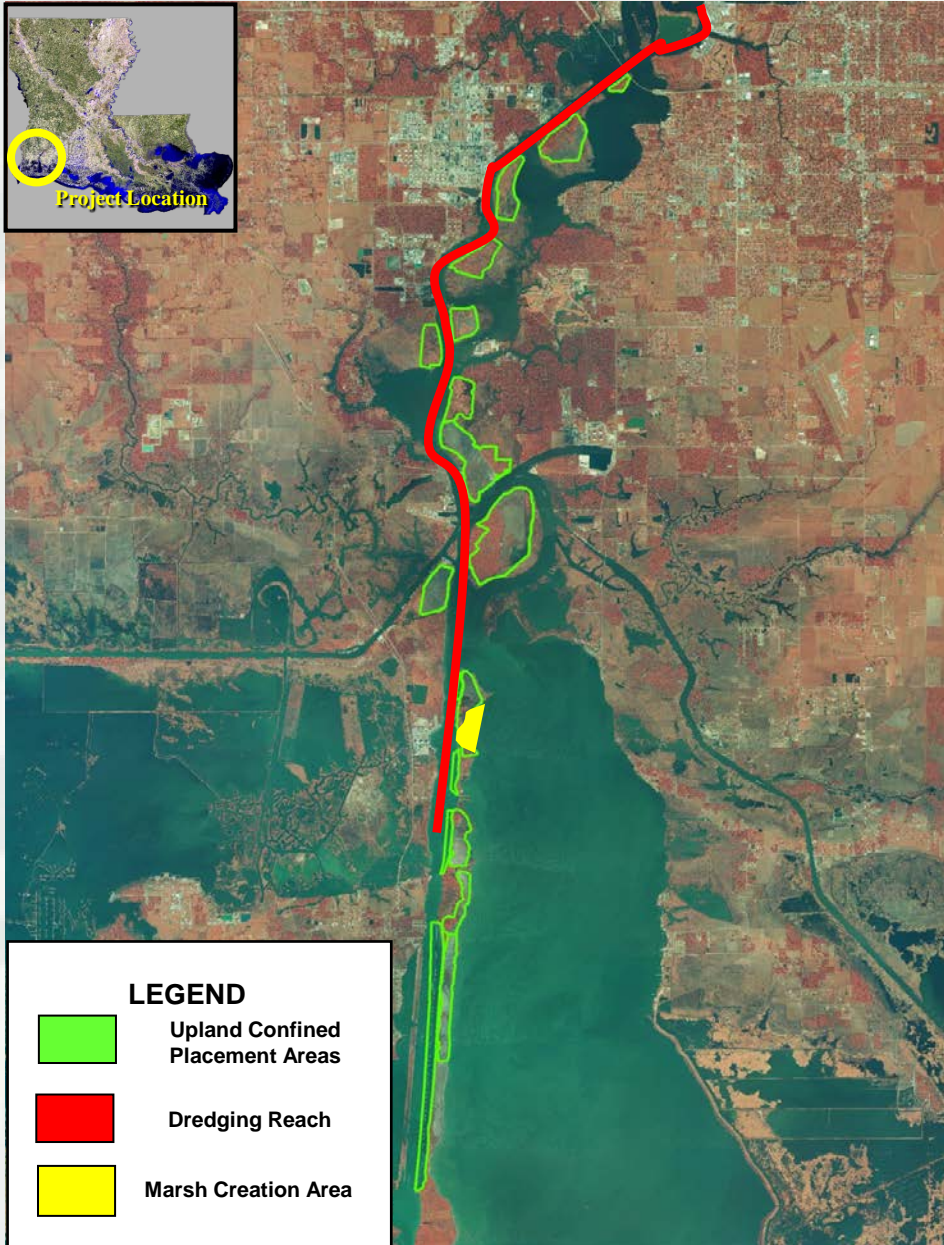
Open Water Placement

Dredging Region



Operations Managers: Atchafalaya, Mike Lowe 504-862-1682
GIWW, Vic Landry 504-862-2407
Old River, Russell Beauvais 225-492-2169

BUILDING STRONG®



CALCASIEU RIVER

Vicinity Miles 17 – 34

Type of Equipment: Cutterhead

Schedule: May - Sep 2013

Depth: 40 ft

Width: 400 ft

Quantity: 4M

Placement Area: Upland CDF's, with overflow BU in the lake

Last Dredged: 2011



Operations Manager: Tracy Falk 504-862-2971

BUILDING STRONG®

HOUMA NAVIGATION CANAL

New Orleans Harbor #3-2013

Terrebonne Bay & Cat Island Pass

Type of Equipment: Cutterhead

Schedule: Aug 2013

Depth: 17 ft – 22 ft

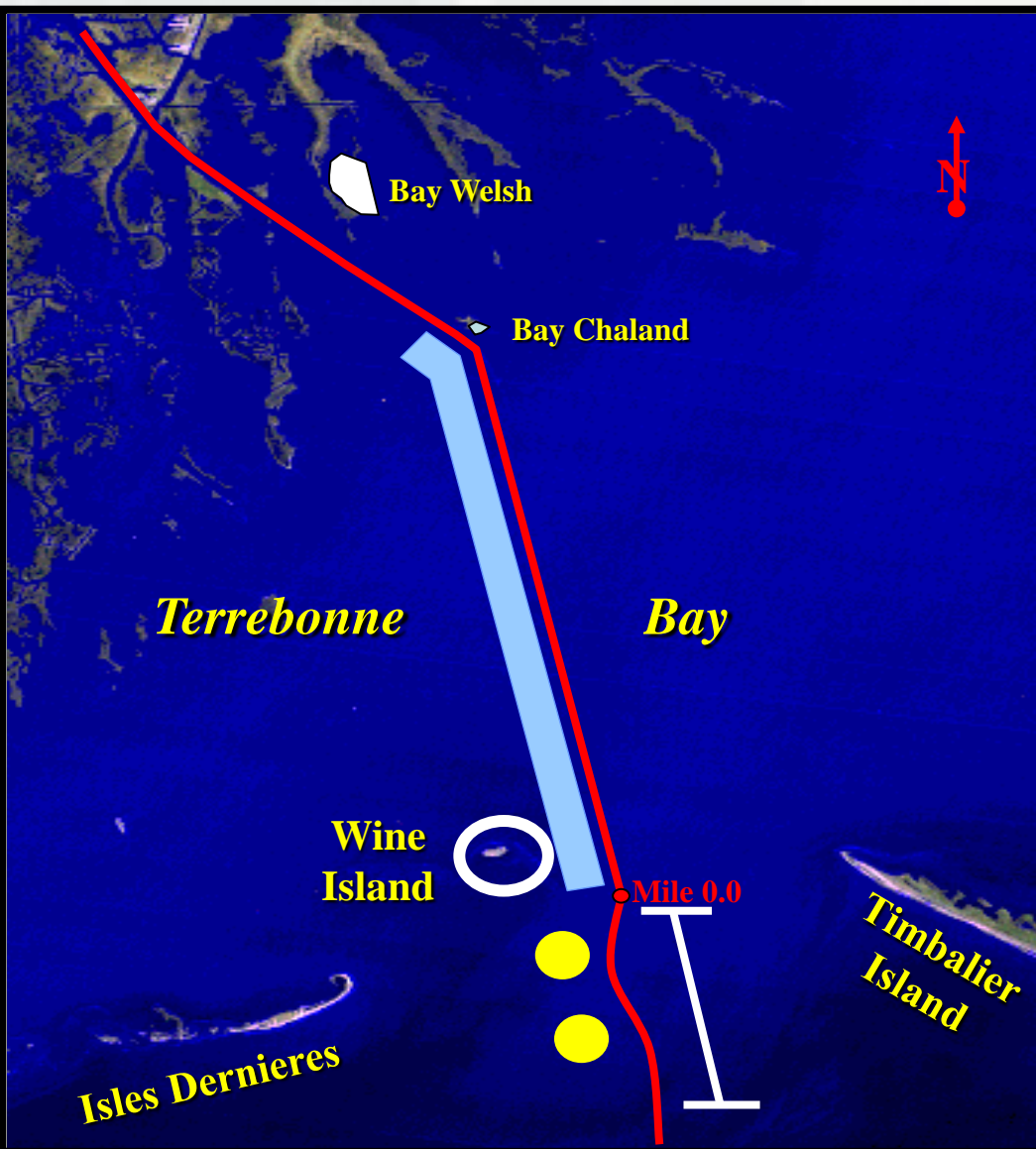
Width: 150 ft – 300 ft

Quantity: 1.5 M cubic yards

Placement Area: Open Water
/SPD/Barrier Island Restoration

Distance to Placement Area:
2,000 ft – 5 Mi.

Last Dredged: Oct 2012



— Houma Navigation Canal
— Open Water Disposal Area

● Single Point
Discharge Sites

Operations Manager: Donald Schneider 504-862-1828

BUILDING STRONG®

OLD RIVER CONTROL COMPLEX

Outflow Maintenance

Type of Equipment: Cutterhead

Schedule: Jul 2013 – Feb 2014

Depth: 10 ft

Width: 450 ft

Quantity: 4.5M cubic yards

Placement Area:

Old River Outflow Channels and Red River

Distance to Placement Area:

2,000 ft – 3 Miles

Last Dredged: Initial Construction:

Low Sill Outflow Channel 1960s.

Auxiliary Outflow Channel 1980s.

