

**PORT HOUSTON:**

# ACCELERATING HOUSTON SHIP CHANNEL EXPANSION Project 11 Update



**Western Dredging Association**  
2023 Dredging Summit & Expo  
Wednesday, July 19, 2023

Visit: [www.expandthehoustonshipchannel.com](http://www.expandthehoustonshipchannel.com)



PORT HOUSTON

# WHO WE ARE

We manage eight public terminals — including two container facilities we operate and six others for which we're the landlord

As the advocate and a strategic leader of the Houston Ship Channel, we support the more than 200 facilities and the neighboring communities along it by working with the federal government

We facilitate vital commerce through the port that helps keep the local and state economy moving



PORT HOUSTON

# THE ENERGY CAPITAL OF THE WORLD

- The Houston Ship Channel is home to the largest **petrochemical** complex in the U.S.
- Houston also has the largest **energy pipeline and storage** network in the U.S.
- **500 million barrels** of liquid storage along the Houston Ship Channel
- A total of **74% of cargo** on Houston Ship Channel is liquid bulk




Visit: [www.expandthehoustonsipchannel.com](http://www.expandthehoustonsipchannel.com)



# HOUSTON'S PORT IS NUMBER ONE

- **#1** in exports of Propane and Ethane
- **#1** in exports of Butanes
- **#1** in production and exports of Ethylene, Propylene, Butylene and Butadiene
- **#1** export state
- **#1** in exports of Petroleum and Petroleum Products
- **#1** in resin exports with 58% market share
- **#1** container port in the U.S. Gulf Coast
- **#1** in deep water vessel traffic



**#1**

in waterborne  
tonnage



PORT HOUSTON

# BIG GROWTH = BIG OPPORTUNITIES

**Investment of approximately  
\$800M landside in past 5 years**

- Rehabilitation of wharves and yards
- Added container storage space
- Expansion of Barbours Cut entrance
- Improved traffic flow
- 53 new Rubber Tire Gantry cranes
- 6 new STS cranes



PORT HOUSTON

# HOUSTON SHIP CHANNEL, A FEDERAL WATERWAY



**1.35**  
**MILLION**  
JOBS IN TEXAS



**3.2**  
**MILLION**  
JOBS NATIONWIDE



**\$339**  
**BILLION**  
ECONOMIC IMPACT  
IN TEXAS

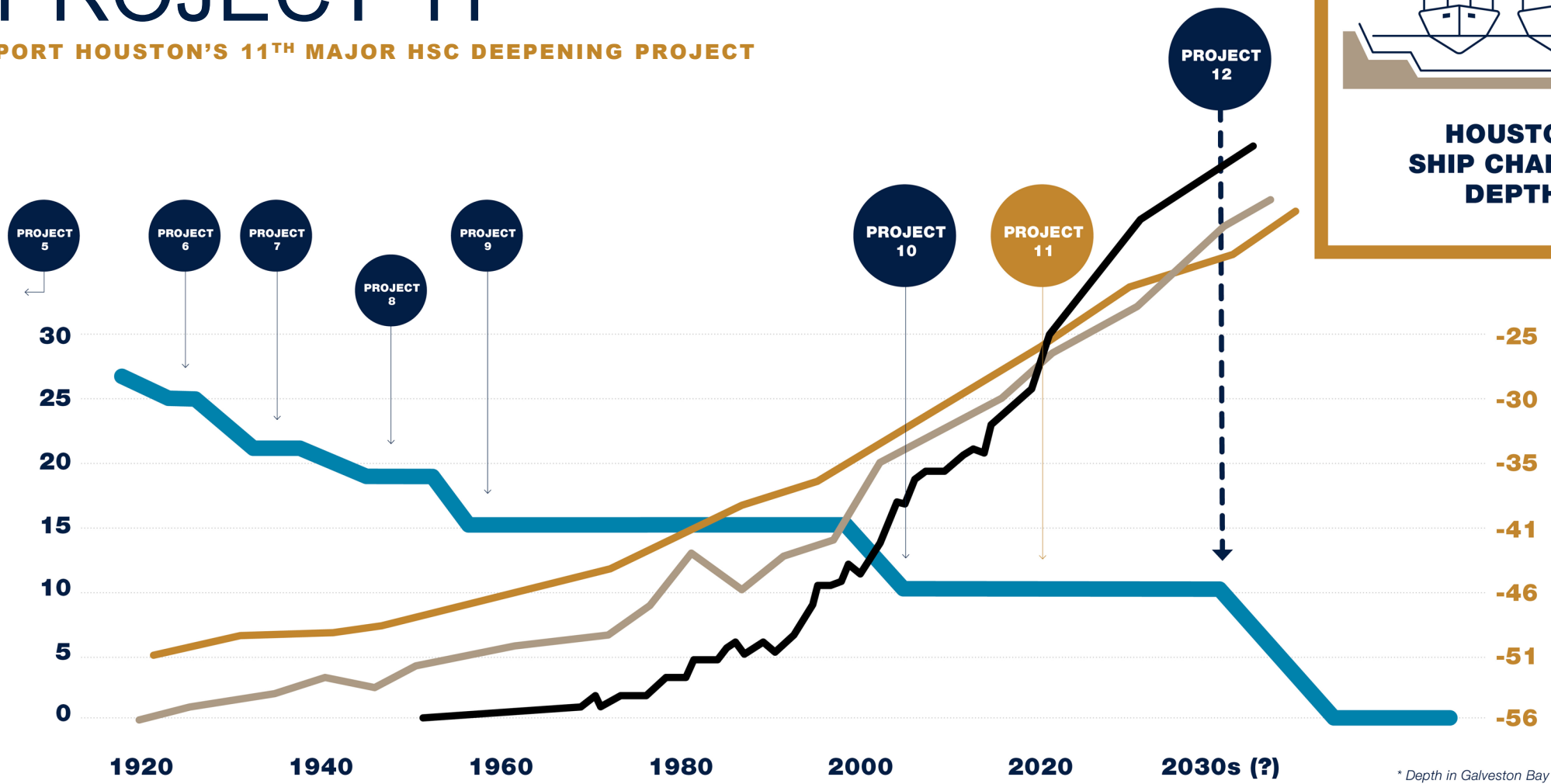
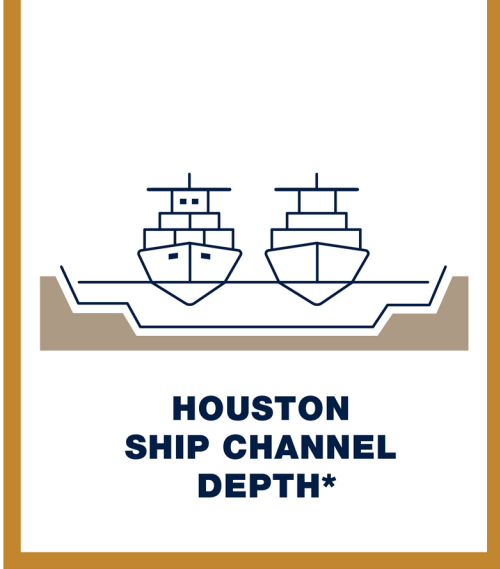


**\$906**  
**BILLION**  
ECONOMIC IMPACT  
ACROSS THE U.S.



# PROJECT 11

PORT HOUSTON'S 11<sup>TH</sup> MAJOR HSC DEEPENING PROJECT



■ Ship Channel Depth, Feet (right axis)    
 ■ Total POH Cargo x 10 Millions (left axis)    
 ■ Texas Population, Millions (left axis)    
 ■ Container TEU's x 100,000's (left axis)

\* Depth in Galveston Bay



# PROJECT 11

## RETHINKING THE TRADITIONAL PROCESS

1A

### Bolivar Roads to Redfish

- Approximately 11.5 miles in length
- Widen Channel to 700 feet
- Bend easing
- Construct New Bird Island
- Mitigate for oyster habitat loss

1B

### Redfish to Bayport Ship Channel

- Approximately 8.3 miles in length
- Widen Channel to a minimum of 700 feet
- Bend easing
- Construct marshes and three bird islands in Galveston Bay
- Mitigate for oyster habitat loss
- Currently not in the proposed federal plan, so must be built by local interests

1C

### Bayport Ship Channel to Barbours Cut

- Approximately 5 miles in length
- Widen Channel to 700 feet
- Construct additional marshes
- Mitigate for oyster habitat loss
- Currently not in the proposed federal plan, so must be built by local interests

2

### Bayport Ship Channel

- Approximately 4 miles in length
- Widen Channel to approximately 455 feet
- Construct marshes and three bird islands in Galveston Bay
- Mitigate for oyster habitat loss
- Modify channel entrance to reduce shoaling

3

### Barbours Cut Ship Channel

- Widen Channel to approximately 455 feet
- Construct additional marshes on Atkinson Island
- Modify channel entrance

4

### Boggy Bayou (BW 8) to Sims Bayou

- Widen Channel to approximately 530 feet through Greens Bayou confluence
- Deepen from existing 41 feet to 46.5 feet from Boggy Bayou to Hunting Bayou (last Turning Basin before reaching Washburn Tunnel)

5

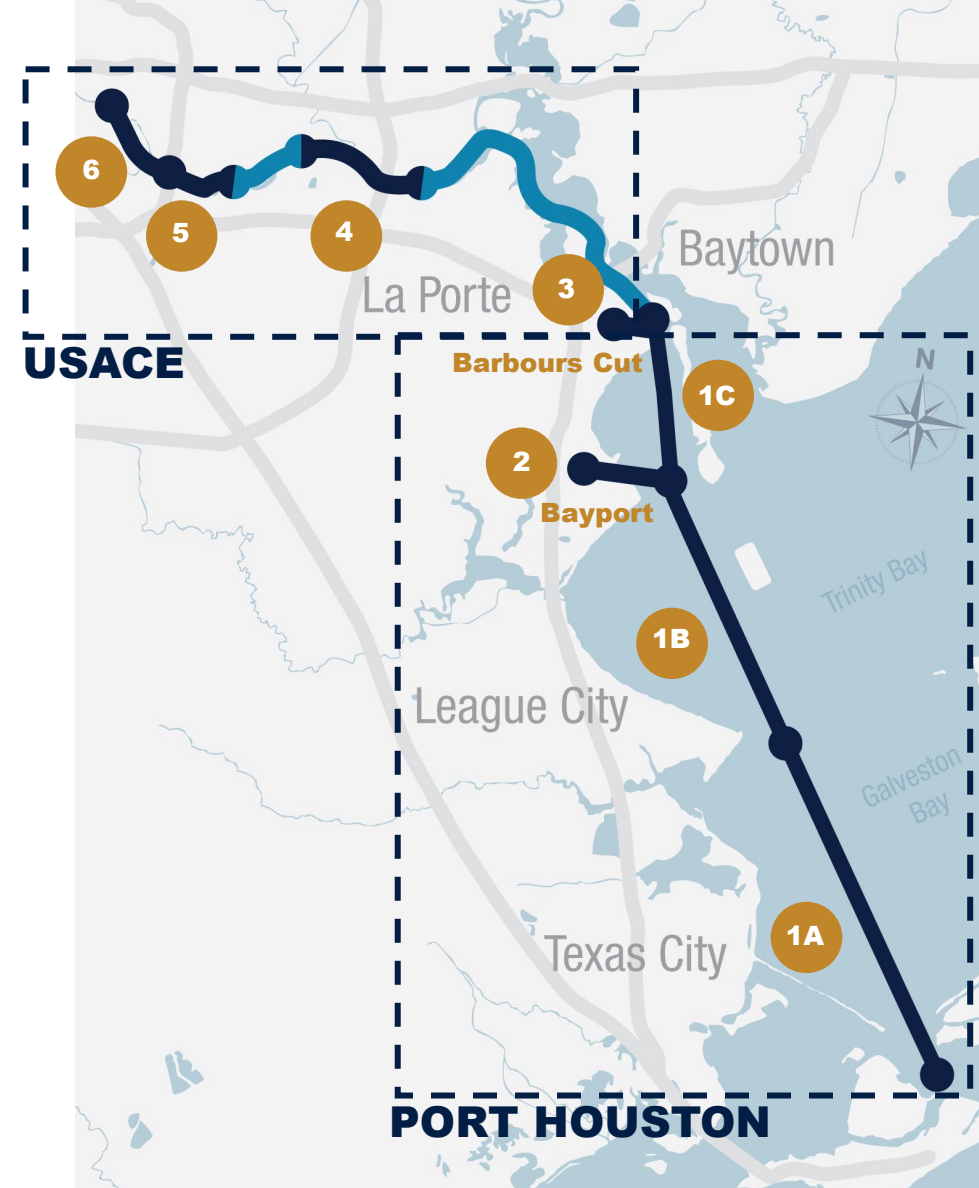
### Sims Bayou to IH 610

- Deepen from existing 37 feet to 41.5 feet

6

### IH 610 to Turning Basin

- Deepen from existing up to 41.5 feet
- Increase Brady Island Turning Basin



 No work planned in these areas



PORT HOUSTON

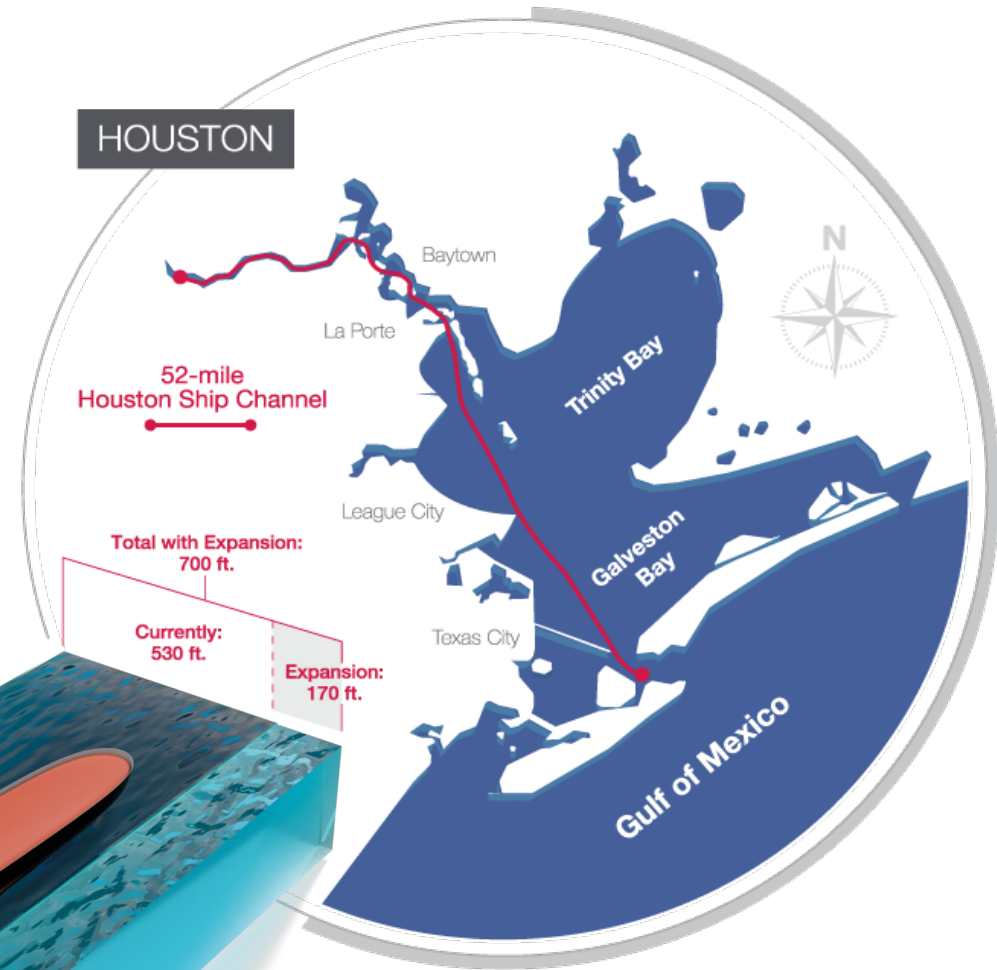


# PROJECT 11

## GALVESTON BAY CHANNEL TEMPLATE



Currently, an approximately 100 ft. bypass makes for nearly impossible and dangerous maneuvers.



52-mile  
Houston Ship Channel

Total with Expansion:  
700 ft.

Currently:  
530 ft.

Expansion:  
170 ft.



increase in avg. LPG  
vessel length from  
2007 to 2018<sup>2</sup>



increase in avg.  
container ship length  
from 2006 to 2018<sup>2</sup>

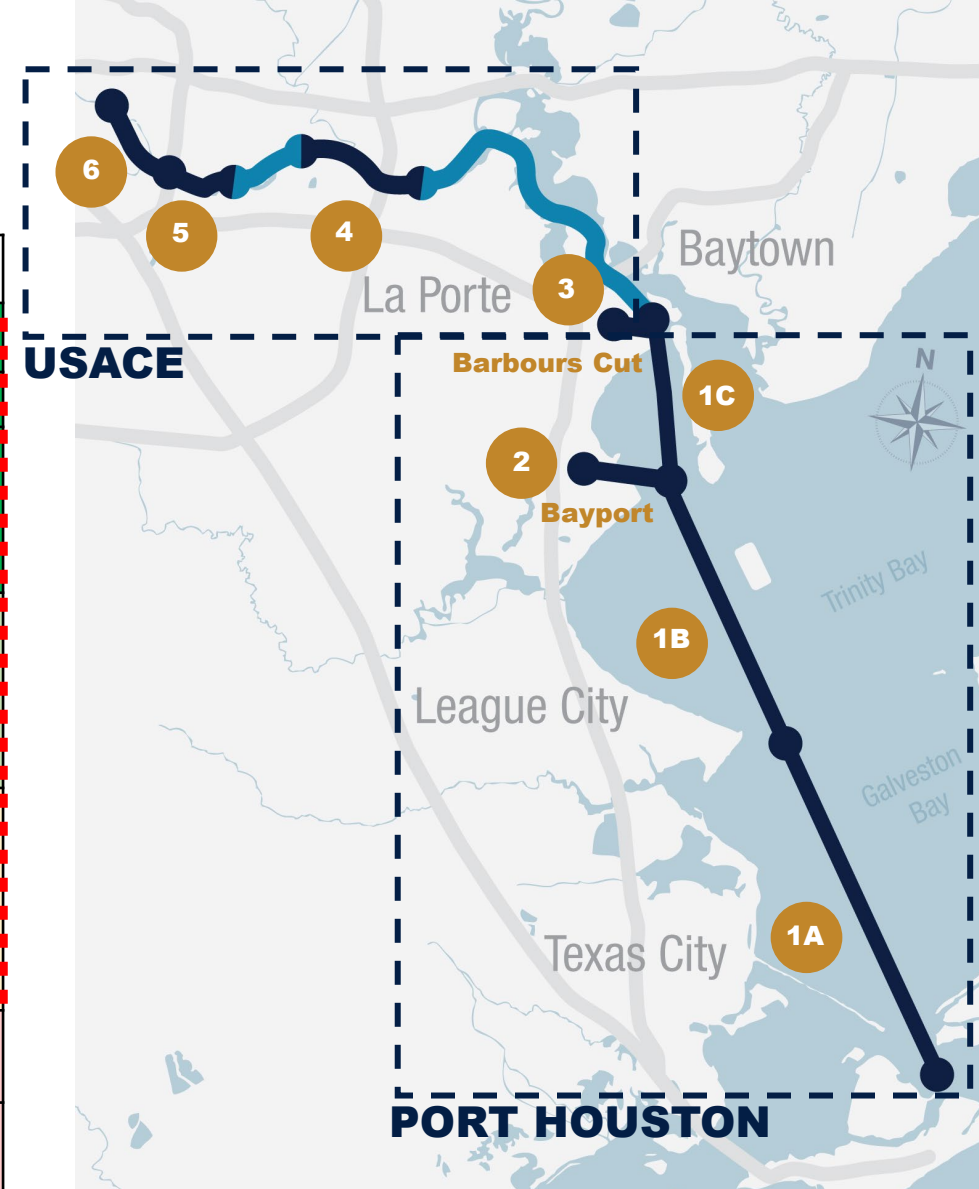
Sources:  
1. Greater Houston Port Bureau  
2. TxDOT Maritime



# PROJECT 11

## TENTATIVE PROCUREMENT AND CONSTRUCTION SCHEDULE

	Package	Segment	Advertise		Construction
Completed	1	1A	Aug 2021	USACE	Jan - Oct 2022
	2	4	Feb 2021	Port	Jun 2021 - Jun 2022
	Abandoned Pipeline Removal	1B, 1C, 2	Aug 2021	Port	Jan - Jul 2022
Under Contract	3/4A	1A	Jul 2021	Port	Feb 2022 - Mar 2023
	4B/5	1B, 1C, 2	Nov 2021	Port	Oct 2022 - Sept 2024
Funded	6	1C	Oct 2023	Port	Jan - Dec 2024
	7	3	Sept 2023	USACE	Mar 2024 - Sept 2026
	8 – E2C	4	Oct 2023	USACE	Jan - Dec 2025
Pending Federal Appropriations	8 – BW8	4	Apr 2024	USACE	Jul 2024 - Jul 2025
	9	4	Mar 2025	USACE	Aug 2025 - Aug 2026
	10, 11	5, 6	Sept 2024	USACE	Feb 2025 - Feb 2026
	12	5, 6	Nov 2025	USACE	Apr - Dec 2026



 No work planned in these areas



# Completed.



PORT HOUSTON™

# SEGMENT 1A. Dollar Reef.

PACKAGE 1. DESIGN-CONSTRUCTION PACKAGE UPDATE

Advertisement	Construction	Contractor
AUG 2021	USACE JAN – OCT 2022	Wiipica QRI JV



COMPLETE.  
Dollar Reef Oyster Mitigation.



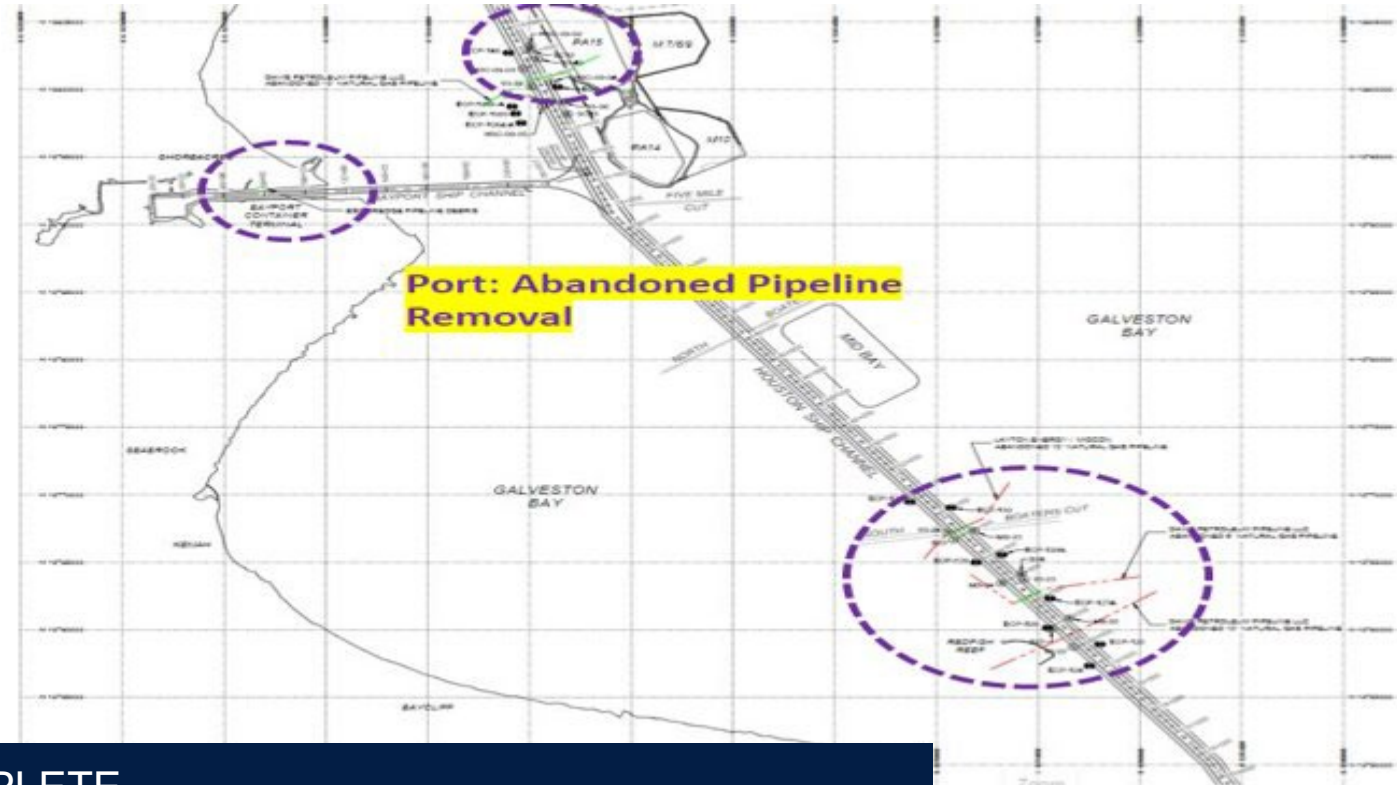
 No work planned in these areas



# SEGMENT 1B, 1C, 2. Abandoned Pipelines

DESIGN-CONSTRUCTION PACKAGE UPDATE

Advertisement	Construction	Contractor
AUG 2021	PHA JAN – JUL 2022	Orion



 No work planned in these areas



COMPLETE.  
Pre-Dredge Abandoned Pipeline Removal.

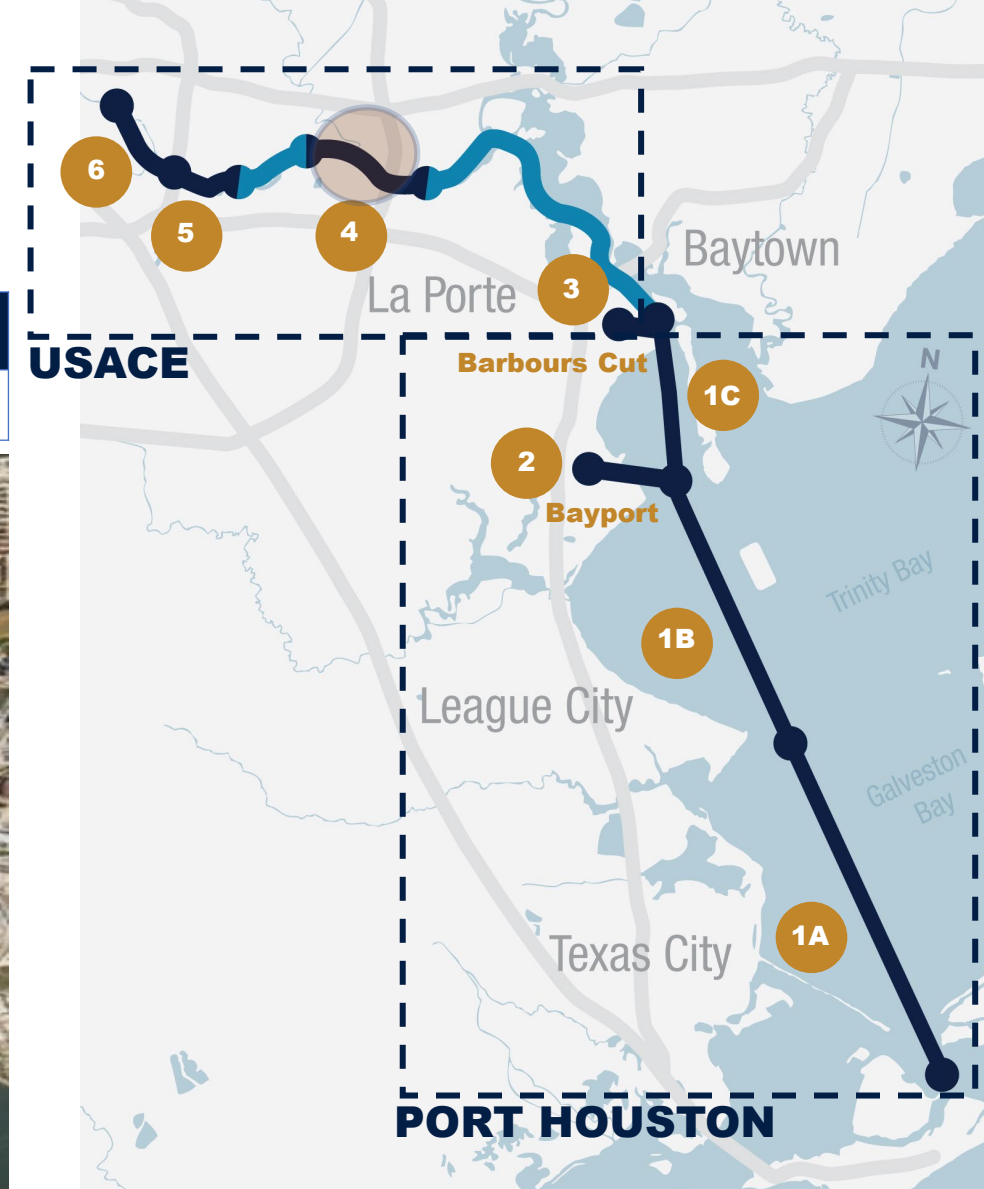
# SEGMENT 4. Beltway 8.

PACKAGE 2. DESIGN-CONSTRUCTION PACKAGE UPDATE

Advertisement	Construction	Contractor
FEB 2021	PHA	R.T. Ellis



COMPLETE. Beltway 8 Site Clearing, Grubbing, and Concrete Demolition.



 No work planned in these areas



# Under Contract.



PORT HOUSTON™

# SEGMENT 1A. Bolivar-Redfish.

PACKAGE 3/4A. DESIGN-CONSTRUCTION PACKAGE UPDATE

Advertisement	Construction	Contractor
JUL 2021	PHA	GLDD



ONGOING. Bolivar Roads to Redfish. Long Bird Island (1.7 MCY) and ODMDS (1.9 MCY).



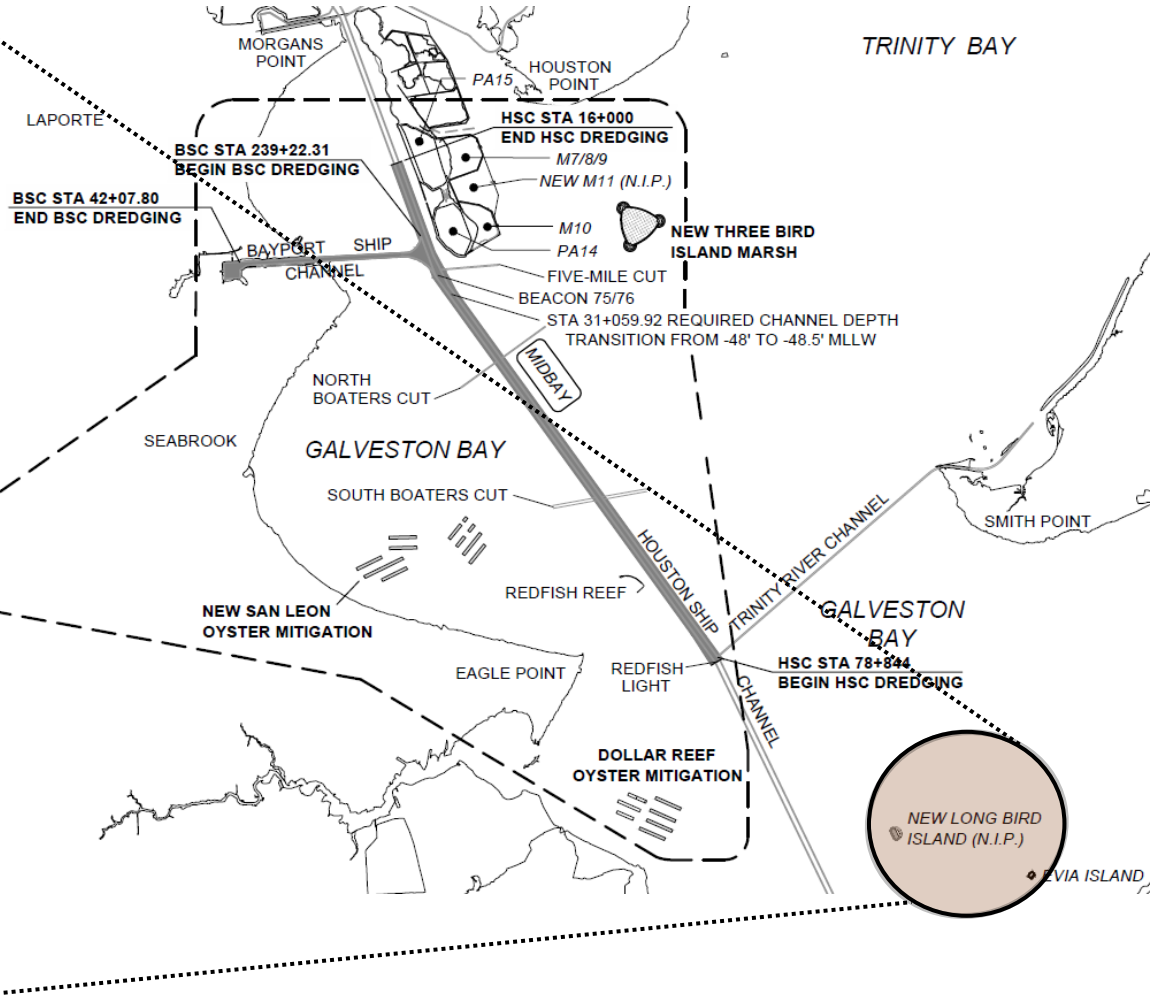
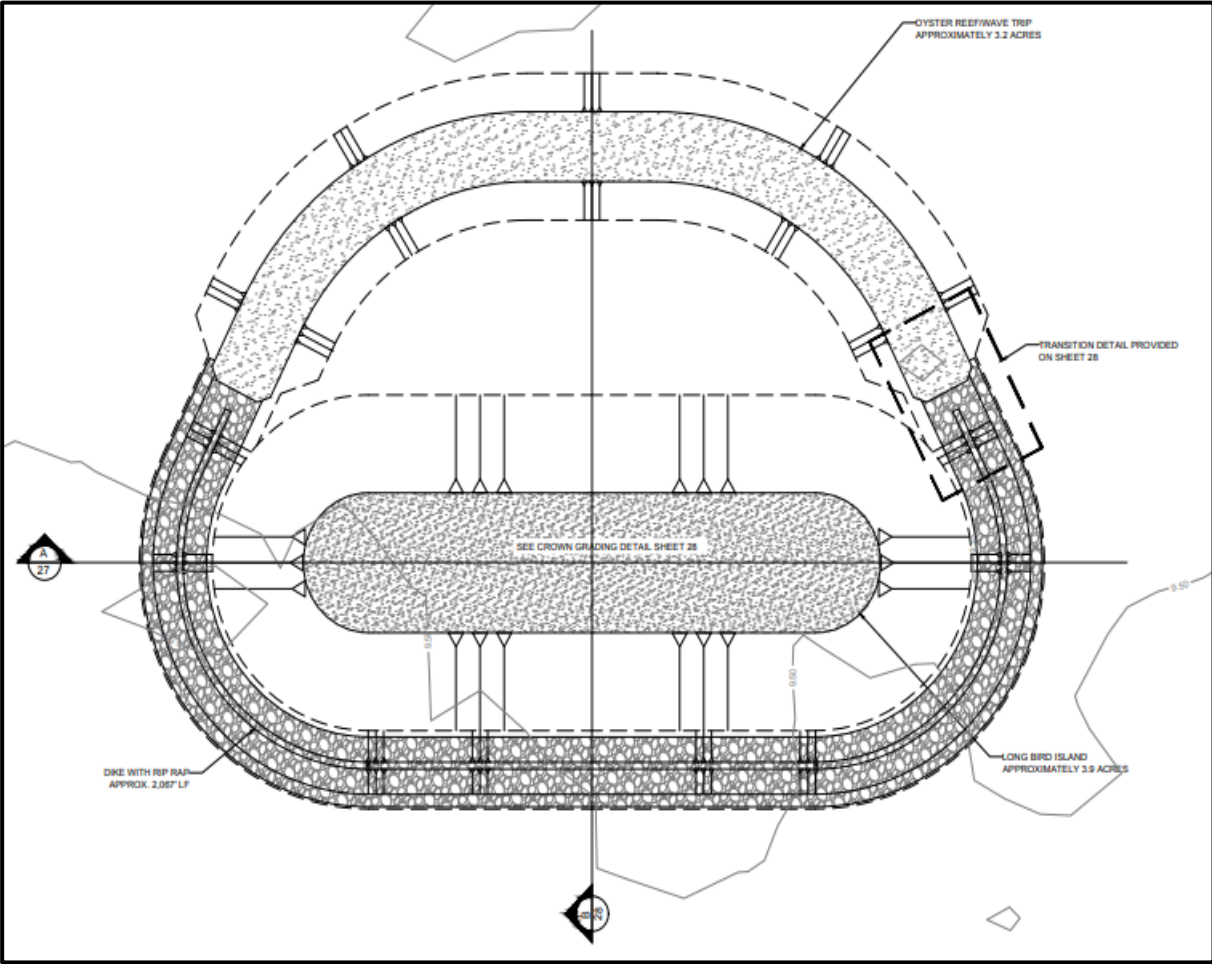
— No work planned in these areas





# SEGMENT 1A. Bolivar-Redfish.

PACKAGE 3/4A. DESIGN-CONSTRUCTION PACKAGE UPDATE



ONGOING. Bolivar Roads to Redfish. Long Bird Island (1.7 MCY) and ODMDS (1.9 MCY).



PORT HOUSTON

# SEGMENT 1A. Bolivar-Redfish.

PACKAGE 3/4A. DESIGN-CONSTRUCTION PACKAGE UPDATE



ONGOING. Bolivar Roads to Redfish. Long Bird Island (1.7 MCY) and ODMDS (1.9 MCY).



# SEGMENT 1A. Bolivar-Redfish.

PACKAGE 3/4A. DESIGN-CONSTRUCTION PACKAGE UPDATE



November 2022



January 2023

ONGOING. Bolivar Roads to Redfish. Long Bird Island (1.7 MCY) and ODMDS (1.9 MCY).



PORT HOUSTON

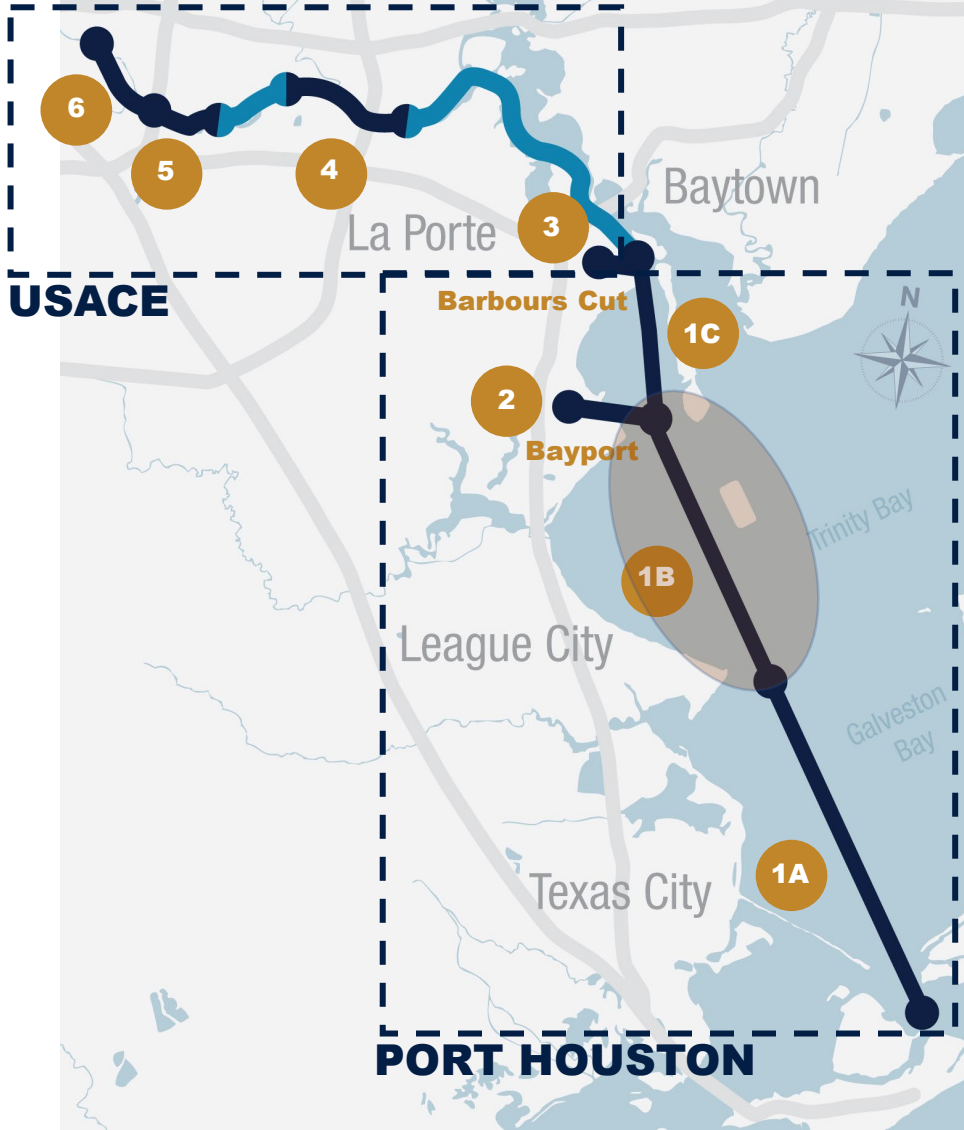
# SEGMENT 1B, 2, 1C. Redfish-Bayport.

PACKAGE 4B/5 (MECHANICAL). DESIGN-CONSTRUCTION PACKAGE UPDATE

Advertisement	Construction	Contractor
NOV 2021	PHA	OCT 2022 – DEC 2023
		Curtin



ONGOING. Redfish to Bayport. San Leon and Dollar Reef Oyster Mitigation (1.5 MCY) & ODMDS (3.8 MCY).



No work planned in these areas



PORT HOUSTON

# SEGMENT 1B, 2, 1C. Redfish-Bayport.

PACKAGE 4B/5 (HYDRAULIC). DESIGN-CONSTRUCTION PACKAGE UPDATE

Advertisement	Construction	Contractor
NOV 2021	PHA	JAN 2023 – SEP 2024
		Weeks



ONGOING. Redfish to Bayport.  
Three Bird Island Marsh Complex (7.9 MCY).



 No work planned in these areas



# Funded.

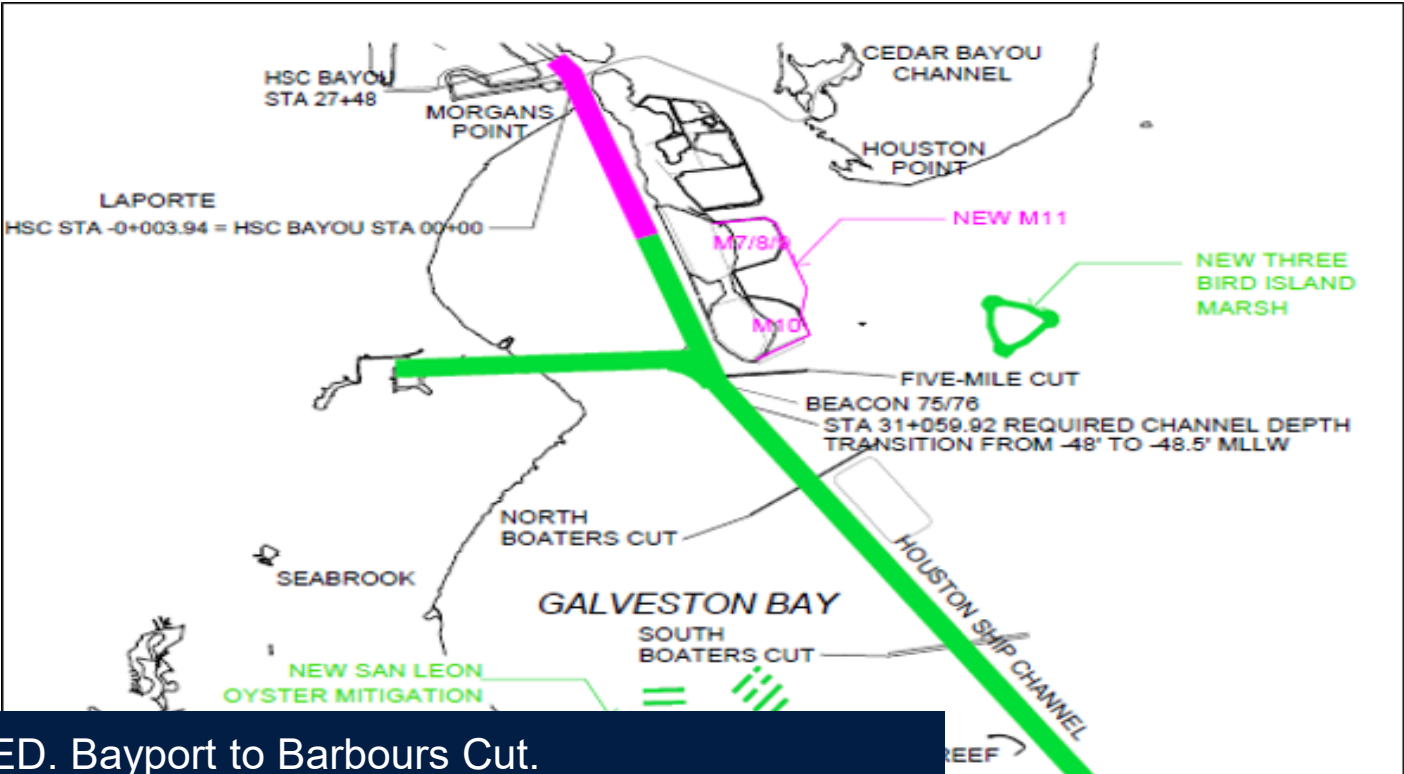


PORT HOUSTON™

# SEGMENT 1C. Bayport-Barbours.

PACKAGE 6. DESIGN-CONSTRUCTION PACKAGE UPDATE

Advertisement		Construction		Contractor
OCT 2023	PHA	JAN – DEC 2024		TBD



FUNDED. Bayport to Barbours Cut.  
3.2 MCY M11 Beneficial Use Site.



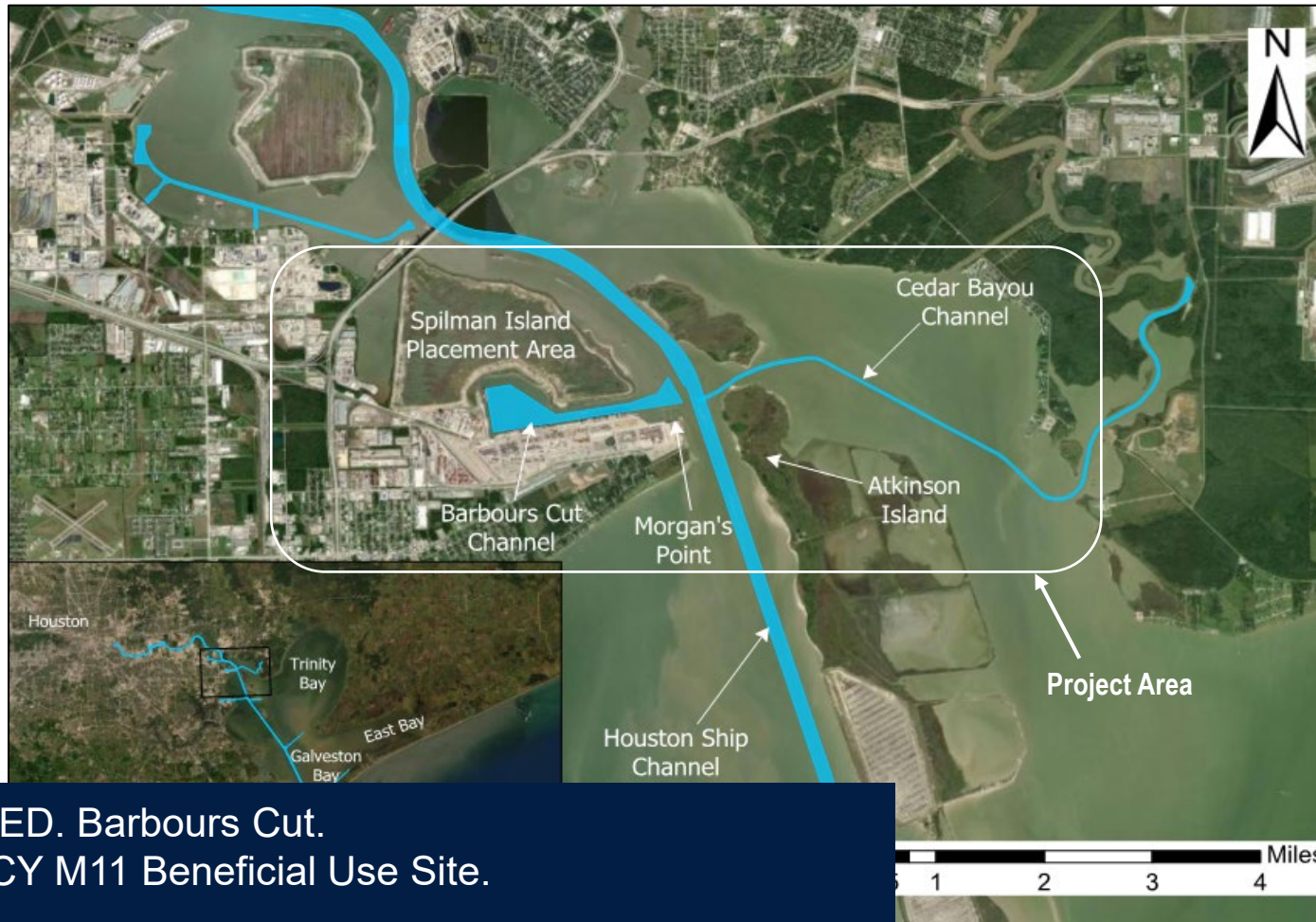
No work planned in these areas



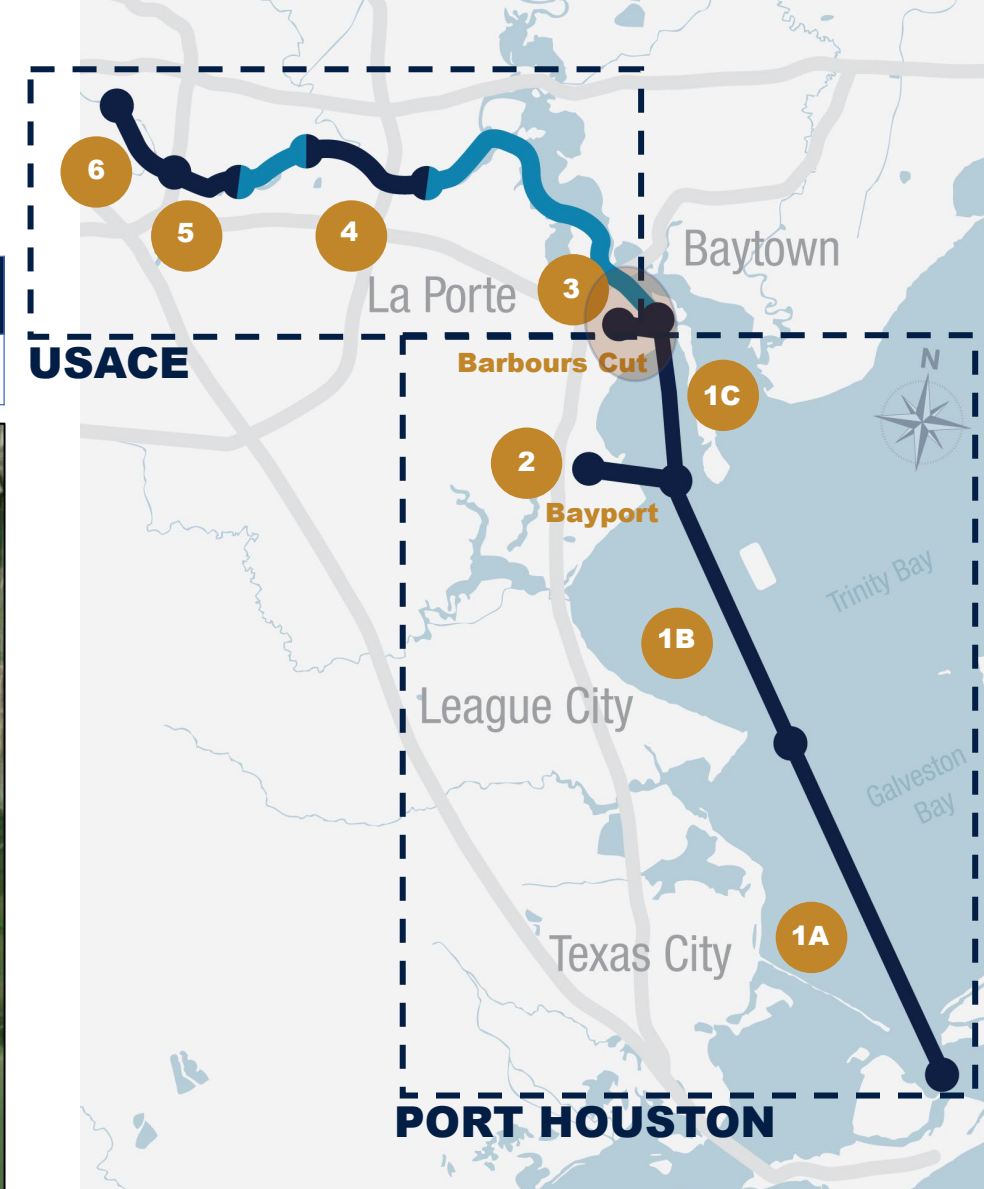
# SEGMENT 3. Barbours Cut.

PACKAGE 7. DESIGN-CONSTRUCTION PACKAGE UPDATE

Advertisement	Construction	Contractor
SEP 2023	USACE	TBD



FUNDED. Barbours Cut.  
2.8 MCY M11 Beneficial Use Site.



 No work planned in these areas

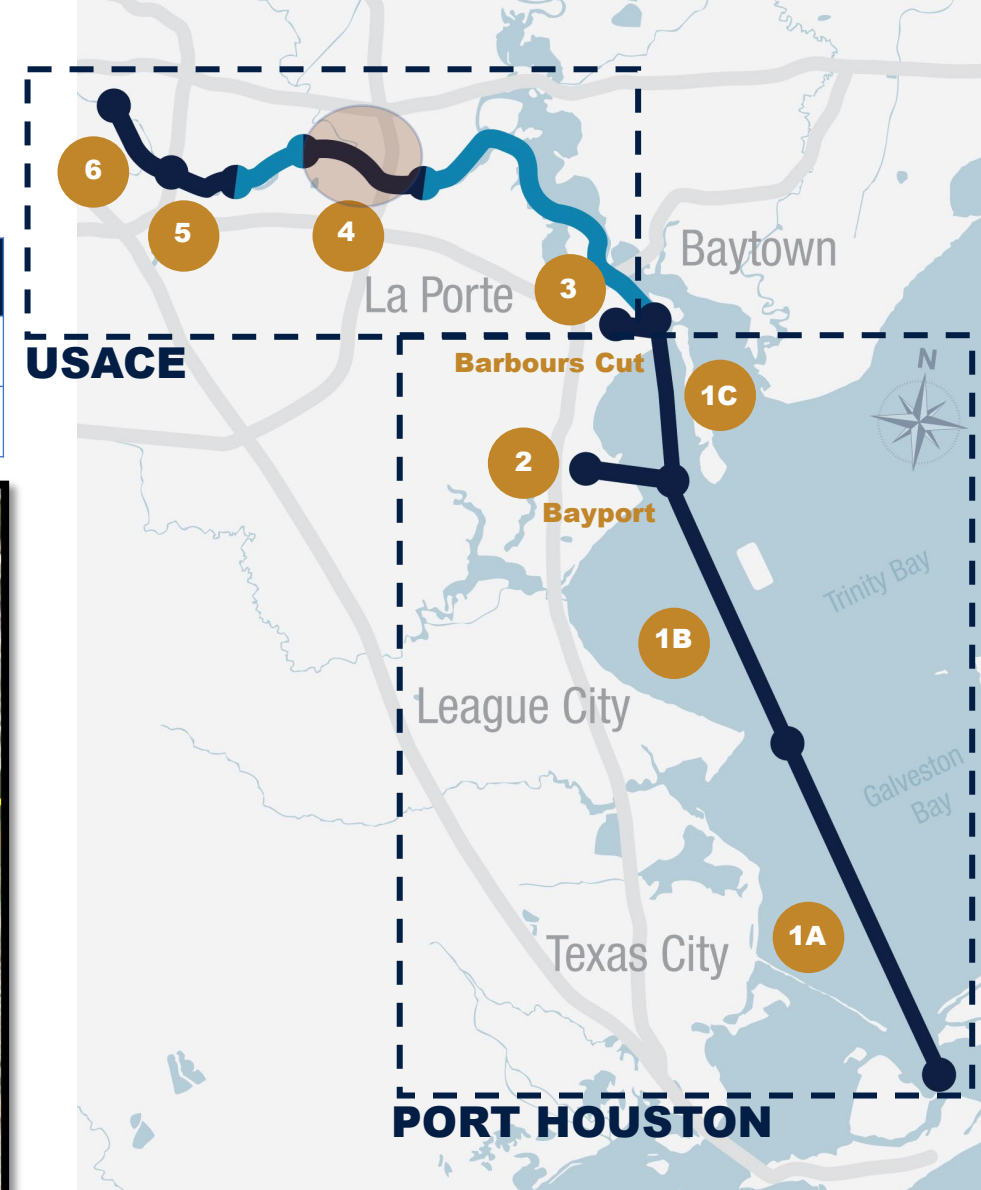
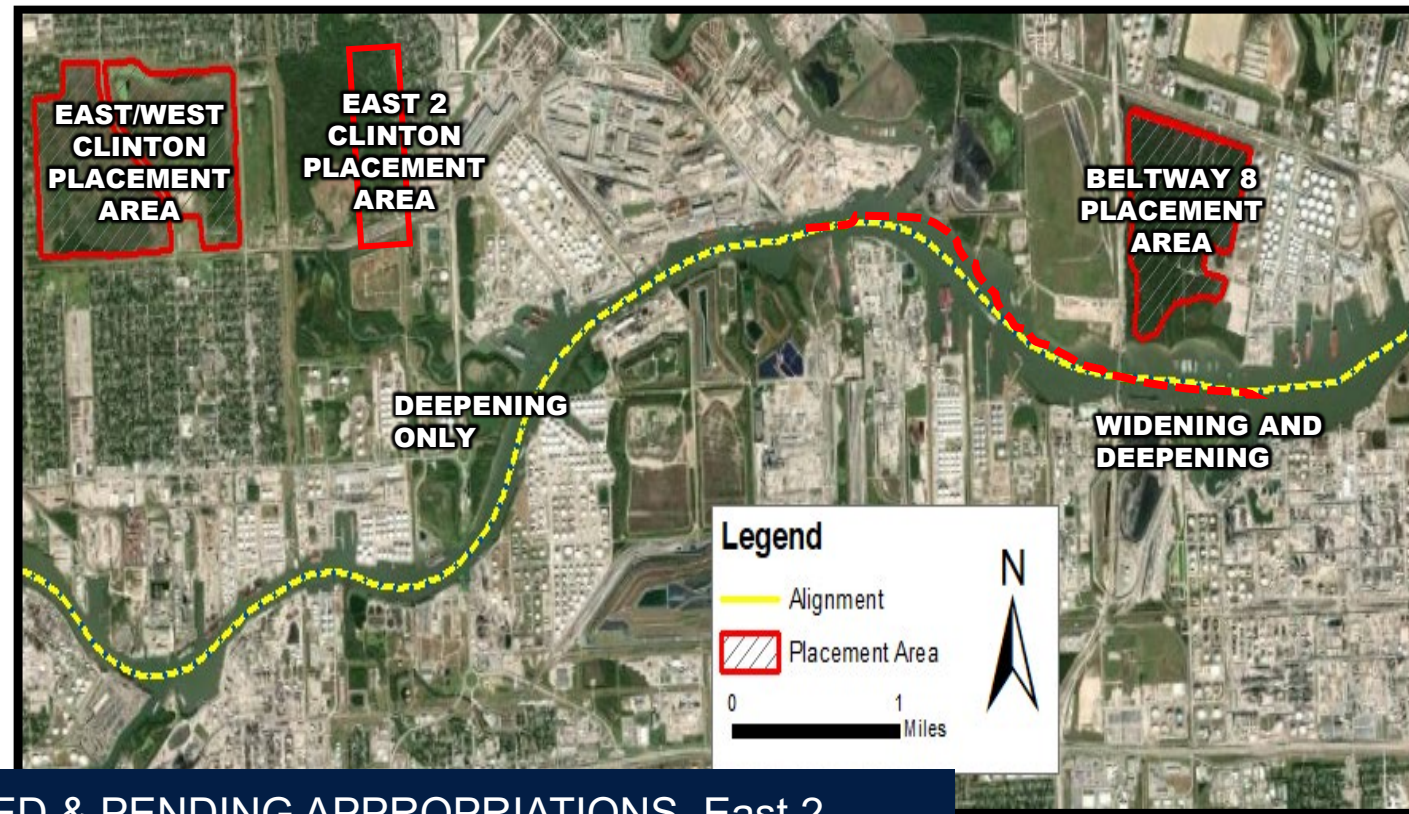




# SEGMENT 4. E2 Clinton & BW8.

## PACKAGE 8. DESIGN-CONSTRUCTION PACKAGE UPDATE

Advertisement	Construction	Contractor
OCT 2023	USACE E2C: JAN – DEC 2025	TBD
APR 2024	USACE BW8: JUL 2024 – JUL 2025	TBD



 No work planned in these areas



FUNDED & PENDING APPROPRIATIONS. East 2 Clinton and Beltway 8 Placement Area Construction.

# Pending Federal Appropriations.

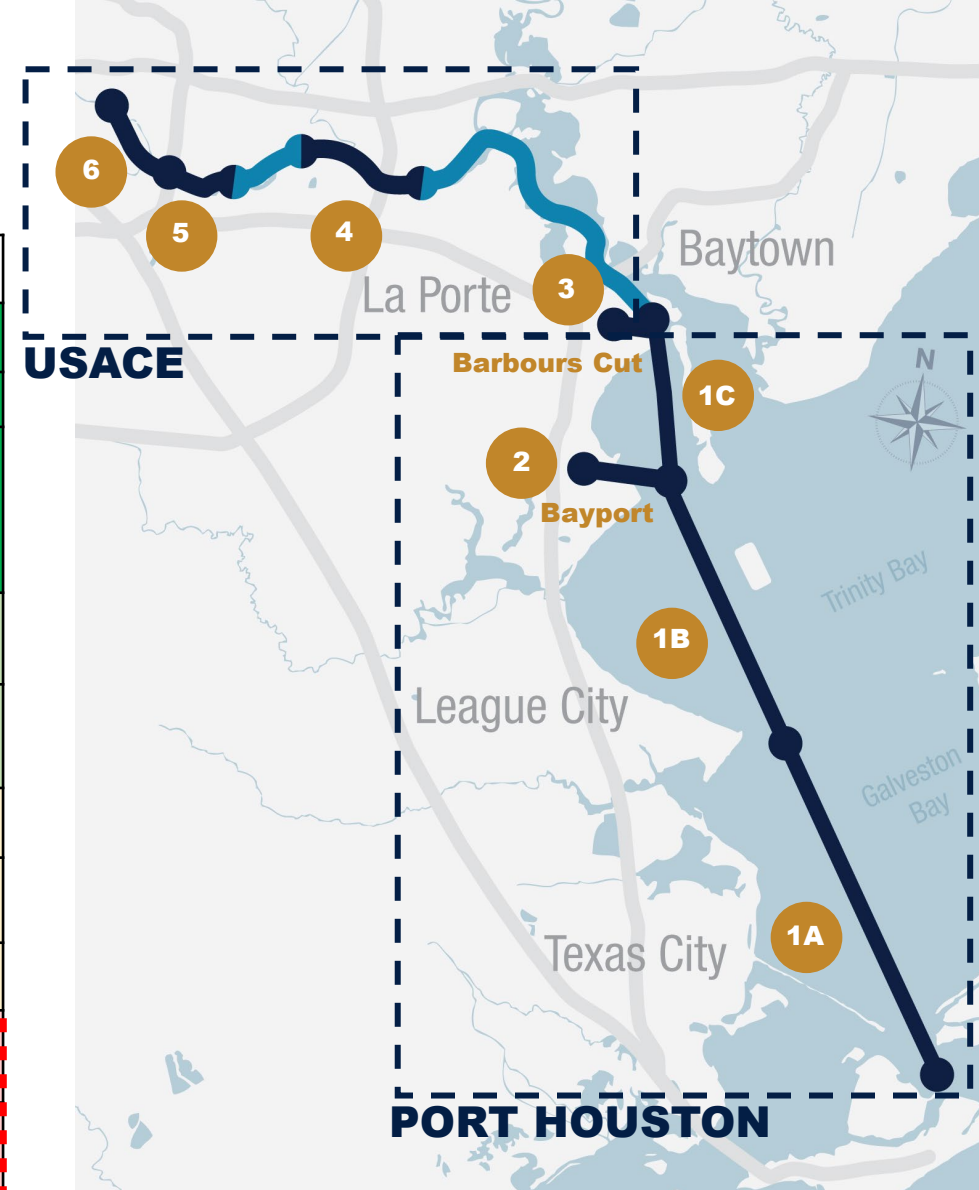


PORT HOUSTON

# PROJECT 11

## TENTATIVE PROCUREMENT AND CONSTRUCTION SCHEDULE

Package		Segment	Advertise	Construction	
Completed	1	1A	Aug 2021	USACE	Jan - Oct 2022
	2	4	Feb 2021	Port	Jun 2021 - Jun 2022
	Abandoned Pipeline Removal	1B, 1C, 2	Aug 2021	Port	Jan - Jul 2022
Under Contract	3/4A	1A	Jul 2021	Port	Feb 2022 - Mar 2023
	4B/5	1B, 1C, 2	Nov 2021	Port	Oct 2022 - Sept 2024
Funded	6	1C	Oct 2023	Port	Jan - Dec 2024
	7	3	Sept 2023	USACE	Mar 2024 - Sept 2026
	8 – E2C	4	Oct 2023	USACE	Jan - Dec 2025
Pending Federal Appropriations	8 – BW8	4	Apr 2024	USACE	Jul 2024 - Jul 2025
	9	4	Mar 2025	USACE	Aug 2025 - Aug 2026
	10, 11	5, 6	Sept 2024	USACE	Feb 2025 - Feb 2026
	12	5, 6	Nov 2025	USACE	Apr - Dec 2026



 No work planned in these areas



# QUESTIONS?

---

**Visit** the Project 11 Webpage

<https://www.expandthehoustonshipchannel.com/>

**Email** the Project 11 Team

[Project11@PortHouston.com](mailto:Project11@PortHouston.com)

**Contact Information** Lori Brownell, PE, D.NE. F.ASCE

[LBrownell@PortHouston.com](mailto:LBrownell@PortHouston.com) | Cell. 346.337.1909



PORT HOUSTON