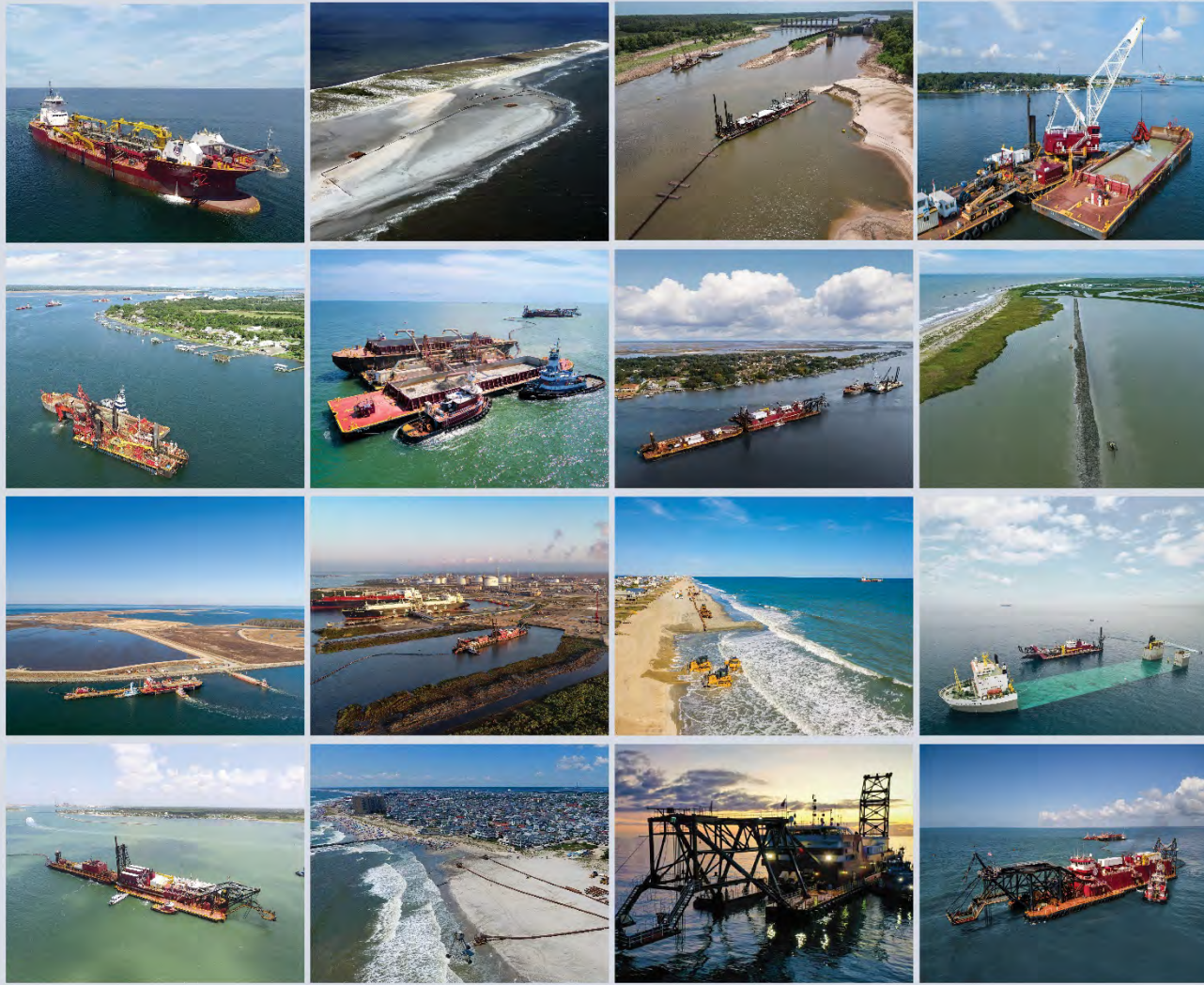


GREAT LAKES DREDGE & DOCK COMPANY, LLC









WEDA Presentation Jacksonville Harbor Deepening Contract B & C

It All Starts With Dredging®



AGENDA

-  1 Pre & Post Bid Partners
-  2 About Great Lakes
-  3 Project Overview
-  4 Engineering Geotech Challenges
-  5 Obstacles Navigated
-  6 Regional Benefit





Pre & Post Bid Partners
Thank You!

GREAT LAKES DREDGE & DOCK COMPANY, LLC
www.gldd.com | © 2021 All Rights Reserved





Pre-Bid Partners

Thank you for all the hard work.



**US Army Corps
of Engineers**®
Jacksonville District



Florida Department of Transportation



GREAT LAKES DREDGE & DOCK COMPANY, LLC
www.gldd.com | © 2021 All Rights Reserved



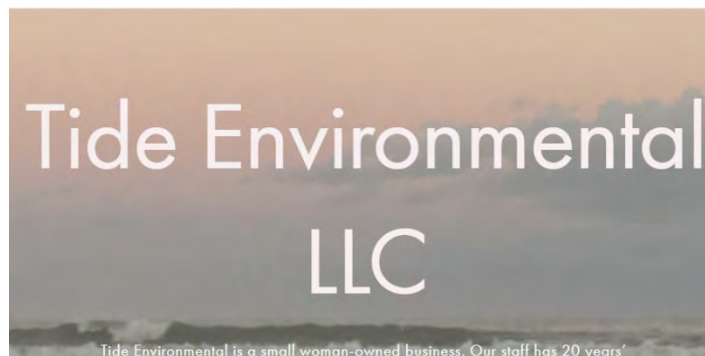


Post-bid Partners

Thank you for all the coordination & planning.



**US Army Corps
of Engineers** ®
Jacksonville District





**6 FIXED-HULL
CUTTER SUCTION DREDGES**



**2 PORTABLE
CUTTER SUCTION DREDGES**



6 HOPPER DREDGES



5 CLAMSHELL DREDGES



BACKHOE DREDGE NEW YORK



DRILL BOAT APACHE

About Great Lakes





About GREAT LAKES



- ✓ Providing dredging services since 1890
- ✓ Industry-leading dredging firm in the U.S.
- ✓ Long history of performing significant international projects
- ✓ Completed dredging projects on six (6) continents
- ✓ ~1200 Employees
- ✓ Publicly traded NASDAQ: GLDD
- ✓ Largest volume dredging contract completed
→ 104,600,000 CY
- ✓ On average GLDD dredges 51,000,000+ CY per year
- ✓ Operate CSD (cutter suction or hydraulic dredges), trailing suction hopper dredges (hoppers), and mechanical (clamshell & backhoe)





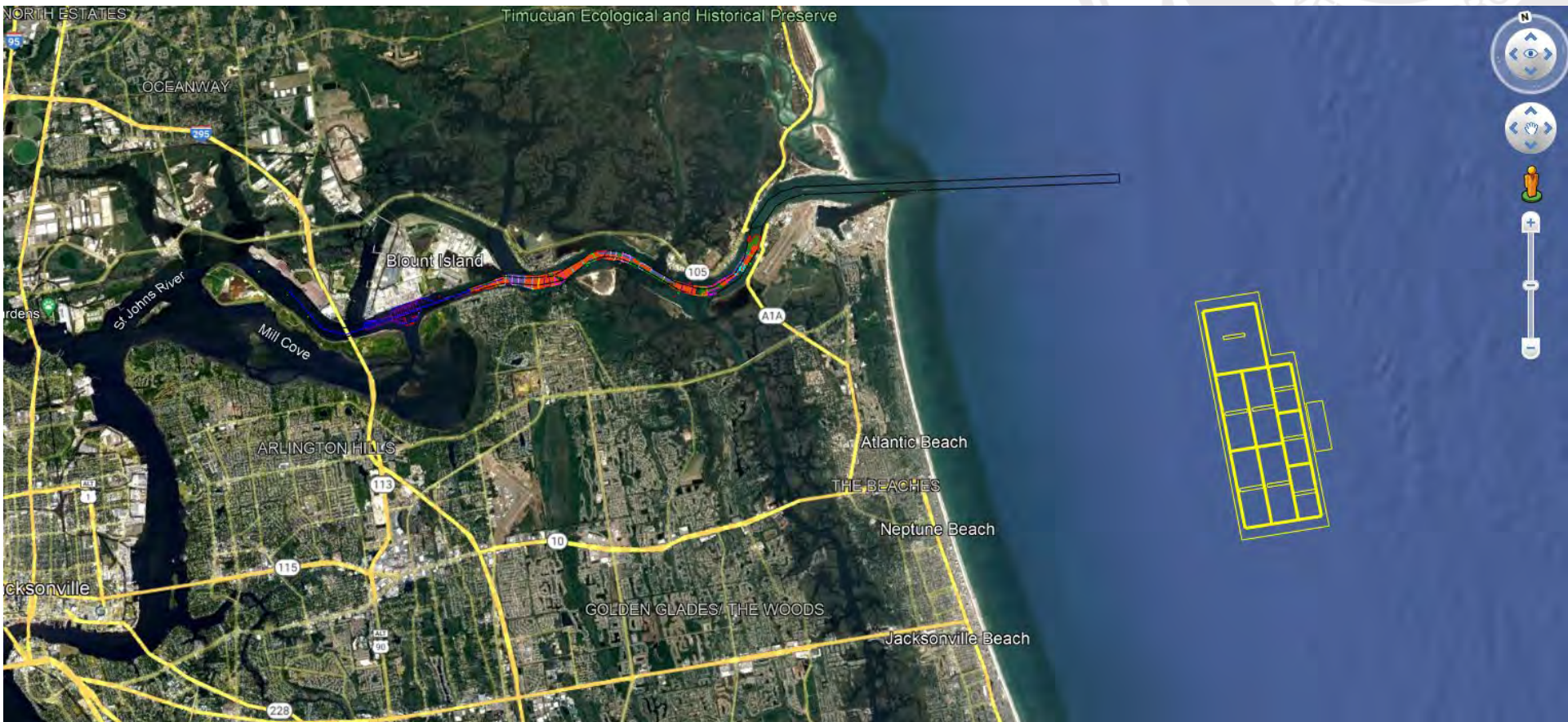
Project Overview

GREAT LAKES DREDGE & DOCK COMPANY, LLC
www.gldd.com | © 2021 All Rights Reserved



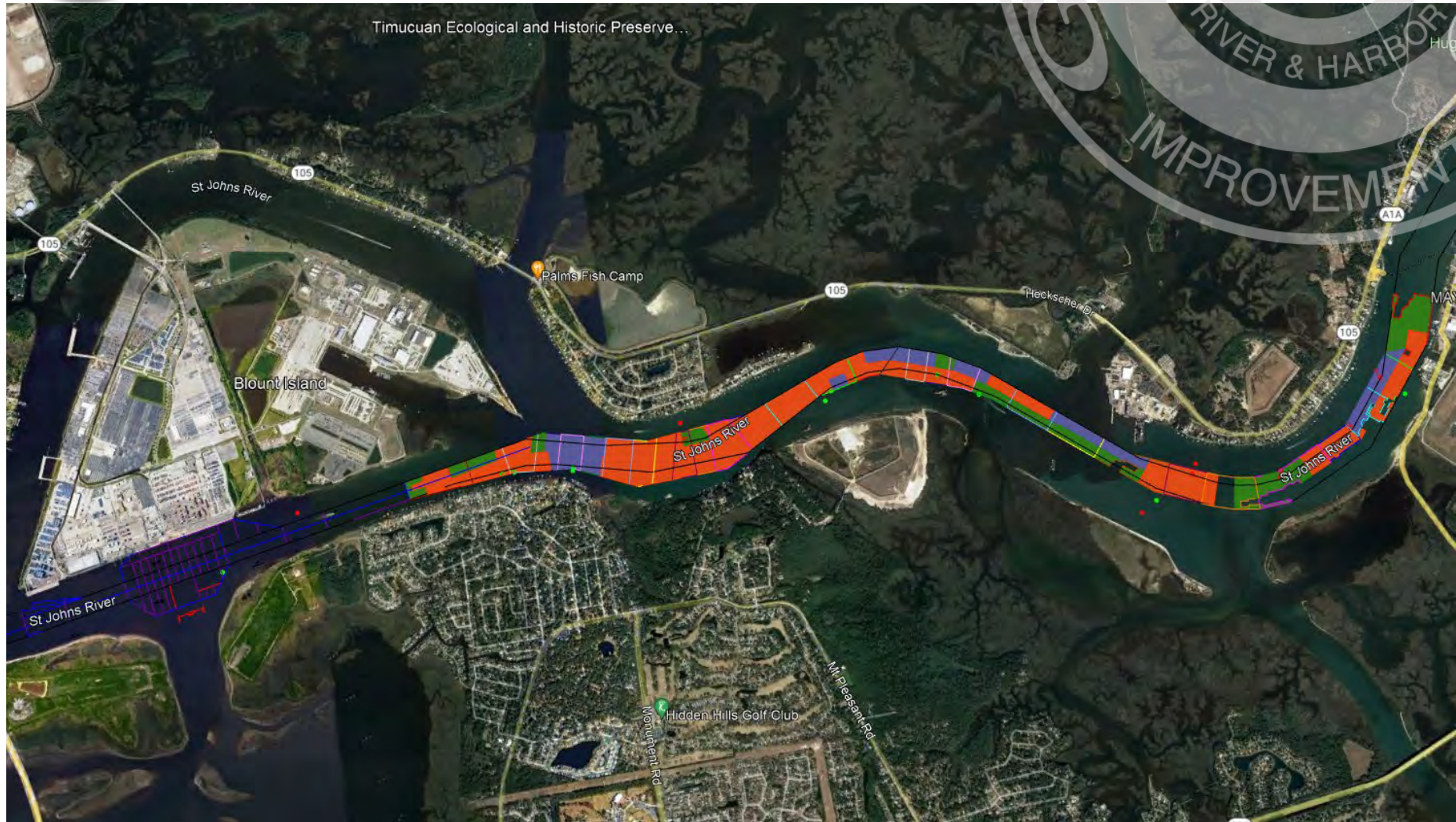


Project Overview



3

Project Overview





Project Equipment





Project Equipment





Engineering Geotechnical Challenges

Contract borings & Subsurface Modeling

GREAT LAKES DREDGE & DOCK COMPANY, LLC
www.gldd.com | © 2021 All Rights Reserved





Engineering Geotechnical Challenges

Project Execution & Planning

Consistently Inconsistent!

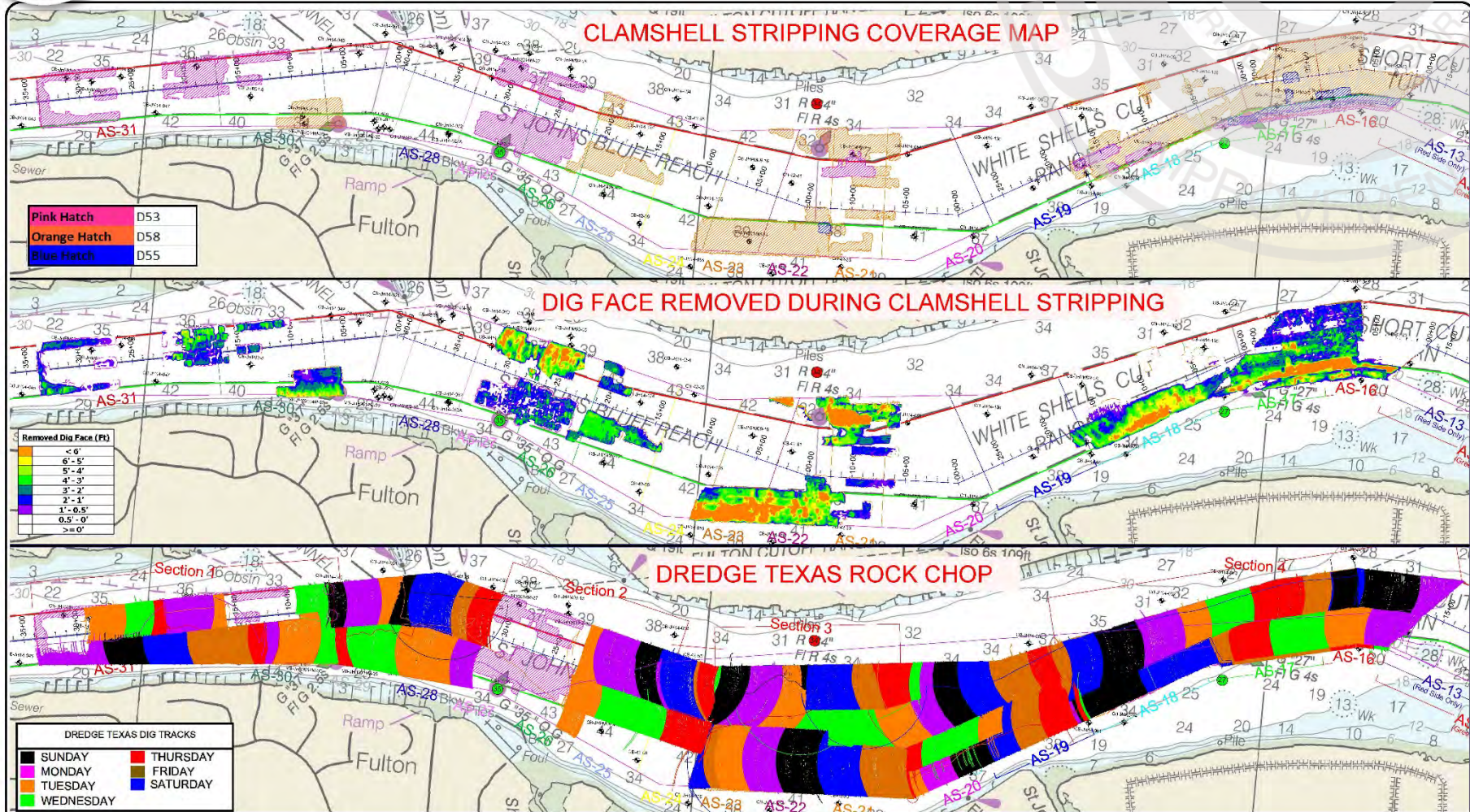
✓ Theme of JAX's Material Composition

- Compare borings to models.
- Identify the sand, clay, weathered rock and limestone layers and contours
- Select the optimal timing, equipment and dig depth
- Sequence Pre-treating with mechanical dredge schedule
- Coordinate the plan with USACE, Bar Pilots, USCG, other river users and GLDD.



4

Engineering Geotechnical Challenges Contract borings & Subsurface Modeling



GREAT LAKES DREDGE AND DOCK COMPANY
 ONE PARKVIEW PLAZA, SUITE 600
 OAKBROOK TERRACE, IL 60181
 CIVIL ENGINEERING / SURVEYING DIVISION
 Phone 520 574-3000 Fax 520 574-1015

PROJECT: Jacksonville Deepening

TITLE: Option B - Overview and DR Comparison

DATE: 12/07	DATE: 12/07	DATE: 12/07	DATE: 12/07	DATE: 12/07
BY: J. B. B. B.	BY: J. B. B. B.	BY: J. B. B. B.	BY: J. B. B. B.	BY: J. B. B. B.
DATE: 12/07	DATE: 12/07	DATE: 12/07	DATE: 12/07	DATE: 12/07
BY: J. B. B. B.	BY: J. B. B. B.	BY: J. B. B. B.	BY: J. B. B. B.	BY: J. B. B. B.

PROJECT METADATA

PROJECT: Jacksonville Deepening	DATE: 12/07
TITLE: Option B - Overview and DR Comparison	DATE: 12/07
BY: J. B. B. B.	DATE: 12/07
DATE: 12/07	DATE: 12/07

LEGEND

GRAPHIC SCALE



PAGE

1

OF 1 PAGES

CONFIDENTIAL & PROPRIETARY
 This document contains confidential and proprietary information of Great Lakes Dredge & Dock Company. If you have received this document in error, it should be destroyed or returned to the company.



Obstacles Navigated

GREAT LAKES DREDGE & DOCK COMPANY, LLC
www.gldd.com | © 2021 All Rights Reserved





Obstacles Navigated

Even with precise plans, there will be occasional snafus.





Obstacles Navigated

Partnering for a resolution is key.

- ✓ Shipping Highway the focal point of the dig area
- ✓ Equipment Utilization (surveys, plans & quantities)
- ✓ Environment Concerns (OFW)
- ✓ Updated Environmental Concurrence (height tolerance)
- ✓ Disposal Variances to USACE -> FDEP
- ✓ Severe Weather Events





Regional Benefits





Regional Benefits

- ✓ USACE Navigational Study 2014
 - Avg annual equivalent Benefits \$89,700,000.
 - Benefit-to-cost ratio 2.7

- ✓ JAXPORT
 - Supports > 138,500 jobs & \$31.1 billion in revenue for the region and state
 - Largest container port in FL & 10th in US
 - Maintaining growth in Asian container volumes.
 - 100% increase since 2012 & 57% local jobs
 - 15,000 jobs are created or protected by this project.
 - \$24 return for every \$1 the Port invested in the project





Questions?