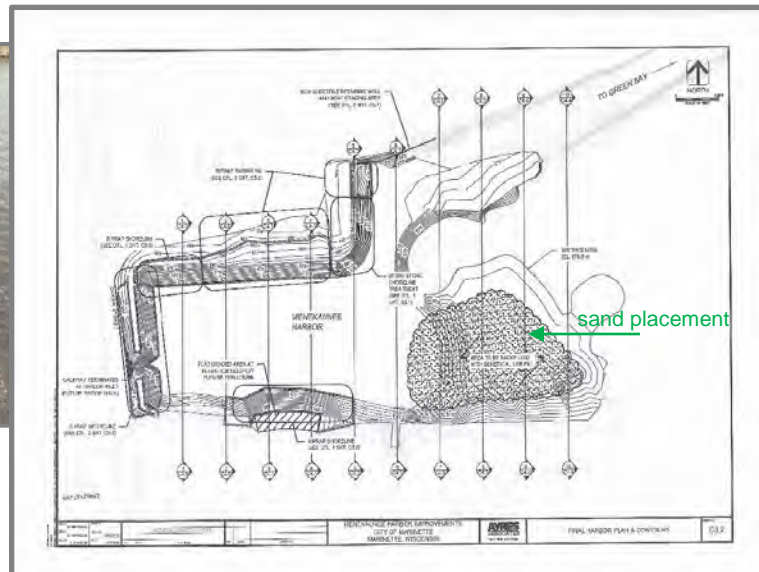


Beneficial Use of Dredge Material: Environmental Perspective (Wisconsin)

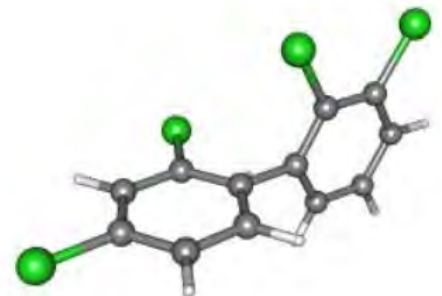


To Sum It Up: Wisconsin Supports Beneficial Use

“It is department policy to encourage reuse of dredged material and to minimize environmental harm resulting from a dredging project.”

Ch. NR 347.01(2), Wisconsin Admin. Code

Wisconsin's Great Lakes Areas of Concern



Example:

Wisconsin Pollution Discharge Elimination (*Ch. 283, Wis. State Statutes*)

5) “Discharge of pollutant” or “discharge of pollutants” means any addition of any pollutant to the waters of this state from any point source.

(6m) “Environmental pollution” means the contaminating or rendering unclean or impure the air, land or waters of the state, or making the same injurious to public health, harmful for commercial or recreational use, or deleterious to fish, bird, animal or plant life.

(12) “Point source” means either of the following:

(a) A discernible, confined, and discrete conveyance, including but not limited to any pipe, ditch, channel, tunnel, conduit, well, discrete fissure, container, rolling stock, concentrated animal feeding operation, or vessel or other floating craft from which pollutants may be discharged either into the waters of the state...

(13) “Pollutant” means any dredged spoil, solid waste, incinerator residue, sewage, garbage, refuse, oil, sewage sludge, munitions, chemical wastes, biological materials, radioactive substance, heat, wrecked or discarded equipment, rock, sand, cellar dirt and industrial, municipal and agricultural waste discharged into water.

Multi-Partner and Cross-Program Communication

- “SPOILS” → “DREDGE MATERIAL”
- “DISPOSE” → “USE ”
- “DUMP” → “PLACE”

CHANGE THE
LANGUAGE

CHANGE THE
CONVERSATION

CHANGE THE
THINKING

Some B.U. Projects in Wisconsin

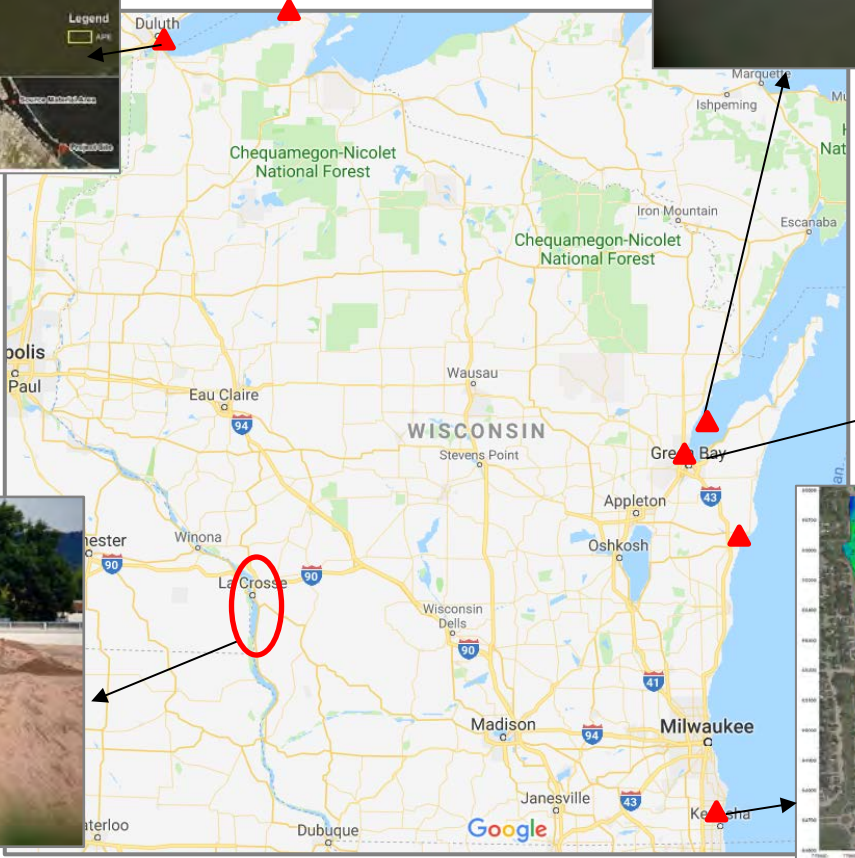
Allouez Bay Plover Habitat



Miss. River Pool 8;
~ 100k yds/year



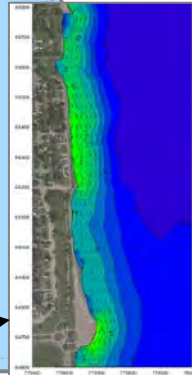
Cat Island



Fox River PCB Project; sand separation



Kenosha Harbor/littoral placement



Port of Green Bay, Brown County

Request for Proposal (RFP)

For

Brown County

**Development of a Sediment Beneficial Reuse
Program**

Project #2320



Goal:

Establish a process to eliminate case-by-case approvals for beneficial use of the Port's dredge material through the coordination of a Working Group comprised of the Port, WDNR, USACE, and other interested parties.

Regulatory “Inroads”

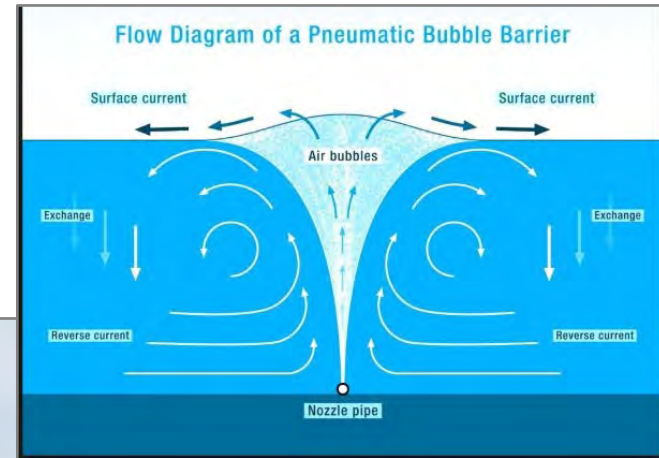
➤ Terrestrial

- Same approach as evaluation for soil management options (RCLs).

➤ Aquatic

- Characterization of material and receiving area:
GLDT cooperative efforts on Corps’ Testing Manual for Regional Beneficial Use Determinations
- Environmental ‘Windows’:
Efforts for regional approach, incorporate recent research re: turbidity impacts when establishing exclusion dates

Continue to Develop and Incorporate Innovative Techniques



THANKS!

