

Virginia Beach, Virginia Beach Re-Nourishment Projects:

Sandbridge Beach and “Resort Beach”

Norfolk District
US Army Corps of Engineers
Kristin.M.Mazur@usace.army.mil
757.201.7257

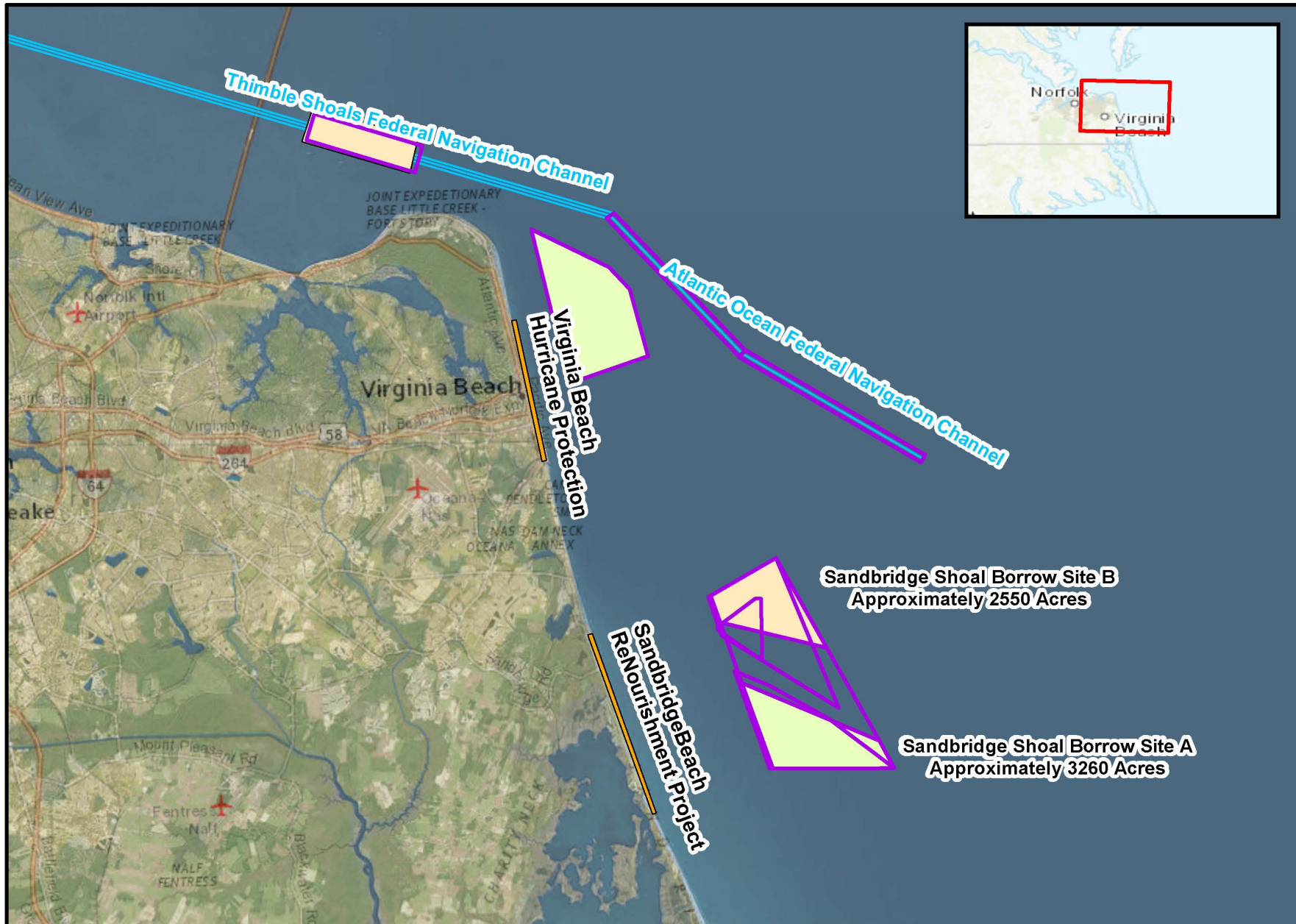
City of Virginia Beach
Jim White
jawhite@vb.gov
757.385.4838

“The views, opinions and findings contained in this report are those of the authors(s) and should not be construed as an official Department of the Army position, policy or decision, unless so designated by other official documentation.”



US Army Corps
of Engineers™





US Army Corps
of Engineers
Norfolk District

Sandbridge Beach ReNourishment Project Virginia Beach Hurricane Protection



0 1 2 4 Miles

Map: VABeach_and_Sandbridge
Developed By: Kaylyn Duda
Date: 9/28/2018



SANBRIDGE AND “RESORT BEACH” CURRENT STATUS AND CONSIDERATIONS

Considerations

- Consolidating 2 projects
- Period of performance is preferred from March – June
- Environmental window (September 1st -November 14th)
- Hopper Dredge
- Total volume = about 3.5 MCY (Sandbridge= 2 MCY, VB = 1.5 MCY)
- UXO Potential in Borrow Sites; Screening and Safety Plans

Req'd

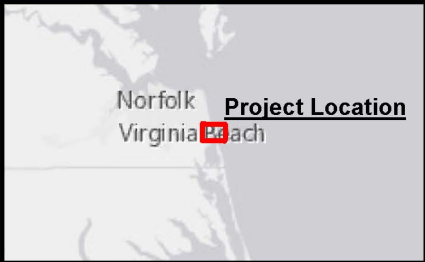
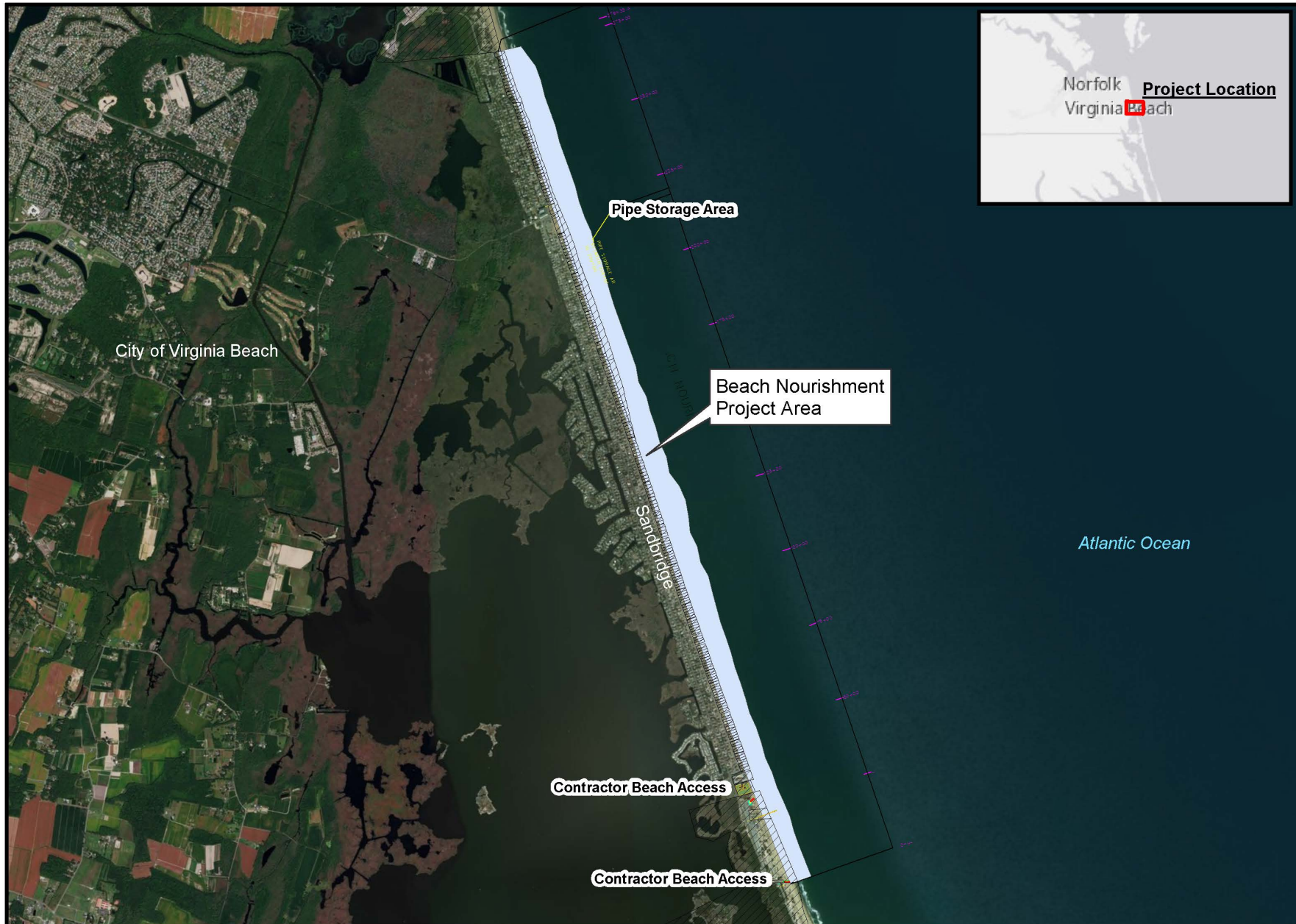
Status

- Environmental Coordination almost complete
- Fully funded
- Borrow Site(s) Investigations Complete
- Ready to Advertise Both Projects - Late Nov/Early Dec.



US Army Corps
of Engineers™





US Army Corps
of Engineers
Norfolk District

Sandbridge Beach Re-Nourishment Project Sandbridge, Virginia 2018

0 0.25 0.5 1 Miles



Project Manager: Kristin Mazur

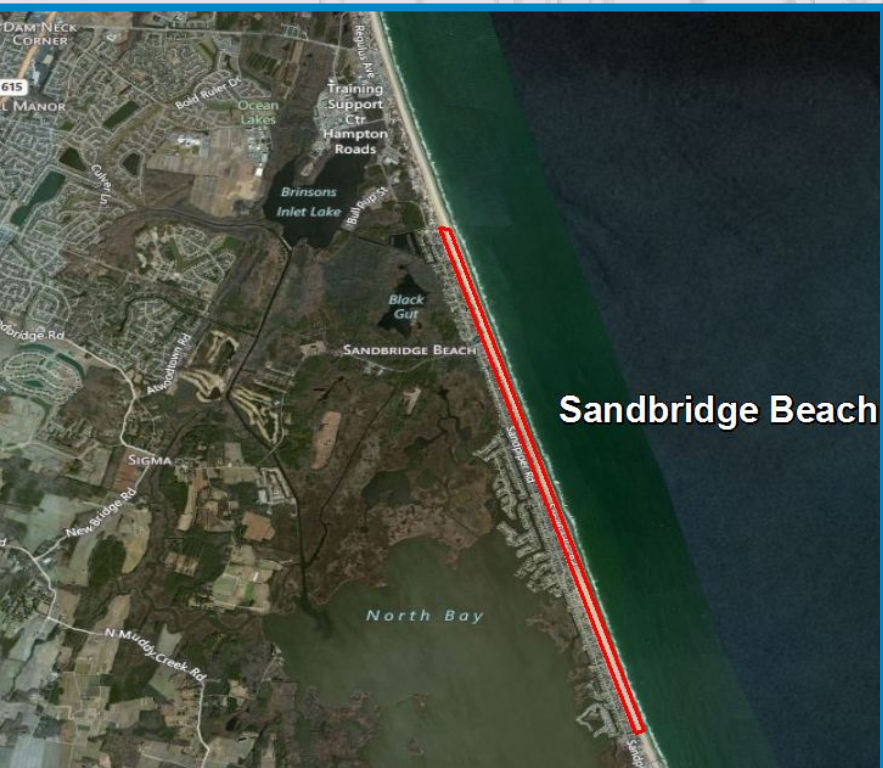
Map: Sandbridge_beach_replenish_2018

Developed By: Karin Dridge

Date: 4/11/2018



Sandbridge Beach



Basic SOW:

- 2 MCY
- Requires grain size = D50 greater than 0.25 (Beach Quality Sand)
- Borrow sites is the Sandbridge Shoal, 3 mi. offshore, (next slide)
- Dredge depth – to -50'
- Looking to consolidate with Va Beach “Resort” if schedules can be maintained
- Hopper Dredge
- Beach placement – 5 miles of beach on Sandbridge Beach
- 50' beach berm
- Hopper Dredge
- Requires turtle monitoring and mitigation measures
- ToY Restrictions – Sept 1- Nov 14



US Army Corps
of Engineers™



Legend

Vibracore Locations 1995

Condition

- Good sand with notes
- SAT
- SAT with notes
- SP
- SAT and UNSAT
- UNSAT
- UNSAT with notes
- not catagorized
- Wreck or Obstruction

 Reported Paleochannel Area

 Archeology Avoidance Area

 Archology Avoidance Area Buffer

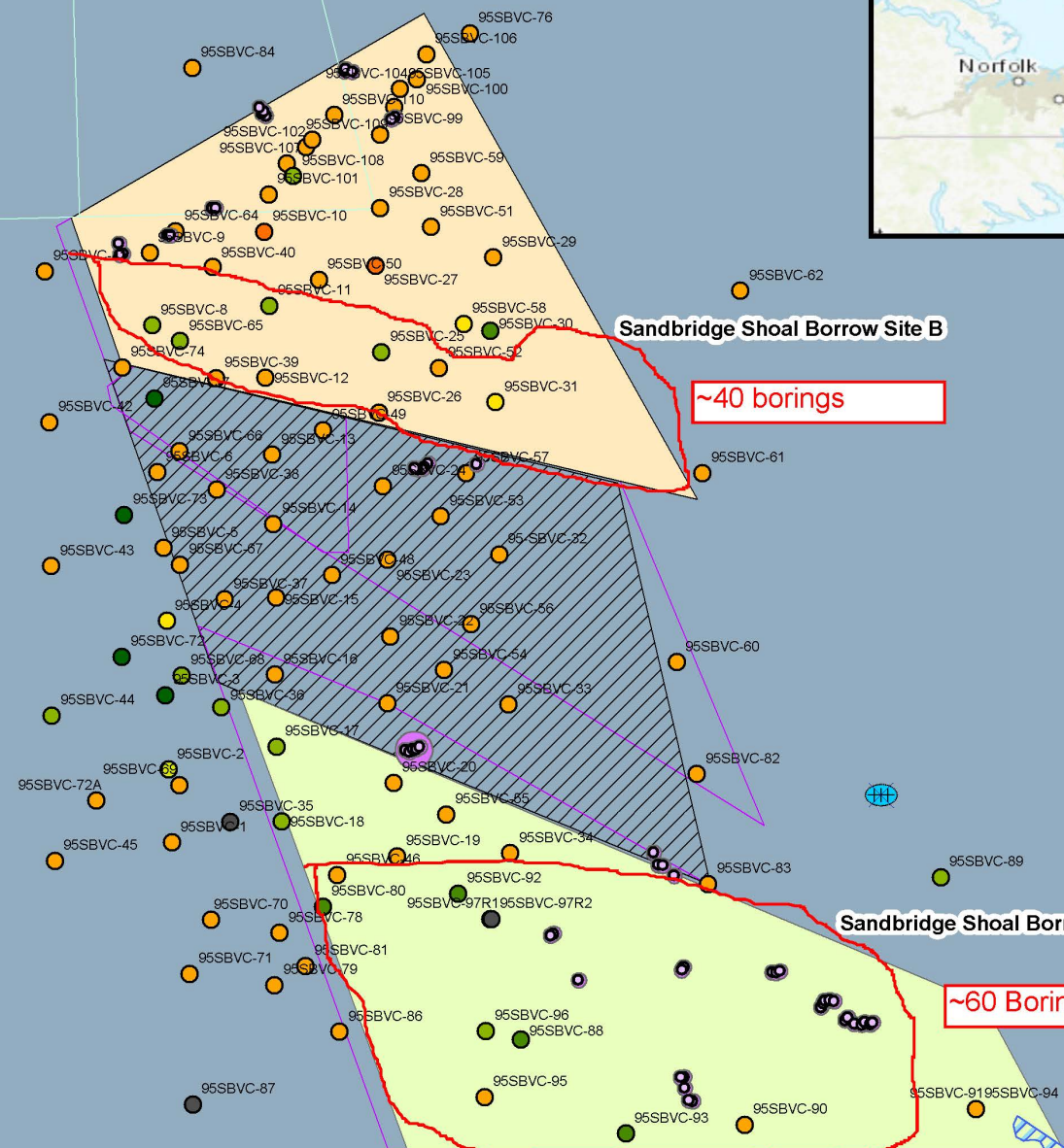
 Dredge Material Placement Area

 Current Borrow Area A

 Current Borrow Area B

 Historical Permit Area

 No Dredge Area



Beach ReNourishment Project



US Army Corps
of Engineers
Norfolk District

Sandbridge Shoal Borrow Areas Sandbridge Beach ReNourishment Project City of Virginia Beach, Virginia



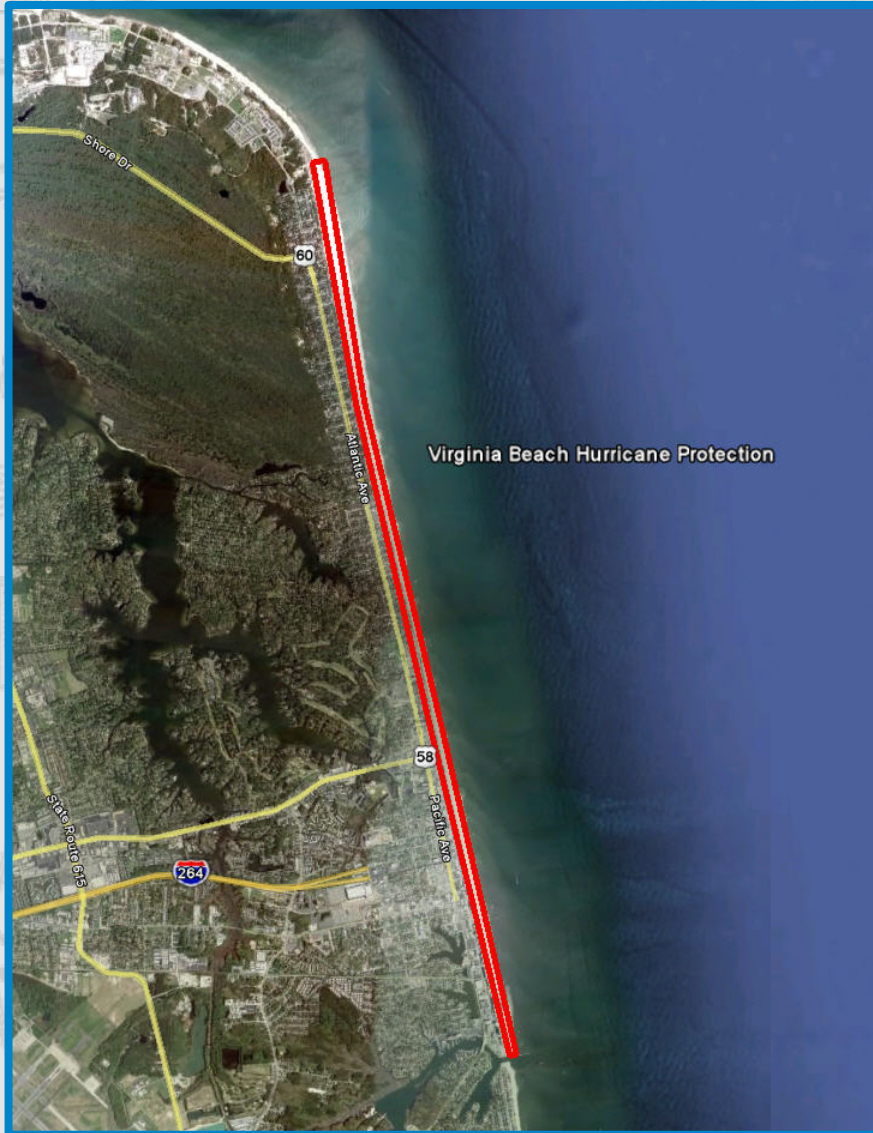
0 2,500 5,000 10,000
Feet

Base Maps: ESRI Online

Map: Sandbridge_borrow_boring_Mar2018pts
Developed By: Karin Dridge
Date: 3/7/2018



Virginia Beach Hurricane Protection Project “Resort Beach”



Basic SOW:

- 1.5 MCY
- Requires grain size = D50 greater than 0.25 (Beach Quality Sand)
- Borrow sites are Thimble Shoals Channel and Atlantic Ocean Channel
- Dredge depth – to -68' MLLW
- Looking to consolidate with Sandbridge if schedules can be maintained
- Hopper Dredge
- Beach placement from 2nd Street to 60th street approximately
- 50' beach berm
- Hopper Dredge
- Requires turtle monitoring and mitigation measures
- ToY Restrictions – Sept 1- Nov 14



US Army Corps
of Engineers™

