

# Rock Island District



- MVR Covers ~78,000 square miles
  - ▶ Minnesota, Wisconsin, Iowa, Illinois, & Missouri
- MVR has more than 900 people at its headquarters and 27 field operating sites
  - ▶ 12 UMR Locks & Dams
  - ▶ 8 IWW Locks and Dams
  - ▶ 3 Reservoirs



# District Missions

- Navigation
- Flood Risk Management
- Regulatory
- Environmental Protection and Restoration
- Emergency Management
- Recreation
- Water Supply
- Hydropower
- Support for Others
- Military Programs



**BUILDING STRONG®**

# MVR Channel Maintenance



## ■ Mississippi River

- ▶ **314 River Miles**
- ▶ Below L/D 22 Saverton, MO
- ▶ Below L/D 10 Guttenberg, IA

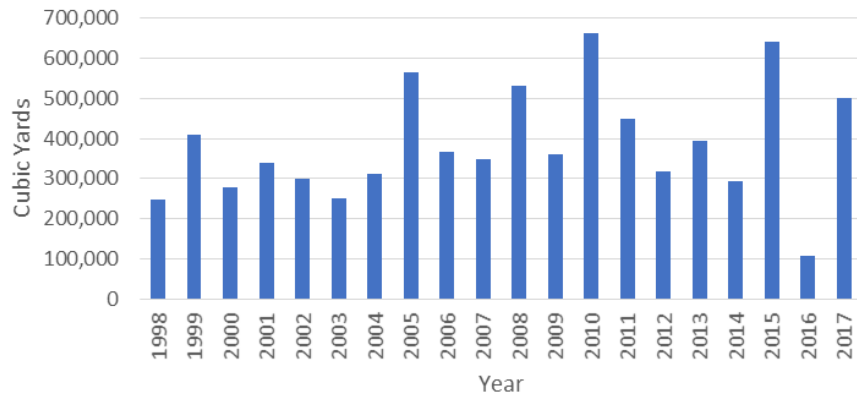
## ■ Illinois Waterway

- ▶ **268 River Miles**
- ▶ LaGrange L/D RM 80.2 – confluence of Des Plaines and Kankakee Rivers RM 273
- ▶ Des Plaines River to CS&SC
- ▶ CS&SC – S. Branch of the Chicago River RM 325.6
- ▶ Cal-Sag, Little Calumet, Calumet to T.J. O'Brien L/D RM 326.4



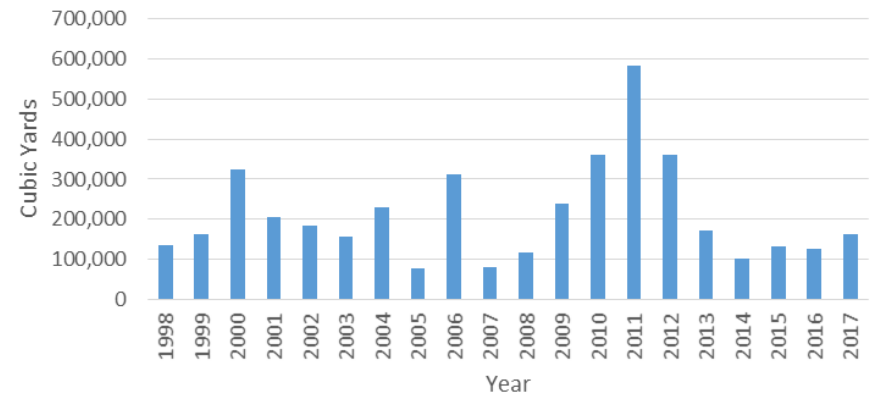
# MVR Channel Maintenance Dredging

MVR 20-Year Summary of Cubic Yards Dredged  
Mississippi River



- Average 400,000 CY per year

MVR 20-Year Summary of Cubic Yards Dredged  
Illinois Waterway



- Average 200,000 CY per year



# Dredging in MVR

Mechanical



Hydraulic



Mechanical



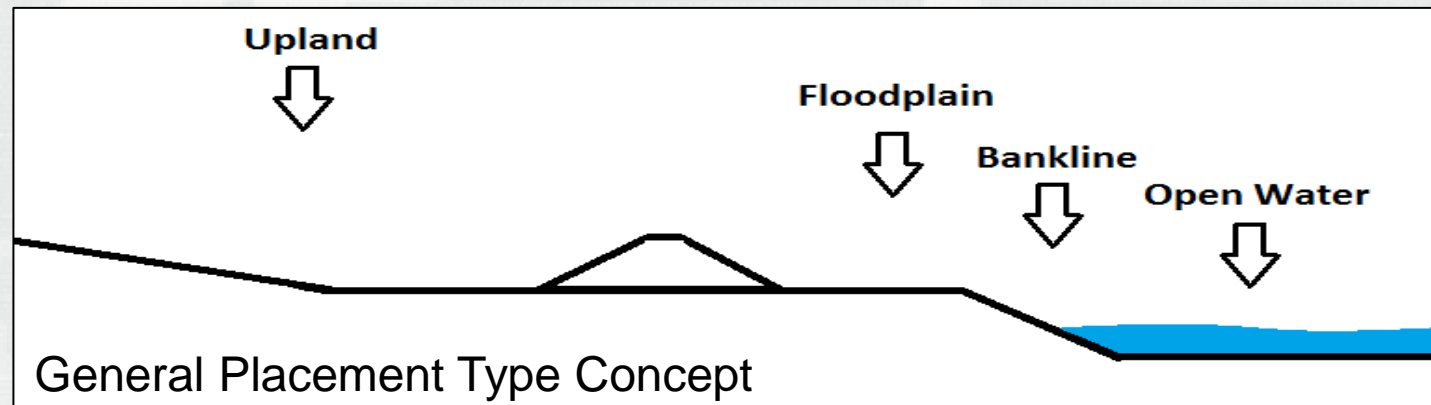
Hydraulic



**BUILDING STRONG®**

# General Types of Placement

- Open Water
- Bankline
- Floodplain
- Upland



# Hydrographic Survey



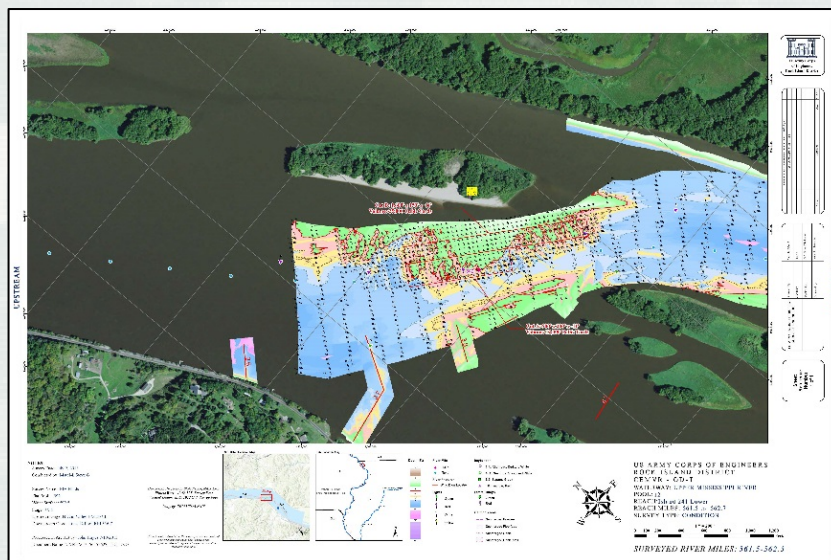
Hinds



Holling



Coot



**BUILDING STRONG®**

# Dredge Schedules

ROCK ISLAND DISTRICT (MVR) - CORPS OF ENGINEERS													ROCK ISLAND DISTRICT (MVR) - CORPS OF ENGINEERS												
2018 Dredging Schedule by Equipment - Upper Mississippi Rive													2018 Dredging Schedule by Equipment - Illinois Waterway												
5-Feb-18													3-Jan-18												
Pool	Site	River Mile	Dredging Equip	Depth & Est. Quantity	Equip.	Placement Site	Placement Type	Dredging Notice #	Job Order #	Cal. A	Other	Pool	Dredge Cut Name	River Mile	Dredging Dates Start	Dredging Dates End	Depth & Est. Quantity	Equip.	Placement Site	Placement Type	Dredging Notice #	Job Order #	Cal. A	Other	
Scheduled Dredging Jobs (List will change after Spring Surveys)																									
11	Turkey River	608.8-610.0		11	10,000	GM	610.4-610.6L	Bankline			R		LaGrange	Beardstown	86.9-87.1			10,000	GM	88.5 R	Bankline			R	
11	Finley's Landing	595.5-596.5		11	40,000	GM/GH	Bathub	Bankline			I		LaGrange	Grand Island Bend	105.6-107.3			35,000	CH		Bankline			R	
13	Maquoketa River	547.0-548.6		11	20,000	GM	Maquoketa River	Inland Beneficial			R		LaGrange	Anderson Lake Light	108.8-109.4			40,000	CH	108.5-110.0 R	Bankline			R	
13	Savanna Bay	538.9-539.6		11	60,000	GH		Thalweg			R		LaGrange	Grand Island Upper	113.0-114.0			45,000	CH	112.5-113.2 R	Bankline			R	
13	Sabula Lower	532.5-533.9		11	30,000	GH	Dark Slough Island/Thalweg	Thalweg			R		LaGrange	Devils Upper	116.9-117.2			17,000	GM	115.3-117.5 L	Bankline			R	
13	Dark Slough	531.0-531.3		11	20,000	GM	Dark Slough Island/Thalweg	Bankline/Thalweg			R		LaGrange	Havana upper	120.5-121.5			55,000	CH	120.2-121.5 R	Bankline			R	
14	Beaver Island	515.8-517.6		11	30,000	GH	516.8-517.2L	Bankline			R		LaGrange	Coon Hollow Island	140.8-141.2			15,000	GM		Bankline			R	
14	Steamboat Slough	503.3-504.0		11	30,000	GH	503.5-504.1R; 503.0	Bankline/Thalweg			R		LaGrange	Mackinaw River	147.6-147.9			30,000	CH	146.8-148.0 L	Bankline			R	
14	Le Claire Canal	498.1-498.6		11	6,000	GM	Smith Island 494.0R	Upland			R		LaGrange	Pekin Bend (wiggles)	150.4-150.8			20,000	CH	150.0-151.0 R	Bankline/Upland			R	
16	Lock 15 Lower	482.2-482.9		11	7,000	GM	Centennial Stockpile 481.9-482.1L	Bankline/Beneficial			R		LaGrange	Lick Creek	155.4-156.4			60,000	CH	154.8-155.4 L	Bankline			R	
16	Centennial Bridge	481.2-482.2		11	10,000	GM	Centennial Stockpile 481.9-482.1L	Bankline/Beneficial			R		Peoria	Blue Creek	172.5-173.2			80,000	CH		None			R	
16	Lindwood	476.0-476.8		11	10,000	GM	Buffalo Banklines	Bankline			R		Peoria	Hennepin Power	214.2-212.9			15,000	GM	214.7-215.8 R	Bankline			R	OSIT Approved
16	Buffalo	472.0-473.2		11	10,000	GM	Buffalo Banklines	Bankline			R		Peoria	Spring Valley upper/Huse Slough	219.2-220.3			30,000	CH	219.1-220.8 R	Bankline			R	
16	Montpelier	469.1-469.7		11	10,000	GM	Buffalo Banklines; 496.4-496.8	Bankline			R		Peoria	Starved Rock Lower	230.3-230.9			16,000	GM	228.0 R	Upland			R	
17	Bass Island	447.2-448.2		11	25,000	GH	Bass Island DMMP Site 448.0L	Upland DMMP Site			R		Starved Rk	Bulls Island Lower	240.1-240.7			10,000	GM	240.4-241.4	Bankline			R	
18	Willow Bar Island Excav.	425.5			150,000	GH	Keithsburg Site 4	Upland DMMP Site			N/A		Starved Rk	Bulls Island Upper	241.5-241.6			4,000	GM	241.7 R	Upland			R	
18	Keithsburg Lower	425.1-426.7		11	30,000	GH	Keithsburg Site 4; 425.4-426.0L	Upland DMMP Site; Bankline			R		Marseilles	Dresden Lower	274.0-271.3			10,000	GM	217.6 R	Bankline or Upland			R	
18	Huron Island	423.5-424.7		11	20,000	GH+GM	Keithsburg Site 4; 425.4-426.0L	Upland DMMP Site; Bankline			R														
18	Benton Island	418.5-420.5		11	20,000	GM	Benton Thalweg 418.8	Thalweg			R														
18	Ogaweka	414.7-415.2		11	20,000	GM	Benton Thalweg 418.8	Thalweg			R														
18	Furnal Island	413.0-414.8		11	15,000	GM	Benton Thalweg 418.8	Thalweg			R														
19	Kemp's Landing Lwr.	398.9-397.7		11	30,000	GH	Kemp's Rd 397.8-398.1L	Bankline			R														
20	Buzzard Island	348.0-349.6		11	25,000	GM	Buzzard Thalweg 348.5	Thalweg			R														
20	Lock 20 Upper	343.5-344.2		11	5,000	GM	343.4-343.7R; 345.0-345.8	Bankline			R														
21	Howards Crossing	337.4-340.3		11	5,000	GM	336.0-336.4R	Bankline			R														
21	Hogback/Lonetree	330.9-332.6		11	15,000	GM	330.5-331.0L; 331.5-332.3L	Thalweg; Bankline			R														
22	Orton Island	322.8-324.1		11	30,000	GH	339.9-324.4L	Bankline			R														
22	NE Missouri Power	319.7-321.2		11	25,000	GH	320.4-320.5R	DMMP Site; Inland Beneficial			R														
22	Cave Hollow	306.0-306.5		11	5,000	GM	Wingdam Field, 306.4L	Open Water			R														
22	Lock 22 Lower	300.3-301.0		11	5,000	GM	Saverton 302.4R	Inland Beneficial			R														



**BUILDING STRONG®**

# Upper Mississippi River Restoration

- Authorized by WRDA 1986
- The Corps is responsible management and execution
- Completed 55 habitat projects
  - ▶ ~100,000 acres of aquatic and floodplain habitat



**BUILDING STRONG®**

# Rock Island District FY17 Contracts

**W912EK-16-D-0007**, Base + 4 Option Years - Illinois Waterway Channel  
Maintenance *Restricted*

Vazquez Commercial Contracting

16" Dredge

1<sup>st</sup> Option Year Complete - December 2017

Final Option Year Expires: December 2020

**W912EK-15-C-0035** - Pool 12 Habitat Restoration and Enhancement *Restricted*

Dubuque Barge and Fleeting Service Company (Newt Marine)

**W912EK-16-C-0034** - Pool 12 Habitat Restoration and Enhancement *Restricted*

Dubuque Barge and Fleeting Service Company (Newt Marine)

**W912EK-17-C-0048** – Hager Slough PL99 *Restricted*

Better by Design (Prime Contractor)



# Rock Island District

## FY18 Contracts

**W912EK-16-D-0007**, Base + 4 Option Years - Illinois Waterway Channel  
Maintenance *Restricted*

Vazquez Commercial Contracting

16" Dredge

Calendar Year 2018 would be the 2<sup>nd</sup> Option Year

Final Option Year Expires: December 2020

**W912EK-16-C-0034** - Pool 12 Habitat Restoration and Enhancement *Restricted*

Continued into FY18

Dubuque Barge and Fleeting Service Company (Newt Marine)

### **Proposed**

UMRR program is targeting a late FY18 contract for Beaver Island restoration Project

*Restricted*



## Contact Information

Matt Martin  
U.S. Army Corps of Engineers  
Rock Island District  
Operations Technical Support Branch  
(309) 794-5337

[matthew.o.martin@usace.army.mil](mailto:matthew.o.martin@usace.army.mil)



**BUILDING STRONG®**