

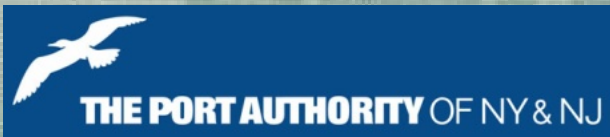
# New York / New Jersey Harbor Deepening Project

## PANEL

USACE, New York District

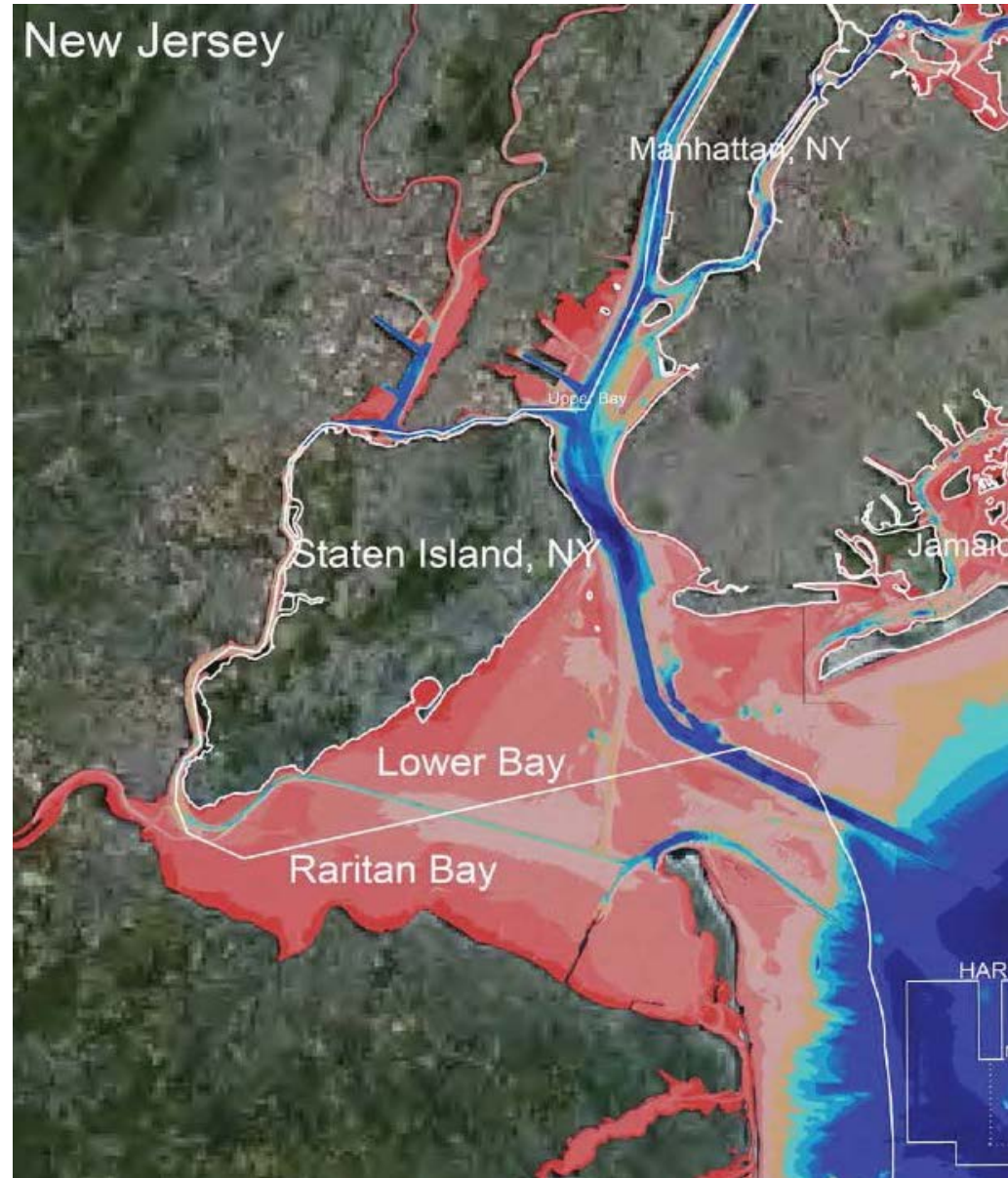
Port Authority of New York  
& New Jersey

New Jersey Department of  
Environmental Protection



# NY/NJ Harbor Deepening Overview

- **Construction timeline:**
  - 40 ft. initiated in 1989
  - Authorized to 50 ft. in 2000
  - Completing 50 ft. in 2016
- **50 ft. Deepening**
  - Initial estimate: \$1.63B
  - Actual cost: \$1.26B
- **38 miles of channel**
- **51 million cubic yards of material**
- **Beneficial reuse of all the dredged material including: marsh island and shallow water habitat restoration, upland remediation, and flood risk reduction projects**



# Key Enablers

- **Strong interagency partnerships**
- **Stakeholder involvement**
  - **Willingness to negotiate mutually agreeable solutions to challenges**
  - **Open communication**
- **Proactive strategic engagement at the federal, state and local level**
- **Cost- and Time-savings**
  - **Full project funding**
  - **Steady and predictable contracts**

# **Panel Members**

**COL David A. Caldwell, USACE New York District  
District Engineer & Commander, Supervisor of the Port**

**Molly Campbell, NY/NJ Port Authority  
Director of Port Commerce**

**Joseph Seebode, USACE New York District  
Deputy District Engineer (Programs)**

**Susan Dietrick, New Jersey Department of Environmental Protection  
Manager, Division of Land Use Regulation**

**Bryce Wisemiller, USACE New York District  
Harbor Deepening Project Manager**