



Dredging's Contribution to Resilient Systems

Contractor's Perspective

Resilient

Resilient*: Able to become strong, healthy, or successful again after something bad happens

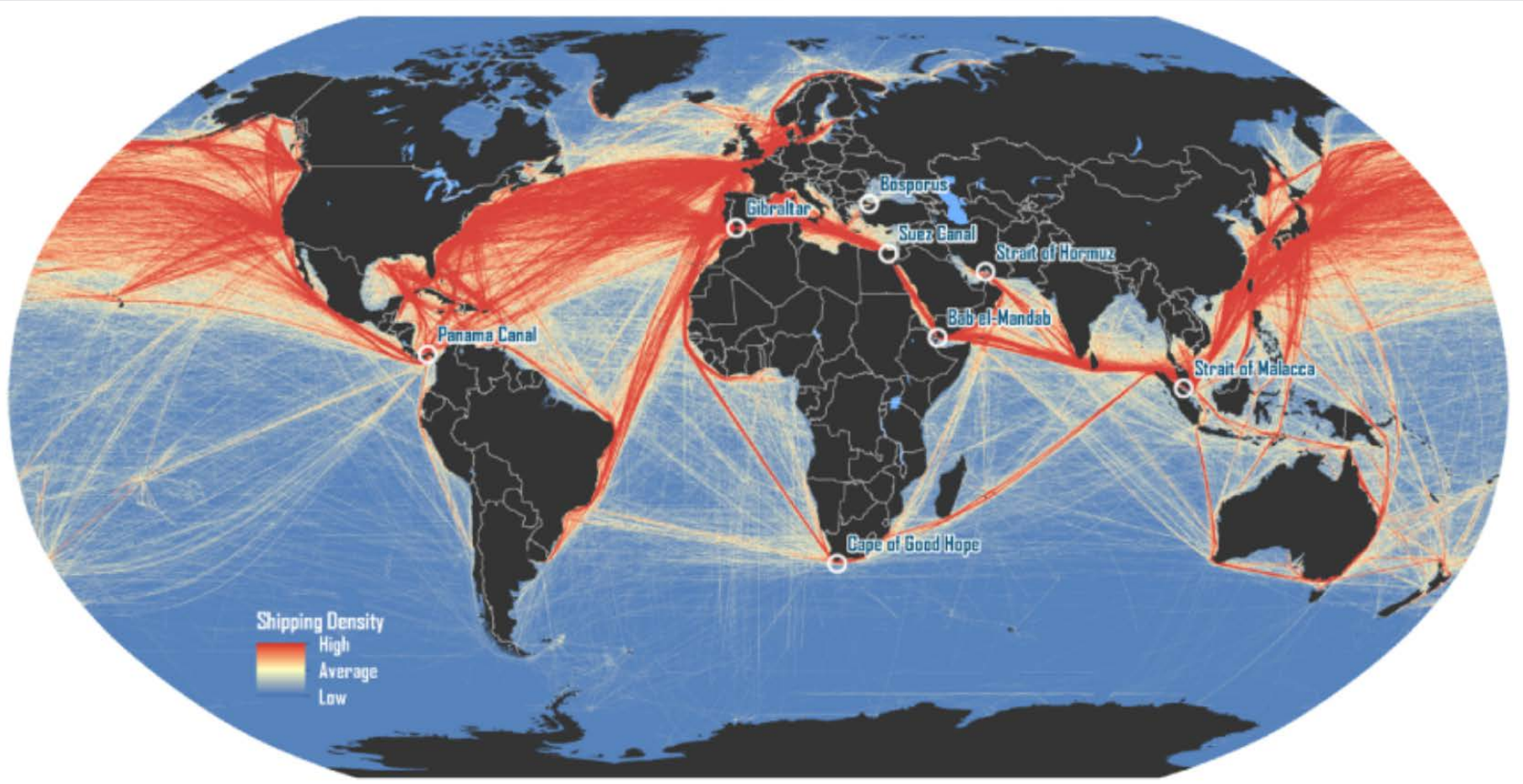
*From Merriam Webster Dictionary



Why is Dredging Good?



Navigation



Navigation

- US Ports
 - Support 23,116,847 jobs
 - 541,946 jobs directly generated by marine cargo and vessel activity
 - Total economic value of \$4,557,104,000,000(4 Trillion)
 - 26% of the nation's GDP
 - 95% of consumers are outside of the US

Source: AAPA

Navigation

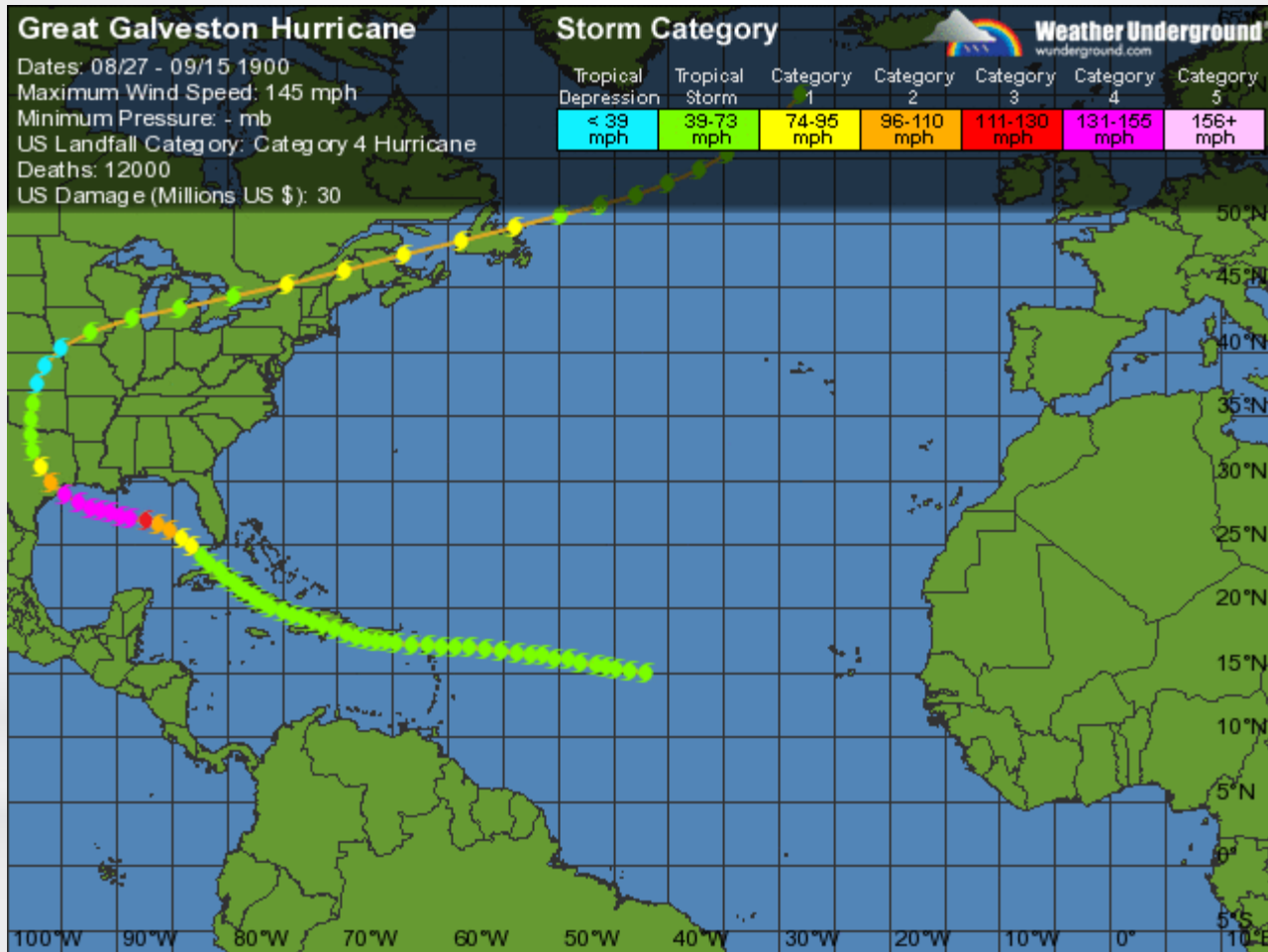
- Initial construction benefits
- Channel maintenance
- Emergency dredging to reopen after channel closings by storm events



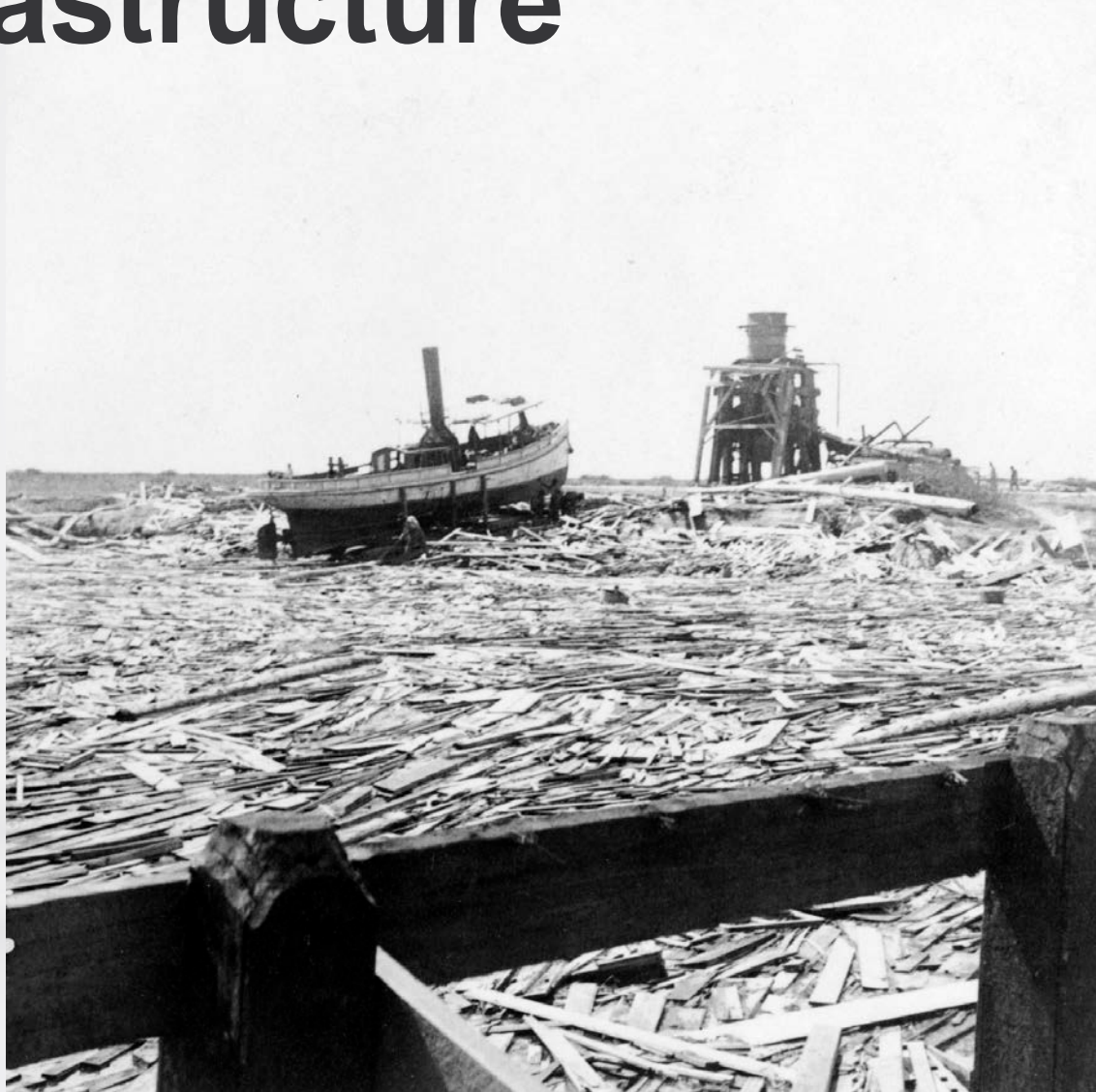
Infrastructure



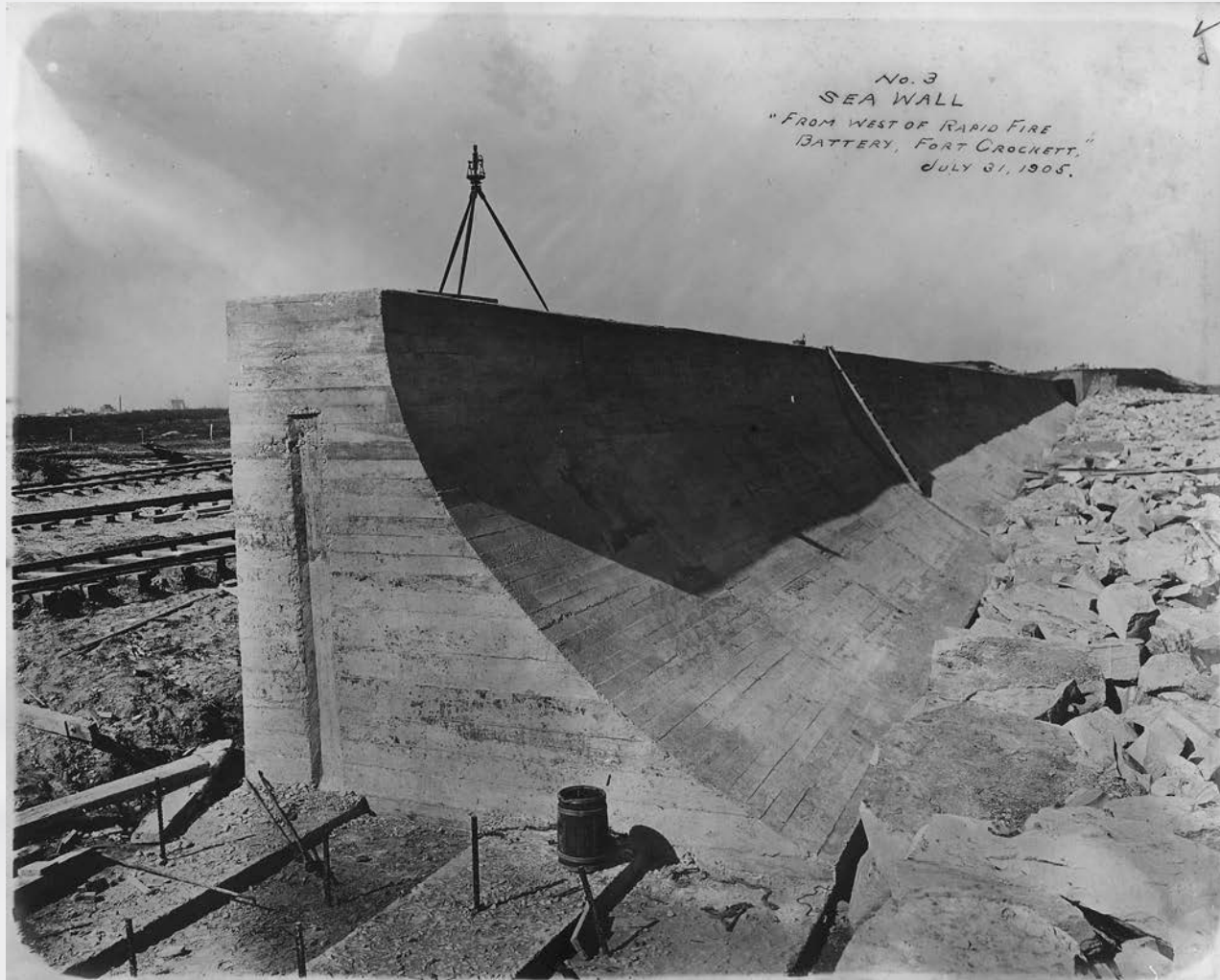
Infrastructure



Infrastructure



Infrastructure



Infrastructure

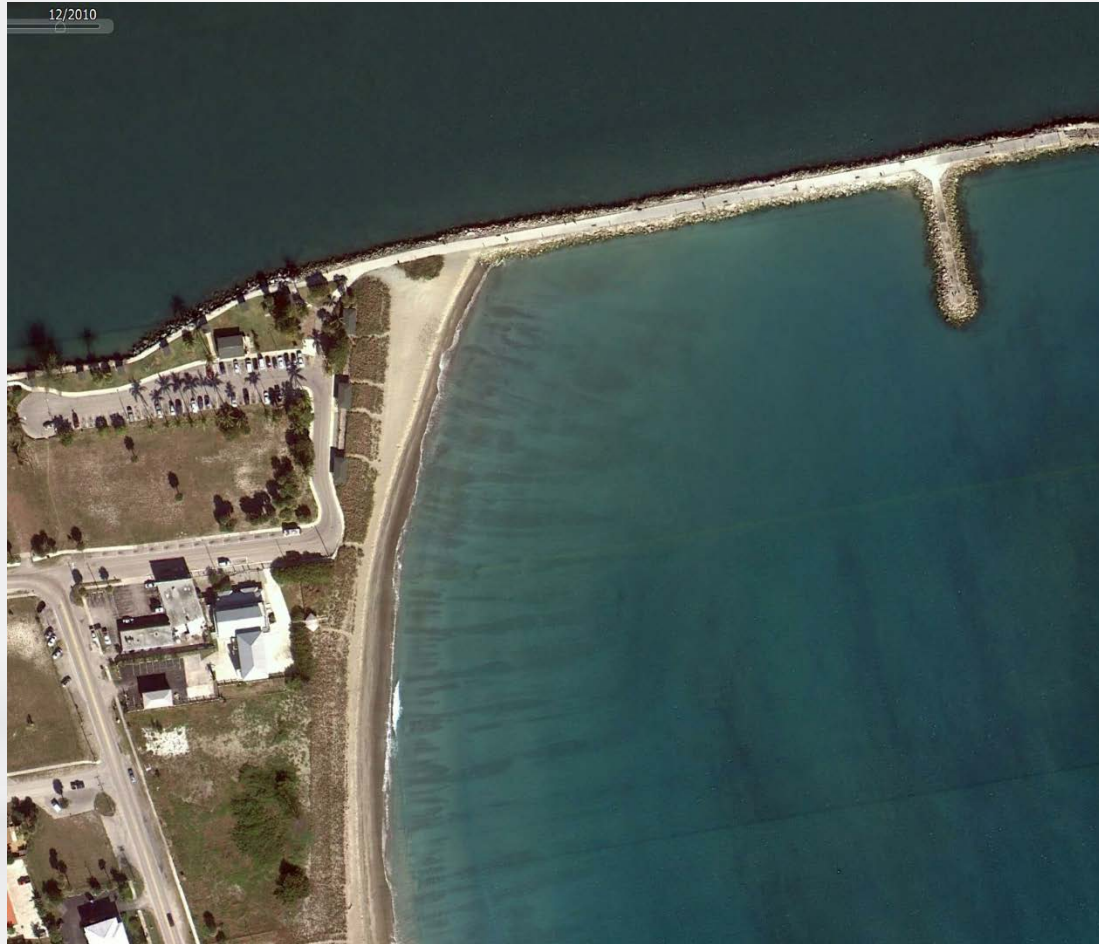


Beaches

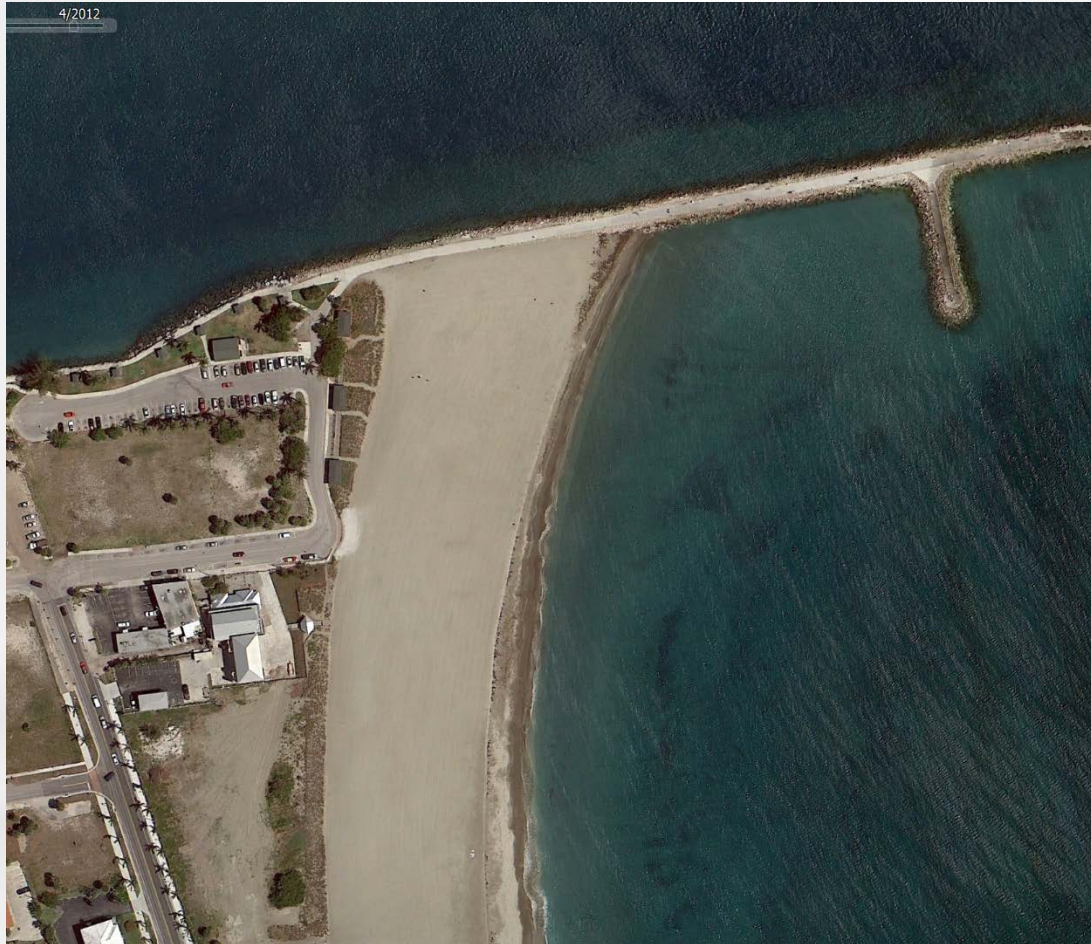
- Man made erosion



Beaches



Beaches



Beaches

- Mantoloking, NJ
- No recent Nourishment Before Sandy



Beaches

- Bethany Beach, DE
- Nourished:
 - 2005
 - 2007
 - 2011
 - 2013 – Post Sandy

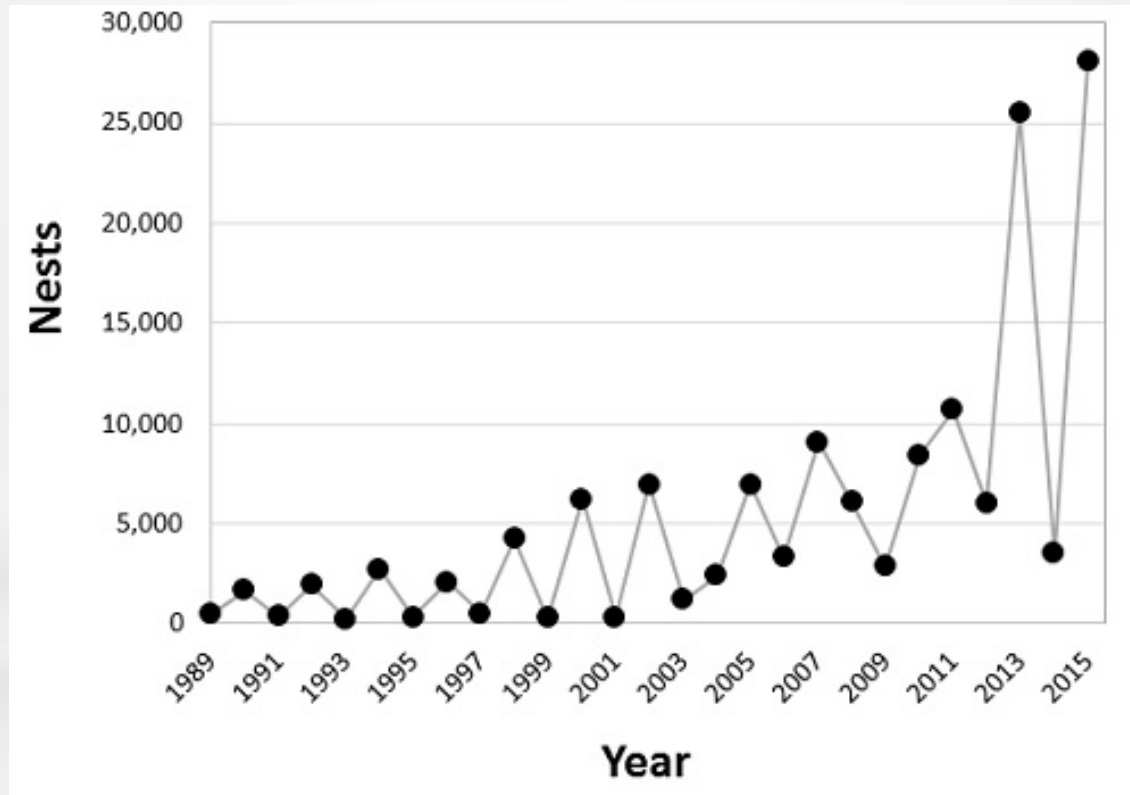


Endangered Species Habitat



Turtle Habitat

- Green Turtle Nests*



*Florida Fish & Wildlife Conservation Commission

Marshes

- Marshes in Louisiana sink an average of 1" / 2.5 years



Levee / Flood Protection



Environmental Clean up





Proud to be serving the nation's waterways since 1905

www.mansonconstruction.com

