

# PORTMIAMI



JUNE 2016

MIAMI HARBOR DEEPENING PROGRAM

PORTMIAMI

# Miami Harbor Deep Dredge Project



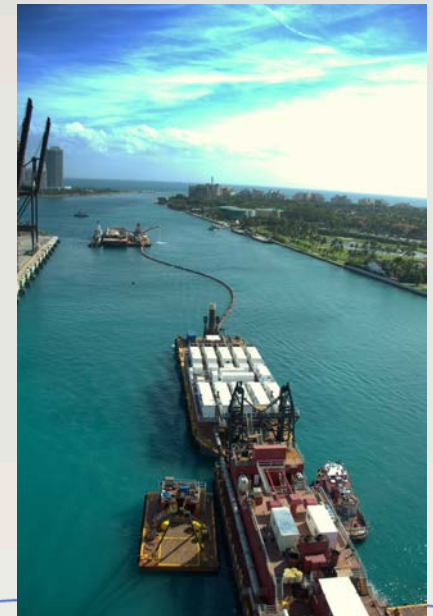
Base Contract	Option A	Option B
Widen seaward portion of Cut-1 from 500 to 800 feet; deepen Cut-1 and Cut-2 from <b>-44 to -52</b> feet; reef and seagrass mitigation area construction.	Cut 3 station 0 to Cut 3 station 12 and Fisherman's Channel Station 17 to Lummus Island Turning Basin end; deepen from <b>-42 to -50 feet</b>	Cut 3 station 12 to Fisherman's Channel station 17; Local sponsor berthing areas F.C. station 8 to 17; deepen from <b>-42 to -50</b> feet



# Project Scope

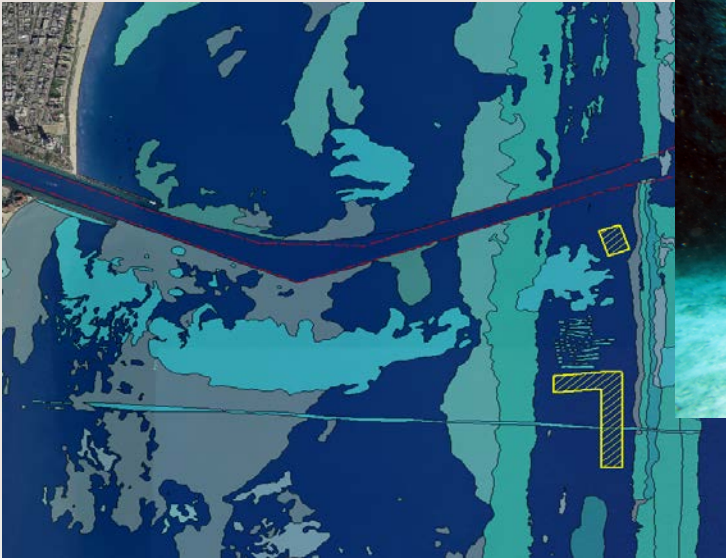
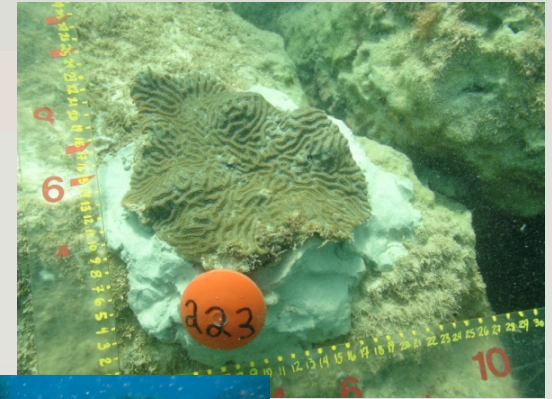


- **Approximately 5,150,000 CY of dredging**
  - EPA designated offshore disposal site
  - Beneficial re-use at former borrow site for seagrass mitigation
- **Estimate 4,000,000 CY of Rock**
- **Environmental Resource Monitoring**
- **Environmental Mitigation**
- **Approximately \$215M**  
(including over \$35M was environmental mitigation & environmental construction monitoring)



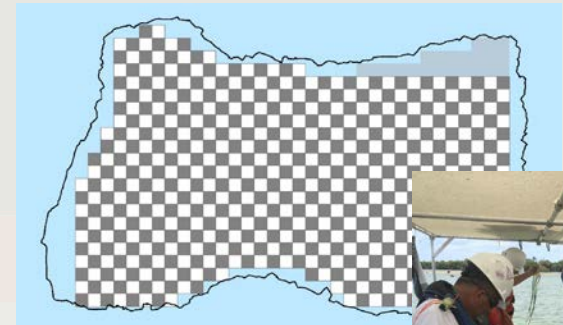
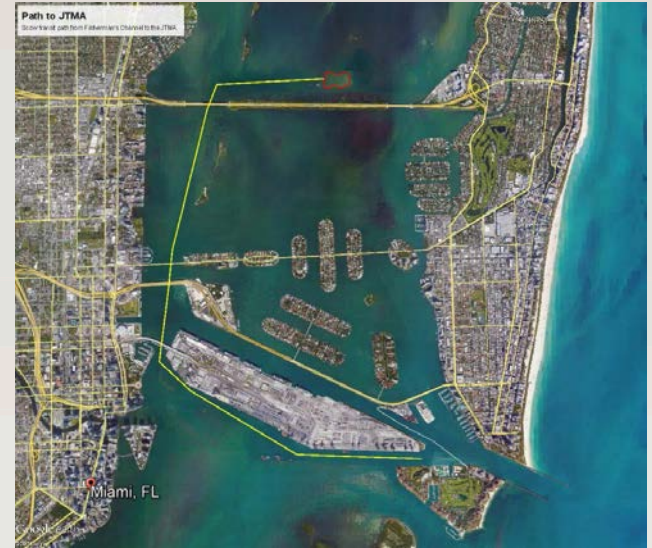
# Environmental Mitigation

- Over 11 acres Artificial Reef built.
- Over 1000 Corals relocated.
- 16.6 Acres Seagrass Restoration – beneficially reused 560,000 cubic yards dredge material



# Beneficial Re-use at the Julia Tuttle Seagrass Restoration Site

- 560,000 CY (1,192 scow trips/ 5.5 miles each way)
- Started Jan 28, 2014 completed Oct. 19, 2014 then select fill mined cap material
- 7 acres over 16.9 acre site planted with 290 plots in checkerboard layout, over 29,000 planting units



# Unique Challenges

- Nearly 100% Non-Federal Funding, advanced funding with Corps managing – Florida Sunshine Law
- Permit petitions, ESA lawsuits, local opposition from environmental groups.
- Unexpected discoveries.
- Temporary influence of massive infrastructure improvement project (marine vessel traffic, noise, sedimentation) has led to adaptive management implementation.



# Lessons Learned

- Stakeholder Engagement - not just a checklist
- Collaborative Effort – all agencies, stakeholders and contractors
- One team, one goal!





# Thank You



**PORTMIAMI**

For more information  
visit our website  
[www.miamidade.gov/portofmiami](http://www.miamidade.gov/portofmiami)