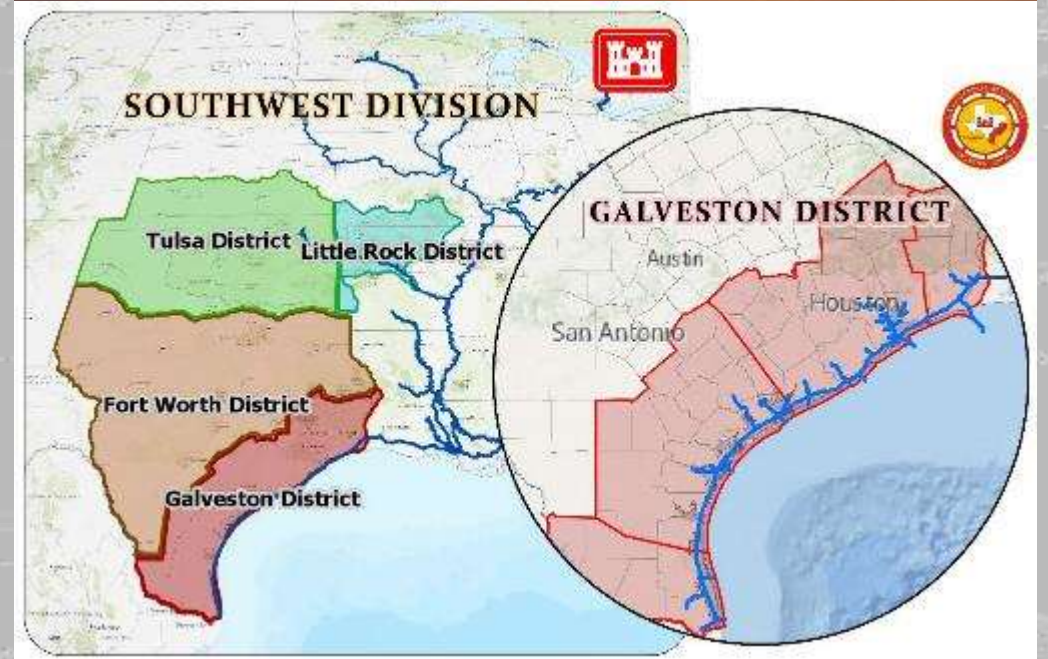


# FY20 CONTRACT SCHEDULES GALVESTON DISTRICT

Christopher Frabotta  
Deputy Chief, Operations  
Galveston District  
Southwestern Division  
Date: 13 November 2019

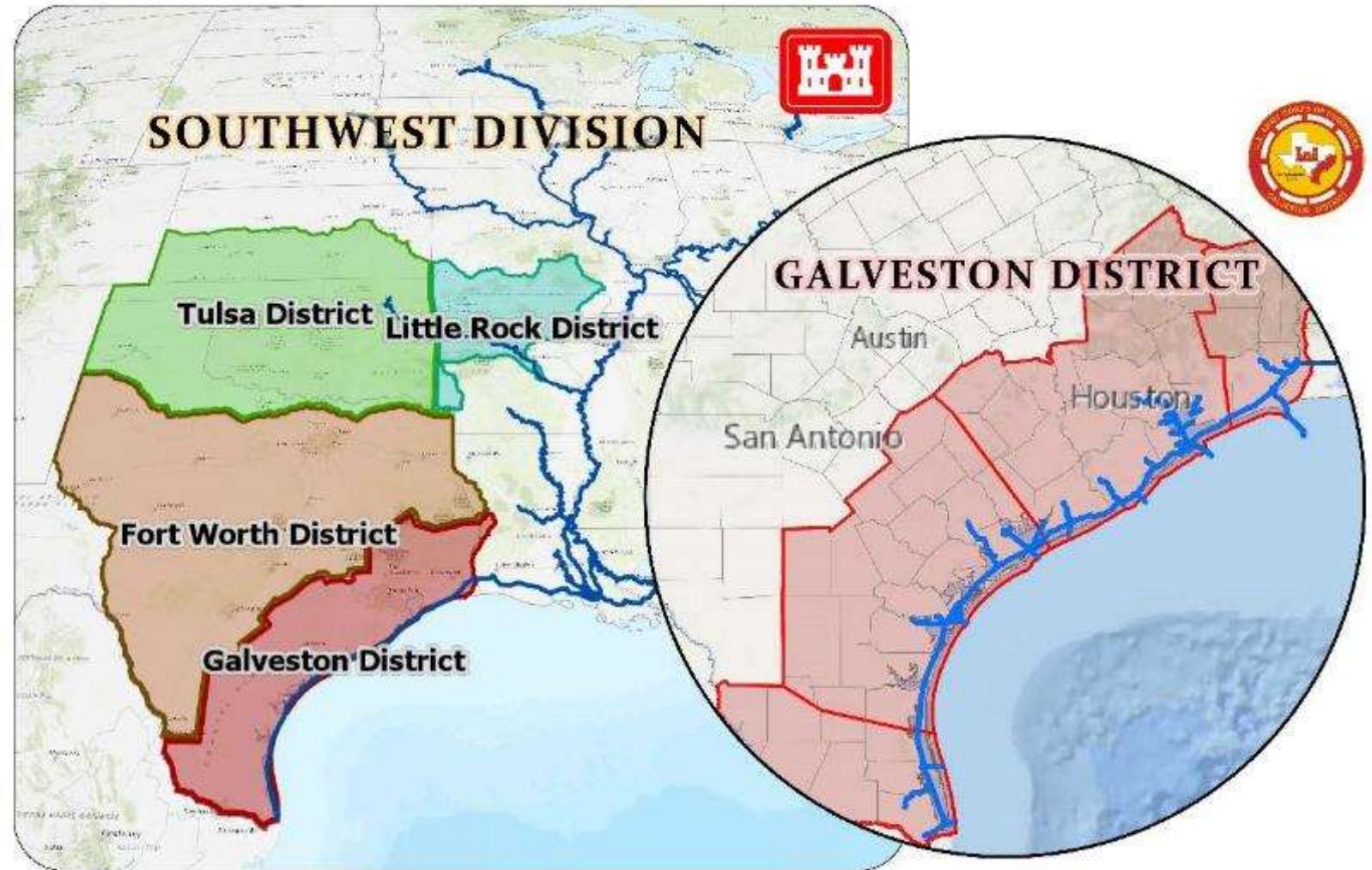


US Army Corps  
of Engineers®



## GALVESTON DISTRICT NAVIGATION PROJECTS

- 6 Deep-draft Navigation Complexes
- 1,000+ Miles of Deep- and shallow-draft channels
- 379-miles of GIWW
- 8 Jetty Systems
- 2 Sets of Nav Structures
- 3 Strategic Ports
- 600M+ tons of Commercial Cargo during 2017
- 20-30 million cubic yards / year
- 21.4% of Nation's Tonnage
- 29.2% of Nation's Exports
- 11.6% of Nation's Tonnage through Galveston Entrance





# SOUTHWESTERN DIVISION & GALVESTON DISTRICT POINTS-OF-CONTACT



**SOUTHWESTERN DIVISION**  
Elaine Newbaker-London  
Navigation Businessline Manager  
469-487-7050

[elaine.e.newbaker-london@usace.army.mil](mailto:elaine.e.newbaker-london@usace.army.mil)

**GALVESTON DISTRICT**  
Joe Hrametz  
Chief, Operations Division  
409-766-3070

[joseph.j.hrametz@usace.army.mil](mailto:joseph.j.hrametz@usace.army.mil)

**Chris Frabotta**  
Deputy Chief, Operations Division  
409-766-3071

[christopher.c.frabotta@usace.army.mil](mailto:christopher.c.frabotta@usace.army.mil)

**Tricia Campbell**  
Operations Manager  
409-766-3153

[tricia.c.campbell@usace.army.mil](mailto:tricia.c.campbell@usace.army.mil)

**Seth Jones**  
Operations Manager  
409-766-3068

[seth.w.jones@usace.army.mil](mailto:seth.w.jones@usace.army.mil)

**GALVESTON DISTRICT**  
Aron Edwards  
Operations Manager  
409-766-3028

[aron.s.edwards@usace.army.mil](mailto:aron.s.edwards@usace.army.mil)

**Belynda Kinman**  
Operations Manager  
409-766-6323

[belynda.m.kinman@usace.army.mil](mailto:belynda.m.kinman@usace.army.mil)

**Carlos Tate**  
Project Manager  
409-766-3819

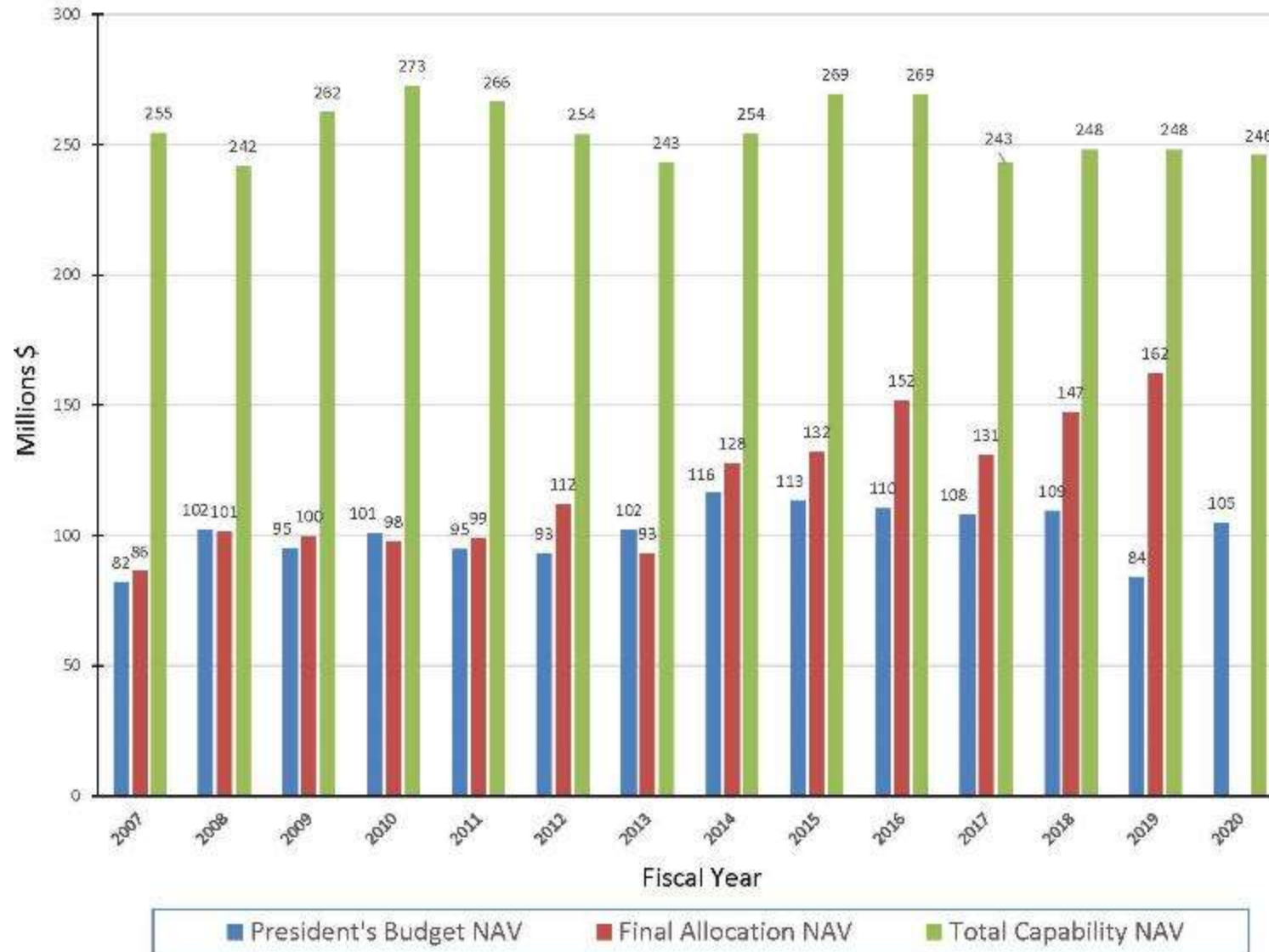
[carlos.d.tate@usace.army.mil](mailto:carlos.d.tate@usace.army.mil)

**Franchelle Craft**  
Project Manager  
409-766-3187

[franchelle.e.craft@usace.army.mil](mailto:franchelle.e.craft@usace.army.mil)

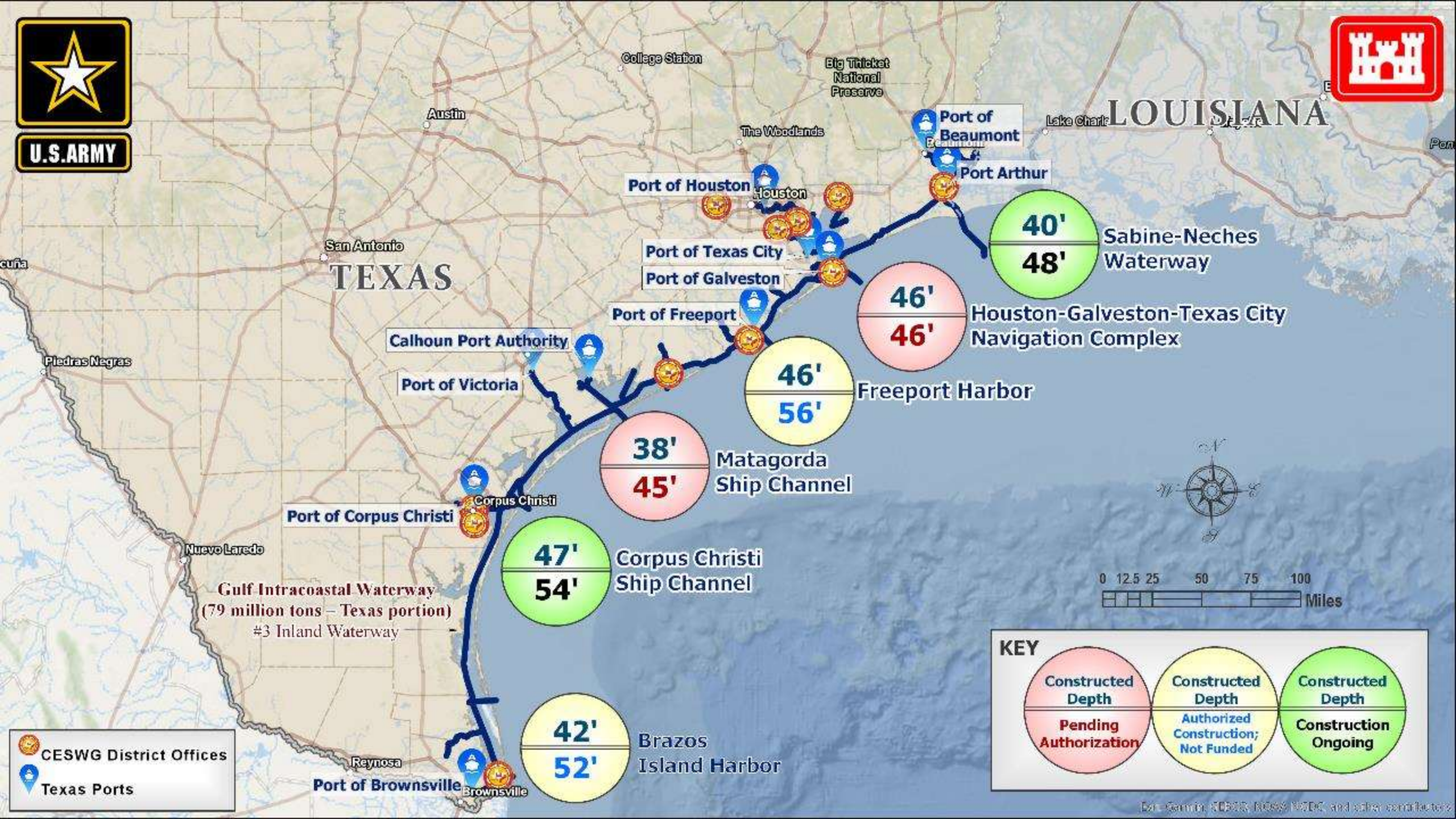


# GALVESTON DISTRICT O&M NAVIGATION FUNDING HISTORY





U.S. ARMY



TEXAS

LOUISIANA

Gulf Intracoastal Waterway  
(79 million tons – Texas portion)  
#3 Inland Waterway

40'  
48'

Sabine-Neches Waterway

46'  
46'

Houston-Galveston-Texas City Navigation Complex

46'  
56'

Freeport Harbor

38'  
45'

Matagorda Ship Channel

47'  
54'

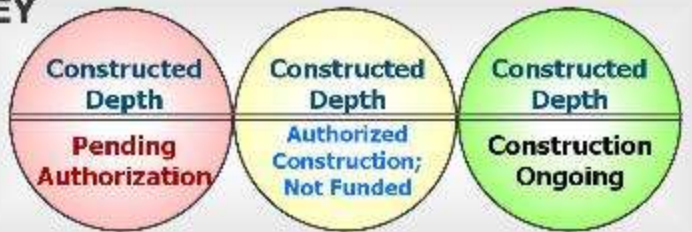
Corpus Christi Ship Channel

42'  
52'

Brazos Island Harbor



KEY



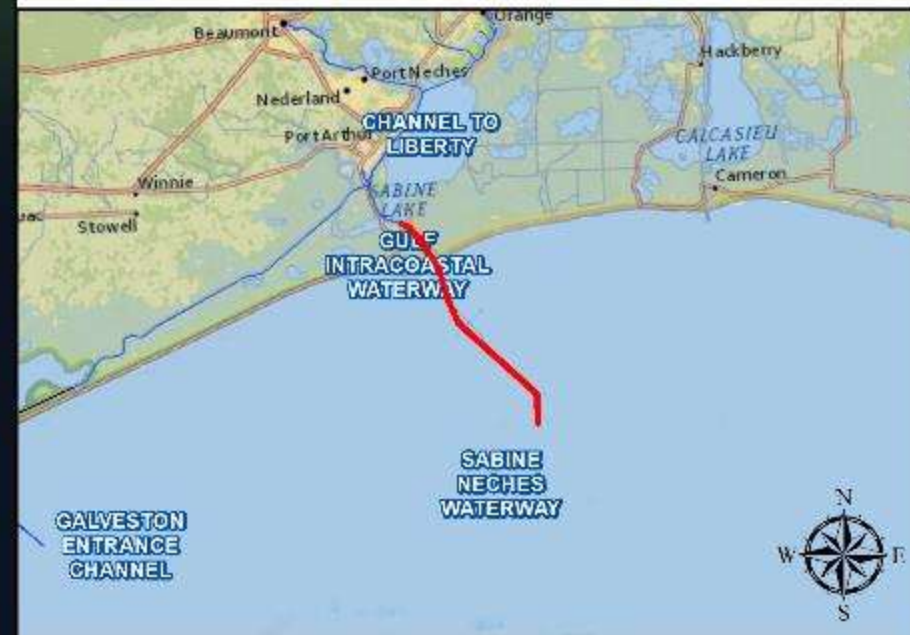
CESWG District Offices  
Texas Ports



# SABINE-NECHES WATERWAY



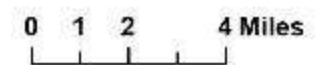
LOCATION: SNWW Maintenance Dredging (Outer Bar & Bank)
DREDGE TYPE: H,M
PLACEMENT: Offshore
QUANTITY: 3,835,000 cy
DEPTH: Offshore 42ft+2 / 40ft+2
ADVERTISE: 3/30/2020
BID OPENING: 4/29/2020
COMMENCE DREDGING: 6/22/2020
DREDGING COMPLETE: 12/19/2020
WORK RESTRICTIONS: NA



### Channel Framework

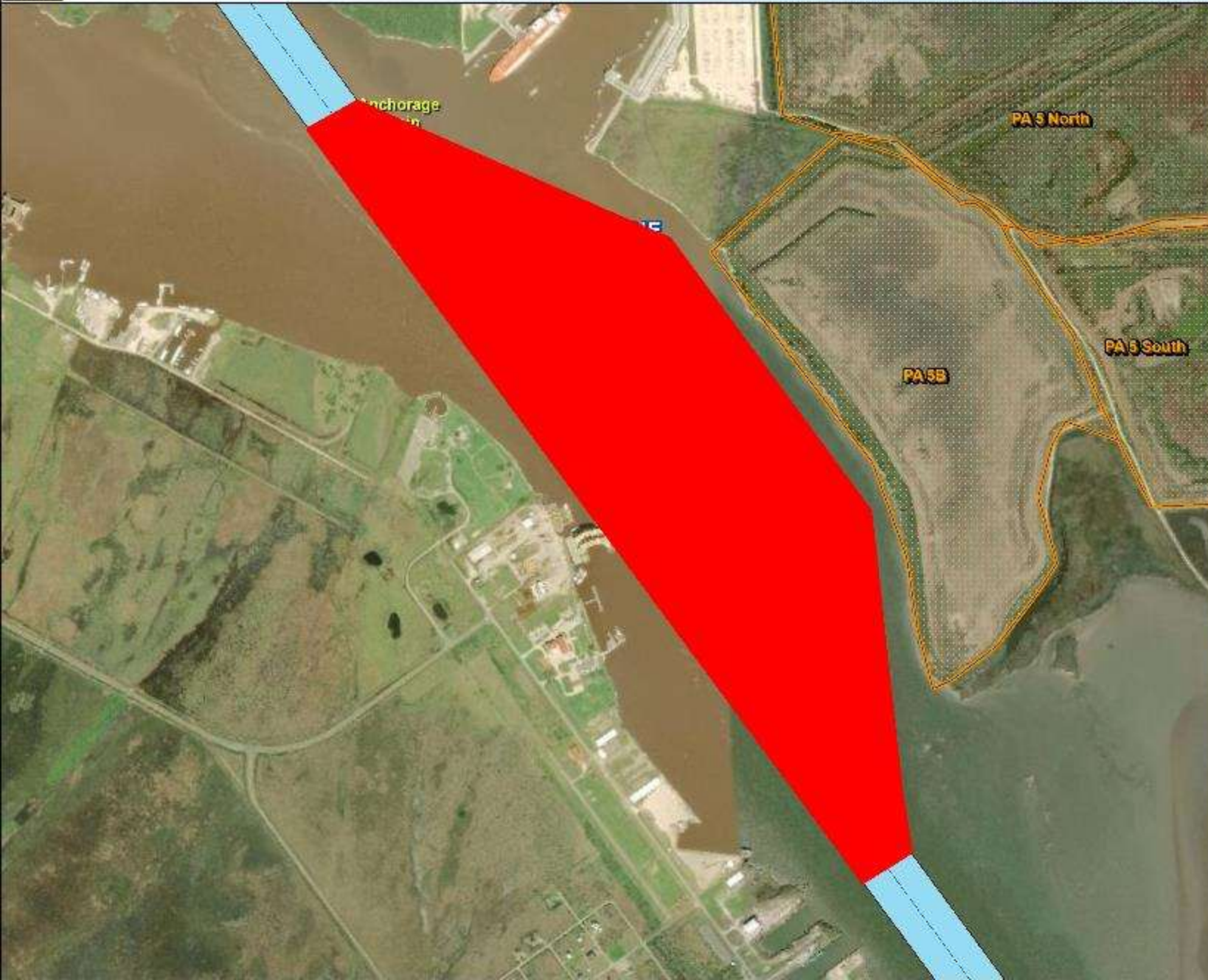
- Channel Centerline
- Navigation Channel
- Placemot Areas

Service Layer Credits: Content may not reflect National Geographic's current map policy. Sources: National Geographic, Esri, Garmin, HERE, UNEP-WCMC, USGS, NASA, ESA, METI, NRCAN, GEBCO, NOAA,





# SABINE-NECHES WATERWAY



<b>LOCATION:</b> Anchorage Basin #1 (New Work)
<b>DREDGE TYPE:</b> P
<b>PLACEMENT:</b> Upland
<b>QUANTITY:</b> 1,300,000 cy
<b>DEPTH:</b> 46 ft +2 ft
<b>ADVERTISE:</b> 10/8/2019
<b>BID OPENING:</b> 11/14/2019
<b>COMMENCE DREDGING:</b> 1/23/2020
<b>DREDGING COMPLETE:</b> 7/6/2020
<b>WORK RESTRICTIONS:</b> NA



### Channel Framework

- Channel Centerline
- Navigation Channel
- Placement Areas

Source Layer Credits: Content may not reflect National Geographic's current map policy. Sources: National Geographic, Esri, Garmin, HERE, UNEP-WCMC, USGS, NASA, ESA, METI, NRCAN, GEBCO, NOAA.





# SABINE-NECHES WATERWAY



LOCATION: Entrance Channel through Sabine Pass #2 (New Work)
DREDGE TYPE: H
PLACEMENT: Offshore
QUANTITY: 10,000,000 cy
DEPTH: 48ft+2
ADVERTISE: 5/15/2020
BID OPENING: 6/15/2020
COMMENCE DREDGING: 8/15/2020
DREDGING COMPLETE: 4/22/2021
WORK RESTRICTIONS: NA



### Channel Framework

- Channel Centerline
- Navigation Channel
- Placement Areas

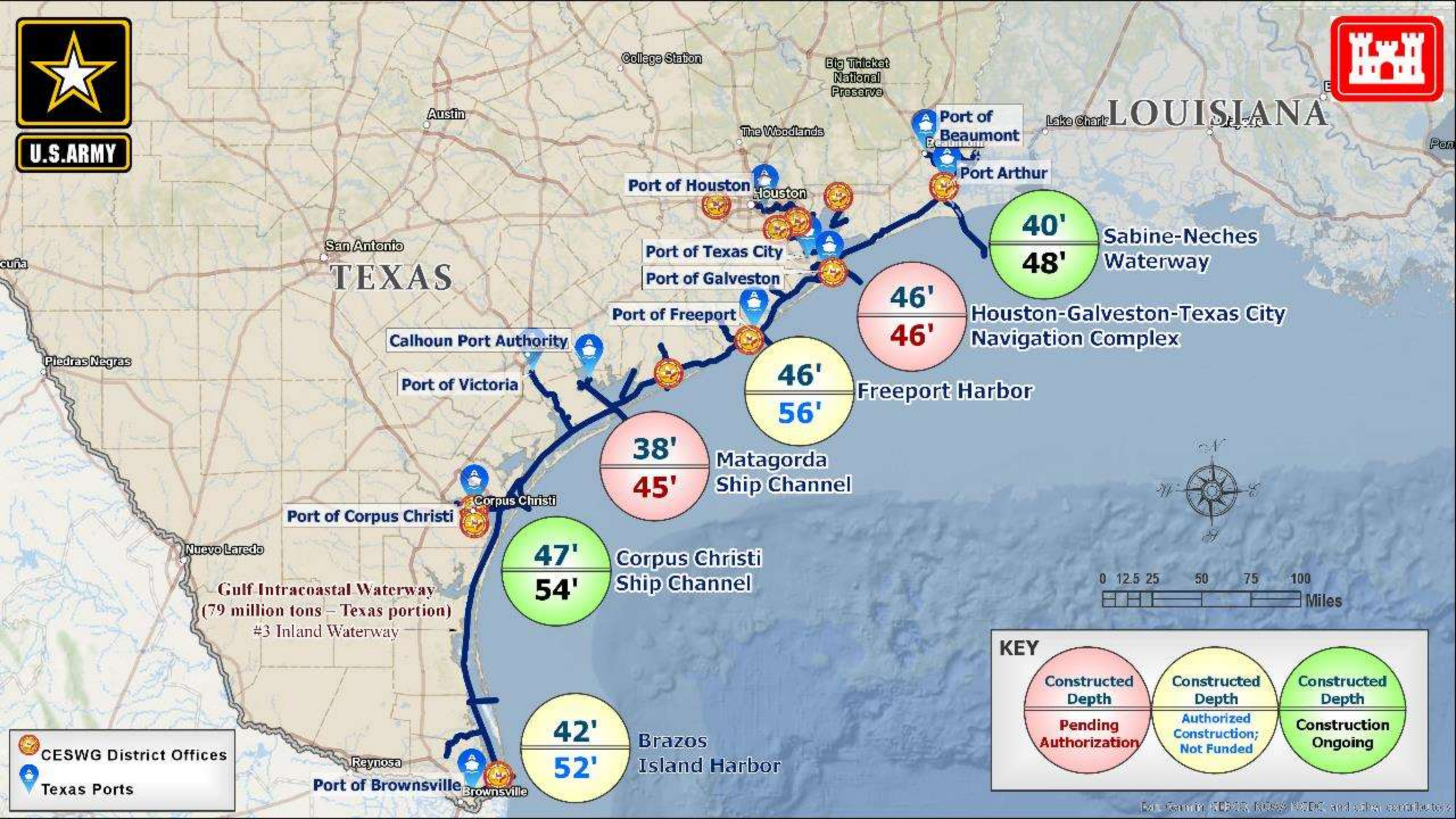
Service Layer Credits: Content may not reflect National Geographic's current map policy. Sources: National Geographic, Esri, Garmin, HERE, UNEP-WCMC, USGS, NASA, ESA, METI, NRCAN, GEBCO, NOAA.







U.S. ARMY



TEXAS

LOUISIANA

Gulf Intracoastal Waterway  
(79 million tons – Texas portion)  
#3 Inland Waterway

40'  
48'

Sabine-Neches Waterway

46'  
46'

Houston-Galveston-Texas City Navigation Complex

46'  
56'

Freeport Harbor

38'  
45'

Matagorda Ship Channel

47'  
54'

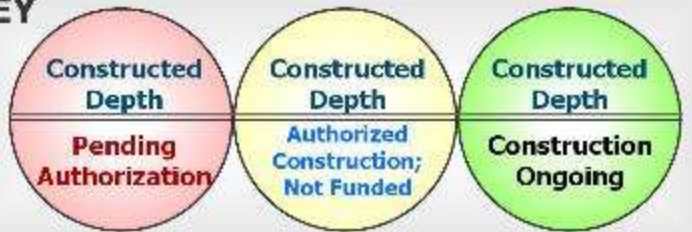
Corpus Christi Ship Channel

42'  
52'

Brazos Island Harbor



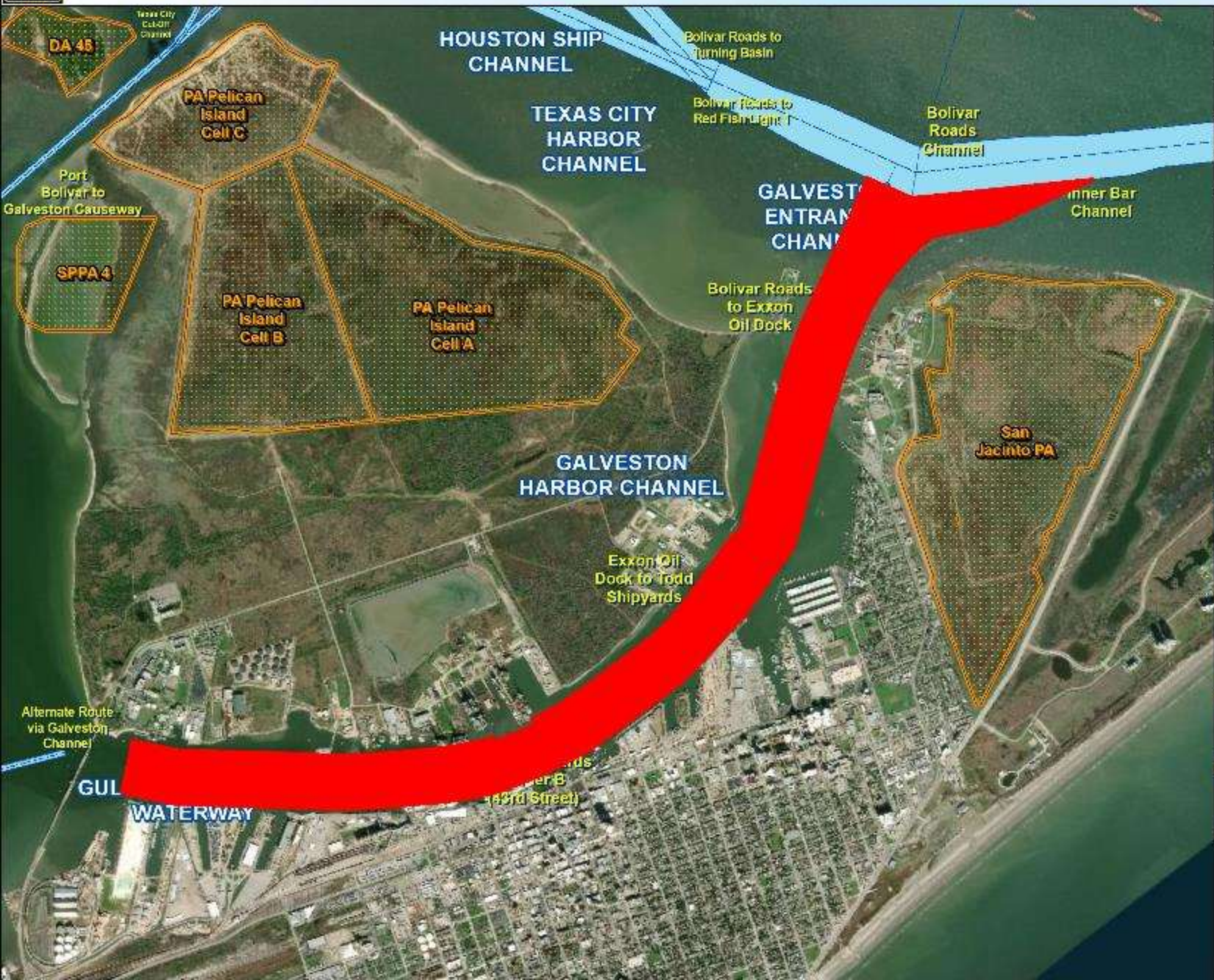
KEY



CESWG District Offices  
Texas Ports



# GALVESTON HARBOR



<b>LOCATION:</b> Galveston Harbor Maintenance & New Work
<b>DREDGE TYPE:</b> P,M
<b>PLACEMENT:</b> Upland
<b>QUANTITY:</b> 1,500,000 cy
<b>DEPTH:</b> 46 ft +2 ft
<b>ADVERTISE:</b> 5/7/2020
<b>BID OPENING:</b> 6/8/2020
<b>COMMENCE DREDGING:</b> 9/10/2020
<b>DREDGING COMPLETE:</b> 5/23/2021
<b>WORK RESTRICTIONS:</b> NA



### Channel Framework

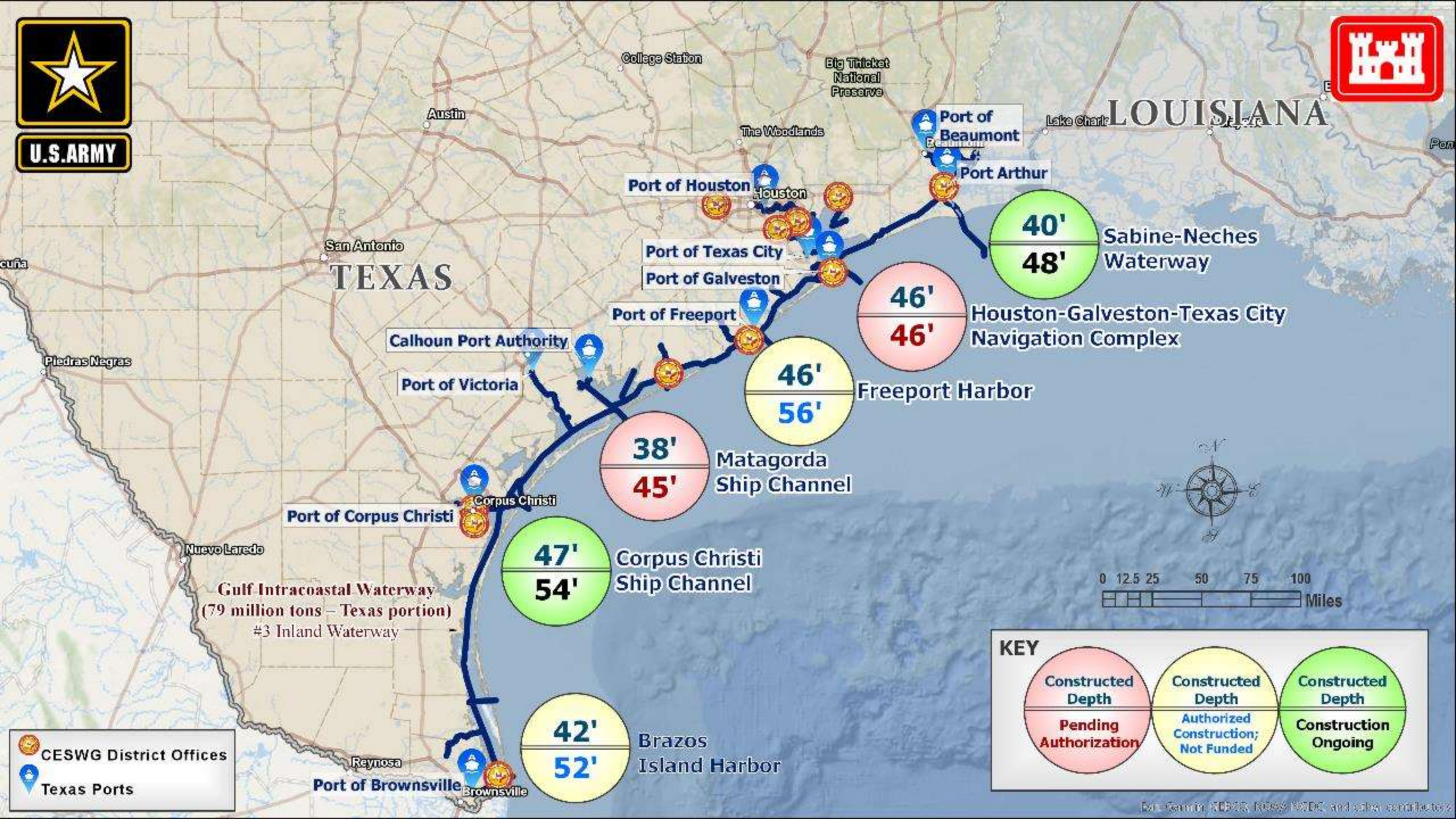
- Channel Centerline
- Navigation Channel
- Placement Areas

Source Layer Credits: Content may not reflect National Geographic's current map policy. Sources: National Geographic, Esri, Garmin, HERE, UNEP-WCMO, USGS, NASA, ESA, METI, NRCAN, GEBCO, NOAA.





U.S. ARMY



TEXAS

LOUISIANA

Gulf Intracoastal Waterway  
(79 million tons – Texas portion)  
#3 Inland Waterway

40'  
48'

Sabine-Neches Waterway

46'  
46'

Houston-Galveston-Texas City Navigation Complex

46'  
56'

Freeport Harbor

38'  
45'

Matagorda Ship Channel

47'  
54'

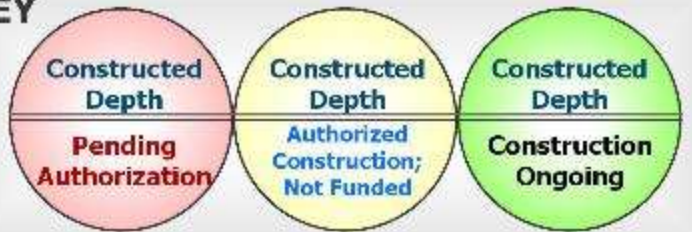
Corpus Christi Ship Channel

42'  
52'

Brazos Island Harbor



KEY



CESWG District Offices  
Texas Ports



# TEXAS CITY SHIP CHANNEL



<b>LOCATION:</b> Main Channel & Turning Basin
<b>DREDGE TYPE:</b> P
<b>PLACEMENT:</b> Upland
<b>QUANTITY:</b> 1,000,000 cy
<b>DEPTH:</b> 46 ft +2 ft
<b>ADVERTISE:</b> 3/30/2020
<b>BID OPENING:</b> 4/29/2020
<b>COMMENCE DREDGING:</b> 6/22/2020
<b>DREDGING COMPLETE:</b> 11/19/2020
<b>WORK RESTRICTIONS:</b> NA



### Channel Framework

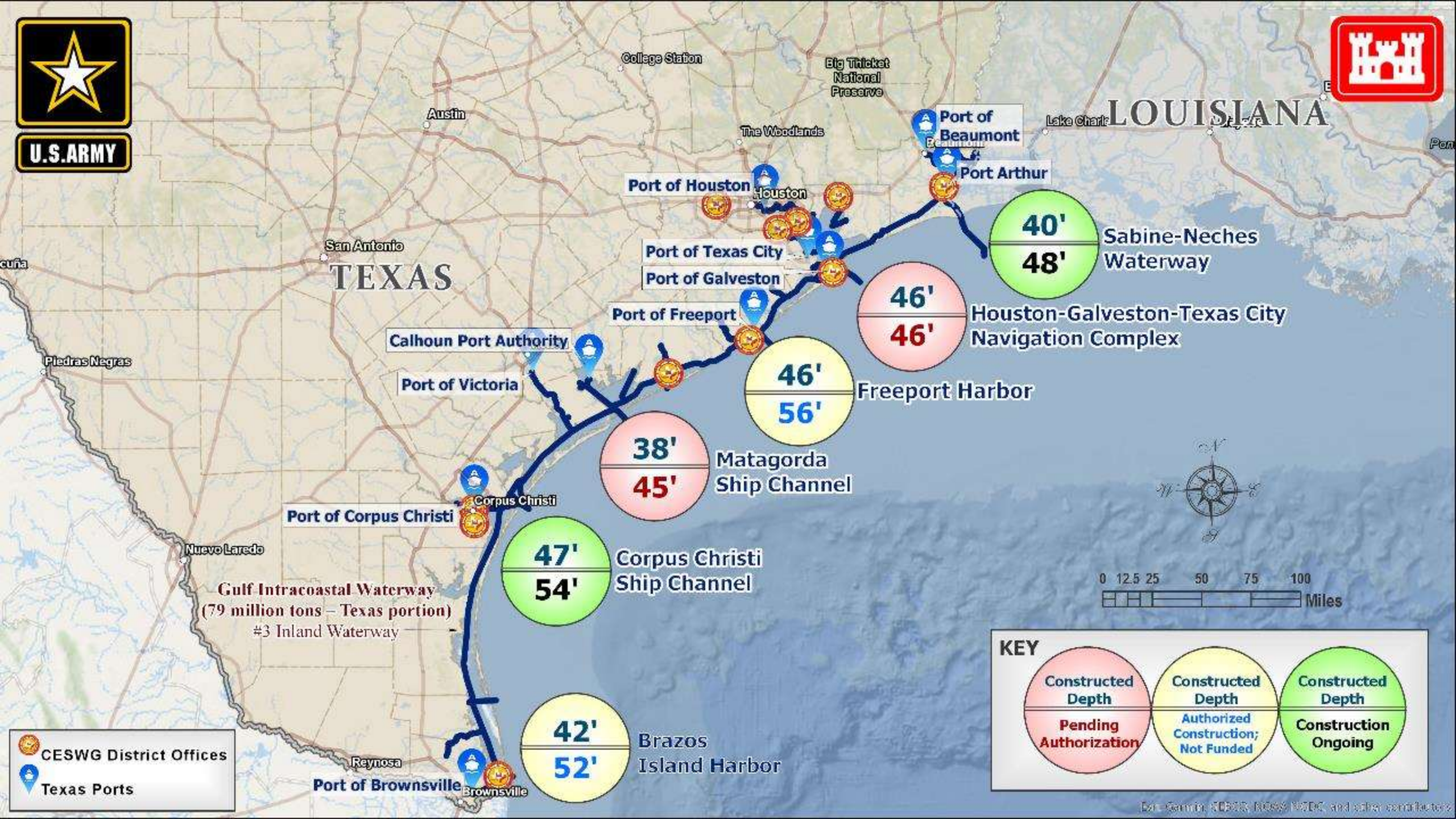
- Channel Centerline
- Navigation Channel
- Placement Areas

Source Layer Credits: Content may not reflect National Geographic's current map policy. Sources: National Geographic, Esri, Garmin, HERE, UNEP-WCMC, USGS, NASA, ESA, METI, NRCAN, GEBCO, NOAA.





U.S. ARMY



TEXAS

LOUISIANA

Gulf Intracoastal Waterway  
(79 million tons – Texas portion)  
#3 Inland Waterway

40'  
48'

Sabine-Neches  
Waterway

46'  
46'

Houston-Galveston-Texas City  
Navigation Complex

46'  
56'

Freeport Harbor

38'  
45'

Matagorda  
Ship Channel

47'  
54'

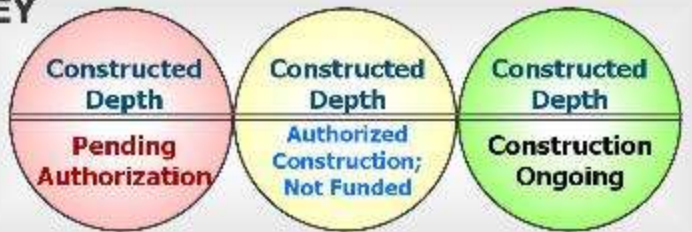
Corpus Christi  
Ship Channel

42'  
52'

Brazos  
Island Harbor



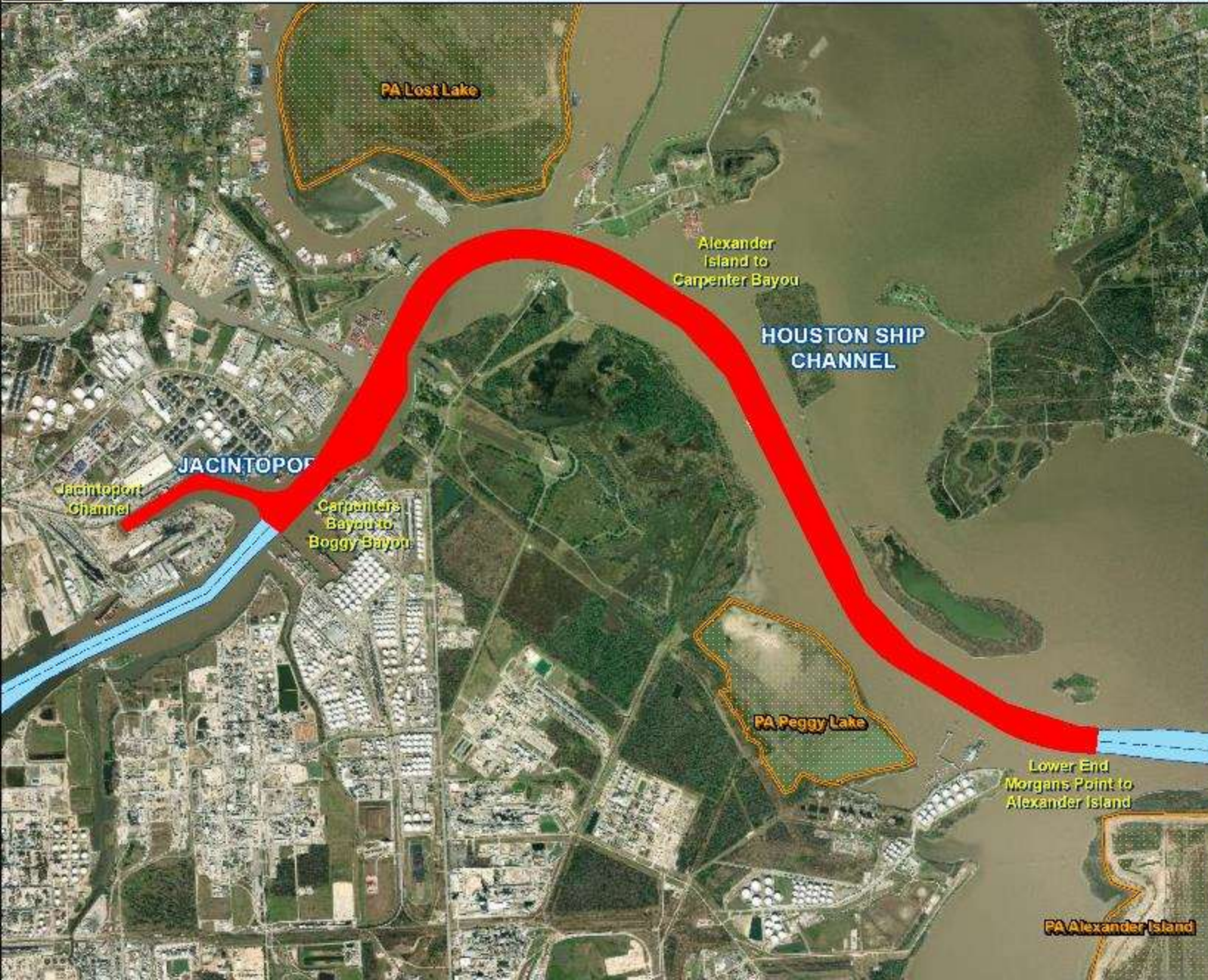
KEY



CESWG District Offices  
Texas Ports



# HOUSTON SHIP CHANNEL



**LOCATION:** Exxon to Carperterers and Jacintoport

**DREDGE TYPE:** P

**PLACEMENT:** Upland

**QUANTITY:** 1,500,000 cy

**DEPTH:** 46.5 ft + 2 ft

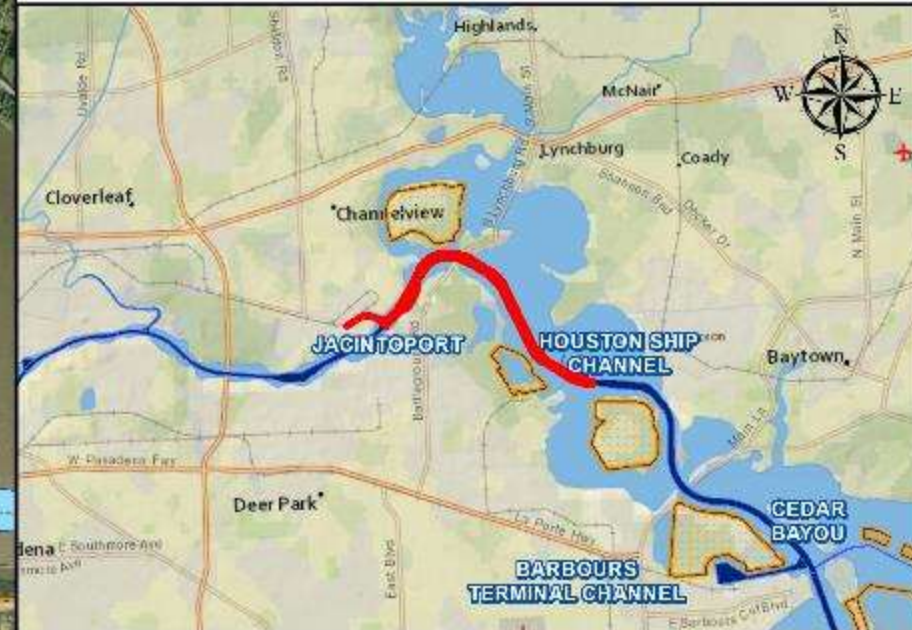
**ADVERTISE:** 6/5/2020

**BID OPENING:** 8/7/2020

**COMMENCE DREDGING:** 10/8/2020

**DREDGING COMPLETE:** 6/20/2021

**WORK RESTRICTIONS:** NA



### Channel Framework

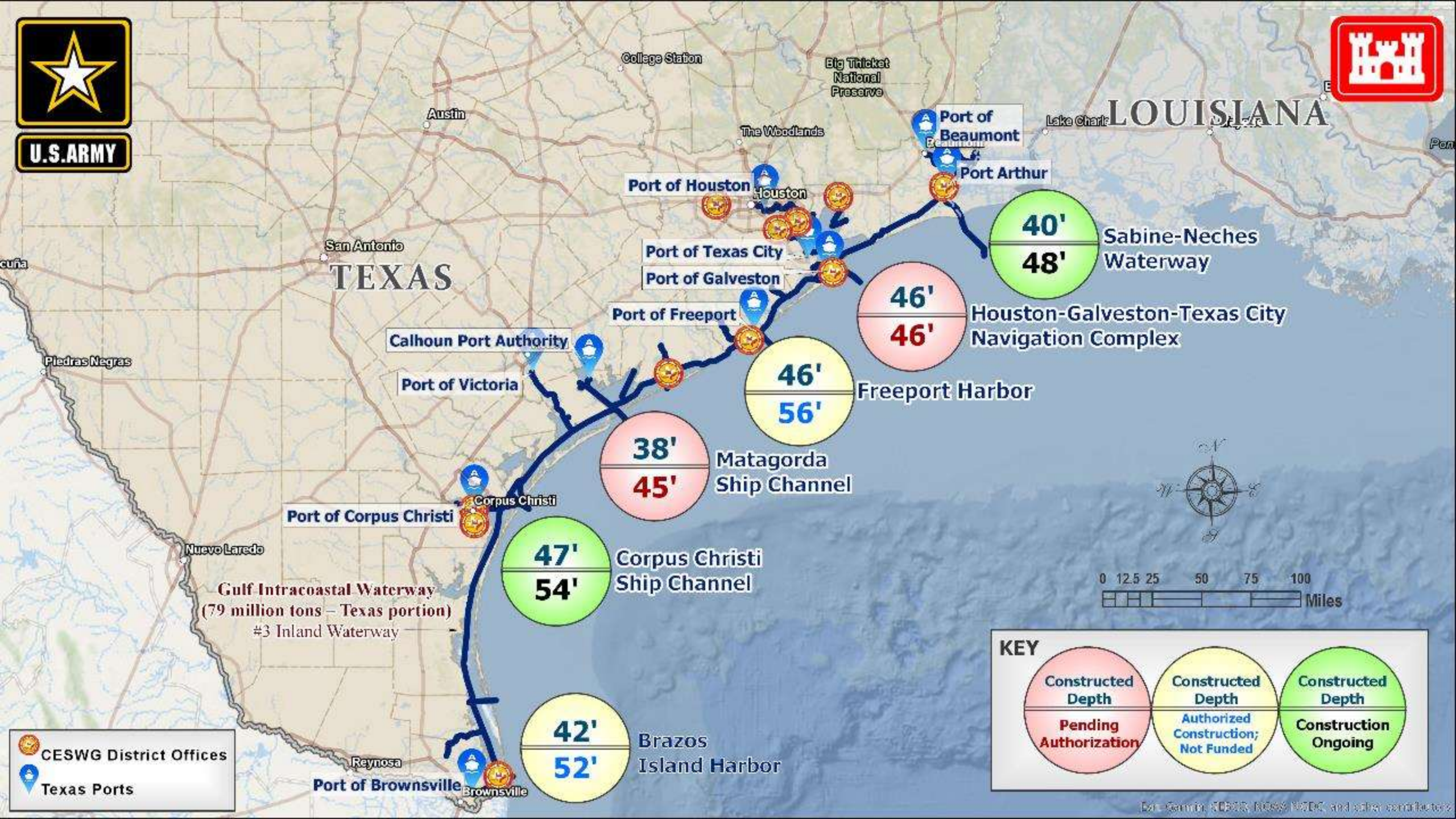
- Channel Centerline
- Navigation Channel
- Placement Areas

Service Layer Credits: Content may not reflect National Geographic's current map policy. Sources: National Geographic, Esri, Garmin, HERE, UNEP-WCMC, USGS, NASA, ESA, METI, NRCAN, GEBCO, NOAA.

0 0.25 0.5 1 Miles



U.S. ARMY



**KEY**

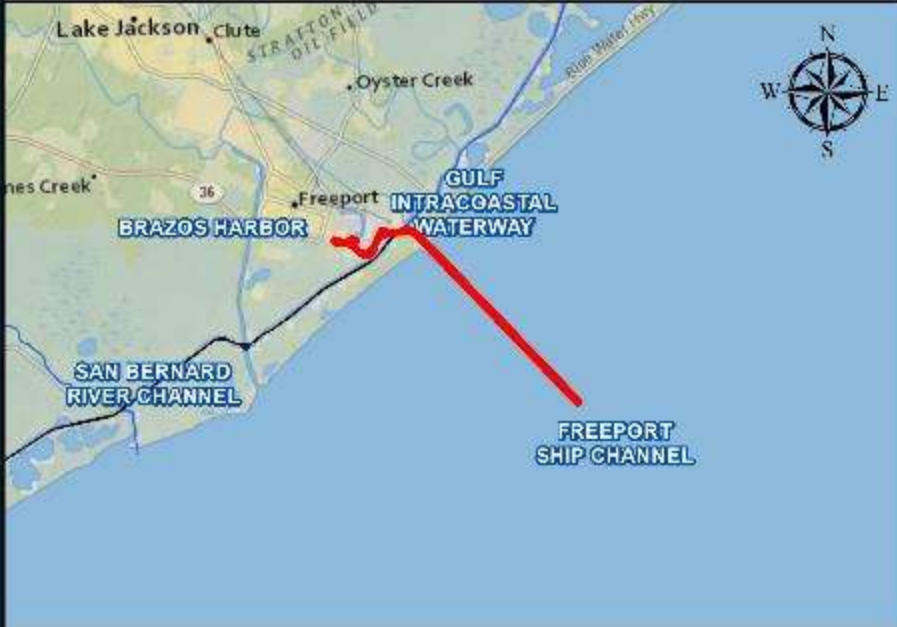
Constructed Depth	Constructed Depth	Constructed Depth
Pending Authorization	Authorized Construction; Not Funded	Construction Ongoing



# FREEPORT HARBOR



LOCATION: Jetty Channel and Inside Channel (TASK ORDER)
DREDGE TYPE: H
PLACEMENT: ODMDS
QUANTITY: 1,800,000 cy
DEPTH: 47 ft + 2 ft
ADVERTISE:
BID OPENING:
COMMENCE DREDGING: 8/7/2020
DREDGING COMPLETE: 12/5/2020
WORK RESTRICTIONS: NA



### Channel Framework

- Channel Centerline
- Navigation Channel
- Placement Areas

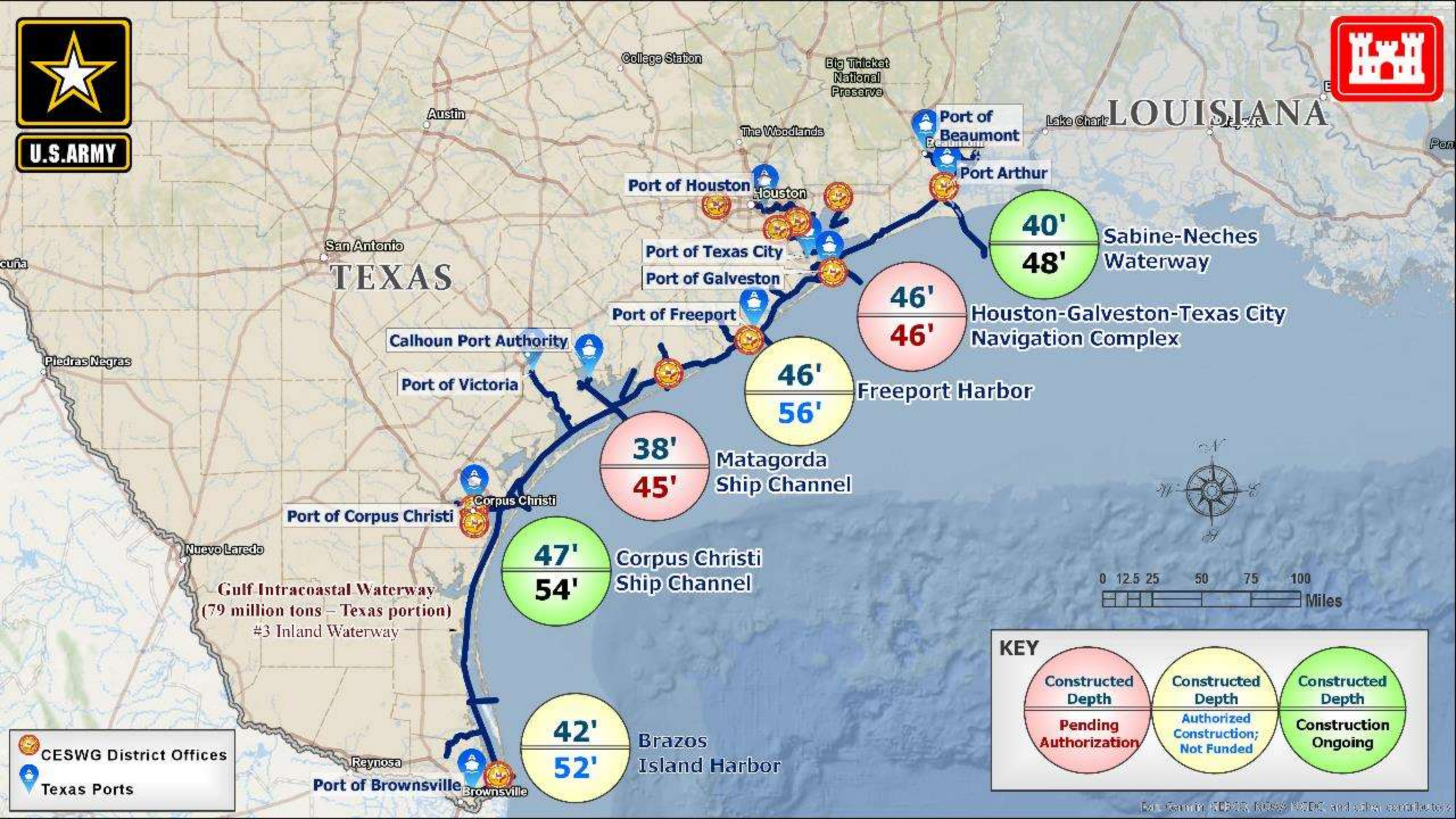
Service Layer Credits: Content may not reflect National Geographic's current map policy. Sources: National Geographic, Esri, Garmin, HERE, UNEP-WCMC, USGS, NASA, ESA, METI, NRCAN, GEBCO, NOAA,







U.S. ARMY



TEXAS

LOUISIANA

Gulf Intracoastal Waterway  
(79 million tons – Texas portion)  
#3 Inland Waterway

40'  
48'

Sabine-Neches  
Waterway

46'  
46'

Houston-Galveston-Texas City  
Navigation Complex

46'  
56'

Freeport Harbor

38'  
45'

Matagorda  
Ship Channel

47'  
54'

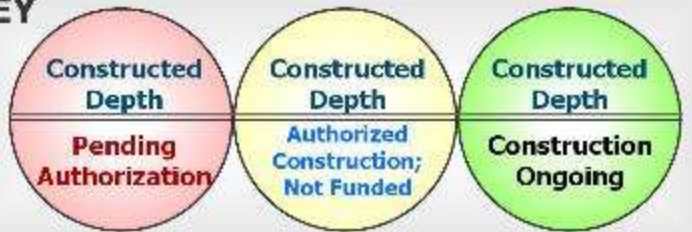
Corpus Christi  
Ship Channel

42'  
52'

Brazos  
Island Harbor



KEY



CESWG District Offices  
Texas Ports



# MATAGORDA SHIP CHANNEL



**LOCATION:** Matagorda Pen. To Point Comfort

**DREDGE TYPE:** P

**PLACEMENT:** Open Water

**QUANTITY:** 3,500,000 cy

**DEPTH:** 38 ft + 2 ft

**ADVERTISE:** 2/27/2020

**BID OPENING:** 3/27/2020

**COMMENCE DREDGING:** 5/1/2020

**DREDGING COMPLETE:** 9/23/2020

**WORK RESTRICTIONS:** NA



### Channel Framework

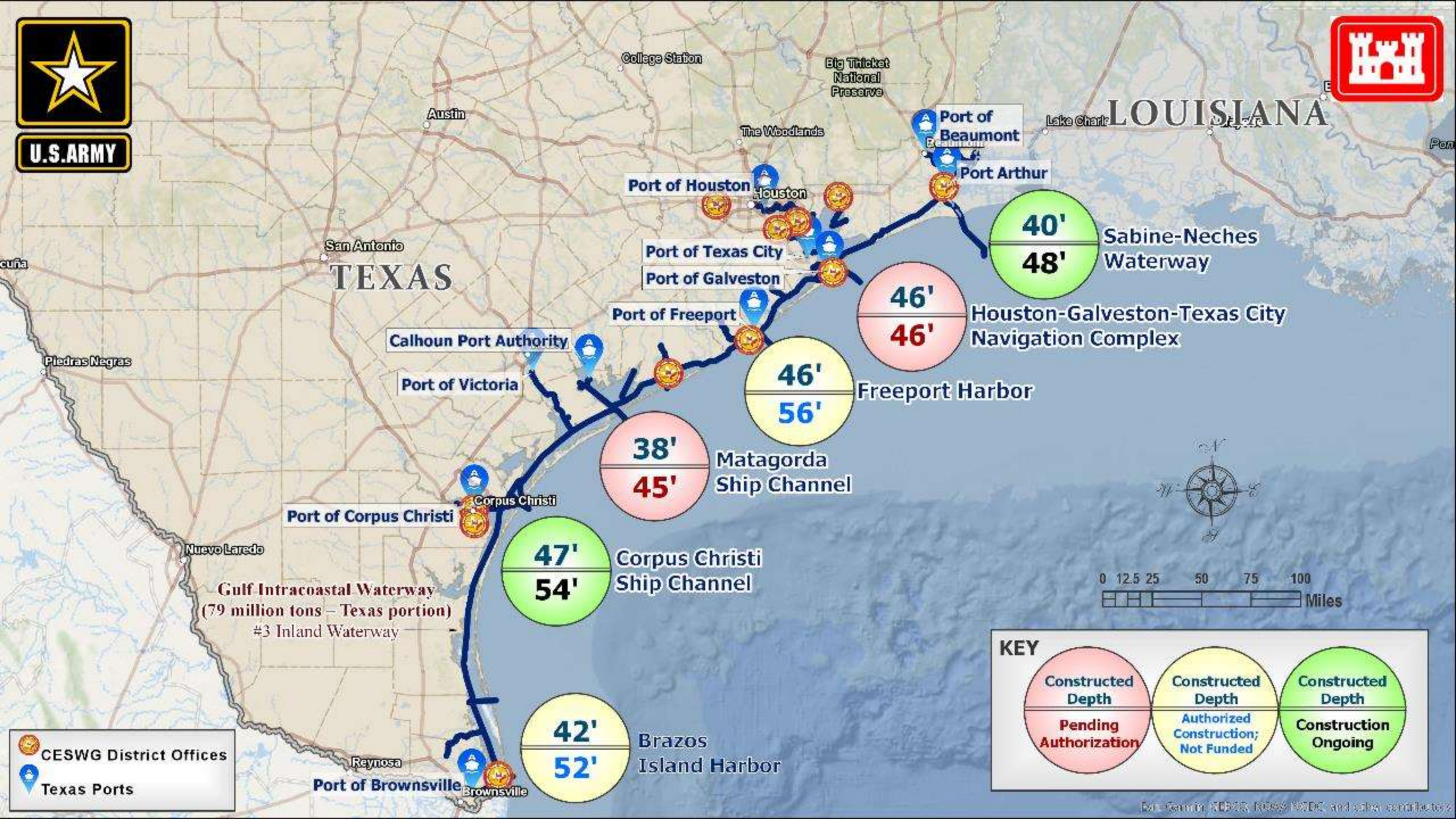
- Channel Centerline
- Navigation Channel
- Placement Areas

Source Layer Credits: Content may not reflect National Geographic's current map policy. Sources: National Geographic, Esri, Garmin, HERE, UNEP-WCMC, USGS, NASA, ESA, METI, NRCAN, GEBCO, NOAA.





U.S. ARMY



TEXAS

LOUISIANA

Gulf Intracoastal Waterway  
(79 million tons – Texas portion)  
#3 Inland Waterway

40'  
48'

Sabine-Neches Waterway

46'  
46'

Houston-Galveston-Texas City Navigation Complex

46'  
56'

Freeport Harbor

38'  
45'

Matagorda Ship Channel

47'  
54'

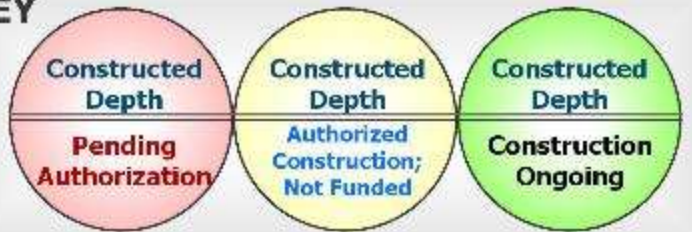
Corpus Christi Ship Channel

42'  
52'

Brazos Island Harbor



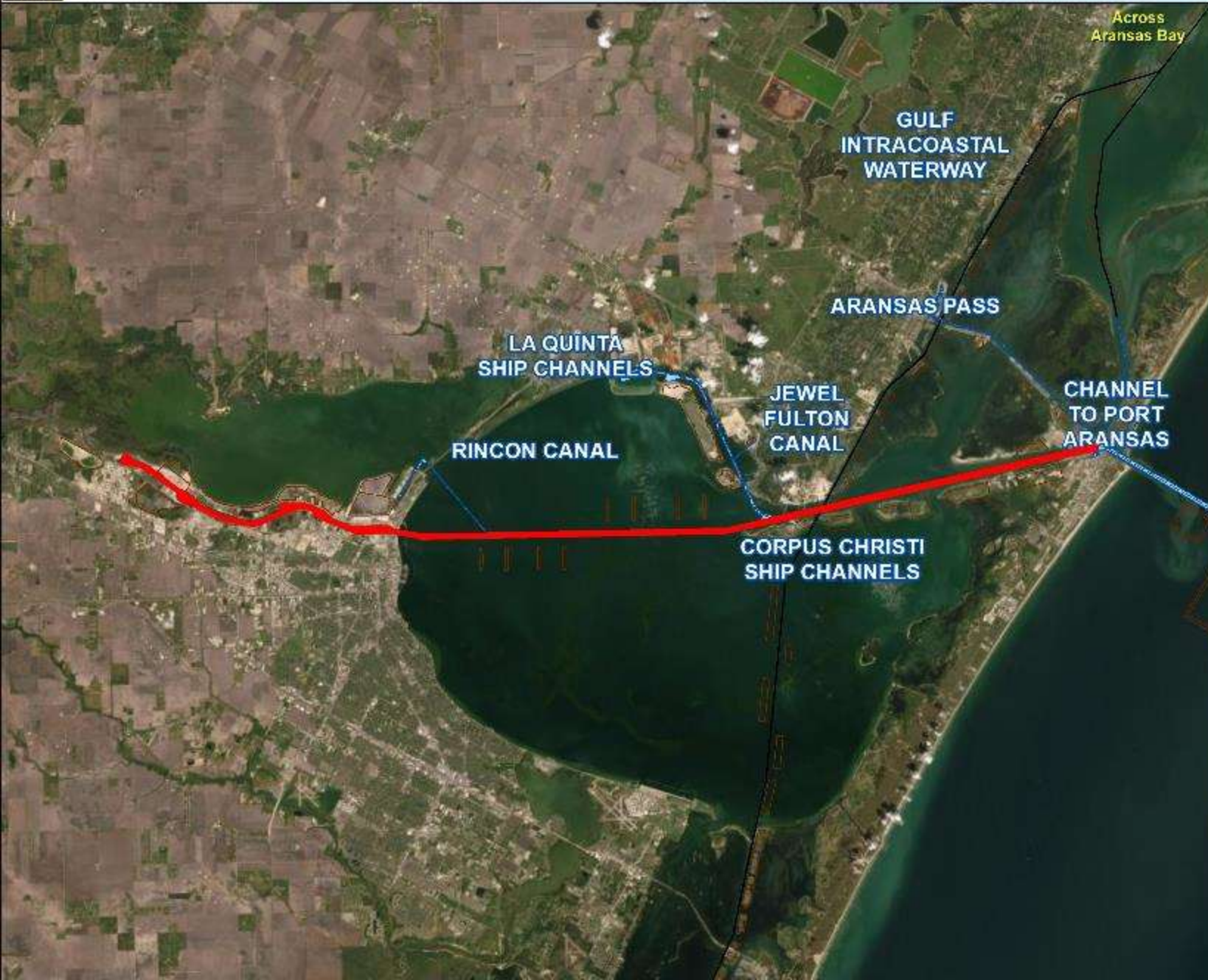
KEY



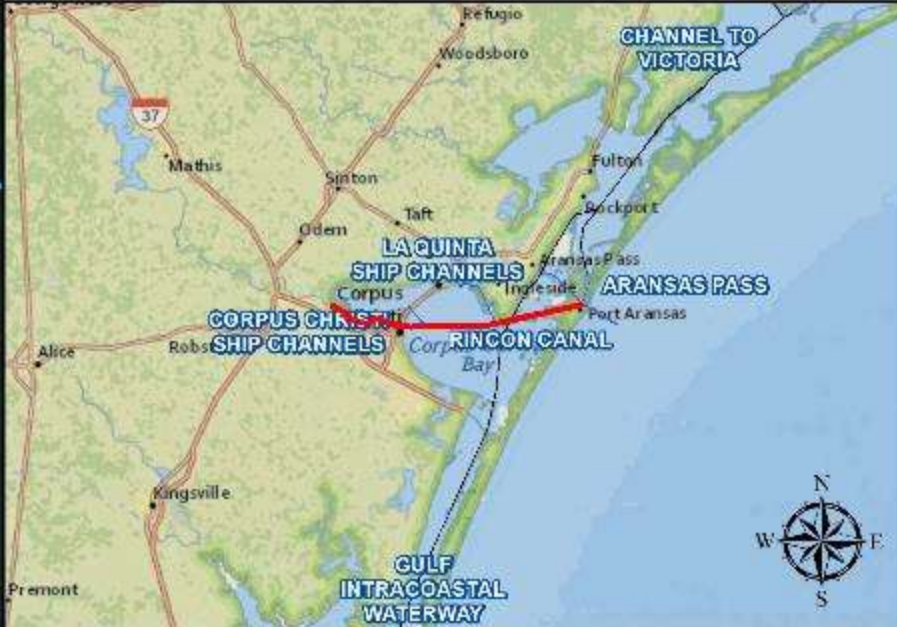
CESWG District Offices  
Texas Ports



# CORPUS CHRISTI SHIP CHANNEL



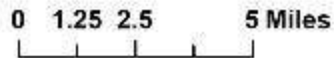
<b>LOCATION:</b> Inner Basin to Viola
<b>DREDGE TYPE:</b> P
<b>PLACEMENT:</b> Open & Upland Confined
<b>QUANTITY:</b> 1,576,000 cy
<b>DEPTH:</b> 49 ft + 2 ft
<b>ADVERTISE:</b> 6/24/2019
<b>BID OPENING:</b> 7/24/2019
<b>COMMENCE DREDGING:</b> 1/9/2020
<b>DREDGING COMPLETE:</b> 1/1/2021
<b>WORK RESTRICTIONS:</b> NA



### Channel Framework

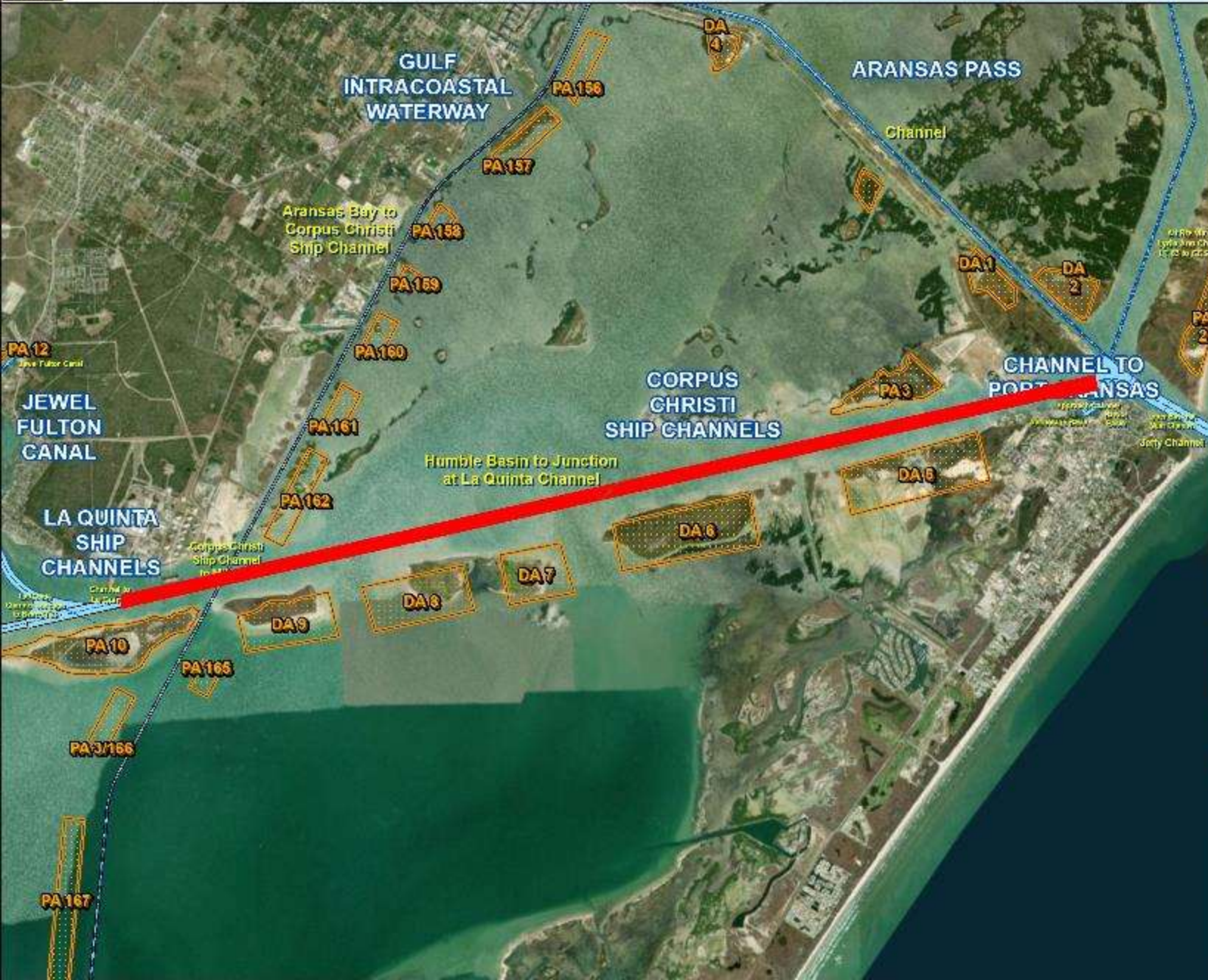
- Channel Centerline
- Navigation Channel
- Placement Areas

Service Layer Credits: Content may not reflect National Geographic's current map policy. Sources: National Geographic, Esri, Garmin, HERE, UNEP-WCMC, USGS, NASA, ESA, METI, NRCAN, GEBCO, NOAA.

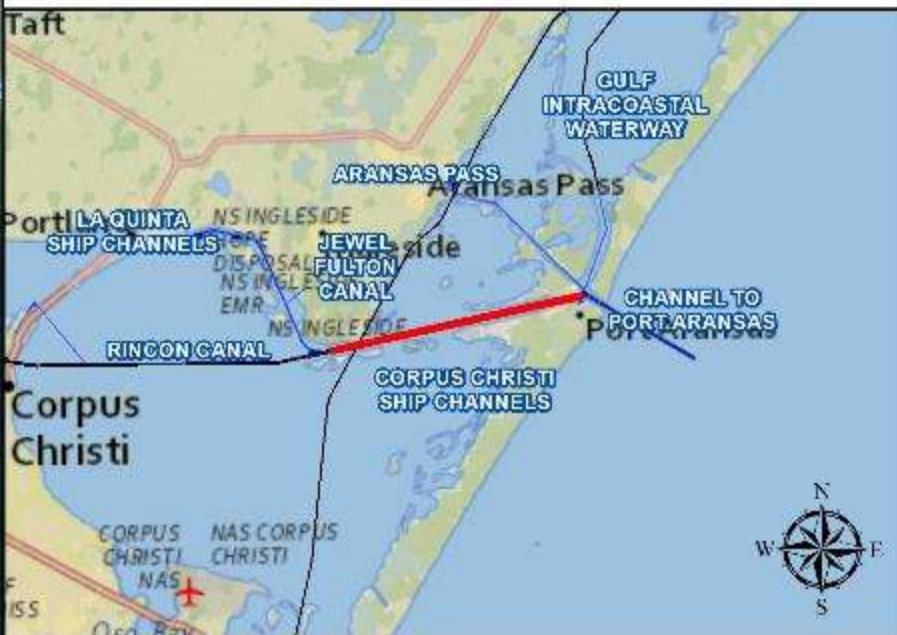




# CORPUS CHRISTI SHIP CHANNEL



LOCATION: Channel Improvement Project (Contract #2 Lower Bay Reach)
DREDGE TYPE: P
PLACEMENT: BU & Upland Confined
QUANTITY: 12,000,000 cy
DEPTH: 56/57 ft + 2 ft/1 ft
ADVERTISE: 12/6/2019
BID OPENING: 1/5/2020
COMMENCE DREDGING: 5/30/2020
DREDGING COMPLETE: 8/8/2022
WORK RESTRICTIONS: NA



### Channel Framework

- Channel Centerline
- Navigation Channel
- Placement Areas

Service Layer Credits: Content may not reflect National Geographic's current map policy. Sources: National Geographic, Esri, Garmin, HERE, UNEP-WCMC, USGS, NASA, ESA, METI, NRCAN, GEBCO, NOAA.

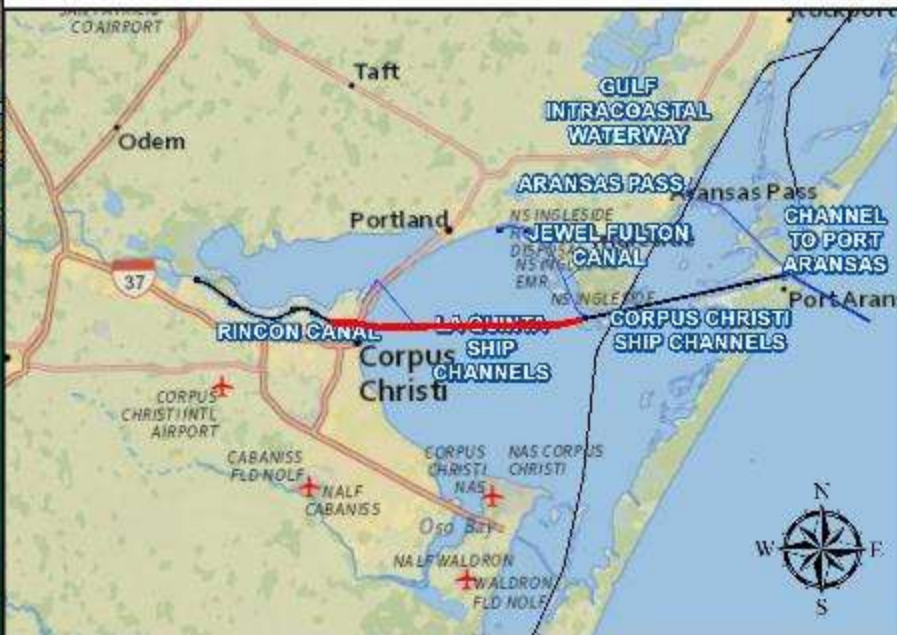




# CORPUS CHRISTI SHIP CHANNEL



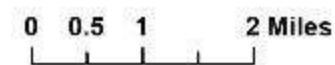
LOCATION: Channel Improvement Project (Contract #3 Upper Bay Reach)
DREDGE TYPE: P
PLACEMENT: BU, Upland and Open Water
QUANTITY: 18,000,000 cy
DEPTH: 56/57 ft + 2 ft/1ft
ADVERTISE: 6/30/2020
BID OPENING: 7/30/2020
COMMENCE DREDGING: 12/30/2020
DREDGING COMPLETE: 8/22/2022
WORK RESTRICTIONS: NA



## Channel Framework

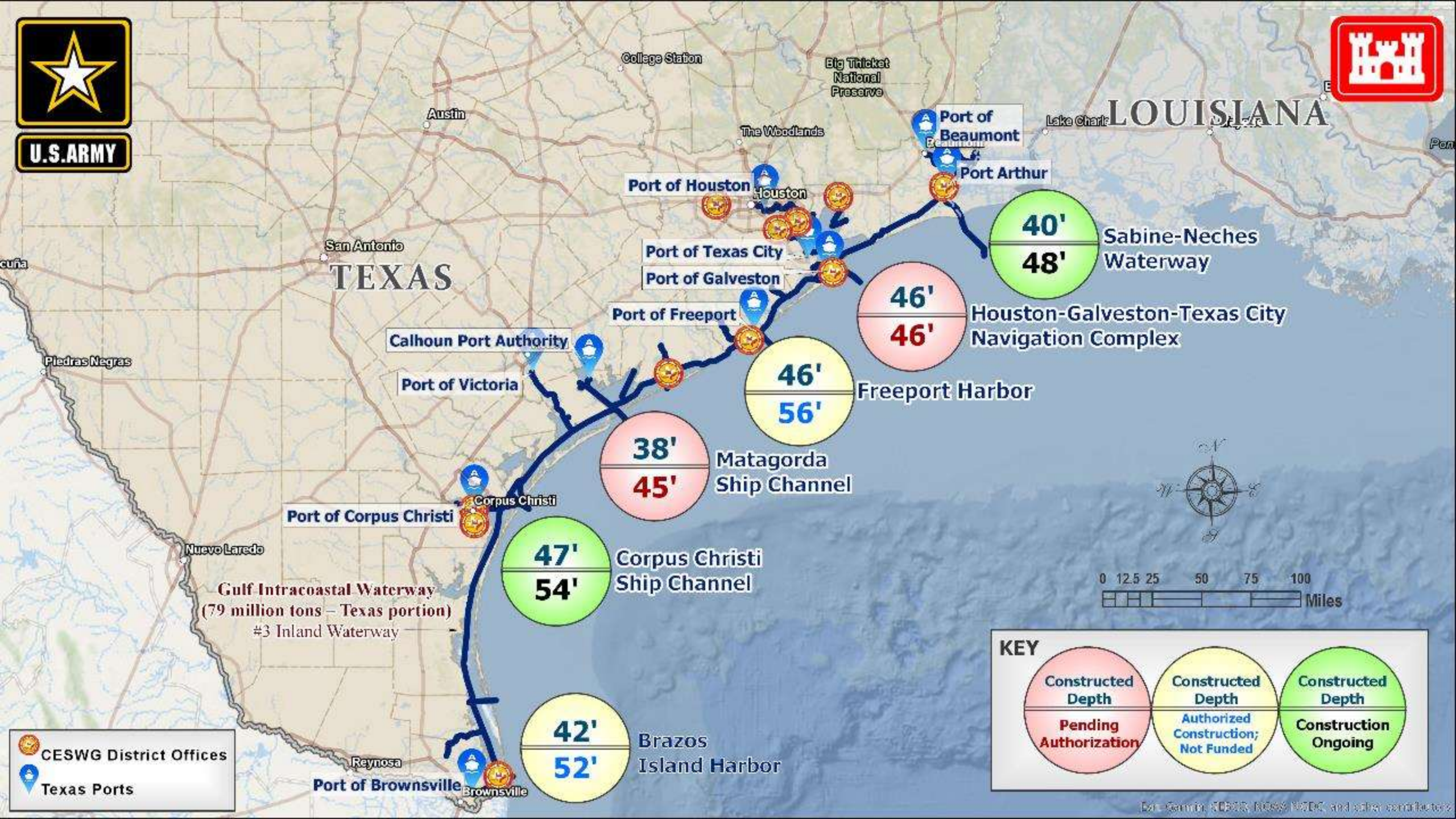
- Channel Centerline
- Navigation Channel
- Placement Areas

Source Layer Credits: Content may not reflect National Geographic's current map policy. Sources: National Geographic, Esri, Garmin, HERE, UNEP-WCMO, USGS, NASA, ESA, METI, NRCAN, GEBCO, NOAA.





U.S. ARMY



TEXAS

LOUISIANA

Gulf Intracoastal Waterway  
(79 million tons – Texas portion)  
#3 Inland Waterway

40'  
48'

Sabine-Neches  
Waterway

46'  
46'

Houston-Galveston-Texas City  
Navigation Complex

46'  
56'

Freeport Harbor

38'  
45'

Matagorda  
Ship Channel

47'  
54'

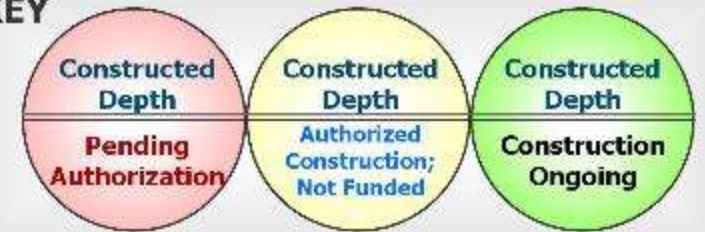
Corpus Christi  
Ship Channel

42'  
52'

Brazos  
Island Harbor



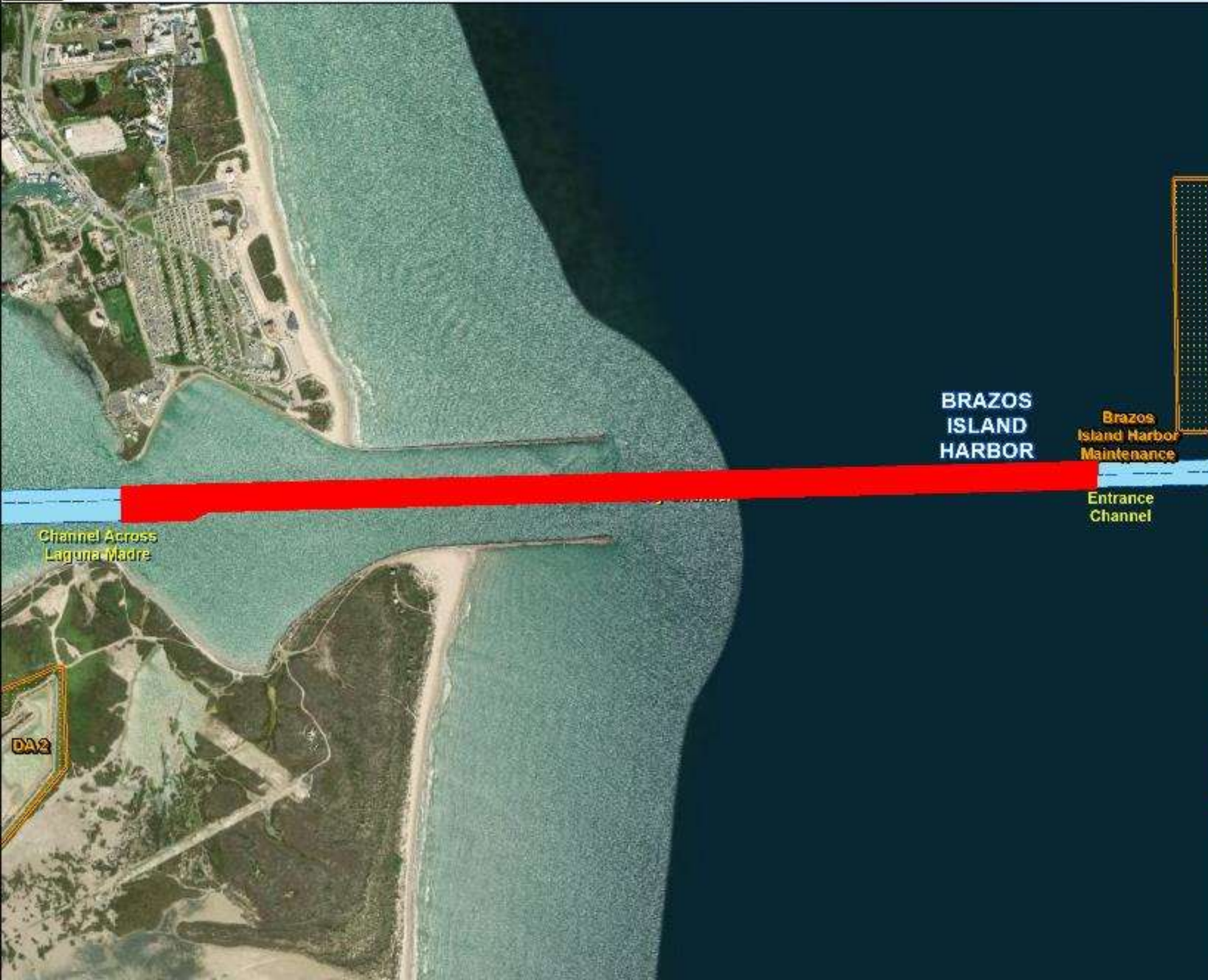
KEY



CESWG District Offices  
Texas Ports



# BRAZOS ISLAND HARBOR



LOCATION: Jetty Channel
DREDGE TYPE: H
PLACEMENT: Beach/BU
QUANTITY: 500,000 cy
DEPTH: 44 ft + 2 ft
ADVERTISE: 7/27/2020
BID OPENING: 8/26/2020
COMMENCE DREDGING: 10/14/2020
DREDGING COMPLETE: 1/28/2021
WORK RESTRICTIONS: 01 APR to 30 NOV & 15 MAR to 30 SEP



### Channel Framework

- Channel Centerline
- Navigation Channel
- Placement Areas

Service Layer Credits: Content may not reflect National Geographic's current map policy. Sources: National Geographic, Esri, Garmin, HERE, UNEP-WCMC, USGS, NASA, ESA, METI, NRCAN, GEBCO, NOAA,







Base Elevation: 102.4 Feet (31.23 Meters) (Source: National Geographic, Esri, DeLorme, HERE, OneWorld, USGS, NOAA, Esri, Merit, NGA, GEBCO, NOAA, increment P Corp.)



# MOUTH OF THE COLORADO



<b>LOCATION:</b> Jetty and Main Channels
<b>DREDGE TYPE:</b> P
<b>PLACEMENT:</b> Beach and Upland
<b>QUANTITY:</b> 500,000 cy
<b>DEPTH:</b> 17 ft.+ 1ft
<b>ADVERTISE:</b> 7/23/2019
<b>BID OPENING:</b> 12/19/2019
<b>COMMENCE DREDGING:</b> 2/14/2020
<b>DREDGING COMPLETE:</b> 9/11/2020
<b>WORK RESTRICTIONS:</b> 15 MAR to 01 SEP & 01 AUG to 01 MAY



### Channel Framework

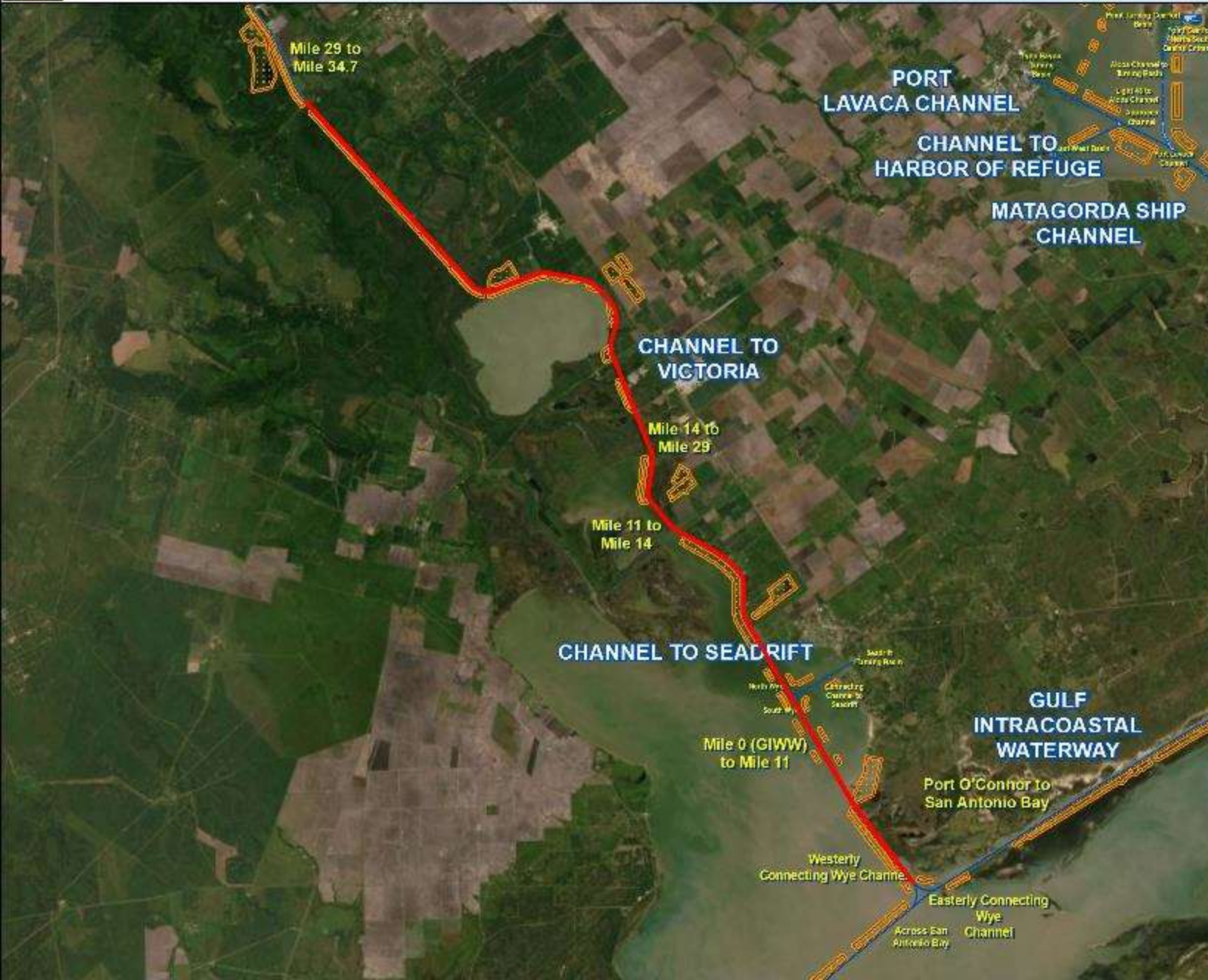
- Channel Centerline
- Navigation Channel
- Placement Areas

Service Layer Credits: Content may not reflect National Geographic's current map policy. Sources: National Geographic, Esri, Garmin, HERE, UNEP-WCMC, USGS, NASA, ESA, METI, NRCAN, GEBCO, NOAA,





# CHANNEL TO VICTORIA



<b>LOCATION:</b> Maintenance Dredging
<b>DREDGE TYPE:</b> P
<b>PLACEMENT:</b> BU & Upland Confined
<b>QUANTITY:</b> 1,300,000 cy
<b>DEPTH:</b> 16ft + 2-ft
<b>ADVERTISE:</b> 1/29/2020
<b>BID OPENING:</b> 2/28/2020
<b>COMMENCE DREDGING:</b> 5/2/2020
<b>DREDGING COMPLETE:</b> 10/28/2020
<b>WORK RESTRICTIONS:</b> 15 OCT to 15 APR



### Channel Framework

- Channel Centerline
- Navigation Channel
- Placement Areas

Source Layer Credits: Content may not reflect National Geographic's current map policy. Sources: National Geographic, Esri, Garmin, HERE, UNEP-WCMC, USGS, NASA, ESA, METI, NRCAN, GEBCO, NOAA.



# CHANNEL TO PORT MANSFIELD



<b>LOCATION:</b> Jetty and Main Channels Maintenance Dredging
<b>DREDGE TYPE:</b> P
<b>PLACEMENT:</b> Beach and Bird Island
<b>QUANTITY:</b> 2,200,000 cy
<b>DEPTH:</b> 19 ft + 2 ft
<b>ADVERTISE:</b> 8/20/2019
<b>BID OPENING:</b> 12/4/2019
<b>COMMENCE DREDGING:</b> 2/5/2020
<b>DREDGING COMPLETE:</b> 7/20/2020
<b>WORK RESTRICTIONS:</b> March - August



### Channel Framework

- Channel Centerline
- Navigation Channel
- Placement Areas

Service Layer Credits: Content may not reflect National Geographic's current map policy. Sources: National Geographic, Esri, Garmin, HERE, UNEP-WCMO, USGS, NASA, ESA, METI, NRCAN, GEBCO, NOAA,

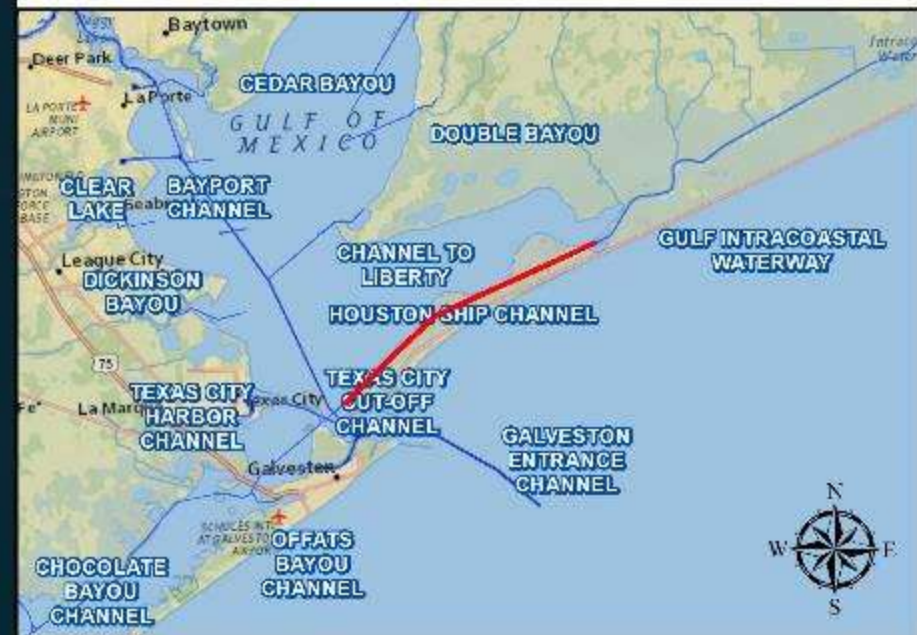




# GULF INTRACOASTAL WATERWAY

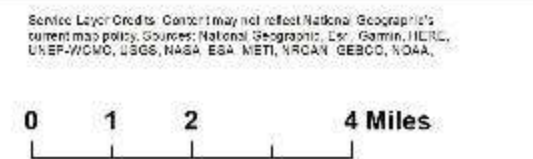


<b>LOCATION:</b> Rollover to Causeway and Bolivar Flare
<b>DREDGE TYPE:</b> P
<b>PLACEMENT:</b> BU, Upland and Open Water
<b>QUANTITY:</b> 1,000,000 cy
<b>DEPTH:</b> 17 ft + 1 ft
<b>ADVERTISE:</b> 7/17/2020
<b>BID OPENING:</b> 8/18/2020
<b>COMMENCE DREDGING:</b> 10/2/2020
<b>DREDGING COMPLETE:</b> 4/20/2021
<b>WORK RESTRICTIONS:</b> NA if observers used



### Channel Framework

- Channel Centerline
- Navigation Channel
- Placement Areas





# GULF INTRACOASTAL WATERWAY



<b>LOCATION:</b> Causeway to Bastrop
<b>DREDGE TYPE:</b> P
<b>PLACEMENT:</b> BU, Upland and Open Water
<b>QUANTITY:</b> 800,000 cy
<b>DEPTH:</b> 17 ft + 1 ft
<b>ADVERTISE:</b> 6/22/2020
<b>BID OPENING:</b> 7/22/2020
<b>COMMENCE DREDGING:</b> 9/16/2020
<b>DREDGING COMPLETE:</b> 2/21/2021
<b>WORK RESTRICTIONS:</b> 01 MAR 31 OCT



### Channel Framework

- Channel Centerline
- Navigation Channel
- Placement Areas

Service Layer Credits: Content may not reflect National Geographic's current map policy. Sources: National Geographic, Esri, Garmin, HERE, UNEP-WCMC, USGS, NASA, ESA, METI, NRCAN, GEBCO, NOAA.





# GULF INTRACOASTAL WATERWAY



LOCATION: Freeport to Upper Matagorda Bay
DREDGE TYPE: P
PLACEMENT: Upland and Open Water
QUANTITY: 1,200,000 cy
DEPTH: 17 ft. + 1ft
ADVERTISE: 5/8/2020
BID OPENING: 6/8/2020
COMMENCE DREDGING: 8/8/2020
DREDGING COMPLETE: 2/21/2021
WORK RESTRICTIONS: NA



### Channel Framework

- Channel Centerline
- Navigation Channel
- Placement Areas

Source Layer Credits: Content may not reflect National Geographic's current map policy. Sources: National Geographic, Esri, Garmin, HERE, UNEP-WCMC, USGS, NASA, ESA, METI, NRCAN, GEBCO, NOAA.





# GULF INTRACOASTAL WATERWAY



LOCATION: Matagorda Bay to Corpus Christi Bay (Across San Antonio Bay)

DREDGE TYPE: P

PLACEMENT: BU, Upland and Open Water

QUANTITY: 1,200,000 cy

DEPTH: 18 ft + 1 ft

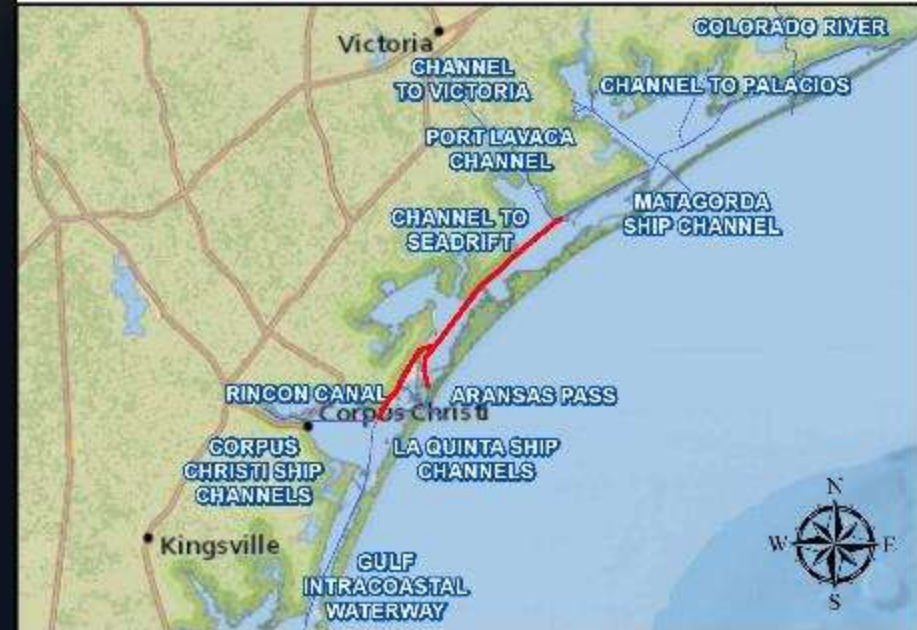
ADVERTISE: 4/20/2020

BID OPENING: 5/20/2020

COMMENCE DREDGING: 5/8/2020

DREDGING COMPLETE: 10/14/2021

WORK RESTRICTIONS: 15 APR - 14 OCT



### Channel Framework

- Channel Centerline
- Navigation Channel
- Placement Areas

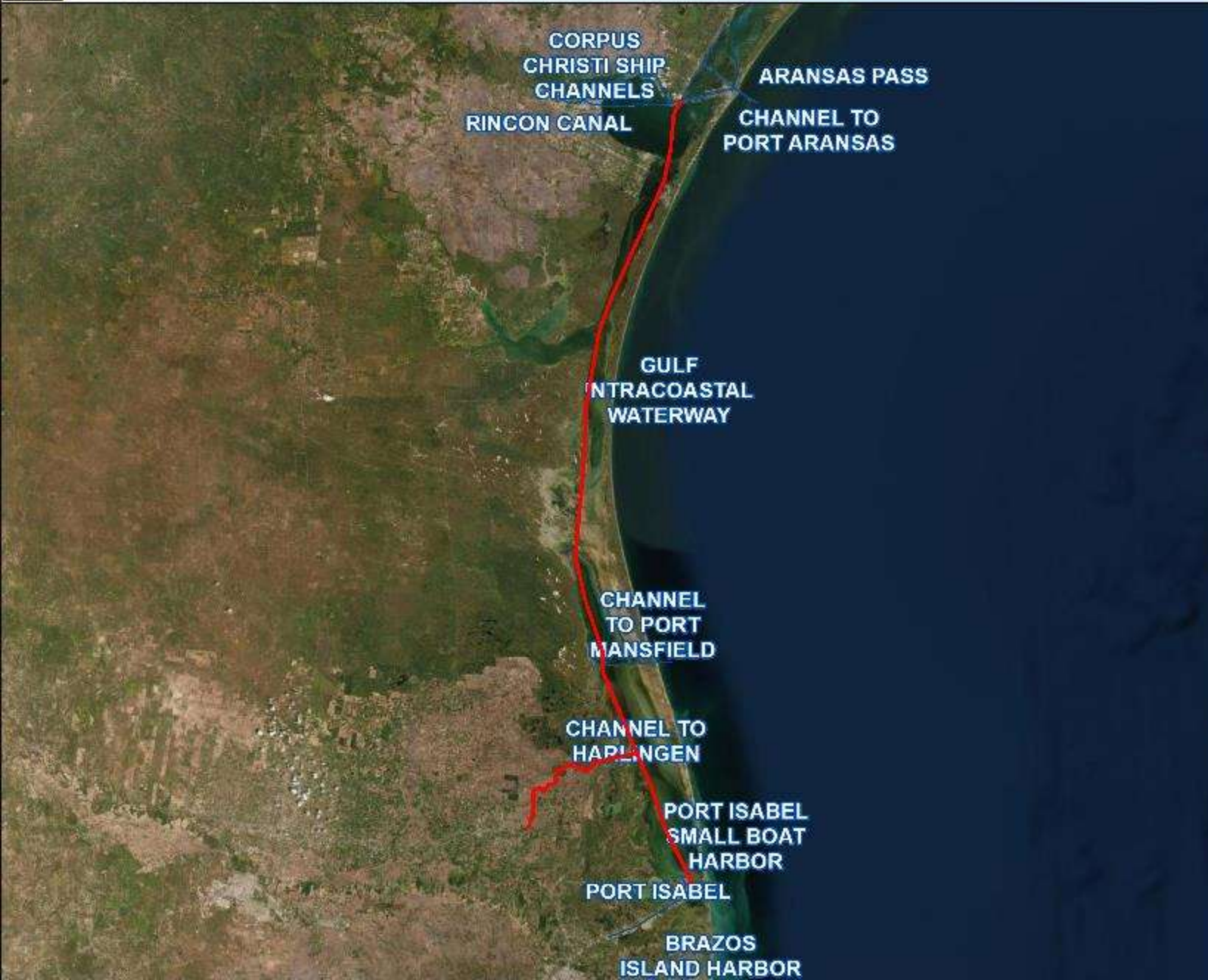
Source Layer Credits: Content may not reflect National Geographic's current map policy. Sources: National Geographic, Esri, Garmin, HERE, UNEP-WCMC, USGS, NASA, ESA, METI, NRCAN, GEBCO, NOAA.







# GULF INTRACOASTAL WATERWAY



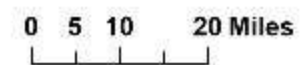
LOCATION: Corpus Christi to Port Isabel / Channel to Harlingen
DREDGE TYPE: P
PLACEMENT: Upland and Open Water
QUANTITY: 1,200,000 cy
DEPTH: 14 ft + 1 ft
ADVERTISE: 7/21/2020
BID OPENING: 8/20/2020
COMMENCE DREDGING: 10/16/2020
DREDGING COMPLETE: 7/21/2021
WORK RESTRICTIONS: 01 MAR 31 OCT



### Channel Framework

- Channel Centerline
- Navigation Channel
- Placement Areas

Service Layer Credits: Content may not reflect National Geographic's current map policy. Sources: National Geographic, Esri, Garmin, HERE, UNEP-WCMC, USGS, NASA, ESA, METI, NRCAN, GEBCO, NOAA.





CONNECT WITH US!



ON FACEBOOK

[www.facebook.com/GalvestonDistrict](http://www.facebook.com/GalvestonDistrict)



ON TWITTER

[www.twitter.com/USACEgalveston](http://www.twitter.com/USACEgalveston)



ON YOUTUBE

[www.YouTube.com/Galveston District](http://www.YouTube.com/GalvestonDistrict)



ON DVIDS

[www.dvidshub.net/units/USACE-GD](http://www.dvidshub.net/units/USACE-GD)



ONLINE

[www.swg.usace.army.mil](http://www.swg.usace.army.mil)

