

# **FREEPORT LNG**

## **Dock 2 Basin**

### **Dredging & Construction**

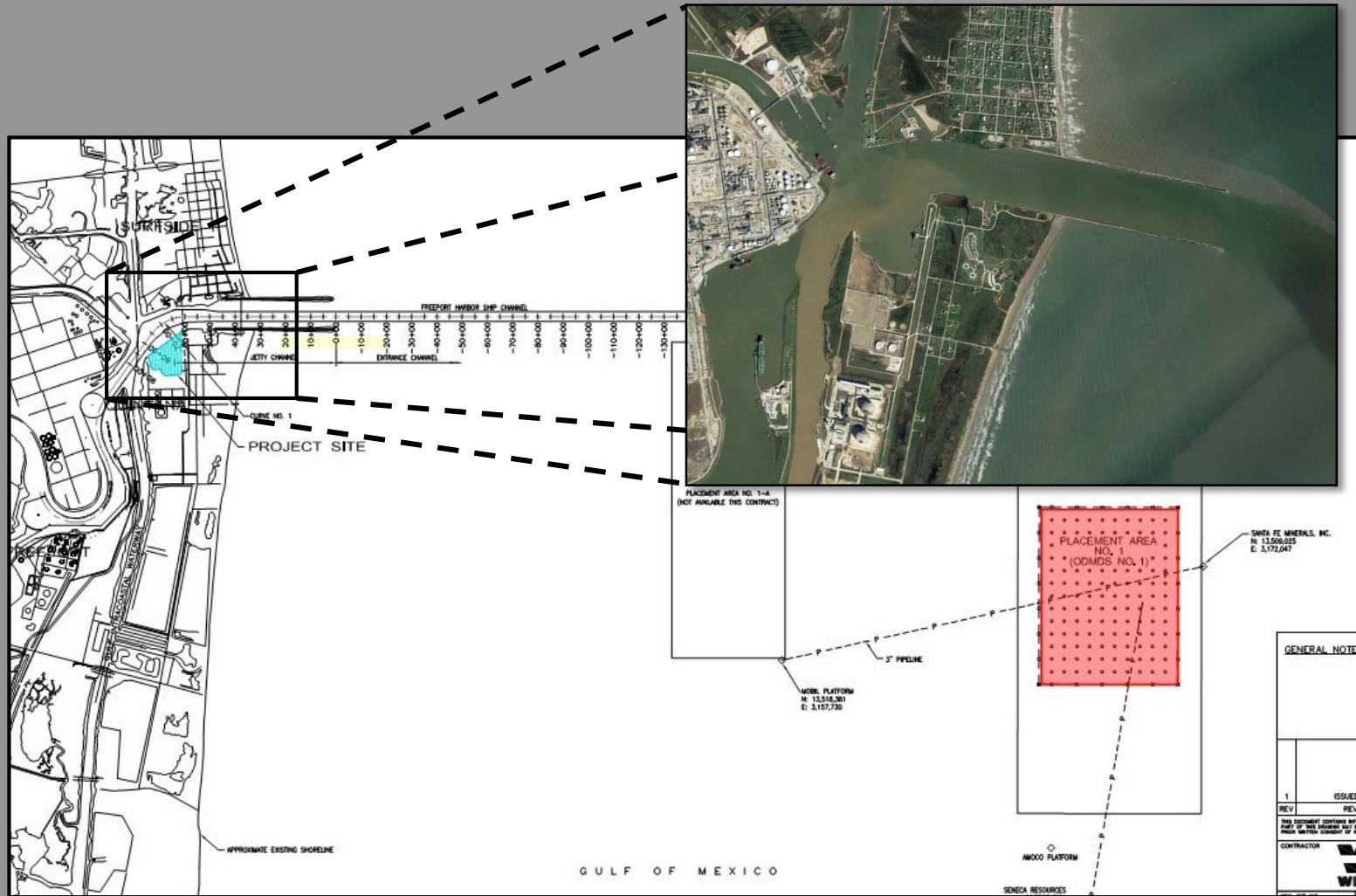


Courtesy Photo: Image #160411 6023 © Aero Photo 04.11.16

**Chuck Broussard**

**Nov 2016**

# PROJECT OVERVIEW



# PROJECT DETAILS



- Dredging Freeport LNG Dock 2 Basin into placement area ODMS No.1
- Combination 30" Cutterhead Dredge and Scows
- Placement area approximately 35,000 ft. from borrow area
- Depth of -46.5 ft. NAVD88 plus 2 ft. over-dredge allowance
- Dredging approximately 1,230,000 CY

# CAPT FRANK



# BARGE LOADING



Spider Barge  
165 ft. in length

Courtesy Photo: Image #160411 6023 © Aero Photo 04.11.16

# SCOW TRANSPORT



# CONSTRUCTION EQUIPMENT



WEEKS 532 • 545 • 553



# WEEKS 532



64 • 54" Ø PILES  
3 • 96" Ø PILES





# SHORELINE PROTECTION



# CHALLENGES



- Coordination between dock construction and dredging operations
- Slope excavation for Shoreline Protection
- Dredging operations conducted simultaneously with another maintenance dredging project working in the LNG Area



*QUESTIONS?*