

Ocean Disposal Partnership – USACE and USEPA R6

Successes and Improved Processes

By: Jeff Corbino, USACE New Orleans District
Lisa Finn, USACE Galveston District
Dr. Jessica Franks, EPA R6



BUILDING STRONG®

USACE Galveston

▪ New Initiatives

- Federal Register updates
- SMMP revisions
 - Galveston Bay Complex
- 3rd party ODMDS use



Ocean Disposal Partnership USACE and USEPA R6



BUILDING STRONG®

Ocean Disposal Partnership USACE and USEPA R6

USACE Galveston

▪ **New Initiatives** – Federal Register update

- Effective October 15, 2015
- The previous wording within the 40 CFR 228.15 restricted the use of the ODMDS to only dredged material originating from specific federal channel reaches.
- Changed to include suitable dredged material from the **greater vicinities** of the respective federal channels.
- Provides flexibility for disposal facility management and 3rd party use



BUILDING STRONG®

USACE Galveston

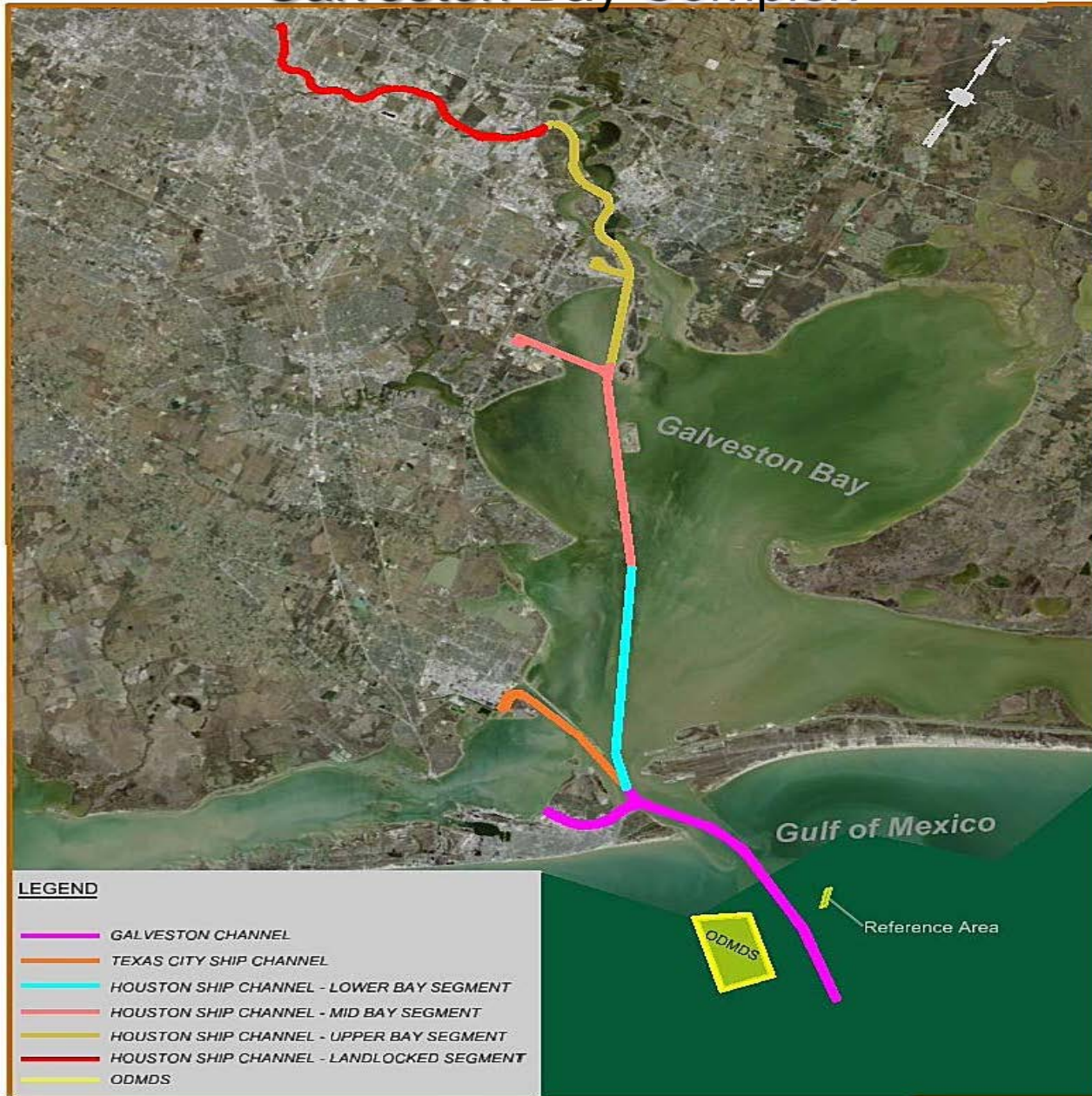
▪ **New Initiatives** – Galveston ODMDS Site Management & Monitoring Plan (SMMP) Revision

- ▶ Jointly Developed by EPA and USACE
- ▶ Expands use of existing Galveston ODMDS to include dredged material from the Galveston Bay Complex
- ▶ Cost saving measure
 - Reduce costs for bathymetry
 - Separate disposal zones
- ▶ Specifies monitoring & management requirements
- ▶ Includes commitment to provide DQM and bathymetry data
- ▶ Post disposal summary report
- ▶ First time federal use in FY17 project

Mid Bay Segment



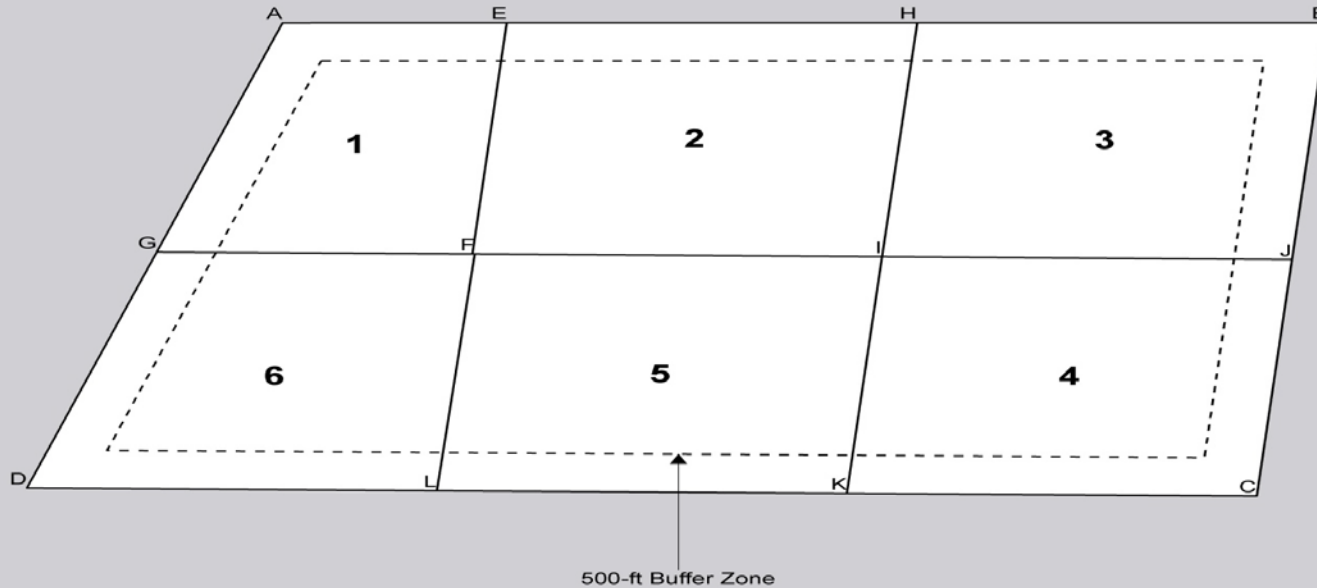
Galveston Bay Complex



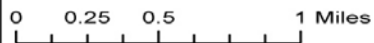
BUILDING STRONG®

Galveston Bay Complex

Point	Latitude	Longitude
A	29° 18' 00.85" N	94° 39' 30.69" W
B	29° 15' 54.86" N	94° 37' 06.69" W
C	29° 14' 24.86" N	94° 38' 42.69" W
D	29° 16' 54.86" N	94° 41' 30.69" W
E	29° 17' 33.81" N	94° 38' 59.79" W
F	29° 16' 49.55" N	94° 39' 46.36" W
G	29° 17' 28.34" N	94° 40' 29.80" W
H	29° 16' 44.33" N	94° 38' 03.24" W
I	29° 15' 59.85" N	94° 38' 50.69" W
J	29° 15' 09.81" N	94° 37' 54.75" W
K	29° 15' 14.85" N	94° 39' 38.69" W
L	29° 16' 04.85" N	94° 40' 34.68" W



Galveston ODMDS Disposal Zones



Basemap: World Light Grey Canvas (ESRI, NAVTEQ)
Produced by: EPA Region 6, Dallas, TX



BUILDING STRONG®

USACE Galveston

- **New Initiatives - ODMDS 3rd party use**
 - Entrance Channel non-federal new work already permitted
 - ▷ Freeport Entrance Channel - completed
 - ▷ Matagorda Ship Channel – previously permitted
 - Not undertaken
 - Non-channel new work
 - ▷ Freeport LNG Dock II Expansion – completed
 - Future project considerations/logistics
 - ▷ Testing
 - ▷ Cost / distance to ODMDS
 - ▷ Time



USEPA Region 6

Proposed Cost Savings Under Consideration

- ▶ Removal of pre and post sediment monitoring for physical, chemical and biological analyses at New Work ODMDS
 - \$500,000+ cost savings/project to USACE & Permittees

- ▶ Policy on How to Report and Use Non-Detect Chemical Data
 - Provides conservative approach for evaluating chemical data when the required target detection limits are not met

- ▶ Reduce chemicals of concern to only compounds needed for decision making
 - Reduces time and costs for USACE/Permittee for analytical interpretation and report writing
 - Reduces EPA review time



Ocean Disposal Partnership USACE and USEPA R6

USACE New Orleans

(1) Decipher Rules & Regs

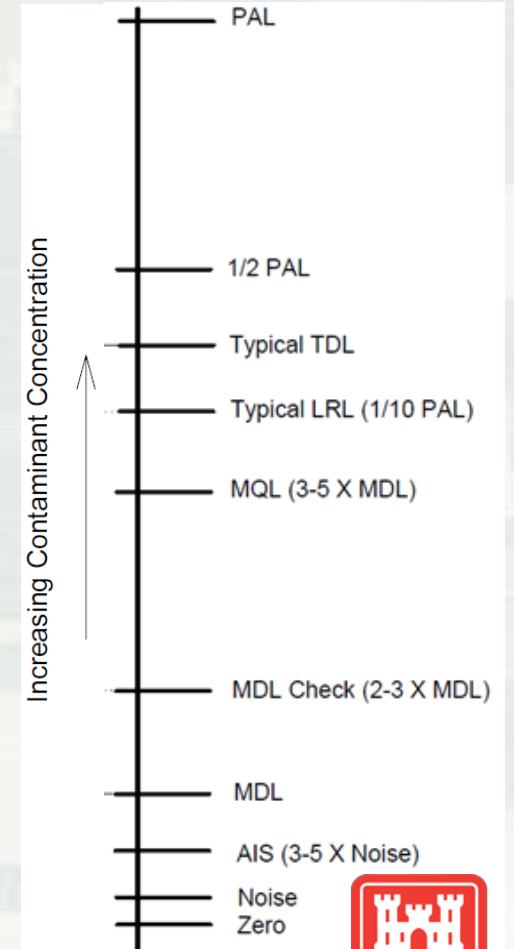
(2) Standardize Submittals

(3) Address Reoccurring Problems

Collage of regulatory documents including EPA and USACE reports, CFR sections, and a table of contents.

Aerial view of a dredging site with a data table and a map of the disposal route.

Na:	Dis	Program
Loa	Dis	Program
Co	Dis	Program
Pro	Dis	Program
Load	Dis	Program
Plant	Dis	Program
Plant name:	Wheeler	
Δ Displacement (LT):	4861.1	
Δ Volume (CY):	1668.7	
State Place:	Louisiana 1702, Southern Zone	
Disposal Start		
Start Time:	8/30/2016 1:48 PM (UTC -5)	
Latitude/Longitude:	-89.345457 / 29.275807	
Easting/Northing:	3914885.91 / 287677.52	
Fore/Aft Draft (ft.):	25.3 / 25.7	
Fore/Aft Bin (ft.):	5.4 / 4.3	
Displacement (LT):	16089.0	
Volume (CY):	8427.80	
Disposal End		
End Time:	9/1/2016 11:57 PM (UTC -5)	
Latitude/Longitude:	-89.253025 / 29.1	
Easting/Northing:	3944827.80 / 245	
Fore/Aft Draft (ft.):	16.3 / 20.9	
Fore/Aft Bin (ft.):	12.4 / 12.3	
Displacement (LT):	11226.9	
Volume (CY):	6759.10	



BUILDING STRONG®