

# Shallow water dredging monitoring with NORdredge

This is not a sales presentation  
This is a technology awareness  
presentation

Gulf Chapter WEDA Fall 2021





**NORBIT**  
*- explore more -*

NORBIT STX, iSTX and STX360

4D solution for dredging applications

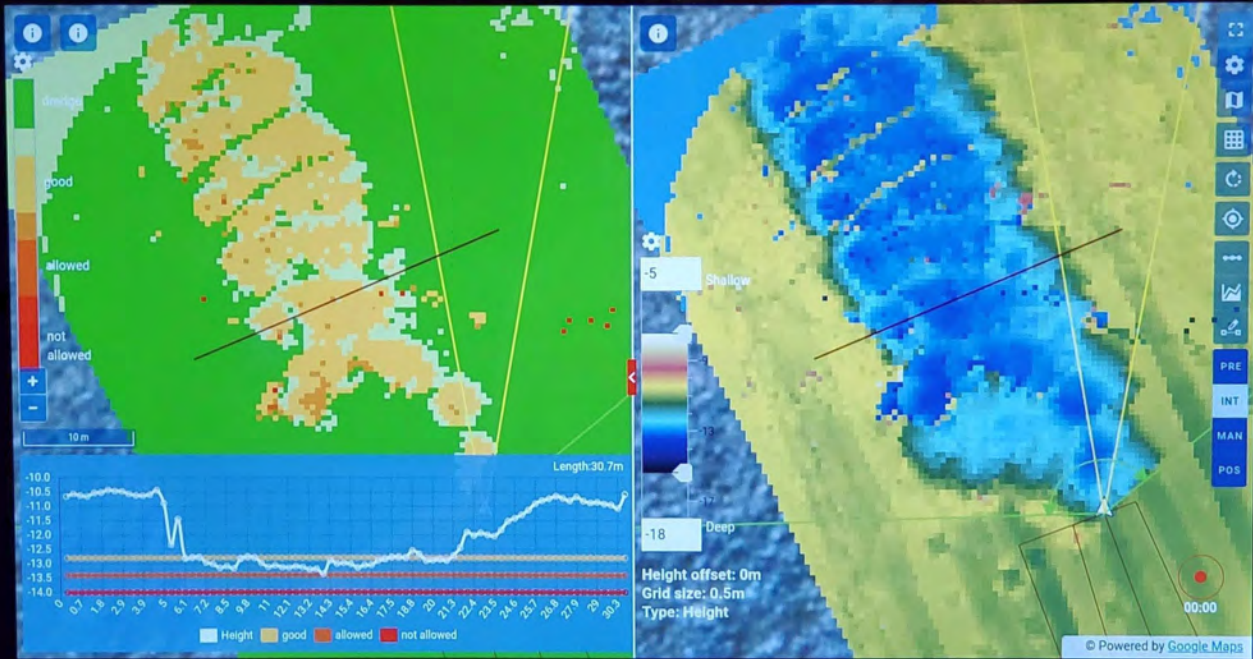


pawel@norbit.com

WEDA 10.2019







**NORBIT**  
www.norbit.com





















10:42

192.168.54.123 x NOREBT - NORdredge Web Au x

192.168.53.150.40900

Drudge volume:	
To be dredged	4.026 m <sup>3</sup>
Allowed overdrudge	0.000 m <sup>3</sup>
Hard overdrudge	0.000 m <sup>3</sup>

if bypass point	
gludge	-36.13713'
bed	26.888647'
height 3/17M 110	127.714444 ft
height 3/17M 110	114.424328 ft
Height	-13.249 ft
Difference	-3.89 ft

Vector data	
Longitude	76.822222
Latitude	39.888889
Casting System	110
Heading 3/17M 110	110.424328 ft
Heading	127.714444 ft
Color	0.000
Speed	0.000
Pressure	0.000
Pitch	0.000
Roll	0.000
Roll rate	0.000
Timestamp	2021-05-21 14:00:00

not allowed allowed

good

Height offset: 124.7781  
Grid size: 4.444 ft  
Type: Height





# NORBIT

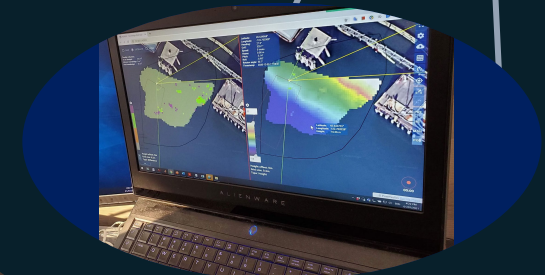
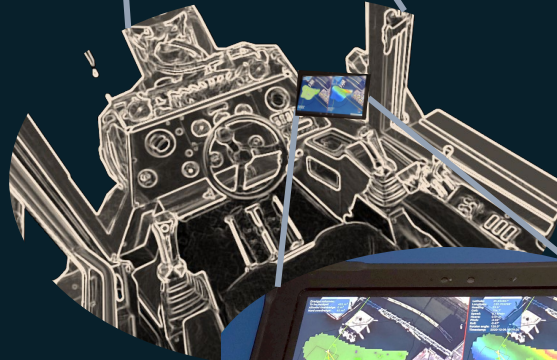
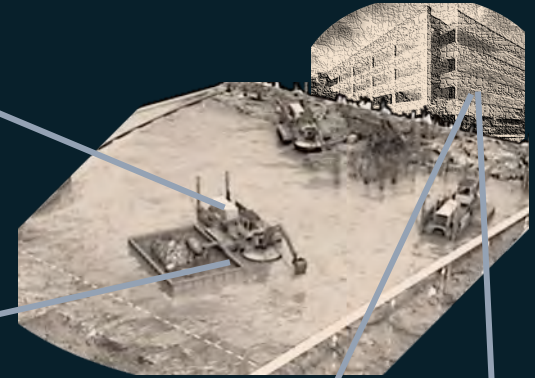
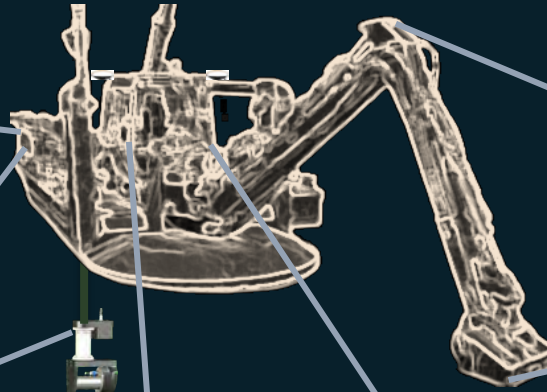
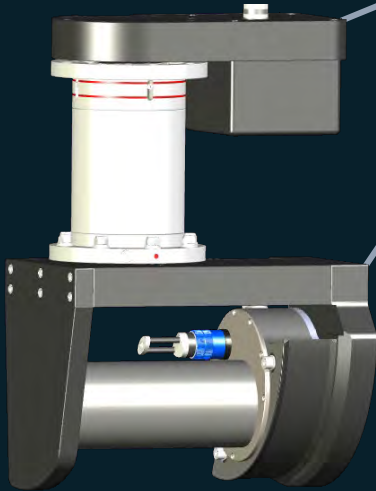
- explore more -

# NORdredge

Processor

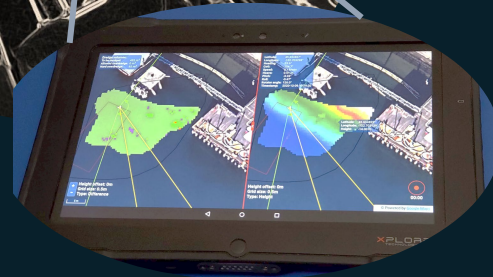


iSTX36  
0



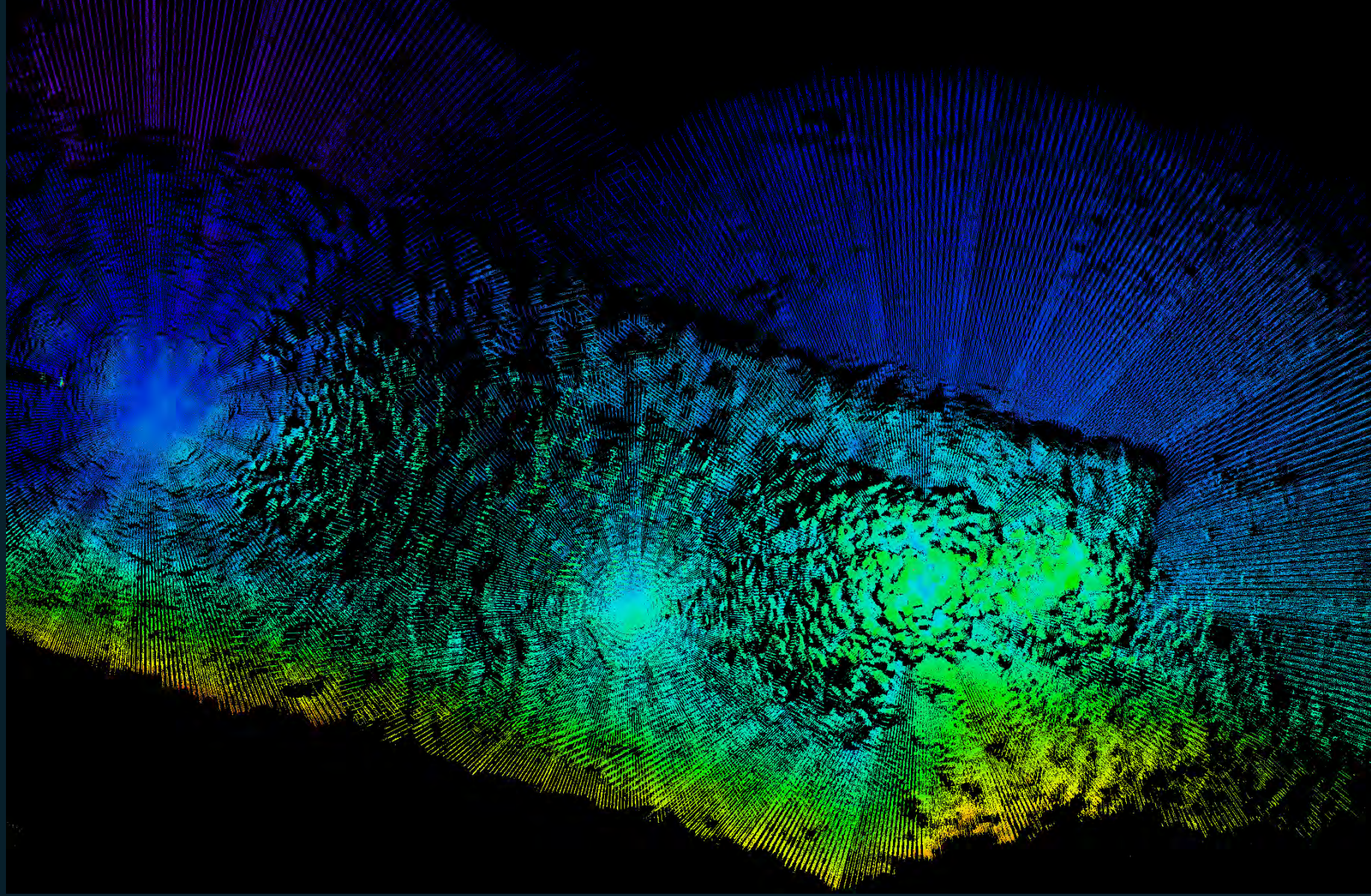
PC at the  
Office

Tablet



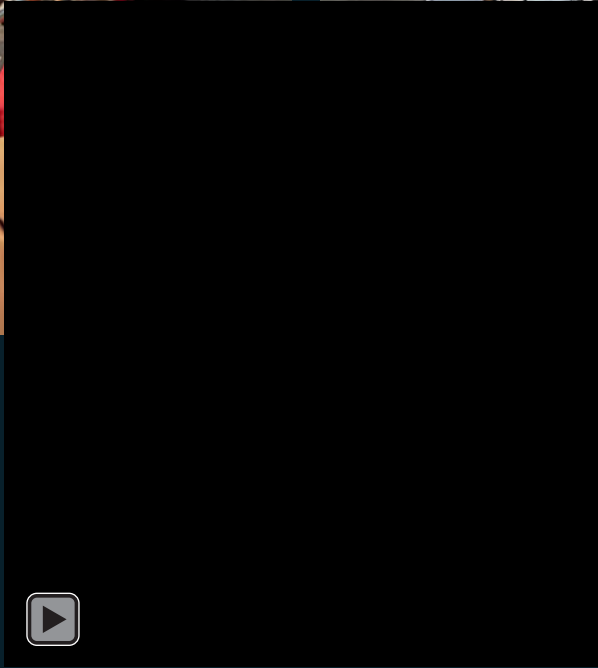
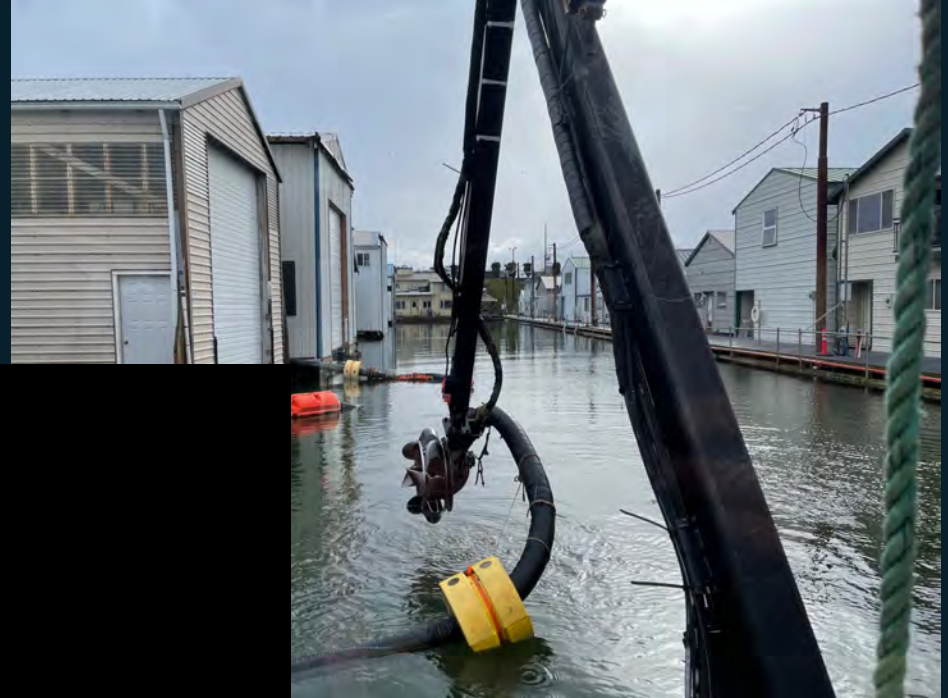








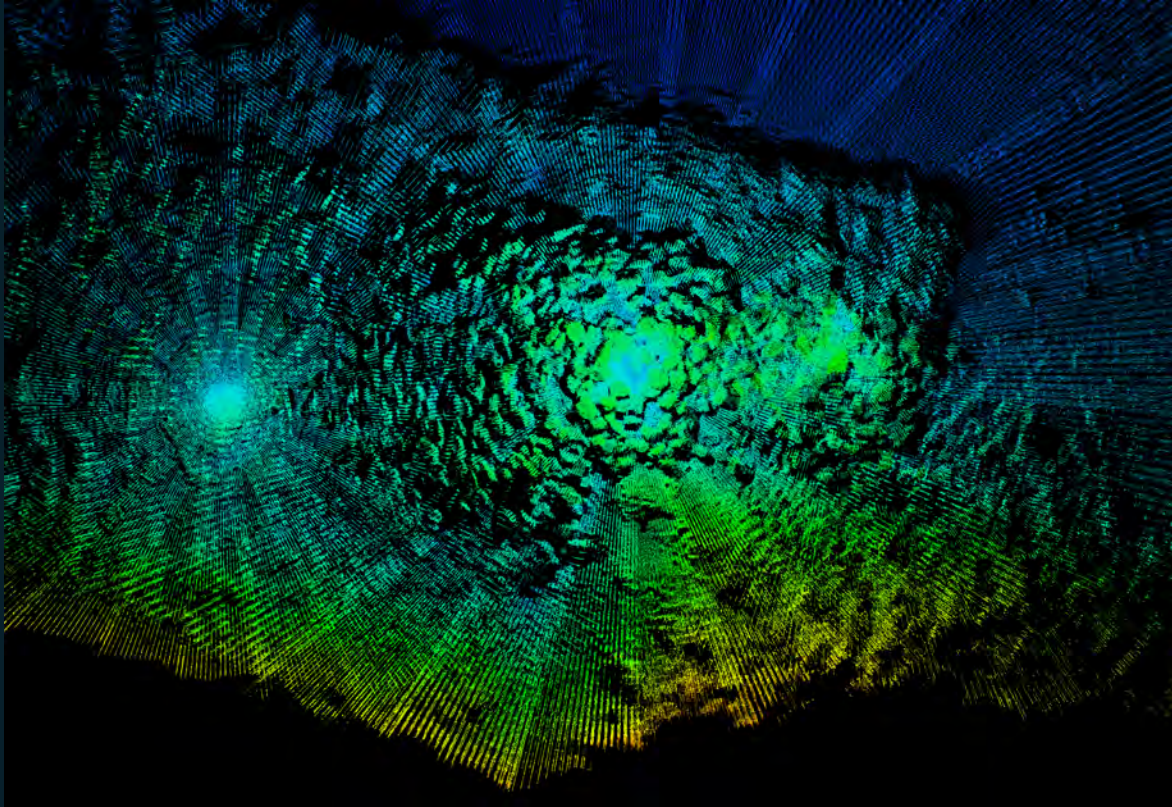
And the last little ting...



**NORBIT**  
*- explore more -*

Thank you!

NORdredge - 4D solution for dredging applications



[subsea@norbit.com](mailto:subsea@norbit.com),

[josh.mode@norbit.com](mailto:josh.mode@norbit.com)