

# Dredging Quality Management



Jesse Hall

WEDA Gulf Coast Chapter  
Annual Conference

November 14, 2019



US Army Corps  
of Engineers®

# Presentation Outline

- DQM Overview
- Past Year's Achievements
- Current/Future Developments



US Army Corps  
of Engineers®



# What is DQM?

- Grew out of ERDC Silent Inspector Program – 2006
- Initially implemented on Hoppers & Scows, expanding to Pipeline Dredges (Cutterhead & Dustpan)
- Uses dredge sensor data to remotely monitor dredging activities (Location, Dredge State, Progress, Spec Compliance)
- Tracks historical usage/trends for planning future contracts and monitoring plant utilization nationwide.

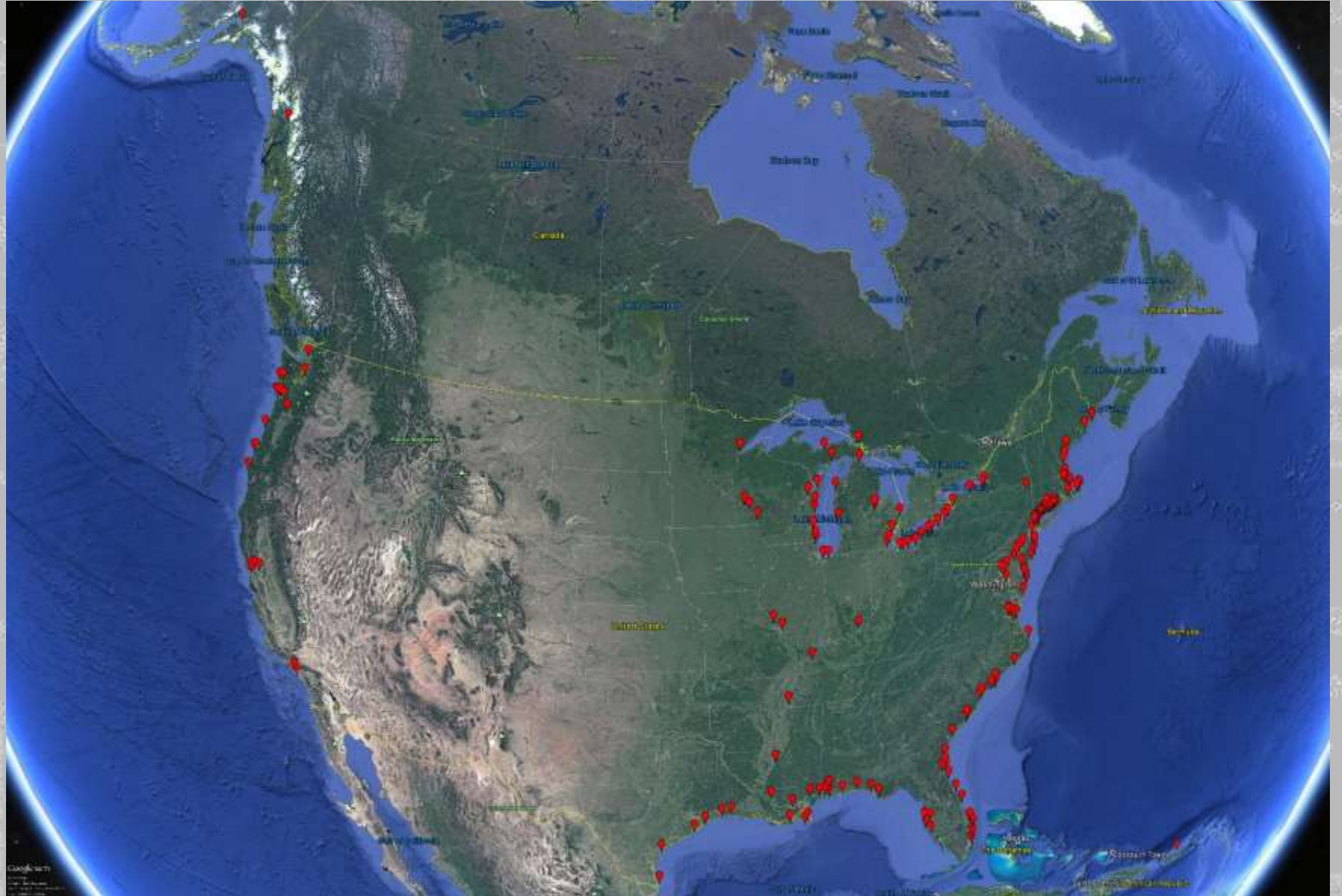


US Army Corps  
of Engineers®

# A Nationwide Program

Received data from:  
20 Hopper Dredges  
231 Scows  
23 Pipeline Dredges  
+ 5 Pipelines prepped

>1000 Contracts/Permits  
29 USACE Districts



US Army Corps  
of Engineers ®



# A Nationwide Program

As of 11/08/2019

Active Dredges:

12 Hopper Dredges\*

19 Pipeline Dredges

68 Scows

47 Active Contracts/Permits

19 USACE Districts



US Army Corps  
of Engineers®



# Hopper Dredge Instrumentation

Vessel Position  
Vessel Heading  
Vessel Course  
Vessel Draft  
Hopper Ullage  
Draghead Depth  
Hull Status  
Slurry Velocity  
Slurry Density  
Pump RPM



US Army Corps  
of Engineers®



# Scow Instrumentation

- Position
- Heading
- Course
- Draft
- Ullage
- Hull Status

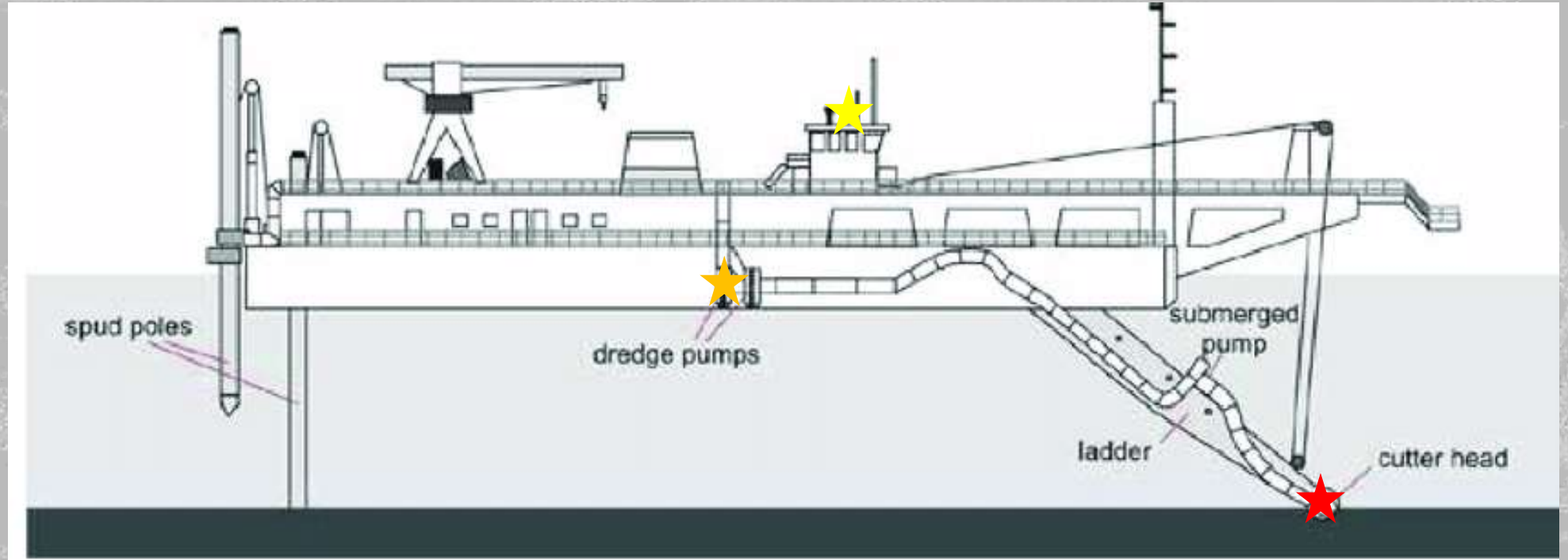


US Army Corps  
of Engineers®



# Pipeline Dredge Instrumentation

Vessel Position  
Vessel Heading  
Suctionhead Depth  
Slurry Velocity  
Slurry Density  
Pump RPM  
Vacuum Pressure  
Outlet Pressure  
Discharge Location



US Army Corps  
of Engineers®



# Pipeline Dredge State Data

- Contract Start/End
- Tide/River Stage Data Source
- Pipeline Lengths
- Booster Pump Usage
- Dredge Advance
- Outfall Information (if not instrumented)
- Non-Effective Events



US Army Corps  
of Engineers®



# DQM Data Pyramid

**Program Management (Headquarters)**  
Dredging Trends & Plant Utilization Forecasting  
Informed Policy Decisions

**Planning**  
Contract/Project Area/Annual Summaries  
Use Historical Data for Gov't Estimates  
Estimating Future Costs and Dredging Requirements

**Administration (Local Districts, EPA, BOEM)**  
Monitoring Daily Operations & Progress  
Load/Daily Data Summaries  
Ensure Specification & Environmental Compliance

**Data Acquisition & Quality Assurance (DQM Center – Mobile)**  
Raw Data Acquisition  
Data Quality Assurance (Database and Field QA)  
Point-by-Point Data Analysis for State Determination



US Army Corps  
of Engineers®



# Past Year's Achievements

- New DQM Viewer 3.0
- Rollout of DQM on Pipeline Dredges
- DQM Scow System Provider Meeting
- Specification Revisions
- DQM Team Personnel Changes



US Army Corps  
of Engineers®



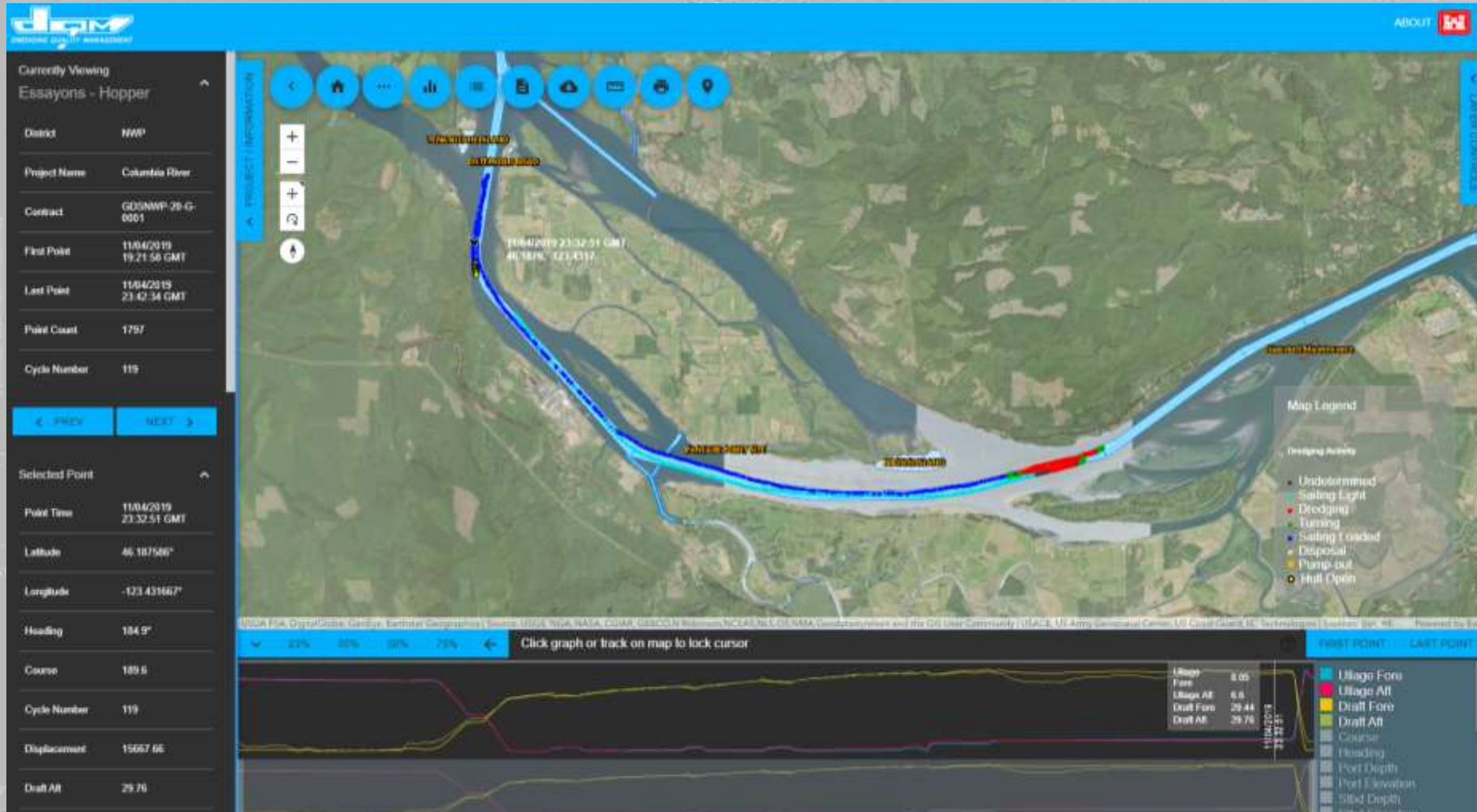
# New DQM Viewer (Version 3.0)

- Old viewer phased out due to deprecated architecture (MS Silverlight)
- Replaced with newer and more robust JavaScript libraries
- Visualize Hopper, Scow & Pipeline dredge data
- Export Data in other formats (PDF reports, CSV files)
- Works best in Google Chrome
- Ongoing Development of New Features and Improvements



US Army Corps  
of Engineers®

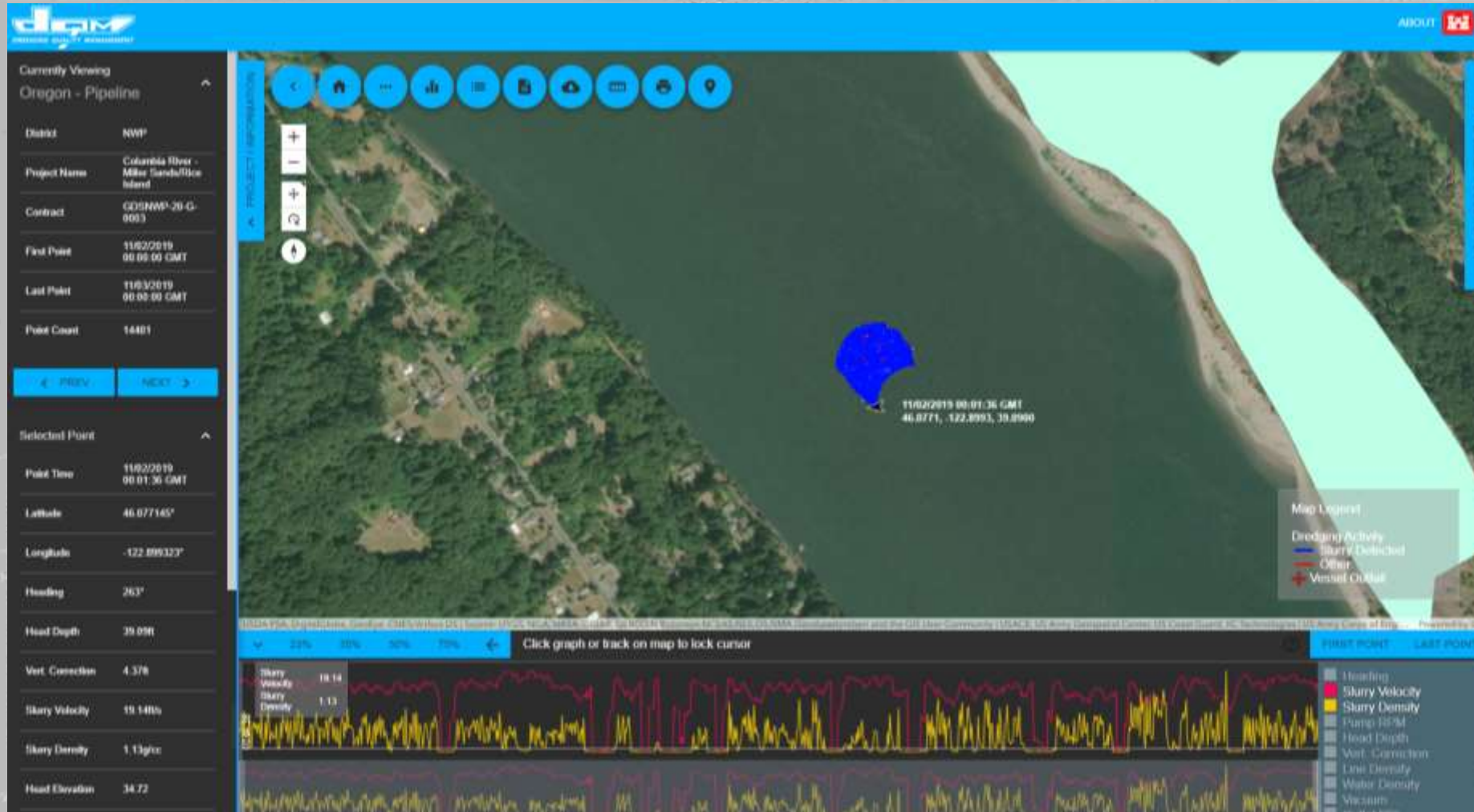
# New DQM Viewer (Version 3.0)



US Army Corps  
of Engineers®

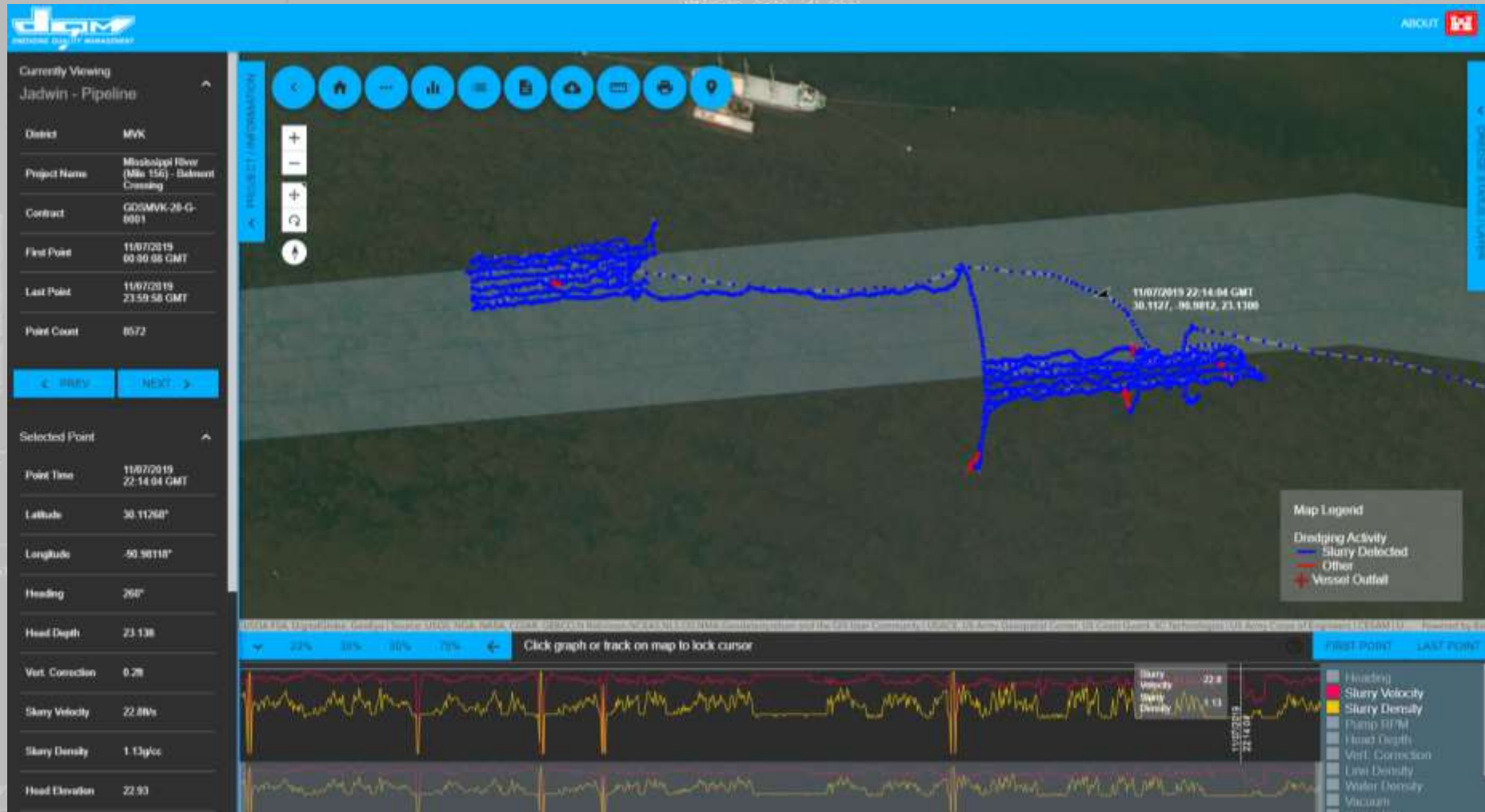


# New DQM Viewer (Version 3.0)



US Army Corps  
of Engineers®

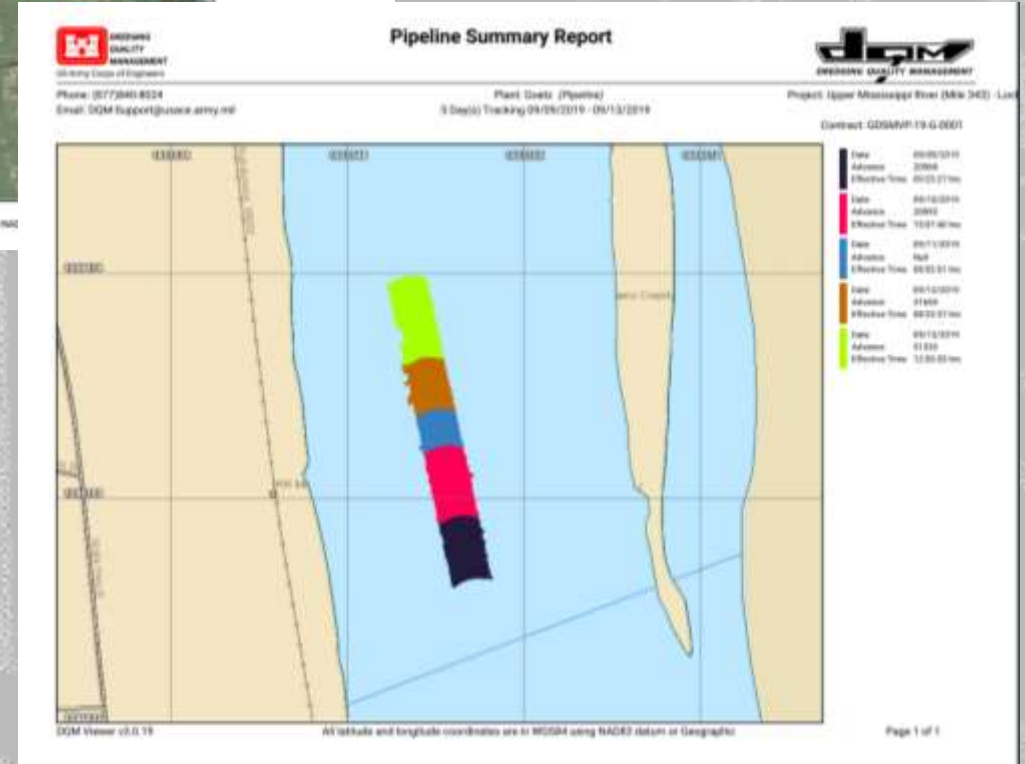
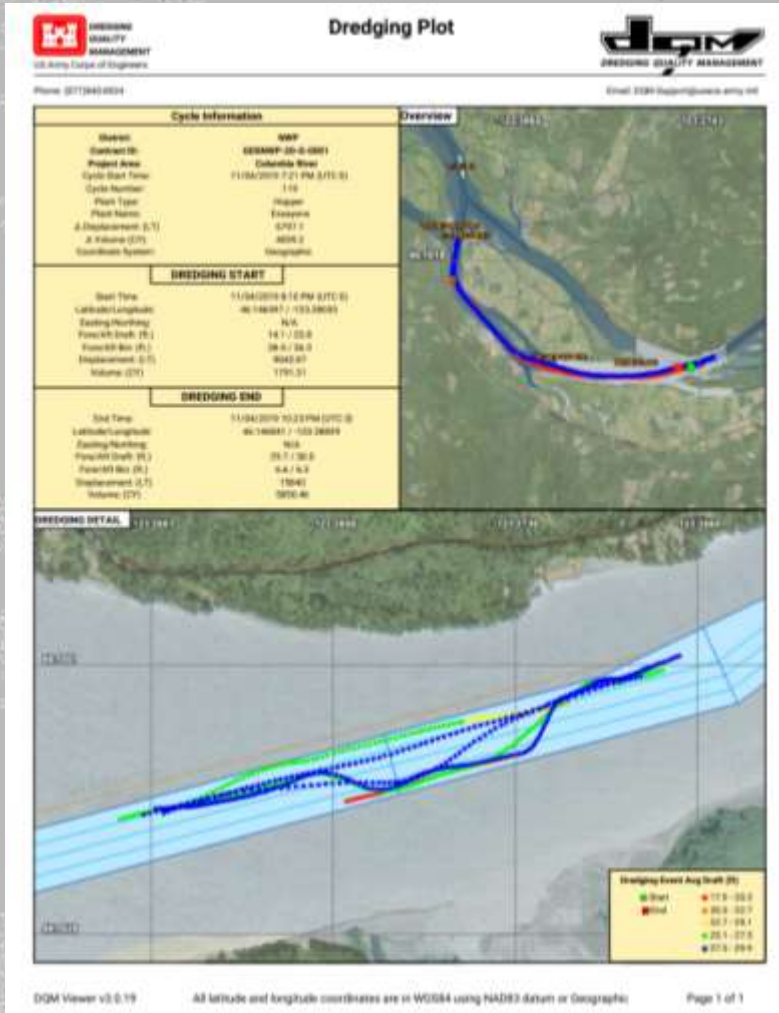
# New DQM Viewer (Version 3.0)



US Army Corps  
of Engineers®



# New DQM Viewer (Version 3.0)



t

- All Government dredges have been updated to meet current specs.

- Rollout has been variable by district thus far. Mandate is coming from USACE Headquarters on Tuesday, November 12, 2019.

4. GUIDANCE: The use of DQM on all future unrestricted pipeline dredging contracts is to be implemented immediately. DQM monitoring is a requirement on unrestricted (Full and Open Competition) pipeline dredging contracts only. Any pipeline dredging contracts classified as unrestricted are exempt from DQM. All unrestricted pipeline dredging contracts must meet the pipeline dredge monitoring specifications and requirements when bidding on unrestricted contracts. These specifications are located on the DQM Center website at <http://dqm.usace.army.mil/Specifications/Pipeline.aspx>.

- Required on 'unrestricted' contracts, independent of dredge size.
  - If a small business, 8a, etc, bids on an unrestrictive contract, then they must meet the DQM specs.

- Language for Regulatory Permits is still pending, but DQM requirements will be based upon multiple variables (\$\$\$, Total Volume, Is dredge already outfitted?, etc).



US Army Corps of Engineers®



# Specification Revisions

- Elimination of the Tracking Profile for scows.
- Clarification of ambiguous statements and correction of reported errors.
- Latest Versions are available on the DQM Website
  - <https://dqm.usace.army.mil/Specifications/Index.aspx>



US Army Corps  
of Engineers®

# Current/Future Developments

- Migration to the Cloud
- Pipeline Dredge State Data Entry Tool
- Dredge State Determination Logic Improvements
- Automated Data QA Procedures
- Improved & Automated Data Analysis and Reporting
- Updated DQM Mandate from USACE Headquarters
- Integration with other USACE Databases (RMS, DIS)
- DQM Road Show



US Army Corps  
of Engineers®



# Questions?



**US Army Corps  
of Engineers**®