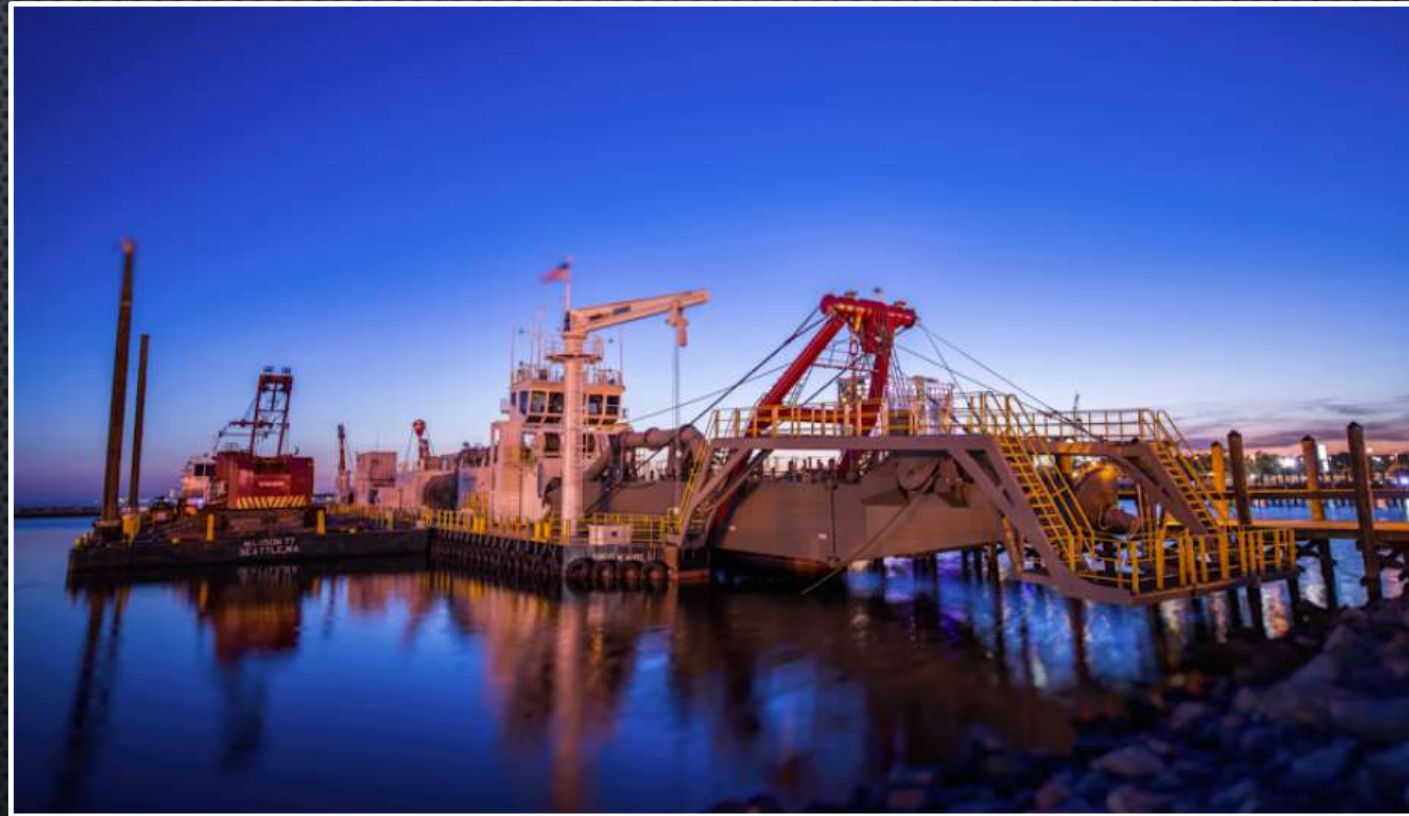


CUTTER SUCTION DREDGE ROBERT M. WHITE



DREDGE BUILD SUMMARY



- CONSTRUCTION PERIOD: NOVEMBER 2015 - JUNE 2017
- SPECS:
 - 30" CUTTER SUCTION DREDGE
 - BUILT BY HALIMAR SHIPYARD IN MORGAN CITY, LOUISIANA
 - DESIGNED BY IHC AMERICA INC.
 - MAJOR COMPONENTS SUPPLIED BY IHC AMERICA INC.
(SPUD CARRIAGE, DREDGE PUMPS, LADDER, CUTTER)
 - (1) 30" SUBMERGED LADDER PUMP AND (2) 30" DECK PUMPS
 - DREDGE SIZE (INCLUDING IDLER BARGE): ~420'x50'



PHASE 1- CONSTRUCTION OF BARGE AND INTERNAL SYSTEMS



- OCTOBER 2015 – FEBRUARY 2016: CONTRACT NEGOTIATIONS (SHIPYARDS AND IHC)
- NOVEMBER 2015 – JANUARY 2017: CONSTRUCTION OF BARGE
- OCTOBER 2016 – FEBRUARY 2017: INTERNAL SYSTEMS, PIPING, AND ELECTRICAL



PHASE 2- MAJOR COMPONENTS



- BUILT IN HOLLAND. STARTED JUNE 2016
 - SPUD CARRIAGES
 - DREDGE PUMPS (AND ENGINES)
 - LADDER
 - CUTTER
 - PIVOTING GEAR BOX
- FINISHED JANUARY 2017



MAJOR COMPONENTS – SHIPPED FROM PORT OF ROTTERDAM IN FEBRUARY 2017



MAJOR COMPONENTS – ARRIVED AT PORT OF NOLA IN MARCH 2017



PHASE 3 – ASSEMBLY AND OUTFITTING MORGAN CITY, LA- MARCH 2017



PHASE 3 – ASSEMBLY AND OUTFITTING MORGAN CITY, LA- MARCH 2017



PHASE 3 – ASSEMBLY AND OUTFITTING MORGAN CITY, LA- MARCH 2017



ROBERT M. WHITE IN ACTION



CHALLENGES / LESSONS LEARNED



- FLOW OF DESIGN DRAWINGS BETWEEN IHC, ABS, MANSON, AND HALIMAR
- DOCUMENT TRACKING AND ORGANIZATION
- DEVELOP EFFICIENT PROCESSES AND TRACKING FOR CONTRACT CHANGE ORDERS. OVER 120 CHANGE ORDERS ON THE PROJECT.
- AS EARLY AS POSSIBLE, DETERMINE: DETAILED DREDGING OPERATING PARAMETERS, SPARES, SYSTEM REDUNDANCIES, QUALITY OF COMPONENTS (STAINLESS STEEL COMPONENTS, ABRASION RESISTANT WEAR PARTS, ETC.)

