

San Francisco District FY13 Dredging Projects

Jessica Burton Evans
Navigation Program Manager
San Francisco District
(415) 503-6862

Jessica.L.BurtonEvans@usace.army.mil

WEDA Pacific Chapter
Fall 2012 Conference
Seward, AK



®

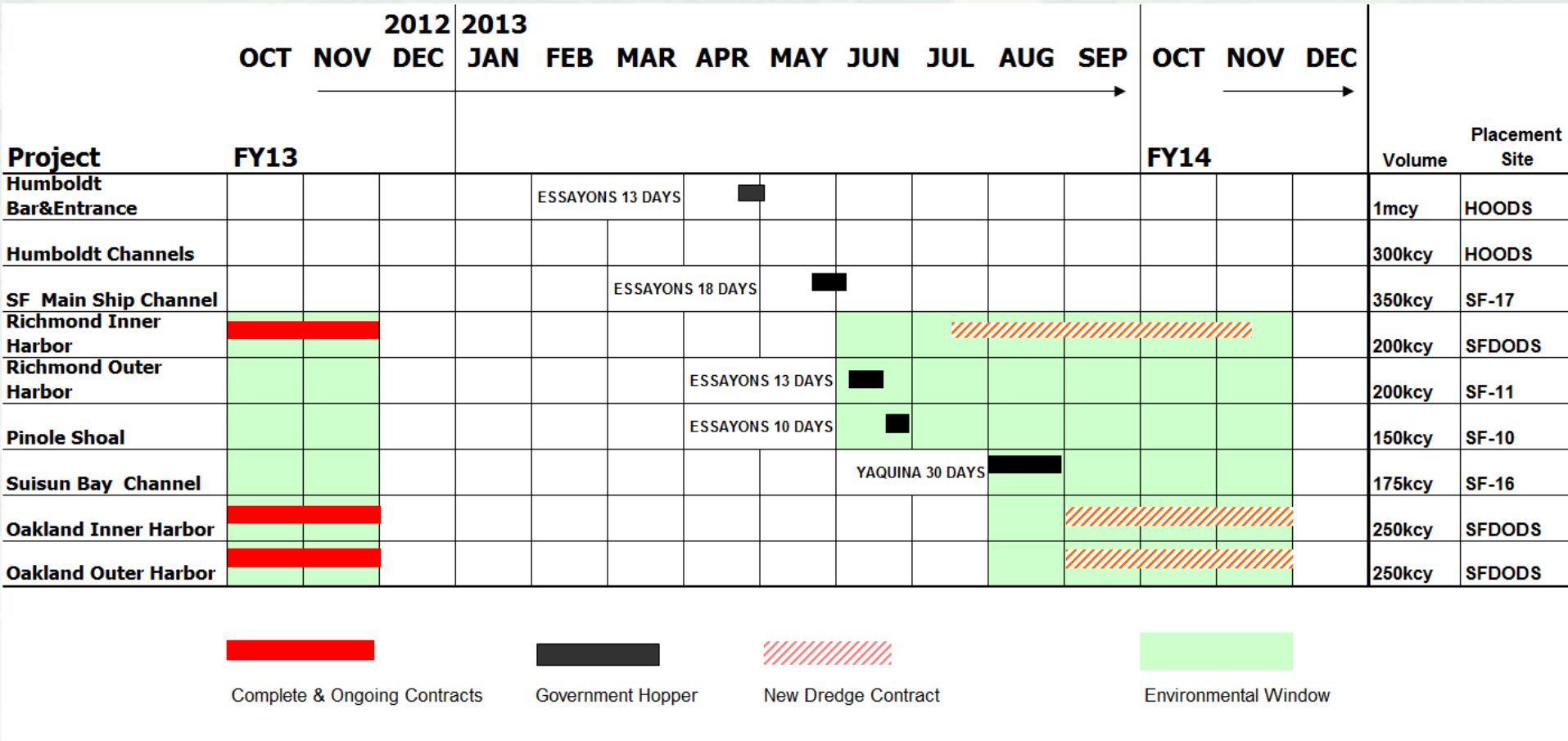
U.S. Army Corps of Engineers

BUILDING STRONG®
San Francisco District

Building Strong on the Cornerstone of the Southwest



Proposed FY13 Dredging Plan



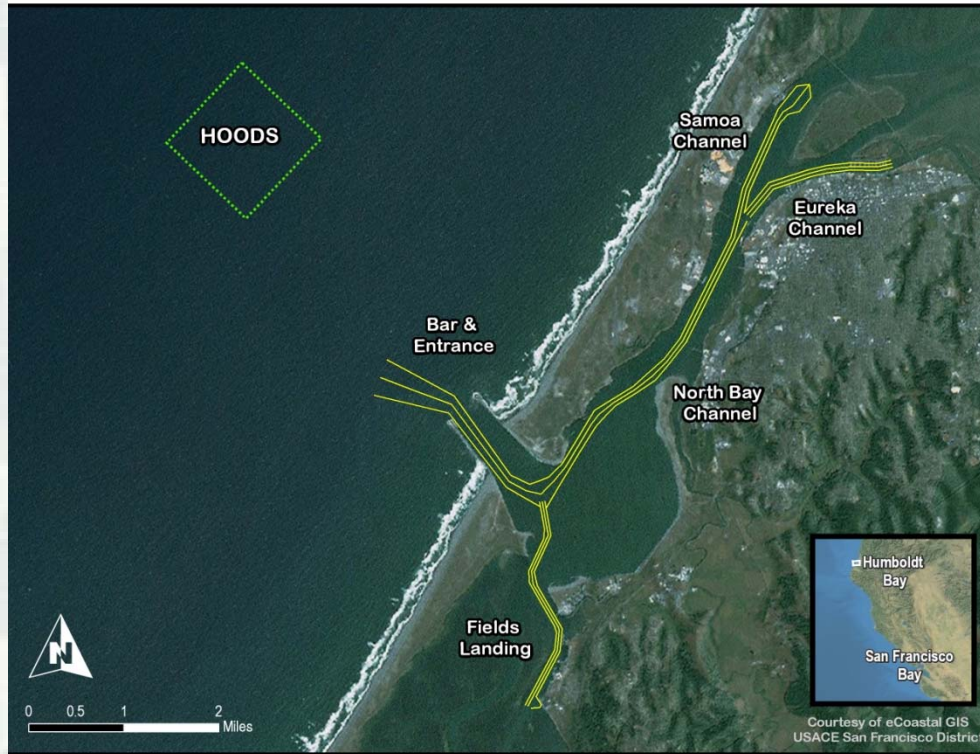
* Based on FY13 President's Budget

Updated: 27 Aug 2012

US Army Corps of Engineers
San Francisco District



Humboldt Bar & Entrance

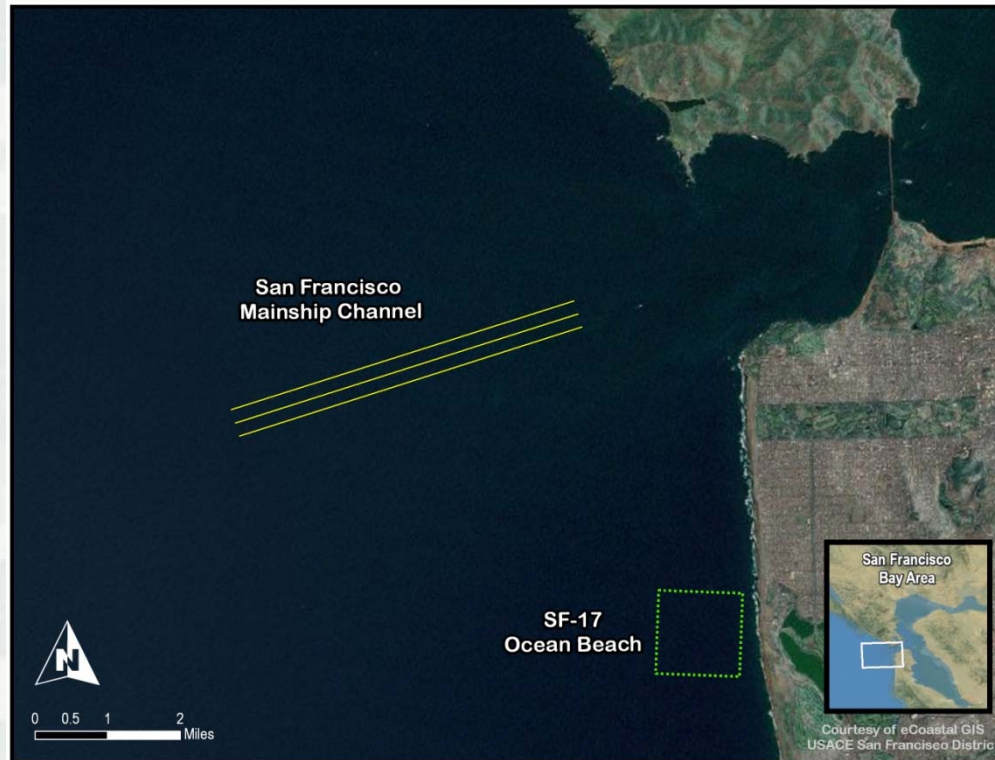


- ~1,000,000 cubic yards
- Government Dredge Essayons
- Start Work: mid-April 2012
 - ▶ 13 days
- Ocean Disposal (HOODS)
- Interior Channels excluded

US Army Corps of Engineers
San Francisco District



San Francisco Main Ship Channel



- ~350,000 + cubic yards
- Government Dredge Essayons
- Start Work: mid-May 2012
 - ▶ 18 days
- Ocean Disposal (SF-17)

US Army Corps of Engineers
San Francisco District



Richmond Inner Harbor



- ~550,000 cubic yards
- Clamshell
- Solicitation: May 2013
- Start Work: July 2013
 - ▶ ~90 days
- Ocean Disposal (SFDODS) or Contractor provided upland/beneficial reuse

Placement may be affected by America's Cup Special Local Regulation.

US Army Corps of Engineers
San Francisco District



Richmond Outer Harbor



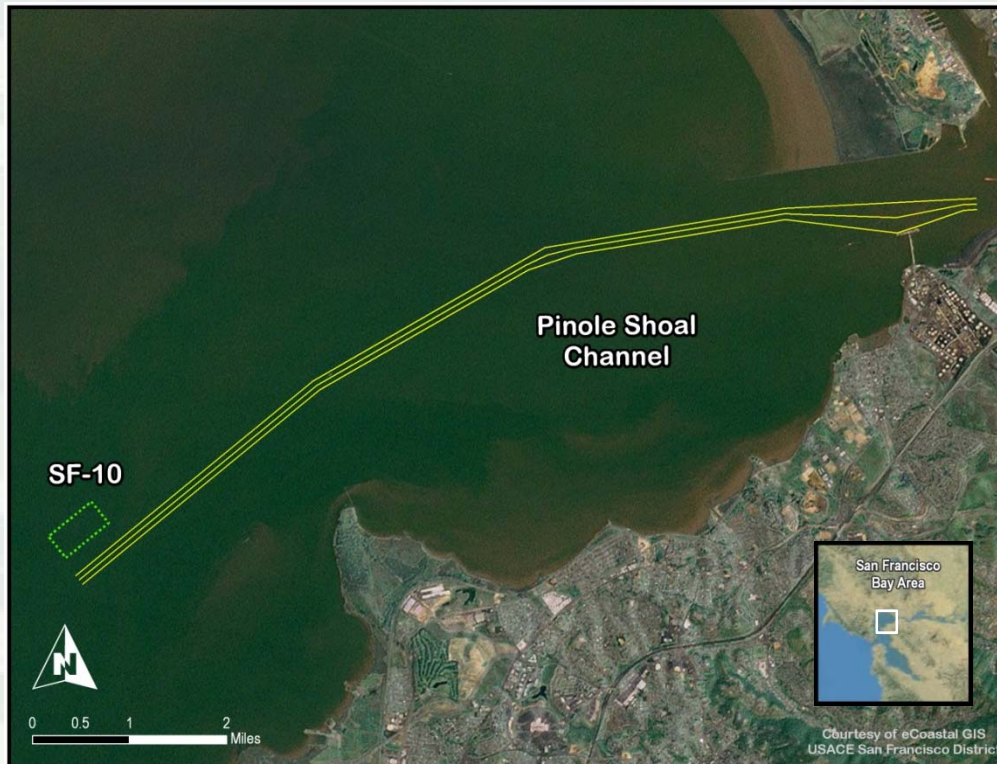
- ~200,000 cubic yards
- Government Dredge Essayons
- Start Work: June 2012
 - ▶ 13 days
- In-Bay Disposal (SF-11)

Placement may be affected by
America's Cup Special Local
Regulation.

US Army Corps of Engineers
San Francisco District



San Pablo Bay / Mare Island Strait (Pinole Shoal)

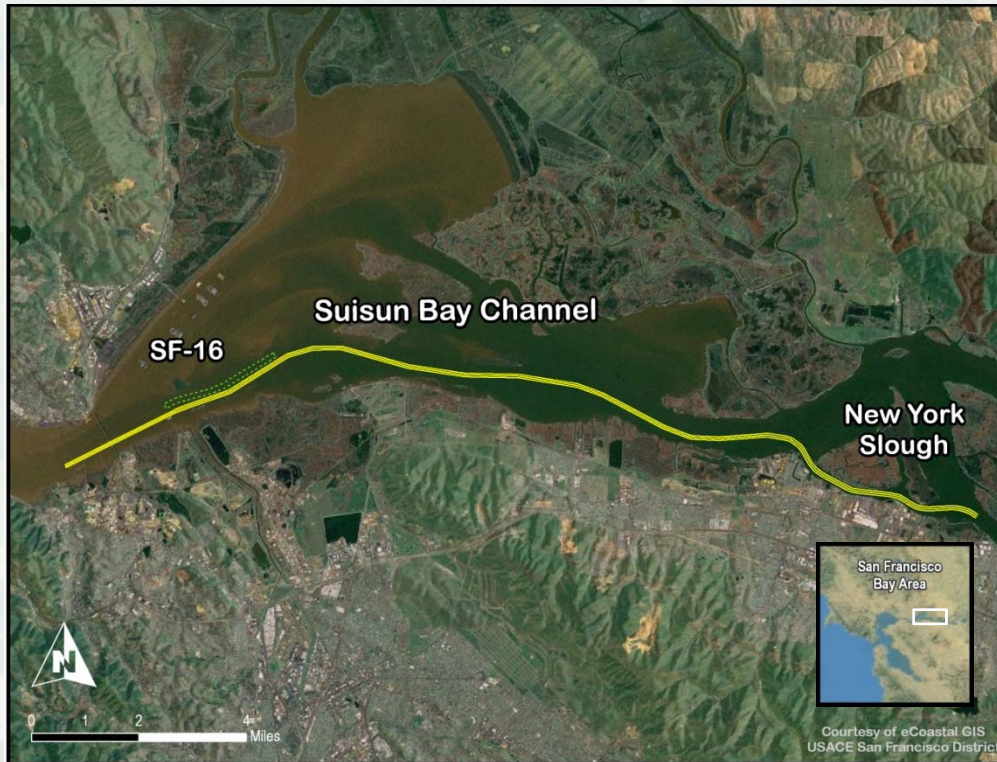


- ~200,000 cubic yards
- Government Dredge Essayons
- Start Work: June 2012
 - ▶ 10 days
- In-Bay Disposal (SF-10)

US Army Corps of Engineers
San Francisco District



Suisun Bay Channel

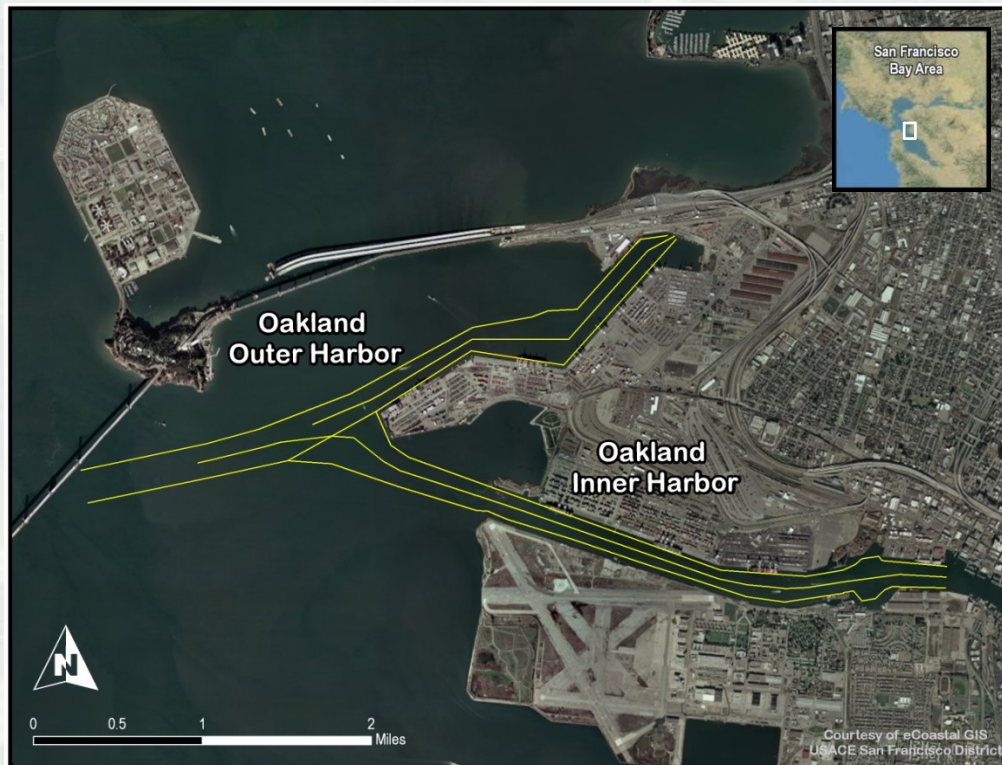


- ~175,000 cubic yards
- Government Dredge Yaquina
- Start Work: August 2012
 - ▶ 30 days
- In-Bay Disposal (SF-16)

US Army Corps of Engineers
San Francisco District



Oakland Inner and Outer Harbor



Placement may be affected by America's Cup Special Local Regulation.

- ~600,000 cubic yards
- Clamshell
- Solicitation: Aug 2012
- Start Work: Nov 2012
 - ▶ ~120 days
- Ocean Disposal (SFDODS) or Contractor provided upland/beneficial reuse
- Solicitation and Award pending availability funds

US Army Corps of Engineers
San Francisco District



Contact Information

- San Francisco District Navigation Program:
www.spn.usace.army.mil/project_programs/navigation_projects.html
- Jessica Burton Evans
Navigation Program Manager
Jessica.L.BurtonEvans@usace.army.mil
415.503.6862

