



Port of Long Beach

Deep Draft Navigation Study



Port of
LONG BEACH
The Green Port



**US Army Corps
of Engineers®**

WEDA Pacific Chapter Conference
San Diego, CA
October 20, 2016

WHAT IS THE PORT?

More than just cranes and ships, the iconic Port of Long Beach is a key economic engine for Southern California and critical to the world trade ecosystem.

PORT OF LONG BEACH 101



#2

Busiest port in the U.S.



\$180
BILLION

Worth of cargo is imported through the port annually



300
THOUSAND

Jobs created regionwide

Although a public agency, the Port's operations are not supported by tax dollars.

Instead, its revenues come from leasing marine terminals.



\$4 billion in capital projects

Investing in the Future

Big Ship Ready

18,000 TEU



Overall Length = 1,306 ft.

Beam = 177 ft.

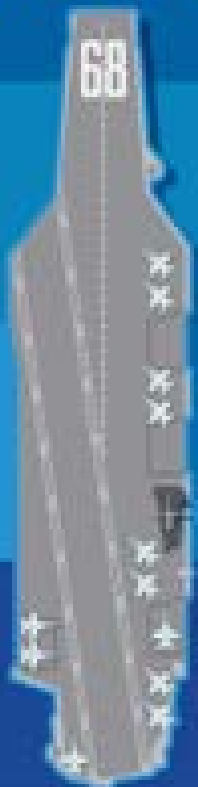
Design Draft = 47.5 ft.

Deepest Draft = 52.5 ft.

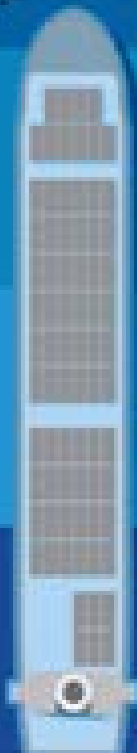
Deadweight Tons = 185,000

As Tall As...

USS Nimitz
(1,092 ft.)



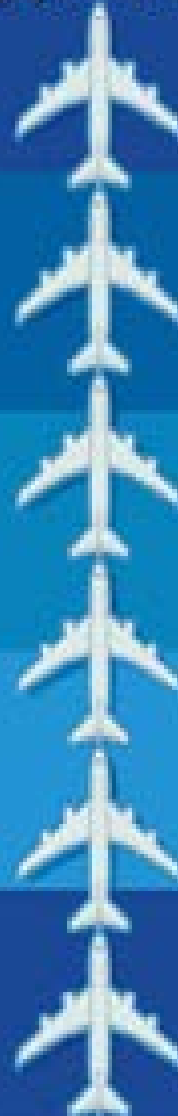
7,100
TEU Ship
(965 ft.)



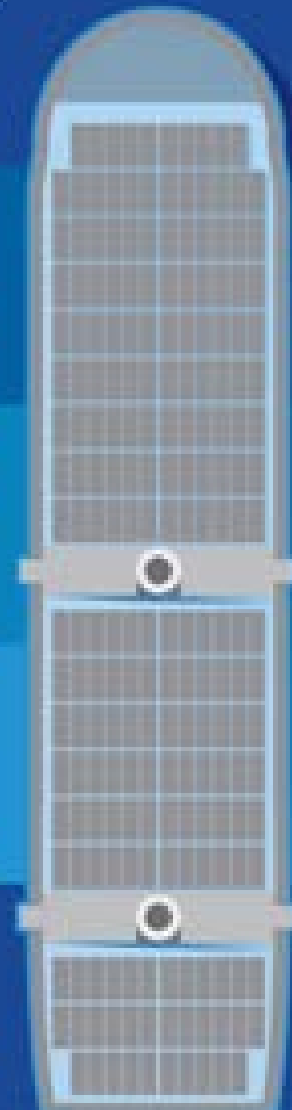
Empire State
Building
(1,454 ft.)



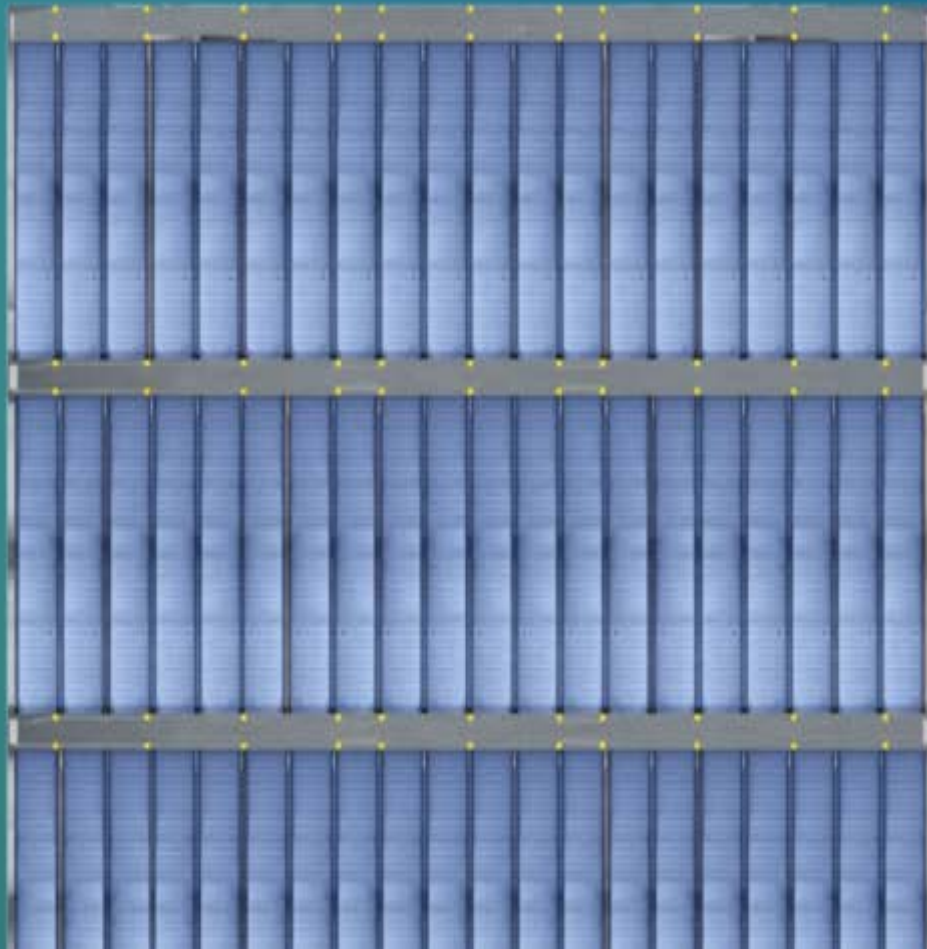
Boeing
747
(1,392 ft.)



14,000
TEU
Ship
(1,250
ft.)



as **WIDE** as



a **12-LANE**
FREEWAY

Ultra Large Crude Carrier

M/V CHLOE



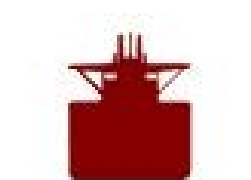
LOA = 1,100 ft.

Beam = 197 ft.

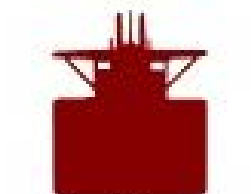
Displacement = 312,000 tons

Draft = 65 ft.

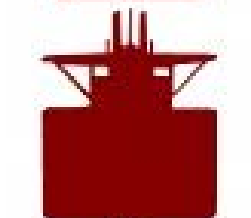
Summer Max Draft = 74 ft.



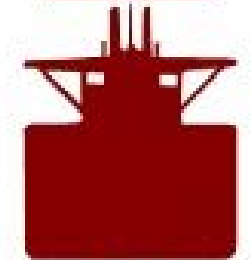
Coastal Tanker (205 m)



Aframax (245 m)



Suez-Max (285 m)



VLCC (330 m)

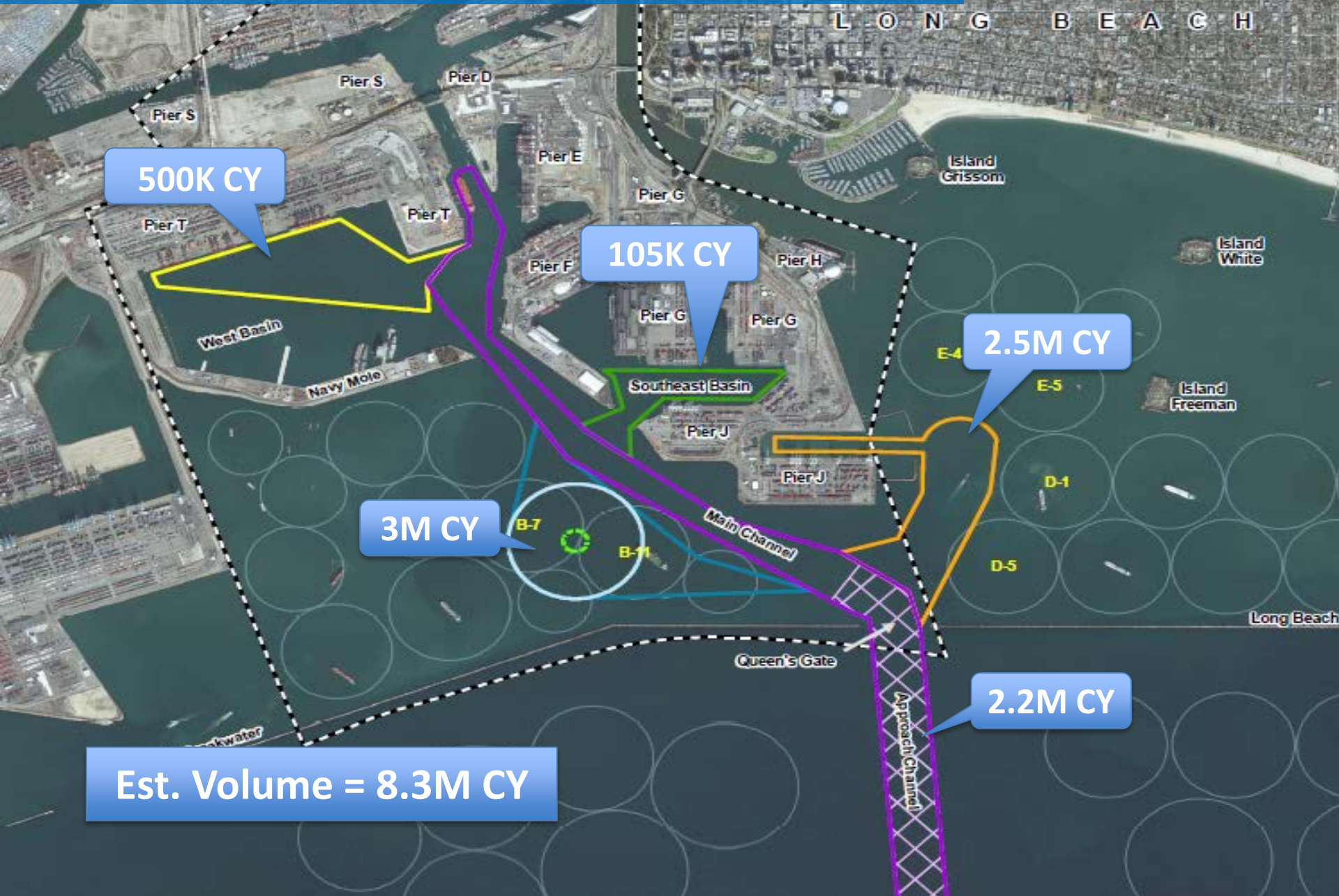


ULCC (415 m)

Crude Carrier Lightering



Potential Dredge Locations



L O N G B E A C H

500K CY

105K CY

2.5M CY

3M CY

2.2M CY

Est. Volume = 8.3M CY



Los Angeles

Long Beach

Garden Grove

Westminster

Santa Ana

Los Angeles Harbor

San Pedro Bay

Fountain Valley

Surfside
Borrow Site

Huntington Beach

Costa Mesa

LA-2
(US EPA)

Newport Beach

126

LA-3
(US EPA)

Potential Placement Sites

Environmental Considerations

The background image shows an offshore oil rig at sea. A large crane is in the process of dumping a large volume of water into the ocean, creating a significant splash. The rig is white with red structural elements. In the background, there are several other cranes and structures, suggesting a busy port or offshore construction site. The sky is clear and blue.

EIR/EIS

Air Quality

Sediment and Water Quality

Harbor and Benthic Habitat=

Milestone Schedule



Alternatives Milestone	Mar 2016
Tentatively Selected Plan	Feb 2017
Agency Decision Milestone	Aug 2017
Civil Works Review Board	Jan 2018
Chief's Report	Jul 2018