
Port of San Diego
Restoration & Enhancement Project
South San Diego Bay

Eileen Maher
Assistant Director, Environmental Services
October 27, 2011

South San Diego Bay Restoration & Enhancement Project

- Chula Vista Wildlife Reserve
- Emory Cove
- A-8 Anchorage
- USFWS restoration
 - Ponds 10, 10A & 11



Restoration & Enhancement Chula Vista Wildlife Reserve

■ Grant funding provided by

- US Environmental Protection Agency –
 - West Coast Estuaries Initiative
- Port Environmental Fund
- California Coastal Conservancy
- US Fish & Wildlife Service
- NOAA – stimulus funding

■ **Assistance provided by**

■ Volunteer Organizations

- SD Audubon Society
- SD Oceans Foundation
- Ocean Discovery Institute
- Coronado Rotary Club

Restoration & Enhancement Project

South San Diego Bay

- Restoration of 280 acres in South San Diego Bay in conjunction with the USFWS
 - Port's portion:
 - ❑ 55 acres at Chula Vista Wildlife Reserve
 - ❑ 12 acres at Emory Cove
 - ❑ Excavated material to lower the marsh plain & create tidal channels
 - ❑ Dredged & pumped material for beneficial reuse
-

Pre Construction - Chula Vista Wildlife Reserve



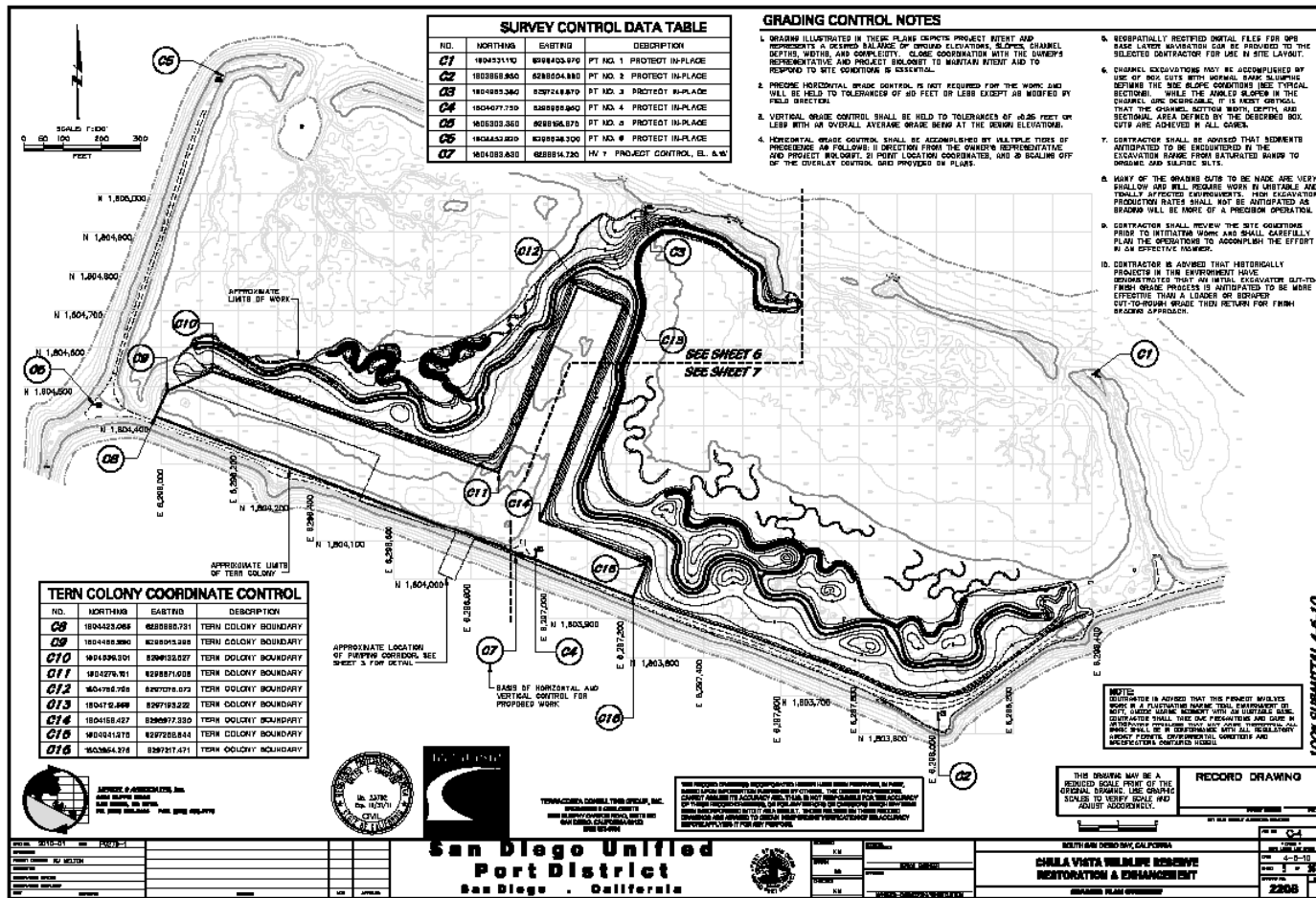
Pre-construction Site Conditions



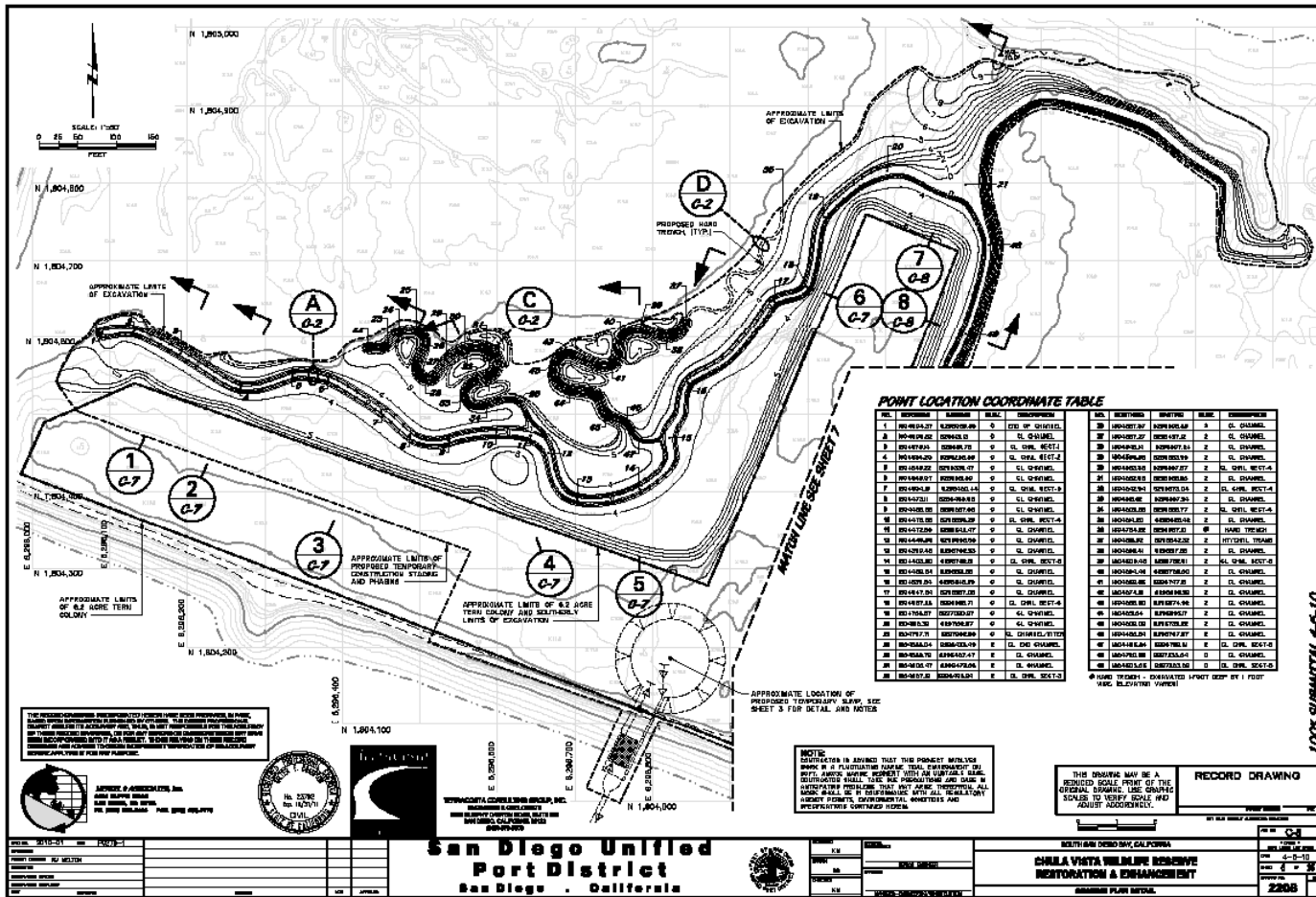
Pre-construction Site Conditions



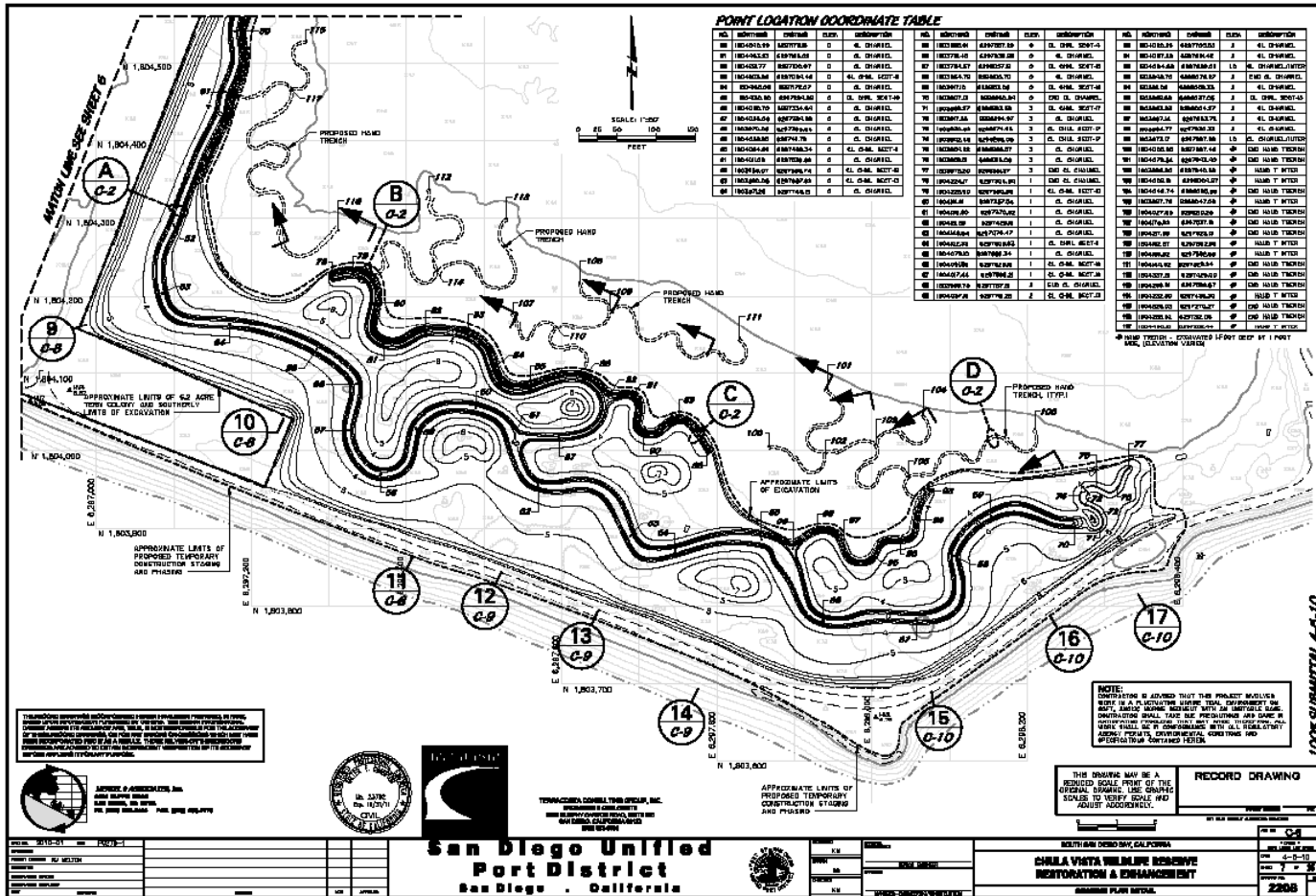
Salt Marsh Design



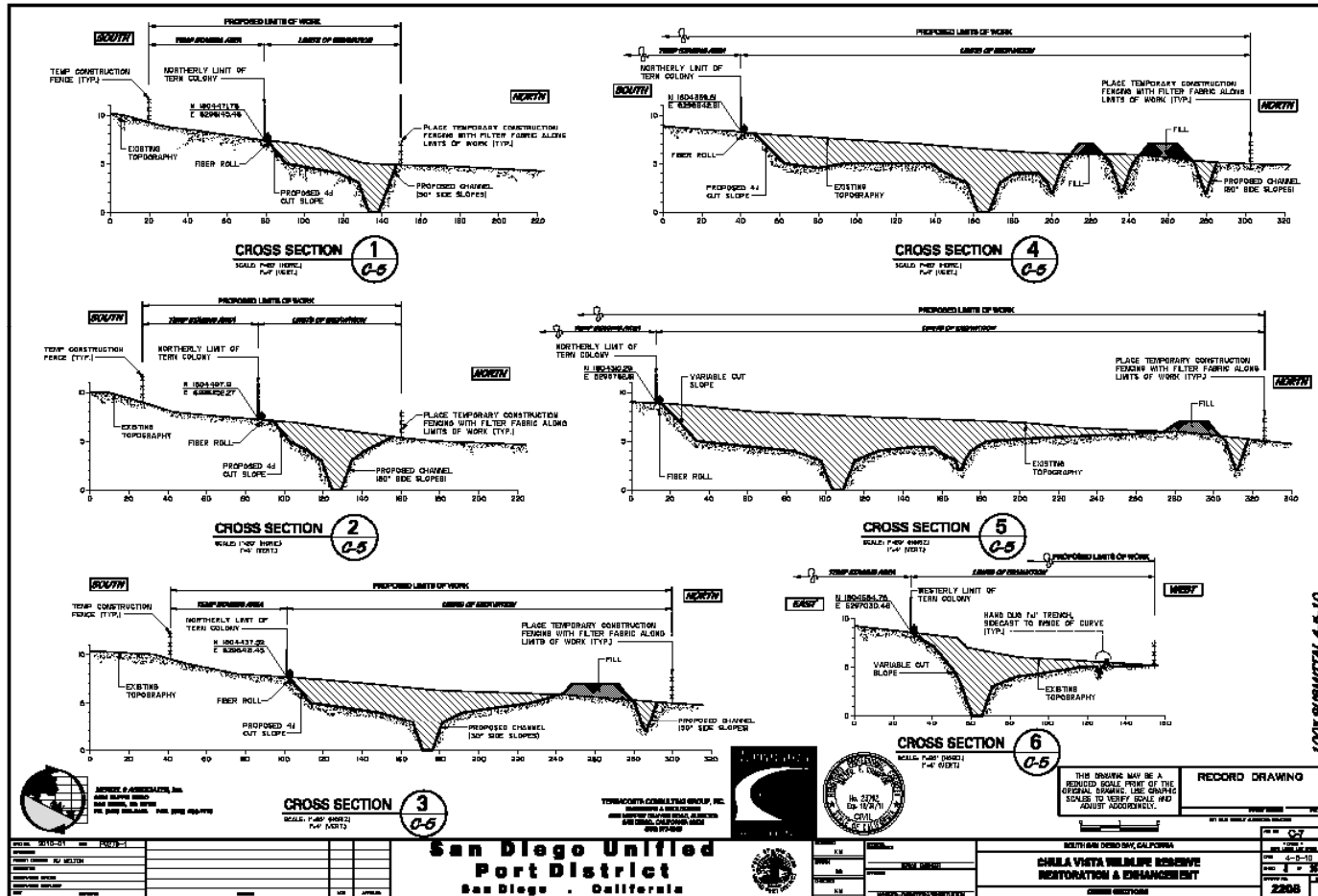
Salt Marsh Design – West Basin



Salt Marsh Design – East Basin



Salt Marsh Design



Permit - Silt Curtains and Turtle Screen



Chula Vista Wildlife Reserve Excavation



CVWR – Excavation & Stockpiling



Dredging & Pumping



Pipeline from CVWR to Pond 11



Pond 11 Discharge



Photo Documentation



Post Construction Aerial Photo



West Basin



Post-Construction East & West Basins



Excavation Around Nesting Site



West Basin – High & Low Tide



Pond 11 – Pre-construction



- An estimated 61,000 cubic yards of material
- Hydraulically dredged
- To create nesting beach

Pond 11



Pond 11



- 19 least tern
- 1 snowy plover
nested at the new
beach



Volunteers Planting CVWR



Emory Cove Restoration



Emory Cove



Emory Cove Ice Plant Removal



Volunteers



02/19/2011 09:34

02/19/2011 09:34

A-8 Anchorage Debris Removal



Questions

