

# Newport Harbor – 20 Year Dredging Summary

---

WEDA  
CHRIS MILLER,  
PUBLIC WORKS MANAGER  
OCTOBER 30, 2019

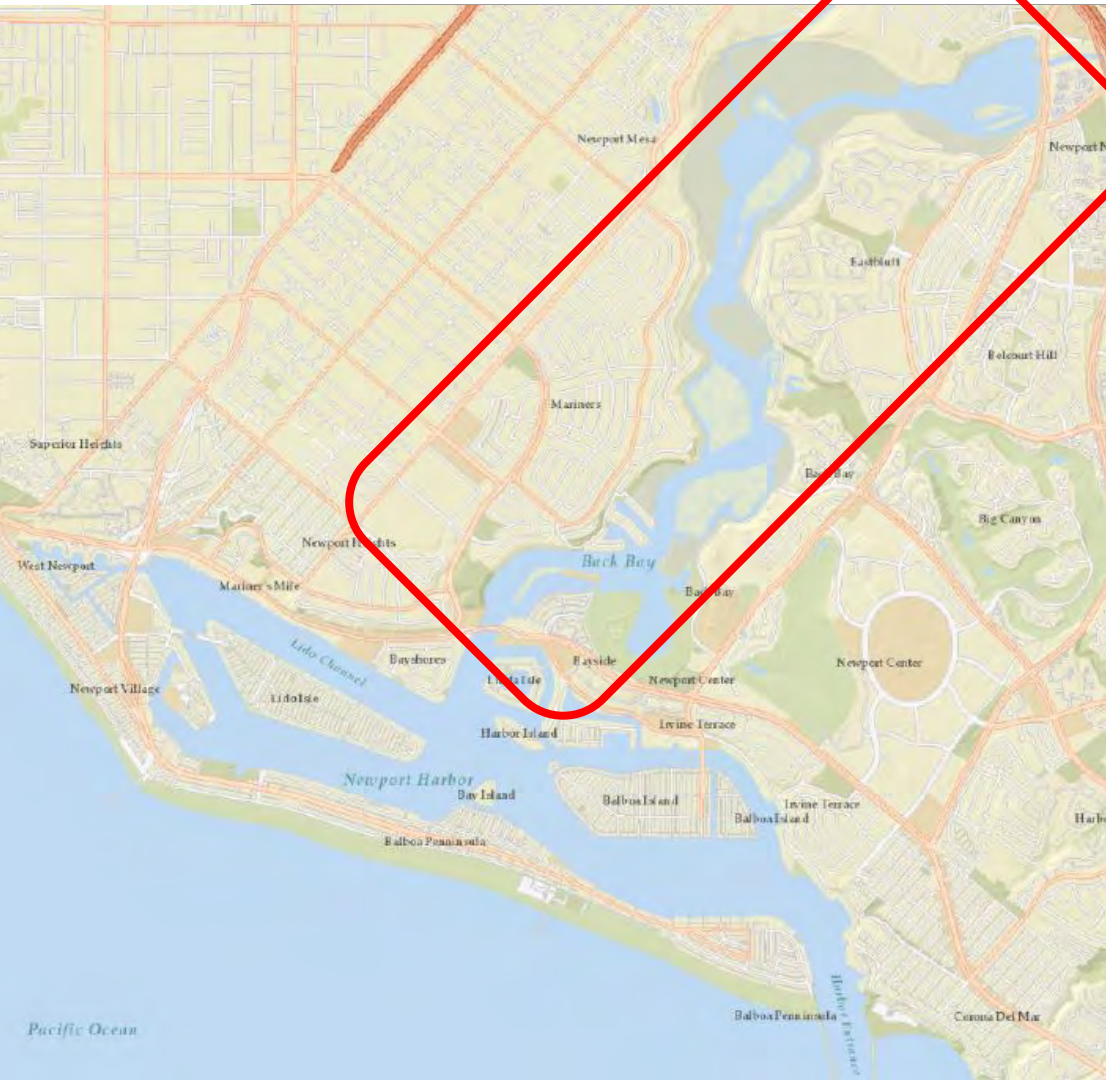


# Projects...

---

1. Upper Bay Ecosystem Restoration (Corps/State/County/City)
2. Rhine Channel (City)
3. Lower Bay Dredging – Phase I (Corps/City/County)
4. Marina Park (City)
5. Regional General Permit (RGP-54) In-Slip Dredging (City)
6. Eelgrass Management Plan (City)
7. Lower Bay Dredging – Phase II (Corps/City)

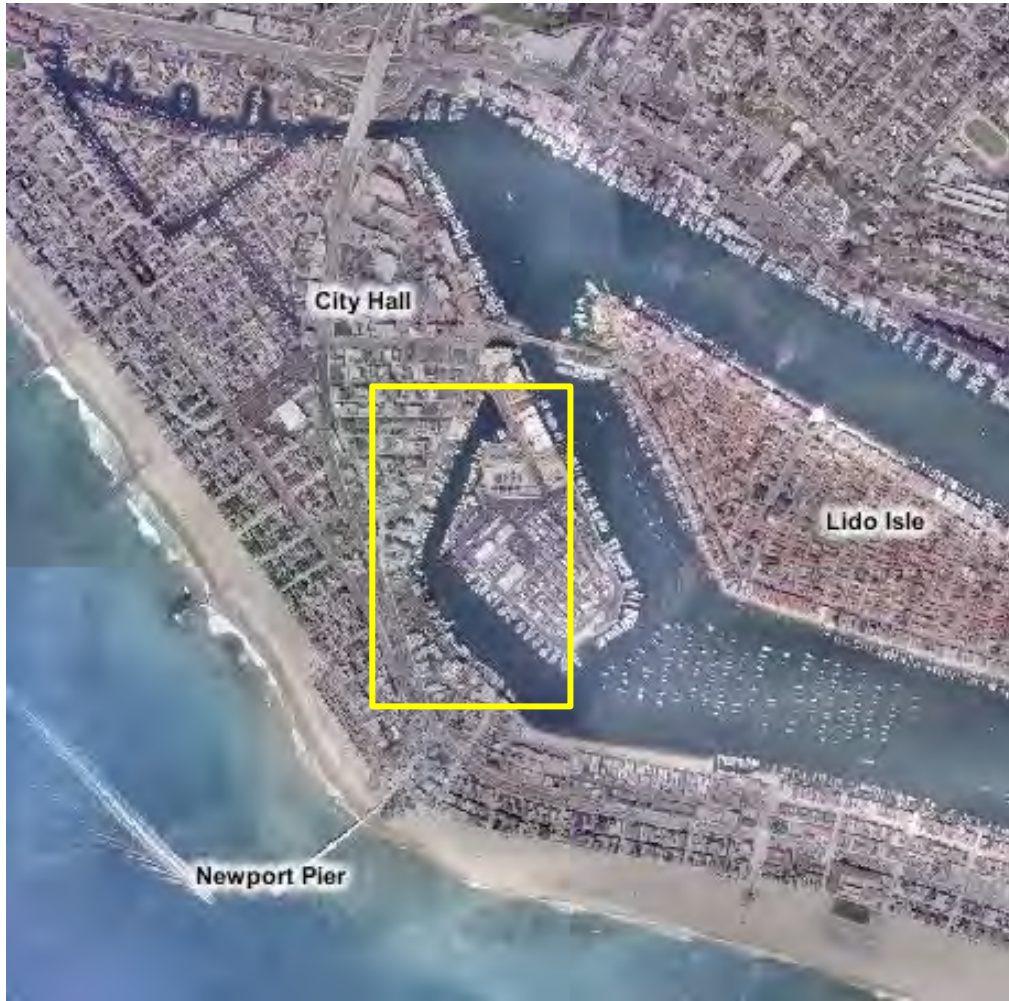
# Upper Bay Ecosystem Restoration





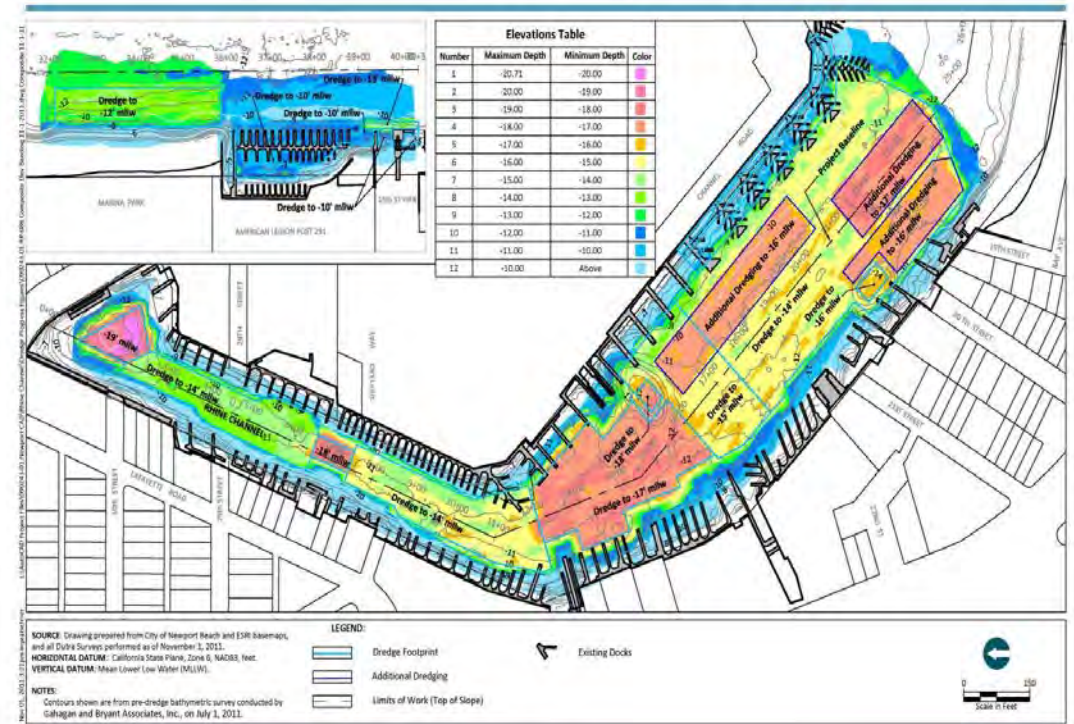


# The Rhine Channel, Lower Newport Bay



# Vessel Relocation Plan

# Chasing the Material



**Figure 1**  
All Dredging Completed as of November 1, 2011  
Rhine Channel Contaminated Sediment Cleanup

# Middle Harbor Fill Site



Over 100  
Piles Installed





# Temporarily Relocated 35 Slip Marina





# Lower Bay Dredging – Phase I



## Middle Harbor Fill Site



# Non-Federal Dredging





# World DREDGING

Mining & Construction

Vol. 47, Nos. 11/12 - 2012

Derrick Palomar dredging near Collins Island in Lower Newport Bay, Newport Beach, California (CA) with a 14 yd<sup>3</sup>, 14' x 14' footprint Cable Arm Environmental Clamshell designed to meet low levels of turbidity for water cleanliness. Contractor RE Stalte Engineering, Inc. dubbed the clamshell, A GAMBCHANGER.

## DREDGE DESIGN TECHNOLOGY

## SURVEYING & HYDROLOGY

Parker Gold Cup Pump Drives Dredge Lexington's Suction Cutter... 6

Offshore & Wind Assistance names first maintenance vessels for wind farms and other offshore installations... 10

ALLU Stabilization System builds a way to a healthier and stronger environment... 12

Neptune Flotation... 17

Cable Arm & ClamVision... 19

Battelle Remediation of Contaminated Sediments Conference... 22

WODCON XX - The World's Essential Dredging Event... 27

US Hydro 2013... 30

Serving Ports, Waterways, Mining & Marine Construction Industries since 1965

# Marina Park



**NBGiS**  
NEWPORT BEACH



0 100 200  
Feet

**Disclaimer:**  
Every reasonable effort has been made to assure the accuracy of the data provided, however, The City of Newport Beach and its employees and agents disclaim any and all responsibility from or relating to any results obtained in its use.

10/28/2



**NBGiS**  
NEWPORT BEACH



0 100 200  
Feet

**Disclaimer:**  
Every reasonable effort has been made to assure the accuracy of the data provided, however, The City of Newport Beach and its employees and agents disclaim any and all responsibility from or relating to any results obtained in its use.

10/28/2019









# RGP-54 Dredging Permit



# In-Slip Dredging

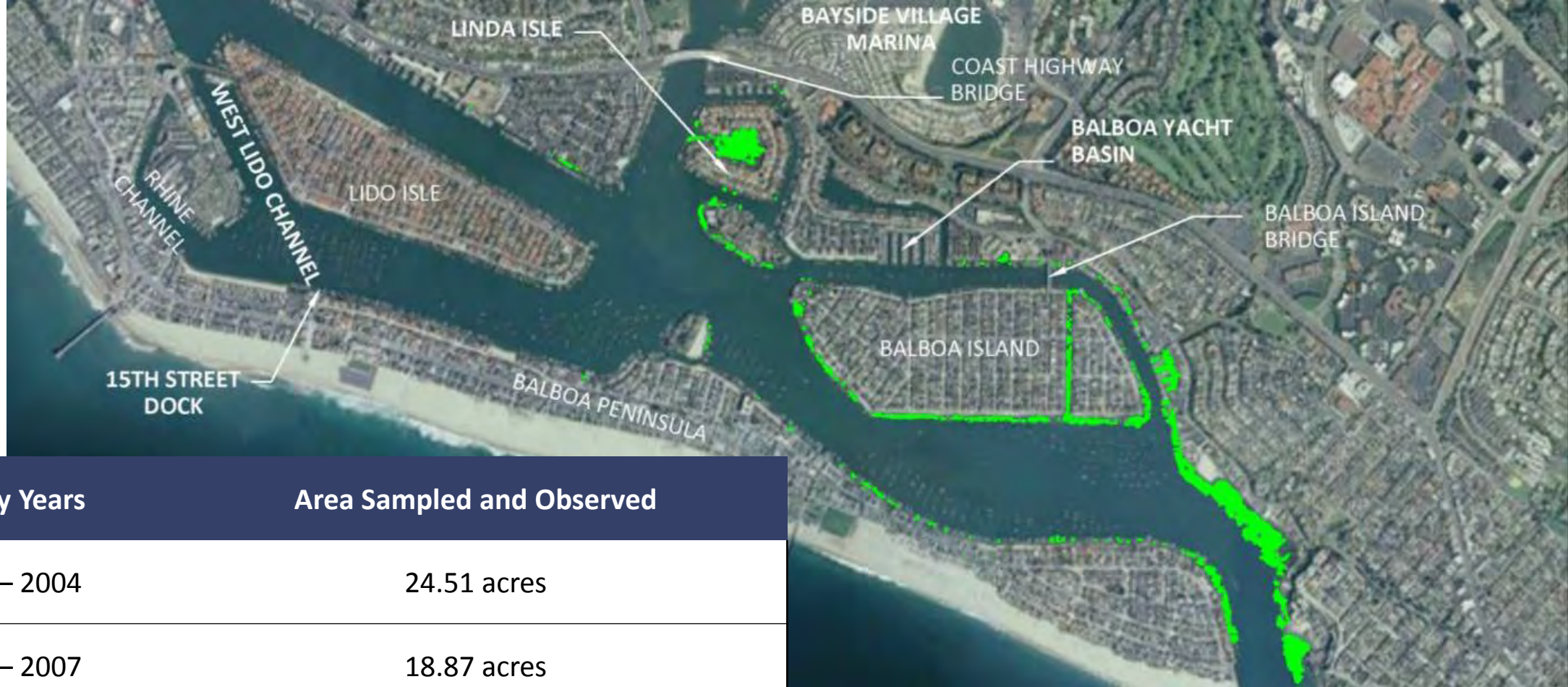


# Eelgrass Management – An Ecosystem-Based Approach





# Biennial Surveys



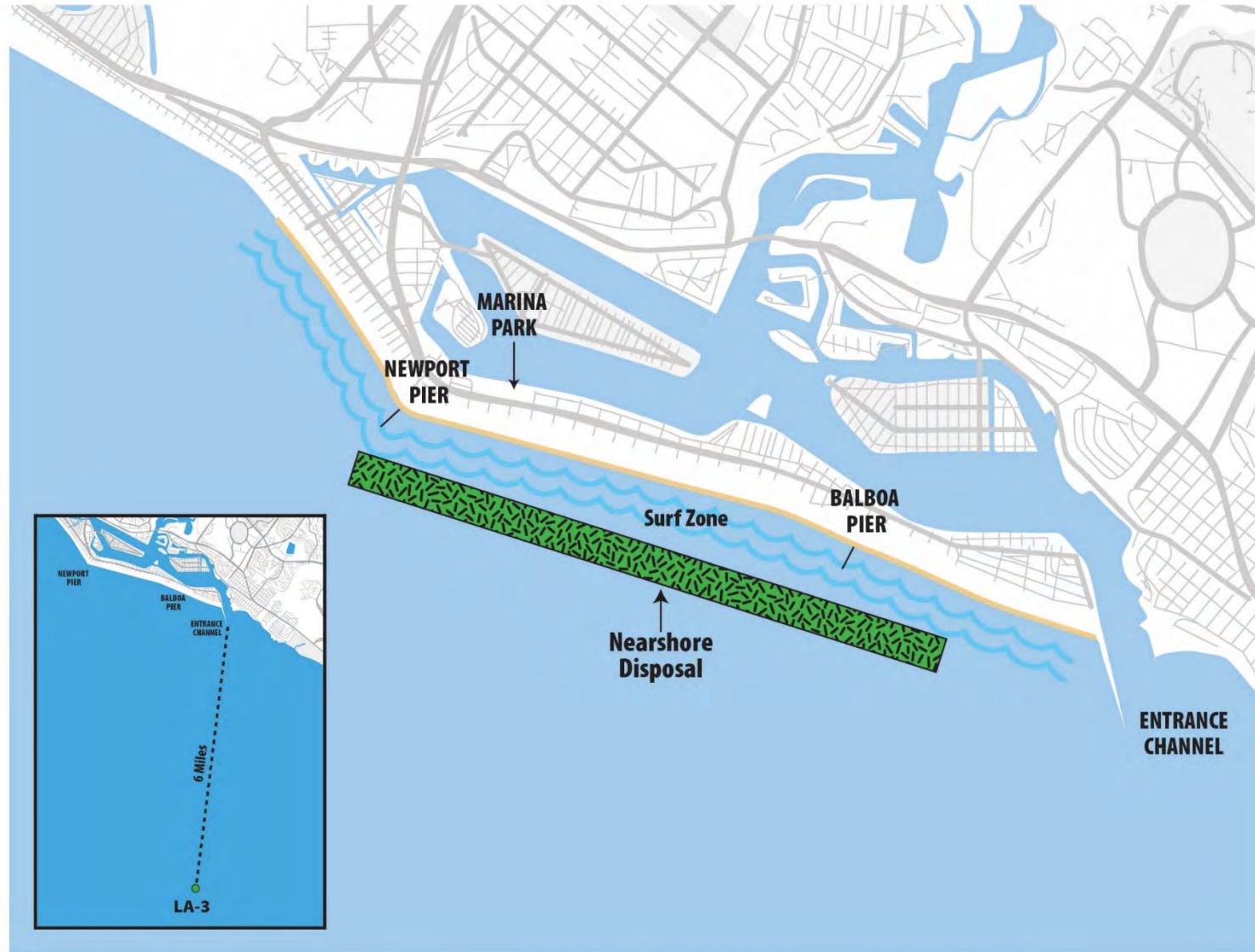
Survey Years	Area Sampled and Observed
2003 – 2004	24.51 acres
2006 – 2007	18.87 acres
2009 – 2010	16.2 acres
2012 – 2014	22.76 acres
2016	27.47 acres
2018	<b>30.22 acres</b>

# Lower Bay Dredging – Phase II

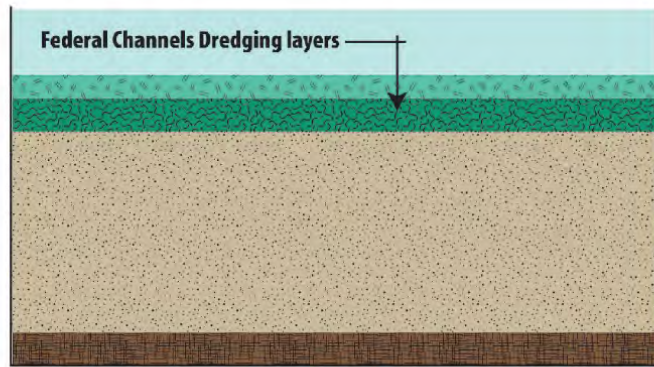




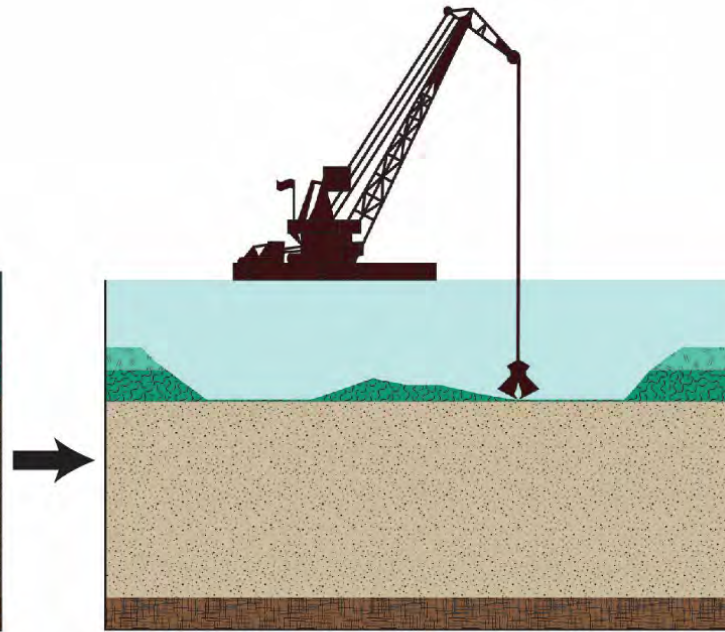
# Nearshore and LA-3 Disposal



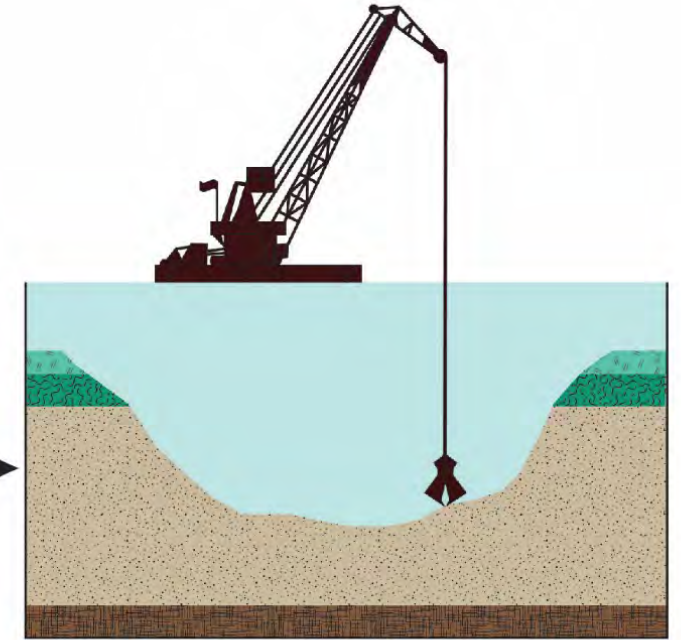
# CAD Construction



1. Existing Conditions



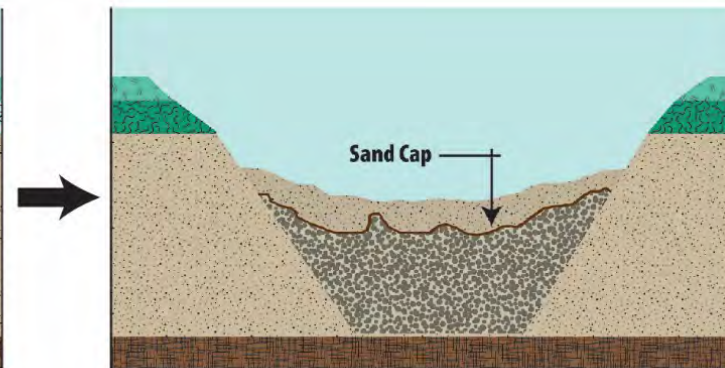
2. Federal Channels Dredging



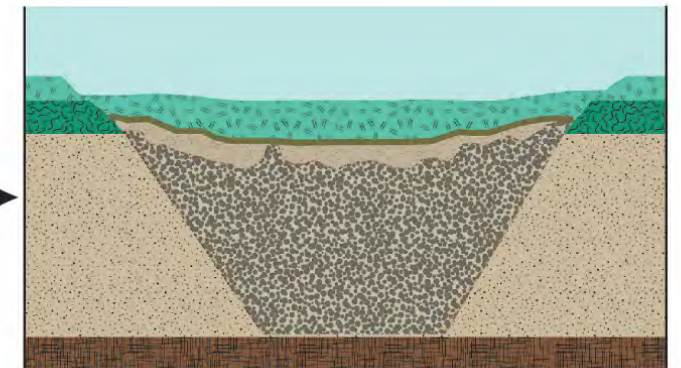
3. Excavate CAD (Nearshore Disposal)



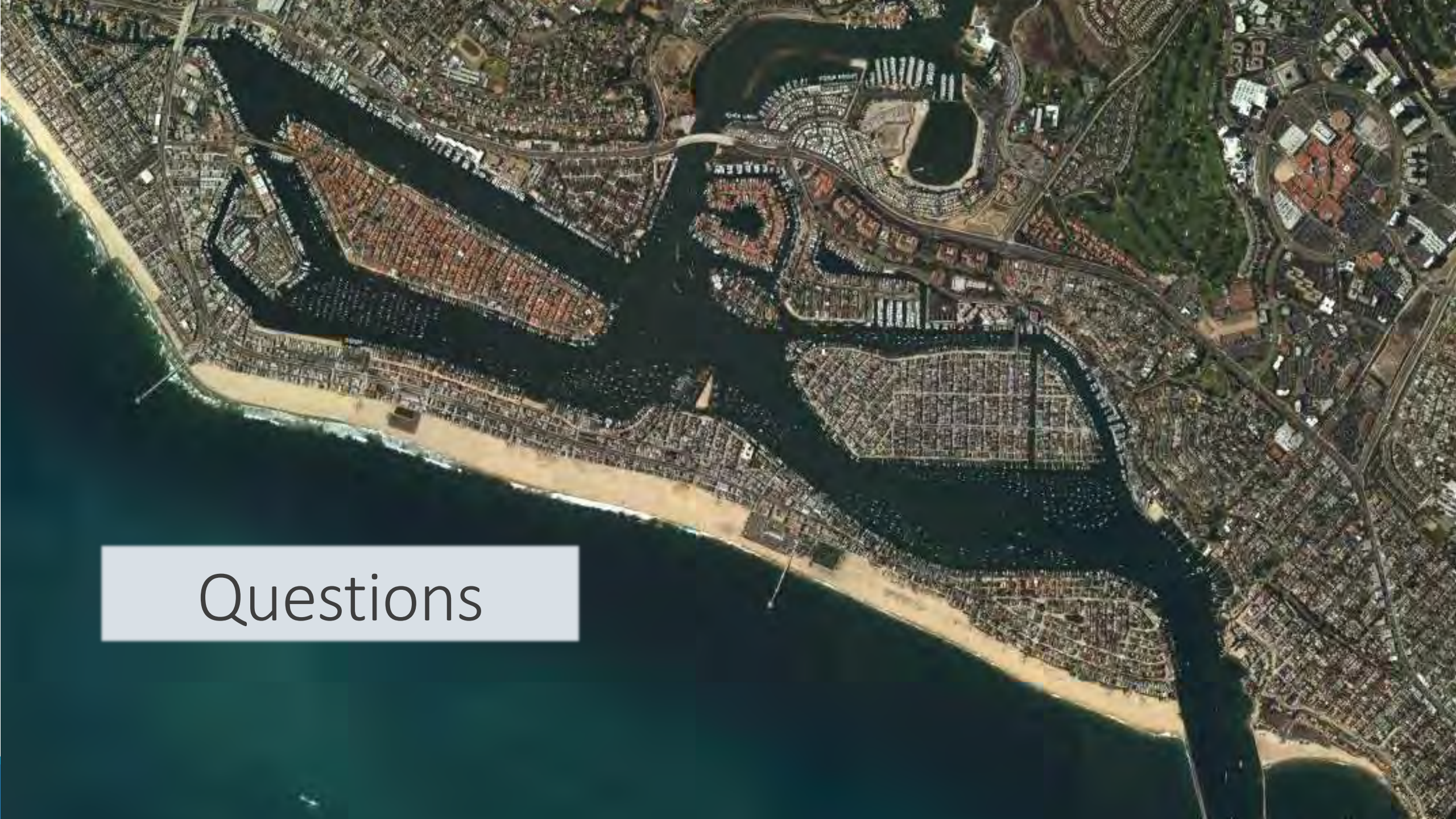
4. Unsuitable Material Placement



5. Interim Cap Placement



6. Additional Material Placement and Final Cap



Questions