

Tiger Creek Dam



Jayme Newbigging
Ballard Marine Construction

Vice President, Major Projects Group

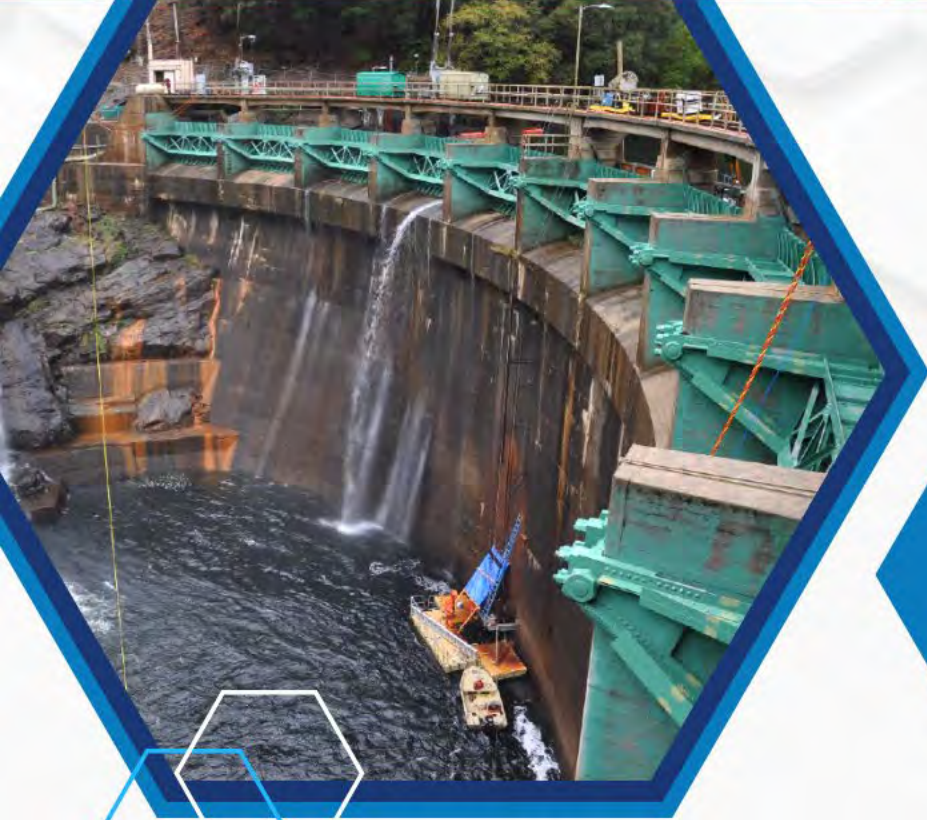


Tino Maestas, PE
Odin Construction Solutions

Technical Director



PROJECT BACKGROUND



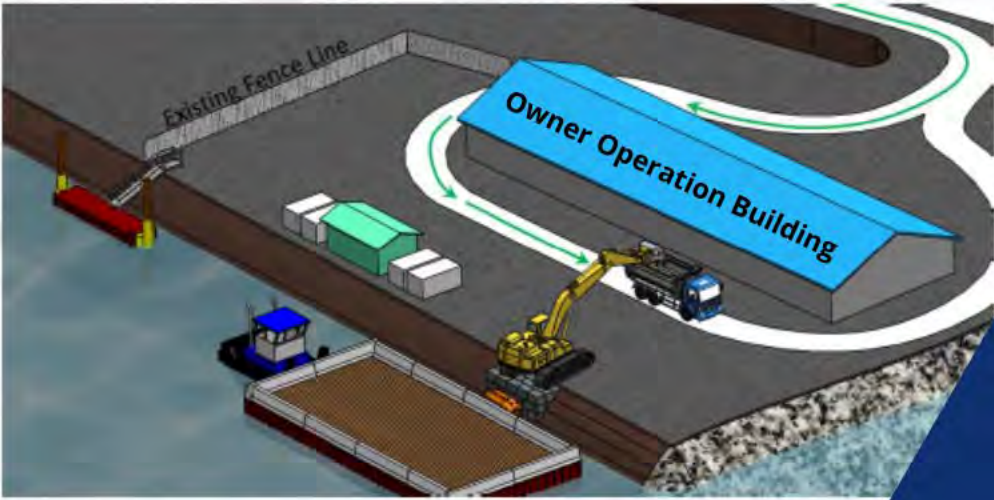
- 120 Feet High, 448 Feet Long
- Concrete Arch dam
- Originally Constructed in 1931



SCOPE OF WORK



MOBILIZATION - EXTREME LOGISTICAL FEAT

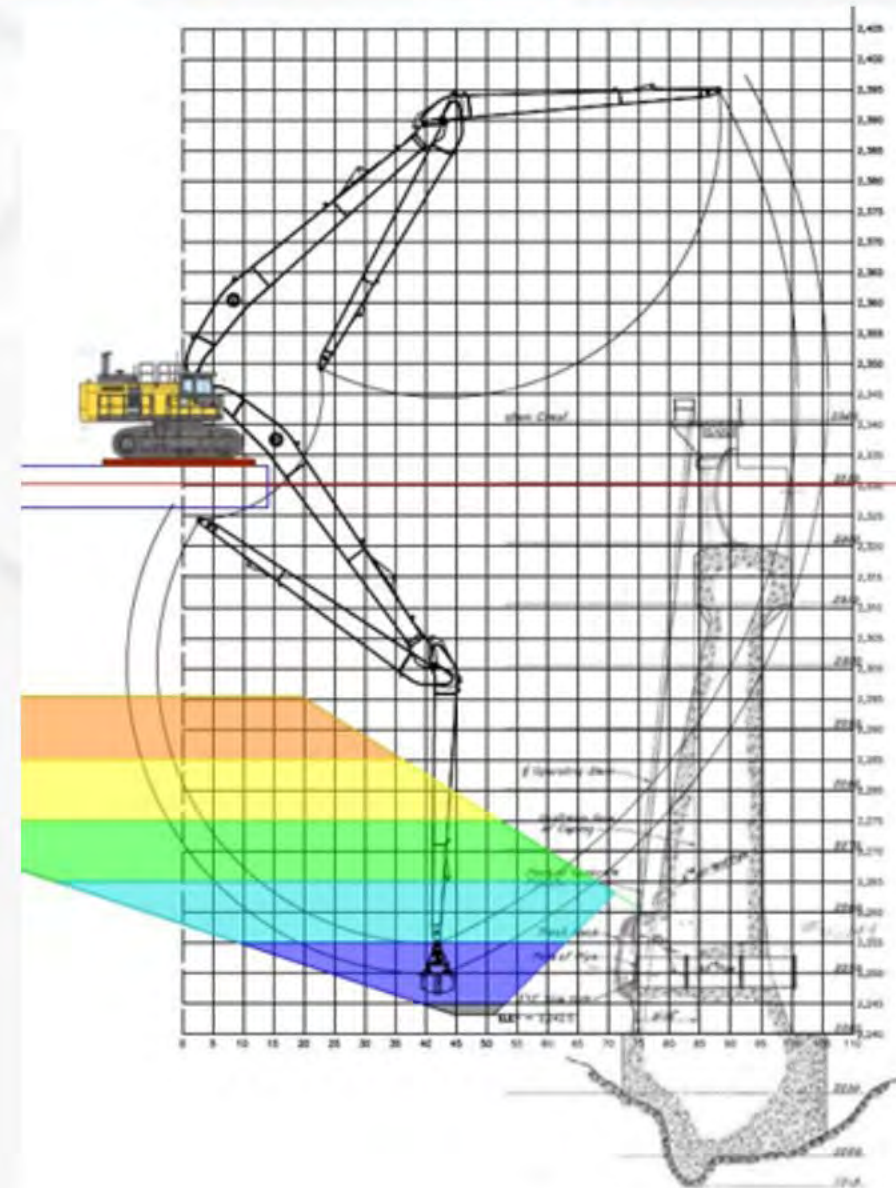


- 90 Truck Loads
- 64 Barge Sections
- 4 Boats
- 4 Skid Steers
- 2 Excavators
- 8 Total Days



GAINING MOMENTUM

- Significant Production Increase
- Limited Sediment Loss
- Sub-foot Accuracy at depths of 85 Ft.
- Bi-Weekly Surveys to Assess Conditions



CHALLENGES ENCOUNTERED

- Original Construction Canyon Topography
- Disposal Site Location
- Mechanical Issues
- Turbidity Spikes



MITIGATION EFFORTS



SUCCESSFUL PROJECT COMPLETION

- 27,000 Cubic Yards of Sediment and Debris Removal
- Low Level Outlet Exposed For Inspection and Repair
- Completed Ahead of Scheduled



ASCE
AMERICAN SOCIETY OF CIVIL ENGINEERS
REGION 9

2020

**Outstanding
Water Project**

In the State of California

**Tiger Creek Afterbay
Dredging & Dam Low
Level Outlet Inspection**

**Black & Veatch,
Ballard Marine Construction,
& Odin Construction
Solutions, Inc.**

Questions?



BALLARD
MARINE CONSTRUCTION



Odin Construction
Solutions

Jayme Newbigging

Ballard Marine Construction

Vice President, Major Projects Group

(360) 216 - 9305 | jayme.newbigging@ballardmc.com

Tino Maestas, PE

Odin Construction Solutions

Technical Director

(916) 660 - 3683 | tmaestas@odinconstruction.com