



Pacific Chapter





WAIKIKI BEACH EMERGENCY EROSION CONTROL USING RAPID DEPLOYMENT SAND FILLED MATTRESSES

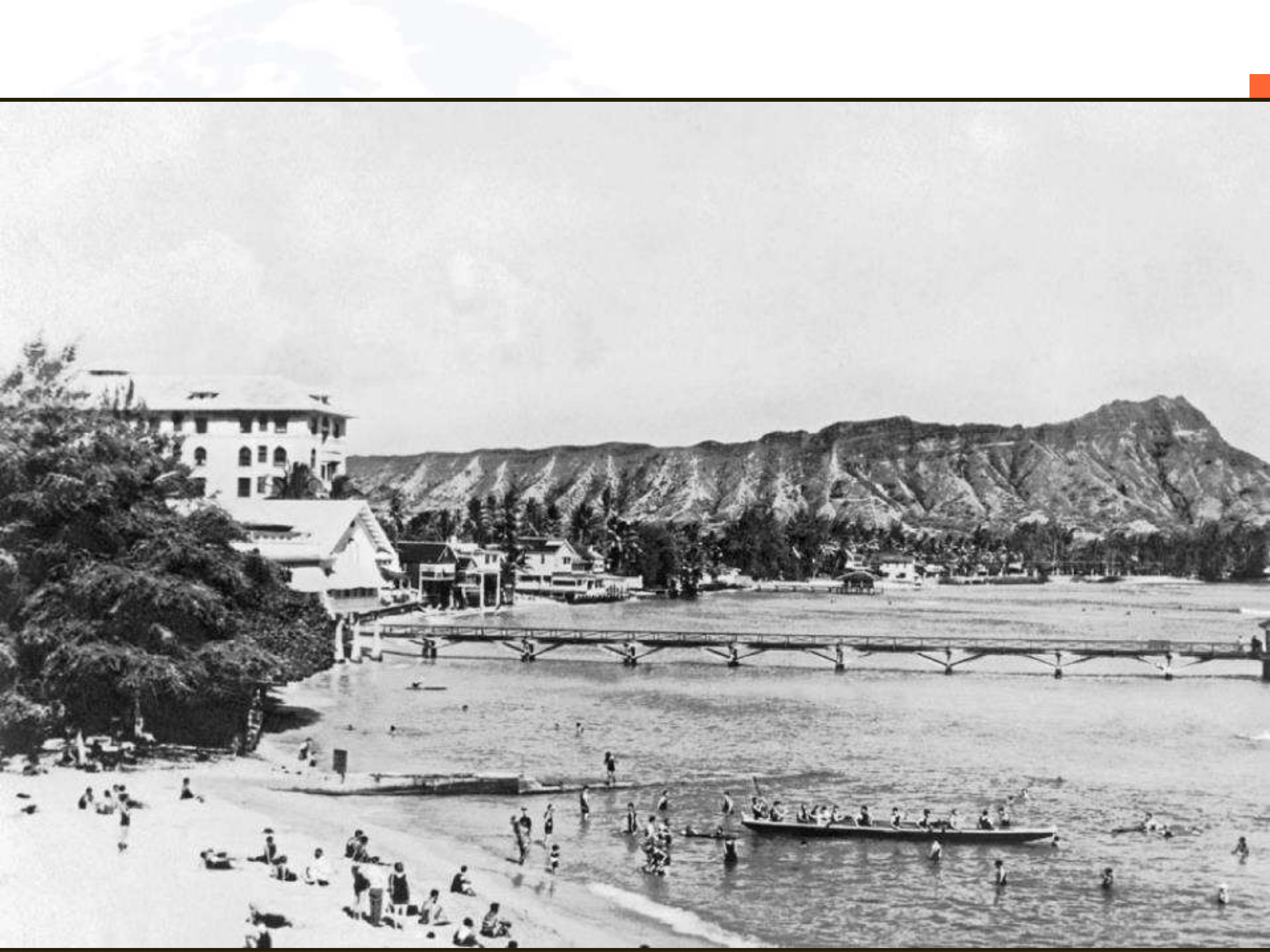
**Dolan Everson – University of Hawaii Sea Grant Program and Waikiki Beach Special
Improvement District**

Troy Ogasawara - GeoTech Solutions

Tom Stephens - TenCate Geosynthetics









Kamaaina56



FLICKR SCAN





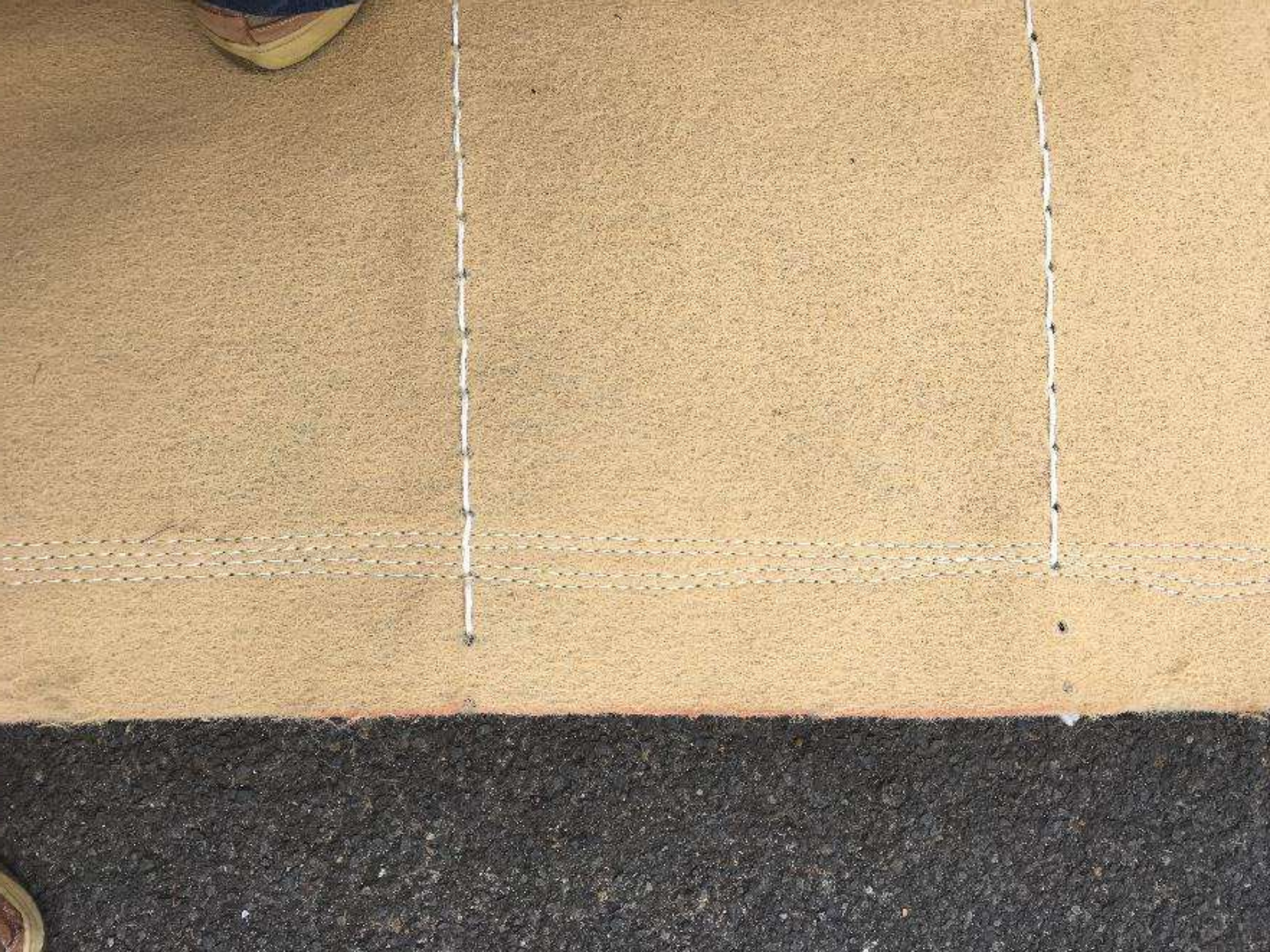




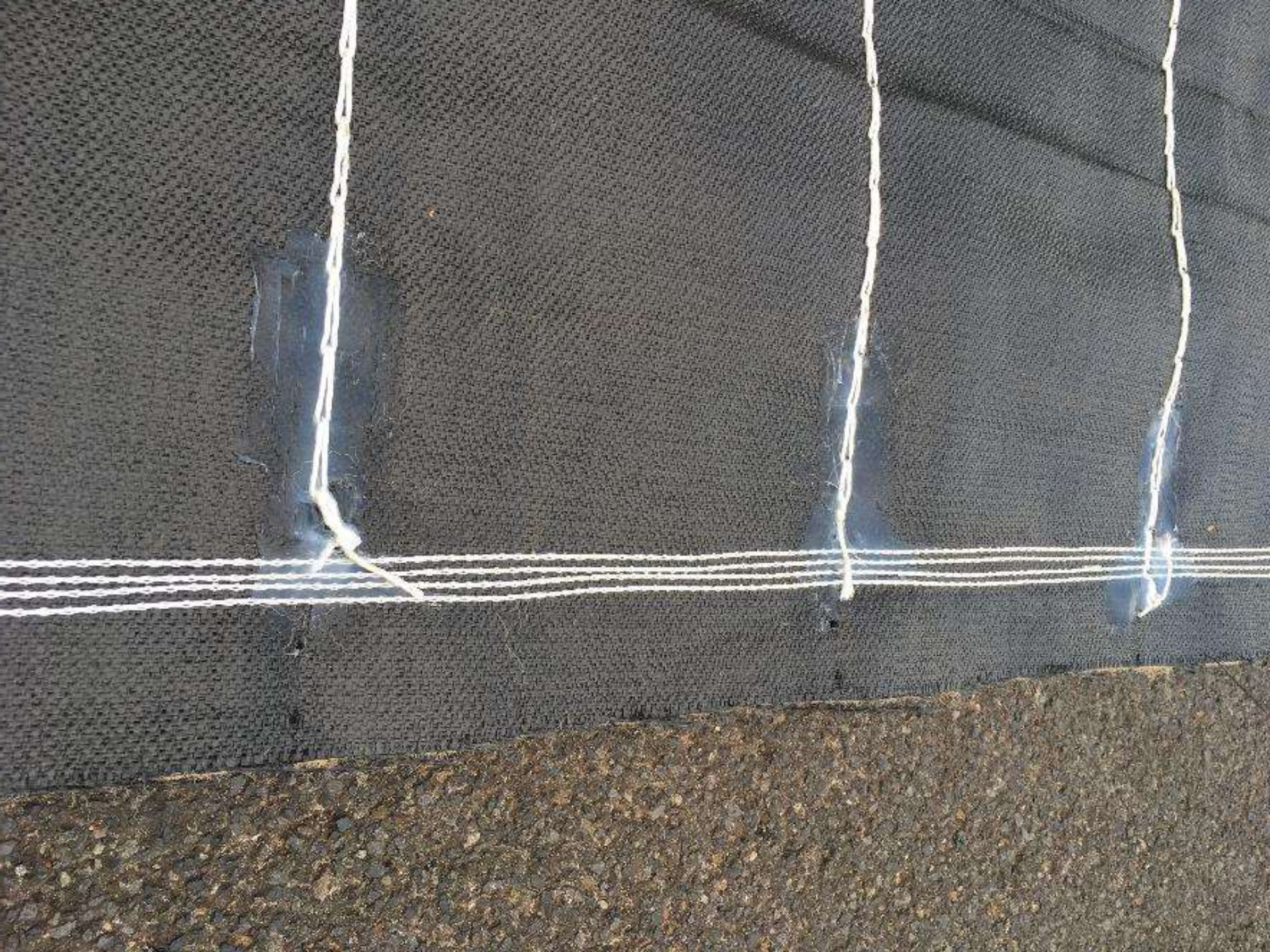


















An aerial photograph of a field with a large, dark cross-shaped mark drawn on the ground. The field is covered in dry, yellowish-brown grass. A blue horizontal line is drawn across the bottom of the image, with a small blue circle at its right end.

GC1200MB – 1ST IMPACT

10



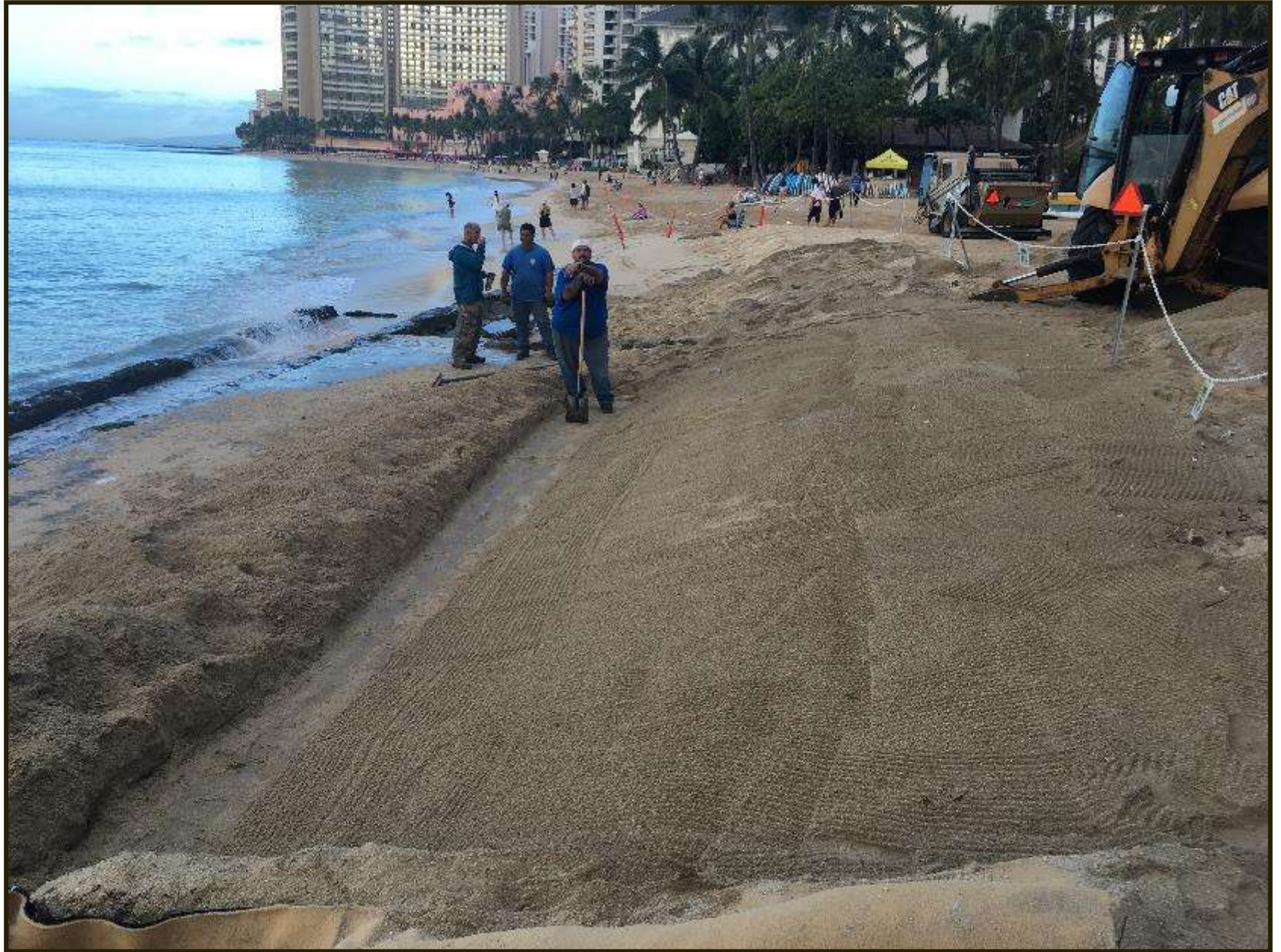
30

A close-up photograph of a sheep's face, focusing on its nose and the surrounding wool. The wool is a light, golden-brown color and appears thick and textured. A dark, irregular mark is visible on the bridge of the sheep's nose, extending slightly downwards. The lighting is bright, highlighting the individual fibers of the wool.

be Impact Testing Overview

NEW GC1200MB - 3RD IMPACT







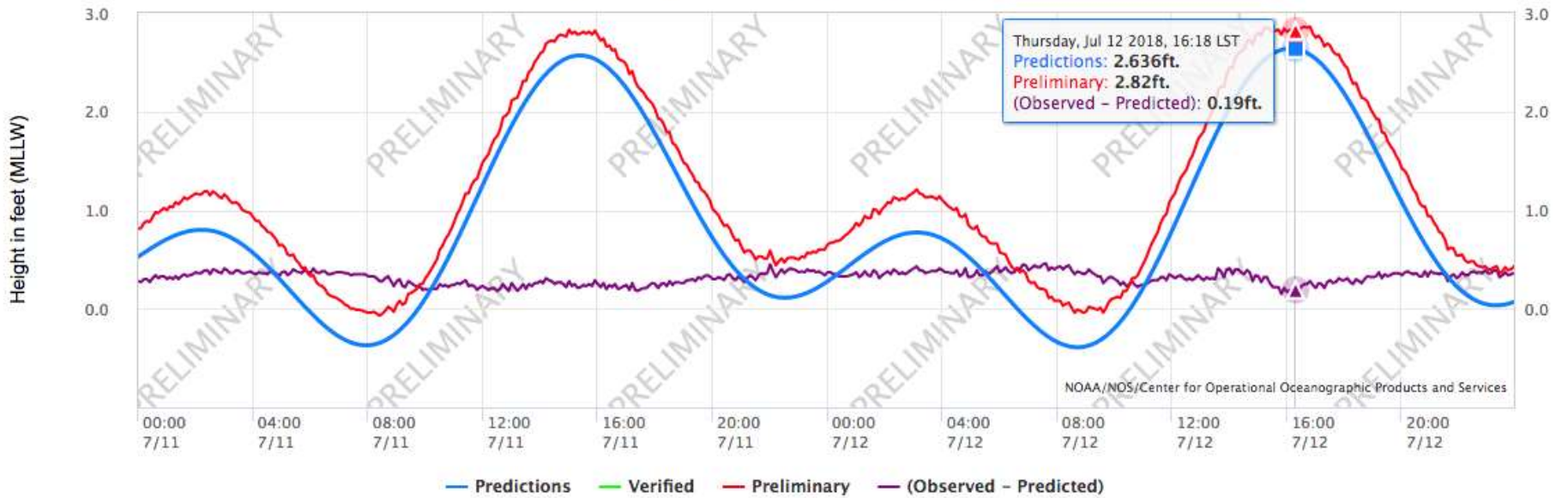








NOAA/NOS/CO-OPS
Observed Water Levels at 1612340, Honolulu HI
From 2018/07/11 00:00 LST to 2018/07/12 23:59 LST















Nov. 2017



Oct. 2018



Questions and Comments