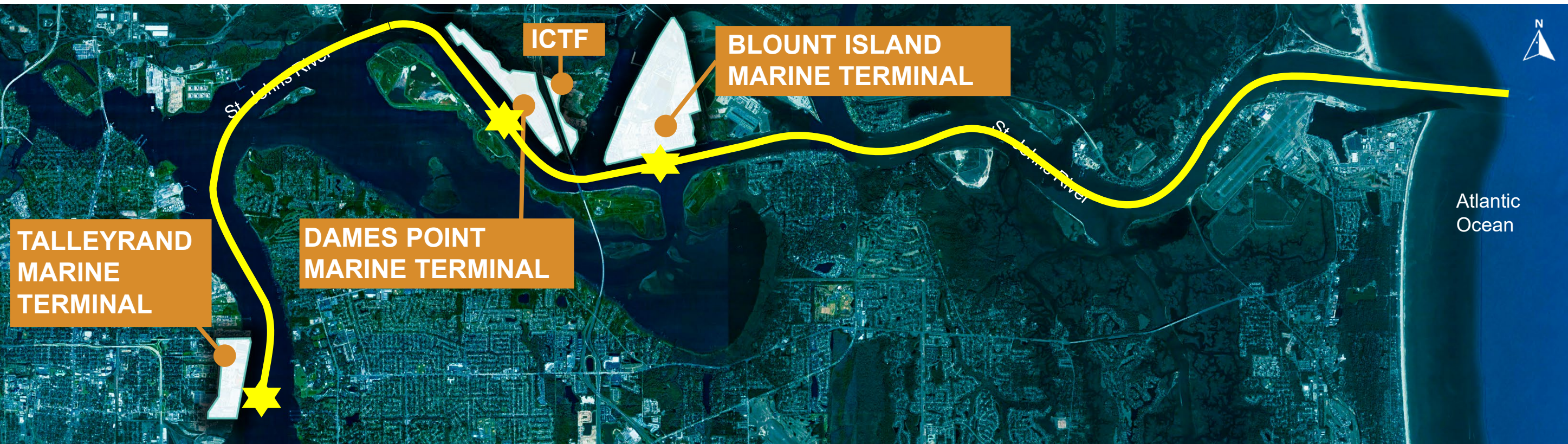


Welcome to Jacksonville!



JAXPORT

TERMINAL LOCATIONS



JAXPORT

Diverse Cargos!

- Containers
- Automobiles
- Break Bulk
- Bulk
- Liquid Bulk
- Military Cargo
- Cruise

JAXPORT

A port on the River =
Berth Maintenance Dredging!

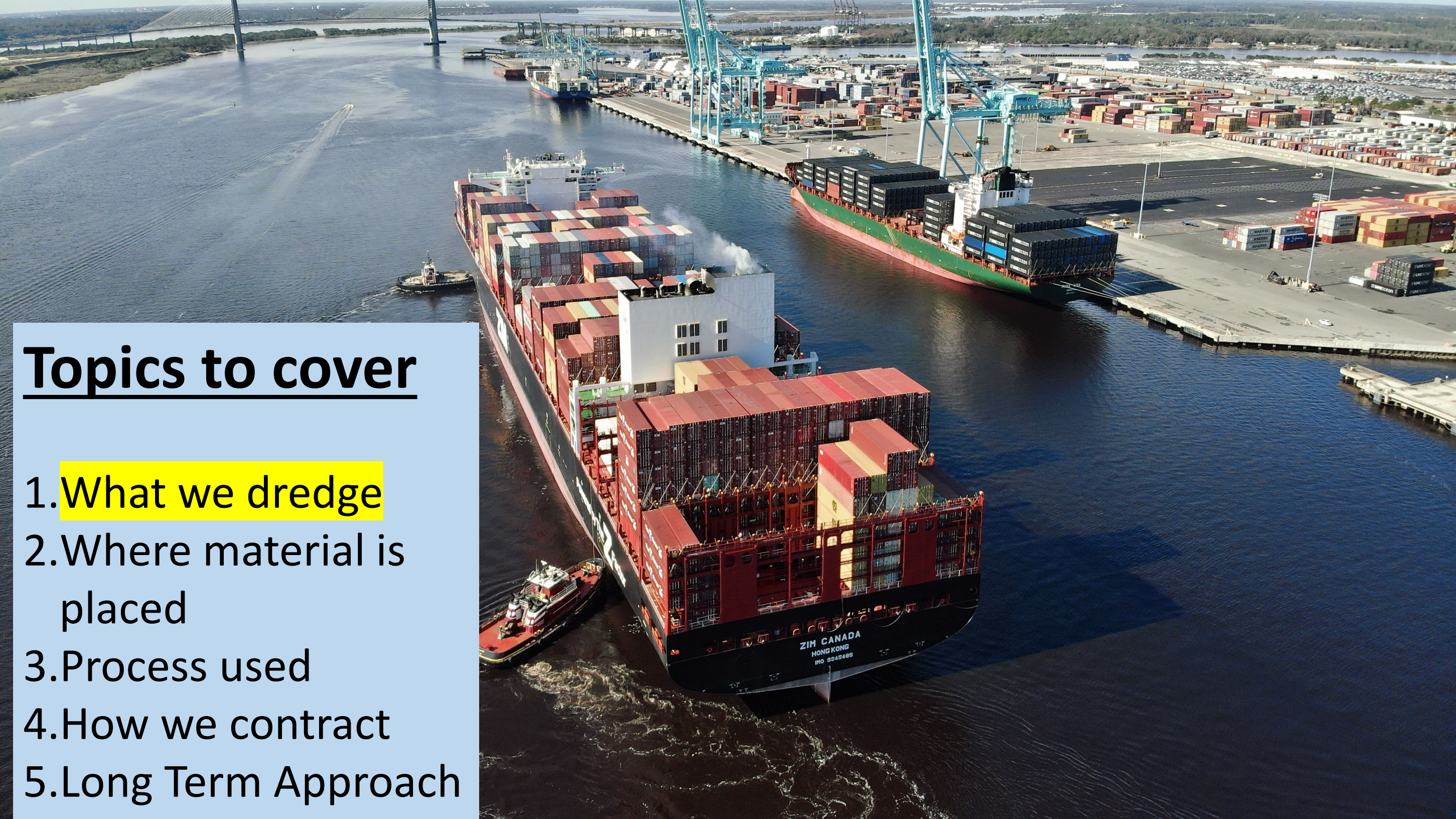






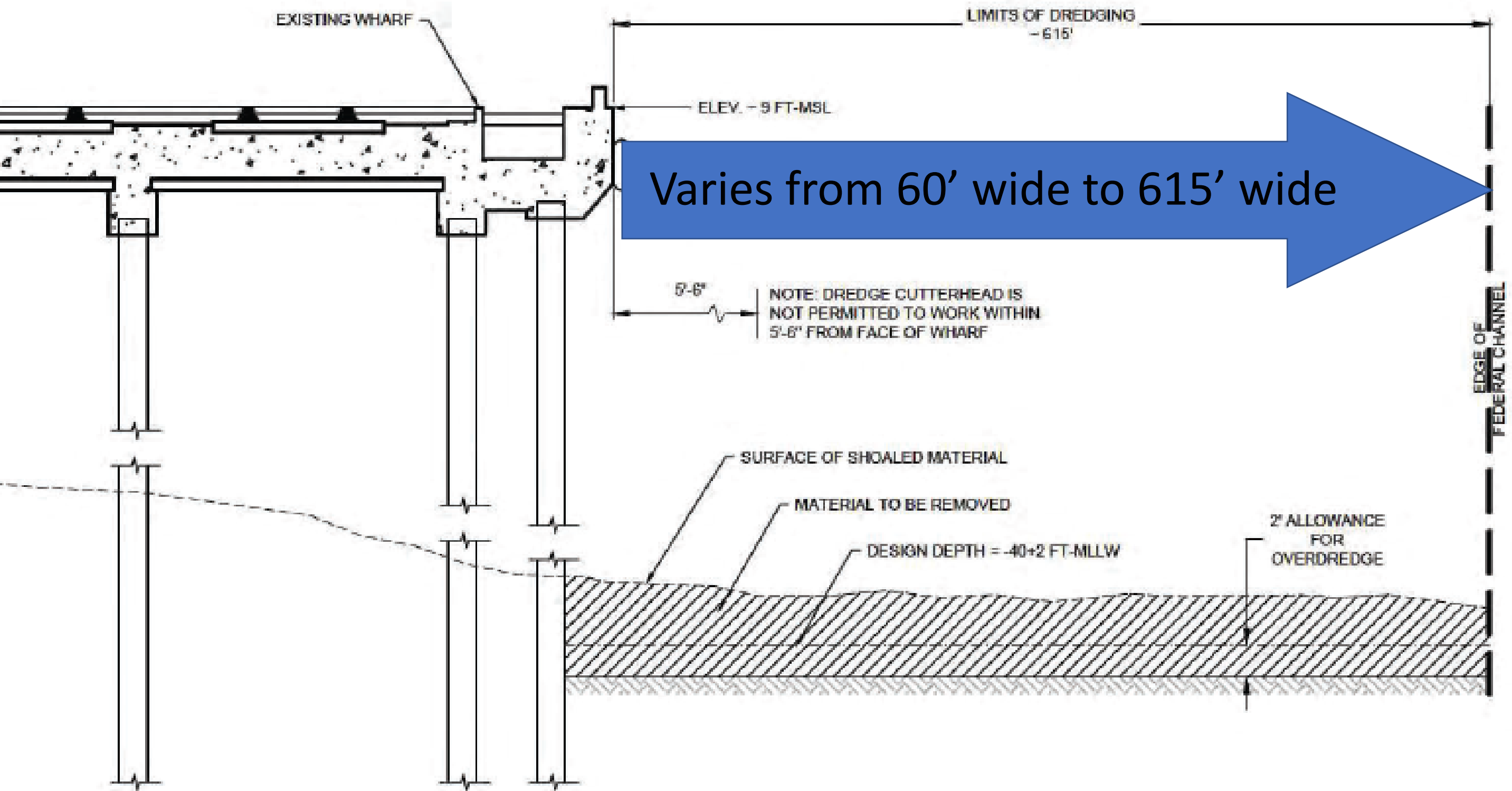
Topics to cover

- 1.What we dredge
- 2.Where material is placed
- 3.Process used
- 4.How we contract
- 5.Long Term Approach



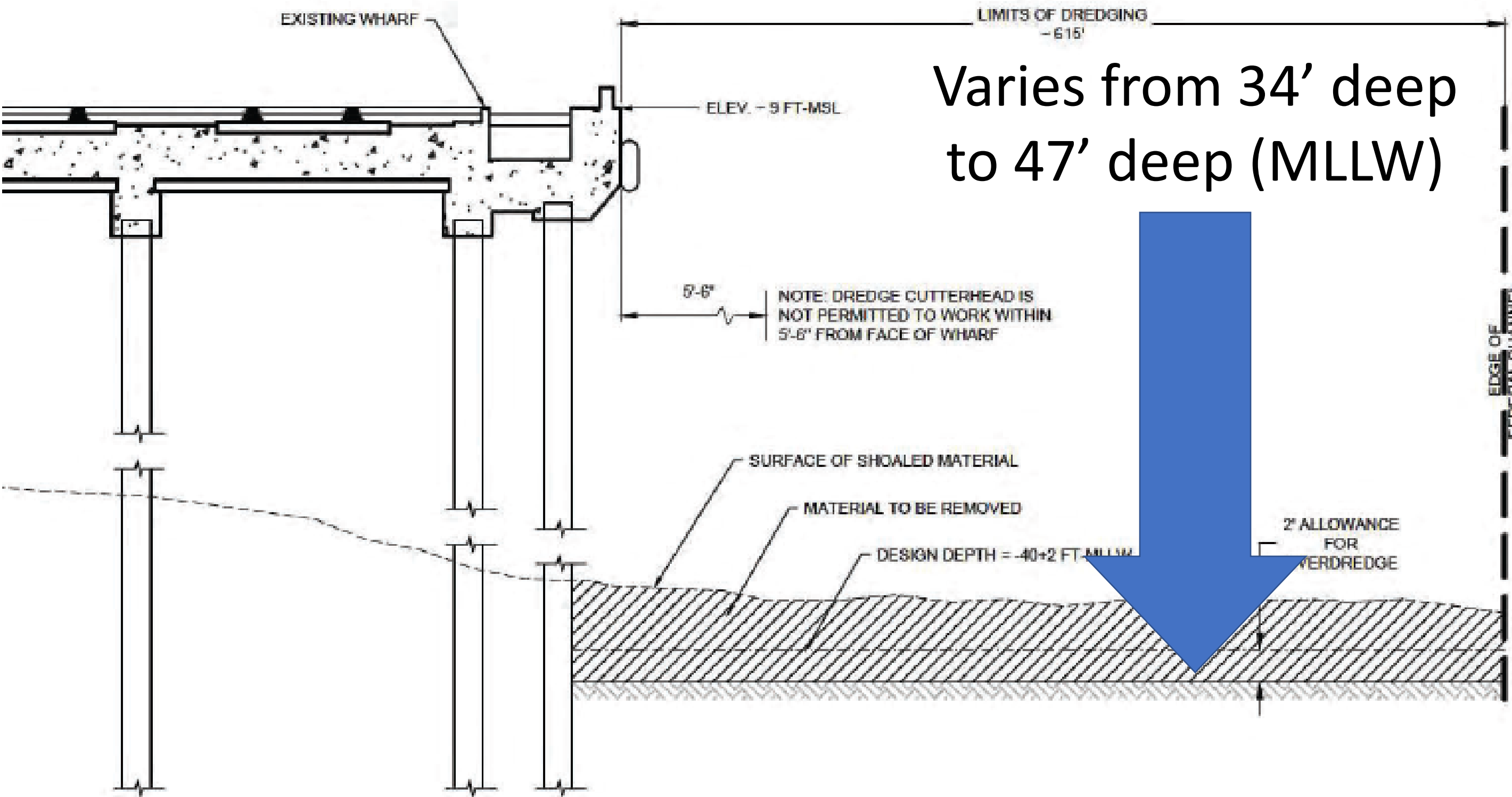
Topics to cover

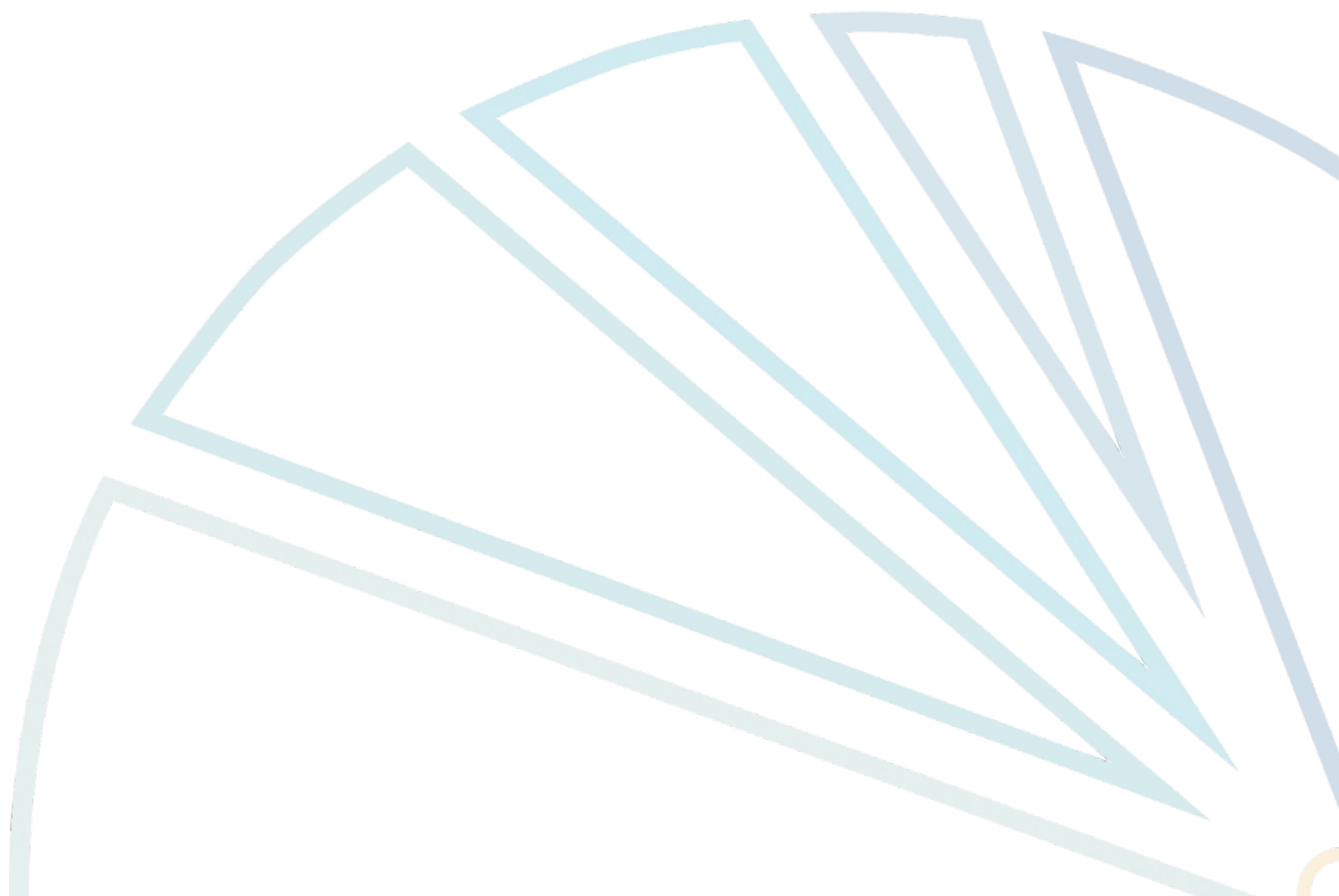
1. What we dredge
2. Where material is placed
3. Process used
4. How we contract
5. Long Term Approach

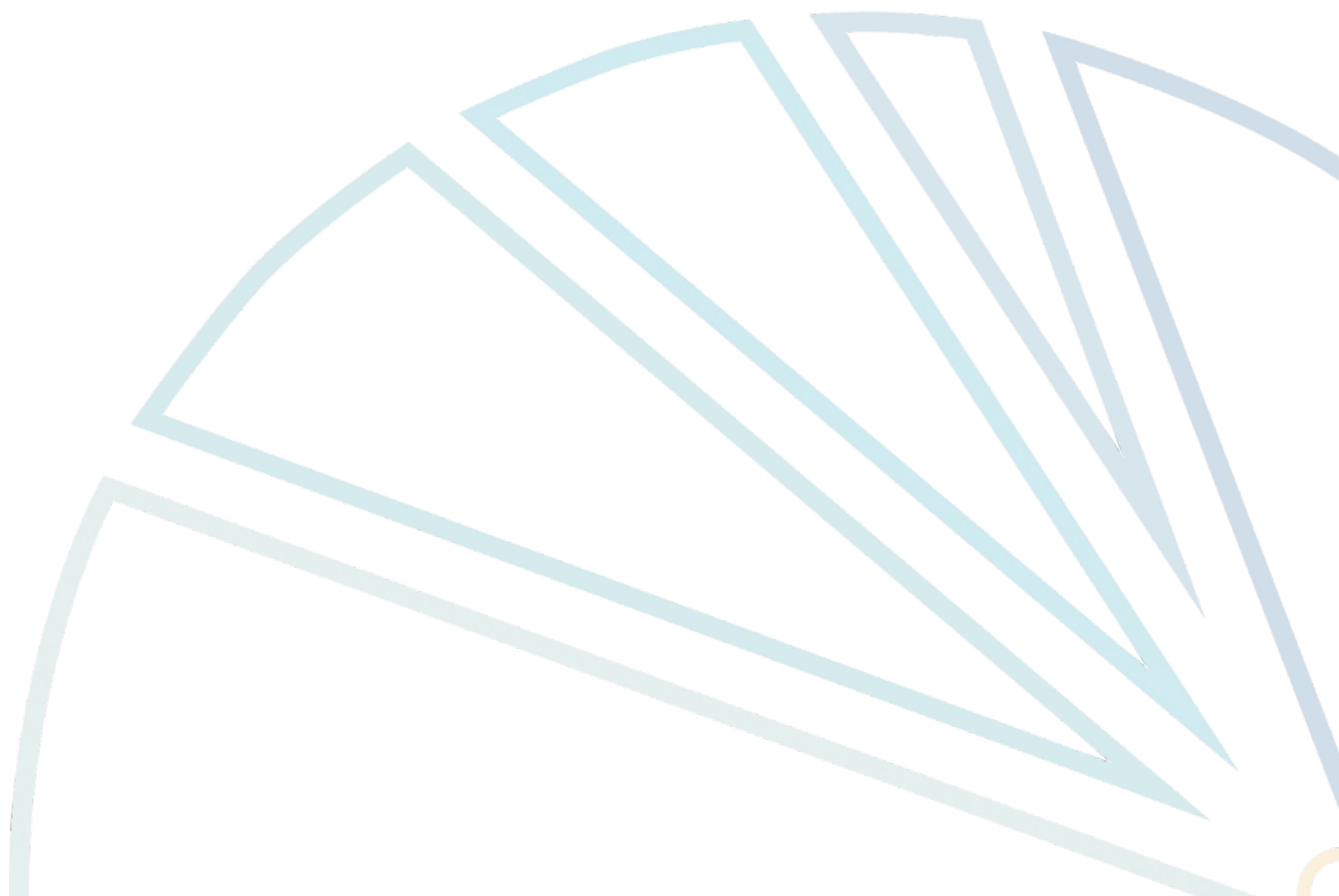


Varies from 60' wide to 615' wide

Federal
Channel

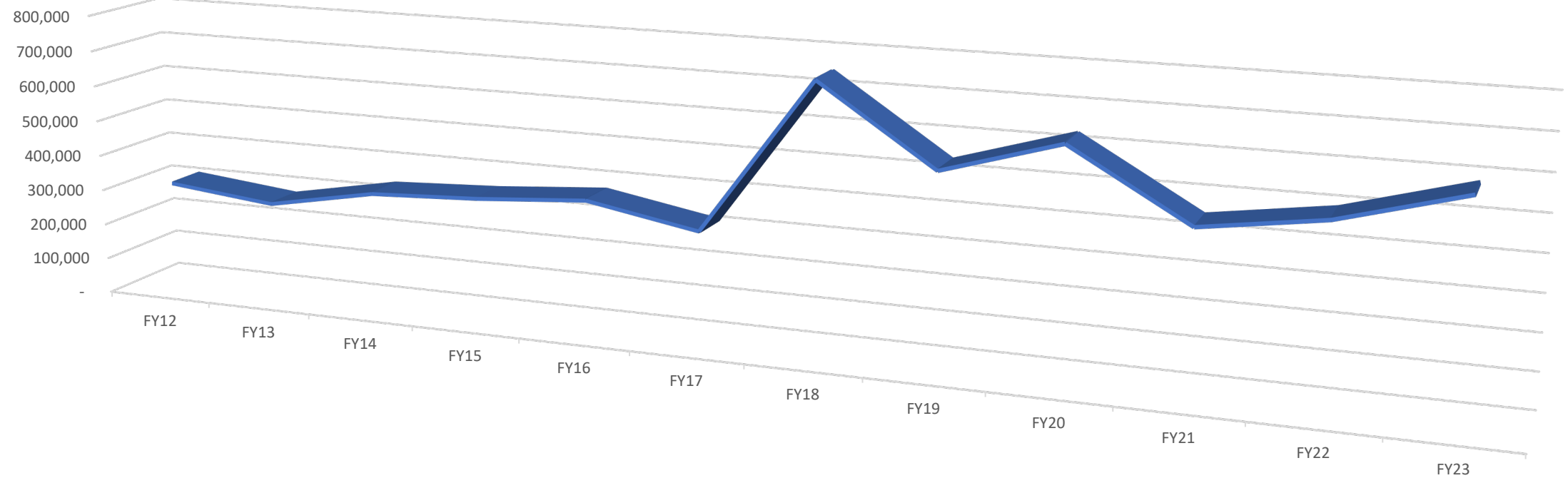


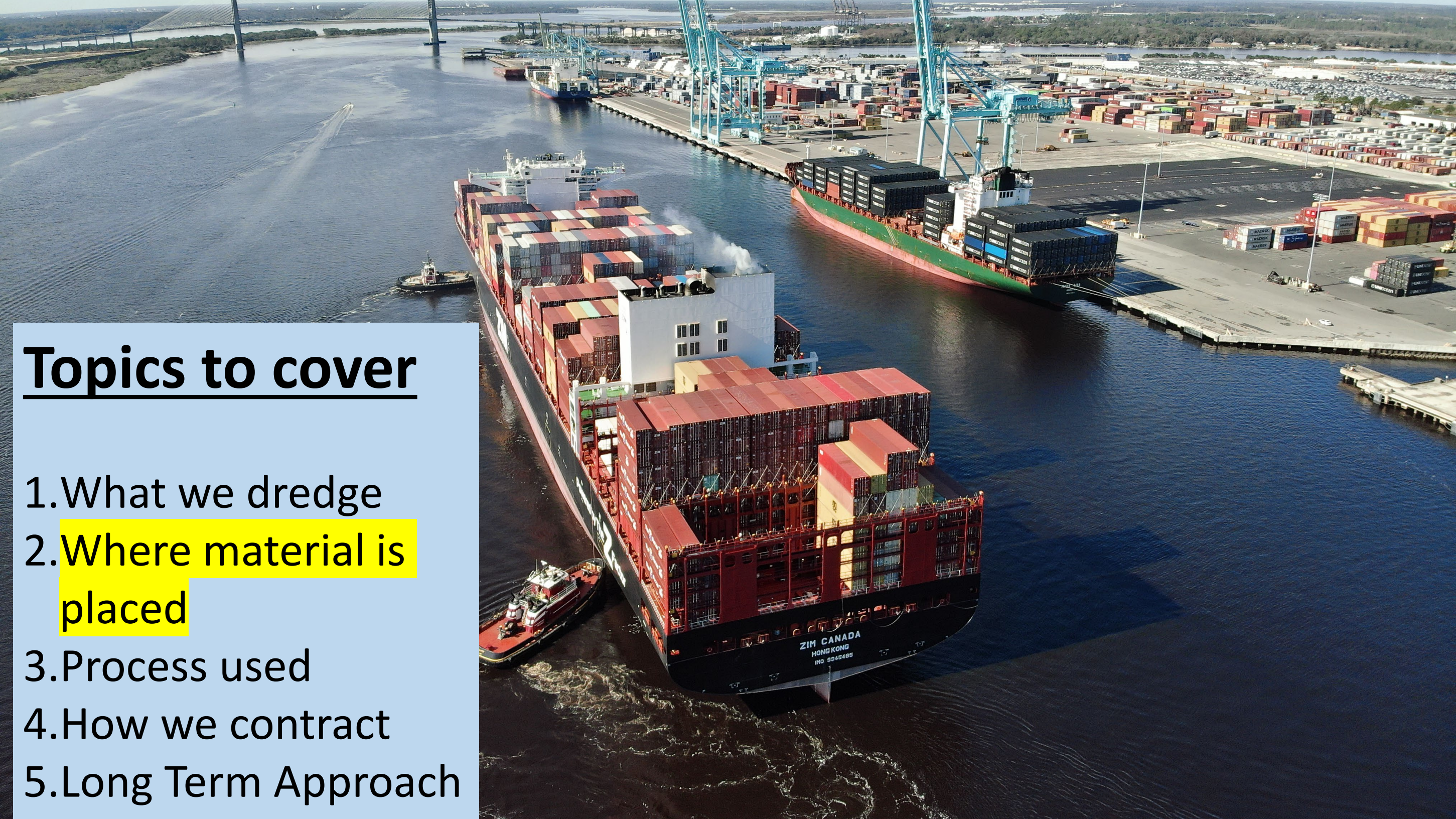




LAST YEAR TOTAL DREDGE = 584,067 CY

12 YEAR HISTORY





Topics to cover

1. What we dredge
2. Where material is placed
3. Process used
4. How we contract
5. Long Term Approach

Where is the dredged material placed?



An aerial photograph of a coastal region, likely in the Southeastern United States, showing a large body of water (Bartram's Bay) and surrounding land. Two areas are highlighted in light green with blue outlines. The larger area on the left is labeled 'Bartram Island DMMA' and is situated in the northern part of the bay. The smaller area on the right is labeled 'Buck Island DMMA' and is located further east, near the mouth of the bay. The surrounding land includes residential areas, industrial zones, and a large airport on the right side.

Bartram Island DMMA

Buck Island DMMA

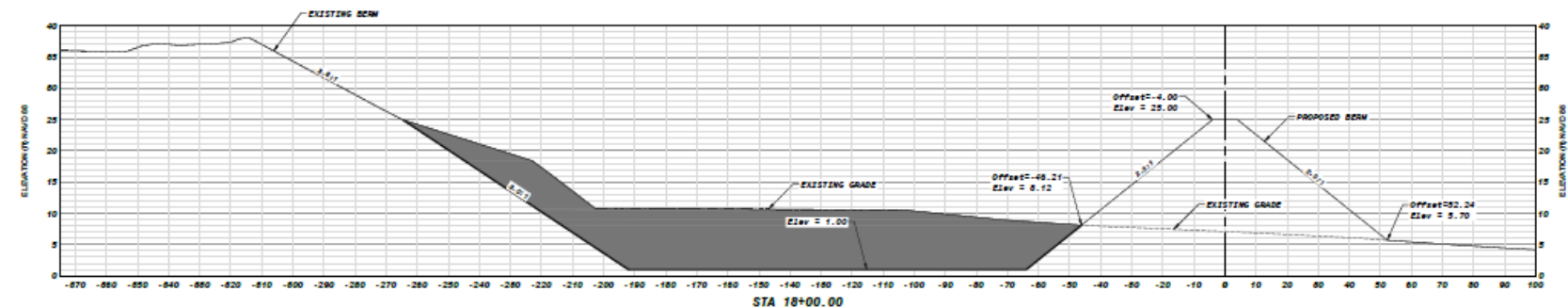
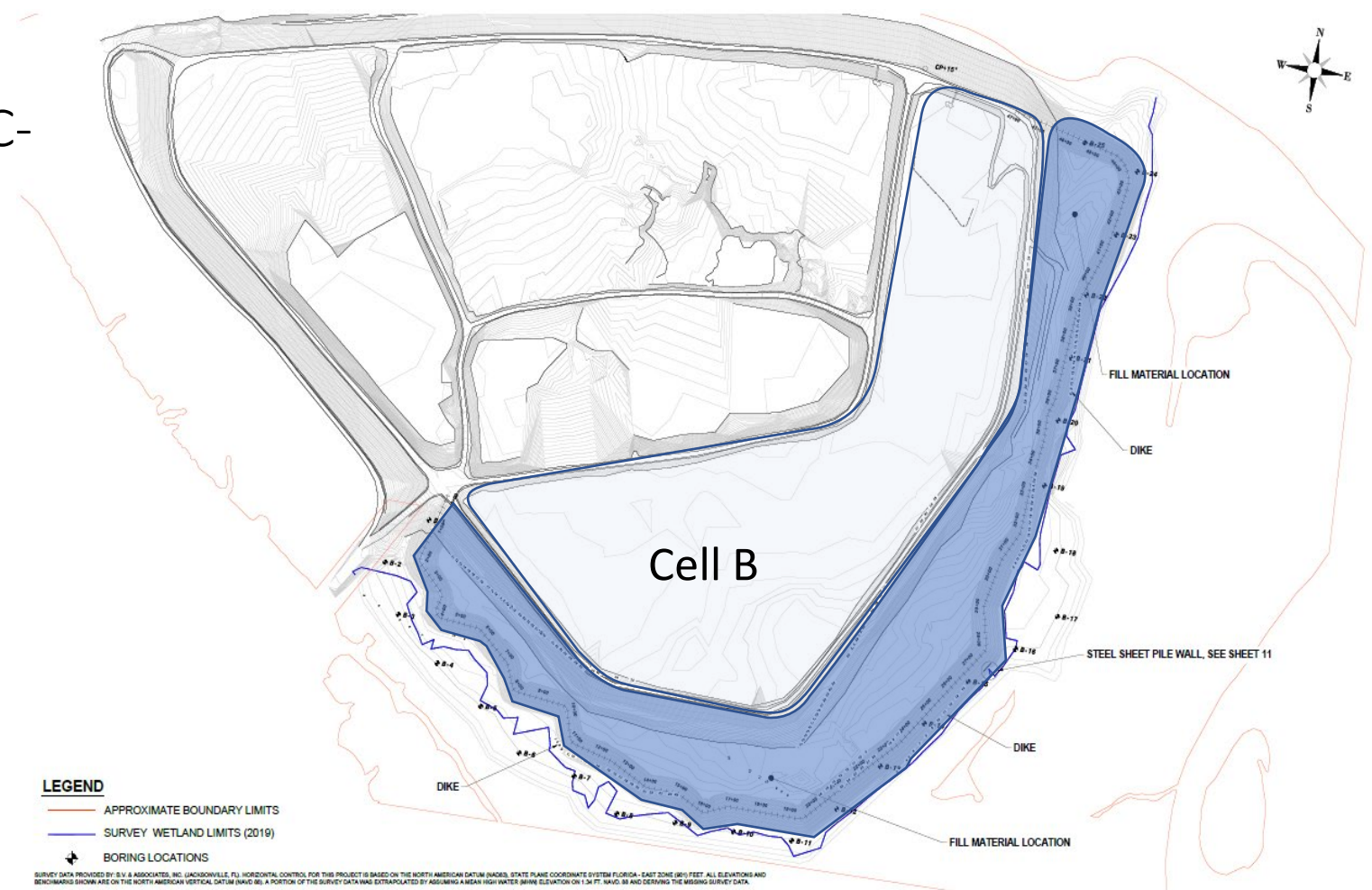
Buck Island DMMA



Upland DMMA Construction Phase 1 – Buck Island

JPA Project No. G2020.02 JPA Contract No. C-1437

- **Background:** On October 5, 2020, the Board approved the issuance of a contract to Brance Diversified, Inc. for the Upland DMMA Construction Phase I at Buck Island.
- Key items of work included the construction of a toe dike on the south and east side of cell B, the transfer of dredge material from the existing cell into the area created by the new toe wall.
- Cost: \$3,987,200
- Contractor mobilized in December
- Construction Underway
- Contract duration 450 days
- Construction to be completed early 2022



Buck Island Cell B



Buck Island Cell B – capacity creation



Buck Island Cell B – capacity creation



Buck Island Cell B – capacity creation



Buck Island Cell B – Temporary cross dike wall to contain material



Buck Island Cell B – capacity creation



Bartram Island DMMA

Bartram Island and Cell “c” expansion

Jpa project no.: g2021-06 jpa contract no.: c-1795

Brance Diversified, Inc.

- **Background:** This project consists of all labor, materials, equipment, and supervision to provide for offloading dredged material management area Cell “C” on Bartram Island and raising the existing earthen dike of Cell “C”. The scope of work includes but not limited to clearing and grubbing, constructing earthen dike containment cells (toe-dike walls) for storing of unsuitable (muck) material, raising the existing dike walls, relocating the un-suitable dredged material, etc
- **Board Approved:** Brance Diversified, Inc. in the amount of \$7,775,000.
- Contractor starting mobilization
- Phase 1 construction began in April/May 2022
- Estimated 2 Year duration



Bartram Island DMMA Cell C



Aerial Views



Aerial Views



Aerial Views



Topics to cover

- 1.What we dredge
- 2.Where material is placed
- 3.Process used
- 4.How we contract
- 5.Long Term Approach



Topics to cover

1. What we dredge
2. Where material is placed
3. **Process used**
4. How we contract
5. Long Term Approach

Process:

1. Pre-Dredge Bathymetric Survey from independent surveyor
2. Dredge by Contractor
3. Post-Dredge Bathymetric Survey from independent surveyor
4. Invoice/Payment based on quantity provided by surveyor from Pre- and Post- Surveys
5. Dredge Contractor provides their own pre- post volumes for comparison



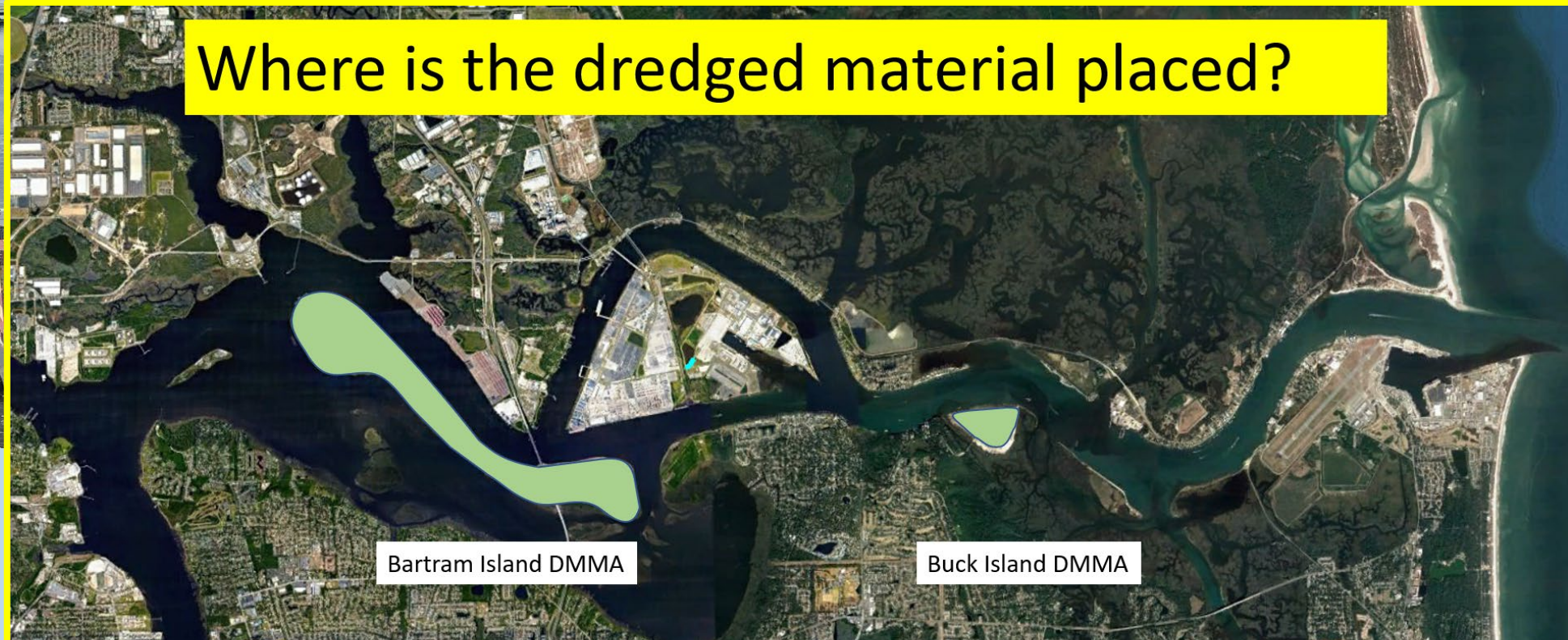
Topics to cover

1. What we dredge
2. Where material is placed
3. Process used
4. How we contract
5. Long Term Approach

ITN Advertised:(Invitation to Negotiate)

1. Advertised ITN and received proposals
2. Evaluated ITN
3. Individual meetings with proposers to better understand their approach, concerns, location of equipment, response times, etc.
4. Received their Best and Final Offer
5. Selected based on what was in the ports best interest

Five-Year Contract with two one-year renewal options. Currently in 5th year of contract



Topics to cover

1. What we dredge
2. Where material is placed
3. Process used
4. How we contract
5. Long Term Approach

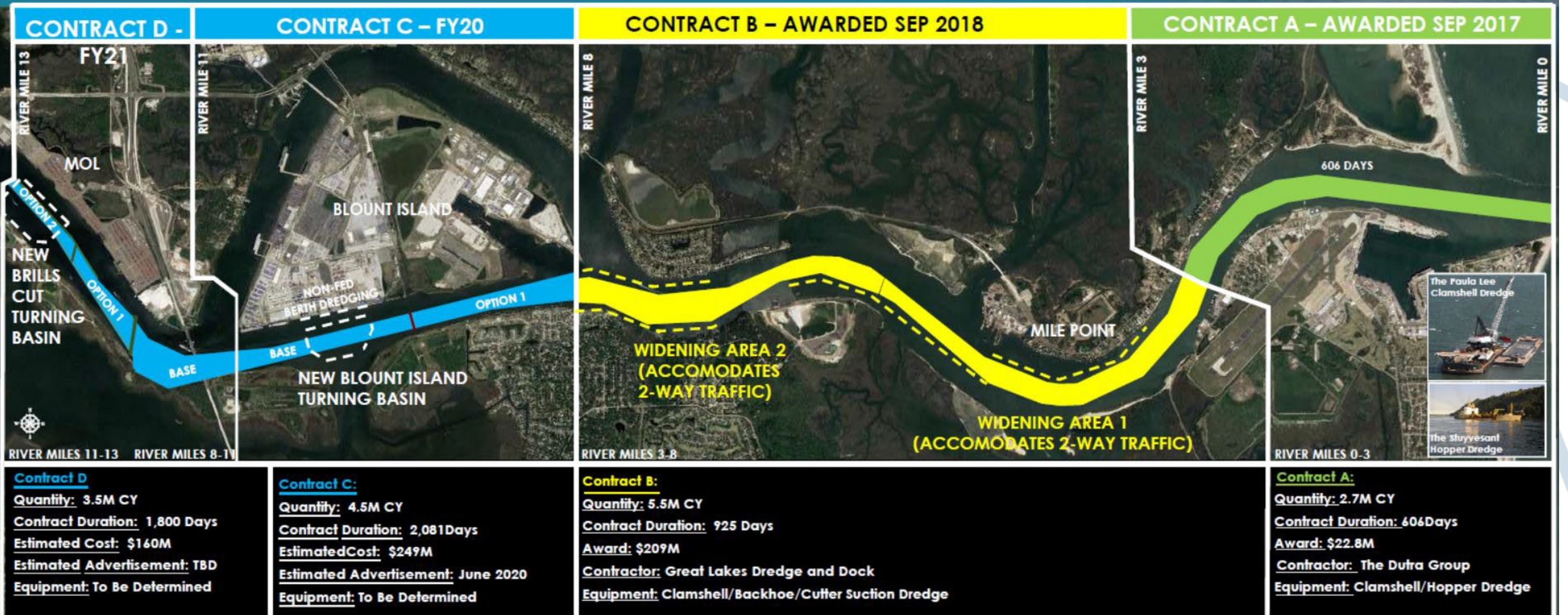
- Limited space to expand DMMAs
- Continue to work existing DMMAs to offload and cap existing cells
- Begin off-shore placement of suitable material

JACKSONVILLE HARBOR DEEPENING



AUTHORIZED PROJECT

- Deepen from the Entrance Channel (River Mile 0) to River Mile 13 from 40 feet to 47 feet
- Widen Areas 1 and 2 ~ 100 to 300 feet
- New Turning Basins:
 - ▶ Blount Island (~2,700 feet long by 1,500 feet wide); Brills Cut (~2,500 feet long by 1,500 feet wide)
- Disposal at Ocean Dredged Material Disposal Site 8 nautical miles southeast of the entrance channel



February 3, 2018



The first clam -
shell scoop!



2:33 p.m. !

DEEPENING COMPLETE

