



Eastern Chapter Meeting

Coastal Resilience,
Dredging Restoration and
Infrastructure Improvements

2023

October 10–12
DoubleTree by Hilton
Jacksonville Riverfront
1201 Riverplace Boulevard
Jacksonville, FL 32207





Event Schedule

Tuesday—October 10

8:00AM–12:00PM	WEDA Dredging 101 Course	St. Johns Room
1:00–5:00PM	WEDA Dredging 201 Course	St. Johns Room
4:00–6:00PM	Early Registration	Foyer CDE
6:00–8:00PM	Icebreaker Reception at DoubleTree Hotel	Pool Deck

Wednesday—October 11

7:30AM–5:00PM	Registration	Foyer CDE
7:30–8:30AM	Breakfast	Foyer B
7:30–8:30AM	Women of WEDA	St. Johns Room
8:30AM–4:20PM	Meetings	Duval Ballroom
8:30–8:40AM	Welcome Walter Dinicola, WEDA Eastern Chapter President	
8:40–8:50AM	WEDA National Update Thomas Cappellino, Executive Director, WEDA	
8:50–9:00AM	1. Welcome to Jacksonville James Bennett, Jacksonville Port Authority	
9:00–9:25AM	2. US Army Corps of Engineers—Jacksonville District Col. James Booth, District Commander Jacksonville District	
9:25–9:50AM	3. Safety—The Integrated Safety Mindset: An Obliquity Strategy Emily Kelahan, Hile Group	
9:50–10:15AM	4. Florida Inland Navigation District Mark Crosley, Executive Director FIND	
10:15–10:45AM	Break	

Wednesday—October 11 *(cont.)*

10:45AM–12:00PM	5. Panel Discussion—Dredging Technology Innovation Moderator: Ram Mohan, Anchor QEA/Texas A&M Ancil Taylor, Dredging Consultant Don Hayes, The Dredging Professor Dave Johanson, Great Lakes Dredge & Dock Dylan Davis, USACE SAD
12:00–1:30PM	LunchFoyer B
12:15–1:15PM	Lunch with the US Army Corps of Engineers St. Johns Room Back by popular demand, this segment was developed for engineers, contractors, agencies, and owners to meet one on one with both North Atlantic and South Atlantic USACE District personal to discuss specific programs, work schedules and bidding opportunities.
1:30–1:55PM	6. USACE—North Atlantic Right Whale Conservation Efforts in the South Atlantic Alan Shirey, US Army Corps of Engineers—Charleston District
1:55–2:20PM	7. Integrating Landscape Architecture and Engineering Concepts to Foster Nature Based Solutions in Dredged Material Management Mindy Strevig, Anchor QEA, LLC
2:20–2:40PM	Break
2:40–3:05PM	8. Sediment Placement Regulations of US Coastal States and Territories: Towards Regional Sediment Management Implementation John Henry, Coastal States Organization
3:05–3:30PM	9. Norfolk Harbor and Channels Deepening—Beneficial Use of Dredged Material for Beach Nourishment Andrew Sinclair, Virginia Port Authority
3:30–3:55PM	10. Navigating Siltation!—Efforts Required By JAXPORT to Keep Berths Open James Bennett, Jacksonville Port Authority
3:55–4:20PM	11. The Indian River Lagoon in Brevard County, Florida Abbey Gering, Brevard County Natural Resources Management Department
4:20PM	Adjourn for the day
6:00–8:00PM	Happy hour event WEDA Environmental Excellence Awards—Highlighting Outstanding Contributions, Museum of Science & History Hors-d’oeuvres and Beverages Speakers: Don Hayes and Craig Vogt

Event Schedule



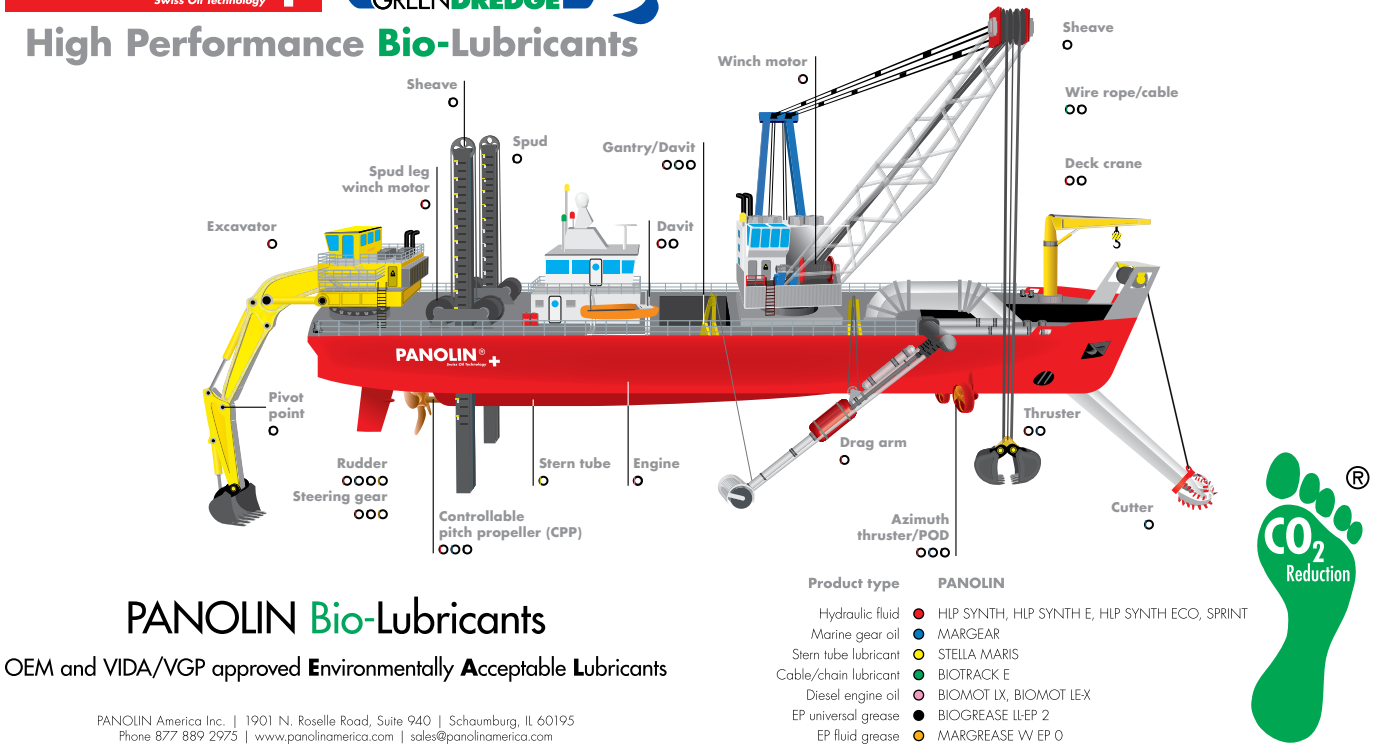
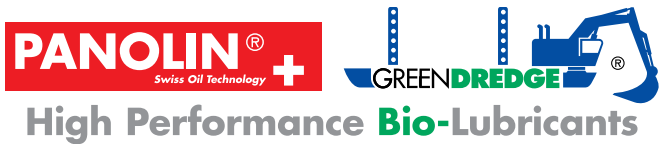
Thursday—October 12

7:30–8:30AM	Breakfast.....Foyer B
8:30AM–12:00PM	MeetingsDuval Ballroom
8:30–8:40AM	Welcome Walter Dinicola, WEDA Eastern Chapter President Welcome to WEDA Election
8:40–9:05am	12. South Boca Beach Re-nourishment with Deerfield and Hillsboro Christina DiFelice, Great Lakes Dredge and Dock
9:05–9:30AM	13. South Ponte Vedra Beach Dune Restoration Project 2021-2022 Construction Riggs Brusnigham, Atkins Coastal Division
9:30–9:55AM	14. Cheers: Multi-Phase Resiliency Dredging Planning Lessons from the Great Lakes Joe Wagner, Black & Veatch
9:55–10:20AM	15. Pigs Eye Islands Andrew A. Timmis, J.F. Brennan Company, Inc.
10:20–10:45AM	Break
10:45–11:10AM	16. Establishing A Mitigation Bank to Compensate for Unavoidable Seagrass Impacts at Ports Don Seaborn and Sandy Walters, RES
11:10–11:35AM	17. Providing a Better Understanding of Sturgeon Behavior Around an Active Cutterhead Dredging in a Riverine Environment Matthew Balazik, USACE Virginia
11:35AM–12:00PM	Closing Remarks Walter Dinicola, WEDA Eastern Chapter President
1:00–5:00PM	ERDC Meeting.....St. Johns Room

Friday—October 13

8:00AM–12:00PM	ERDC Meeting.....St. Johns Room
----------------	---------------------------------

Join us in Baltimore, MD, Maritime Institute of Technology
and Graduate Studies for WEDA 2024!



PANOLIN Bio-Lubricants

OEM and VIDA/VGP approved Environmentally Acceptable Lubricants

PANOLIN America Inc. | 1901 N. Roselle Road, Suite 940 | Schaumburg, IL 60195
Phone 877 889 2975 | www.panolinamerica.com | sales@panolinamerica.com



ENVIRONMENTAL & NAVIGATIONAL DREDGING SERVICES

- » Surgical Hydraulic Dredging
- » Precise Mechanical Dredging
- » Amphibious Dredging
- » Material Transport
- » Separation & Dewatering
- » Hydrographic Surveying
- » Diver Assisted Micro Dredging



Anchor QEA is a
Proud Supporter of the
2023
Eastern Chapter
WEDA Conference

Anchor QEA is an internationally respected environmental and engineering consulting firm that focuses on port, waterfront & maritime facilities, and coastal projects. We work with many of the major U.S. ports to support maintenance and development needs.

www.anchorqea.com
Contact: Walt Dinicola, P.E.
(410) 794-7783

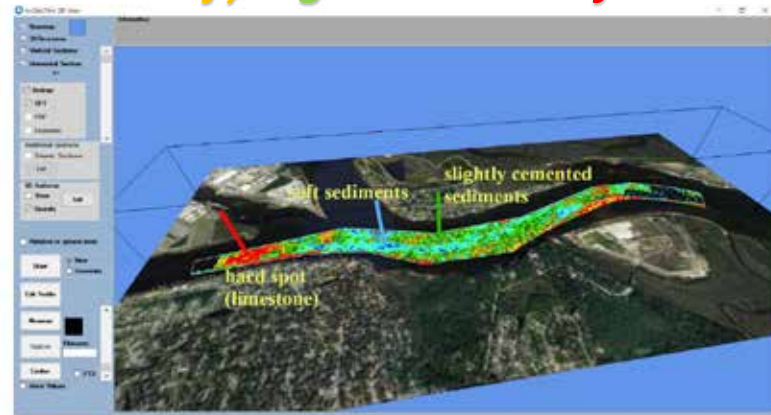


Arc Surveying & Mapping, Inc.
Identifying the Subsurface



DEMCO
Dredging
Exploration
Mining
Consultants

- Perform a geophysical survey prior to a boring campaign
- Select boring locations based on geological structures
- Plan excavation using geophysical results
- Compute material types and increase production



ArcGeoTwin
4D Interactive
Digital Ground
Model
Supporting

- Geology
- Bathymetry
- Borings
- Probes
- Side-scan
- Sub-bottom
- Magnetometer
- Chemical analysis
- Imagery
- Reports

Arc Surveying & Mapping, Inc. – www.arcsurveyors.com – Office (904) 384 8377

A NEW MULTI-FAMILY
ALLIANCE!

DREDGING ENGINEERING,
GEOPHYSICAL AND HYDROGRAPHIC SERVICES

WE'RE BETTER
TOGETHER



WWW.GBA-INC.COM
TAMPA, FLORIDA
(813) 831-4408



WWW.STHE.COM
CHERRY HILL, NEW JERSEY
(856) 342-6600

Geosyntec[®]
consultants

**SUSTAINABLE ENVIRONMENTAL
AND ENGINEERING SOLUTIONS**

for successful delivery of sediments
and waterfront projects.



geosyntec.com



CleanEarth[™]

**HANDLING YOUR DREDGED
MATERIALS IN A WAY THAT
BENEFITS EVERYONE.**

With a longstanding legacy of environmental responsibility and stewardship, we take an efficient approach that benefits your business and the world around us.

Website: <https://www.cleanearthinc.com/>



DREDGING controls & automation

Complete Turnkey Dredge Automation and Controls for new & refurbished projects
Dredge instrumentation packages and upgrades with user friendly interface
Positioning Systems for dredges and marine excavators
Production Systems
Diesel engine communication & local/remote displays imbedded into HMI graphics
Dredge to Shore wireless communication for two direction plant or dredge data and display sharing
Booster Pump automation and remote control from dredge or plant
Remote troubleshooting
Electrical and instrumentation maintenance programs
Real-time and historic Dredge data collection with remote reporting via Internet
User friendly graphical displays to help Operators work effectively
Training Simulators
Power systems and Drives design packages
Versed in all brands of popular PLC and HMI platforms
USACE DQM Program Compliance

kruseintegration.com

K
kruse
integration

Kruse Integration is an elite system integrator with an established, proven plan for turnkey dredge automation. Since 1992, our engineers have lived on dredges while operating, developing and testing PLC code algorithms. We know power systems (electrical, diesel and hydraulic), motor control, PLC controls, wireless technology, information technology, instrumentation, GPS positioning technology and immediate full service support. Don't settle for archaic skills and technology. Kruse will get you and keep you up to date. We live and breathe this stuff.



Hyatt SURVEY
Geographic Data Specialists

Woman Owned Small Business

Hyatt-Survey.com
941.748.4693

20th Anniversary



Building the nation's **waterways** and **marine infrastructure** since 1905.



A dependable and experienced partner in marine construction and dredging for more than 115 years.

OFFERING A WIDE RANGE OF DREDGING SERVICES

CLAMSHELL DREDGING | CUTTER SUCTION DREDGING | HOPPER DREDGING



WWW.MANSONCONSTRUCTION.COM

Dredging & Dewatering Services

- Hydraulic Dredging and Cleaning of Marine Channels, Lakes, and Lagoons
- Sludge/Residuals Processing and Dewatering
- Mobile Dewatering Equipment Rental and Operation
- Sediment Excavation and Solidification



Over 50 Years in Business
Trained and Certified Operators and Technicians
Emergency Services Available



MOBILE DREDGING & VIDEO PIPE

A Carylton Company

The Environmental Protection Specialists

3100 Bethel Road • Chester, PA 19013
1566 Harding Highway • Newfield, NJ 08344 11420 Old
Baltimore Pike • Beltsville, MD 20705



Visit Our Website www.mdvpinc.com
Or Call 1-800-635-9689

CASHMAN DREDGING



REVITALIZING WATERWAYS & PORTS

WWW.CASHMANDREDGING.COM | 617.890.0600

PROVIDING REMEDIAL CONSTRUCTION & ENVIRONMENTAL DREDGING SERVICES NATIONWIDE.



LEARN MORE ONLINE

SEVENSON.COM

**Sevenson
Environmental
Services, Inc.**

Niagara Falls, USA | Established 1917

TECHNOGENIA
LaserCarb® Oklahoma, Inc.



WHY LaserCarb®

Numerous industries use tools that require high resistance to abrasion and erosion. The LaserCarb® is a hard surfacing process that adds an anti-abrasion material to the wear parts. The LaserCarb® process resolves numerous problems caused by welding.



PRINCIPLE

The process consists of using the energy of a Laser beam to melt the deposition powder (Ni-Cr or other material) on the part. A weld occurs between the deposit and the base metal.

BENEFITS

The hardness and toughness of Spherotene® (cast tungsten carbide spheres produced by Technogenia) united with the unique properties of a high energy laser produces a weld deposit. The cast spheres exhibit hardness of 3000 + 500 HV, they pack close together to produce a dense deposit. The spherical shape also increases toughness in the carbide grain and the overall deposit.

Use of powders based on cast spherical Tungsten Carbide Spherotene®

- High hardness: 3000 HV ± 500 • Spherotene® is not affected by LaserCarb®
- Low heat affected zone (0.030") • Almost total absence of porosity
- Large range of thickness deposit • Metallurgical bond

APPLICATIONS:

Mining, Geodrilling, Tunneling, Dredging, Mixing Equipment, Industrial, Oil & Gas, Construction.



+1(405)470 33 50 www.technogeniaUSA.com



WEDA

EA IS ACTIVELY INVOLVED IN THE ACTIVITIES AND INITIATIVES OF THE WESTERN DREDGING ASSOCIATION (WEDA) AND THE USEPA/USACE NATIONAL DREDGING TEAM.

COMPREHENSIVE SEDIMENT MANAGEMENT SERVICES

- Dredged Material Management Planning
- Beneficial Use and Innovative Technologies
- Sediment Sampling and Analysis
- Sediment Remediation
- Dredging, DMCF, and Remedial Design
- Marine Protection, Research, and Sanctuaries Act (MPRSA) Section 103 Evaluations
- In-House Ecotoxicological and Biological Testing Laboratories
- Thin-Layer Placement
- Bathymetry Surveys
- Ecological and Human Health Risk Assessment
- Habitat Restoration
- Construction Oversight



Contact Us



Peggy Derrick
Vice President
p: 410-329-5126
e: pderrick@eaest.com



Kevin Kowalk
Sediment Practice Deputy Director
p: 734-369-3410
e: kkowalk@eaest.com

OFFICES NATIONWIDE
www.eaest.com



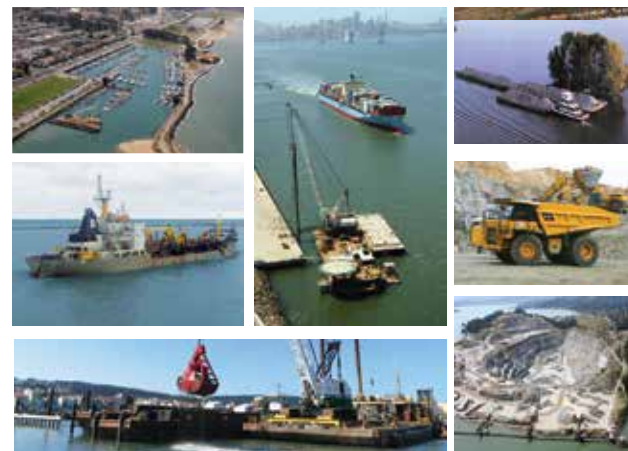
Weeks Marine
welcomes you to
Jacksonsonville for the 2023
WEDA Eastern Chapter
Annual Meeting

www.weeksmarine.com



Capacity. Capability. Character.

Industry Leader in Aggregates, Dredging
and Marine Construction Services



Call 415-258-6876 or visit our
website at www.dutragroup.com



Ryzhka International LLC is a HUBZone and Service Disabled Veteran Owned Small Business (SDVOSB) providing bulk and packaged lubricants and fuel oils to Maritime, Commercial, Industrial, Government and Military customers.

Ryzhka International LLC
3403 NW 9th Ave, Suite 802
Fort Lauderdale, FL 33309
954-366-9199
www.ryzhka.com

IT ALL STARTS WITH DREDGING™

ECONOMIC RECOVERY | COASTAL PROTECTION | ENVIRONMENTAL RESTORATION



GREAT LAKES DREDGE & DOCK COMPANY, LLC

9811 Katy Freeway, Suite 1200, Houston, TX 77024 | 346.359.1010 | info@gldd.com | gldd.com
COMMITTED TO CREATING AN INCIDENT- AND INJURY-FREE (IIF) WORK ENVIRONMENT



BOARD MEMBERS

President
Walter Dinicola
Anchor QEA

Vice President
Alexandra Schafer
US Army Corps of
Engineers

Treasurer
Steve Miller
Ellicott Dredge

Secretary
Steve Simpson
Mobile Dredging &
Pumping Company

Program Manager
Armand Riehl
Great Lakes Dredge &
Dock Company

Past President
David Johanson
Great Lakes Dredge &
Dock Company

Industry Liaison
Andrew Timmis
J.F. Brennan Company, Inc.

Durable, Reliable, and Versatile Dredges



A World Leader of Portable Cutter Suction Dredges

Our dredges are used for:

- Sand and Gravel Dredging
- Land Reclamation Projects
- Coastal Restoration
- Dredging Ports & Harbors
- Dams and Desiltation



dredge.com

sales@dredge.com +1 410-545-0232



THANK YOU SPONSORS



THANK YOU SPONSORS





**THANK YOU
SPONSORS**

P
R
E
M
I
E
R



Marine Professionals Since 1919

BRENNAN

**CASHMAN
DREDGING**



**MOBILE DREDGING
& VIDEO PIPE**

A Carylton Company

PANOLIN[®] **+**
Swiss Oil Technology