

VOLUMETRIC LOAD SCANNING

WALZ SCALE
ISO CERTIFIED



Executive Summary

- * Our company was founded by Fred Walz in 1965 with the goal of providing new weighing technologies to our customers to improve business processes and increase our customers overall productivity
- * Global leader in the arena of measurement and production monitoring technologies
- * Walz Scale is uniquely positioned to bring together weighing technology along with volumetric measurement solutions
- * Walz provides over 100 service locations throughout North America and numerous partners globally

What is Volumetric Load Scanning?

The Walz Payload Scanner is a non-contact measurement instrument used to measure the volumetric loads in open top vehicles.

The WLS System incorporates eye safe laser scanners and Patent Pending Algorithms to determine the actual amount of material carried in vehicles.



System Components

- Eye safe laser scanner(s)
- Power supply and ethernet switch
- Mounting hardware for the laser scanners
- RFID Reader and RFID truck tags
- Traffic light for communication with drivers
- Windows based tablet / kiosk / laptop / PC



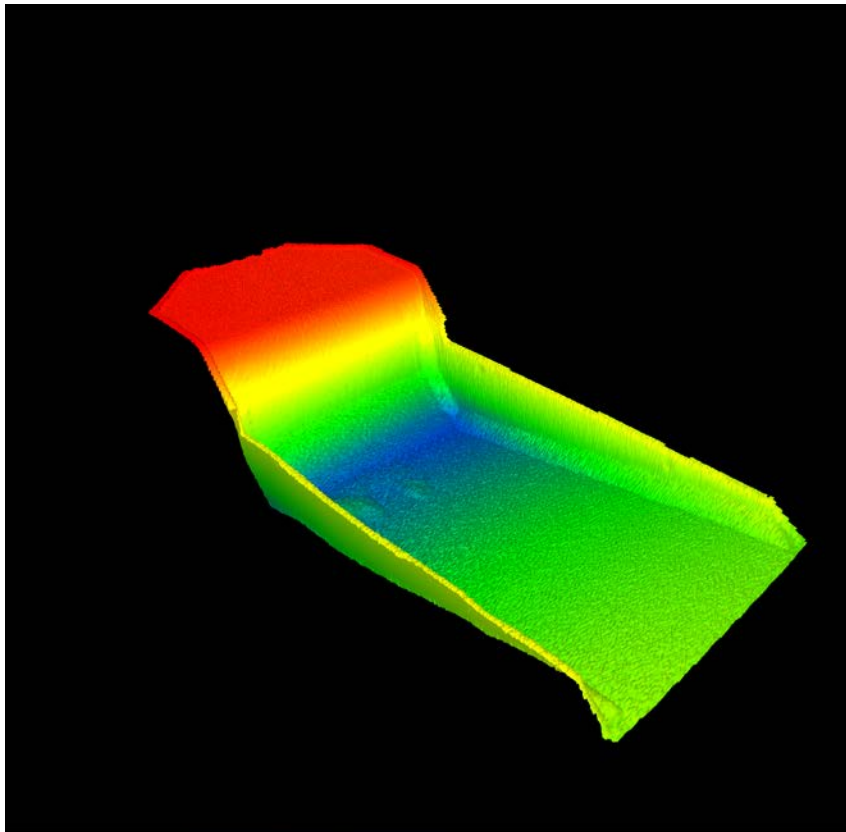
System Operation

1. Vehicles are typically fitted with an RFID tag, which is used to automatically identify the vehicle from within the database.
2. Trucks are initially scanned empty and this empty scan profile is stored within the system.
3. Loaded trucks are then scanned and their loaded scan profiles are compared against their stored empty scan.
4. The system will then automatically generate the carried volume within the loaded vehicle.

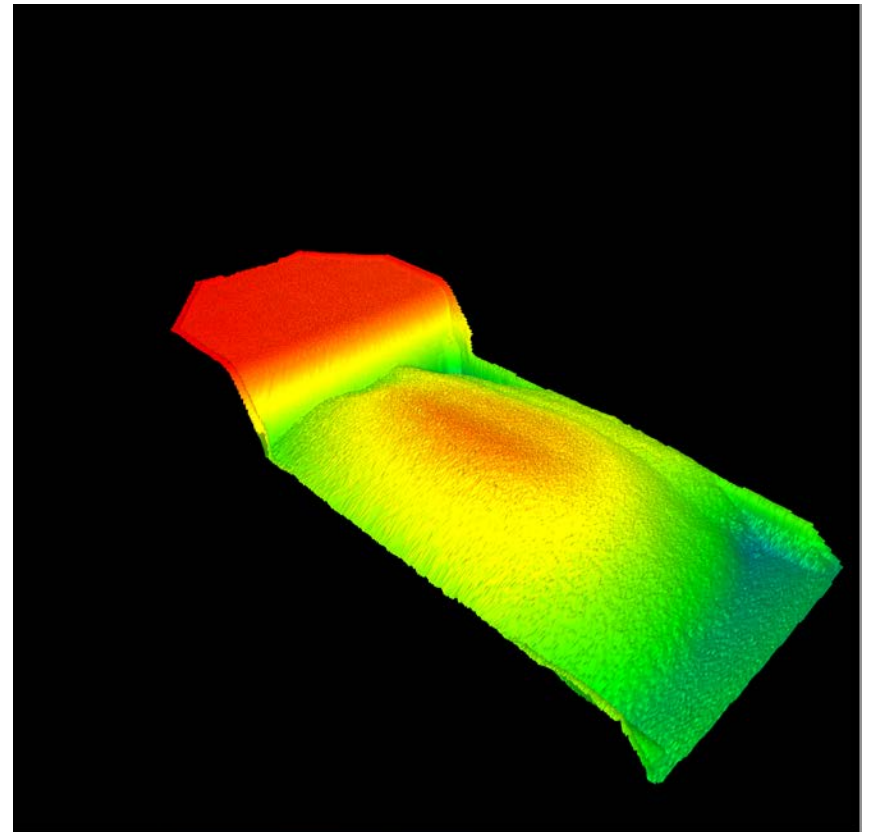


Accurate Carried Volume

Empty Profile

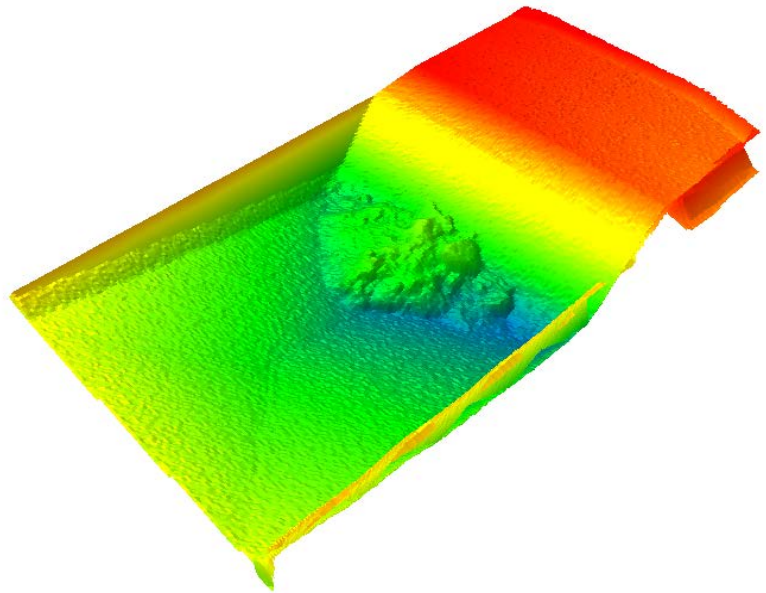


Loaded Profile



Cary Back Monitoring

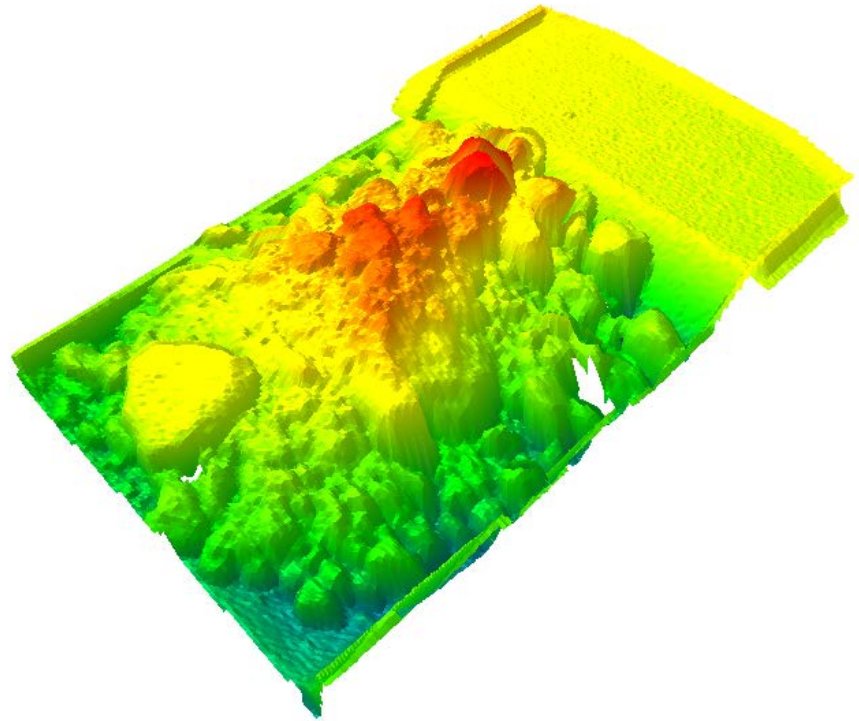
Alert drivers to carry back or automatically adjust production based on actual empty bed capacity.



Production Monitoring

Monitor actual carried volume on every haulage asset, without the need to stop the vehicle

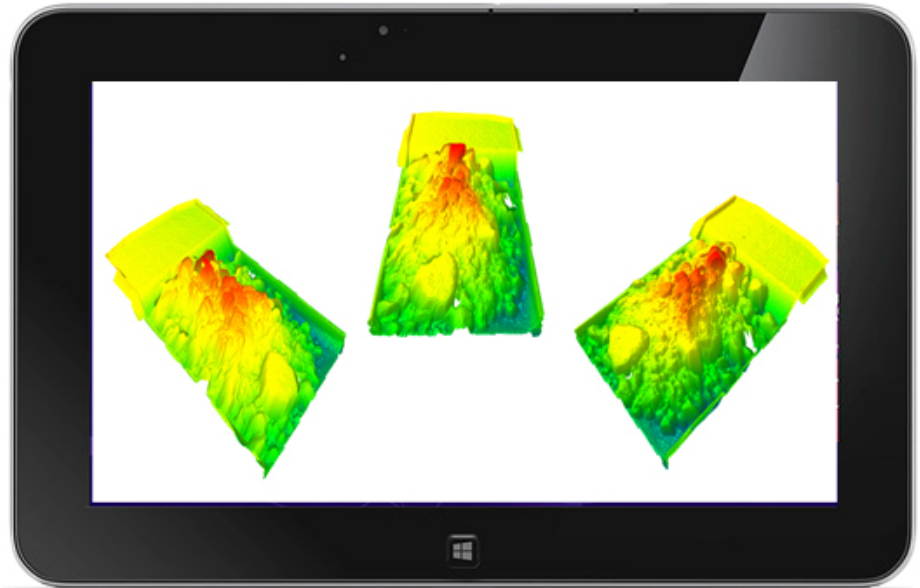
The real time load scanning technology will provide accurate carried values for every load.



Portable Operation



Tablet Interface



Built In Reporting

- Production Reports
- Live Stockpile Levels
- Materials Reports
- Individual Job Reports
- Truck Reports
- Truck Cycle Time Reports



Managing the data?

All of the scan data is stored locally at the scanner allowing for real-time data management.

Optional web based cloud data services are also available. Providing real time access to the data from any location with an internet connection.



Questions

- Quick Company Facts
 - Walz Scale
 - 656 High Point Lane
 - East Peoria, IL 61611
 - T: (309) 694-3200
 - F: (309) 694-3285
 - Web Address: www.walzscale.com
 - E-mail: mwalz@walzscale.com (Matt Walz, VP)