

GEORGIA PORTS AUTHORITY

The Southeast Gateway for the U.S.



CREATING OPPORTUNITIES THROUGHOUT GEORGIA

MISSION STATEMENT

Develop, maintain and operate ocean and inland river ports within Georgia; foster international trade and new industry for state and local communities; promote Georgia's agricultural, industrial and natural resources; and maintain the natural quality of the environment.



GPA: AN ECONOMIC ENGINE

STATE OF GEORGIA:

- **+352,000** full- and part-time jobs
- **\$67** billion in sales (9.5% total sales)
- **\$32** billion in state GDP (8% total GDP)
- **\$19** billion in income (5% of total personal income)

NATIONWIDE:

- **\$5** billion in federal taxes
- **9%** of U.S. containerized trade**
- **13%** of U.S. containerized exports**

Source: *Terry College of Business, University of Georgia (FY2011) **U.S. Department of Commerce – based on tonnage (FY2011)



FY 2014:

29.4 million tons +8.0%

3.1 million TEUs +6.3%

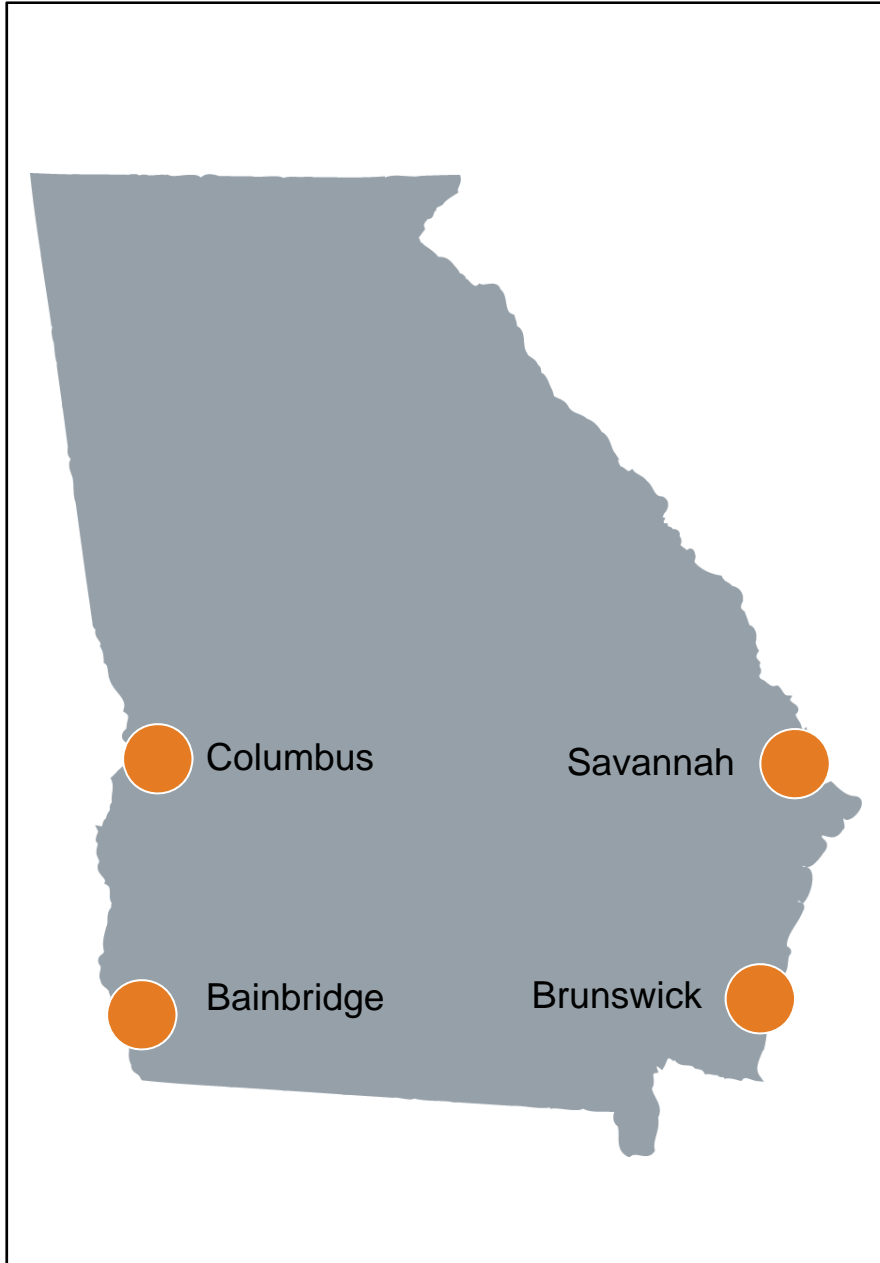
700,702 Autos/Machinery +10.0%

332,989 Intermodal containers +5.8%

2.7 million tons bulk +8.4%



PORTS ACROSS GEORGIA



Savannah

Garden City Terminal
Ocean Terminal

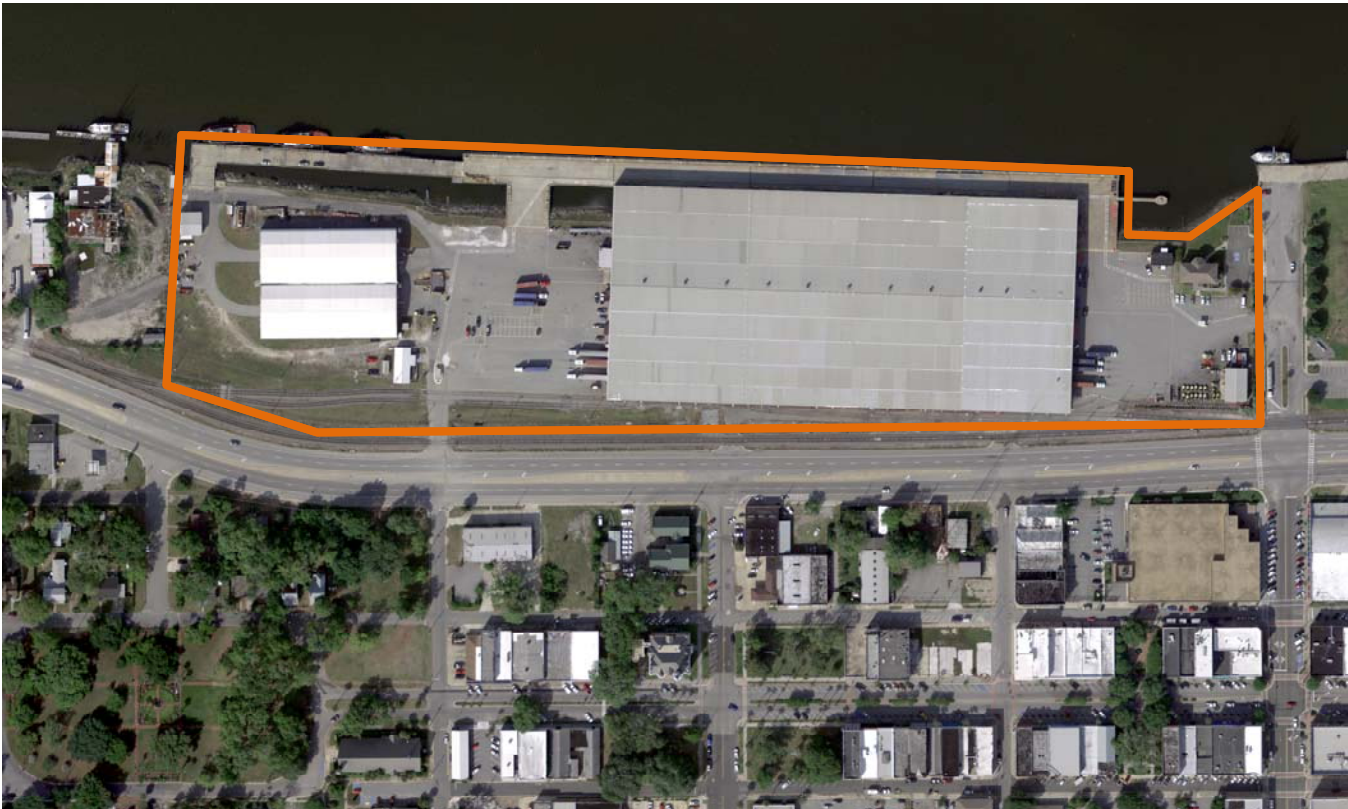
Brunswick

Mayor's Point Terminal
Colonel's Island Terminal
East River Terminal/
Lanier Docks

Bainbridge
Columbus



PORT OF BRUNSWICK



- Dedicated breakbulk facility - forest product exports
- Terminal area:
22 acres (8.9 ha)
- Berthing: 1,750 ft
(1,533 m)
- Covered storage :
355,000 ft² (32,980 m²)
- Dual rail access

MAYOR'S POINT TERMINAL



- Owned by GPA, leased to Logistec
- Dedicated bulk facility
- Terminal area: 72 acres (29 ha)
- Berthing: 1,600 ft (488 m)
- Covered storage : 428,500 ft² (39,809 m²)
- Dual rail access

EAST RIVER TERMINAL/LANIER DOCK



- Dedicated RoRo and agribulk facility
- Terminal area:
1,700+ acres (688 ha)
- Berthing: 3 berths totaling
3,355 ft (1,022.6 m)
- Auto processors:
422 acres (171 ha)
- New and used autos
- Heavy machinery
- Dual rail access

COLONEL'S ISLAND TERMINAL



TOTAL RO/RO TONNAGE YTD MAY 2014

1. Baltimore
- 2. Brunswick**
3. Jacksonville
4. Newark
5. Los Angeles

Source: US Department of Commerce



BRUNSWICK HARBOR MAINTENANCE



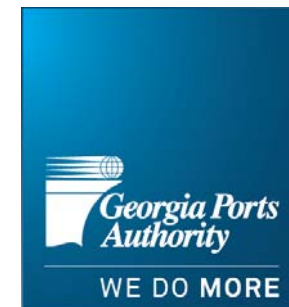
CURRENT STATUS

Administration's FY15 budget included \$3.9M for Brunswick maintenance. House Approps passed at the same level, which is down from \$5.3M in FY14.

GPA has submitted a tentative request for \$3M in contributed funds for FY15



PORT OF SAVANNAH



OCEAN TERMINAL

- Breakbulk, RoRo, heavy-lift, project cargo, and container facility
- Terminal area: 200.4 acres (81 ha)
- Berthing: 5 berths totaling 3,599 ft (1,097 m)
- Covered Storage: 1,427,245 ft² (132,596 m²)
- Dual rail access



- Dedicated container facility
- Terminal area:
1,200 acres (485.6 ha)
- Berthing: 9 berths
totaling a contiguous
9,693 ft (2,955m)
- Covered storage:
1,192,166 ft²
(110,756 m²)
- 25 container cranes
- 116 rubber-tired gantry
cranes
- 2 on-terminal rail

GARDEN CITY TERMINAL



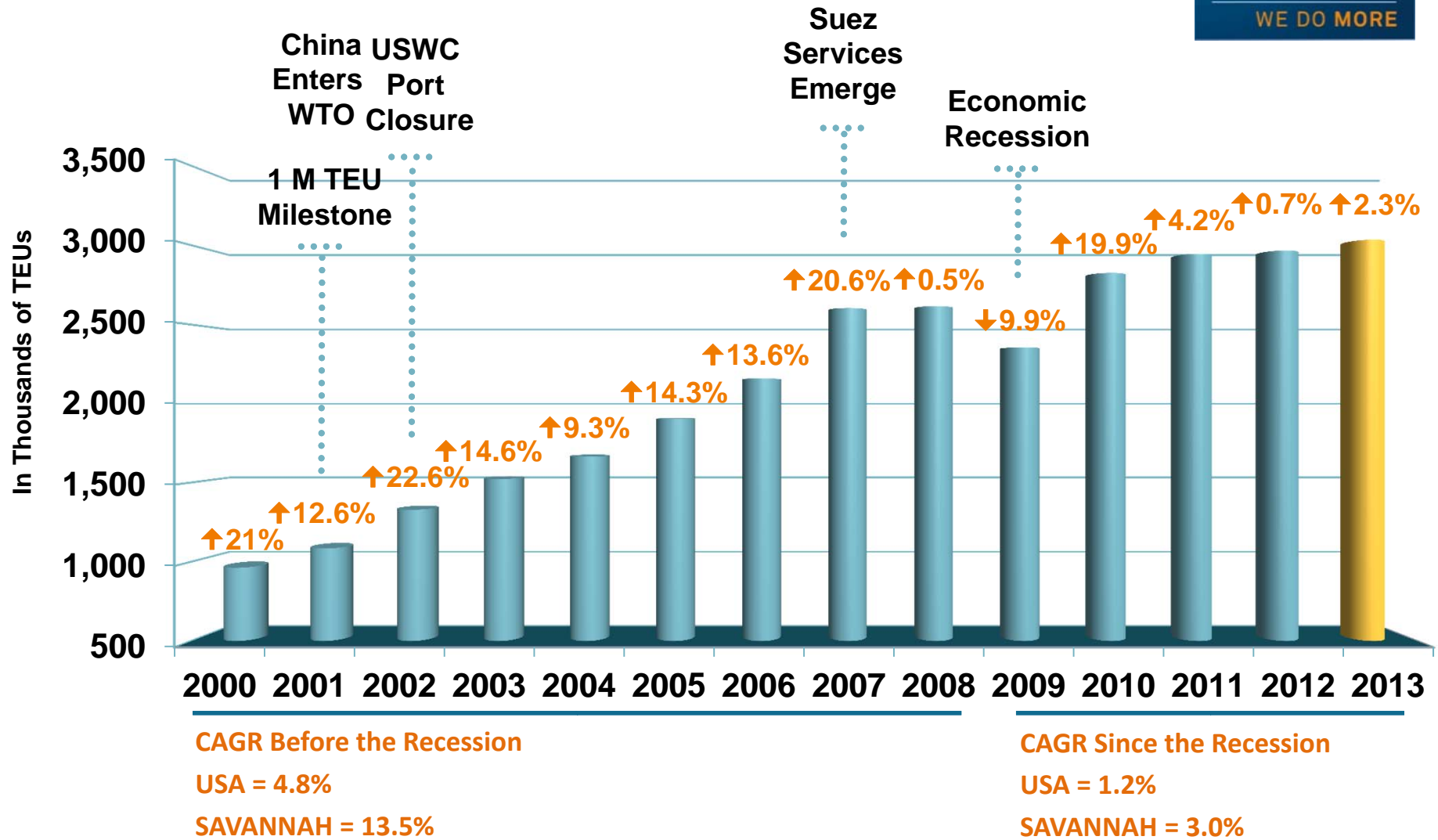
GARDEN CITY TERMINAL TOMORROW

33 Container Cranes
169 Rubber-Tired Gantries
Terminal Area: 1,200 acres (485.6 ha)



PORT OF SAVANNAH (GCT) THROUGHPUT

14-year Calendar Year History



Source: GPA Marketing (loads & empties)

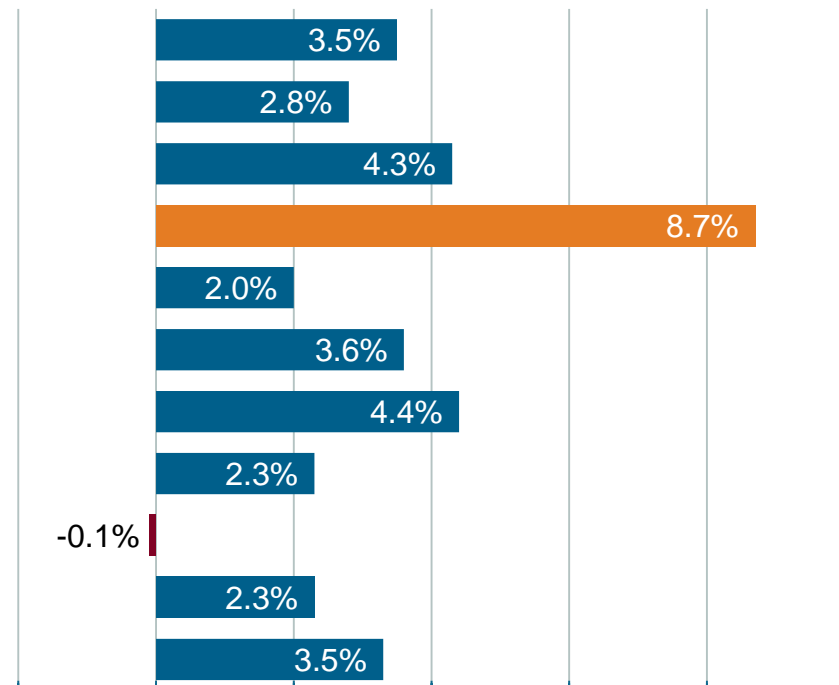
SAVANNAH:

DELIVERING SUCCESS TO OUR CUSTOMERS



- Fourth Busiest Port in the U.S.
- Fastest Growing

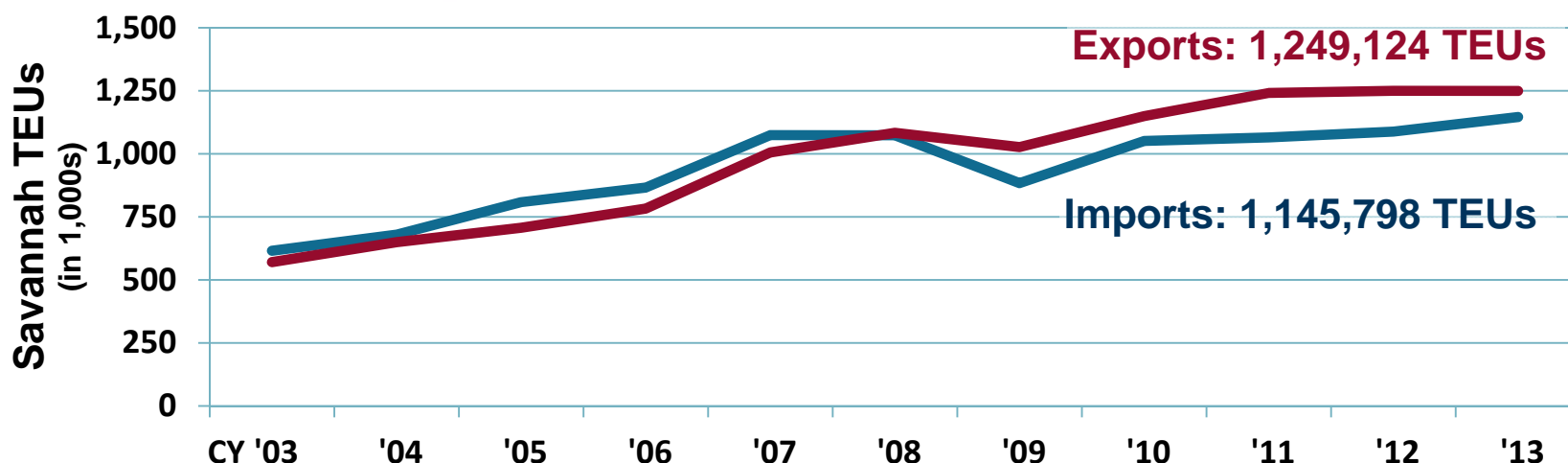
	2000	2013
1. LA	4,879,429	7,868,572
2. LB	4,600,787	6,730,573
3. NY/NJ	3,050,006	5,467,345
4. Savannah	948,669	3,034,014
5. Oakland	1,776,922	2,346,460
6. Virginia	1,347,364	2,223,534
7. Houston	1,061,525	1,950,071
8. Tacoma	1,376,379	1,886,678
9. Charleston	1,632,747	1,601,366
10. Seattle	1,488,020	1,575,389
Top 10 Total	22,161,878	34,684,002



KEY TO SAVANNAH'S SUCCESS: BALANCED TRADE



CY13 Export/Import Ratio

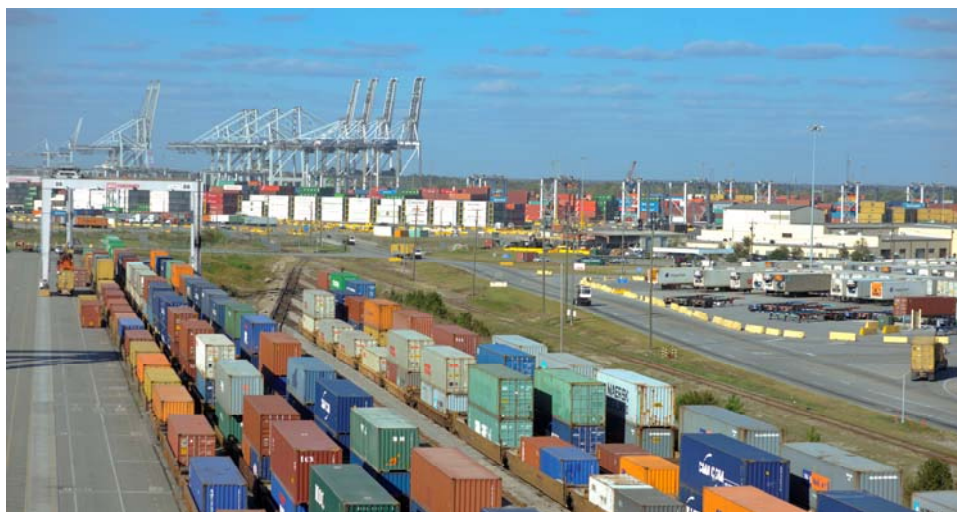


Source: *GPA Marketing (loads only), **PIERS Container Shipping Outlook, March 2014

FREIGHT MOBILITY



\$91.3 million invested and in-progress in rail infrastructure expansion to support greater inland access for our customers.



THE CHATHAM ICTF

- Served by CSX Transportation
- RTGs
- Working Tracks: (3) 2,100 ft (640 m)
Total = 6,300 ft (1,920 m)
- Storage Tracks: 11,615 ft (3,540 m)

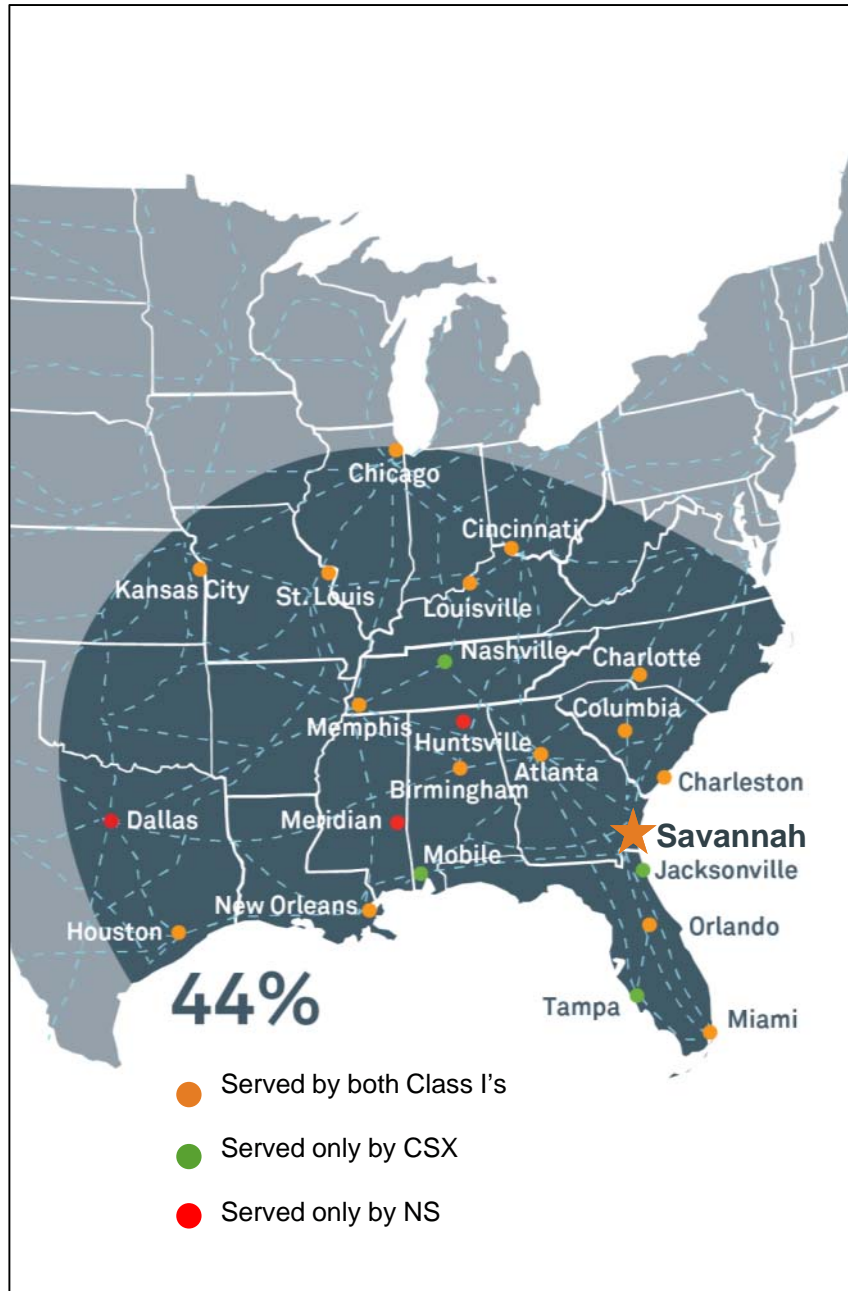


THE MASON ICTF

- Served by Norfolk Southern Railroad
- Toplifts
- Working Tracks: (5) 2,800 ft (853 m)
Total = 14,000 ft (4,267 m)
- Storage Tracks: 8,000 ft (2,438 m)

UNRIVALED ON-DOCK RAIL CONNECTIVITY

18 WEEKLY TRAINS TO KEY
MARKET - ATLANTA



- **Daily service** to every major destination east of the Mississippi
- **97%** yard-to-train within 24 hours
- **Fastest East Coast connections** to/from Alabama, Tennessee, Louisiana and Texas
- **Overnight service** to Atlanta, Charlotte, Jacksonville and Charleston

INTERSTATE ACCESS

Georgia has one of the highest over-the-road container weight allowances among all U.S. Southeast states.

**Garden City Terminal to I-16
(East/West)**
5.7 miles (9.2 km)

**Garden City Terminal to I-95
(North/South)**
5.5 miles (8.9 km)





GARDEN CITY TERMINAL BELTWAY

Will enable **direct access** from I-95 to Garden City Terminal

Will **reduce traffic** by at least 5,000 trucks per day on GA 21

Construction has begun



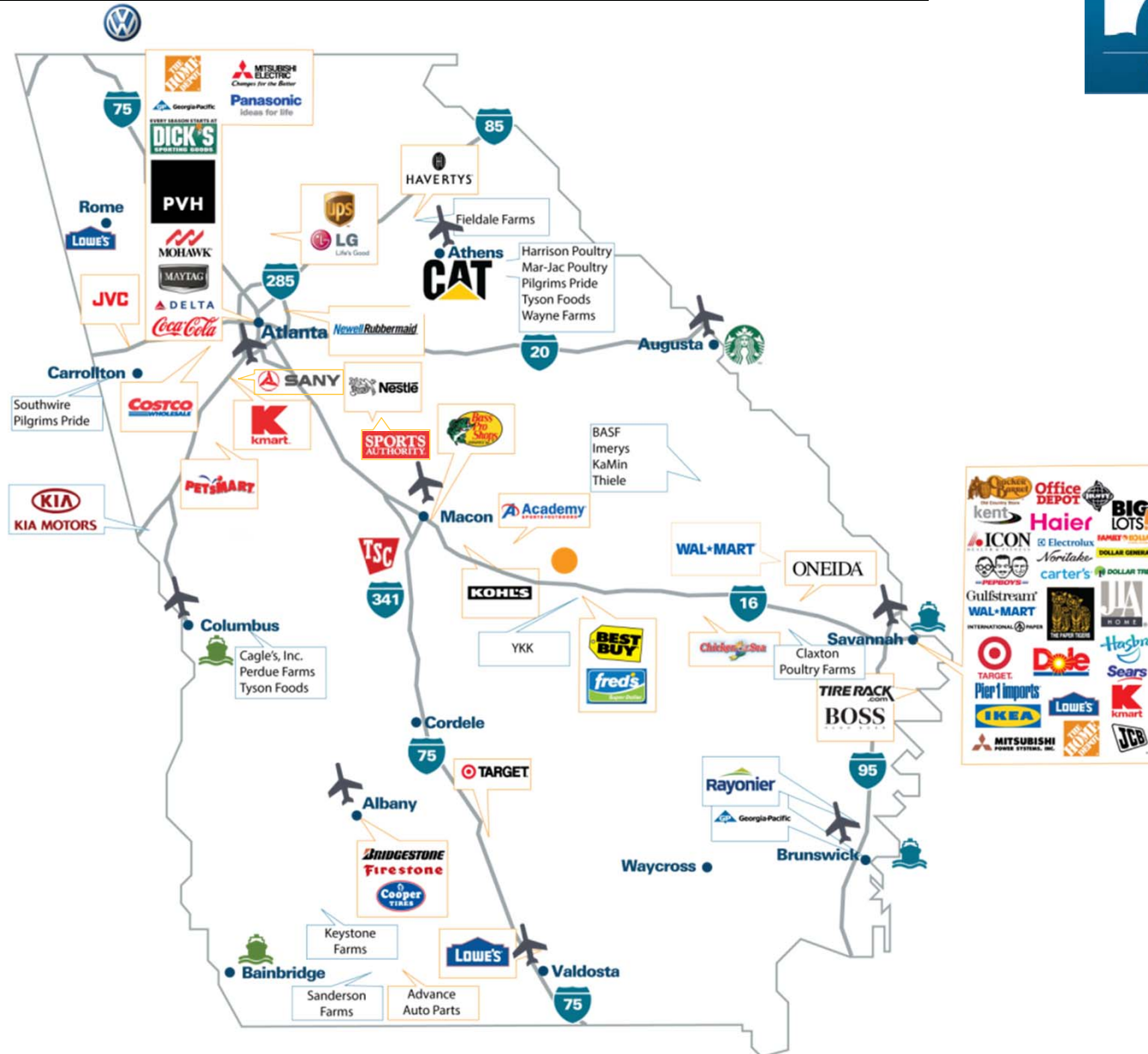


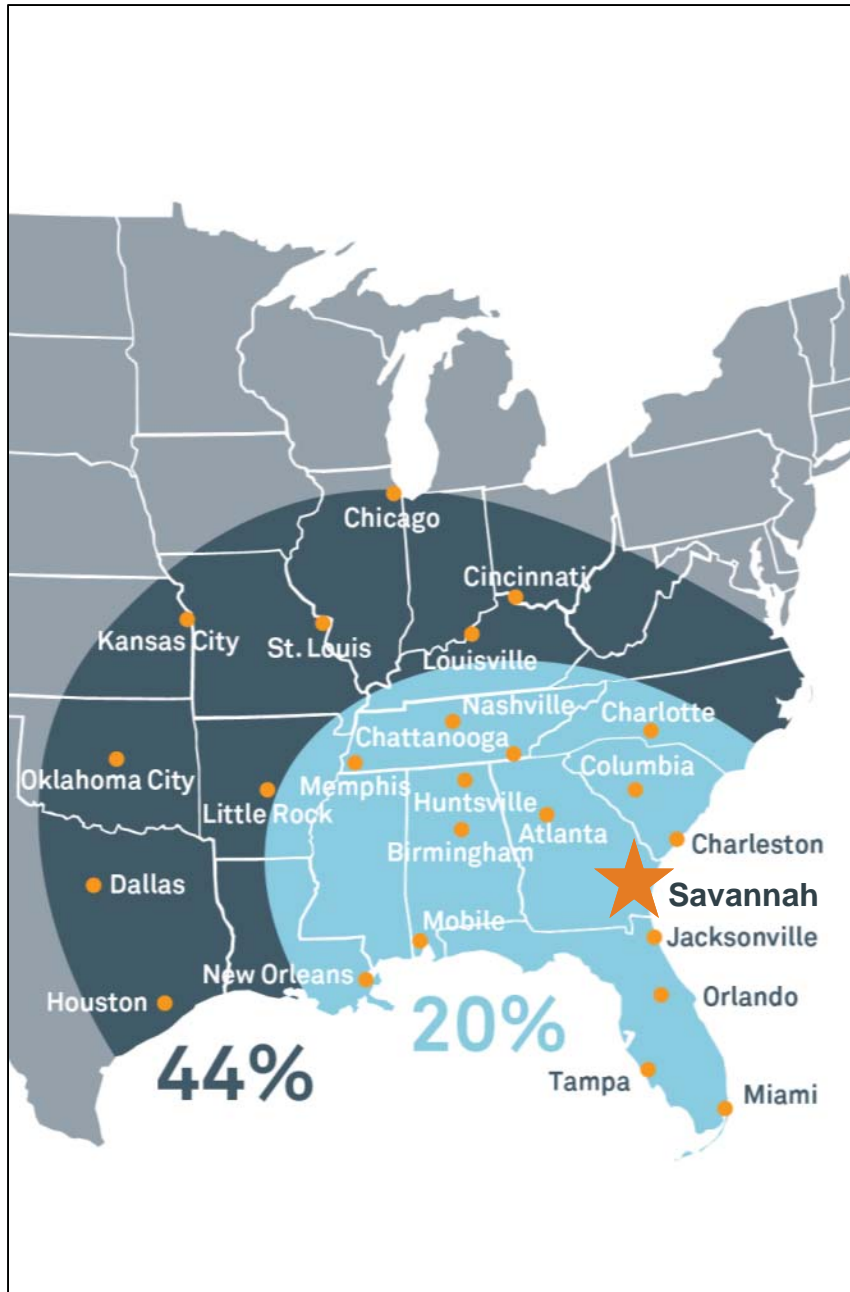
SAVANNAH NEAR PORT MAJOR CUSTOMERS

- Near Port Total Warehouse Space = 44 million ft² (4.1 million m²)
- Near Port Available Space Today = 5.6 million ft² (520 thousand m²)
- Number of DC's over 250,000 ft² (23 thousand m²) = 35

MARKET ACCESS: CUSTOMER OPPORTUNITY

Well Over 250 port-dependent distribution centers in Georgia





SAVANNAH:

GATEWAY TO AMERICAN
COMMERCE:

POPULATION = CARGO

20% of the U.S.
Population and
Industry is best
served by
Port of Savannah

44% Within easy reach of inland
connectivity infrastructure



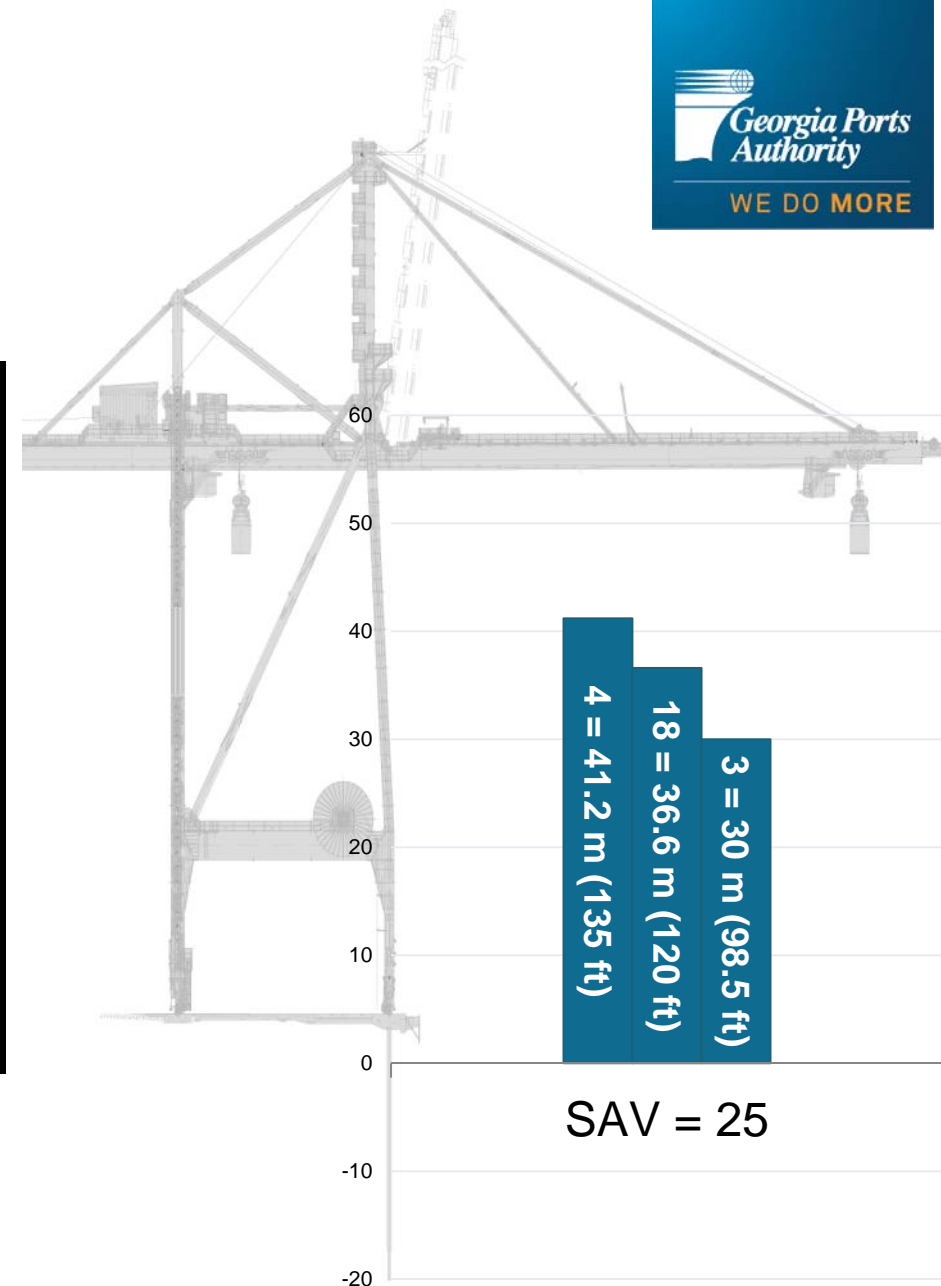
BUILDING FOR THE FUTURE

- Over the Last 10 Years
 - Operating Revenue Grew on Average **10% per Year**
 - Capital Expenditures of **\$770 Million**
- Planned Investments Over the Next Decade:
\$1.4 Billion

SHIP-TO-SHORE CRANE ADVANTAGE

SAVANNAH:

- More Cranes
- Taller Cranes

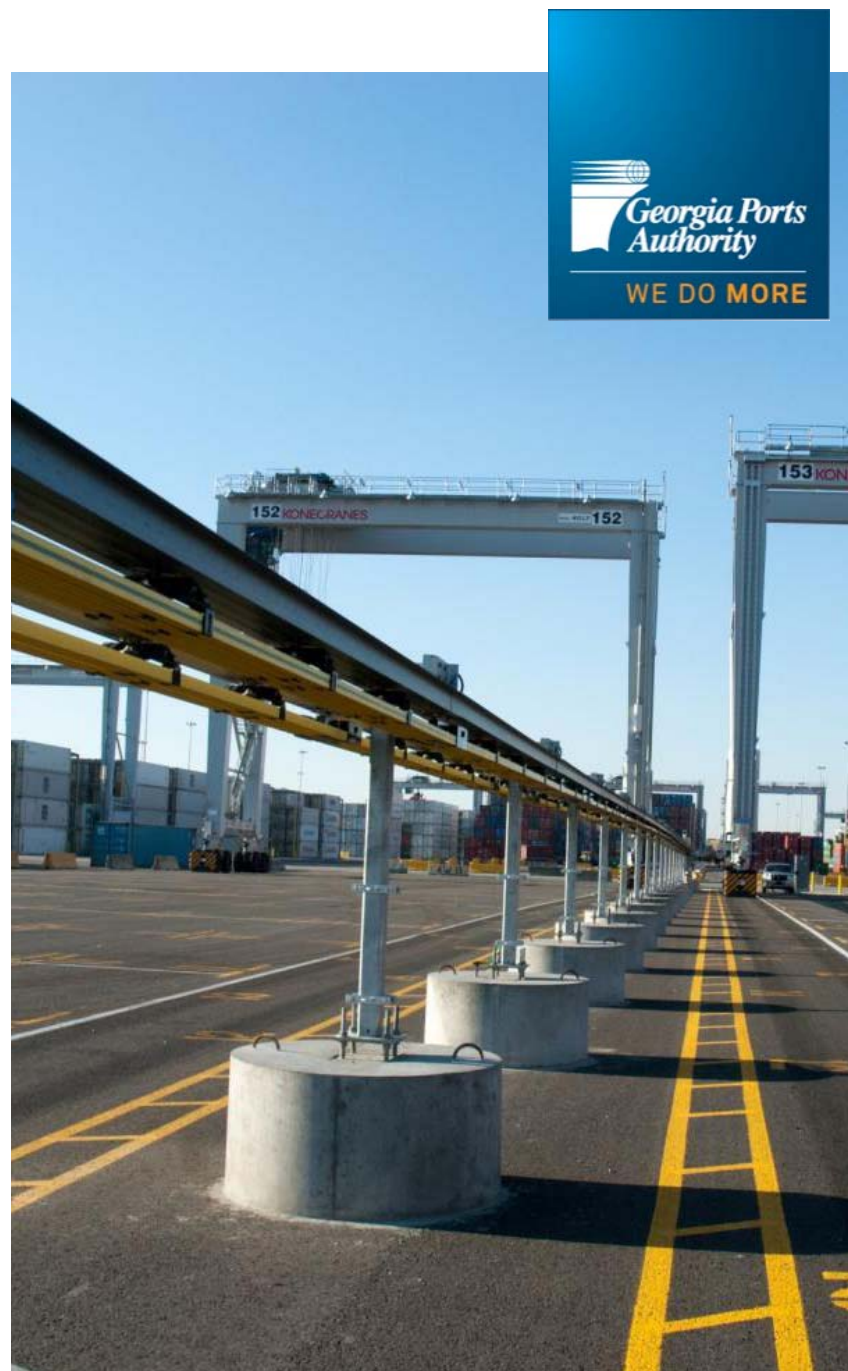


Note: Height is defined as the length from the MLW level to the spreader bar

GARDEN CITY TERMINAL: EQUIPMENT NOW & IN THE FUTURE

Equipment Type	Current	Build Out
Ship to Shore Cranes	25	33
Rubber Tired Gantries (RTG)	116	169

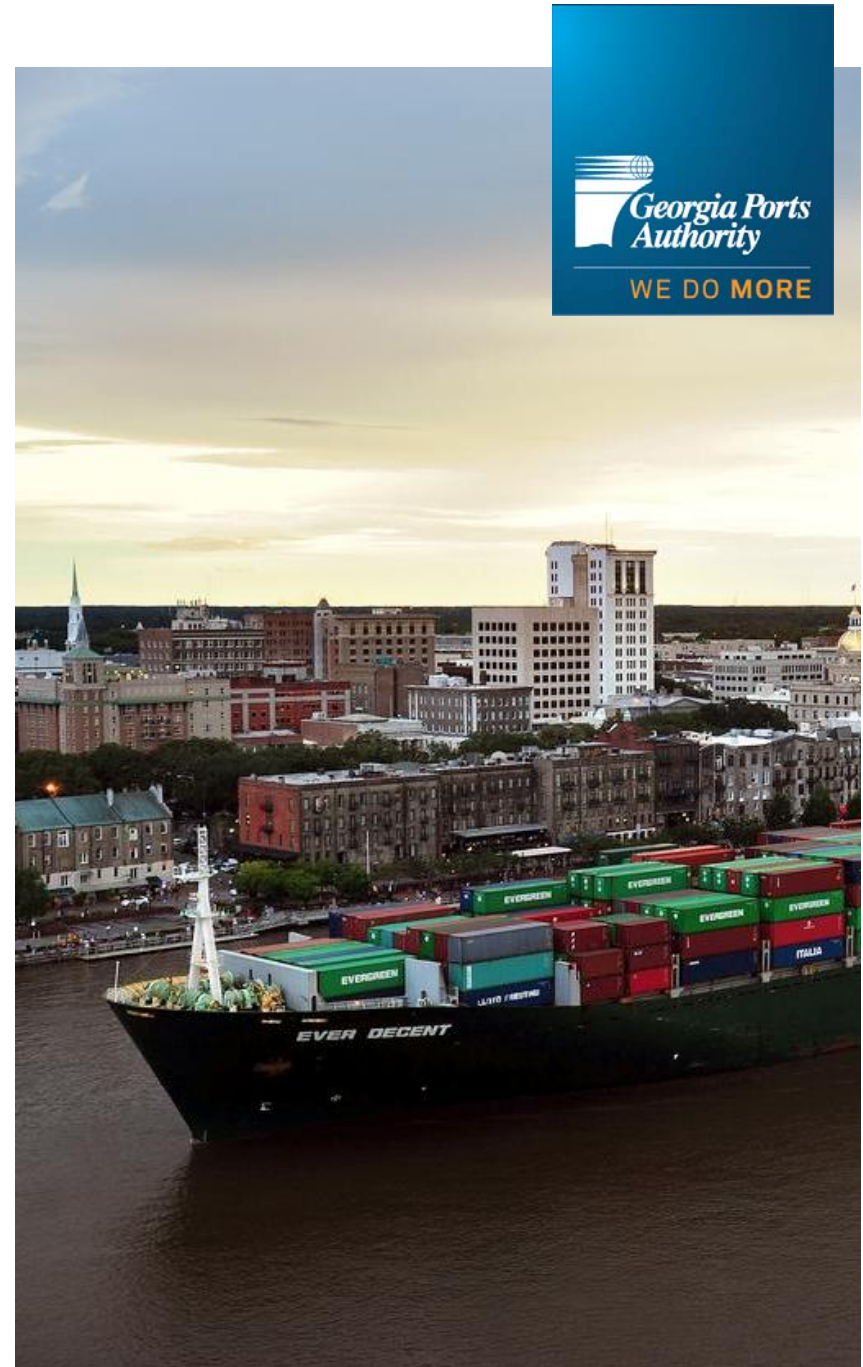
- 4 New Super Post-Panamax Cranes
- 16 New RTGs
- 4 Electric RTGs
- Increasing Speed of Ship-to-Shore Cranes
- Purchased State-of-the-Art Crane Simulator



DRAFT AVAILABILITY TODAY

SAVANNAH

- 42ft (12.8m) Channel Depth, 4ft (1.2m) Under keel general guideline
- 38ft (11.6m) Draft Available 24 Hours a day
- 7ft (2.1m) Tide, Maximum Tidal Draft Benefit +5ft (1.5m) for **4** Hours
 - **30%** of the total vessel calls are with Post-Panamax vessels
 - **148** 8,000+ TEU vessel calls annually
 - **20** outbound sailings transited the river at 42ft (12.8m) or greater between January and March 2014



SUSTAINABILITY

For more than a decade, the Georgia Ports Authority has led the way by voluntarily modernizing our container handling equipment, **which reduced our fossil fuel usage by 53% per TEU.**



New high-tech lighting provides **59% reduction in energy consumption** while also minimizing light pollution



The Port of Savannah became the first North American port to introduce emissions-saving electric rubber tired gantry (ERTG) cranes which use **95% less diesel per crane**



3.5 million gallons (13.2 million liters) annually of diesel reduction through the use of refrigerated container racks



GPA's stormwater treatment system **treats annually more than 100 million gallons** (379 million liters) of stormwater. Greatly helps protect existing and created wetlands

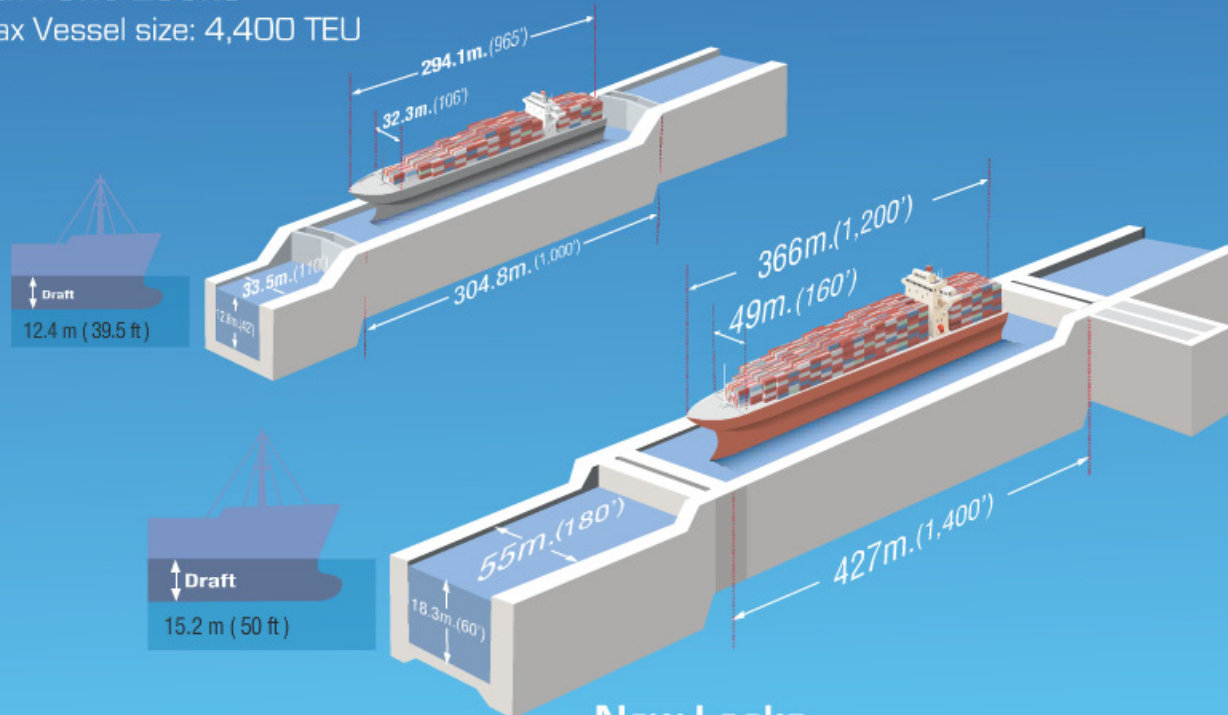
THE PANAMA CANAL:

Adding value to All-Water Services

Bigger And More Efficient Locks

Current Locks

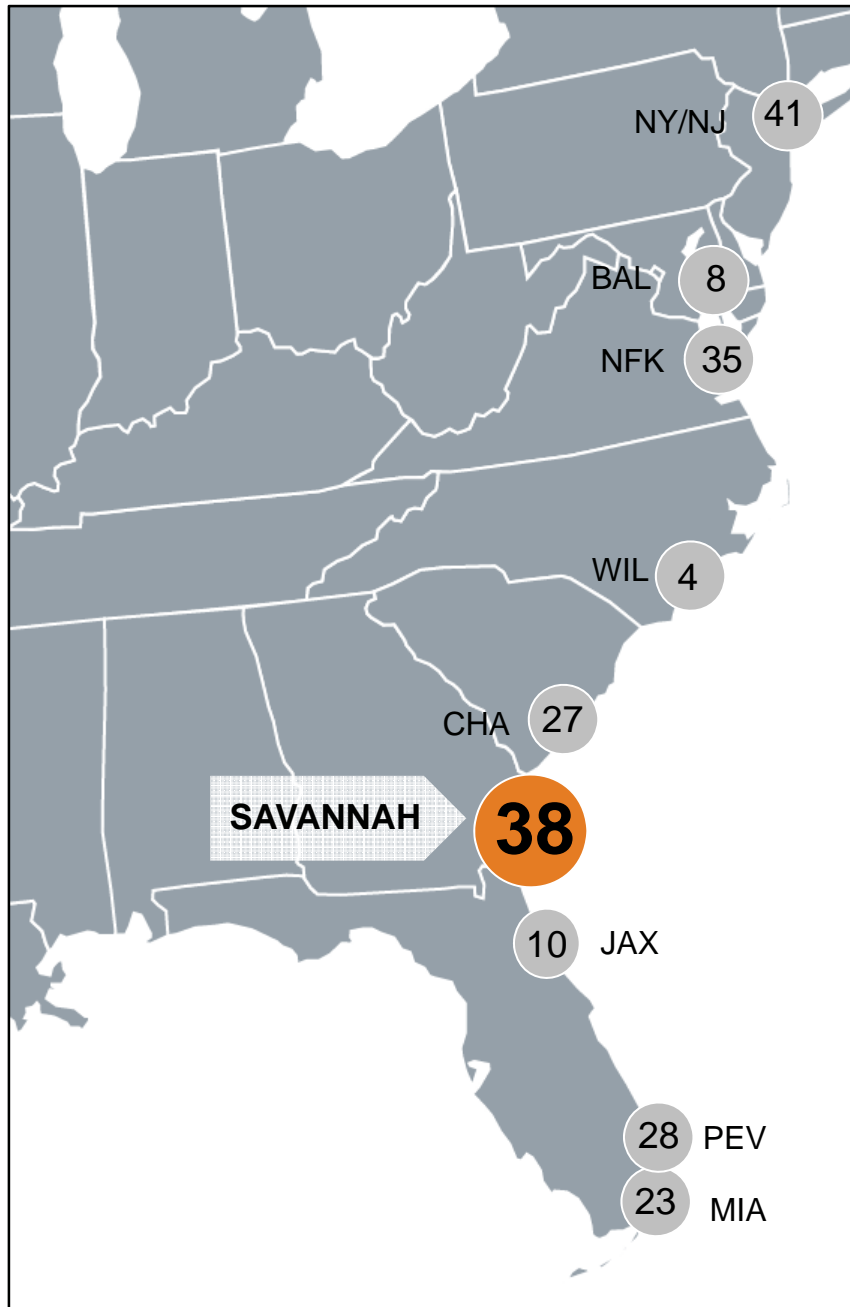
Max Vessel size: 4,400 TEU



Courtesy of Panama Canal Authority

New Locks

New Panamax Vessel size: 12,600 – 14,500 TEU



SAVANNAH:

A GLOBAL COMMERCE HUB

38 WEEKLY SERVICES COVERING THE WORLD

Key Savannah Service Features:

- Only Port with All G6 Asian Services
- Offers 9 Services via Panama
- Offers 13 Services via Suez
(The only port on the East Coast with all 13)
- First in = 10; Last out = 12 (All Trades)

Big Ships are Here Now



**Currently 1/3rd of vessels calling on
Garden City Terminal are Post-Panamax**

2011 – 22% vessels sailing tidally

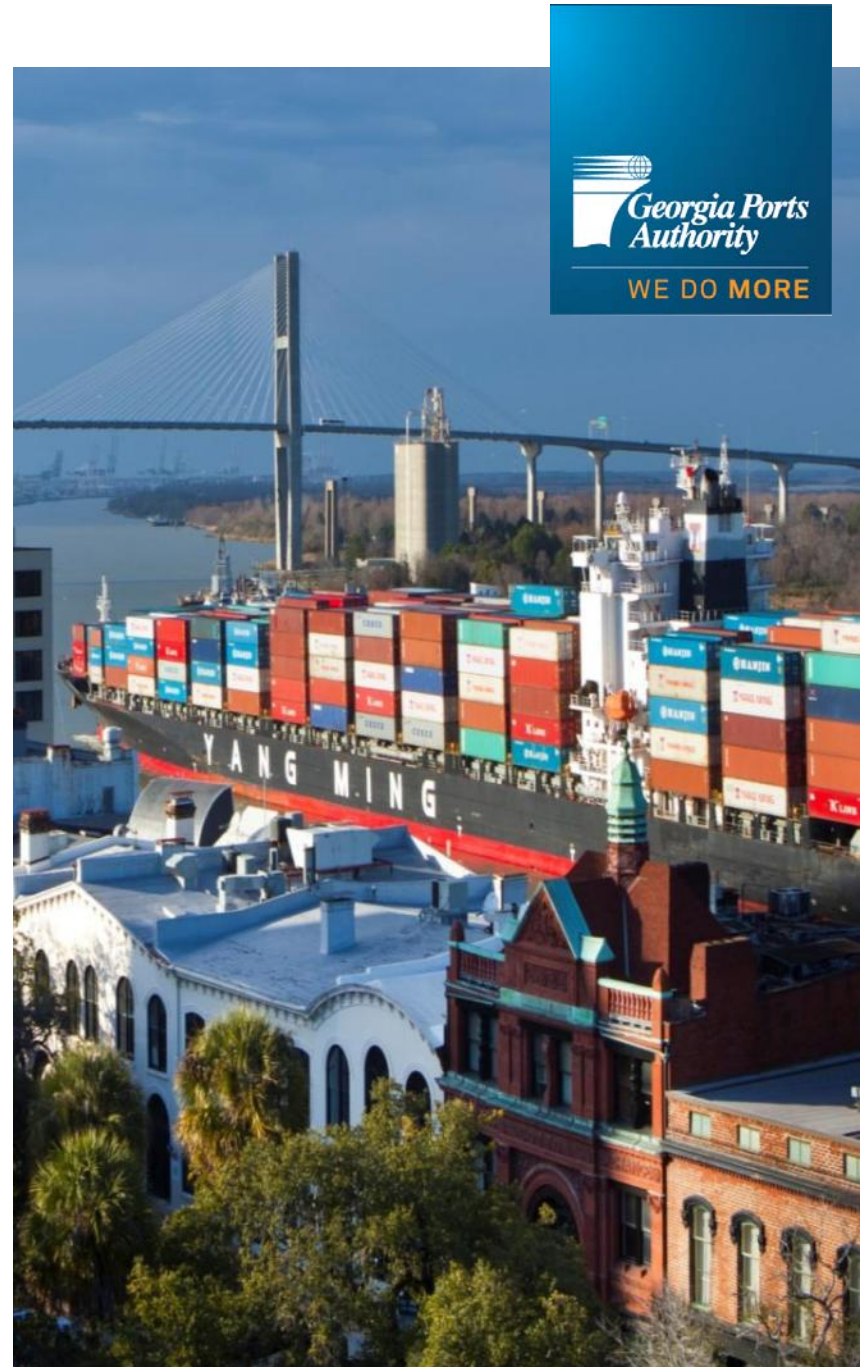
2012 – 29% vessels sailing tidally

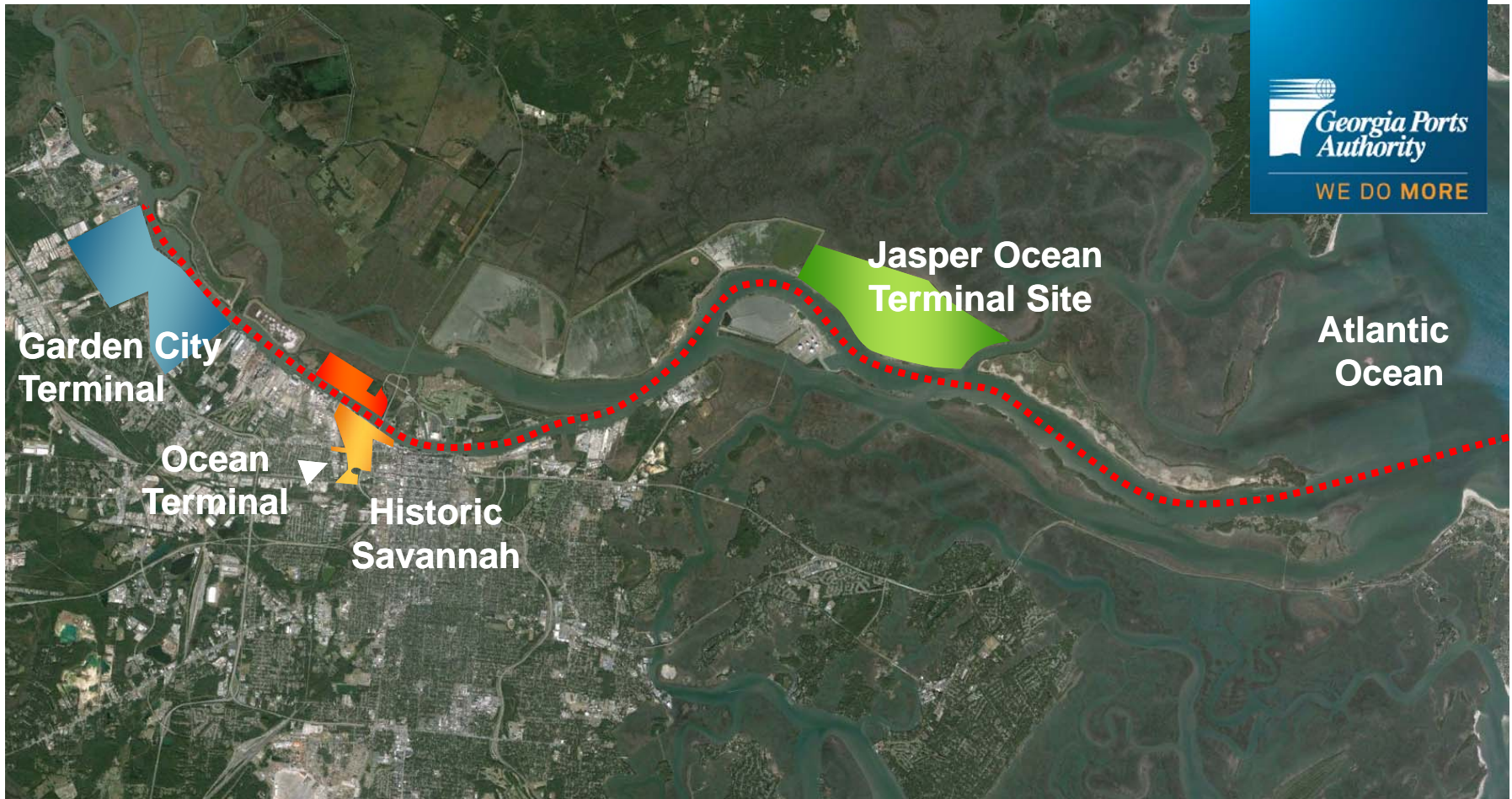
2013 – 35% vessels sailing tidally

SAVANNAH HARBOR EXPANSION PROJECT (SHEP)

MILESTONES

- **Record of Decision** issued October 2012.
- **Successful mediation** with South Carolina and environmental interests in May 2013.
- **Final Project Permits** issued in July 2013.
- State of Georgia has approved \$266 Million.
- **Water Resources Reform and Development Act (WRRDA)** signed into law by the President on June 11, 2014.
- Project Partnership Agreement signed Oct 8, 2014.
- Completion 2019





PORT OF SAVANNAH

The Room to Build & Grow with the Future.



THANK YOU
