

Savannah Harbor Expansion Project

Savannah, Georgia

**Western Dredging Association
Eastern Chapter Meeting 2012
Miami, Florida
9 - 11 October 2012**

**Presented by Jason O'Kane, PMP
SHEP Senior Project Manager
Savannah District**



**US Army Corps of Engineers
BUILDING STRONG®**



Outline

- **Savannah Harbor Expansion**
- **The Plan**
- **Schedule**
- **Dredging**
- **Questions**



Bottom Line Up Front

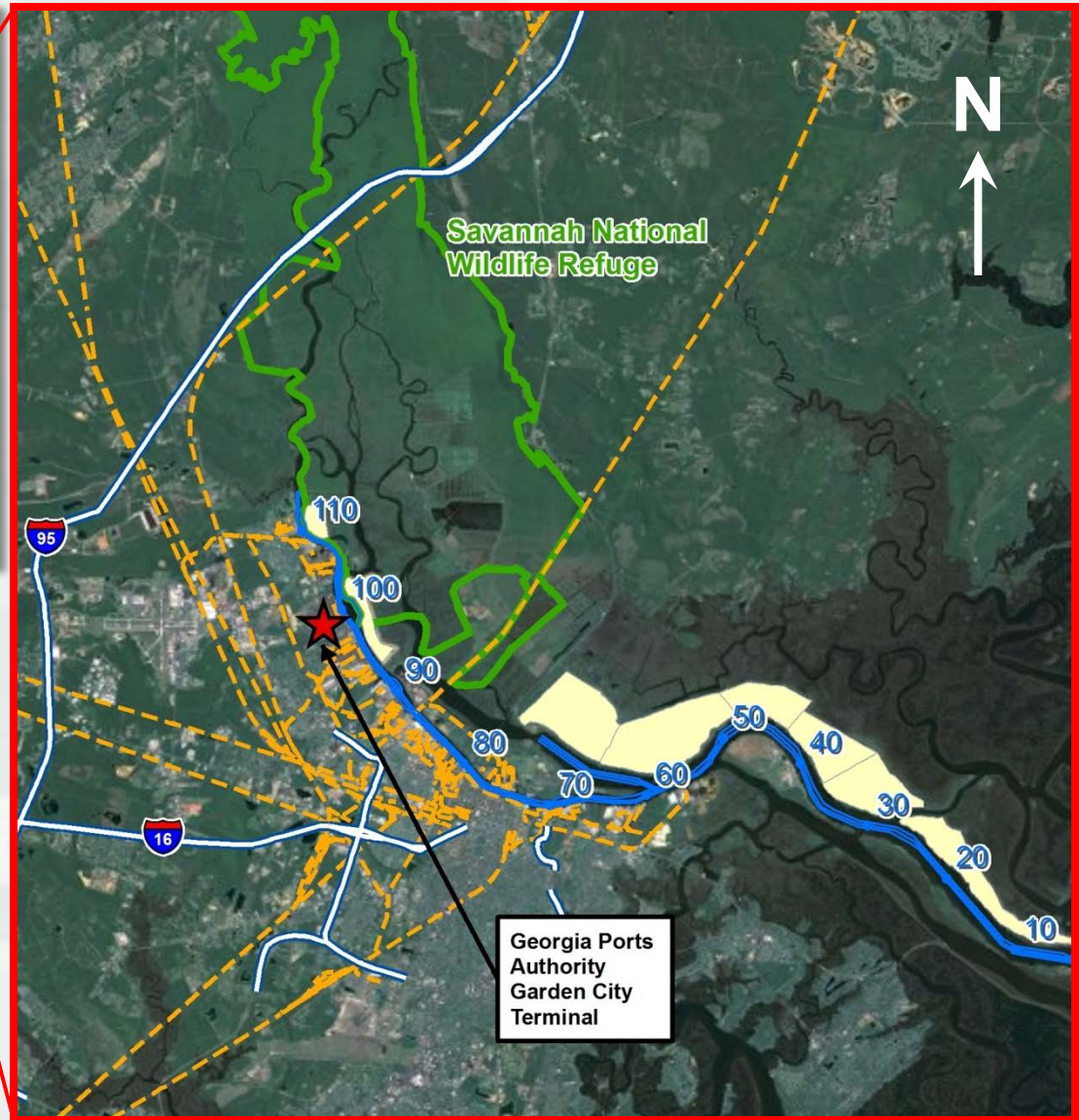
- USACE considered alternatives from 42 to 48 feet
- Selected Plan is the 47-foot (5 feet deeper) alternative
 - Yields **\$174 M** in total annual net benefits
 - Project First Cost **\$652 M** at FY 12 price levels
 - Benefit to Cost Ratio of **5.5 to 1**
 - Annual O&M costs increase from **\$22 M to \$27 M**
 - Environmental impacts can be mitigated to an acceptable level



The CMA CGM FIGARO (8500 TEUs)



Savannah Harbor Location



Existing Project

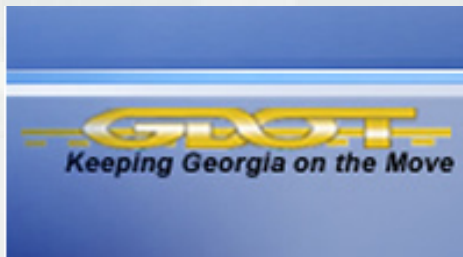
- 42-ft Navigation Channel
- 32.7 miles long
- 7 Turning Basins
- 7 Confined Disposal Facilities, 5,305 ac
- Offshore Dredged Material Disposal Site, 4.26 sq mi
- Freshwater Control System
- Depth and tide restricted



Garden City Terminal

- 4th largest container port in US
- 2nd largest container port on East Coast US
- Largest single terminal in North America
- Fastest growing container port in the Nation since 2001

Interagency and Public Participation



➤ 72 Stakeholder Evaluation Group Meetings (includes the public-GPA proponent)

➤ 3 Executive Management Group Meetings

➤ 18 Executive Steering Committee Meetings

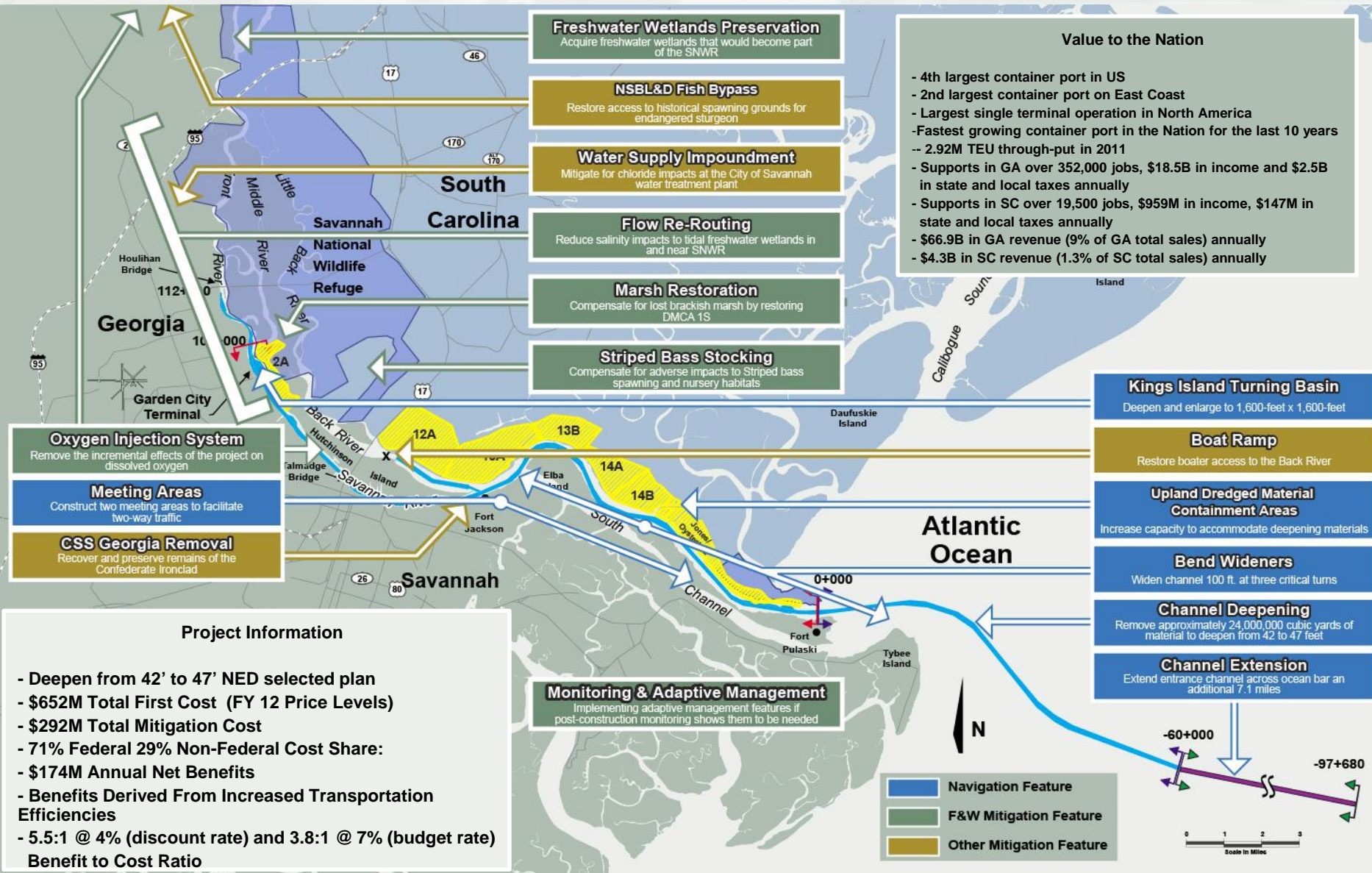
➤ Draft Public Review
26 Nov 2010 to 25 Jan 2011

➤ Public Workshop
15 Dec 2010

➤ 43 Interagency Coordination Team Meetings



47' NED Selected Plan



Schedule

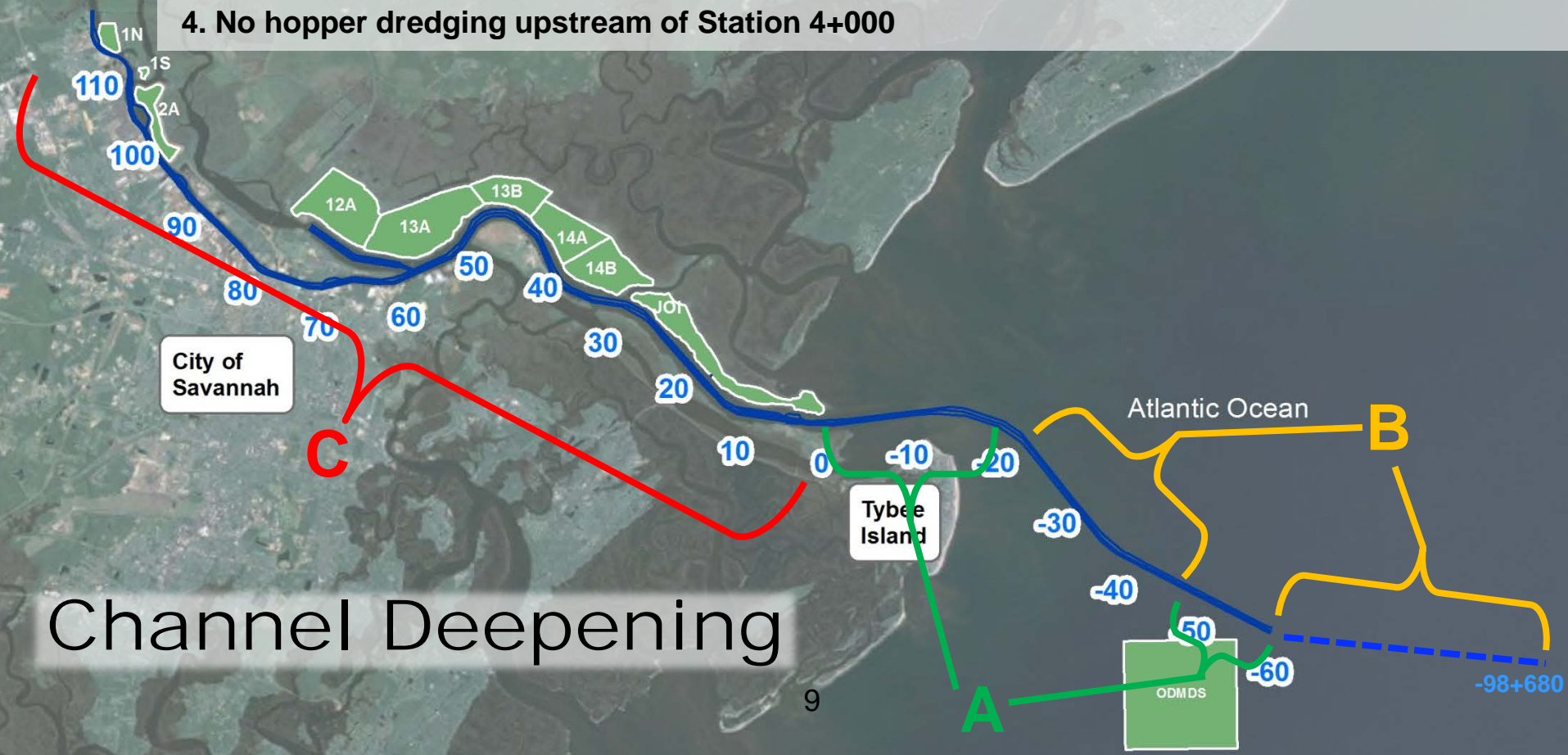
Milestone	Date
Public Review of Final GRR/EIS	20 Apr – 5 Jun 2012 (A)
Final Agency Approvals	11 Jul 2012
Corps' Chief's Report	20 Aug 2012
ASA(CW) & OMB Reviews	21 Aug - Nov 2012
Record of Decision	Nov 2012
<i>Execute PPA</i>	<i>Feb 2013*</i>

** Represents Optimistic Date*



Area	Dates	Equipment/Placement	Approx Volume
A	May (Yr 1) – May (Yr 2)	Cutter/Hopper/Mechanical to JOI DMCA	3,743,000 CY
B	Aug (Yr 1) – (Yr 3)	Cutter/Hopper/Mechanical to ODMDS	8,361,000 CY
C	Sep (Yr 2) – Dec (Yr 4)	Cutter to 12A, 13A, 14A&B, JOI DMCA's Environmental Windows	20,592,000 CY

1. Construction of McCoy Cut diversion structure must occur between May 15 and Nov 1
- *2. No hopper dredging conducted in the entrance channel between Apr 1 and 14 Dec
3. No inner harbor dredging conducted upstream of Station 63+360 between April 1 and May 15
4. No hopper dredging upstream of Station 4+000



Questions



Back-Up Slides Follow



SHEP Construction Timeline

